

ANNUAL REPORT 2004-2005

Graduate School *of* Arts and Sciences



WAKE FOREST
UNIVERSITY

GRADUATE SCHOOL *of*
ARTS AND SCIENCES



GRADUATE SCHOOL *of*
ARTS AND SCIENCES

Annual Report
2004 - 2005

TABLE OF CONTENTS

Page	
MISSION STATEMENT	3
THE 2004-2005 YEAR IN REVIEW	4
PROJECTIONS FOR THE 2005-2006 YEAR.....	21
APPENDIX.....	24
Administration, Graduate School of Arts and Sciences.....	24
Standing Committees of the Graduate School	24
Graduate Faculty Representatives.....	28
Tables.....	29
1. Graduate Programs at Wake Forest University, 2004-2005	29
2. Application Statistics, 1993-2005	30
3. Student Profile, Fall 2003-Fall 2005.....	31
Applicants, Accepted and Matriculants	
4. Student Profile, Demographics, Fall 2003-Fall 2005	32
Applicants and Matriculants	
5. US Citizen/Non-Citizen Applications.....	34
Applicants and Matriculants	
6. Standardized Scores and Grade Point Averages (GPA), Fall 2003-Fall 2005, Applicants, Accepted and Matriculants	35
7. Standardized Test Scores for Matriculated Students	36
8. Student Enrollment, Fall 1998-Fall 2005.....	38
9. Student Profile, Total Enrollment, Degree-Seeking Students, Fall 2004, Fall 2005	40
10. International Student Profile, Fall 2004, 2005.....	41
11. Degrees Awarded, 1998-1999 to 2004-2005	43
12. Time to PhD Degree, 1999-2000 to 2004-2005.....	45
13. Placement, 2004-2005.....	46
14. Financial Aid, 1998-1999 to 2004-2005	54
15. Sources of Financial Aid, 1998-1999 to 2004-2005	55
Addendum.....	57
1. Application Statistics, 2000-2005	58
2. Student Profile, Fall 2001-Fall 2005, Matriculants	60
3. Standardized Test Scores for Matriculated Students	62
4. Student Enrollment, Fall 2000-Fall 2005.....	66
5. Student Profile, Total Enrollment, Degree-Seeking Students, Fall 2002-Fall 2005.....	68
6. Degrees Awarded, 2000-2001 to 2004-2005	70

MISSION STATEMENT

“The Graduate School, operating within the framework of these principles (of Wake Forest University), seeks to provide a community of faculty and advanced students dedicated to teaching, research and productive scholarship. Through graduate programs in the arts and sciences and the basic medical sciences, an effort is made to expand the frontiers of knowledge and to keep abreast of man’s understanding of the rapidly changing human environment. As a significant feature of the educational process, students are encouraged to develop initiative, resourcefulness and responsibility required of those who become independent intellectual leaders in their chosen fields of endeavor.”

From the Statement of Purpose, Bulletin of Wake Forest University Graduate School of Arts and Sciences, 2004-2005, page 20.

THE 2004-2005 YEAR IN REVIEW

Administration

Members of the administrative staff of the Graduate School of Arts and Sciences are listed in the Appendix. During the year, Wake Forest University Health Sciences (WFUHS) recognized the service of Beth Whitsett (15 years) and Susan Pierce (10 years). Beth Whitsett also received a promotion to Administrative Assistant during the year. Irene Picconi joined the staff of the Reynolda campus office in January 2004 on a part-time basis while other staff members were heavily involved in training for the new administrative computer system (Banner) that is being implemented campus-wide. Dr. Melson completed his fourteenth year as Dean of the Graduate School. Dr. Cecilia Solano served as Associate Dean for the sixth year; she also serves as Graduate Program Director for the Liberal Studies Program and as Associate Professor of Psychology.

Dr. Melson and Dr. Solano were very ably assisted by a knowledgeable and dedicated staff in both the Reynolda campus and the Bowman Gray campus offices. These staff members are intimately involved in all aspects of the Graduate School administration and in the successful operation of major Graduate School events, such as Commencement, the Hooding and Awards Ceremony, the Graduate School Forum, Graduate Student Research Day and recruiting events both on and off campus. These staff members and their positions are listed in the Appendix under Administration. The Graduate Deans appreciate the staff members continued commitment and thank them whole heartedly for their contributions.

The administration of the Graduate School is also assisted by many faculty members who serve on advisory and academic committees, staff of other administrative offices and students, including several undergraduates who worked on a part-time basis with staff members in the Reynolda campus office. Faculty members served extensively on students' masters' and doctoral thesis and dissertation committees. The service provided by all the above individuals is essential for the success of the graduate programs in arts and sciences and biomedical sciences at Wake Forest University. These individuals are appreciated and thanked for their continued dedication and service. Also, the senior leadership of the University continued to support the Graduate School both financially and through their encouragement.

Active graduate programs in the Graduate School of Arts and Sciences for 2004-05 are listed in the Appendix, Table 1. One change that was made from previous years involved the combination of the separate PhD programs in Physiology and Pharmacology into one PhD program in Physiology and Pharmacology.

Graduate School and University Committees

The **Graduate Council** met monthly during the academic year, except for December, for a total of seven meetings. The meetings again alternated between the Reynolda and Bowman Gray campuses. Dr. Greg Kucera (Hematology and Oncology) was elected secretary to the Council and Faculty for 2004-05. The Credentials, Curriculum and Policy Committee of the Council (memberships listed in the Appendix) reviewed nominations to

the graduate faculty, courses changes, additions and deletions and policy issues respectively. The Credentials Committee also served as the Nominations Committee, proposing faculty candidates for election to the Council and for Graduate School representation on the University Senate for 2005-2006. Elections were held in April 2005. The Policy Committee, led this year by Dr. Brian Tague (Biology) following two years of leadership from Dr. Martha Alexander-Miller (Microbiology and Immunology), continued to discuss the development of an Honor Code for the Graduate School. The proposed document was reviewed by Ms. Dina Marty of the Legal Department who provided the Committee with some excellent comments for consideration. The revised document was again presented to the Graduate Faculty at its spring 2005 meeting for comment. The Council also discussed plans for the Hooding and Awards ceremony, the Graduate School Forum and the Graduate Student Research Day and selected awardees for the Outstanding Doctoral and Outstanding Master's student awards.

Changes to the Clinical Epidemiology and Health Services Program (CEHS), and programs in Computer Science, Communication and Pastoral Care were reviewed, approved by the Council after considerable discussions and submitted for final approval to the Graduate Faculty. A new Structural and Computational Biophysics Track was presented to and approved by the Graduate Council. This interdisciplinary track may be followed by students in graduate programs in Biochemistry, Chemistry, Computer Science and Physics.

Dr. Michael Tytell (Neurobiology and Anatomy and Chair of the Internship Committee) presented the proposed Graduate Student Internship Program to the Council, who enthusiastically endorsed the program and forwarded it to the Graduate Faculty for approval.

The **Graduate Faculty** held its fall meeting on November 24, 2004 and its spring meeting on April 25, 2005; both meetings were held in Winston Hall on the Reynolda campus. Reports on the activities of the Graduate Council were given by the Secretary, Dr. Kucera. Reports on activities of the University Senate were given by Dr. Dagenbach (Psychology). Course changes approved by the Council were approved by the faculty and several new members of the Graduate Faculty were announced at each meeting. At the fall meeting, Dr. Melson reported on "The Status of the Graduate School." This report provided statistics on student recruitment, graduation and financial aid. The impact of financial constraints at the University level on the Graduate School and its graduate programs were discussed. The PowerPoint presentation is archived on the Graduate School web site: www.wfu.edu/graduate. Two initiatives for 2004-05 were announced viz., the Task Force on Recruiting, chaired by Associate Dean Solano and the review of the Biomedical Sciences Graduate Program, chaired by Dr. Larry Daniel (Biochemistry).

The Graduate Student Internship Program was presented by Dr. Tytell at the fall meeting. At the spring meeting, Associate Dean Solano presented a preliminary report on the findings and recommendations of the Task Force on Recruiting. Also at the spring meeting, Dr Tague presented the Council discussions of the proposed Honor Code for information and comment. It is hoped that the Honor Code will be completed early in the 2005-06 year and presented to the Council and Faculty for approval.

Changes for the CEHS, Computer Science and Communication programs that had been forwarded from the Council were approved by the faculty. The addition of the track in Structural and Computational Biophysics was approved. Also, the suspension of applications to the MA program in Pastoral Care was approved.

The results of the elections for Graduate Council, and Graduate School representative to the University senate were announced at the spring meeting. Dr. Allyson Bennett (Physiology and Pharmacology), Dr. Christa Colyer (Chemistry) and Dr. David John (Computer Science) were elected to three-year terms (2005-08); Dr. Kucera was re-elected to a second three-year term. Dr. Kathy Kron (Biology) was elected to represent the Graduate School on the University Senate for 2005-09.

There were 507 members of the Graduate Faculty at the beginning of the 2004-05 year. This number compares with 490 faculty members at the start of the 2003-04 year.

The **Biomedical Sciences Graduate Committee** met twice during the year, in June and December, 2004. At the June meeting discussion focused on recruitment, viz., Career Day (October 1, 2004) and the PhD interview weekend (February 24 and 25, 2005). Procedures to allow a student to apply to more than one program were approved. The redesigned Ethics and Professional Development courses were presented and discussed by Drs. Dwayne Godwin and Michael Tytell (both Neurobiology and Anatomy). The courses cover both semesters of the academic year, with the second semester focused on career options. Faculty, senior graduate students and postdoctoral fellows were involved in the Ethics section of the program, with Dr. Nancy Jones (Pathology) taking the lead role. A small grant to support the ethics program was obtained from the Survival Skills and Ethics Program, an NIH program administered through the University of Pittsburgh. The funds were used to bring expert speakers to WFU for interactions with graduate students and postdoctoral fellows. At the December meeting, Dr. Larry Daniel (Biochemistry) presented plans for the review of the Biomedical Sciences Graduate Program and Dr. Solano discussed the activities of the Task Force on Recruiting.

The **Graduate Program Directors Committee** (Reynolda campus) met in March 2005 to discuss the implementation of on-line course registration through the new Banner system. Registration for fall 2005, conducted in April 2005, proceeded smoothly without any major problems occurring. Course registration will be conducted through Banner for each semester in the future.

The **Task Force on Bioethics** continued to meet on a regular basis during the year. The Task Force was strengthened by the addition of two clinical faculty members, Dr. Tom DuBose (Internal Medicine) and Dr. James Toole (Neurology). The complete composition of the Task Force is provided in the Appendix. Dean Melson and Dr. Sally Shumaker (PHS and Associate Dean for Research) continued as co-chairs of the Task Force and made a presentation entitled "Bioethics at Wake Forest University School of Medicine" to the Faculty Executive Committee (FEC) on September 22, 2004. The presentation summarized the activities of the Task Force since its initiation in 2001 and projected activities for the coming year(s) including the establishment of a Center for Bioethics and a master's degree program in bioethics.

The Task Force sponsored, with funding from the Fund for Ethics and Leadership, the Graduate School and the Office of Intercampus and Community Development, the “Visiting Scholars Program” in 2004-05. As part of this program, Dr. James J. Walter, Austin and Ann O’Malley Chair in Bioethics and Director, the Bioethics Institute at Loyola Marymount University in Los Angeles spent November 1 through 4, 2004 “in-residence” at WFU. He made a public presentation entitled “The Human Genome Project: What can Theological Reflection Contribute to the Ethics of Genetic Medicine?” and spoke to the General Clinical Research Center (GCRC) Seminar Luncheon Series on the topic of “Pluripotent Stem Cell Research: Should Ethical Considerations Determine the Agenda for Medical Research?” Dr. Walter also spoke to graduate students on “The Ethics of Stem Cell Research and the Scientist’s Role in Shaping Public Policy.” Dr. Walter engaged in many conversations with faculty and students in both group and individual meetings. The Visiting Scholar for spring 2005 (March 27-April 1) was Dr. Haavi Morreim, Professor, Department of Human Values and Ethics in the School of Medicine at the University of Tennessee. Her public presentation was entitled “Health Savings Accounts: The Next (R)evolution in Health Care Financing”. Her GCRC presentation was “Litigation in Clinical Research: Malpractice Doctrines versus Research Realities” and her presentation to graduate and medical students was “High-Profile Research and the Media: Drawing the Line between Publicity and Public Information.” Dr. Morreim also met with several groups of faculty and staff. Drs. Walter and Morreim met with potential donors for the proposed Center for Bioethics at breakfast meetings hosted by the WFUHS Office of Development. The presence of these two distinguished bioethics at Wake Forest continued to raise the awareness of bioethics at the University, which is a major goal of the Task Force, and assist in the development of plans for the Center and master’s degree program.

The Task Force also co-sponsored a presentation by Dr. William F. May (Southern Methodist University and the University of Virginia) at the GCRC: “Cloning and Stem Cell Research: My Take on the President’s Council.” Dr. May also gave a public lecture entitled “The Public Obligation of the Professional” in Wait Chapel on the Reynolda campus. Both of these events occurred in March 2005.

A proposal by the Task Force to the WFU Fund for Ethics and Leadership entitled “Graduate Level Courses in Bioethics” was approved by the administrators of the Fund at the requested level of \$10,000 for 2005-06. With support from the Fund, it is planned to offer two graduate courses in bioethics through the Master of Arts in Liberal Studies program, one in the fall of 2005, the other in spring 2006. The courses will be interdisciplinary in content, with WFU faculty and bioethics faculty from other institutions in North Carolina forming the teaching faculty for the courses. Following approval of the funding, the Task Force spent many hours discussing the structure and content of the fall 2005 course, which will be entitled “Changing World, Challenging Decisions: The History of Contemporary Bioethics.”

The **WFU Graduate Internship Committee** continued to meet on a regular basis under the chairmanship of Dr. Michael Tytell (Neurobiology and Anatomy). Procedures for student participation in the internship program were developed and possible internship locations discussed. Dr. Tytell made presentations to the Graduate Council and Graduate Faculty. Liang Chen, a student in the graduate program in the Department of Computer Science, participated in the program during summer 2005 through a placement at

AQABUS Inc., a software engineering company located in Providence, RI. The procedures developed by the committee for placement and evaluation of the intern's performance were successfully implemented. More opportunities for internships will be the subject of continuing discussions by the committee.

A Graduate School-wide **Task Force on Recruiting** was chaired by Associate Dean Solano during the year to study the recruiting practices of the Graduate School. Faculty and students from both campuses (see Appendix) participated in the discussions. The charge to the Task Force was to seek answers to the questions: Do we have an effective marketing plan? Are we spending our resources in an effective manner? How can we increase the quality of students applying to and matriculating into our programs? How can we recruit more effectively on the national and international level? How can we use faculty, students and alumni? What can we learn from each other about best practices in recruiting? Dr. Solano made a presentation on a draft version of the report to the Graduate Faculty at its spring 2005 meeting. Preliminary recommendations include making the web sites of the Graduate School, departments and programs more student-oriented, informative, up-to-date, attractive and easy to navigate. The on-line application process needs to be redesigned and more use of personal contacts, including faculty, students and alumni should be made. The final report, with recommendations, was to be delivered at the end of summer 2005. The committee recommendations will be considered during the 2005-06 year.

The **Board of Visitors of the College and Graduate School of Arts and Sciences** (BOV) held fall (September 16-17, 2004) and spring (February 24-25, 2005) meetings on the Reynolda campus. The members of the Graduate School Advisory Committee (GSAC) are listed in the Appendix. The topic for the fall meeting was "The Future of Research at Wake Forest University – Part II, The Impact on the Community" continuing the discussions from the spring 2004 meeting. Dean Melson reported on the BOV recommendations from the spring meeting and moderated a panel discussion on "Internships and Their Impact on the Community." The panel included Patrick Sullivan Jr., Assistant Director, Experiential Learning, Dr. Michael Tytell and Dr. Randall Jacinto ('04 PhD/MBA, Molecular Medicine). The GSAC discussed several questions that were related to the topic of the meeting. These discussions were communicated to the BOV membership at the end of the meeting.

The spring meeting topic was "Emerging Academic Initiatives at Wake Forest University." Dean Melson provided an update on the Graduate Student Internship Program and moderated a panel discussion "Overview of Technology Transfer." This session included Drs. Michael Batalia, Director of Technology Asset Management at WFU and Bradford Walters from Academy Funds, a venture capital organization. The GSAC had a lively session discussing the question "How can Wake Forest manage limited resources for core programs and still claim the opportunities in technology transfer and entrepreneurship?" A summary of the discussions was presented to the full BOV.

Departmental and Program Reviews

Review of the **Department of Mathematics** took place during the year. The department had excellent and constructive reports from both the external reviewers (Dr. Erica Flapan,

Pomona College and Dr. Alex Hahn, Notre Dame University) and the internal committee. It was concluded in the Memorandum of Understanding (MOU) that was signed by Provost William Gordon, Dean of the College Debbie Best, Dean Melson and Department Chair Stephen Robinson, that graduate student stipends were currently low and not competitive with institutions with which we compete for students (many of them PhD-granting departments) and that an increase should be sought at the earliest opportunity. Such an increase will only be possible when additional funds are appropriated to the Graduate School for stipend increases, since stipends are currently non-competitive in many programs.

Evaluation of the **Biomedical Sciences Graduate Program** took place this year. Review of the BMS programs occurs on a seven-year cycle, with the last review having been conducted in 1997-98. The members of the review committee are listed in the Appendix, Dr. Larry Daniel (Biochemistry) chaired the committee. The committee was asked to consider the following questions: Is the Program achieving its goals? Has the Program addressed the recommendations of the previous review? What changes, if any, should be made to improve the Program? and What should be the future direction of the Program? Preliminary recommendations for the committee suggest that the organization of the BMS graduate programs should be changed and that a more unified program should be considered. Dr. Sharon Milgram (UNC-Chapel Hill) and Dr. James Patton (Vanderbilt) served as the external reviewers; they recommended that all recruiting should be reorganized into a single combined mechanism with students moving into one of the existing programs after the first year. The final report should be submitted by the end of the summer 2005. Recommendations from the committee will be considered during the 2005-06 year.

It should also be mentioned that accumulation of the documentation for the **Southern Association of Colleges and Schools (SACS)** accreditation for WFU took place this year. Dr. Solano coordinated the collection of data on faculty credentials and 300/600 level courses and prepared the text for the report from the Graduate School. She also worked with associate deans from other schools and especially with the Director of Institutional Research (Ross Griffith). The report was submitted at the end of the summer.

Graduate School and Graduate Program Events

The sixth annual **Hooding and Awards Ceremony for the Graduate School of Arts and Sciences** for the class of 2004-2005 was held on Saturday, May 14, 2005 in Wait Chapel on the Reynolda campus. This was the second year that the ceremony was held in Wait Chapel. The faculty marshals, who were selected from the Graduate Council membership were Drs. Pat Nixon (Health and Exercise Science) and Brian Tague (Biology). Student marshals, selected by the Graduate Student Association, were: Blythe Ashcraft (Chemistry), Subhasis De (Chemistry), Joy Little (Cancer Biology), Anne Misior (Molecular Medicine), Jaime Misler (Neuroscience), Alixana Norris (Cancer Biology) and Amy Sloat (Chemistry). Dr. Fred Horton (Religion) gave the invocation and the benediction and Ms. Faye Reece provided the processional and recessional organ music. The distinguished invited speaker was Dr. Mitchell E. Robinson ('83 Ph.D., Biochemistry), Associate Dean for Graduate Studies and Professor of Biochemistry and Molecular Biology, James H. Quillen College of Medicine at East Tennessee State

University. His presentation “Seeking Connections” was well received by the audience of graduates, family, friends and faculty of more than 1000 persons. As in previous ceremonies, Ph.D. recipients were hooded by their advisors. Dr. Jack Wilkerson, Dean of the Wayne Calloway School of Business and Accountancy hooded the Master of Science in Accountancy graduates, with Dr. Terry Baker, Graduate Program Director for the Accountancy Program presenting the graduates. Associate Dean Solano presented all other master’s degree recipients, with Dr. Edward Allen (Mathematics) hooding the Master of Arts graduates, Dr. Jacqueline Fetrow (Physics and Computer Science) the Master of Science graduates, Dr. Leah McCoy (Education) the Master of Arts in Education graduates and master teacher candidates and Dr. Donald Frey (Economics) the Master of Arts in Liberal Studies graduates.

The Outstanding Doctoral Student Award was presented to Dr. Xiaoying Zhu (Neuroscience), advisor Dr. James Eisenach. The Outstanding Master’s Student Award was presented to Robert M. Davis (Mathematics), advisor Dr. Hugh Howards. This year, for the first time, the doctoral and master’s awards monetary prizes were made possible through gifts from alumni and friends to the Annual Funds of the Graduate School of Arts and Sciences. The Graduate Student Association Faculty Excellence Award was presented to Dr. Deborah Newsome (Counseling). Graduating students from the 2004-05 year who received major awards during their tenure at WFU were also recognized. A reception following the ceremony was held in the Green Room of Reynolda Hall. Again the ceremony was a great success and enjoyed by those in attendance. A dinner recognizing the distinguished speaker and award recipients with their families and friends was held in the evening at a local restaurant.

At the **WFU Commencement Ceremony** on May 16, 2005, two hundred and thirty-four graduates of the 2004-05 year were recognized or awarded their degrees (the highest number in one year). This number included forty-eight students who received their Ph.D. degrees, the largest number awarded by Wake Forest in one year. One hundred and eighty-six master’s degrees were awarded, also a record number.

The eighth annual **Graduate School Forum** “Performing Well in Graduate School and Beyond” was held on January 28, 2005 from 11:30 am to 1:30 pm. on the Reynolda campus. The Forum had its highest number of attendees, 137 graduate students from 24 graduate programs in areas as diverse as biomedical engineering, religion, cancer biology, communication, chemistry, psychology and English. Fourteen topics were discussed, with twenty facilitators taking part. Graduate students selected topics with each student being assigned to two sessions based on their choices. The topics were: Enhancing the Mentor Relationship; Establishing and Evaluating Goals; Getting a Postdoctoral Position; Internships for Graduate Students in Technology Related Businesses and Non-Profit Organizations; Managing your Money; Presenting Yourself Professionally; Time Management: Getting Everything Done; What we know about Successful Negotiation; Widening Your Professional Network; Working in Biotechnology; Working in Business; Working in Counseling; Working in Government and Working at a Small Liberal Arts University. Facilitators were recruited from the University and a wide variety of fields in the community, such as city and state government, banking, biotechnology, higher education and business. Thanks go to all the facilitators, GSA members, Dr. Solano, and the Graduate School staff for ensuring the successful outcome of the Forum.

The fifth annual **Graduate Student Research Day** was held on March 18, 2005. Eighteen graduate programs were represented by fifty-four students. Students shared information from areas as varied as new firewall technology, theories on the Fibonacci sequence, effects of ethnicity and gender in education, research on aging muscle tissue, cultural differences in emotions and progress in vascular tissue engineering. Each year, Research Day provides an opportunity for graduate students to display abstracts of research they have conducted while at Wake Forest and to interact with fellow students and faculty members. Three undergraduates from the Louis Stokes Alliance for Minority Participation (LS-LAMP) and the Program Administrator, Ms. Brenda McNeely, also spent time interacting with graduate students and faculty. The undergraduates were hosted by the Graduate School in recognition of their award-winning presentations at the LS-LAMP research day in November 2004. Dr. Solano and the staff of the Graduate School once again very effectively organized the event.

The tenth annual **Department of Education Research Forum** was held on December 8, 2004. Graduate students in the programs of the department presented their research through posters, short presentations and focused discussions at the afternoon event.

The fourth annual **Virginia Tech-Wake Forest School of Biomedical Engineering and Sciences Research Symposium** was held on May 12, 2005 at Chateau Morrisette, in Meadows of Dan, Virginia. Twenty-one oral and eighteen poster presentations were given by students from both Wake Forest and Virginia Tech. More than eighty people attended the event.

The eleventh annual **Summer Research Opportunities Program (SROP)**, sponsored and funded by the Graduate School, was held on the Bowman Gray campus in conjunction with the NIH-supported **Excellence in Cardiovascular Sciences (EICS)** summer research program from June 2 through July 29, 2005. As in previous years, students from both programs were housed together in University owned houses on the Reynolda campus. A total of twenty-nine undergraduates from twenty-five different schools participated in the programs. These programs are becoming well recognized nationally, with the applicant to participant ratio now ~ 8:1. Thanks are expressed to Dr. Debra Diz (Hypertension and Vascular Disease Center) for serving as Director of the EICS program and to Drs. Fred Perrino (Biochemistry) and Ann Tallant (Hypertension) who ran the journal clubs for the SROP and EICS programs respectively. The 2005 Research Poster Symposium showcased the research participants and the projects that they had completed during the summer. The symposium was followed by a lunch and the presentation of certificates of completion to the participants. Both the symposium and lunch were well attended by faculty advisors and family and friends of the participants. The summer research programs provide the participants with exposure to research projects and faculty at the Medical Center and also serve as a source of potential students for the biomedical sciences graduate programs.

A **Career Day Research Poster Session** was included in the activities on October 1, 2004. Fourteen graduate students in the Biomedical Sciences programs gave presentations which were well received by the more than fifty visiting students and faculty.

A Research Symposium, presented by the **Post-Baccalaureate Research Education Program (PREP) Scholars** was held on June 24, 2005. In addition to the research poster session, Dr. Kenneth Olden, Director, National Institute of Environmental Health and Safety at Research Triangle Park was the featured speaker. The PREP program continues to be very ably led by Dr. Debra Diz and is providing underrepresented minority students with opportunities to conduct research in the biomedical sciences and to strengthen their applications to graduate programs, including those at Wake Forest.

The Graduate School continued to **sponsor the visits of several distinguished guests**. In the area of career development, Dr. Reyad Sawafta, CEO, QuarTek Corporation, spoke on “The Pros and Cons of a Professor’s Journey from Academia to Industry” on February 25, 2005 and Dr. Jennifer A. Jenkins, Senior Scientist, Allergen Sales, LLC, presented “Guess Who’s Coming to Science” on April 22. These presentations were co-sponsored with the Department of Neurobiology and Anatomy and were part of the second-semester Graduate School course “Introduction to Professional Development in the Biomedical Sciences” that is required of all first year graduate students in the biomedical sciences. Other students and post-doctoral fellows were also invited to attend some of the sessions. The Graduate School co-sponsored the visit of Dr. Cynthia Robbins-Roth, Founding Partner, BioVenture Consultants, who spoke on “Alternate Careers in Science” on April 15. In addition, the visit of Dr. Bruce Freeman, Professor, Anesthesiology and Biochemistry and Director, Center for Free Radical Biology at the University of Alabama at Birmingham, was sponsored by the Graduate School as part of the Interdisciplinary Lecture Series, the Department of Biochemistry, the Comprehensive Cancer Center and the Department of Cancer Biology. Dr. Freeman spoke on “Yellow Grease: Pluripotent Cell Signaling Activity of Allylic Nitro Derivatives” on April 12. Dr. Freeman also spoke at the Sigma Xi Annual Spring Seminar and Banquet on April 13 on the topic “Be Still My Beating Heart: Oxygen Regulation of Vascular Cell Communication.”

The College and Graduate School co-sponsored the eighth annual **Hubert McNeill Poteat** Lecture on March 17 in Green Hall on the Reynolda campus. Dr. David Coates, Worrell Professor of Anglo-American Studies in the Department of Political Science, presented “Campaigning in Poetry, Governing in Prose: Tony Blair and the New Labour Britain” to a most appreciative audience of faculty and students. The Poteat lecture series continues to showcase the excellent scholarship of senior Reynolda campus faculty. Several female faculty from the School of Medicine put together a **Women’s Panel Discussion** for female graduate students and postdoctoral fellows entitled “Hearth and Bench: Balancing Personal and Professional Lives.” The panel included Dr. Susan Apt, (Comparative Medicine and Pathology), Dr. Susan Hutson (Biochemistry and Office of Research), Dr. Nancy Jones (Pathology) and Dr. Michelle Naughton (Public Health Sciences) on January 7, 2005.

Student Associations

The **Graduate Student Association (GSA)** was involved in several projects through the leadership of the GSA co-Presidents Racquel Collins (Cancer Biology) and Susan Walker, (Chemistry). The co-presidents participated in meetings of the Graduate Council and as members of the Policy Committee of the Council, providing the student perspective on many issues, particularly the proposed Honor Code. The GSA also assisted with the Forum and Research Day events. The GSA selected the winner of the

Faculty Excellence Award, Dr. Debbie Newsome (Counseling) and the hooders for the MA and MS degree recipients at the Hooding and Awards Ceremony. The GSA sponsored several events, including the Annual Spring 5K race on April 2 and raised several hundred dollars for charities. Representatives from the GSA discussed association activities at Career Day, new student orientation (both campuses) and the introductory session of PhD interview weekend for BMS students. The Graduate School provides some financial support to the GSA for its activities.

The **Black Graduate Student Association (BGSA)** hosted the sixth Annual Graduate and Professional School Forum on the Reynolda campus on October 16, 2004. The event was well organized by the BGSA President and a committee of students from both campuses. The theme of the Forum was “The Road Less Traveled: Navigating the Path to Success.” The program included two workshops in the morning session, “Inside the Admissions Committee” and Transitioning: Surviving the Weed-out Process.” A guest panel over lunch consisted of Dr. Derrick C. Tabor (NIH), Mr. Roy Mosley, Jr., (Merck Pharmaceuticals), Dr. Carlton Eversley (Wake Forest) and Dr. Marc Anthony Neal (Duke University). A Graduate School Fair was held following lunch, with several institutions from North Carolina sending representatives to meet with the students. Partial funding for the event was obtained from the Fund for Ethics and Leadership. Officers of the BGSA spoke at Graduate School events, including Career Day, new student orientation (both campuses) and PhD interview weekend for BMS students. The Graduate School provides some financial support to the BGSA for its activities.

The **MD/PhD Student Association** was led this year by Kimberly Blish (Molecular Medicine). The Association assisted with the MD/PhD student interviews by hosting interviewees. There are now fourteen students in the program, so a “critical mass” of students has been achieved. The association serves as an excellent student support group for the students and the program director, Dr. David Bass (Pulmonary and Critical Care Medicine). Kimberly attended the MD/PhD National Student Conference held in Keystone, Colorado in July 2005. The Graduate School provides some financial support to the Association for its activities.

The Wake Forest University Postdoctoral Association

The Postdoctoral Association (PDA) was formed three years ago, with administration of postdoctoral affairs being coordinated by Dean Melson through the Graduate School office on the Bowman Gray campus. Some financial support is provided to the PDA from the Graduate School for its activities. Thanks are expressed to Dr. Ellen Palmer (Microbiology and Immunology), President of the PDA for providing a summary of the PDA activities, which is presented below.

There was a change in leadership in the WFU Postdoctoral Association during 2004 when former postdoctoral fellow leader Dr. John Connor (Biochemistry) was promoted to a faculty position and postdoctoral fellow co-leader Ellen Palmer (Microbiology and Immunology) took over his role. Regular postdoc meetings restarted in November 2004 after a short hiatus and continued every 2-8 weeks.

The first goal of these meetings was to get postdoctoral fellows together to know one another better. Meeting discussions lead to a monthly postdoc social event at First Street

Draft House and has been attended by ~5 fellows on average since December 2004. The postdoc database (name, dept, e-mail address), which was originally compiled in the Graduate School of Arts and Sciences office and currently maintained by Ellen Palmer, was updated by receiving input from many fellows. The list is occasionally distributed to postdoctoral fellows by e-mail, asking for updated information to maintain the database as accurately as possible. The database is also posted on the WFU postdoctoral affairs website (www.wfubmc.edu/postdoc/). The current database lists information for 68 postdoctoral fellows in 16 departments. The postdoc meetings, social events and the database offer fellows an opportunity to know their colleagues.

The second goal of the postdoctoral fellow meetings was to recruit more persons into leadership roles. This goal was achieved many times over. Two postdoc career events titled WFUSM Postdoc Career Conversations were initiated and arranged by fellows Heidi Chial (Cancer Biology) and Alfonso Romero-Sandoval (Anesthesiology) in December 2004 and January 2005. These seminars were presented by WFU School of Medicine faculty members Dr. Doug Lyles (Biochemistry) and Dr. Jim Eisenach (Anesthesiology). Both faculty members shared their personal career stories, offered insights into academic success and answered questions from the attendees. Both career seminars attracted over 30 postdoctoral fellows and students, demonstrating broad postdoc interest in career-related topics. In March 2005, postdoctoral fellow Mohammad Islam (Biochemistry) represented Wake Forest University at the National Postdoctoral Association (NPA) meeting in San Diego, CA. The NPA offers many resources for postdoctoral associations across the country. In addition to those named here, other fellows from a variety of departments attend meetings regularly and offered their time and ideas.

The final goal of the PDA was spurred by the adoption of postdoctoral fellow training guidelines by the Department of Cancer Biology. This departmental policy has led to discussions of how fellows might work toward an institution-wide postdoc training policy at Wake Forest University. These discussions are on-going at postdoc meetings.

In the coming year, the WFU Postdoctoral Association plans to continue moving forward with social, career event and policy goals. Regular postdoc meetings and the monthly social outings will continue and a picnic for fellows and their families will be held in the late summer or early fall. Career-related seminars covering immigration issues for international postdoctoral fellows and a panel discussion with junior faculty about the academic job search are being planned. Finally, fellows will recruit a faculty advisor and continue strategizing for an institutional postdoctoral fellow policy.

Recruiting

Graduate School deans, staff and faculty were actively involved in recruiting this year. Emphasis was again placed on identifying applicants who are underrepresented minorities in their disciplines, mainly in the sciences and biomedical sciences.

Admissions Coordinator Carol DiGiantommaso attended graduate and professional fairs at Lenoir-Rhyne College, Appalachian State University, University of North Carolina (UNC)-Wilmington, UNC-Pembroke, East Carolina University and Wake Forest University. Associate Dean Solano attended the OPT-ED Alliance Day at North Carolina

State University (NCSU), Johnson C. Smith University and Shaw University. Beth Whitsett (Administrative Assistant) visited UNC-Charlotte and Winston-Salem State University (WSSU). Susan Pierce (Registrar and Coordinator, Biomedical Sciences Program) attended fairs at Virginia Tech, Duke University and North Carolina A&T State University. Dean Melson represented Wake Forest at the BGSA Forum and attended Florida A&M University (FAMU) with graduate student Curtis Henry (Microbiology), a 2003 graduate of FAMU. He also attended the annual meeting of the Society for the Advancement of Chicanos and Native Americans in Science in Austin, Texas in October 2004 (the first time that WFU has been represented at this meeting) and for the sixth time attended the Annual Biomedical Research Conference for Minority Students in Dallas. Faculty members were also engaged in recruiting, with Dr. Bruce King (Chemistry) attending the Southeastern Regional Meeting of the American Chemical Society. Drs. Keith Bonin (Physics), David John (Computer Sciences) and Paul Jones (Chemistry) attended the NCSU Physical and Mathematical Sciences fair. Dr. Joseph Milner (Education) attended a recruiting fair at George Washington University. Many other faculty members from both campuses delivered seminars and invited lectures at universities, colleges and professional meetings around the country to publicize research and graduate education opportunities at Wake Forest. Also, the increasing numbers of students who are now presenting their research at professional meetings serve as excellent recruiters for the graduate programs.

The Graduate School continues to maintain partnerships with a variety of schools and organizations. WFU is a member of the Graduate Feeder Scholars Program at Florida A&M University and a member of the Graduate Scholars Program at Tennessee State University. Wake Forest and North Carolina Central University (NCCU) have an NIH-Funded Bridge Program in which students at NCCU receive their master's degree in a science discipline (biology or chemistry) and then transition into one of the biomedical sciences PhD programs. WFU and WSSU have several partnerships in place for research collaborations, including participation in the NSF-funded Research Initiative for Minority Institutions (RIMI). WFU is a participant in the Visiting International Faculty (VIF) program through which international teachers (mainly high school) who are teaching in the US during the academic year obtain an MAED degree from WFU after three summers in residence. WFU has liaisons with the North Carolina Louis Stokes Alliance for Minority Participation (NC-LAMP) and the Louisiana LS-LAMP programs. WFU is also a founding member of the Consortium for American Indian Graduate Education. These partnerships and alliances assist in the continuing the Diversity Initiative program of the Graduate School which has been very effective in increasing the numbers of enrolled underrepresented minority students in graduate programs on both campuses.

The **Biomedical Sciences Career Day** was held on October 1, 2004; 66 students and faculty from 20 institutions attended. Dean Melson spoke at the Welcome and General Information Session. Students then visited labs in areas of their interest both before and after lunch. A Research Poster Session was held after lunch for the second year; 14 BMS graduate students participated. 41 evaluation forms were returned from student participants, with 38 rating the day as very successful and 3 responding that the day was fairly successful. 5 external applications were received; however, no applicants were offered admission.

The **Biomedical Sciences PhD Interview Weekend** was held on February 25 and 26, 2005. All BMS PhD programs participated. The Graduate School sponsored a reception and dinner on the evening of February 24, with graduate program directors from each program being present. At the opening session on the 25th, Dean Melson offered a welcome and provided an overview of the Graduate School and BMS graduate programs. Welcome comments were also provided by Racquel Collins (Cancer Biology) for the GSA and Curtis Henry (Microbiology and Immunology) for the BGSA. Interviews with faculty from each graduate program followed. Interview weekend continues to be an effective means of evaluating applicants and allows them the opportunity to interact with potential students from disciplines other than their own.

Sixty-two **applications to the MD/PhD program** were reviewed, with thirty-one considered to be competitive (screened by GPA >3.5 and MCAT > 33). Two days in December and one day in January were set aside for MD/PhD candidate interviews. These interviews were coordinated with those conducted by the School of Medicine. After considerable deliberation, the MD/PhD committee offered admission to two students with full tuition scholarships and stipends for all (seven) years of the program. Both students matriculated in the summer of 2005 and commenced research in their graduate programs of interest (Biomedical Engineering and Neuroscience).

Applications and Enrollment

Tables 2-7 present data for applicants and matriculants to the Reynolda campus (Reynolda) and to the Biomedical Sciences (BMS) programs. While the data are self-explanatory, some observations will be made.

The **numbers of applicants** for programs on both campuses remained high and increased compared with the previous year. The demographics of applicants and matriculants are shown in Table 4. The numbers of international (non-U.S. citizen) applications to the Reynolda and BMS programs increased compared with 2004, continuing a trend from the previous year (figures reported to CGS on June 30). Nationally, the numbers of international applications decreased, so the WFU trend is again in the opposite direction to the national trend. Selectivity remained at ~30% for both Reynolda and BMS programs, with yields lower this year for both campus programs (72 and 56% respectively) compared with the previous year.

Standardized scores and GPA averages for applicant, accepted and matriculant students for the past three years are shown in Table 6 and for matriculated students since 1993 in Table 7. GRE and GMAT test scores remained high and significantly above the national means for all programs. For students matriculating into the MD/PhD program, the average for the totals of Verbal, Physical and Biological scores remained at a consistently high level (34.5 for 2005).

Student enrollment (Table 8, fall 2005 figures) was at the highest level in the school's history, with a total of 743 students enrolled (Reynolda, 428; BMS, 315). Seven hundred and three (703) students were degree-seeking (413, Reynolda; 290, BMS), with a total of 344 in PhD programs (89, Reynolda; 255, BMS) and 359 in master's-only programs (324, Reynolda; 35, BMS).

The degree-seeking student profile data is presented in Table 9. As in previous years, female students outnumbered males on both campuses (58 to 42%, Reynolda; 55 to 45%, BMS). The Diversity Initiative of the Graduate School, which was begun in 1999-2000 with the goal of increasing (and retaining) underrepresented minority students, continued to be successful. For 2005, 10% of domestic students (9% of total enrollment) on the Reynolda campus were underrepresented minorities. In the BMS programs, underrepresented minority students comprised almost 21% of domestic students (17% of total enrollment). It should be noted that when the Diversity Initiative was begun, underrepresented minority enrollment stood at between 4-5% of total enrollments on each campus. International student enrollment was 10% of total enrollment on the Reynolda campus and 18% in the BMS programs. International students continue to enroll from many countries throughout the world (see Table 10).

In fall 2005 there were fourteen students enrolled in the **MD/PhD program**. Four students are enrolled in years 1 and 2 of the MD program; eight are currently conducting research for the PhD degree and two students are enrolled in years 3 and 4 of the MD program having completed all requirements for the PhD degree. Three students have completed the MD/PhD curriculum; one in 2004 and two in 2005.

Degrees Awarded and Placement

During the 2004-2005 year, two hundred and thirty-four students were awarded a master's or doctoral degree through the Graduate School, the highest number of degrees awarded in one year (see Table 11). The total number included forty-eight students who received PhD degrees, the most awarded by Wake Forest in one year and is almost double the number of PhD degrees awarded just three years ago (2001-2002). It is anticipated that the PhD productivity will continue to increase in the coming years, with an anticipated fifty degrees being awarded in one to two years, rather than within five years as predicted in last year's annual report.

The **time to the PhD degree (TTD)**, defined as the time from matriculation to awarding of the degree, is shown in Table 12. For all programs, students complete the PhD degree in a little over five years. This is an excellent time for graduation of WFU students when compared with a national average time for science graduates of between six and one half and seven years. Students enrolled in master's-only programs on a full-time basis complete their programs in two years or in the time designated for completion of all requirements (e.g., the MSA and the MAEd MTF and MTA programs).

Twelve students completed the MAEd degree through the **Visiting International Fellows (VIF)** Program. This third class to graduate from this three-summer program included students from Canada, Honduras, Jamaica, Kenya and Peru. A ceremony recognizing these students was held in the afternoon of August 10, 2005, following a morning session in which each student orally presented his or her completed research project. Each student received a letter certifying completion of all requirements from Dean Melson.

Table 13 shows **post-graduation plans** for students who completed the Graduate School Exit Survey.

The fifth annual **PhD Career Fair** was held on November 18, 2004 at the UNC Friday Center for Continuing Education in Chapel Hill. Susan Pierce represented Wake Forest in planning and attending the Fair, together with representatives from the Career Services offices of Duke University, North Carolina State University, UNC-Chapel Hill and UNC-Greensboro. The event was attended by students and postdoctoral fellows from all participating institutions. Twenty-five employers were represented.

Financial Support

Tables 14 and 15 show the financial support provided to students in the Reynolda campus and BMS graduate programs from 1998-99 to 2004-05. The University continues to be the principal source of support for tuition scholarships and for a significant number of teaching assistantships and graduate fellowships, especially for first-year students. It is imperative that Wake Forest continues to offer competitive stipends in each of its programs in order to attract the best available graduate students.

Stipends on the Reynolda campus were not increased from 2003-04 except for students in the Computer Science and Mathematics programs where increases were created at the expense of the number of students supported. This approach to stipend increases cannot be used frequently without adversely affecting the enrollment in these programs, especially in programs where a “critical mass” in the number of students has not yet been achieved.

The Graduate School and the Associate Provost for Research on the Reynolda campus (Dr. Mark Welker) agreed on a policy to generate funds for student stipends through tuition charges on external grant proposals. The policy allows for graduate student tuition charges to sponsored projects (where allowed by the sponsor) at 5% of the total direct costs requested annually up to \$100,000 per year. Proposals with annual direct costs of greater than \$100,000 per year request partial tuition of \$5,000 per assistant per year. Recovered funds for FY 05 will be transferred to the Graduate School on September 30, 2005 for support of the 2005-06 stipends, with those programs that generated the income being the recipients of the increase. More than \$5,000 was generated in FY 05, which was matched by Dr. Welker’s office at the level of ~\$10,000. Based on these figures, it is estimated that stipends for students in the graduate programs in biology, chemistry and physics will be increased significantly for the 2005-06 year. A determination will need to be made in February of each year concerning the amount of funds generated by the “5% account” in order to set the stipend level for the following year.

The **stipend for students in the BMS programs** was increased to \$20,772 for 2004-05, the NIH/NRSA approved stipend. The Graduate School contribution to the student health insurance premium was increased from \$100/month to \$150/month (\$1,800 per year) to help offset the almost 50% increase in premium being charged for individual coverage. The Graduate School appreciates the increase in this contribution which was provided by WFUHS following an “emergency” request just before the start of the fall 2004 semester. Increases in health insurance premiums are anticipated to continue in the future; such increases place a demand on the available funds to the Graduate School. However, it is essential that the premiums are covered to at least the current percentage (86%) with the goal of reaching 100% in the near future.

External support for Reynolda campus students in 2004-05 decreased from the previous year, which was disappointing following two years of growth in this area. The payment of graduate student stipends from external grants must remain a high priority in coming years. With WFU budget constraints expected to continue, increases in the numbers of students in graduate programs, particularly those offering the PhD degree, will be largely dependent on the receipt of additional external financial support. For the BMS programs, 150 students received support from external sources, compared with 100 just three years ago (2001-02). This is an outstanding increase; the faculty and students who received grants for student support are to be congratulated on their success over the past few years. The growth in the number of students in the BMS programs has largely been realized through this increase in external support.

The **William Randolph Hearst Endowed Scholarship for Minority Students** is an important part of the diversity initiative of the Graduate School, providing the stipend for an underrepresented minority student who is seeking a graduate degree on the Reynolda campus. The June 30, 2005 market value of the Hearst Scholarship fund was \$617,723. One award was made for the 2004-05 year, to Jean Rockford, a student in the Department of Physics. Since 1989, when the first William Randolph Hearst Endowed Scholarship for Minority Students was awarded, a total of \$207,807 has been awarded to 27 students. The Graduate School appreciates the support of the Hearst Foundation and especially thanks Mr. Robert M. Frehse Jr. for his support over the years.

Income from the **Salzman-Medica Foundation** again partially supported the travel expenses of graduate students on the Reynolda campus to national or international conferences where they were presenting their research. Eleven students from five graduate programs were supported from this source of funding.

The **Graduate School Annual Funds** (one for each campus) received donations from alumni and friends. Both mail and phonathon (September 1 - October 31, 2004) solicitations were successful for the BMS Fund. Ms. Helen Dowling, Assistant Director of Alumni Affairs at WFUHS again assisted the Graduate School in these fund-raising efforts. The 2004-05 fiscal year ended with a total of 87 donors (82 alumni, two corporations and three individuals). There were thirty-six new alumni donors and one new individual donor. A total of \$8,253 in gifts was received; the largest annual fund to date. On the Reynolda campus, phonathons were held on two evenings in March 2005 in addition to a mail solicitation. The phonathons raised \$2,420, the mailing \$3,820 for a total of \$6,240, which is almost double the amount raised from a mail solicitation only during the previous year.

The Annual Funds were used to create **Alumni Student Travel Award Programs** (one for each campus) to assist students who present their research at national and international meetings. In the BMS programs, eighteen students from all programs received travel awards to present their research. On the Reynolda campus, eight students from five graduate programs received travel awards.

The Graduate School expresses its deep appreciation to Dr. Mike Robbins (Radiation Oncology) for establishing the **Lucy Robbins Fellowship Award** for fourth-year graduate students conducting cancer-related research. The first award will be presented in the fall of 2005.

Three students received funding through the **Richter Scholars program** on the Reynolda campus for the support of international travel. The 2005 Richter Scholars were Blythe Ashcraft (Chemistry), travel to New Zealand, Dr. Robert Swofford advisor, Suchi Joshi (Communication), travel to the Netherlands, Dr. Steven Giles advisor and Meghan McGuire (English), travel to Ireland, Dr. Jefferson Holdridge advisor. A total of twelve applications were reviewed by a faculty committee chaired by Dr. Solano. Graduate students who have been named Richter Scholars have derived a variety of benefits from the program. Many students include research activities supported by the awards in their master's theses or doctoral dissertations as well as in conference presentations and professional publications. However, all recipients agree that the international experiences that they receive are the most memorable part of being a Richter Scholar.

The administration of the Graduate School appreciates the contributions of alumni and friends who have provided funds for the support of graduate students. It is hoped that such contributions will increase during the coming years to enable the programs described above to be expanded.

Professional Activities

Dean Melson and Associate Dean Solano continued to be involved in a variety of external professional activities during the year. Dr. Solano attended the annual meeting of the North Carolina Conference of Graduate Schools (NCCGS) at North Carolina A&T State University in Greensboro on November 3 and 4, 2004. The meeting was combined with the staff development workshop. Dr. Melson was re-elected as Treasurer of NCCGS for 2004-05.

Dean Melson attended the Conference of Southern Graduate Schools (CSGS) in Biloxi, MS in February 2005 and served as the facilitator for two Table Top sessions entitled "Partnerships: Pitfalls and Benefits." He also convened a meeting of graduate deans from Atlantic Coast Conference (ACC) member institutions. Eight institutions out of a possible eleven were represented. The Inter-Institutional Academic Collaborative of the Atlantic Coast Conference (IAC-ACC) Doctoral Traveling Scholars Program and other initiatives were discussed. The summer 2005 program held at both UNC-Chapel Hill and Wake Forest University and attended by students from both institutions was funded through the IAC-ACC program. Dr. Solano continued as a member of the master's thesis award committee for CSGS.

Dean Melson attended the annual meeting of the Council of Graduate Schools (CGS) in Washington DC, in December 2004 and the third annual meeting of the Consortium on American Graduate Education at the same meeting. He also attended a meeting on Graduate Education and American Competitiveness at the Library of Congress in Washington, DC that was supported by CGS and the Oak Ridge Associated Universities (ORAU) in March 2005.

Dr. Melson continued as the WFU Councilor to ORAU, but was unable to attend the annual meeting of ORAU in March due to a scheduling conflict. Membership in ORAU is beneficial to Wake Forest; a Department of Homeland Security Fellowship to support a graduate student in the Department of Biochemistry is administered through ORAU.

Also, two postdoctoral fellows received financial support through the Laboratory Research Participation Program at ORAU.

Dean Melson continued to serve as a member of the Board of the Virginia Tech-Wake Forest University School of Biomedical Engineering and Sciences, attending meetings of the Board in Blacksburg in fall 2004 and Winston-Salem in spring 2005.

Dr. Melson attended the 228th National Meeting of the American Chemical Society in Philadelphia in August 2004 and was honored to serve as the master of ceremonies for a reception and dinner recognizing Professor Daryle H. Busch, Roy A. Roberts Distinguished Professor of Chemistry at the University of Kansas and his "First 50 years of Leadership, Teaching, Research and Service."

PROJECTIONS FOR THE 2005-2006 YEAR

The financial constraints that have been part of the Graduate School's budgets for the past several years are expected to continue, especially for the support of graduate programs on the Reynolda campus. Some increases in stipends for students in departments that receive external support should be achieved through the tuition scholarship recovery mechanism. However, this will not completely remove the challenge to maintaining a competitive stipend for all students, regardless of graduate program. The provision of health care premiums for students in the PhD programs on the Reynolda campus must also be addressed during the coming year. The lack of funding for these premiums is placing these programs in a non-competitive position, even when compared with the BMS programs of the Graduate School. Increased efforts must be placed in seeking external financial support for graduate students.

Efforts to increase the contributions to the Graduate School Annual Funds must be undertaken, especially by working closely with the alumni and development offices on both campuses. The monies raised through solicitations to the funds are unrestricted and may be used in any manner that is determined to benefit graduate students by the Dean of the Graduate School. Currently, these funds are used for the support of student travel; however, not all the requests that are received from students are able to be funded.

Enrollment for the Graduate School is not anticipated to increase significantly for the 2006-07 year, although increased numbers of applications are expected for the Reynolda and BMS programs during 2005-06. Competition for the best available students is stiff and if WFU is to improve the quality of its matriculating students, recruitment efforts must be increased. The recommendations of the Task Force on Recruiting will be considered for implementation during the coming year. Recruiting efforts are expected to focus on providing accurate information through up-to-date websites for the Graduate School and for individual graduate programs and a re-worked on-line application. A Web Site Committee has been established to consider how the websites of departments and programs that are part of WFUHS may be more effective. This committee will make its recommendations during the coming year. Increased numbers of MD/PhD students are desirable. Currently, only two students matriculate into the program each year. These students receive full financial support for all seven years of the program. In order to increase the number of matriculants, significant amounts of additional resources will

be needed. Raising these funds from both internal and external sources will be a challenge that must be addressed in the coming year and in those ahead.

Recommendations from the BMS review will be considered during the year. A proposal for implementation of an Interdisciplinary Graduate Program in Biomedical Sciences (IGPBMS) will be prepared by the Graduate School for review and discussion by graduate program directors, faculty and department chairs.

Review of the Departments of Chemistry and Psychology will take place during 2005-06. These are the only two departments with graduate programs that will be reviewed this year. Financial support for the graduate programs in each department is certain to be a topic of discussion by both internal and external review teams. An informal review of the VIF graduate program in the Department of Education will be undertaken by the Graduate School.

The Graduate Council and Graduate Faculty will need to complete the discussions on the Honor Code for the Graduate School. A vote in both bodies should take place, with adoption of the Code occurring as soon as possible in 2005-06 if approved.

A proposal for the MA in bioethics should be developed by the Task Force on Bioethics and presented to the Graduate Council for consideration. The first graduate course in bioethics is scheduled to be given in fall 2005 through the Liberal Studies graduate program. Development of the course curriculum and schedule will take place during summer 2005. Discussions on the establishment of a Center for Ethics at WFU will continue, with efforts to raise funds for an endowed chair being a high priority.

Renovation of the Graduate School lecture room on the BG campus (Hanes 1064) was undertaken during the summer of 2005, with completion scheduled for the start of fall semester 2005. The renovated room will have first class facilities for computer applications/projection etc. and will be a great asset for faculty to teach in and for external speakers and visitors to appreciate.

Postdoctoral affairs will continue to be coordinated through the Graduate School office. A committee comprised of postdoctoral fellows, faculty and administrators should be established. This committee should consider issues that are important to postdoctoral fellows, including employment contracts, salaries and benefits, supervision/mentoring, professional development and the responsibilities of both the post doc and the faculty advisor.

Implementation of the admissions and record-keeping aspects of the new Banner administrative system on the Reynolda campus will continue. The development of an improved on-line application process will take place. Since the two parts of the Graduate School are administered separately, the application must be compatible with both the Banner system and the PeopleSoft system on the BG campus. This development will be quite a challenge and must involve personnel from Information Systems and Academic Computing on both campuses in addition to the Graduate School.

It is anticipated that discussions that began during 2004-05 between the Graduate School and the Babcock Graduate School of Management will continue. These discussions were focused on the development of combined degrees, such as an MBA/MS with emphasis on

health sciences and the possible incorporation of science courses into the MBA program and the development of tracks in, for example, biotechnology.

The SACS accreditation review for WFU will be completed in the coming year. Dr. Solano coordinated the collection of data on faculty and courses, wrote the text for the Graduate School and worked with associate deans from other schools. Dr. Solano will continue to be involved in the review process. The site visit to WFU by the accreditation team will occur in April 2006.

Dr. Solano will continue to serve as Associate Dean of the Graduate School, Graduate Program Director for the Liberal Studies Program and Associate Professor of Psychology. In her role as associate dean, she will continue to approve admissions for the Reynolda campus programs, serve as chair of faculty committees for awards and preside on committees, such as the Graduate Council, in the absence of Dean Melson. She will continue to serve on university committees, such as the Integrated Marketing Committee and on the Women's Leadership Forum, representing the Graduate School.

The 2005-06 year will be the first for the new President of Wake Forest University, Dr. Nathan O. Hatch who assumed the presidency on July 1, 2005. Dr. Hatch has served as Vice President for Graduate Studies and Research and as Provost at Notre Dame University, so the Graduate School and its faculty are looking forward to working with him on the promotion and development of graduate education at Wake Forest. A Summer Leadership Conference is scheduled for July 7-9, 2005 at the Greenbrier resort in West Virginia and a deans' retreat for the Reynolda campus with Dr. Hatch and Provost Gordon is scheduled for the Graylyn Conference Center in August. Dr. Hatch's inauguration as President will take place on October 20, 2005.

APPENDIX

Administration, Graduate School of Arts and Sciences

Gordon A. Melson, Ph.D., Dean of the Graduate School of Arts and Sciences,
Professor of Chemistry

Cecilia H. Solano, Ph.D., Associate Dean, Director of the MALS Program,
Associate Professor of Psychology

Debbie S. Deheck, Assistant to the Dean,
Reynolda Campus

Carol E. DiGiantomaso, Admissions Coordinator,
Reynolda Campus

Susan C. Pierce, Registrar and Coordinator,
Biomedical Sciences Program, Bowman Gray Campus

Kelley N. Reavis, Administrative Assistant,
Biomedical Sciences Program, Bowman Gray Campus

Beth R. Whitsett, Administrative Assistant,
Biomedical Sciences Program, Bowman Gray Campus

Wanda Duncan, Administrative Coordinator (part-time),
Reynolda Campus

Irene Picconi, Staff Assistant (part-time)
Reynolda Campus

Sheila White, Staff Assistant (part-time),
Reynolda Campus

Standing Committees of the Graduate School

Graduate Council

Gordon A. Melson, Dean of the Graduate School, Chair
Cecilia H. Solano, Associate Dean of the Graduate School
Martha Alexander-Miller, Microbiology and Immunology (2007)*
Robert Beck, for Will Fleeson, Psychology (2007)
Keith D. Bonin, Physics (2005)
Greg Kucera, Hematology/Oncology (2005)#
Leah P. McCoy, Education (2005)
Mark Miller, Cancer Biology (2006)
Pat Nixon, Health and Exercise Science (2006)

Graduate Council (cont)

Ronald W. Oppenheim, Neurobiology and Anatomy (2005)
Stephen Robinson, Mathematics (2007)
Peter Santago, Biomedical Engineering (2006)
Brian Tague, Biology (2006)
Susan Walker, Chemistry (GSA, Reynolda Campus)
Racquel Collins, Cancer Biology (GSA, Biomedical Sciences)

** Year term expires*

Secretary to the Council and Graduate Faculty

Graduate Council Committees

Credentials/Nominations Committee

Stephen Robinson (Chair)
Martha Alexander-Miller
Keith Bonin
Ronald Oppenheim

Curriculum Committee

Mark Miller (Chair)
Robert Beck
Greg Kucera
Pat Nixon

Policy Committee

Brian Tague (Chair)
Racquel Collins
Leah McCoy
Mark Payne
Peter Santago
Susan Walker

Biomedical Sciences Committee (Bowman Gray Campus)

Gordon A. Melson, Dean, Chair
Cecilia H. Solano, Associate Dean
Steven A. Akman, Cancer Biology
Martha Alexander-Miller, Microbiology and Immunology
David A. Bass, MD/PhD
Ronny A. Bell, Clinical Epidemiology and Health Services Research
Larry W. Daniel, Biochemistry
Dwayne Godwin, PhD/MBA
Craig Hamilton, Biomedical Engineering

Biomedical Sciences Committee (Bowman Gray Campus) (cont)

Mark O. Lively, Molecular Genetics
Michael Nader, Physiology and Pharmacology
Ronald W. Oppenheim, Neuroscience
John S. Parks, Molecular and Cellular Pathobiology
R. Mark Payne, Molecular Medicine
Emilio Salinas, Neurobiology and Anatomy
Patrick Ober, School of Medicine, ex-officio
Susan C. Pierce, Registrar and Coordinator

Graduate Program Directors Committee (Reynolda Campus)

Gordon A. Melson, Dean, Chair
Cecilia H. Solano, Associate Dean
Ed Allen, Mathematics
Terry A. Baker, Accountancy
Keith D. Bonin, Physics
Dale Dagenbach, Psychology
Samuel T. Gladding, Counseling
Kenneth G. Hoglund, Religion
David John, Computer Science
Bruce King, Chemistry
Scott Klein, English
Kathy Kron, Biology
Anthony P. Marsh, Health and Exercise Science
Leah P. McCoy, Education
Ananda Mitra, Communication
Cecilia H. Solano, MALS

MD/PhD Committee

David A. Bass, Internal Medicine, Pulmonary and Critical Care Medicine, Chair
Gordon A. Melson, Dean, Graduate School
Lewis H. Nelson, Associate Dean, Student Services and Admissions, School of Medicine

PhD/MBA Committee

Dwayne W. Godwin, Neurobiology and Anatomy, Chair
Carolyn P. Campbell, Babcock Graduate School of Management
J. Kendall Middaugh, Babcock Graduate School of Management
Mark O. Lively, Biochemistry
Mark T. Wallace, Neurobiology and Anatomy

Graduate Internships Committee

Michael Tytell, Neurobiology and Anatomy, Chair
Daniel Kim-Shapiro, Physics

Graduate Internships Committee (cont)

Gordon A. Melson, Dean, Graduate School
Peter Santago, Biomedical Engineering
Samir Shah, Graduate Student, Biomedical Engineering
Audrey Stone, Development and Alumni Affairs
Jeffrey Weiner, Physiology and Pharmacology

Biomedical Sciences Graduate Program Review Committee

Larry Daniel, Biochemistry, Chair
Ralph Abi-Habib, Biochemistry, International Student Representative
Martha Alexander-Miller, Microbiology and Immunology
Ronny Bell, Clinical Epidemiology and Health Services Research
Karin Drotschmann, Cancer Biology
Tiffany Fisher, BGSA
Craig Hamilton, Biomedical Engineering
Thomas Hollis, Biochemistry and Molecular Biology
Timothy Howard, Molecular Genetics
Mary Kushman, GSA
Ronald Oppenheim, Neuroscience
R. Mark Payne, Molecular Medicine
John Parks, Molecular and Cellular Pathobiology
Emilio Salinas, Neurobiology and Anatomy
Jenelle Timmins, GSA
Jeffrey Weiner, Physiology and Pharmacology

External Reviewers:

Sharon Milgram, Director, Interdisciplinary Biomedical Sciences Graduate Program,
University of North Carolina at Chapel Hill
James Patton, Director, Interdisciplinary Graduate Program in the Biological Sciences,
Vanderbilt University

Task Force on Recruitment

Cecilia Solano, Graduate School, Chair
Keith Bonin, Physics
Racquel Collins, GSA
Scott Cramer, Cancer Biology
Dale Dagenbach, Psychology
Monica Hall, BGSA
Ken Hoglund, Religion
Michael Nader, Physiology and Pharmacology
Griffith Parks, Microbiology and Immunology

Graduate Faculty Representatives

University Senate

Dale Dagenbach, Psychology (2005)
Gregory Shelness, Pathology/Comparative Medicine (2006)
Suzy Torti, Biochemistry (2008)

Faculty Grievance Liaison Persons

Dale Dagenbach, Psychology (2006) - Primary
Leslie B. Poole, Biochemistry (2006) - Alternate

Graduate Student Liaison Persons

Sara Jones, Physiology and Pharmacology (2006)
Clifford Zeyl, Biology (2006)

Task Force on Bioethics

Gordon A. Melson, Dean, Graduate School, Co-Chair
Sally A. Shumaker, Public Health Sciences, Co-Chair
Christine Coughlin, School of Law
Tom DuBose, Internal Medicine
Mark Hall, School of Law
Hannah Hardgrave, Philosophy
Michael Hyde, Communication
Nancy Jones, Pathology
Fred Kahl, Cardiology
James Toole, Neurology

Graduate School Advisory Committee (GSAC) of the Board of Visitors

Debra Bryant	Keswick, VA (2008)*
John Crowe	Davis, CA (2008)
Pete Daniel	Washington, DC (2005)
Gloria Graham	Winston-Salem, NC (2007)
George Hundley	Wynnewood, PA (2006)
Steve Hurst	New York, NY (2007)
Beverly Lambert	Roanoke, VA (2005)
Page Laughlin	Winston-Salem, NC (2008)
Bob Lee	Stanford, CT (2007)
Jack Lowden	Greenwich, CT (2008)
Whit McDowell	Charlotte, NC (2007)
Toby Moffett	Washington, DC (2008)
Doug Waller	Washington, DC (2006)
Woody Webb	Raleigh, NC (2005)

**Term Expires*

TABLE 1. GRADUATE PROGRAMS AT WAKE FOREST UNIVERSITY, 2004-2005

REYNOLDA CAMPUS PROGRAMS

ACC	Accountancy	MSA	With the Wayne Calloway School of Business and Accountancy
BIO	Biology	PhD, MS	
CHM	Chemistry	PhD, MS	
CNS	Counseling	MA	
COM	Communication	MA	
CSC	Computer Science	MS	
EDU	Education	MAEd	
ENG	English	MA	
HES	Health and Exercise Science	MS	
MLS	Liberal Studies	MALS	
MTH	Mathematics	MA	
PHY	Physics	PhD, MS	
PSY	Psychology	MA	
REL	Religion	MA	

BIOMEDICAL SCIENCES PROGRAMS

BICM	Biochemistry and Molecular Biology	PhD
BMES	Biomedical Engineering	PhD, MS
CABI	Cancer Biology	PhD
CEHS	Clinical Epidemiology and Health Services Research	MS
COMD	Comparative Medicine	MS
MICR	Microbiology and Immunology	PhD
MCPA	Molecular and Cellular Pathobiology	PhD
MOGN	Molecular Genetics	PhD
MOME	Molecular Medicine	PhD, MS
NBAT	Neurobiology and Anatomy	PhD
NUSC	Neuroscience	PhD
PSPR	Physiology and Pharmacology	PhD

COMBINED PROGRAMS

MD/PhD	With the WFU School of Medicine
PhD/MBA	With the WFU Babcock Graduate School of Management

**TABLE 2. APPLICATION STATISTICS
1993-2005**

REYNOLDA CAMPUS PROGRAMS

Year (Fall)	Applications	Accepted	Matriculated
1993	553	160 (28.9%)	132 (82.5%)
1994	590	184 (31.2%)	155 (84.2%)
1995	630	227 (36.0%)	190 (83.7%)
1996	581*	193 (33.2%)	172 (89.1%)
1997	642	189 (29.4%)	154 (81.5%)
1998	617	236 (38.2%)	171 (72.5%)
1999	569	262 (46.0%)	166 (63.3%)
2000	564	221 (39.1%)	174 (78.7%)
2001	607	247 (40.7%)	171 (69.2%)
2002	729	248 (34.0%)	181 (73.0%)
2003	640	239 (37.3%)	198 (82.8%)
2004	642	228 (35.5%)	186 (81.6%)
2005	773	271 (35.1%)	196 (72.3%)

BIOMEDICAL SCIENCES PROGRAMS

1993	368	78 (21.2%)	45 (51.3%)
1994	589	60 (10.2%)	44 (73.3%)
1995	333*	64 (19.2%)	36 (56.3%)
1996	265	64 (24.1%)	34 (56.3%)
1997	290	83 (28.6%)	42 (50.6%)
1998	315	87 (27.6%)	44 (50.6%)
1999	265	79 (29.8%)	43 (54.4%)
2000	325	87 (26.8%)	52 (59.8%)
2001	282	85 (30.1%)	47 (55.3%)
2002	329	98 (29.8%)	55 (56.1%)
2003	346	105 (30.3%)	73 (69.5%)
2004	401	120 (29.9%)	72 (60.0%)
2005	470	140 (29.8%)	79 (56.4%)

*Restrictions on international applications introduced

TABLE 3. STUDENT PROFILE, APPLICANTS, ACCEPTED, MATRICULANTS, FALL 2003 - FALL 2005

REYNOLDA CAMPUS PROGRAMS

	Male	Female	Unk	TOTAL	White	Black	Hispanic	Asian*	Am Ind	Intern#	Unk
<u>Applicants</u>											
2003	243	397	0	640	443	23	12	7	1	114	40
2004	237	405	0	642	423	20	11	10	0	131	47
2005	283	490	0	773	503	31	12	15	1	168	43
<u>Accepted</u>											
2003	92	147	0	239	185	9	2	3	0	29	11
2004	94	134	0	228	174	7	4	2	0	30	11
2005	112	159	0	271	218	13	5	8	0	21	6
<u>Selectivity</u>											
2003				37.3%							
2004				35.5%							
2005				35.1%							
<u>Matriculants</u>											
2003	83	115	0	198	176	6	2	4	0	10	0
2004	76	110	0	186	153	15	2	1	0	15	0
2005	80	116	0	196	163	10	3	5	0	15	0
<u>Yield</u>											
2003				82.8%							
2004				81.6%							
2005				72.3%							

BIOMEDICAL SCIENCES PROGRAMS

<u>Applicants</u>											
2003	163	182	1	346	161	26	8	22	2	114	13
2004	192	193	16	401	190	25	13	21	1	121	30
2005	215	251	4	470	212	19	10	21	0	179	29
<u>Accepted</u>											
2003	46	59	0	105	72	6	3	9	0	15	0
2004	47	73	0	120	77	10	5	2	0	20	6
2005	57	83	0	140	93	5	2	6	0	29	5
<u>Selectivity</u>											
2003				30.3%							
2004				29.9%							
2005				29.8%							
<u>Matriculants</u>											
2003	34	39	0	73	49	6	3	5	0	10	0
2004	30	42	0	72	43	8	3	1	0	17	0
2005	34	45	0	79	51	4	1	5	0	18	0
<u>Yield</u>											
2003				69.5%							
2004				60.0%							
2005				56.4%							

*U.S. Address, Asian Ethnicity

Non-U.S. Address, Ethnicity not checked

Applicants: Completed applications received**Accepted:** Students to whom offers of admission were made**Matriculants:** Students who enrolled

**TABLE 4. STUDENT PROFILE, APPLICANTS, MATRICULANTS, DEMOGRAPHICS
FALL 2003-FALL 2005**

REYNOLDA CAMPUS PROGRAMS

State*	2003		2004		2005	
	Applicants	Matriculants	Applicants	Matriculants	Applicants	Matriculants
AL	4	1	8	2	7	3
CA	5	1	13	7	10	1
FL	12	3	23	4	20	6
GA	24 (3.8%)	6 (3.0%)	22 (3.4%)	6 (3.2%)	19 (2.5%)	4 (2.0%)
MD	8	1	9	2	9	6
NC	325 (51%)	120 (61%)	278 (43.3%)	107 (57.5%)	330 (42.7%)	119 (60.7%)
NJ	1	0	5	1	5	0
NY	17	2	18	6	19	1
OH	14	5	10	0	18	4
PA	22 (3.4%)	4	19 (3.0%)	4	27 (3.5%)	4 (2.0%)
SC	36 (5.6%)	10 (5.1%)	27 (4.2%)	6 (3.2%)	20 (2.6%)	3 (1.5%)
TN	6	2	8	2	12	3
TX	8	3	5	1	10	2
VA	35 (5.5%)	10 (5.1%)	31 (4.8%)	9 (4.8%)	49 (6.3%)	12 (6.1%)
Other States	74 (12%)	20 (10.1%)	86 (13.4%)	14 (7.5%)	86 (11.1%)	13 (6.6%)
Intern &Unkn	49 (8%)	10 (5.1%)	80 (12.5%)	15 (8.1%)	132 (17.1%)	15 (7.7%)
TOTAL	640	198	642	186	773	196

*State of student permanent address

**TABLE 4 (CONT). STUDENT PROFILE, APPLICANTS, MATRICULANTS, DEMOGRAPHICS
FALL 2003-FALL 2005**

BIOMEDICAL SCIENCES PROGRAMS

State*	2003		2004		2005	
	Applicants	Matriculants	Applicants	Matriculants	Applicants	Matriculants
AL	0	0	1	0	3	0
CA	5	1	13	1	16	1
FL	14 (4.0%)	3 (4.1%)	15 (3.7%)	0	6 (1.3%)	1 (1.3%)
GA	10	2	12	4	7	0
MD	12	3	11	2	6	0
NC	70 (20.2%)	26 (35.6%)	82 (20.4%)	22 (30.6%)	78 (16.6%)	25 (31.6%)
NJ	5	2	7	1	13	4
NY	7	1	8	2	10	1
OH	5	1	7	3	10	3
PA	12 (3.5%)	3 (4.1%)	13 (3.2%)	1 (1.4%)	20 (4.3%)	2 (2.5%)
SC	7	1	8	2	6	2
TN	5	1	1	1	16	4
TX	8	1	11	3	11	1
VA	27	12	20	6	34	4
Other States	45 (13.0%)	6 (8.2%)	65 (16.2%)	6 (8.3%)	55 (11.7%)	13 (16.5%)
Intern &Unkn	114 (32.9%)	10 (13.7%)	127 (31.7%)	18 (25.0%)	179 (38.1%)	18 (22.8%)
TOTAL	346	73	401	72	470	79

*State of student permanent address

TABLE 5. US - CITIZEN¹/NON - CITIZEN² APPLICATIONS

	Reynolda		Biomedical Sciences	
	2004	2005	2004	2005
US Citizens	507	589	233	249
Non-Citizens	136	179	153	210
China	77	93	35	92
India	13	20	51	39

¹Includes permanent residents

²As reported to CGS, June 30 of each year

**TABLE 6. STANDARDIZED SCORES AND GRADE POINT AVERAGES (GPA)
FALL 2003-FALL 2005**

REYNOLDA CAMPUS PROGRAMS

	Verb	Quant	(V+Q)	Anal	TOTAL	GPA	TOEFL	GMAT	GRE Anal
<u>Applicants</u>									
2003	528	636	1164	623	1787	3.4	613	626	4.61
2004	531	631	1162	608	1770	3.4	607	627	4.67
2005	488	762	1250	541	1791	3.4	613	623	4.56
<u>Accepted</u>									
2003	560	664	1224	676	1900	3.5	627	639	
2004	579	690	1269	632	1901	3.5	603	639	4.84
2005	503	670	1173	641	1814	3.5	617	627	5.00
<u>Matriculants</u>									
2003	561	662	1223	673	1896	3.5	630	645	
2004	546	645	1191	637	1828	3.5	607	634	4.81
2005	495	669	1164	636	1800	3.5	617	635	4.86

BIOMEDICAL SCIENCES PROGRAMS

<u>Applicants</u>									
2003	536	681	1217	668	1885	3.3	258*		
2004	511	684	1195	597	1792	3.3	261*		
2005	497	690	1187	615	1802	3.4	258*		
<u>Accepted</u>									
2003	529	673	1202	667	1869	3.4	258*		
2004	519	681	1200	673	1873	3.5	266*		
2005	523	694	1217	645	1862	3.5	266*		
<u>Matriculants</u>									
2003	516	658	1174	652	1826	3.4	252*		
2004	503	670	1173	651	1824	3.4	265*		
2005	515	682	1197	617	1814	3.3	264*		

*Computer-based test results

**TABLE 7. STANDARDIZED TEST SCORES FOR MATRICULATED STUDENTS
GRADUATE RECORD EXAMINATION (GRE) SCORES**

REYNOLDA CAMPUS PROGRAMS

<u>Year (Fall)</u>	<u>Verbal (%)*</u>	<u>Quantitative (%)*</u>	<u>(Combined)</u>	<u>Analytical (%)*</u>	<u>(Total)</u>
1993	600	640	(1240)	664	(1904)
1994	610	640	(1250)	670	(1920)
1995	600	650	(1250)	680	(1930)
1996	530	610	(1140)	620	(1760)
1997	565	636	(1201)	657	(1858)
1998	539	601	(1140)	612	(1752)
1999	533	634	(1167)	622	(1789)
2000	535 (69%)	634 (64%)	(1169)	647 (74%)	(1816)
2001	523 (66%)	630 (62%)	(1153)	627 (68%)	(1780)
2002	515 (62%)	624 (57%)	(1139)	622 (62%)	(1761)
2003	561 (76%)	662 (64%)	(1223)	673 (71%)	(1896)
2004	546 (69%)	645 (55%)	(1191)	637 (65%)	(1828)
2005	495 (59%)	669 (62%)	(1164)	636 (64%)	(1800)

BIOMEDICAL SCIENCES PROGRAMS

1993	564	625	(1189)	612	(1801)
1994	541	653	(1194)	620	(1814)
1995	545	655	(1200)	653	(1853)
1996	564	680	(1244)	634	(1878)
1997	551	668	(1219)	636	(1855)
1998	534	643	(1177)	636	(1813)
1999	544	642	(1186)	657	(1843)
2000	531 (68%)	660 (71%)	(1191)	667 (79%)	(1858)
2001	517 (64%)	635 (63%)	(1152)	640 (72%)	(1792)
2002	525 (65%)	646 (59%)	(1171)	621 (61%)	(1792)
2003	516 (64%)	658 (64%)	(1174)	652 (68%)	(1826)
2004	503 (60%)	670 (62%)	(1173)	651	(1824)
2005	515 (64%)	682 (64%)	(1197)	617	(1814)

National mean all takers:

2000-2003	470	598	(1068)	4.2	
-----------	-----	-----	--------	-----	--

**TABLE 7 (CONT). STANDARDIZED TEST SCORES FOR MATRICULATED
STUDENTS GRADUATE MANAGEMENT ADMISSIONS TEST
GMAT SCORES**

ACCOUNTANCY PROGRAM

Year (Fall)	Score (%)*
1996	550
1997	615
1998	626
1999	649
2000	646 (84%)
2001	635 (81%)
2002	629 (80%)
2003	645 (81%)
2004	634 (79%)
2005	635 (80%)

National Mean (50%), all takers:

2000-2002	528
-----------	-----

*Percent of examinees scoring lower than stated score

**STANDARDIZED TEST SCORES FOR MATRICULATED STUDENTS
MEDICAL COLLEGE ADMISSIONS TEST (MCAT) SCORES**

MD/PhD PROGRAM

Year (Fall)	Verb	Phys	Biol	Total
1997				33
1998				34
1999				34
2000	7.5	11.5	11	30
2001	10	12	12	34
2002	12	12	10	34
2003	11	12	11	34
2004	8	13	11	32
2005	10	12.5	12	34.5

**TABLE 8. STUDENT ENROLLMENT
FALL 1998-FALL 2005**

REYNOLDA CAMPUS PROGRAMS

<u>Year</u>	<u>F98</u>	<u>F99</u>	<u>F00</u>	<u>F01</u>	<u>F02</u>	<u>F03</u>	<u>F04</u>	<u>F05</u>
PhD Programs								
BIO	29	35	35	25	31	39	36	38
CHM	29	25	26	35	34	33	30	34
PHY	20	18	17	24	23	24	22	17
TOTAL	78	78	78	84	88	96	88	89
Masters-only Programs								
ACC	66	39*	60*	58*	62*	58*	58*	62*
ANT	7	5	3	3	-----			
CNS	29	29	28	28	31	31	31	32
COM	25	20	19	19	21	25	23	23
CSC	12	15	14	14	16	17	13	12
EDU	35	32	24	29	30	32	33	29
ENG	16	20	20	17	20	26	26	26
HES	14	15	13	13	14	14	14	14
HST	21	9	5	1	-----			
MLS	52	61	62	48	52	76	68	70
MTH	14	12	14	14	9	14	14	14
PSY	23	24	26	28	30	28	24	25
REL	23	19	14	8	10	13	15	17
TOTAL	337	300	302	280	295	334	319	324
<u>Unclassified</u>								
TOTAL	26	22	19	33	20	21	15	15
<u>TOTAL</u>	<u>441</u>	<u>400</u>	<u>399</u>	<u>397</u>	<u>403</u>	<u>451</u>	<u>422</u>	<u>428</u>

* Does not include 4th year Accountancy students

**TABLE 8 (CONT). STUDENT ENROLLMENT
FALL 1998-FALL 2005**

BIOMEDICAL SCIENCES PROGRAMS

<u>Year</u>	<u>F98</u>	<u>F99</u>	<u>F00</u>	<u>F01</u>	<u>F02</u>	<u>F03</u>	<u>F04</u>	<u>F05</u>
<u>PhD Programs</u>								
BICM	23	24	21	21	24	25	31	30
BMES-WFU	9	10	10	6	8	9	11	17
BMES-VT	-----					8	15	20
CABI	7	11	12	18	23	22	23	22
MICR	19	20	21	22	26	28	32	34
MCPA	16	18	18	20	18	20	18	17
MOGN	11	13	12	14	14	16	18	19
MOME	3	7	11	13	16	23	24	30
NBAT	9	12	11	15	15	15	15	16
NUSC	18	19	19	22	27	25	27	25
PSPR	29	22	26	26	25	27	26	25
TOTAL	144	156	161	177	196	218	240	255
<u>Masters Programs</u>								
BMES-WFU	-----				0	1	1	1
BMES-VT	-----					5	10	11
CEHS	-----		10	19	18	17	15	-----
COMD	0	0	0	1	0	0	0	0
EPID	11	8	3	0	1	1	-----	-----
HSRE	6	7	5	2	2	1	1	-----
HSRP	-----							20
MCPA	0	0	0	0	0	0	0	1
MOME	0	0	1	0	0	1	1	1
PSPR	0	0	0	0	0	0	0	1
TOTAL	17	15	19	22	21	26	28	35
<u>Unclassified</u>								
TOTAL	9	12	6	9	22	22	20	25
<u>TOTAL</u>	<u>170</u>	<u>183</u>	<u>186</u>	<u>208</u>	<u>239</u>	<u>266</u>	<u>288</u>	<u>315</u>
<u>TOTAL GRADUATE STUDENT ENROLLMENT (ALL programs)</u>								
	611	583	585	605	642	717	710	743

**TABLE 9. STUDENT PROFILE, TOTAL ENROLLMENT, DEGREE-SEEKING STUDENTS
FALL 2004, FALL 2005**

REYNOLDA CAMPUS PROGRAMS

	2004			2005		
	<u>Total</u>	<u>Male</u>	<u>Female</u>	<u>Total</u>	<u>Male</u>	<u>Female</u>
African-American	30	16	14	25	9	16
Asian-American	3	0	3	6	2	4
Hispanic-American	4	0	4	6	1	5
Native-American	0	0	0	0	0	0
Total under-represented	37 (9.1%)	16	21	37 (9.0%)	12	25
White	328	137	189	334	139	195
Total Domestic	365	153	210	371	151	220
International	45 (11.1%)	23	21	42 (10.2%)	22	20
TOTAL	407	176	231	413	173	240

BIOMEDICAL SCIENCES PROGRAMS

	2004			2005		
	<u>Total</u>	<u>Male</u>	<u>Female</u>	<u>Total</u>	<u>Male</u>	<u>Female</u>
African-American	32	9	23	32*	9*	23
Asian-American	8	5	3	12	7	5
Hispanic-American	6	4	2	4	3	1
Native-American	1	0	1	1	0	1
Total under-represented	47 (17.5%)	18	29	49 (17.0%)	19	30
White	177	78	99	188	85	103
Total Domestic	224	96	128	237	104	133
International	44 (16.4%)	20	24	52 (18.0%)	24	28
TOTAL	268	116	152	289	128	161

*One male African-American enrolled in 2 programs

**TABLE 10. INTERNATIONAL STUDENT PROFILE
FALL 2004**

<u>Reynolda Campus</u>	<u>All (New)</u>	<u>Biomedical Sciences</u>	<u>All (New)</u>
<u>Country of Origin</u>		<u>Country of Origin</u>	
Argentina	1 (1)		
Austria	1 (1)	Belarus	1 (1)
Canada	2 (1)	Brazil	1
China	21 (6)	Canada	3 (1)
Eritrea	1	China	11 (4)
France	1	Czech Republic	1
Hong Kong	1	Dominican Republic	1 (1)
India	7 (2)	Ethiopia	1
Indonesia	2	Germany	1
Jamaica	3 (3)	India	11 (7)
Peru	2	Indonesia	1
Russia	1	Korea	1
United Kingdom	1 (1)	Lebanon	1
		Romania	1
		Russian Federation	1 (1)
		Seychelles	1
		Spain	2 (1)
		Sri Lanka	1
		Sweden	1
		Switzerland	1 (1)
		Taiwan	1
		United Kingdom	1
Total	44 (15)	Total	44 (17)
Degree-seeking enrollment:	407 (186)	Degree-seeking enrollment:	268 (72)
<u>% International: 10.8 (8.1)%</u>		<u>% International: 16.4(23.6)%</u>	

Total International: 88(13.0%)(32)(12.4%)

<u>Programs of Study</u>		<u>Programs of Study</u>	
Accountancy	2	Biochemistry/Molecular Biology	5 (1)
Biology	6 (2)	Cancer Biology	6 (4)
Chemistry	14 (2)	Clinical Epidemiology/Health Serv Res	3
Communication	1 (1)	Biomedical Engineering	9 (6)
Computer Science	4 (2)	Microbiology/Immunology	4 (1)
Counseling	0	Molecular/Cellular Pathobiology	1
Education	6 (6)	Molecular Genetics	1
English	0	Molecular Medicine	4 (2)
Health and Exercise Science	0	Neurobiology/Anatomy	3 (2)
Liberal Studies	1	Neuroscience	2
Mathematics	3 (1)	Pharmacology	4 (1)
Physics	7 (1)	Physiology	2
Psychology	0		
Religion	0		

**TABLE 10. INTERNATIONAL STUDENT PROFILE
FALL 2005**

<u>Reynolda Campus</u>	<u>All (New)</u>	<u>Biomedical Sciences</u>	<u>All (New)</u>
<u>Country of Origin</u>		<u>Country of Origin</u>	
Austria	1	Belarus	1
Belarus	1 (1)	Brazil	1
Canada	2	Canada	2
China	18 (5)	China	13 (5)
Columbia	1 (1)	Dominican Republic	1
Egypt	1 (1)	Ethiopia	1
France	1 (1)	Germany	2 (1)
India	8 (3)	Ghana	1 (1)
Indonesia	2	India	17 (7)
Japan	1 (1)	Indonesia	1
Mexico	1 (1)	Japan	1 (1)
Peru	1	Korea	3 (2)
Russia	1	Lebanon	1
Turkey	1 (1)	Norway	1 (1)
United Kingdom	1	Poland	1
Vietnam	1	Romania	1
		Russian Federation	1
		Seychelles	1
		Spain	1
		Sri Lanka	1
		Switzerland	1
		Taiwan	1
Total	42 (15)	Total	54 (18)
Degree-seeking enrollment: 413 (196)		Degree-seeking enrollment: 290 (79)	
<u>% International: 10.2% (7.7%)</u>		<u>% International: 18.6% (22.8%)</u>	

Total International: 96(13.7%)(33)(12.0%)

<u>Programs of Study</u>		<u>Programs of Study</u>	
Accountancy	3 (3)	Biochemistry/Molecular Biology	5 (1)
Biology	7 (2)	Biomedical Engineering	11 (5)
Chemistry	14 (4)	Cancer Biology	7 (1)
Communication	2 (1)	Clinical Epid/Health Serv Res	0 (0)
Computer Science	2 (0)	Health Sciences Research	5 (2)
Counseling	1 (1)	Microbiology/Immunology	5 (1)
Education	3 (1)	Molecular/Cellular Pathobiology	3 (2)
English	1 (1)	Molecular Genetics	2 (2)
Health and Exercise	0 (0)	Molecular Medicine	5 (1)
Liberal Studies	1 (0)	Neurobiology/Anatomy	5 (2)
Mathematics	3 (1)	Neuroscience	2 (1)
Physics	5 (1)	Physiology/Pharmacology	4 (0)
Psychology	0 (0)		
Religion	0 (0)		

**TABLE 11. DEGREES AWARDED
1998-1999 TO 2004-2005**

REYNOLDA CAMPUS PROGRAMS

<u>Year</u>	<u>98-99</u>	<u>99-00</u>	<u>00-01</u>	<u>01-02</u>	<u>02-03</u>	<u>03-04</u>	<u>04-05</u>
<u>Ph.D. (M.S.)</u>							
BIO	1 (8)	1 (7)	4 (7)	1 (4)	1 (7)	2 (4)	4 (5)
CHM	8 (0)	6 (1)	1 (1)	4 (0)	3 (3)	3 (4)	5 (0)
PHY	2 (2)	4 (0)	0 (2)	3 (1)	3 (0)	6 (1)	5 (0)
TOTAL	11 (10)	11 (8)	5 (10)	8 (5)	7 (10)	11 (9)	14 (5)

Masters degrees from Masters -only programs

ACC	27	35	44	42	52	47	46
ANT	3	0	0	4	-----		
CNS							15
COM	7	12	8	11	9	13	6
CSC	7	10	10	3	8	12	10
EDU(C)	16	15	14	12	15	16	-----
EDU(T)	37	32	28	22	26	33	37
ENG	9	6	14	1	7	5	16
HES	7	7	7	6	7	7	7
HST	2	6	1	2	1	-----	
MLS	5	13	10	14	13	9	9
MTH	8	5	6	7	5	4	7
PSY	8	11	10	14	10	12	12
REL	9	1	6	2	1	3	4
TOTAL	142	147	158	140	154	161	169
TOTAL	11(152)	11(155)	5(168)	8(145)	7(164)	11 (170)	14 (174)

**TABLE 11 (CONT). DEGREES AWARDED
1998-1999 TO 2004-2005**

BIOMEDICAL SCIENCES PROGRAMS

<u>Year</u>	<u>98-99</u>	<u>99-00</u>	<u>00-01</u>	<u>01-02</u>	<u>02-03</u>	<u>03-04</u>	<u>04-05</u>
<u>Ph.D. (M.S.)</u>							
BICM	2 (1)	3 (0)	7 (1)	2 (0)	4 (0)	2 (1)	4 (0)
BMES							
WFU -----		1(0)	3 (0)	1 (0)	1 (0)	2 (0)	2 (0)
VT -----						0 (1)	0 (3)
CABI -----		1(0)	1 (0)	0 (0)	4 (0)	3 (1)	4 (0)
MICR	4 (0)	2 (0)	2 (0)	2 (0)	4 (0)	3 (0)	3 (0)
MCPA	1 (1)	1 (0)	2 (0)	3 (0)	2 (3)	2 (0)	4 (1)
MOGN	0 (0)	2 (0)	1 (0)	1 (0)	3 (1)	1 (0)	4 (0)
MOME -----				2 (0)	0 (0)	4 (0)	3 (0)
NBAT	1 (1)	1 (1)	0 (1)	1 (0)	2 (0)	3 (0)	1 (0)
NUSC	2 (0)	2 (0)	1 (0)	1 (0)	3 (0)	4 (0)	5 (1)
PHAR	8 (0)	3 (1)	3 (0)	4 (0)	4 (0)	4 (1)	0 (1)
PHYS	2 (0)	1 (0)	0 (0)	0 (0)	2 (0)	1 (0)	0 (0)
PSPR -----							4 (0)
TOTAL	20 (3)	17 (2)	20 (2)	17 (0)	29 (4)	29 (4)	34 (6)

M.S. from Masters-only programs

CEHS -----				5	5	7	6
COMD	0	0	0	0	0	0	0
EPID	2	3	3	0	0	1 -----	
HSRE		1	1	1	1 -----		
TOTAL	2	4	4	6	6	8	6
<u>TOTAL</u>	<u>20(5)</u>	<u>17(6)</u>	<u>20(6)</u>	<u>17(6)</u>	<u>29 (10)</u>	<u>29 (12)</u>	<u>34 (12)</u>

TOTAL NUMBER OF DEGREES AWARDED (All programs)

31(157)	28(161)	25(174)	25(151)	36(174)	40 (182)	48 (186)
----------------	----------------	----------------	----------------	----------------	-----------------	-----------------

**TABLE 12. TIME TO PhD DEGREE
1999-2000 TO 2004-2005**

	Number of Years*	
	<u>Reynolda Campus Programs</u>	<u>Biomedical Sciences Programs</u>
Year		
99-00	5.5	5.1
00-01	†	4.8
01-02	5.5	5.2
02-03	5.7	5.2
03-04	4.8	5.2
04-05	5.2	5.2
5-year Average	5.3	5.1

*Years from matriculation to awarding of the degree

†Data not available

**TABLE 13. PLACEMENT
2004-2005**

REYNOLDA CAMPUS GRADUATES

<u>Program</u>	<u>U/Grad</u>	<u>Degree</u>	<u>Plans</u>
ACC	Davidson College	MSA	Deloitte & Touche LLP, Charlotte, NC Pursue MBA, WFU
	Duke University		Ernst & Young, Atlanta, GA
	Southeast University		Deloitte & Touche LLP, Charlotte, NC
	UIBE		Auditor, Accounting Firm, New York
	UNC-Chapel Hill		Pricewaterhouse Coopers, Atlanta, GA Analyst, Wachovia Securities, Charlotte, NC
	UNC-Wilmington		Ernst & Young, Greensboro, NC
	Virginia Tech		Accountant, CPA Firm, Raleigh, NC
	Wake Forest University*		Ernst & Young, New York, NY Tax Associate, Grant Thornton, Charlotte, NC Staff Accountant, Scharf Pera & Co., Charlotte, NC Pricewaterhouse Coopers, Dallas, TX Ernst & Young, Atlanta, GA (3) KPMG, Chicago, IL (2) Reznick, Fedder & Silverman, Charlotte, NC (2) Investment Banking, Blackstone, New York, NY Deloitte & Touche LLP, Boston, MA Financial Analyst, Harris Williams & Co., Richmond, VA Pricewaterhouse Coopers, Boston, MA (4) Analyst, Bank of America Securities, New York, NY Ernst & Young, Houston, TX Investment Banking Analyst, KSA, Atlanta, GA Pricewaterhouse Coopers, Charlotte, NC (2) Global Portfolio Management Analyst, Bank of America, Dallas, TX Pricewaterhouse Coopers, Greensboro, NC Pricewaterhouse Coopers, Baltimore, MD Reznick, Fedder & Silverman, Baltimore, MD Location Unknown

*All subsequent from WFU

**TABLE 13 (CONT). PLACEMENT
2004-2005**

REYNOLDA CAMPUS GRADUATES

<u>Program</u>	<u>U/Grad</u>	<u>Degree</u>	<u>Plans</u>
ACC	Wake Forest University*	MSA	Deloitte & Touche, Charlotte, NC (2) Accountant, DuPont, Wilmington, DE Pricewaterhouse Coopers, New York, NY Equity Research Analyst, Montag and Caldwell, Atlanta, GA Securities and Exchange Commission, Washington, DC Audit Associate, Grant Thornton, LLP, Chicago, IL Investment Banking, Wachovia, Charlotte, NC (2)
*All subsequent from WFU			
BIO	University of Maine University of New Mexico UNC-Charlotte Wake Forest University Bob Jones University Campbell University Florida Institute of Technology High Point University Univ. of California - Santa Barbara	PhD MS	Post Doc - Biology/Ecology, Boston University, Boston, MA Post Doc, Government Lab, CA Post Doc, UNC-Wilmington, Wilmington, NC Post Doc, Colorado State University, Fort Collins, CO Lab Tech, Location Unknown Research Tech, Duke University, Durham, NC Pursue PhD - Biology/Ecology, WFU Pursue PhD - Biology, WFU Field Research, Dept. of Fisheries, Wildlife and Conservation Biology, University of Minnesota, St. Paul, MN
CHM	Calvin College College of Wooster East China University of Science and Technology Nowgong College UNC-Asheville	PhD	Faculty, Covenant College, Lookout Mountain, GA Asst. Professor, Applachian State University, Boone, NC Location Unknown Post Doc - Biochemistry, Massachusetts Institute of Technology, Cambridge, MA Post Doc, University of Pennsylvania, Philadelphia, PA

**TABLE 13 (CONT). PLACEMENT
2004-2005**

REYNOLDA CAMPUS GRADUATES

<u>Program</u>	<u>U/Grad</u>	<u>Degree</u>	<u>Plans</u>
CNS	Centre College	MA	Counselor, NC
	Colby College		Director of Lay Ministry, Centenary United Methodist Church, Winston-Salem, NC
	Duke University		High School Counselor, Location Unknown
	Jamestown College		Director of College Life & Housing, North Carolina School of the Arts, Winston-Salem, NC
	Kenyon College		School Counseling, Location Unknown
	Mary Baldwin College		ES/MS Counselor, International School of Islamabad, Islamabad, Pakistan
	St. Edwards University		School Counselor, Summit School, Winston-Salem, NC
	State Univ. of New York at Geneseo		Counselor, Winston-Salem, NC
	University of Georgia		Residence Life, Duke University, Durham, NC Elementary School Counselor, Athens, GA
	UNC-Chapel Hill		Counselor, Catholic Social Services, Winston-Salem, NC
	UNC-Greensboro		Counselor, Wilmington, NC
	Wake Forest University		School Counselor, Location Unknown
	Wingate University		Residence Coordinator, East Carolina University, Greenville, NC
COM	College of Wooster	MA	Sr. Regulatory Compliance Analyst, AFLAC, Columbus, GA
	Denison University		Writing, US Senate, Washington, DC
	Marist College		Teaching, Location Unknown
	Mary Washington College		Location Unknown
	Towson University		Pursue Master of Theology, Location Unknown
	UNC-Greensboro		Pursue PhD - Communications, University of South Florida
CSC	Catholic University	MS	Location Unknown
	Chinese Univ. of Hong Kong		Pursue PhD - Computational Mathematics, Emory University, Atlanta, GA
	Elon University		Software Engineer, Location Unknown (2)
	Franklin University		Location Unknown
	High Point University		Location Unknown

**TABLE 13 (CONT). PLACEMENT
2004-2005**

REYNOLDA CAMPUS GRADUATES

<u>Program</u>	<u>U/Grad</u>	<u>Degree</u>	<u>Plans</u>
CSC	Jilin University Mars Hill College Wake Forest University	MS	Location Unknown Location Unknown Consultant, Navigant Consulting, Washington, DC
EDU	UNC-Asheville UNC-Chapel Hill Wake Forest University	MAEd	Teaching, Hickory, NC Math Teacher, Green Hope High School, Cary, NC Teacher, Grayson County, VA Teacher, North Penn School District, PA Social Studies Teacher, East Forsyth High School, Kernersville, NC Chemistry Teacher, Mountain Brook High School, Birmingham, AL Social Studies Teacher, Charlotte, NC Location Unknown
ENG	Catawba College Davidson College Georgia Southern University Lafayette College Meredith College Otterbein College University of Florida Univ. of Massachusetts - Amherst UNC-Asheville UNC-Chapel Hill Univ. of South Carolina-Columbia Wake Forest University Washington and Lee Westminster College Yale University	MA	Teaching, Location Unknown Pursue Law Degree, WFU Pursue MLS - Library Science, University of South Carolina, Columbia, SC Location Unknown Adjunct Instructor, High Point University High Point, NC Location Unknown Location Unknown Library Staff, Z. Smith Reynolds Library, WFU Teach High School English, Jacksonville, FL Location Unknown English Teacher, Middlesbrough, United Kingdom Pursue PhD in English, Location Unknown Project Assistant in Law Firm, North Carolina Pursue PhD in English, University of Utah, Salt Lake City, UT Pursue PhD in English, Location Unknown
HES	Appalachian State Calvin College	MS	Cardiac Rehab or Research Coordinator, Greenville, SC PT Tech, Winston-Salem, NC

**TABLE 13 (CONT). PLACEMENT
2004-2005**

REYNOLDA CAMPUS GRADUATES

<u>Program</u>	<u>U/Grad</u>	<u>Degree</u>	<u>Plans</u>
HES	Colorado State University	MS	Exercise Physiologist, Hartford Hospital, Hartford, CT
	Hastings College		Boston, MA
	Mount Union		Location Unknown
	University of Delaware		Pursue PhD, Location Unknown
	University of Tulsa		Clinical Research or Exercise Physiology, Atlanta, GA
MLS	Bluefield College	MALS	Pursue Degree in Counseling/Education, Appalachian State Univ., Boone, NC
	Elon College		Location Unknown
	Hanover College		Employed at WFU
	Michigan State University		Unknown
	University of Texas		Marketing/Sales Support, Location Unknown
	Wake Forest University		Pursue PhD - Education or History, UNC
	Western Carolina University		Teaching, Location Unknown WFU Employee Location Unknown
MTH	Chinese Univ. of Hong Kong	MA	Pursue PhD in Mathematics, UCLA
	Elon University		Location Unknown
	James Madison University		Pursue PhD in Mathematics, Bryn Mawr College, Bryn Mawr, PA
	Lenoir-Rhyne College		Analyst, Location Unknown
	Mississippi College		Location Unknown
	Virginia State University		Mathematics Instructor, Location Unknown
			Teaching - Public School System, VA
PHY	Clemson University	PhD	Location Unknown
	Jilin University		Research Position, Location Unknown
	Nankai University		Research Position, Florida State University, Tallahassee, FL
	UOA		Location Unknown
	University of Science & Technology - China		Post Doc, Pacific Northwest National Lab
PSY	Appalachian State University	MA	Richmond, VA
	Randolph-Macon Woman's College		Pursue PhD in Human Development, University of Maryland, College Park, MD

**TABLE 13 (CONT). PLACEMENT
2004-2005**

REYNOLDA CAMPUS GRADUATES

<u>Program</u>	<u>U/Grad</u>	<u>Degree</u>	<u>Plans</u>
PSY	Skidmore College	MA	Pursue PhD - Biological & Health, University of Pittsburgh, Pittsburgh, PA
	Southern Illinois University		Pursue PhD - Psychology, Kent State University, Kent, OH
	Southwestern University		Pursue PhD - Psychology, Rice University, Houston, TX (2)
	Tokyo Gakugei University		Human Resources, Marketing Recruiters, Nashville, TN
	University of Florida		Unknown
	UNC - Greensboro		Pursue PhD - Psychology, Duke University, Durham, NC
	Wake Forest University		Pursue PhD - School Psychiatry, University of Georgia, Athens, GA
	Willamette University		Location Unknown Pursue PhD - Psychology, University of Kentucky, Lexington, KY
REL	Furman University	MA	Asst. Director, Riley Institute, Furman University, Greenville, SC
	Mary Washington College		Pursue PhD - Asian Religions, Location Unknown
	Shorter College		Location Unknown
	University of Pittsburgh		Pursue Law Degree, University of Pittsburgh, Pittsburgh, PA

**TABLE 13 (CONT). PLACEMENT
2004-2005**

BIOMEDICAL SCIENCES GRADUATES

<u>Program</u>	<u>U/Grad</u>	<u>Degree</u>	<u>Plans</u>
BICM	Bob Jones University Gettysburg College Guilford College Lund University	PhD	Post Doc, WFUSM Post Doc, WFUSM Post Doc, NIEHS, Research Triangle Park, NC Post Doc, WFUSM
BMES	Bilkent University University of Science & Technology of China	PhD	GE Medical Systems, Milwaukee, WI R&D Engineering, Boston Scientific, Boston, MA
CABI	Indiana Univ. of Pennsylvania Millersville Univ. of Pennsylvania Salem College Wake Forest University	PhD	Medical Writer, DVC Healthcare, Yardley, PA Post Doc, Emory University, Atlanta, GA Post Doc, Tulane University, New Orleans, LA Post Doc, WFUSM
CEHS	The College of New Jersey Douglass College, Rutgers Univ. University of Arizona UNC-Chapel Hill Univ. of Southern California University of Texas, Austin	MS	Faculty, WFUSM Harborview Injury Prevention & Research Center Seattle, WA Faculty, WFUSM Faculty, WFUSM Private Practice in Neonatology, Milwaukee, WI Fellowship in Cardiology, WFUSM
MICR	NC State University Univ. of Alabama, Huntsville UNC-Charlotte	PhD	Post Doc, Johns Hopkins University, Baltimore, MD Post Doc, WFUSM Unknown
MCPA	Beijing Medical University Davidson College Susquehanna University UNC-Charlotte Purdue University	PhD MS	Pursue MS in Biostatistics, UNC-Chapel Hill Faculty, WFUSM Post Doc, Pennsylvania Unknown Pursue PhD, University of Helsinki, Finland
MOGN	Louisiana State University Ohio State University Presbyterian College Virginia Military Institute	PhD	Post Doc, CDC, Atlanta, GA Post Doc, Children's Hospital, University of Pennsylvania, Philadelphia, PA Post Doc, WFUSM Pursue MD, WFUSM

**TABLE 13 (CONT). PLACEMENT
2004-2005**

BIOMEDICAL SCIENCES GRADUATES

<u>Program</u>	<u>U/Grad</u>	<u>Degree</u>	<u>Plans</u>
MOME	Univ. of California, San Diego Virginia Tech	PhD	MD Student, WFUSM Post Doc, Baylor College of Medicine, Houston, TX Clinical Research, Carolinas Medical Center, Charlotte, NC
NBAT	University of Massachusetts, Amherst	PhD	Medical Writer, BESTMED, New York, NY
NUSC	College of William & Mary Hampton University Hunan Medical University Miami University University of Connecticut Mount Union College	PhD MS	Post Doc, University of Pennsylvania, Philadelphia, PA Post Doc, UCLA Post Doc, WFUSM Corbett-Accel, New York, NY Post Doc, UNC-Chapel Hill, Chapel Hill, NC Unknown
PSPR	Duke University Maryville College McGill University Univ. of Alicante University of Delaware	PhD MS	Medical Writer, Complete Healthcare Communications, Chadds Ford, PA Post Doc, University of Tennessee at Knoxville, Knoxville, TN Post Doc, University of Pittsburgh, Pittsburgh, PA Physiology Instructor, Univ. of Alicante, Spain Synchrogenix, Wilmington, DE

**TABLE 14. FINANCIAL AID
1998-1999 TO 2004-2005**

REYNOLDA CAMPUS PROGRAMS

<u>Year</u>	<u>98-99</u>	<u>99-00</u>	<u>00-01</u>	<u>01-02</u>	<u>02-03</u>	<u>03-04</u>	<u>04-05</u>
<u>Tuition</u>	17,150	18,000	19,800	20,790	22,200	23,310	24,475
<u>Stipend (10 months, *12 months)</u>							
Fellowship	4,000	4,000	4,000	4,000	4,000	4,000	4,000
MTF	4,000 *	4,000 *	4,000	6,000	6,000	6,000 *	6,000 *
MTF (min)	8,000 *	8,000 *	8,000	8,000	8,000	8,000 *	8,000 *
Dean's Assistantship				17,000	17,500	17,500	17,500
Dean's Assistantship-BIO, PHY						17,500	17,500
Dean's Assistantship-CHM						19,500 *	19,500 *
BIO	12,500 *	12,500	13,000	13,500	14,000	14,000	14,000
CHM	14,000 *	14,500 *	15,000 *	15,500 *	16,000 *	17,500 *	17,500 *
PHY	12,500 *	13,000 *	13,500	14,000	14,500	14,500	14,500
ACC	6,000	6,000	6,000	6,000	6,000	6,000	6,000
CSC, MTH	8,500	9,000	9,500	9,500	10,000	10,000	
CSC							12,000
HES	8,000	8,000	8,500	8,500	8,500	8,500	8,500
MTH							10,000
PSY	8,000	8,000	8,500	8,500	8,500	8,500	8,500
CNS, COM, EDU, ENG, REL	7,000	7,000	7,000	8,000	8,000	8,000	8,000

BIOMEDICAL SCIENCES PROGRAMS

<u>Tuition#</u>	17,450	18,300	20,100	21,090	22,500	23,610	24,775
------------------------	--------	--------	--------	--------	--------	--------	---------------

Stipend (12 months)

ALL PROGRAMS

15,000 +	15,500 +	16,000 +	16,500 +	18,500 +	20,000 +	20,772 +
----------	----------	----------	----------	----------	----------	-----------------

Includes summer tuition of \$300 per year

+ Plus contribution to health insurance premium

(98-99, \$600; 99-00, \$750; 00-01, \$900; 01-02, \$900; 02-03, \$900; 03-04, \$1,200;
04-05, \$1,800)

**TABLE 15. SOURCES OF FINANCIAL AID
1998-1999 TO 2004-2005**

REYNOLDA CAMPUS PROGRAMS

<u>Year</u>	<u>98-99</u>	<u>99-00</u>	<u>00-01</u>	<u>01-02</u>	<u>02-03</u>	<u>03-04</u>	<u>04-05</u>
Assistantships	112	110	126	125	133	142	142
William Randolph Hearst Minority Assistantship				1	1	2	1
Dean's Fellowships (PhD programs)			3	3	3		2
Educators					7 ⁽²⁾	15	12
Fellowships	52	37	18	20	31	32	32
Scholarships/FT (#external support, of total)	90 (15)	107 (26)	120 (22)	96 (22)	99 (34)	113 (37)	106 (31)
Scholarships/PT	15	15	9	9	10	7	5
One-Half Scholarships					33 ⁽²⁾	32	32
Total with support	269	269	276	254	317	345	332
Self-Support	172	131	123	143	86	106	75
TOTALS	441	400	399	397	403	451	407
% Students receiving some financial aid	61.0	67.2	69.2	63.6	78.6	76.5	81.6

(1) Financial aid for Accountancy graduate student (5th year) started

(2) Counted as Self-Support prior to 2002-03

**TABLE 15 (CONT). SOURCES OF FINANCIAL AID
1998-1999 TO 2004-2005**

BIOMEDICAL SCIENCES PROGRAMS

<u>Year</u>	<u>98-99</u>	<u>99-00</u>	<u>00-01</u>	<u>01-02</u>	<u>02-03</u>	<u>03-04</u>	<u>04-05</u>
<u>Graduate School Support</u>							
Grad Fellowships	56	60	67	68	66	69	72
VT							1
Dean's Fellowships	0	0	0	0	2	2	1
Scholarships/FT					4	10	10
<u>Other Departmental Sources</u>							
Institutional	0	1	1	11	7	16	19
Clinical						5	6
Total	56	61	68	79	79	102	109
<u>External support</u>							
Research Grants	35	42	43	43	65	87	73
VT						13	8
Training Grants	39	42	40	47	45	37	44
VT							13
NRSA/NSF/HH/US							
Army/Packard/AHA/PG/							
Homeland Security	10	10	12	10	11	13	12
Total	84	94	95	100	121	132	150
Total with support	140	155	163	179	200	234	259
% Students with external support	60.0	60.6	58.3	56	61	56	58
Self-Support/unclass	30	16/12	17/7	20/9	17/22	7/22*	5/21*
VT							3
TOTALS	170	183	187	208	239	263	288
% Students receiving some financial aid	82.3	84.7	87.2	86	84	89	90

**Unclassified includes 12 PREP Scholars, 3 MDs, and 6 Other

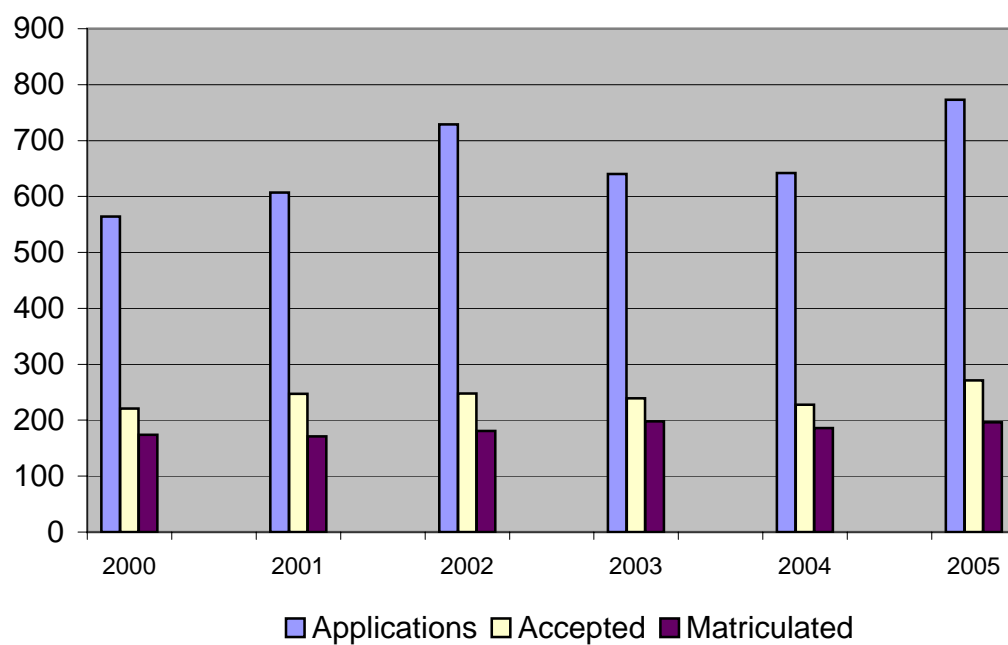
ADDENDUM

Selected Tables with information in graphical format.

**TABLE 2. APPLICATION STATISTICS
2000-2005**

REYNOLDA CAMPUS PROGRAMS

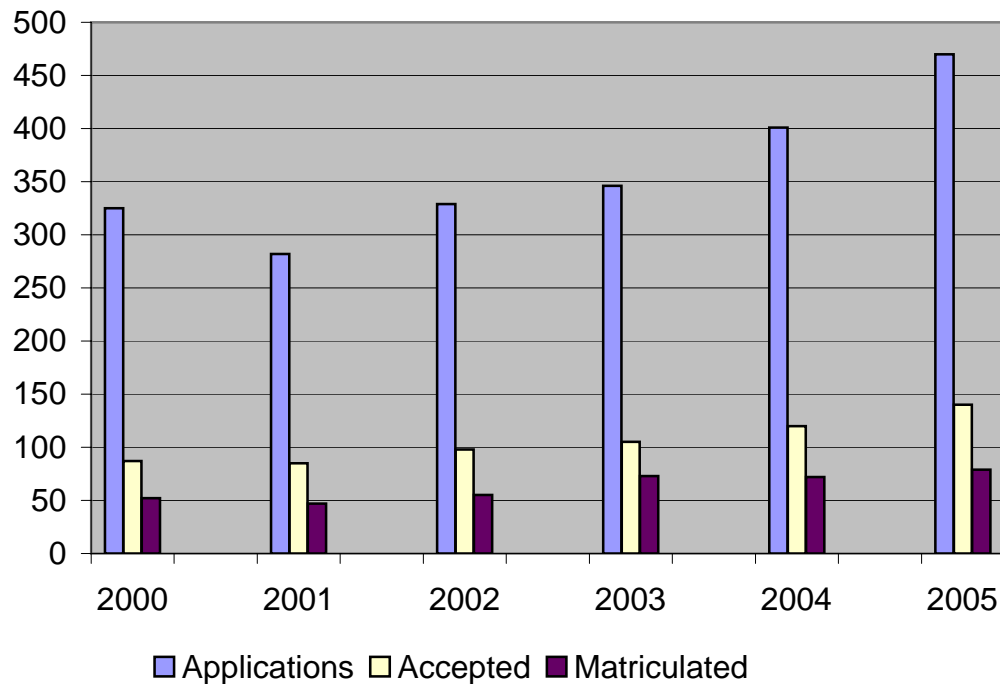
Year	Applications	Accepted	Matriculated
2000	564	221	174
2001	607	247	171
2002	729	248	181
2003	640	239	198
2004	642	228	186
2005	773	271	196



**TABLE 2 (CONT). APPLICATION STATISTICS
2000-2005**

BIOMEDICAL SCIENCES PROGRAMS

Year	Applications	Accepted	Matriculated
2000	325	87	52
2001	282	85	47
2002	329	98	55
2003	346	105	73
2004	401	120	72
2005	470	140	79



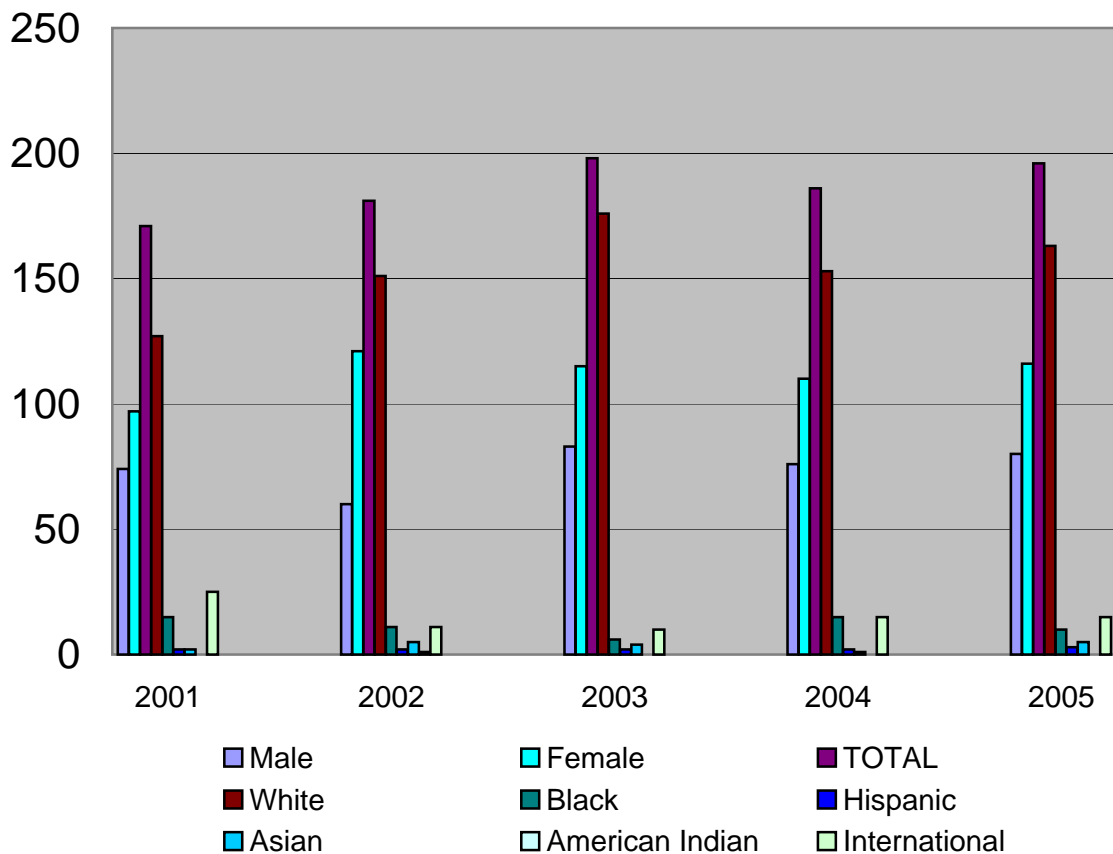
**TABLE 3. STUDENT PROFILE, MATRICULANTS
FALL 2001 TO FALL 2005**

REYNOLDA CAMPUS PROGRAMS

Year	Male	Female	TOTAL	White	Black	Hispanic	Asian*	American Indian	International#
2001	74	97	171	127	15	2	2	0	25
2002	60	121	181	151	11	2	5	1	11
2003	83	115	198	176	6	2	4	0	10
2004	76	110	186	153	15	2	1	0	15
2005	80	116	196	163	10	3	5	0	15

*U.S. Address, Asian Ethnicity

#Non-U.S. Address, Ethnicity not checked



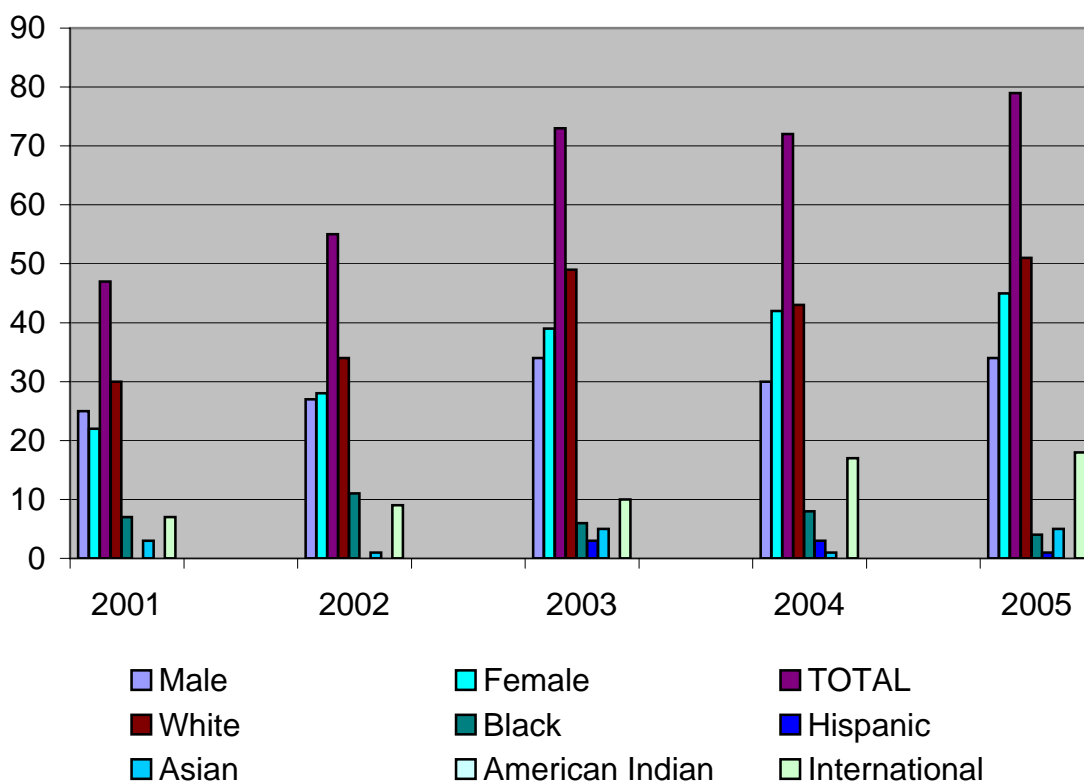
**TABLE 3 (CONT). STUDENT PROFILE, MATRICULANTS
FALL 2001 TO FALL 2005**

BIOMEDICAL SCIENCES PROGRAMS

Year	Male	Female	TOTAL	White	Black	Hispanic	Asian*	American Indian	International#
2001	25	22	47	30	7	0	3	0	7
2002	27	28	55	34	11	0	1	0	9
2003	34	39	73	49	6	3	5	0	10
2004	30	42	72	43	8	3	1	0	17
2005	34	45	79	51	4	1	5	0	18

*U.S. Address, Asian Ethnicity

#Non-U.S. Address, Ethnicity not checked



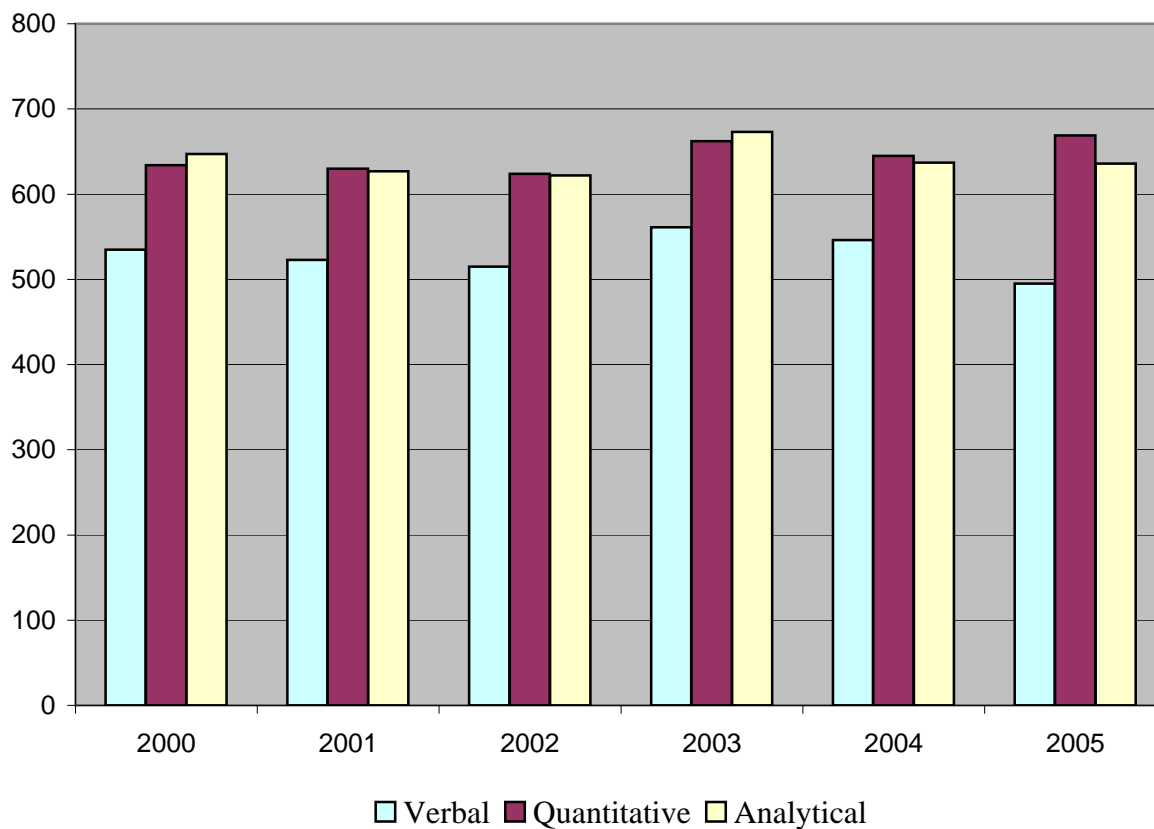
**TABLE 7. STANDARDIZED TEST SCORES FOR MATRICULATED STUDENTS
GRADUATE RECORD EXAMINATION (GRE) SCORES**

REYNOLDA CAMPUS PROGRAMS

Year (Fall)	Verbal	Quantitative	Analytical
2000	535	634	647
2001	523	630	627
2002	515	624	622
2003	561	662	673
2004	546	645	637
2005	495	669	636

National mean all takers:

2000-2003	470	598	4.2
-----------	-----	-----	-----



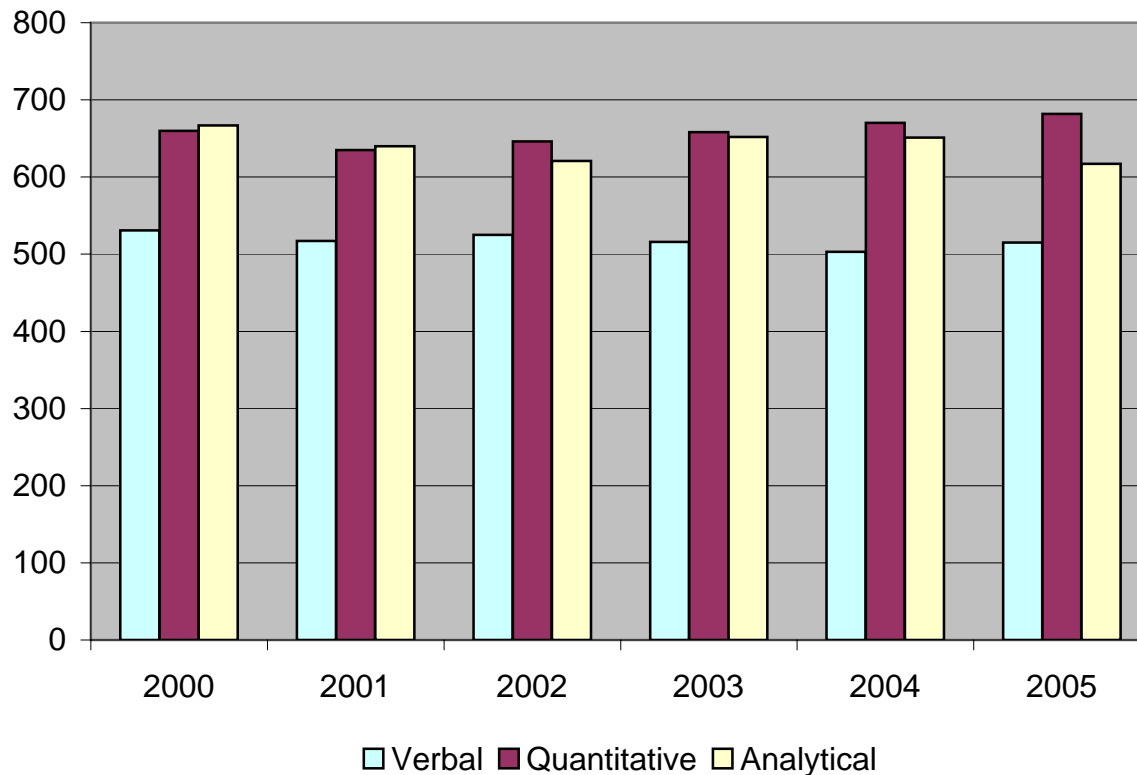
**TABLE 7 (CONT). STANDARDIZED TEST SCORES FOR
MATRICULATED STUDENTS
GRADUATE RECORD EXAMINATION (GRE) SCORES**

BIOMEDICAL SCIENCES PROGRAMS

Year (Fall)	Verbal	Quantitative	Analytical
2000	531	660	667
2001	517	635	640
2002	525	646	621
2003	516	658	652
2004	503	670	651
2005	515	682	617

National mean all takers:

2000-2003	470	598	4.2
-----------	-----	-----	-----



**TABLE 7 (CONT). STANDARDIZED TEST SCORES FOR MATRICULATED STUDENTS
GRADUATE MANAGEMENT ADMISSIONS TEST (GMAT) SCORES**

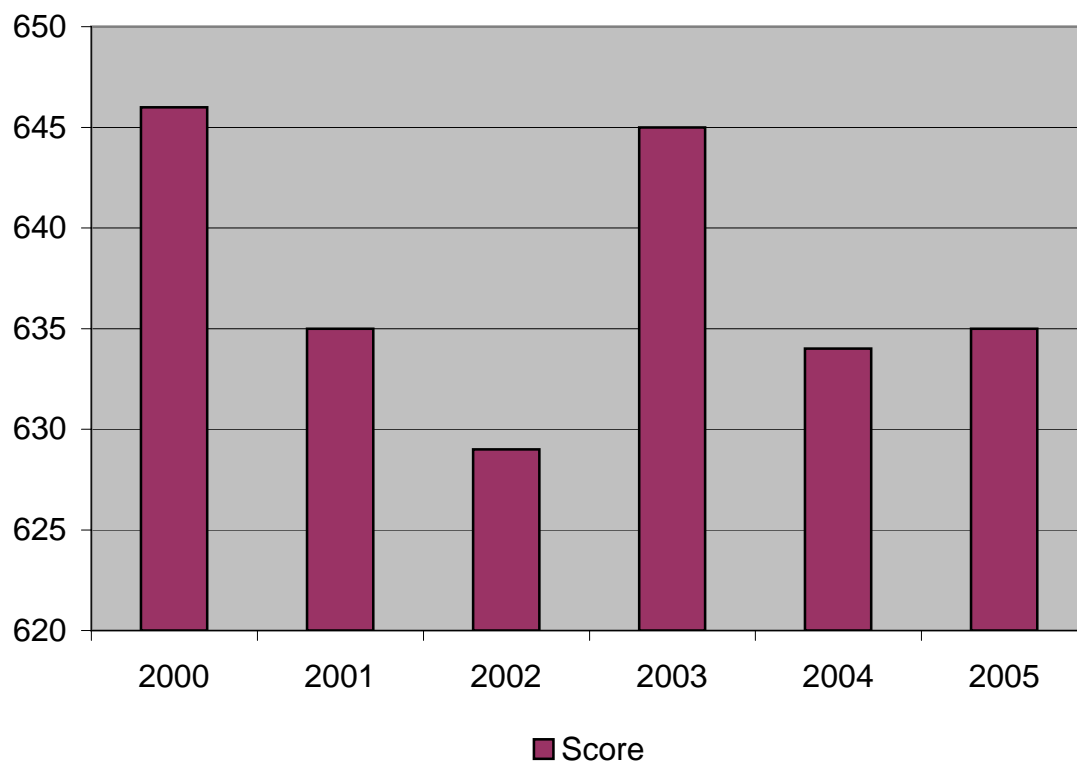
ACCOUNTANCY PROGRAM

Year (Fall)	Score	(%)*
2000	646	(84%)
2001	635	(81%)
2002	629	(80%)
2003	645	(81%)
2004	634	(79%)
2005	635	(80%)

National Mean (50%), all takers:

2000-2002 528

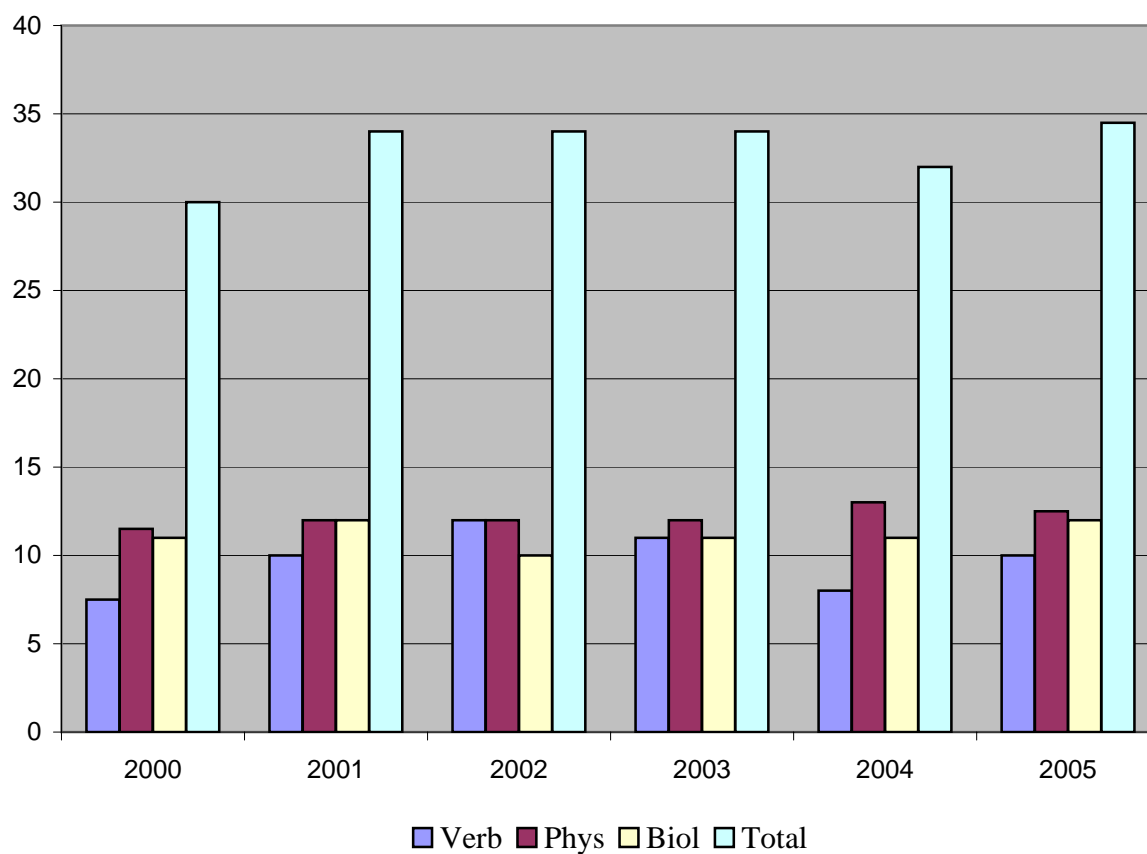
*Percent of examinees scoring lower than stated score



**TABLE 7 (CONT). STANDARDIZED TEST SCORES FOR MATRICULATED STUDENTS
MEDICAL COLLEGE ADMISSIONS TEST (MCAT) SCORES**

MD/PhD PROGRAM

Year (Fall)	Verb	Phys	Biol	Total
2000	7.5	11.5	11	30
2001	10	12	12	34
2002	12	12	10	34
2003	11	12	11	34
2004	8	13	11	32
2005	10	12.5	12	34.5

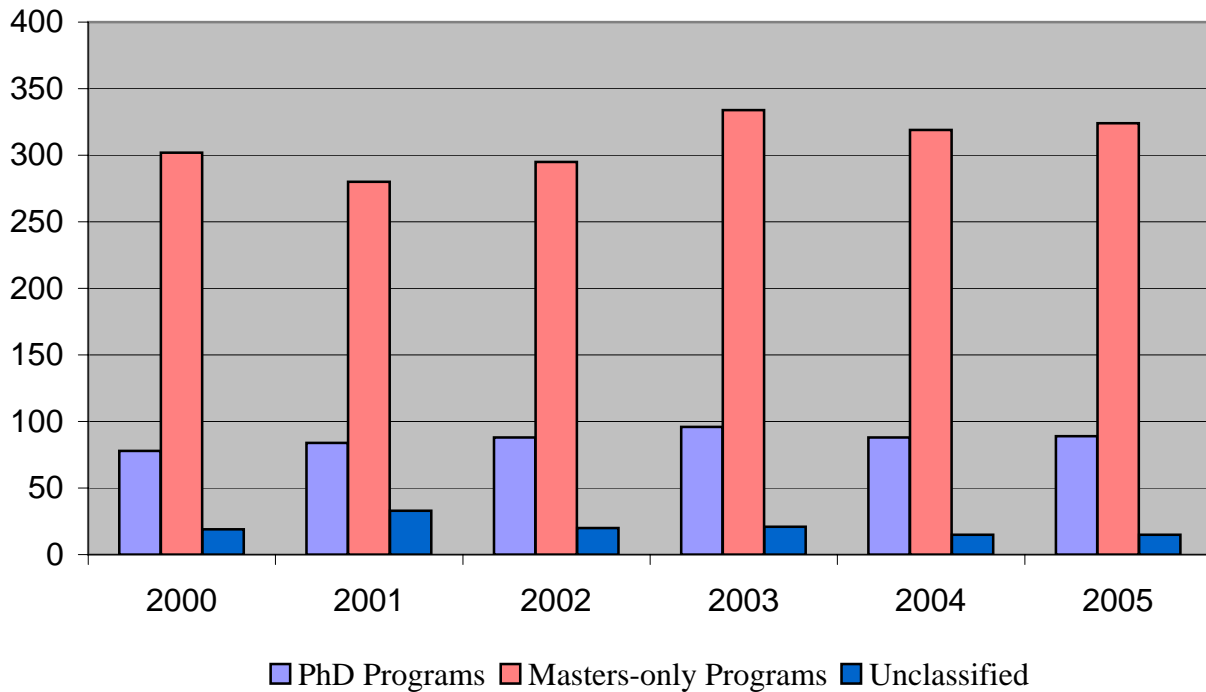


**TABLE 8. STUDENT ENROLLMENT
FALL 2000 TO FALL 2005**

REYNOLDA CAMPUS PROGRAMS

	2000	2001	2002	2003	2004	2005
PhD Programs	78	84	88	96	88	89
Masters-only Programs*	302	280	295	334	319	324
Unclassified	19	33	20	21	15	15
TOTAL	399	397	403	451	422	428

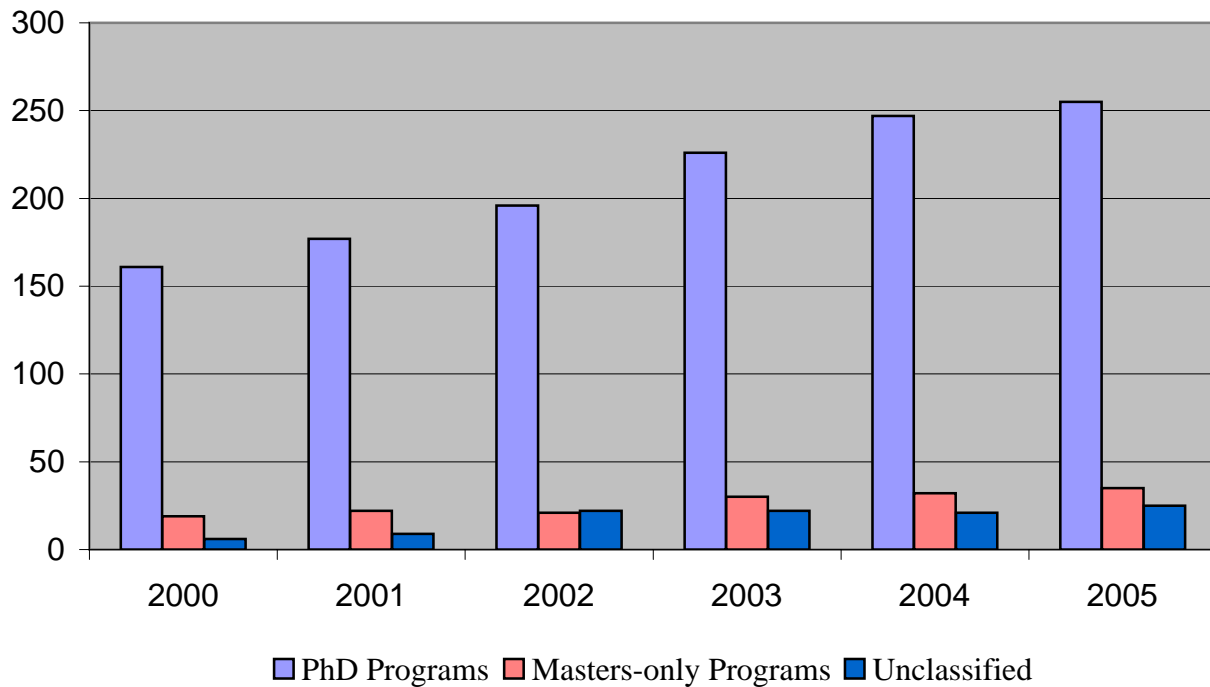
*Masters-only Programs do not
include 4th year Accountancy students



**TABLE 8 (CONT). STUDENT ENROLLMENT
FALL 2000 TO FALL 2005**

BIOMEDICAL SCIENCES PROGRAMS

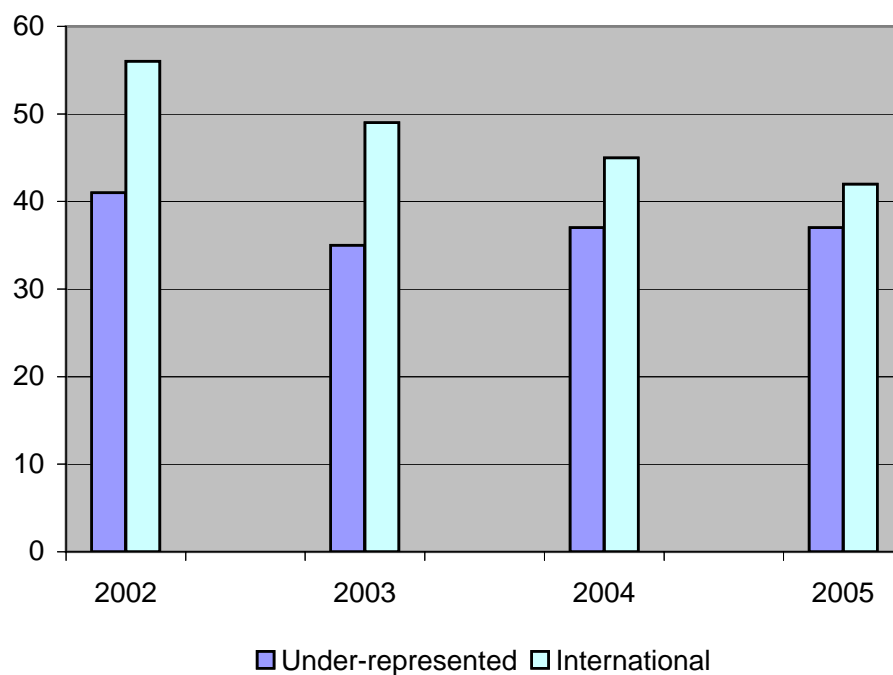
	2000	2001	2002	2003	2004	2005
PhD Programs	161	177	196	226	247	255
Masters Programs	19	22	21	30	32	35
Unclassified	6	9	22	22	21	25
TOTAL	186	208	239	278	300	315
TOTAL (ALL PROGRAMS)	585	605	642	729	722	743



**TABLE 9. STUDENT PROFILE, TOTAL ENROLLMENT, DEGREE-SEEKING STUDENTS
FALL 2002 TO FALL 2005**

REYNOLDA CAMPUS PROGRAMS

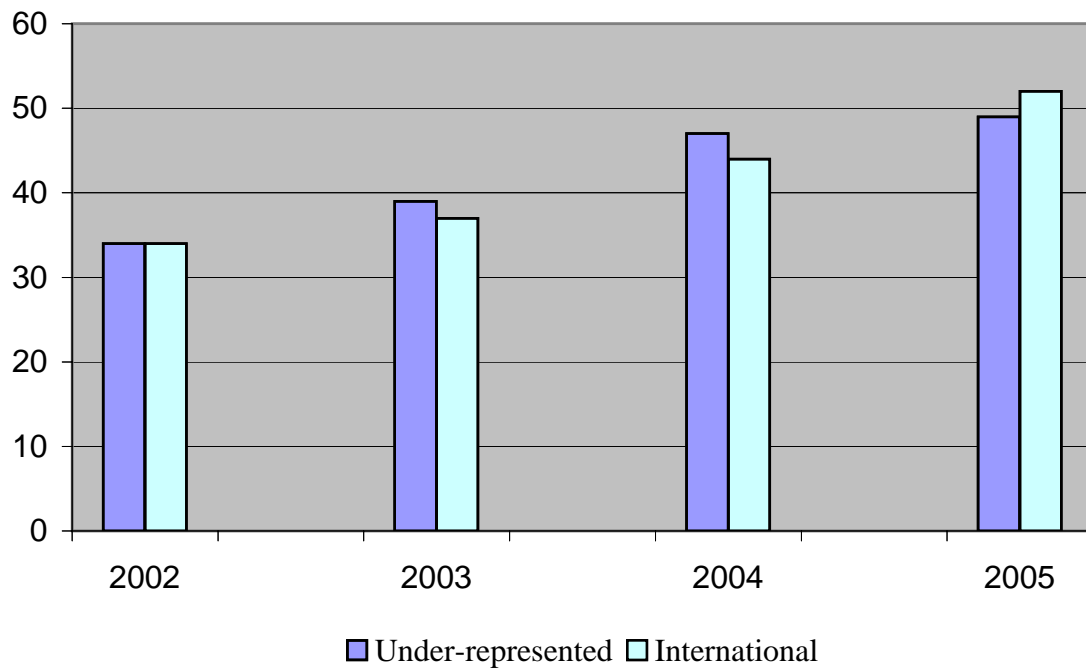
	Under-represented	International
2002	41	56
2003	35	49
2004	37	45
2005	37	42



**TABLE 9 (CONT). STUDENT PROFILE, TOTAL ENROLLMENT,
DEGREE-SEEKING STUDENTS
FALL 2002 TO FALL 2005**

BIOMEDICAL SCIENCES PROGRAMS

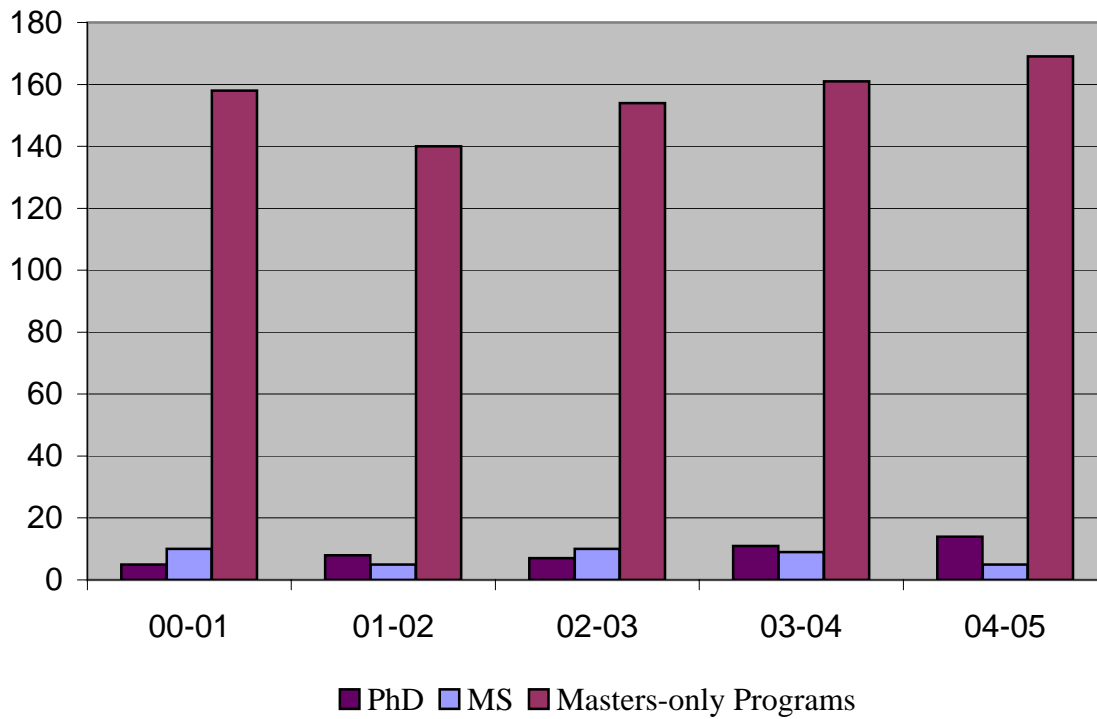
	Under-represented	International
2002	34	34
2003	39	37
2004	47	44
2005	49	52



**TABLE 11. DEGREES AWARDED
2000-2001 TO 2004-2005**

REYNOLDA CAMPUS PROGRAMS

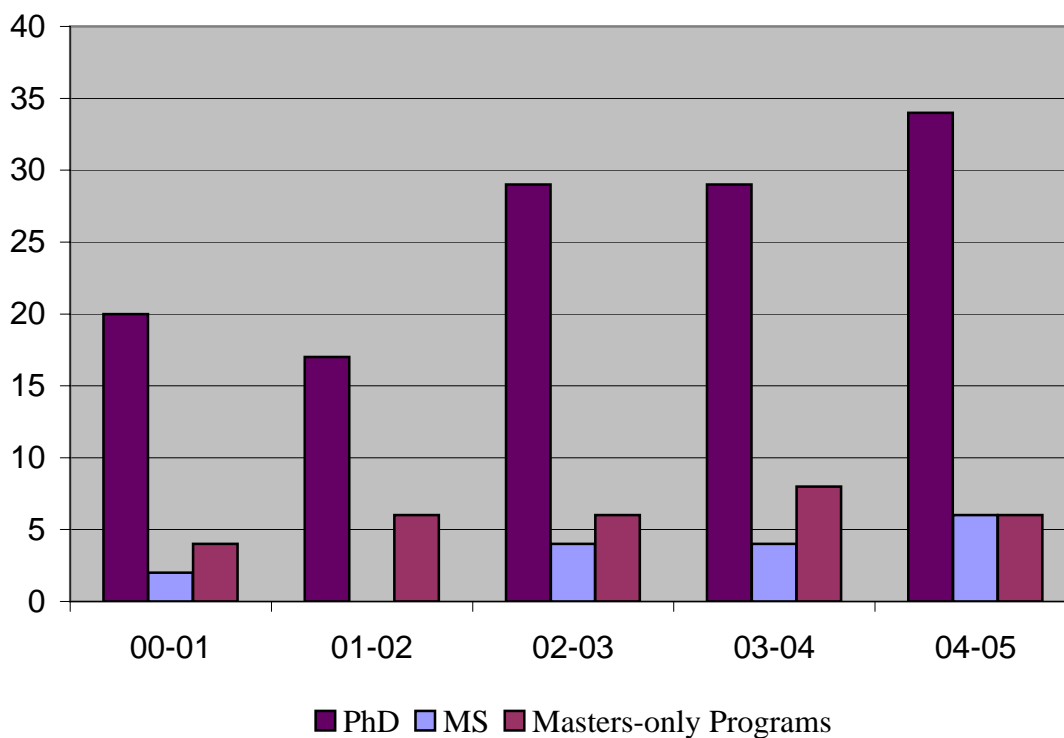
	00-01	01-02	02-03	03-04	04-05
PhD	5	8	7	11	14
MS	10	5	10	9	5
Masters-only Programs	158	140	154	161	169
TOTAL	173	153	171	181	188



**TABLE 11 (CONT). DEGREES AWARDED
2000-2001 TO 2004-2005**

BIOMEDICAL SCIENCES PROGRAMS

	00-01	01-02	02-03	03-04	04-05
PhD	20	17	29	29	34
MS	2	0	4	4	6
Masters-only Programs	4	6	6	8	6
TOTAL	26	23	39	41	46



**TABLE 11 (CONT). DEGREES AWARDED
2000-2001 TO 2004-2005**

ALL PROGRAMS

	00-01	01-02	02-03	03-04	04-05
PhD	25	25	36	40	48
MS	12	5	14	13	11
Masters-only Programs	162	146	160	169	175
TOTAL	199	176	210	222	234

