



GRADUATE SCHOOL *of* ARTS AND SCIENCES

ANNUAL REPORT 2003-2004



WAKE FOREST
UNIVERSITY

GRADUATE SCHOOL *of*
ARTS AND SCIENCES

WAKE FOREST

UNIVERSITY

GRADUATE SCHOOL *of*
ARTS AND SCIENCES

Annual Report 2003 - 2004

TABLE OF CONTENTS

	Page
MISSION STATEMENT	3
THE 2003-2004 YEAR IN REVIEW	4
PROJECTIONS FOR THE 2004-2005 YEAR.....	23
APPENDIX.....	25
Administration, Graduate School of Arts and Sciences.....	25
Standing Committees of the Graduate School	25
Graduate Faculty Representatives.....	28
Tables.....	30
1. Graduate Programs at Wake Forest University, 2003-2004	30
2. Application Statistics, 1992-2004.....	31
3. Student Profile, Fall 2002-Fall 2004.....	32
Applicants, Accepted and Matriculants	
4. Student Profile, Demographics, Fall 2002-Fall 2004	33
Applicants and Matriculants	
5. US Citizen/Non-Citizen Applications.....	35
Applicants and Matriculants	
6. Standardized Scores and Grade Point Averages (GPA), Fall 2002-Fall 2004, Applicants, Accepted and Matriculants	36
7. Standardized Test Scores for Matriculated Students	37
8. Student Enrollment, Fall 1997-Fall 2004.....	39
9. Student Profile, Total Enrollment, Degree-Seeking Students, Fall 2003, Fall 2004	41
10. International Student Profile, Fall 2003, 2004.....	42
11. Degrees Awarded, 1997-1998 to 2003-2004	44
12. Time to PhD Degree, 1999-2000 to 2003-2004.....	46
13. Placement, 2003-2004.....	47
14. Financial Aid, 1997-1998 to 2003-2004.....	54
15. Sources of Financial Aid, 1997-1998 to 2003-2004	55
Addendum.....	57
1. Application Statistics, 2000-2004	58
2. Student Profile, Fall 2001-Fall 2004, Matriculants	60
3. Standardized Test Scores for Matriculated Students	62
4. Student Enrollment, Fall 2000-Fall 2004.....	66
5. Student Profile, Total Enrollment, Degree-Seeking Students, Fall 2003-Fall 2004.....	68
6. Degrees Awarded, 2000-2001 to 2003-2004	70

MISSION STATEMENT

“The Graduate School, operating within the framework of these principles (of Wake Forest University), seeks to provide a community of faculty and advanced students dedicated to teaching, research and productive scholarship. Through graduate programs in the arts and sciences and the basic medical sciences, an effort is made to expand the frontiers of knowledge and to keep abreast of man’s understanding of the rapidly changing human environment. As a significant feature of the educational process, students are encouraged to develop initiative, resourcefulness and responsibility required of those who become independent intellectual leaders in their chosen fields of endeavor.”

From the Statement of Purpose, Bulletin of Wake Forest University Graduate School of Arts and Sciences, 2003-2004, page 20.

THE 2003-2004 YEAR IN REVIEW

Administration

This year saw no changes in the administrative staff of the Graduate School of Arts and Sciences (see Appendix for a listing of personnel.) In addition to the staff, the Graduate School administration was assisted by many faculty members, staff of other administrative offices and students, including several undergraduates who worked on a part-time basis in the Reynolda campus office with staff members. Faculty and students served on standing committees of the Graduate School and represented the School on University committees. A large number of faculty members served on students' master's and doctoral thesis and dissertation committees; many of these faculty were involved in student committees on "the other" campus. The service provided by all the above individuals is essential for the conduct of the graduate programs in arts and sciences and biomedical sciences at Wake Forest University; the faculty are all appreciated and thanked for their service. Also, the senior leadership of the University continued to support the Graduate School both financially and through their encouragement.

To all those who assisted this year, and each year, in promoting excellence in graduate education at Wake Forest University, a sincere thank you!

Active graduate programs in the Graduate School of Arts and Sciences for 2003-2004 are listed in the Appendix, Table 1. No new programs were added or deleted this year. The Department of Counseling (established on July 1, 2003) admitted its first students to the MA program in Counseling in the fall of 2003. This program replaced the MAEd program in Counseling previously offered through the Department of Education.

Graduate School and University Committees

The **Graduate Council** met monthly during the academic year except for December and also January when the regularly scheduled meeting was cancelled due to bad weather. The Credentials, Curriculum and Policy Committees of the Council (compositions listed in the Appendix) reviewed nominations to the graduate faculty, courses changes, additions and deletions and policy issues respectively. The Credentials Committee also served as the Nominations Committee, proposing faculty as candidates for election to the Council and for Graduate School representation on the University Senate for 2004-2005. The election was held in April 2004. The Policy Committee spent considerable time in the development of an Honor Code and procedures for its implementation. Several drafts of the proposed code were discussed by the Council during the year. The revised April 2004 version was presented at the Spring Graduate Faculty meeting for discussion. The Council also discussed plans for the Hooding and Awards ceremony, the Graduate School Forum and the Graduate Student Research Day.

A proposal to change the Master of Science in Accountancy (MSA) program from a 3/2 model to a 4/1 model was presented to the Council at the April meeting by Dr. Terry Baker, Graduate Program Director for the MSA program. The proposal, which had been approved by the faculty of the Wayne Calloway School of Business and Accountancy, was approved by the Council. It will be phased in during the next few years and be fully implemented in the 2008-2009 academic year. The proposal and associated course

changes will be presented to the Graduate Faculty in the 2004-2005 year. A proposal to combine the physiology and pharmacology graduate programs was presented to the Council by Dr. Mike Nader, graduate program director for the department, for information. There were no objections to the proposal, which was forwarded to the Graduate Faculty for discussion.

The **Graduate Faculty** held fall and spring meetings, on November 24, 2003 and April 26, 2004 respectively, in Winston Hall on the Reynolda campus. Reports on the activities of the Graduate Council were given by the Secretary to the Council and Faculty, Dr. Robinson (Mathematics). Reports on the activities of the University Senate were given by Graduate School representatives Dr. Mary Sorci-Thomas (Pathology/Comparative Medicine) at the fall meeting and by Dr. Dale Dagenbach (Psychology) at the spring meeting. Course changes approved by the Council were approved by the faculty and several new Graduate Faculty members were announced at each meeting. At the fall meeting, Dean Melson gave a presentation entitled "The Graduate School 2003-2004: Challenges and Opportunities." The PowerPoint presentation is available on the Graduate School web site: www.wfu.edu/graduate. In summary, the report concluded that the graduate programs are strong, with financial support and recruitment being two closely related challenges to be faced during the year. Several opportunities for student recruitment and new program development will be available through established and new partnerships.

At the spring meeting, the draft Honor Code developed by the Graduate Council was presented for comment and discussion by Dr. Alexander-Miller (Microbiology and Immunology), chair of the Policy Committee of the Graduate Council. A lively discussion took place, with several suggestions for change/improvement being presented. The Graduate Council will consider the input from the Graduate Faculty as it develops a revised version of the Code during the 2004-2005 year. The results of the election for Graduate Council and Graduate School representative to the University Senate were announced. Drs. Alexander-Miller, Will Fleeson (Psychology), and Stephen Robinson (Mathematics) were elected for second terms on the Council (2004-2007); Dr. Mark Payne (Pediatrics) was also elected for the same term. Dr. Suzy Torti (Biochemistry) was elected to the Senate for 2004-2008. Dr. Mike Nader presented the proposal for the combination of the Physiology and Pharmacology graduate programs. There were no objections to the proposal from the faculty.

There were 490 members of the Graduate Faculty at the beginning of the 2003-2004 year. This number compares with 454 faculty members at the start of the 2002-2003 year.

The **Biomedical Sciences Graduate Committee** met four times throughout the year, in September, January, April and June. Among the topics discussed were course scheduling, recruiting, Career Day, PhD Interview weekend, enrollment and content for two "core courses", Proteins and Enzymes (P&E) and Molecular Biology (MB), and the review and revision of the Ethics in Science and Introduction to Professional Development courses. At the September meeting, Dr. Mark Lively (Biochemistry and Molecular Genetics) agreed to review the P&E course and Dr. Larry Daniel the MB course. Reports on the discussions concerning these courses were presented at the January meeting; however, the new Chair of the Department of Biochemistry, Dr. Douglas Lyles, is coordinating a review of all courses offered by the department which will continue into the 2004-2005 year. Some changes in the content of these courses that

were suggested in the reviews will be implemented when offered in the coming year. At the January meeting Dean Melson requested a review of the Ethics in Science (EIS) and Introduction to Professional Development (ITPD) courses. Dr. Nancy Jones (Pathology) agreed to coordinate a review of the EIS course and Dr. Dwayne Godwin (Neurobiology and Anatomy) agreed to coordinate a review of the ITPD course. Since there is a close relationship between these courses, Dr. Solano (Associate Dean) was asked to work with, and coordinate the discussions of, the two groups. Reports on these two courses were presented at the April and June meetings, with draft curricula being discussed. The topics to be presented in these two courses will be integrated during the 2004-2005 year within the same schedule as in previous years. The success of this approach will be evaluated at the end of the year.

A procedure for applicants to be considered by more than one BMS graduate program was presented and discussed at the June meeting. With the support of the program directors, the procedure will be implemented during the 2004-2005 year.

The Teaching Skills and Strategies Seminar, which is part of the Professional Development program, was not offered this year since the enrollment did not meet the instructor's requirement.

The **Task Force on Bioethics** continued to meet during the year, with the discussions focusing on the planned workshop and a possible master's degree program in bioethics. (The membership of the Task Force is listed in the Appendix; Dean Melson continued to chair the Task Force with Dr. Sally Shumaker.) On January 23, 2004, the Task Force sponsored a workshop entitled "Training Bioethicists for the Future." The workshop was largely funded by the WFU Fund for Ethics and Leadership (the Fund) through a grant for \$10,000 with additional support from the Graduate School of Arts and Sciences and the Office of Intercampus and Community Program Development. The workshop included seven invited consultants from among the leading national bioethics programs, almost twenty interested faculty members from both campuses of the University and the members of the Task Force. The "Report from the Workshop to Discuss a Master's Degree Program in Bioethics", was submitted to Dr. Richard H. Dean, President WFU Health Sciences; Dr. William B. Applegate, Senior Vice President and Dean, WFU School of Medicine and Dr. William C. Gordon, Provost, for their consideration. It was recommended in the report that WFU should have a master's degree program in bioethics. However, it should be preceded by the creation of a Bioethics Center and the School of Medicine should separately address its perceived weakness in clinical ethics. The Task Force also developed a "Proposal for a Bioethics Center at Wake Forest University" which has also been submitted to the administrators listed above. Dr. Melson visited Loyola Marymount University in California in October 2003 and met with Dr. James J. Walter, Austin and Ann O'Malley Professor of Bioethics and Director of The Bioethics Institute for discussions on the proposed master's degree program and Bioethics Center at WFU.

A proposal submitted by the Task Force to the **WFU Fund for Ethics and Leadership** entitled "A Visiting Scholars Program in Bioethics" was approved by the administrators of the Fund for \$10,000 for 2004-2005. This program will bring two nationally and internationally recognized bioethicists, with additional expertise in the creation and operation of centers for bioethics and graduate programs in bioethics, to be "in residence"

at the University for up to 5 days each, one in the fall 2004 semester, the other in the spring 2005 semester.

A series of meetings of the Education and Workforce Subcommittee of the Greater Winston-Salem Chamber of Commerce involved Dr. Michael Tytell (Neurobiology and Anatomy). The sub-committee discussed how internship opportunities for students in the Winston-Salem area with area businesses may be better publicized. Following these meetings, and discussions involving Dr. Tytell, Gwyn Riddick, Director of the NCBC office in Winston-Salem and Dean Melson, the **WFU Graduate Internship Committee** was established by Dean Melson, with Dr. Tytell as chair. The composition of the committee is listed in the Appendix. The committee met several times during the year, developed an internship agreement document and discussed how internship opportunities for graduate students from both campuses may be better identified and publicized. The committee will continue its discussions in the coming year.

The **Board of Visitors of the College and Graduate School of Arts and Sciences** (BOV) held fall (September 25-26, 2003 and spring (February 19-20, 2004) meetings on the Reynolda campus. The members of the Graduate School Advisory Committee (GSAC) of the Board are listed in the Appendix. The fall meeting continued the Student Life theme from the previous (spring 2003) meeting and focused on Community Building and Social Life Outside of the Classroom. The fall meeting considered a new topic, "The Future of Research at Wake Forest University." Dean Melson participated in introducing the meeting topic with Provost Gordon, Vice President Sandra Boyette and Associate Provost for Research Mark Welker. He also moderated a faculty panel of Drs. David Carroll (Physics), Margaret Bender (Anthropology), George Graham (Philosophy) and Mark Leary (Psychology) who discussed their research and how students at WFU are involved in research. The GSAC considered three questions dealing with publicizing research, employers' perception of student research participation, the value of research internships and solicited ideas for encouraging and rewarding undergraduate student involvement in research. The meeting included lively presentations from both students and faculty and thoughtful discussions involving the BOV members. The discussion of the future of research at WFU will continue at the fall 2004 BOV meeting. The participation of the members of the Board of Visitors and the advice that they provide is deeply appreciated by the administration of the Graduate School and the University.

Graduate School and Graduate Program Events

The fifth annual **Hooding and Awards Ceremony for the Graduate School of Arts and Sciences** for the class of 2003-2004 was held on Saturday, May 15, 2004 in Wait Chapel on the Reynolda campus. The event was moved to Wait Chapel this year from Brendle Recital Hall, where it had been held since its inception in 2000, so that a larger number of guests could be accommodated. Each graduate from 2003-2004 could bring as many guests to the ceremony as he/she desired this year. Also, the event was not restricted by time as in previous years by the College Awards Ceremony before or the School of Medicine Hooding Ceremony after the Graduate School ceremony. The faculty marshals, Drs. Leah McCoy (Education) and Brian Tague (Biology) were selected from the Graduate Council membership; student marshals, Catherine Au (Physiology and Pharmacology), Meghna Baliga (Biology), Amy Hicks (Biochemistry), Craig Moretz (Biology), Abelinhe Ramos (Computer Science) and Susan Walker (Chemistry) were selected by the Graduate Student Association.

The distinguished invited speaker was Dr. Reed Humphrey ('76 M.A., Physical Education), Associate Professor, Department of Physical and Occupational Therapy, Idaho State University. His presentation "Of Kismet, Chaos and Ocracoke" was warmly received by the audience of graduates, family, friends and faculty of more than 1000 persons. Dr. Humphrey was introduced by Dr. Paul Ribisl (Chair, Health and Exercise Science). As in previous ceremonies, Ph.D. graduates were hooded by their advisors and Master of Science in Accountancy graduates by Dr. Jack Wilkerson, Dean of the Wayne Calloway School of Business and Accountancy. This year, the M.A. graduates were hooded by Dr. Ellen Kirkman (Mathematics), the M.S. graduates by Dr. Stephen Messier (Health and Exercise Science), the M.A.Ed graduates by Dr. Joseph Milner, Chair, Education) and M.A.L.S. graduates by Dr. Ulrike Wiethaus (Humanities).

The Outstanding Doctoral Student Award was presented to Xiuli Xu (Physics), advisor Dr. Dany Kim-Shapiro. The Outstanding Master's Student Award was presented to Emily Kader (English), advisor Dr. Jefferson Holdridge. The Graduate Student Association Faculty Excellence Award was presented to Dr. Sara Jones (Physiology and Pharmacology). Graduating students who received major awards during their tenure at WFU were also recognized. Dr. Charles Kimball (Chair, Religion) gave the invocation and benediction and Ms. Faye Reece played the organ for the processional and recession. A reception was held in the Green Room of Reynolda Hall following the ceremony. Overall, the ceremony was a great success that was enjoyed by all in attendance and even included an accepted marriage proposal between the GSA co-Presidents!

At the **WFU Commencement Ceremony** on May 17, 2004, two hundred and twenty-one graduates of the 2003-2004 year were recognized (the highest number in one year). This number included forty who received their Ph.D. degree, a record number of doctoral degrees awarded by Wake Forest University in one year. Two Ph.D. degrees were awarded to students in the combined MD/PhD degree program and four were awarded to students from the joint PhD/MBA program.

The seventh annual **Graduate School Forum** "Issues in Graduate Education: Where am I and where do I go from here?" was held from 11:30 am to 1:30 pm, January 30, 2004 on the Reynolda campus. The Forum had its highest number of attendees, 115 graduate students and 23 facilitators. The graduate students came from both campuses and represented almost every graduate program at the University. The facilitators came from several graduate programs on both campuses, from administrative offices, the WFU School of Law, the Babcock Graduate School of Management, local companies and from government agencies. Graduate students were asked to select topics and were then assigned to two sessions based on their choices. In the first session over lunch, the students sat with a facilitator and discussed one topic of interest. In the second session, students moved to a second table to discuss a new topic with a different facilitator. The topics were: Getting a Job; Getting a Postdoctoral Position; Getting a Second Degree; Getting the Most from Graduate School; Juggling Family and Career; Managing Time and Tasks; Negotiating Skills: Getting What you Want; What to do after a Master's degree; Working in Academia; Working as a Consultant; Working in Government; Working in Industry and Working for Yourself. The student reaction to this format for the Forum was very positive. Thanks go to all the facilitators and to those Graduate Council members who helped in arranging the Forum, viz., members of the GSA,

Associate Dean Solano, and Drs. Mark Miller (Cancer Biology), Pat Nixon (Health and Exercise Science) and Will Fleeson (Psychology).

The fourth annual **Graduate Student Research Day** was held in the Benson Student Center on the Reynolda campus on March 26, 2004. Seventy-seven poster presentations, involving eighty-seven students and seventeen graduate programs from both campuses participated in the Day. The number of students participating in Research Day continues to increase each year. Also, attendance was excellent, with many faculty and students from both campuses participating in discussions of the posters. Each presenter received a specially designed T-shirt. This year for the first time, sponsors of the event help defray costs. Thanks go to Targacept Inc. and the WFU Women's Health Center of Excellence for their contributions which assisted with the cost of the T-shirts and refreshments. Also this year for the first time, the student winners of oral presentations in chemistry, physics, mathematics and life sciences at the Louisiana Louis Stokes Alliance for Minority Participation (LS-LSAMP) Research Day and Ms. Candace Davis, Director of Outreach Operations for LS-LAMP, attended the WFU Research Day as guests of the Graduate School. A pizza party sponsored by the Graduate Student Association and the Graduate School followed the event. Research Day is an event that allows the Graduate School to recognize the excellent contributions to research at WFU that are made by graduate students and it is pleasing to see this event grow in numbers and quality each year.

The ninth annual **Department of Education Research Forum** was held on December 10, 2003. Graduate students presented their research through posters, short presentations and focused discussions at the afternoon event.

The third **Student Research Symposium of the Virginia Tech – Wake Forest University School of Biomedical Engineering and Sciences** was held on the Bowman Gray campus of WFU on April 24, 2004. Oral and poster presentations by students from both Virginia Tech and Wake Forest were given as part of the program.

The tenth annual **Summer Research Opportunities Program (SROP)** sponsored and funded by the Graduate School was held on the Bowman Gray campus in connection with the NIH-supported **Excellence in Cardiovascular Sciences (EICS)** summer research program from June 2 through July 30, 2004. As in previous years, students from both programs were housed together in University-owned houses on the Reynolda campus. A total of twenty-seven undergraduates from many different schools participated in the programs. Two students from Tennessee State University (EICS), one student from LS-LAMP (EICS) and one from North Carolina Central University (SROP) participated (see Partnerships.) Thanks are expressed to Dr. Debra Diz, (Hypertension and Vascular Disease Center), director of the EICS program, and to Dr. Fred Perrino (Biochemistry) for running the Journal Club for SROP. A research poster session, followed by lunch and the presentation of certificates of participation was held on the final day of the programs. The symposium was well attended by faculty and students from WFU together with family and friends of the programs' participants. The summer research programs provide the participants with exposure to the research projects and faculty at the Medical Center and also serve as a source of potential students for the biomedical sciences graduate programs.

A **Career Day Research Poster Session** was included in the activities on October 3, 2003. Nineteen students in the Biomedical Sciences programs gave presentations, which

were well received by the visiting students and faculty. It is planned to repeat this session as part of the Career Day activities in future years.

A Research Symposium, presented by the **Post-Baccalaureate Research Education Program (PREP) Scholars** was held on June 25, 2004. In addition to the poster session, Dr. George A. Mensah, Chief, Cardiovascular Health Branch, Centers for Disease Control and Prevention, was the featured seminar speaker. The PREP program is very ably led by Dr. Debra Diz and is providing underrepresented minority students with opportunities for graduate-level studies in the biomedical sciences. Several of these students apply to WFU for graduate studies in the BMS programs; three students will matriculate in fall 2004.

This year, the Graduate School initiated the **“Wake Forest University Graduate School of Arts and Sciences Interdisciplinary Lecture Series”** to stimulate discussions of interdisciplinary research and graduate education opportunities. Two lectures were sponsored, the first with the departments of Physics, Chemistry, Biochemistry and the Consortium of Biological Chemistry and Physics on November 20, 2003 that brought Dr. Brian Matthews, Professor in the Department of Physics at the University of Oregon to Wake Forest. He spoke on “Tolerance and Intolerance in Protein Structure and Function” The second, held on May 28, 2004 and co-sponsored with the Center for Structural Biology and the Department of Biochemistry, involved Dr. Peter B. Moore, Eugene Higgins Professor in the Department of Chemistry at Yale University. Dr. Moore spoke on “Structure of the Large Ribosomal Subunit: Mutational Studies of the Peptide Exit Tunnel.” Both speakers met with faculty and students from both campuses on their visits. The Series will be continued next year, with an anticipation that the topics will continue to be broad in content and that there will be greater opportunities for graduate students to meet informally with the speakers.

The College and Graduate School sponsored the seventh annual **Hubert McNeill Poteat Lecture** on March 18, 2004 in Green Hall on the Reynolda campus. Dr. Earl Smith, Wake Forest Professor and Chair of the Department of Sociology, spoke on “The Modern World System: Academics and Athletics in the New Millenium” to a large and enthusiastic audience.

Student Associations

The **Graduate Student Association (GSA)** was very active during the year due to the excellent leadership of the GSA co-presidents, KerryAnn O’Connor (Physiology and Pharmacology) and Brian Grimberg (Biology). The co-presidents participated in meetings of the Graduate Council and as members of its policy committee providing the student perspective on many issues, particularly the proposed Honor Code. The GSA also assisted with the Forum and Research Day events. The annual spring 5K race was held on April 4 and again proved to be a great success; \$375 was raised and donated to the Ronald McDonald House. Mr. Grimberg represented the graduate students on the Reynolda campus Traffic Commission and gained several concessions for graduate students. A GSA representative was chosen for a permanent seat on the WFUSM yearbook committee. A proposal to include a graduate student representative on the Reynolda campus Committee on Information Technology (CIT) was approved by the Graduate Council and by the faculty of the College. A graduate student will be selected by the GSA to be a member of this committee starting in 2004-2005. The GSA selected

the winner of the Faculty Excellence Award and the hooders for the MA and MS degree recipients at the Hooding and Awards Ceremony. Racquel Collins (Cancer Biology) participated in a student panel at the Conference of Southern Graduate Schools (CSGS) Annual Meeting in Charlotte in February 2004. The co-presidents and three postdoctoral fellows participated in "Mentoring for Success: A Workshop for Future Faculty" held at North Carolina State University on April 23, 2004. GSA members also volunteered at two social events hosted by the city of Winston-Salem and hosted fall and spring picnics for all graduate students. A Halloween party was held in conjunction with the Medical Student Association.

The **Black Graduate Student Association (BGSA)** held its fifth Graduate and Professional School Forum on the Bowman Gray campus on September 27, 2003. The event was well organized by the BGSA President, Tiffany Fisher (Neuroscience), and a committee of students from both campuses. The theme of the Forum was "Opening the Door to Your Potential: More than Just Getting a Foot In." The Keynote Speaker was Dr. Charles Williams, Associate Vice Chancellor for Academic Programs at North Carolina A&T State University. Four workshops were held and a graduate student fair was attended by fifteen different schools or programs from across the state of North Carolina. Partial financial support of the Forum was obtained by the BGSA from the Fund for Ethics and Leadership. This event attracts potential underrepresented graduate and professional students to the University and is an important event in the WFU recruiting calendar.

The **MD/PhD Student Association** was formed this year, with Isabel Newton (Neurobiology and Anatomy) serving as its first President. The Association assisted with the MD/PhD student interviews by hosting the interviewees. This is an important support group for the students in this program and for Dr. David Bass (Pulmonary and Critical Care Medicine) who serves as Program Director. Isabel attended the MD/PhD student conference in Aspen, CO in April 2004 and received her PhD degree in May 2004.

Departmental Reviews

Reviews of the Departments of English and Physics took place this year. Both departments had excellent and constructive reports from the external reviewers and the internal committee. For the graduate program in the **Department of English**, it was concluded in the Memorandum of Understanding (MOU) that the current M.A. program is an asset for the department and the University and should continue to be supported. Opportunities for graduate students to study in selected areas of interest within the department should be better defined and publicized and the possibility of developing an interdisciplinary program in medieval studies should be investigated. Additional funds for the support of student travel to professional meetings, conferences or research facilities should be sought.

For the **Department of Physics**, it was agreed in the MOU that the graduate student financial aid must be increased to a level that is competitive with institutions with whom we compete for the best students. This aid must include a competitive stipend and health insurance paid for by the institution when needed. Additional external support for graduate students must be sought. The department needs more space to accommodate its growing research and graduate education programs.

Recruiting

Graduate School deans, staff and faculty were actively involved in recruiting this year. Emphasis was again placed on identifying applicants who are underrepresented minorities in their disciplines, mainly science and biomedical science programs.

Admissions Coordinator Carol Digiantomasso attended graduate and professional fairs at Virginia Tech, Lenoir-Rhyne College, Appalachian State University, Winston-Salem State University, UNC-Wilmington, East Carolina University, Wake Forest University and Elon University. Carol also attended the North Carolina State University (NCSU) OPT-ED Alliance Day with Chante Singleton and Dr. Steven Robinson (Mathematics) attended the NCSU Physical and Mathematical Sciences Career Fair. Associate Dean Solano represented WFU at the BGSA Forum in November and participated in a workshop entitled “Inside the Admissions Committee.” Dean Melson attended the Annual Biomedical Research Conference for Minority Students (ABRCMS) in San Diego, CA from October 15-18, 2003. He also attended the 2003 Graduate and Professional School Fair at Tennessee State University (TSU) as the WFU Coordinator for TSU’s Graduate Scholars Program in September and the Florida A&M University (FAMU) Graduate Feeder Scholars Program Planning Conference in October 2003. At FAMU, Dr. Melson participated in the Graduate Opportunities Seminar/Workshop, giving a presentation entitled “Why Graduate School?”

Dr. Melson attended and served as a judge of chemistry poster presentations at the Florida-Georgia Louis Stokes Alliance for Minority Participation (FGLSAMP) Career Expo in Miami in January 2004. He also attended the North Carolina Louis Stokes Alliance for Minority Participation (NC-LSAMP) Undergraduate Research Conference held at the University of North Carolina at Charlotte in March 2004. At both of these meetings, Dr. Melson met with students and faculty from participating institutions. At the North Carolina meeting, Dr. Melson met with Dr. James A. Hicks, Senior Program Director, LSAMP program at the National Science Foundation, to discuss the submission of a LSAMP proposal from institutions in North Carolina (including WFU.) Dr. Ann Tallant (Hypertension and Vascular Disease Center) represented WFU at the LS-LAMP Student Research Conference in New Orleans on November 21-23, 2003. Four winners of oral presentations from the conference were awarded trips to WFU for the Graduate Student Research Day in March 2004.

The **Biomedical Sciences Career Day** was held on October 3, 2003. More than fifty students and faculty from twenty-six institutions attended. Four students and the Director of the Graduate Scholars Program at TSU attended. A Research Poster Session was held this year for the first time as part of the activities; nineteen BMS graduate students participated. Nine applications were received from Career Day attendees. Of these nine applicants, six will be matriculants in the fall, while three were not offered admission. Of the six matriculants, three are from the PREP program. Career Day continues to be an effective means of introducing the BMS graduate programs to a wide range of interested students and faculty. Three applications resulted from students who attended the **SROP** program in 2003. Two offers of admission were made, the other applicant was denied admission; however, both offers of admission were declined .

The **Biomedical Sciences PhD Interview Weekend** was held on February 26-28, 2004; seventy students attended. All BMS PhD programs, with the exception of Biomedical

Engineering, participated. The format followed that of previous years, with a general opening session, in which KerryAnn O'Connor (GSA co-President) gave a presentation on the GSA, program interviews and a dinner on the Friday evening, sponsored by the Graduate School for all interviewees and faculty representatives from each program. The interview weekend is an effective and efficient means of evaluating applicants and publicizing the excellence of the BMS graduate programs.

Four separate days were set aside in the late fall and early spring semesters for **MD/PhD candidate interviews**. These interviews were coordinated with those of the School of Medicine. There were many good, competitive candidates for admission this year; after considerable deliberation, the MD/PhD admissions committee offered admission to two students with full tuition scholarships and stipends for all (seven) years of the program. Both of these students accepted the offers and matriculated in the summer of 2004. Two other applicants were offered admission with tuition scholarship and stipend from the Graduate School only; however, both students declined the offers.

Partnerships and Collaborations

The continuation of current partnerships and the establishment of new partnerships were high priorities this year. Formal and informal, internal and external partnerships are important for effectively publicizing research and graduate program opportunities and for the recruitment of the best available graduate students. In particular, emphasis was placed this year on the use of partnerships for the recruitment of underrepresented minority students into science and biomedical science programs. Participation in the **Florida A&M Feeder Scholars Program** and the **Tennessee State University (TSU) Graduate Scholars Program** continued. The Director of the TSU program and four students attended the BMS Career Day in October 2003. Two students from TSU participated in the EICS summer research program.

Interaction with North Carolina Central University (NCCU) continued through the **“NCCU-WFU Biomedical Sciences Bridge Partnership”** funded at NCCU by the National Institutes of Health (NIH). The first student to complete a master's degree at NCCU through this partnership will matriculate into the PhD program in Physiology and Pharmacology in the fall of 2004. Several other students are currently in the master's degree program at NCCU. One student participated in the 2004 SROP research program. A meeting involving the program PI (Dr. Allyn Howlett) and the Dean of the Graduate School at NCCU (Dr. Percy Murray) with Dean Melson, and Drs. Mike Nader and Allyson Bennett (Physiology and Pharmacology) took place on May 25, 2004. It was agreed that Dr. Bennett would serve as the WFU liaison for the partnership and that opportunities for NCCU graduates of the program to matriculate into several PhD programs at WFU would be investigated.

Dr. Melson continued to serve on the **Research Infrastructure in Minority Institutions (RIMI) Advisory Committee at Winston-Salem State University**. A meeting of the Committee was held at WSSU on November 19, 2003. Several students from WSSU participated in Career Day and in the EICS and SROP programs. With the arrival of Dr. Paul Berberian as Dean of Graduate Studies and Research at WSSU, discussions concerning the development of additional collaborative research and graduate education programs are taking place. In addition to these collaborations, there are opportunities for graduate students and postdoctoral fellows to obtain teaching experience at WSSU.

The collaboration with the **LS-LAMP** program continued, with the Director of Outreach Operations and four winners of oral presentations from the LS-LAMP Research Day visiting WFU for Graduate Student Research Day. One student participated in the EICS summer research program.

In the summer of 2003, the **Greater North Carolina Louis Stokes Alliance for Minority Participation (GNCLSAMP)** was formed. The Alliance consisted of Appalachian State University, Barber Scotia College, Bennett College, Central Piedmont Community College, East Carolina University (ECU), Lenoir-Rhyne College, Livingstone College, Mount Olive College, Pitt Community College, Shaw University, Wake Forest University and Western Carolina University. ECU was designated as the lead institution and would serve as the fiscal agent for the Alliance. The goal of the Alliance was to more than double the number of underrepresented minorities who graduate with bachelor's degrees in Science, Technology, Engineering and Mathematics (STEM) disciplines at partner institutions and enhance students' preparation for graduate degree programs. The Alliance was to request assistance from the National Science Foundation (NSF) to support a five-year plan through aggressive recruitment, sustained curriculum enhancement and a targeted transition to graduate education. The proposal was prepared following several lengthy meetings at partner locations; unfortunately, fiscal difficulties at the lead institution did not allow the proposal to be submitted to NSF. The future of the Alliance is in doubt; however, the goal of the Alliance still exists and a future submission to NSF with many of the same institutions could take place at a future time.

The Graduate School participated in the development of a proposal to create an alliance of institutions that will form the **Mid-Atlantic AGEP Partnership (MAP)**. The proposal was submitted to the NSF for funding under the **Alliances for Graduate Education and the Professoriate (AGEP)** program in July 2004. The lead institution is Virginia Tech, with alliance institutions being the University of Virginia, Virginia Commonwealth University, Wake Forest University and West Virginia University. Partner institutions are James Madison University, Virginia State University and Virginia Union University. The goals of the proposal are to (1) increase the number of underrepresented minority students completing their doctoral programs in STEM fields and entering the professoriate and (2) to foster institutional culture change that will sustain enhanced underrepresented group participation in STEM fields.

The **Virginia Tech-Wake Forest University School of Biomedical Engineering and Sciences (SBES)** formally enrolled its first students, including those who were in biomedical engineering programs at Virginia Tech (VT) and WFU. Dean Melson serves on the Governing Board for the School and attended two meetings at WFU. A planned February meeting of the Board at VT was postponed because of bad weather. Many opportunities for research collaborations between the two institutions are being developed. There is no doubt that the partnership between VT and WFU will lead to new opportunities for students' research and graduate education.

The **Inter-Institutional Academic Collaborative of the Atlantic Coast Conference (IAC of the ACC) Traveling Scholars program** was fully endorsed by all nine of the "original" ACC universities. The IAC Traveling Scholars Program enables doctoral-level students at ACC universities to take advantage of distinctive educational opportunities at any other ACC university without change in registration or increase in

tuition. The program should be better publicized and WFU graduate students should take advantage of these opportunities where appropriate. With Virginia Tech and the University of Miami joining the ACC in the summer of 2004, additional opportunities for graduate student participation are anticipated.

Continuing collaborations within Wake Forest included the **MD/PhD** program with the School of Medicine and the **PhD/MBA** program with the Babcock Graduate School of Management. Both collaborations continue to attract and graduate high quality students to WFU. Expansion of these programs will be dependent on the identification of additional funding sources.

Many additional research and graduate education collaborations, including several that involve cross school and cross campus collaboration, are in place. This year, with the establishment of the **Center for Structural Biology**, located at the Bowman Gray Technical Center, and the hiring of Dr. Jacqueline Fetrow, Reynolds Professor of Computational Biophysics, increased collaborations between faculty in Biochemistry, Chemistry, Computer Science and Physics have been initiated. A proposal to fund the newly established “Interdisciplinary Graduate Track in Structural and Computational Biophysics” was submitted to the Department of Education’s Graduate Assistance in Areas of National Need (GAANN) program. Also, a pre-proposal entitled “Integrating Entrepreneurship into Structural and Computational Biophysics Education” was submitted to the Integrative Graduate Education and Research Traineeship (IGERT) program of NSF. The latter proposal included Dr. Page West of the Wayne Calloway School of Business and Accountancy and personnel from the recently established WFU Center for Entrepreneurship in the Liberal Arts.

The development of contacts and agreements to increase and broaden the international graduate student body were made. A cooperation agreement between the **Organization of American States (OAS)** and WFU to establish The OAS Scholarship Program was negotiated with the assistance of Dr. Pia Wood, Director, Center for International Studies, during the year. The final agreement was signed in the late summer of 2004. Under the agreement, WFU will provide a tuition scholarship for students seeking a master’s degree, with OAS providing round trip airfare, living expenses and allowances for books and health insurance. For the first two years of a doctoral program, students shall receive a tuition scholarship from OAS in addition to the allowances noted above. Beginning with the third year, Wake Forest shall provide a tuition scholarship and cover the student’s expenses. It is hoped that recruitment of students from countries that are part of OAS will begin in the fall of 2004.

Dean Melson met with a delegation of three representatives from the **Embassy of the People’s Republic of China**. A short presentation on the opportunities for graduate education at WFU was made. Representatives from the College, the Babcock Graduate School of Management and the Provost’s office also made presentations. Associate Dean Solano met with the Rector of the **National University of Vietnam** and discussed graduate education opportunities at WFU.

Admissions and Enrollment

Tables 2-7 present data for applicants and matriculants to the Reynolda campus (Reynolda) programs and to the Biomedical Sciences (BMS) programs. While the data are self-explanatory, some observations will be offered.

The numbers of **applicants** for programs on both campuses remained at high levels. Selectivity and yields remained at similar levels to those in previous years.

The numbers of international (non-U.S. citizen) applications to the Reynolda and BMS programs increased significantly from the numbers reported for 2003 (15 and 34% respectively). Note that the data presented in Table 5 were reported to the Council of Graduate Schools (CGS) on June 30 and may not be the same as the final data reported in other tables. Interestingly, the number of applicants from China to the Reynolda programs more than doubled; however, the number applying to the BMS programs decreased by almost 50%. Conversely, the number of applications to Reynolda from India decreased whereas applications from India to the BMS programs increased by a factor of three. As a result of a survey conducted by CGS in the spring of 2004, it was reported that the total number of international applications to the responding schools for fall 2004 declined by 32% from fall 2003. (Over 90% of U.S. responding graduate schools reported an overall decrease in international graduate student applications, only 8% reported an overall increase in applications.) Of the institutions that responded, 76% reported declines from China and 58% reported declines from India, the two largest sending countries. The numbers of U.S. citizens applying to the Reynolda and BMS programs for 2004 were similar to those reported for 2003, in line with numbers reported by other institutions.

Standardized scores and GPA averages for applicant, accepted and matriculated students for the past three years are shown in Table 5 and for matriculated students over the past twelve years in Table 6.

Enrollment

Enrollment was almost seven hundred students (699) in fall 2004 (see Table 8). Of this total, 663 were degree-seeking (321 in PhD programs, 342 in master's programs) and 36 were unclassified students.

The degree-seeking student profile data is presented in Table 9. As in previous years, female students continued to outnumber males on both campuses (Reynolda: 57% to 43%; BMS: 59% to 41%). The Graduate School Diversity Initiative, which was begun in 1999-2000 with the goal of increasing the number of underrepresented minority students continues to be successful, with additional increases in the numbers of underrepresented minorities on both campuses when compared with the enrollment for fall 2003. In fall 2004, 10.1% of domestic students (9.1% of total enrollment) on the Reynolda campus were underrepresented minority students. In the BMS programs, underrepresented minority students in fall 2004 comprised 20.6% of domestic students (17.2% of total enrollment). It should be noted that when the Diversity Initiative was begun, underrepresented minority enrollment stood at between 4-5% on each campus. International student enrollment was 11% of total enrollment in the Reynolda campus

programs and 16.8% in the BMS programs. International students continue to enroll from many countries throughout the world (see Table 10).

Degrees Awarded and Placement

During the 2003-2004 year, two hundred and twenty-one students were awarded a master's or doctoral degree through the Graduate School, the highest number of degrees awarded in one year (see Table 11). This number included forty students who received PhD degrees, the most awarded by Wake Forest in one year. Of these PhD degrees, two were awarded to students from the combined MD/PhD program with the School of Medicine and four were awarded to students from the combined PhD/MBA program with the Babcock Graduate School of Management. It is gratifying to see the number of PhD degrees awarded increasing each year; the projection is for this number to increase steadily over the coming years, reaching at least fifty per year within five years.

The **time to PhD degree** (matriculation to awarding of the degree) data for Reynolda and BMS programs is shown in Table 12. For all programs, students complete the PhD degree, on average, in a little over five years. This is an excellent time for graduation of WFU students when compared with a national time to degree for science students of between six and one half and seven years. Students in the Reynolda campus programs take approximately one semester longer than their counterparts in the BMS programs due to the additional time spent by most Reynolda students as teaching assistants for a portion of their time in residence.

Students enrolled in master's programs on a full-time basis usually complete their programs in two years, or in the time designated for completion of all requirements (e.g., MSA and the MAEd MTF and MTA programs.)

Eight students completed the MAEd degree through the **Visiting International Fellows (VIF)** program; seven were from Jamaica, one from Costa Rica. This was the second class to graduate from this three-summer program. The students perform well in the program and return to their home countries with a WFU graduate degree. A ceremony recognizing these students was held on July 2, 2004; a letter certifying completion of all requirements was presented to each student by Dean Melson.

Table 13 shows post-graduation plans for students who completed the Graduate School Exit Survey.

The **PhD Career Fair** was held on November 13, 2003 at the UNC Friday Center for Continuing Education in Chapel Hill. Dr. Melson and Susan Pierce represented WFU in planning the Fair, together with representatives from the Career Services offices of Duke University, North Carolina State University, UNC-Chapel Hill and UNC-Greensboro. The event was attended by students and postdoctoral fellows (total attendance 274, WFU, 24) and recruiters representing twenty-one employers. The number of employers was the same as for the previous year, while the number of participants increased from 244 in 2002. The Fair is planned to be an annual event in the coming years.

Financial Support

Tables 14 and 15 show the financial support provided to students in the Reynolda campus and BMS graduate programs from 1997-1998 to 2003-2004. The University continues to be the principal source of support for tuition scholarships and for a significant number of teaching assistantships and graduate fellowships, especially for first-year students. It is imperative that WFU continues to offer competitive stipends in each of its disciplines in order to attract the best available graduate students.

For the PhD programs on the Reynolda campus, stipends are becoming non-competitive and the provision of health insurance for these students is urgently needed in order to offer a competitive financial aid package. For the second year, it was not possible to increase stipends through the Graduate School budget, which remained flat for the second year. The chemistry program increased its stipend for 2003-2004 at the expense of the number of assistantships. This provided a significant increase (\$1,500) but decreased the number of students who could be supported. This approach cannot be used routinely to improve the financial aid.

The Graduate School collaborated with the new Associate Provost for Research, Dr. Mark Welker, on the development of a policy to raise funds for student stipends through tuition charges on external grant proposals. The policy, which went into effect on April 15, 2004, allows for graduate student tuition charges to sponsored projects (where allowed by sponsor guidelines) at 5% of the total direct costs requested annually up to \$100,000 per year annual request. Proposals with annual direct costs requests of greater than \$100,000 per year will request partial tuition of \$5,000 per assistant per year. Any recovered funds obtained through this process will be transferred to a designated account under the control of the Dean of the Graduate School on September 30 for use in increasing graduate student financial aid in programs on the Reynolda campus in the following year.

Stipends for students in all BMS programs were increased for the second year (to \$20,000) as agreed upon in a memorandum negotiated in 2001-2002. The stipend for fall 2004 will be \$20,772, which is the current NRSA stipend level. In 2003-2004, the health insurance premium through the student plan was increased to \$1,200 per year. The increasing cost of providing this supplement is placing a strain on the budget, with a 49% increase in the premium projected for 2004-2005. However, the institution must be prepared to provide supplements that make the insurance premium affordable for all students who request coverage.

External support for students, especially for those in the PhD programs, increased on both the Reynolda campus and in the BMS programs. For the BMS programs, the number of students supported from external sources in 2003-2004 has increased by 50% since 2001-2002, a remarkable increase and one for which the faculty and students are to be congratulated. The number of Reynolda campus tuition scholarships associated with students receiving external stipend support continues to steadily increase; it is anticipated that this number will continue to increase as the number of proposals submitted to external agencies increases. The increased success of the faculty and students in obtaining external support reflects well on the quality of research conducted on both campuses and on the graduate education programs at Wake Forest. Increases in the numbers of students in graduate programs will be largely dependent on the receipt of

additional external financial support in the coming years, with faculty, students and administrators being encouraged to be more actively engaged in securing external funding.

In addition to the many proposals submitted by the faculty and students for financial support, the administration of the Graduate School has been actively involved in supporting proposals for external support of graduate students this year.

A proposal was submitted to the Department of Education (DOE) **Graduate Assistance in Areas of National Need (GAANN)** program to support the “Interdisciplinary Graduate Track in Structural and Computational Biophysics.” This proposal involved faculty from the departments of Biochemistry, Chemistry, Computer Science and Physics and requested support for several students per year. Notice was recently received that this proposal will not be funded this year; however the two reported reviewers scores of 93 and 94% suggest that a resubmission in which the comments of the reviewers are addressed should be very competitive for funding. A resubmission will be made in fall 2004 if the DOE publishes a request for proposals.

A pre-proposal entitled “Integrating Entrepreneurship into Structural and Computational Biophysics Education” was submitted to the **Integrative Graduate Education and Research Traineeship (IGERT)** program of NSF. If successful, a full proposal will be submitted in fall 2004. This proposal, which includes faculty from the newly-established WFU Center for Entrepreneurship in the Liberal Arts and the departments of Biochemistry, Chemistry, Computer Science and Physics, is requesting stipend support for several graduate students.

The proposal submitted to the National Science Foundation under the **Alliances for Graduate Education and the Professoriate (AGEP)** program in July 2004 (see earlier) will provide funding for hiring a part-time coordinator, for travel and for recruitment activities if awarded. The overall goal of the proposal is to increase the number of underrepresented minorities completing their doctoral programs in STEM fields and entering the professoriate.

A proposal to support the Ethics and Professional Development Program at WFU was submitted to the **Survival Skills and Ethics Program**, an NIH program administered through the University of Pittsburgh, in July 2004. If awarded, the funds will be matched by the Graduate School and used to bring expert speakers and panel discussants to interact with graduate students and postdoctoral fellows. The proposal follows the participation of Drs. Nancy Jones (Pathology) and Mike Tytell (Neurobiology and Anatomy) in the Summer 2004 Conference on Teaching Survival Skills and Ethics hosted by the University of Pittsburgh in Aspen, CO.

A proposal was submitted to NSF by Dr. Angela King, Lecturer in Chemistry for support of the **SCIMAX Biotech** program that was developed in conjunction with the Winston-Salem/Forsyth County and Stokes County school systems. If awarded, graduate students in biology, chemistry, mathematics and physics will be supported through this grant and will serve as teaching fellows in leadership and intellectually stimulating roles. They will develop an appreciation for K12 science education and communication skills and will be exposed to significant professional development opportunities.

The proposal prepared by the **Greater North Carolina Louis Stokes Alliance for Minority Participation (GNCLSAMP)** during the summer and fall of 2003 was not submitted by the fiscal agent for the Alliance, East Carolina University (ECU), to NSF in October due to administrative difficulties at ECU. This proposal included commitments of faculty effort from the WFU departments of Biology, Chemistry, Computer Science, Mathematics and Physics and similar departments at several other institutions in North Carolina. A future submission may take place if the administrative difficulties can be overcome.

Four students received funding through the **Richter Scholars program** on the Reynolda campus. Seventeen project proposals from ten different programs were reviewed by a committee chaired by Dr. Solano. Each student selected for a grant has a faculty advisor for his or her project. The 2004 Richter Scholars were from graduate programs in Communication (Terry Dumansky, travel to Switzerland, Dr. Jill McMillan advisor), Chemistry (Jennifer Rust, travel to Brazil, Dr. Bradley Jones advisor), English (Christopher Margrave, travel to Ireland, Dr. Jefferson Holdridge advisor) and Liberal Studies (Lamaya Covington, travel to Holland, Dr. Anne Boyle advisor). The program, now in its fourth year, provides unique opportunities for the students and support from the Richter program is greatly appreciated.

Ms. Helen Dowling, Assistant Director of Alumni Affairs at WFUBMC again assisted the Graduate School in fund-raising efforts for the **Graduate School Annual Fund**. A phonathon was conducted in the fall of 2003, and solicitation letters were sent to alumni of the biomedical sciences programs. Ms. Dowling also coordinated a separate solicitation that was sent to Department of Biochemistry alumni. For the fiscal year ending June 30, 2004, gift payments totaling \$6,745 were received from 77 donors; four corporations also provided matching contributions. It should be noted that the number of donors and the value of gifts received increased significantly from last year (56 participants and \$3,075 respectively.) Thanks to Helen for a great job in continuing the development of the Graduate School Fund.

On the Reynolda campus, a mail solicitation was sent to alumni in the late fall of 2003. This was the first time that alumni of the Reynolda campus programs of the Graduate School had been targeted for contributions to the **Graduate School Annual Fund**. As of June 30, 2004, fifty-five donors had contributed a total of \$3,660 to the Fund. This is an important first step in raising unrestricted funds for use by the Graduate School and efforts to increase participation and contributions should be continued.

The administration of the Graduate School is most appreciative of the contributions made by alumni from the Biomedical Sciences and the Reynolda campus programs. With the current limitations on institutional budgets, the monies raised through the two funds are important for meeting a variety of needs in the Graduate School. It is hoped that participation and contributions to the funds will continue to grow in the coming years.

Postdoctoral Affairs

Postdoctoral Fellows Drs. John Connor (Biochemistry) and Ellen Palmer (Microbiology and Immunology) continued to work with Dean Melson on addressing the concerns of all postdoctoral fellows at the institution. A presentation was made to the Faculty Executive Committee (FEC) of WFUBMC in September 2003 by Dean Melson, Dr. Connor and Dr.

Palmer. The development of guidelines for terms and conditions of postdoctoral fellow employment was encouraged for all departments. During the year, the Department of Cancer Biology developed and approved “Postdoctoral Training, Policies and Guidelines.” This document defined a postdoctoral research fellow and stated policies on appointments status, remuneration, evaluation of performance, faculty responsibilities, career development guidelines and obligations of the postdoctoral fellow. The document should serve as a model for other departments to follow, with the goal for adoption of a University-wide document in the near future.

A Postdoctoral Fellows Association (PDA) was formed, with Drs. Connor and Palmer as co-Presidents. The PDA held monthly meetings to which all postdocs were invited; Dean Melson addressed the first meeting in September 2003. Dr. Palmer attended the Annual Meeting of the National Postdoctoral Association in Washington D.C. on April 16 and 17, 2004. Drs. Connor, Jennings-Gee (Cancer Biology) and Fitsanakis (Physiology and Pharmacology) attended “Mentoring for Success: A Workshop for Future Faculty” held at NCSU on April 23, 2004. The website for the Office of Postdoctoral Affairs (www.wfubmc.edu/postdoc) continued to be developed.

The **Sigma Xi Postdoctoral Fellows survey**, for which Wake Forest University had volunteered to be a participant, was conducted during the middle of the year. A Steering Committee consisting of Dean Melson, Dr. Connor and faculty member and WFU Sigma Xi Chapter President Dr. Ron Oppenheim (Neurobiology and Anatomy) established the procedures for administering the survey in coordination with Sigma Xi. The survey was sent to all identified postdoctoral fellows at WFU in July 2004.

Professional Activities

Dean Melson and Associate Dean Solano continued to be involved in a variety of external professional activities during the year. Dr. Solano attended the annual meeting of the North Carolina Conference of Graduate Schools (NCCGS) at UNC-Charlotte on November 7, 2003. Dr. Melson was re-elected as Treasurer for 2003-2004. It was agreed that NCCGS would partially support a reception to be held at the Annual Meeting of the Conference of Southern Graduate Schools (CSGS) in February 2004.

Dr. Solano served as the external reviewer for the Master of Arts in Liberal Studies (MALS) program at North Carolina State University. She attended the American Council on Education Women’s Leadership Forum at the University of South Carolina at Spartanburg in April and the Women Administrators in NC Higher Education meeting at Salem College in March.

Dr. Melson served as Past-President of CSGS, as a member of its Executive Committee until February 2004 and as chair of the Nominations Committee. At the CSGS Annual Meeting held in Charlotte from February 20-23, 2004, Dr. Melson served as a facilitator for the Table Top Discussions and recruited the ten exhibitors who were present at the meeting. Dr. Solano continued as a member of the CSGS Master’s Thesis Award Committee this year. She presented a table top session on cross-listed undergraduate and graduate courses. Dr. Solano also attended a special session at the CSGS meeting on fund raising. Dr. Melson (as past President of CSGS) represented CSGS as liaison to the Council of Graduate Schools (CGS) Board of Directors at their meeting in December 2003.

Dr. Melson attended the Annual Meeting of CGS in San Francisco in December 2003. At the meeting, he gave a report on WFU activities at the second meeting of the Consortium for American Indian Graduate Education. He also attended the CGS Summer Workshop for Graduate Deans in San Juan, PR, from July 11-14, 2004.

Dr. Melson continued as the WFU Councilor to the Oak Ridge Associated Universities (ORAU), but was unable to attend the Annual Meeting of ORAU in March due to a scheduling conflict.

PROJECTIONS FOR THE 2004-2005 YEAR

The 2004-2005 year will again be a time of financial challenges for the Graduate School, especially for the support of programs on the Reynolda campus, where for the third year a zero percent increase in the budget is in effect. The practice of reducing the number of assistantships to provide a stipend increase to the students cannot be continued without damaging the enrollment in those programs that elect to pursue this option. Increasing student stipends will be a major challenge that must be addressed this year; the Graduate School cannot compete for the best students if its financial aid becomes non-competitive. Furthermore, funds must be identified for the provision of paid health insurance premiums for students in PhD programs who request this support.

The substantial annual increases in student health insurance premium in the BMS programs must be covered since it is imperative that this benefit be provided for students who need the coverage.

Increased effort in seeking external support of graduate students must take place during the year. This effort should involve the Graduate School administration, faculty and students.

Contributions to the Graduate School Annual Funds should be increased during the year. The Graduate School administration will continue to collaborate with the Offices of Development on both campuses. A good start has been made on contacting alumni and friends of the Graduate School; the potential for contributions is high and increased efforts should be made during the year to realize greater participation.

Enrollment projections for all programs and the associated financial needs for the years 2005-06, 06-07 and 07-08 will be developed during the late summer and early fall of 2004. The information will be developed through extensive input from program directors and chairs. The information received will form the basis for enrollment and budget planning for the next three years.

All aspects of the student recruiting effort will be considered during the year. Associate Dean Solano will chair a Task Force of graduate program directors from both campuses to discuss how the Graduate School administration, faculty and students may increase the number and quality of applicants and matriculants to all programs. The Graduate School must establish "Best Practices" in student recruiting and determine where to invest both its financial and personnel resources. Increasing the diversity of the student body must also be addressed in these discussions.

Review of the Biomedical Sciences graduate programs will take place during the year. The timing of the review maintains the seven year schedule for review of the BMS programs that was established after the 1990-1991 review (the programs were last reviewed in 1997-98). Review of the Department of Mathematics will also occur; this is the only department/program on the Reynolda campus with a graduate program that will be reviewed during the year. Preparation for the Southern Association of Colleges and Schools (SACS) accreditation of Wake Forest will take place. The comprehensive data collection that takes place for the preparation of the annual reports should assist the

Graduate School in the preparation of the SACS compliance document, which is to be completed by August 2005.

The Graduate Council and Graduate Faculty will need to adopt the Honor Code for the Graduate School during the year. There is an immediate need for this document and the extensive discussions that have taken place during the past two years should lead to its adoption.

The maintenance of existing partnerships and the development of new areas of cooperation will be high priorities during the year. The continued development of the diversity of the graduate student body will be a major consideration in developing all partnerships and collaborations. Attention will be placed on the recruitment of increased numbers of underrepresented minorities and the establishment of new international collaborations.

The future of a WFU Center for Bioethics and the projected master's degree program in bioethics should be determined during the year. Discussions on these topics have been conducted for the past three years and decisions to go forward or not with both of these projects need to be reached.

Oversight of Postdoctoral Affairs will continue through the Graduate School. Activities of the PDA and expenses for postdoctoral fellows to attend meetings associated with national postdoctoral fellows organizations are currently paid for through the Graduate School budget; however, such funding should be provided from other sources. The Sigma Xi Postdoctoral Fellows survey will be completed. Preparation of a University-wide "Policies and Procedures" document should be considered, using established departmental policies as guidelines. The Advisory Committee should be activated.

The current discussions on the implementation of the Banner administrative system on the Reynolda campus will continue and the Graduate School staff will be heavily involved in these discussions. It is anticipated that when implemented, the system will assist in the efficient processing of applications and record keeping. For the BMS programs, the PeopleSoft system will be examined to allow on-line review of student applications by program directors through the Graduate School data base to take place. Such review is also planned to be part of the Banner system.

During the coming year, the Graduate School will be working closely with several new academic administrators. Dr. Debbie Best assumed the position of Dean of the College on July 1, 2004; Dr. Mark Welker was named Associate Provost for Research on the Reynolda campus and Dr. Sally Shumaker was appointed Associate Dean for Research on the Bowman Gray campus. Drs. Melson and Solano have both worked with these excellent faculty members/administrators in a variety of roles during the past several years. They are all supportive of the graduate programs in the Graduate School and thus the administration looks forward to continuing cooperation and support during the forthcoming years.

APPENDIX

Administration, Graduate School of Arts and Sciences

Gordon A. Melson, Ph.D., Dean of the Graduate School of Arts and Sciences,
Professor of Chemistry

Cecilia H. Solano, Ph.D., Associate Dean, Director of the MALS Program,
Associate Professor of Psychology

Debbie S. Deheck, Assistant to the Dean,
Reynolda Campus

Carol E. DiGiantomasso, Admissions Coordinator,
Reynolda Campus

Susan C. Pierce, Registrar and Coordinator,
Biomedical Sciences Program, Bowman Gray Campus

Kelley N. Reavis, Administrative Assistant,
Biomedical Sciences Program, Bowman Gray Campus

Beth R. Whitsett, Administrative Secretary,
Biomedical Sciences Program, Bowman Gray Campus

Wanda Duncan, Administrative Coordinator (part-time),
Reynolda Campus

Sheila White, Administrative Assistant (part-time),
Reynolda Campus

Standing Committees of the Graduate School

Graduate Council

Gordon A. Melson, Dean of the Graduate School, Chair
Cecilia H. Solano, Associate Dean of the Graduate School
Martha Alexander-Miller, Microbiology and Immunology (2004)*
Keith D. Bonin, Physics (2005)#
Iris Edwards, Comparative Medicine (2004)
Will Fleeson, Psychology (2004)
Greg Kucera, Hematology/Oncology (2005)
Leah P. McCoy, Education (2005)
Mark Miller, Cancer Biology (2006)
Pat Nixon, Health and Exercise Science (2006)
Ronald W. Oppenheim, Neurobiology and Anatomy (2005)

Graduate Council (cont)

Stephen Robinson, Mathematics (2004)

Peter Santago, Biomedical Engineering (2006)

Brian Tague, Biology (2006)

Brian Grimberg, Biology (GSA, Reynolda Campus)

Kerry O'Connor, Physiology/Pharmacology (GSA, Biomedical Sciences)

* Year term expires

Secretary to the Council and Graduate Faculty

Graduate Council Committees

Credentials/Nominations Committee

Greg Kucera (Chair)

Iris Edwards

Stephen Robinson

Brian Tague

Curriculum Committee

Keith Bonin (Chair)

Will Fleeson

Mark Miller

Peter Santago

Policy Committee

Martha Alexander-Miller (Chair)

Brian Grimberg

Leah McCoy

Pat Nixon

Kerry O'Connor

Ron Oppenheim

Biomedical Sciences Committee (Bowman Gray Campus)

Gordon A. Melson, Dean, Chair

Cecilia H. Solano, Associate Dean

Steven A. Akman, Cancer Biology

Martha Alexander-Miller, Microbiology and Immunology

David A. Bass, MD/PhD

Ronny A. Bell, Clinical Epidemiology and Health Services Research

Larry W. Daniel, Biochemistry

Dwayne Godwin, PhD/MBA

Craig Hamilton, Biomedical Engineering

Mark O. Lively, Molecular Genetics

Biomedical Sciences Committee (Bowman Gray Campus) (cont)

Michael Nader, Physiology and Pharmacology (Spring 2004)
Ronald W. Oppenheim, Neuroscience
John S. Parks, Molecular and Cellular Pathobiology
R. Mark Payne, Molecular Medicine
Emilio Salinas, Neurobiology and Anatomy
Kent E. Vrana, Physiology and Pharmacology (Fall 2003)
Patrick Ober, School of Medicine, ex-officio
Susan C. Pierce, Registrar and Coordinator
Sheila L. Vrana, Office of Research, ex-officio

Graduate Program Directors Committee (Reynolda Campus)

Gordon A. Melson, Dean, Chair
Cecilia H. Solano, Associate Dean
Terry A. Baker, Accountancy
Keith D. Bonin, Physics
Dale Dagenbach, Psychology
Bashir El-Beshti, English (Fall 2003)
Samuel T. Gladding, Counseling
Kenneth G. Hoglund, Religion
David John, Computer Science
Dilip Kondepudi, Chemistry
Kathy Kron, Biology
Anthony P. Marsh, Health and Exercise Science
Leah P. McCoy, Education
Ananda Mitra, Communication
Stephen Robinson, Mathematics
Gale Sigal, English (Spring 2004)
Cecilia H. Solano, MALS

MD/PhD Committee

David A. Bass, Internal Medicine, Pulmonary and Critical Care Medicine, Chair
Gordon A. Melson, Dean, Graduate School
Lewis H. Nelson, Associate Dean, Student Services and Admissions, School of Medicine

PhD/MBA Committee

Dwayne W. Godwin, Neurobiology and Anatomy, Chair
Carolyn P. Campbell, Babcock Graduate School of Management
J. Kendall Middaugh, Babcock Graduate School of Management
Mark O. Lively, Biochemistry
Mark T. Wallace, Neurobiology and Anatomy
Sheila L. Vrana, Office of Research

Graduate Internships Committee

Michael Tytell, Neurobiology and Anatomy, Chair
Daniel Kim-Shapiro, Physics
Gordon A. Melson, Dean, Graduate School
Peter Santago, Biomedical Engineering
Samir Shah, Graduate Student, Biomedical Engineering
Audrey Stone, Development and Alumni Affairs
Terry Stout, Office of Research
Jeffrey Weiner, Physiology and Pharmacology

Graduate Faculty Representatives

University Senate

Dale Dagenbach, Psychology (2005)
Gregory Shelness, Pathology/Comparative Medicine (2006)
Mary Sorci-Thomas, Pathology/Comparative Medicine (2004)

Faculty Grievance Liaison Persons

Dale Dagenbach, Psychology (2006) - Primary
Leslie B. Poole, Biochemistry (2006) - Alternate

Graduate Student Liaison Persons

Sara Jones, Physiology and Pharmacology (2006)
Clifford Zeyl, Biology (2006)

Task Force on Bioethics

Gordon A. Melson, Dean, Graduate School, Co-Chair
Sally A. Shumaker, Public Health Sciences, Co-Chair
Christine Coughlin, School of Law
Mark Hall, School of Law
Hannah Hardgrave, Philosophy
Michael Hyde, Communication
Nancy Jones, Pathology
Fred Kahl, Cardiology

Graduate School Advisory Committee (GSAC) of the Board of Visitors

Frank Bragg	Charlotte, NC (2003)*
Pete Daniel	Atlanta, GA (2005)
Skip Dunn	Winston-Salem, NC (2004)
Laura Elliott	Great Falls, VA (2004)
Gloria Graham	Winston-Salem, NC (2007)
George Hundley	Secaucus, NJ (2006)

Graduate School Advisory Committee (GSAC) of the Board of Visitors (cont)

Steve Hurst	New York, NY (2007)
Nancy Ingram	Winston-Salem, NC (2004)
Tim Lam	Vienna, VA (2004)
Beverly Lambert	Roanoke, VA (2005)
Bob Lee	Stanford, CT (2007)
Jack Lowden	Greenwich, CT (2004)
Annis Paschal Lyles	Atlanta, GA (2004)
Whit McDowell	Charlotte, NC (2007)
Janice Story	Trustee Liaison (ex-officio)
Carl Tucker	Pageland, SC (2004)
Doug Waller	Washington, DC (2006)
Woody Webb	Raleigh, NC (2005)
Walter Zultowski	Hartford, CT (2004)

*Term expires

TABLE 1. GRADUATE PROGRAMS AT WAKE FOREST UNIVERSITY, 2003-2004

REYNOLDA CAMPUS PROGRAMS

ACC	Accountancy	MSA	With the Wayne Calloway School of Business and Accountancy
BIO	Biology	PhD, MS	
CHM	Chemistry	PhD, MS	
CNS	Counseling	MA	
COM	Communication	MA	
CSC	Computer Science	MS	
EDU	Education	MAEd	
ENG	English	MA	
HES	Health and Exercise Science	MS	
MLS	Liberal Studies	MALS	
MTH	Mathematics	MA	
PHY	Physics	PhD, MS	
PSY	Psychology	MA	
REL	Religion	MA	

BIOMEDICAL SCIENCES PROGRAMS

BICM	Biochemistry and Molecular Biology	PhD
BMEG	Biomedical Engineering	PhD, MS
CABI	Cancer Biology	PhD
CEHS	Clinical Epidemiology and Health Services Research	MS
COMD	Comparative Medicine	MS
MICR	Microbiology and Immunology	PhD
MCPA	Molecular and Cellular Pathobiology	PhD
MOGN	Molecular Genetics	PhD
MOME	Molecular Medicine	PhD, MS
NBAT	Neurobiology and Anatomy	PhD
NUSC	Neuroscience	PhD
PHAR	Pharmacology	PhD
PHYS	Physiology	PhD

COMBINED PROGRAMS

MD/PhD	With the WFU School of Medicine With the WFU
PhD/MBA	Babcock Graduate School of Management

**TABLE 2. APPLICATION STATISTICS
1992-2004**

REYNOLDA CAMPUS PROGRAMS

Year (Fall)	Applications	Accepted	Matriculated
1992	507	153 (30.2%)	127 (83.0%)
1993	553	160 (28.9%)	132 (82.5%)
1994	590	184 (31.2%)	155 (84.2%)
1995	630	227 (36.0%)	190 (83.7%)
1996	581*	193 (33.2%)	172 (89.1%)
1997	642	189 (29.4%)	154 (81.5%)
1998	617	236 (38.2%)	171 (72.5%)
1999	569	262 (46.0%)	166 (63.3%)
2000	564	221 (39.1%)	174 (78.7%)
2001	607	247 (40.7%)	171 (69.2%)
2002	729	248 (34.0%)	181 (73.0%)
2003	640	239 (37.3%)	198 (82.8%)
2004	642	228 (35.5%)	186 (81.6%)

BIOMEDICAL SCIENCES PROGRAMS

1992	264	75 (28.4%)	39 (52.0%)
1993	368	78 (21.2%)	45 (51.3%)
1994	589	60 (10.2%)	44 (73.3%)
1995	333*	64 (19.2%)	36 (56.3%)
1996	265	64 (24.1%)	34 (56.3%)
1997	290	83 (28.6%)	42 (50.6%)
1998	315	87 (27.6%)	44 (50.6%)
1999	265	79 (29.8%)	43 (54.4%)
2000	325	87 (26.8%)	52 (59.8%)
2001	282	85 (30.1%)	47 (55.3%)
2002	329	98 (29.8%)	55 (56.1%)
2003	346	105 (30.3%)	73 (69.5%)
2004	401	120 (29.9%)	72 (60.0%)

*Restrictions on international applications introduced

TABLE 3. STUDENT PROFILE, APPLICANTS, ACCEPTED, MATRICULANTS, FALL 2002 - FALL 2004

REYNOLDA CAMPUS PROGRAMS

	Male	Female	Unk	TOTAL	White	Black	Hispanic	Asian*	Am Ind	Intern#	Unk
<u>Applicants</u>											
2002	289	440	0	729	414	43	10	19	1	217	25
2003	243	397	0	640	443	23	12	7	1	114	40
2004	237	405	0	642	423	20	11	10	0	131	47
<u>Accepted</u>											
2002	96	152	0	248	187	12	5	5	1	29	9
2003	92	147	0	239	185	9	2	3	0	29	11
2004	94	134	0	228	174	7	4	2	0	30	11
<u>Selectivity</u>											
2002				34.0%							
2003				37.3%							
2004				35.5%							
<u>Matriculants</u>											
2002	60	121	0	181	151	11	2	5	1	11	0
2003	83	115	0	198	176	6	2	4	0	10	0
2004	76	110	0	186	153	15	2	1	0	15	0
<u>Yield</u>											
2002				73.0%							
2003				82.8%							
2004				81.6%							

BIOMEDICAL SCIENCES PROGRAMS

<u>Applicants</u>											
2002	172	157	0	329	156	36	7	19	1	104	6
2003	163	182	1	346	161	26	8	22	2	114	13
2004	192	193	16	401	190	25	13	21	1	121	30
<u>Accepted</u>											
2002	49	49	0	98	65	14	4	4	0	9	2
2003	46	59	0	105	72	6	3	9	0	15	0
2004	47	73	0	120	77	10	5	2	0	20	6
<u>Selectivity</u>											
2002				29.8%							
2003				30.3%							
2004				29.9%							
<u>Matriculants</u>											
2002	27	28	0	55	34	11	0	1	0	9	0
2003	34	39	0	73	49	6	3	5	0	10	0
2004	30	42	0	72	43	8	3	1	0	17	0
<u>Yield</u>											
2002				56.1%							
2003				69.5%							
2004				60.0%							

*U.S. Address, Asian Ethnicity

Non-U.S. Address, Ethnicity not checked

Applicants: Completed applications received

Accepted: Students to whom offers of admission were made

Matriculants: Students who enrolled

**TABLE 4. STUDENT PROFILE, APPLICANTS, MATRICULANTS, DEMOGRAPHICS
FALL 2002-FALL 2004**

REYNOLDA CAMPUS PROGRAMS

	2002		2003		2004	
State*	Applicants	Matriculants	Applicants	Matriculants	Applicants	Matriculants
AL	7	1	4	1	8	2
CA	9	3	5	1	13	7
FL	13	3	12	3	23	4
GA	18	5 (2.8%)	24 (3.8%)	6 (3.0%)	22 (3.4%)	6 (3.2%)
MD	11	1	8	1	9	2
NC	302 (41.4%)	113 (62.4%)	325 (51%)	120 (61%)	278 (43.3%)	107 (57.5%)
NJ	2	0	1	0	5	1
NY	10	1	17	2	18	6
OH	12	3	14	5	10	0
PA	28 (3.8%)	5	22 (3.4%)	4	19 (3.0%)	4
SC	23	5	36 (5.6%)	10 (5.1%)	27 (4.2%)	6 (3.2%)
TN	14	3	6	2	8	2
TX	6	1	8	3	5	1
VA	29 (4.0%)	9 (5.0%)	35 (5.5%)	10 (5.1%)	31 (4.8%)	9 (4.8%)
Other States	82 (11.2%)	17 (9.4%)	74 (12%)	20 (10.1%)	86 (13.4%)	14 (7.5%)
Intern &Unkn	163 (22.4%)	11 (6.1%)	49 (8%)	10 (5.1%)	80 (12.5%)	15 (8.1%)
TOTAL	729	181	640	198	642	186

*State of student permanent address

**TABLE 4 (CONT). STUDENT PROFILE, APPLICANTS, MATRICULANTS, DEMOGRAPHICS
FALL 2002-FALL 2004**

BIOMEDICAL SCIENCES PROGRAMS

	2002		2003		2004	
State*	Applicants	Matriculants	Applicants	Matriculants	Applicants	Matriculants
AL	0	0	0	0	1	0
CA	9	2	5	1	13	1
FL	14 (4.3%)	5 (9.1%)	14 (4.0%)	3 (4.1%)	15 (3.7%)	0
GA	8	1	10	2	12	4
MD	9	3	12	3	11	2
NC	70 (21.2%)	23 (41.8%)	70 (20.2%)	26 (35.6%)	82 (20.4%)	22 (30.6%)
NJ	4	2	5	2	7	1
NY	13	0	7	1	8	2
OH	5	1	5	1	7	3
PA	13 (4.0%)	4 (5.6%)	12 (3.5%)	3 (4.1%)	13 (3.2%)	1
SC	5	1	7	1	8	2
TN	4	1	5	1	1	1
TX	3	0	8	1	11	3
VA	22	0	27	12	20	6
Other States	46 (14.0%)	3 (5.5%)	45 (13.0%)	6 (8.2%)	65 (16.2%)	6 (8.3%)
Intern &Unkn	104 (31.6%)	9 (16.2%)	114 (32.9%)	10 (13.7%)	127 (31.7%)	18 (25.0%)
TOTAL	329	55	346	73	401	72

*State of student permanent address

TABLE 5. US - CITIZEN¹/NON - CITIZEN APPLICATIONS²

	US Citizens		Non-Citizens	
	2003	2004	2003	2004
Reynolda	518	507	118	136
China			36	77
India			18	13
Biomedical Sciences	232	233	114	153
China			68	35
India			17	51

¹Includes permanent residents

²As reported to CGS, June 30 of each year

**TABLE 6. STANDARDIZED SCORES AND GRADE POINT AVERAGES (GPA)
FALL 2002-FALL 2004**

REYNOLDA CAMPUS PROGRAMS

	Verb	Quant	(V+Q)	Anal	TOTAL	GPA	TOEFL	GMAT	GRE Anal
<u>Applicants</u>									
2002	529	638	1167	637	1804	3.4	613	622	
2003	528	636	1164	623	1787	3.4	613	626	4.61
2004	531	631	1162	608	1770	3.4	607	627	4.67
<u>Accepted</u>									
2002	529	640	1169	638	1807	3.5	610	627	
2003	560	664	1224	676	1900	3.5	627	639	
2004	579	690	1269	632	1901	3.5	603	639	4.84
<u>Matriculants</u>									
2002	515	624	1139	622	1761	3.5	580	629	
2003	561	662	1223	673	1896	3.5	630	645	
2004	546	645	1191	637	1828	3.5	607	634	4.81

BIOMEDICAL SCIENCES PROGRAMS

<u>Applicants</u>									
2002	552	684	1236	659	1895	3.3	264*		
2003	536	681	1217	668	1885	3.3	258*		
2004	511	684	1195	597	1792	3.3	261*		
<u>Accepted</u>									
2002	532	667	1199	641	1840	3.3	268*		
2003	529	673	1202	667	1869	3.4	258*		
2004	519	681	1200	673	1873	3.5	266*		
<u>Matriculants</u>									
2002	525	646	1171	621	1792	3.2	260*		
2003	516	658	1174	652	1826	3.4	252*		
2004	503	670	1173	651	1824	3.4	265*		

*Computer-based test results

**TABLE 7. STANDARDIZED TEST SCORES FOR MATRICULATED STUDENTS
GRADUATE RECORD EXAMINATION (GRE) SCORES**

REYNOLDA CAMPUS PROGRAMS

<u>Year (Fall)</u>	<u>Verbal (%)*</u>	<u>Quantitative (%)*</u>	<u>(Combined)</u>	<u>Analytical (%)*</u>	<u>(Total)</u>
1992	556	614	(1180)	615	(1795)
1993	600	640	(1240)	664	(1904)
1994	610	640	(1250)	670	(1920)
1995	600	650	(1250)	680	(1930)
1996	530	610	(1140)	620	(1760)
1997	565	636	(1201)	657	(1858)
1998	539	601	(1140)	612	(1752)
1999	533	634	(1167)	622	(1789)
2000	535 (69%)	634 (64%)	(1169)	647 (74%)	(1816)
2001	523 (66%)	630 (62%)	(1153)	627 (68%)	(1780)
2002	515 (62%)	624 (57%)	(1139)	622 (62%)	(1761)
2003	561 (76%)	662 (64%)	(1223)	673 (71%)	(1896)
2004	546 (69%)	645 (55%)	(1191)	637 (65%)	(1828)

BIOMEDICAL SCIENCES PROGRAMS

1992	549	660	(1209)	596	(1805)
1993	564	625	(1189)	612	(1801)
1994	541	653	(1194)	620	(1814)
1995	545	655	(1200)	653	(1853)
1996	564	680	(1244)	634	(1878)
1997	551	668	(1219)	636	(1855)
1998	534	643	(1177)	636	(1813)
1999	544	642	(1186)	657	(1843)
2000	531 (68%)	660 (71%)	(1191)	667 (79%)	(1858)
2001	517 (64%)	635 (63%)	(1152)	640 (72%)	(1792)
2002	525 (65%)	646 (59%)	(1171)	621 (61%)	(1792)
2003	516 (64%)	658 (64%)	(1174)	652 (68%)	(1826)
2004	503 (60%)	670 (62%)	(1173)	651	(1824)

National mean all takers:

2000-2003	470	598	(1068)	4.2	
-----------	-----	-----	--------	-----	--

**TABLE 7 (CONT). STANDARDIZED TEST SCORES FOR MATRICULATED
STUDENTS GRADUATE MANAGEMENT ADMISSIONS TEST
GMAT SCORES**

ACCOUNTANCY PROGRAM

Year (Fall)	Score (%)*
1995	600
1996	550
1997	615
1998	626
1999	649
2000	646 (84%)
2001	635 (81%)
2002	629 (80%)
2003	645 (81%)
2004	634 (79%)

National Mean (50%), all takers:

2000-2002	528
-----------	-----

*Percent of examinees scoring lower than stated score

**STANDARDIZED TEST SCORES FOR MATRICULATED STUDENTS
MEDICAL COLLEGE ADMISSIONS TEST (MCAT) SCORES**

MD/PhD PROGRAM

Year (Fall)	Verb	Phys	Biol	Total
1997				33
1998				34
1999				34
2000	7.5	11.5	11	30
2001	10	12	12	34
2002	12	12	10	34
2003	11	12	11	34
2004	8	13	11	32

**TABLE 8. STUDENT ENROLLMENT
FALL 1997-FALL 2004**

REYNOLDA CAMPUS PROGRAMS

<u>Year</u>	<u>F97</u>	<u>F98</u>	<u>F99</u>	<u>F00</u>	<u>F01</u>	<u>F02</u>	<u>F03</u>	<u>F04</u>
PhD Programs								
BIO	32	29	35	35	25	31	39	36
CHM	34	29	25	26	35	34	33	30
PHY	17	20	18	17	24	23	24	22
TOTAL	83	78	78	78	84	88	96	88
Masters-only Programs								
ACC	67	66	39*	60*	58*	62*	58*	58*
ANT	11	7	5	3	3	0	0	0
CNS	29	29	29	28	28	31	31	31
COM	20	25	20	19	19	21	25	23
CSC	10	12	15	14	14	16	17	13
EDU	36	35	32	24	29	30	32	33
ENG	21	16	20	20	17	20	26	26
HES	14	14	15	13	13	14	14	14
HST	19	21	9	5	1	0	0	0
MLS	53	52	61	62	48	52	76	68
MTH	12	14	12	14	14	9	14	14
PSY	27	23	24	26	28	30	28	24
REL	18	23	19	14	8	10	13	15
TOTAL	337	337	300	302	280	295	334	319
<u>Unclassified</u>								
TOTAL	24	26	22	19	33	20	21	15
TOTAL	444	441	400	399	397	403	451	422

* Does not include 4th year Accountancy students

**TABLE 8 (CONT). STUDENT ENROLLMENT
FALL 1997-FALL 2004**

BIOMEDICAL SCIENCES PROGRAMS

<u>Year</u>	<u>F97</u>	<u>F98</u>	<u>F99</u>	<u>F00</u>	<u>F01</u>	<u>F02</u>	<u>F03</u>	<u>F04</u>
<u>PhD Programs</u>								
BICM	22	23	24	21	21	24	25	31
BMEG	7	9	10	10	6	8	17	19
CABI	3	7	11	12	18	23	22	23
MICR	20	19	20	21	22	26	28	32
MCPA	14	16	18	18	20	18	20	18
MOGN	12	11	13	12	14	14	15	18
MOME		3	7	11	13	16	23	24
NBAT	10	9	12	11	15	15	15	15
NUSC	20	18	19	19	22	27	25	27
PHYS/PHAR	28	29	22	26	26	25	28	26
TOTAL	136	144	156	161	177	196	218	233
<u>Masters Programs</u>								
COMD	0	0	0	0	1	0	0	0
EPID	17	11	8	3	0	1	1	0
HSRE	3	6	7	5	2	2	1	1
BMEG						0	6	6
MOME				1	0	0	1	1
CEHS				10	19	18	17	15
TOTAL	20	17	15	19	22	21	26	23
<u>Unclassified</u>								
TOTAL	10	9	12	6	9	22	22	21
<u>TOTAL</u>	<u>166</u>	<u>170</u>	<u>183</u>	<u>186</u>	<u>208</u>	<u>239</u>	<u>266</u>	<u>277</u>
<u>TOTAL GRADUATE STUDENT ENROLLMENT (ALL programs)</u>								
	610	611	583	585	605	642	717	699

**TABLE 9. STUDENT PROFILE, TOTAL ENROLLMENT, DEGREE-SEEKING STUDENTS
FALL 2003, FALL 2004**

REYNOLDA CAMPUS PROGRAMS

	2003			2004		
	<u>Total</u>	<u>Male</u>	<u>Female</u>	<u>Total</u>	<u>Male</u>	<u>Female</u>
African-American	25	10	15	30	16	14
Asian-American	5	1	4	3	0	3
Hispanic-American	4	0	4	4	0	4
Native-American	1	0	1	0	0	0
Total under-represented	35 (8.1%)	11	24	37 (9.1%)	16	21
White	346	139	207	328	137	189
Total Domestic	381	150	231	365	153	210
International	49 (11.4%)	29	20	45 (11%)	23	21
TOTAL	430	179	251	407	176	231

BIOMEDICAL SCIENCES PROGRAMS

	2003			2004		
	<u>Total</u>	<u>Male</u>	<u>Female</u>	<u>Total</u>	<u>Male</u>	<u>Female</u>
African-American	24	6	18	32	9	23
Asian-American	10	6	4	6	3	3
Hispanic-American	4	2	2	5	3	2
Native-American	1	0	1	1	0	1
Total under-represented	39 (16%)	14	25	44 (17.2%)	15	29
White	168	77	91	169	71	98
Total Domestic	207	91	116	213	86	127
International	37 (15.2%)	18	19	43 (16.8%)	19	24
TOTAL	244	109	135	256	105	151

**TABLE 10. INTERNATIONAL STUDENT PROFILE
FALL 2003**

<u>Reynolda Campus</u>	<u>All</u>	<u>(New)</u>	<u>Biomedical Sciences</u>	<u>All</u>	<u>(New)</u>
<u>Country of Origin</u>			<u>Country of Origin</u>		
Bulgaria	2		Bermuda	1	
Canada	1		Brazil	1	
China	24	(4)	Canada	3	(2)
Eritrea	1		China	10	
France	1		Czech Republic	1	
Hong Kong	1	(1)	Eritrea	1	(1)
India	8	(2)	Ethiopia	1	
Indonesia	2	(1)	Germany	1	
Iran	1		India	5	(4)
Japan	3		Indonesia	1	
Nigeria	1		Korea	1	(1)
Peru	2	(2)	Lebanon	1	
Russia	1		Nepal	1	
South Africa	1		Romania	1	(1)
			Seychelles	1	(1)
			Spain	1	
			Sri Lanka	1	
			Sweden	2	
			Taiwan	1	(1)
			Turkey	1	
			United Kingdom	1	
Total	49	(10)	Total	37	(11)
Degree-seeking enrollment: 430 (198)			Degree-seeking enrollment: 244 (73)		
<u>% International: 11(5)%</u>			<u>% International: 15(15)%</u>		

Total International: 86 (13%) (21) (8%)

<u>Programs of Study</u>		<u>Programs of Study</u>	
Accountancy	4 (2)	Biochemistry/Molecular Biology	6 (1)
Biology	6 (1)	Cancer Biology	3 (1)
Chemistry	13 (3)	Clinical Epid/Health Serv Res	3 (3)
Communication	4	Medical Engineering	4 (1)
Computer Science	6 (2)	Microbiology/Immunology	3
Counseling	1	Molecular/Cellular Pathobiology	2
Education	0	Molecular Genetics	1
English	0	Molecular Medicine	3 (1)
Health and Exercise Science	0	Neurobiology/Anatomy	2
Liberal Studies	1	Neuroscience	3
Mathematics	3 (2)	Pharmacology	5 (4)
Physics	10	Physiology	2 (1)
Psychology	1		

**TABLE 10 (CONT). INTERNATIONAL STUDENT PROFILE
FALL 2004**

<u>Reynolda Campus</u>	<u>All</u>	<u>(New)</u>	<u>Biomedical Sciences</u>	<u>All</u>	<u>(New)</u>
<u>Country of Origin</u>			<u>Country of Origin</u>		
Argentina	1	(1)	Belarus	1	(1)
Austria	1	(1)	Brazil	1	
Canada	2	(1)	Canada	3	(1)
China	21	(6)	China	11	(4)
Eritrea	1		Czech Republic	1	
France	1		Dominican Republic	1	(1)
Hong Kong	1		Ethiopia	1	
India	7	(2)	Germany	1	
Indonesia	2		India	11	(7)
Jamaica	3	(3)	Indonesia	1	
Peru	2		Lebanon	1	
Russia	1		Romania	1	
United Kingdom	1	(1)	Russian Federation	1	(1)
			Seychelles	1	
			Spain	2	(1)
			Sri Lanka	1	
			Sweden	1	
			Switzerland	1	(1)
			Taiwan	1	
			United Kingdom	1	
Total	44	(15)	Total	43	(17)
Degree-seeking enrollment:	407	(186)	Degree-seeking enrollment:	256	(72)
% International: 10.8 (8.1)%			% International: 16.8(23.6)%		

Total International: 86(13.1%)(32)(12.4%)

<u>Programs of Study</u>		<u>Programs of Study</u>	
Accountancy	2	Biochemistry/Molecular Biology	5 (1)
Biology	6 (2)	Cancer Biology	6 (4)
Chemistry	14 (2)	Clinical Epidemiology/Health Serv Res	3
Communication	1 (1)	Biomedical Engineering	8 (6)
Computer Science	4 (2)	Microbiology/Immunology	4 (1)
Counseling	0	Molecular/Cellular Pathobiology	1
Education	6 (6)	Molecular Genetics	1
English	0	Molecular Medicine	4 (2)
Health and Exercise Science	0	Neurobiology/Anatomy	3 (2)
Liberal Studies	1	Neuroscience	2
Mathematics	3 (1)	Pharmacology	4 (1)
Physics	7 (1)	Physiology	2
Psychology	0		
Religion	0		

**TABLE 11. DEGREES AWARDED
1997-1998 TO 2003-2004**

REYNOLDA CAMPUS PROGRAMS

<u>Year</u>	<u>97-98</u>	<u>98-99</u>	<u>99-00</u>	<u>00-01</u>	<u>01-02</u>	<u>02-03</u>	<u>03-04</u>
<u>Ph.D. (M.S.)</u>							
BIO	1 (8)	1 (8)	1 (7)	4 (7)	1 (4)	1 (7)	2 (4)
CHM	5 (4)	8 (0)	6 (1)	1 (1)	4 (0)	3 (3)	3 (4)
PHY	2 (1)	2 (2)	4 (0)	0 (2)	3 (1)	3 (0)	6 (1)
TOTAL	8 (13)	11 (10)	11 (8)	5 (10)	8 (5)	7 (10)	11 (9)
<u>Masters degrees from Masters -only programs</u>							
ACC	36	27	35	44	42	52	47
ANT	3	3	0	0	4	0	0
COM	10	7	12	8	11	9	13
CSC	10	7	10	10	3	8	12
EDU(C)	15	16	15	14	12	15	16
EDU(T)	22	37	32	28	22	26	33
ENG	9	9	6	14	1	7	5
HES	6	7	7	7	6	7	7
HST	8	2	6	1	2	1	0
MLS	20	5	13	10	14	13	9
MTH	5	8	5	6	7	5	4
PSY	18	8	11	10	14	10	12
REL	4	9	1	6	2	1	3
THE	-----						
TOTAL	166	142	147	158	140	154	161
TOTAL	8(179)	11(152)	11(155)	5(168)	8(145)	7(164)	11 (170)

**TABLE 11 (CONT). DEGREES AWARDED
1997-1998 TO 2003-2004**

BIOMEDICAL SCIENCES PROGRAMS

<u>Year</u>	<u>97-98</u>	<u>98-99</u>	<u>99-00</u>	<u>00-01</u>	<u>01-02</u>	<u>02-03</u>	<u>03-04</u>
<u>Ph.D. (M.S.)</u>							
BICM	4 (0)	2 (1)	3 (0)	7 (1)	2 (0)	4 (0)	2 (1)
BMEG			1(0)	3 (0)	1 (0)	1 (0)	2 (0)
CABI			1(0)	1 (0)	0 (0)	4 (0)	3 (1)
MICR	4 (0)	4 (0)	2 (0)	2 (0)	2 (0)	4 (0)	3 (0)
MCPA	3 (0)	1 (1)	1 (0)	2 (0)	3 (0)	2 (3)	2 (0)
MOGN	3 (0)	0 (0)	2 (0)	1 (0)	1 (0)	3 (1)	1 (0)
MOME					2 (0)	0 (0)	4 (0)
NBAT	2 (0)	1 (1)	1 (1)	0 (1)	1 (0)	2 (0)	3 (0)
NUSC	7 (0)	2 (0)	2 (0)	1 (0)	1 (0)	3 (0)	4 (0)
PHAR	1 (0)	8 (0)	3 (1)	3 (0)	4 (0)	4 (0)	4 (1)
PHYS	0 (0)	2 (0)	1 (0)	0 (0)	0 (0)	2 (0)	1 (0)
TOTAL	24 (0)	20 (3)	17 (2)	20 (2)	17 (0)	29 (4)	29 (3)

M.S. from Masters-only programs

CEHS					5	5	7
COMD	0	0	0	0	0	0	0
EPID	3	2	3	3	0	0	1
HSRE			1	1	1	1	0
TOTAL	3	2	4	4	6	6	8

<u>TOTAL</u>	<u>24(3)</u>	<u>20(5)</u>	<u>17(6)</u>	<u>20(6)</u>	<u>17(6)</u>	<u>29 (10)</u>	<u>29 (11)</u>
---------------------	---------------------	---------------------	---------------------	---------------------	---------------------	-----------------------	-----------------------

TOTAL NUMBER OF DEGREES AWARDED (All programs)

32(182)	31(157)	28(161)	25(174)	25(151)	36(174)	40 (181)
----------------	----------------	----------------	----------------	----------------	----------------	-----------------

**TABLE 12. TIME TO PhD DEGREE
1999-2000 TO 2003-2004**

	Number of Years*	
	Reynolda Campus Programs	Biomedical Sciences Programs
Year		
99-00	5.5	5.1
00-01	†	4.8
01-02	5.5	5.2
02-03	5.7	5.2
03-04	4.8	5.2
5-year Average	5.4	5.1

*Years from matriculation to awarding of the degree

†Data not available

TABLE 13. PLACEMENT

2003-2004

REYNOLDA CAMPUS GRADUATES

<u>Program</u>	<u>U/Grad</u>	<u>Degree</u>	<u>Plans</u>
ACC	Davidson College	MSA	Deloitte & Touche Charlotte, NC KPMG Dallas, TX Unknown
	University of Georgia		Unknown
	Xiamen University		Deloitte & Touche Charlotte, NC
	Wake Forest University*		Unknown (5) Ernst & Young Hartford, CT Pursue JD Degree Chicago, IL Pursue MBA, Location Unknown (2) Ernst & Young Memphis, TN Ernst & Young New York, NY (3) Reznick, Fedder and Silverman Bethesda, MD (2) Ernst & Young Greensboro, NC Pursue JD Degree WFU KPMG Greensboro, NC Merrill Lynch New York, NY Ernst & Young Charlotte, NC (2) Ernst & Young San Francisco, CA Pursue MBA, Harvard University Reznick, Fedder and Silverman Washington, DC Pricewaterhouse Coopers, LLP Charlotte, NC Pricewaterhouse Coopers, LLP Washington, DC (4) Reznick, Fedder and Silverman Charlotte, NC

*All subsequent from WFU

**TABLE 13 (CONT). PLACEMENT
2003-2004**

REYNOLDA CAMPUS GRADUATES

<u>Program</u>	<u>U/Grad</u>	<u>Degree</u>	<u>Plans</u>
ACC	WFU*	MSA	Ernst & Young Atlanta, GA (4) Townsend Frew Durham, NC Pricewaterhouse Coopers, LLP Denver, CO KPMG Atlanta, GA Pricewaterhouse Coopers, LLP New York, NY KPMG Charlotte, NC (2)
*All subsequent from WFU			
BIO	University of Rochester Catawba College The Colorado College Lees McRae College Wake Forest University	PhD MS	Post Doc, Location Unknown Pursue PhD, Location Unknown Unknown Biotechnician, U.S. Fish and Wildlife Alaska Pursue PhD University of Vermont
CHM	U.S. Military Academy Henan Normal University Western Carolina University Appalachian State University Armstrong Atlantic State University Francis Marion University University of Florida	PhD MS	Post Doc, FBI Academy Quantico, VA Minnesota Department of Health Minneapolis, MN Unknown Pursue PhD, Wake Forest University Pursue PhD in Chemistry Location Unknown Unknown Pursue PhD, Harvard University
COM	Banaras Hindu University Boston University Brigham Young University Carroll College	MA	Pursue PhD, Georgia State Unknown Unknown Pursue PhD in Communication University of Southern California

**TABLE 13 (CONT). PLACEMENT
2003-2004**

REYNOLDA CAMPUS GRADUATES

<u>Program</u>	<u>U/Grad</u>	<u>Degree</u>	<u>Plans</u>
COM	Central Michigan University	MA	Pursue PhD in Communication Location Unknown
	Concordia College		Pursue PhD Texas A&M
	Dokkyo University		Pursue PhD in Communication Location Unknown
	Kentucky State University		Unknown
	North Carolina State		Unknown
	University of Iowa		Pursue PhD in Communication Texas A&M
	UNC-Chapel Hill		Unknown
	Wake Forest University		Unknown
	Westf-Wilhelms University		Marketing Research Winston-Salem, NC
CSC	Asmara University	MS	Unknown
	Beijing Foreign Studies Univ.		Pursue PhD, Duke University
	Central South University of Technology		Unknown
	Concord College		Unknown
	Elon University		Computer Programmer Biscoe, NC
	High Point		Unknown
	Kavikulguru Institute of Technology and Science		Software Engineer Sunrise, FL
	Mars Hill College		Unknown
	Nankai University		Unknown
	Northeastern University		Pursue PhD, Location Unknown
	University of California		Unknown
	USTC		Pursue PhD, WFU
EDU (C)	College of William & Mary	MAEd	Unknown
	Eastern Michigan University		Manager, Student Programs, WFU
	Edgewood Teacher's Training College		Counselor or Teacher, South Africa
	Florida International University		Counselor, Florida
	James Madison University		Counseling, Baltimore, MD Unknown

**TABLE 13 (CONT). PLACEMENT
2003-2004**

REYNOLDA CAMPUS GRADUATES

<u>Program</u>	<u>U/Grad</u>	<u>Degree</u>	<u>Plans</u>
EDU (C)	UNC-Asheville	MAEd	School Counselor, Asheville, NC
	UNC-Chapel Hill		Pursue PhD, University of Tennessee
	UNC-Greensboro		School Counselor, Winston-Salem, NC
			Counselor, Winston-Salem, NC
	University of Virginia		School Counselor, Winston-Salem, NC
	Vanderbilt University		Unknown
	WFU		Teaching, Greensboro, NC
			Unknown (2)
			Therapist, High Point Regional Hospital
			High Point, NC
EDU (T)	Brown University	MAEd	Teacher, Rhode Island
	Denison University		English Teacher, Reservoir High School
			Fulton, MD
	UNC-Chapel Hill		Teaching, Location Unknown
			Teaching, Wake County Public Schools
			Raleigh, NC
ENG	Mercyhurst College	MA	Freelance writer
	UNC-Asheville		Pursue PhD, Location Unknown
	UNC-Greensboro		Pursue PhD/MFA, Location Unknown
	West Virginia Wesleyan College		Unknown
	WFU		Pursue PhD, Location Unknown
HES	Furman University	MS	Exercise Physiologist, Grace Hospital
			Morganton, NC
	Pepperdine University		Pursue PhD, Michigan State University
	University of Massachusetts		Research Assistant, Location Unknown
	UNC-Chapel Hill		Exercise Physiologist, Duke Center for Living
			Durham, NC
	University of Tennessee		Medical Research, WFUBMC
	Virginia Tech		Unknown
	Washington University-St. Louis		Pursue PhD, Stanford University
MLS	Gettysburg College	MALS	Unknown
	High Point University		Currently Employed, Sara Lee Corp.
	Roanoke College		Pursue MA, University of Virginia

**TABLE 13 (CONT). PLACEMENT
2003-2004**

REYNOLDA CAMPUS GRADUATES

<u>Program</u>	<u>U/Grad</u>	<u>Degree</u>	<u>Plans</u>
MLS	Salem College Texas Christian University UNC-Charlotte WFU	MALS	Developmental Specialist, WFUHS Currently Employed as Writer/Editor Currently Employed, Davidson County Community College Currently Employed Unknown (2)
MTH	Centre College Elon University Salem College WFU	MA	Unknown High School Teacher, Raleigh, NC Pursue PhD, Location Unknown College Instructor, Location Unknown
PHY	Guilford College North Carolina State University Roanoke College Stetson University Tsinghua University Purdue University	PhD MS	Post Doc, Naval Research Laboratory Washington, DC Medical Physics Residency, University of Minnesota, Minneapolis, MN Post Doc, WFU Post Doc, UNC-Chapel Hill Post Doc, National Institutes of Health Bethesda, MD Pursue PhD, Location Unknown
PSY	Appalachian State Bloomberg University Clemson University East Carolina University Miami University Texas Tech University UNC-Chapel Hill University of Florida UNC-Greensboro University of the South Villanova University WFU	MA	Pursue PhD, University of Maryland Pursue PhD, University of Wyoming Unknown Pursue PhD, University of Oregon Pursue PhD, North Carolina State Univ. Research, University of Colorado Pursue PhD, SUNY-Buffalo, NY Pursue PhD, WFUHS Research Associate, UNC-Chapel Hill Unknown Unknown Pursue PhD, Austin, TX
REL	Davidson College North Carolina State Univ. William & Mary	MA	Unknown Pursue PhD, Location Unknown Hollins University, Hollins, VA

**TABLE 13 (CONT). PLACEMENT
2003-2004**

BIOMEDICAL SCIENCES GRADUATES

<u>Program</u>	<u>U/Grad</u>	<u>Degree</u>	<u>Plans</u>
BICM	Warren Wilson College	PhD	Post Doc, WFUSM
	Gettysburg College	PhD	Post Doc, Johns Hopkins, Baltimore, MD
	Catawba College	MS	PA, WFUSM
BMEG	Tsinghua University	PhD	Research Engineer, Autoquant Imaging, Inc., Albany, NY
	Bilkent University	PhD	Faculty, WFUSM Biomedical Engineering
CABI	U.C. Berkeley	PhD	Complete MD @ WFUSM
	UNC-Charlotte	PhD	Post Doc, NIEHS, Research Triangle Park, NC
	Louisiana Tech University	MS	Undecided
	University of Utah	PhD	Post Doc, Location Unknown
CEHS	College of William & Mary	MS	Physician/Researcher, Dartmouth Veterans Affairs Medical Center, White River Junction, Vermont
	Towson University	MS	Project Manager/Research Associate, Location Unknown
	Fairfield University	MS	Research Fellow, WFUSM, Public Health Sciences
	Lafayette College	MS	Research Assistant/Program Evaluation, Denver, Colorado
	Cairo University Medical School	MS	Pursue PhD in Epidemiology
	Western Illinois University	MS	Faculty, WFUSM Family & Community Medicine
	Ain Shams University	MS	Academic Cardiology, Location Unknown
	UNC-Chapel Hill	MS	PhD, UNC-Chapel Hill, Chapel Hill, NC
MICR	Elizabethtown College	PhD	Post Doc, NIH, Bethesda, MD
	Wake Forest University	PhD	Post Doc, Location Unknown
	Wofford College	PhD	Post Doc, National Cancer Institute, Bethesda, MD
MCPA	Catawba College	PhD	Unknown
	Western Oregon University	PhD	Post Doc, SUNY at Stony Brook, Long Island, NY
MOGN	Campbell University	PhD	Assistant Professor of Biology, Bluefield College, Bluefield, West Virginia

**TABLE 13 (CONT). PLACEMENT
2003-2004**

BIOMEDICAL SCIENCES GRADUATES

<u>Program</u>	<u>U/Grad</u>	<u>Degree</u>	<u>Plans</u>
MOME	UNC-Chapel Hill	PhD/MBA	Vice President of Business Development, Incapita, Winston-Salem, NC
	State University of New York at Freedonia	PhD	Assistant Professor of Biology, State University of New York at Oswego, Oswego, New York
	James Madison University	PhD	Fellowship, Medical Genetics, Boston University School of Medicine, Boston, MA
	Salem College	PhD	Post Doc, National Institutes of Environmental Health Sciences, Research Triangle Park, NC
NBAT	Virginia Military Institute	PhD	Post Doc, WFUSM
	Princeton University	PhD	MD, WFUSM
	Beijing Medical University	PhD	Research Associate, WFUSM
NUSC	Stanford University	PhD	Post Doc, Brown University, Rhode Island
	University of Florida	PhD	Oregon Health Sciences University, Portland, Oregon
	Guilford College	PhD	Post Doc, University of Michigan, Ann Arbor, Michigan
	Grinnell College	PhD	Post Doc, WFUSM
PHAR	Hampden-Sydney College	PhD	Post Doc, WFUSM
	Ohio Northern University	PhD	Post Doc, Oak Ridge Institute for Science & Education, FBI Academy, Quantico, VA
	University of Florida	PhD	Unknown
	Loyola College, Maryland	PhD	Post Doc, Location Unknown
	Loyola College, Maryland	MS	Lab Tech, WFUHS
PHYS	Florida State University	PhD	Post Doc, University of Iowa College of Medicine, Iowa City, IA

**TABLE 14. FINANCIAL AID
1997-1998 TO 2003-2004**

REYNOLDA CAMPUS PROGRAMS

<u>Year</u>	<u>97-98</u>	<u>98-99</u>	<u>99-00</u>	<u>00-01</u>	<u>01-02</u>	<u>02-03</u>	<u>03-04</u>
<u>Tuition</u>	16,300	17,150	18,000	19,800	20,790	22,200	23,310
<u>Stipend (10 months, *12 months)</u>							
Fellowship	4,000	4,000	4,000	4,000	4,000	4,000	4,000
MTF *	4,000 *	4,000 *	4,000 *	4,000 *	6,000	6,000	6,000 *
MTF (min) *	8,000 *	8,000 *	8,000 *	8,000 *	8,000	8,000	8,000 *
Dean's Assistantship					17,000	17,500	17,500
Dean's Assistantship-BIO, PHY							17,500
Dean's Assistantship-CHM							19,500 *
BIO *	12,000 *	12,500 *	12,500	13,000	13,500	14,000	14,000
CHM *	13,500 *	14,000 *	14,500 *	15,000 *	15,500 *	16,000 *	17,500 *
PHY *	11,500 *	12,500 *	13,000 *	13,500	14,000	14,500	14,500
ACC	8,000	6,000	6,000	6,000	6,000	6,000	6,000
CSC, MTH	8,500	8,500	9,000	9,500	9,500	10,000	10,000
HES	7,000	8,000	8,000	8,500	8,500	8,500	8,500
PSY	8,000	8,000	8,000	8,500	8,500	8,500	8,500
CNS, COM, EDU, ENG, REL	7,000	7,000	7,000	7,000	8,000	8,000	8,000

BIOMEDICAL SCIENCES PROGRAMS

<u>Tuition#</u>	16,600	17,450	18,300	20,100	21,090	22,500	23,610
------------------------	--------	--------	--------	--------	--------	--------	---------------

Stipend (12 months)

ALL PROGRAMS

15,000 15,000 15,500 + 16,000 + 16,500 + 18,500+ 20,000+

Includes summer tuition of \$300 per year

+ Plus contribution to health insurance premium

(98-99, \$600; 99-00, \$750; 00-01, \$900; 01-02, \$900; 02-03, \$900; 03-04, \$1,200)

**TABLE 15. SOURCES OF FINANCIAL AID
1997-1998 TO 2003-2004**

REYNOLDA CAMPUS PROGRAMS

<u>Year</u>	<u>97-98</u>	<u>98-99</u>	<u>99-00</u>	<u>00-01</u>	<u>01-02</u>	<u>02-03</u>	<u>03-04</u>
Assistantships	116	112	110	126	125	133	142
William Randolph Hearst Minority Assistantship					1	1	2
Dean's Fellowships (PhD programs)				3	3	3	
Educators						7 ⁽²⁾	15
Fellowships	53	52	37	18	20	31	32
Scholarships/FT (#external support, of total)	104 (20)	90 (15)	107 (26)	120 (22)	96 (22)	99 (34)	113 (37)
Scholarships/PT	18	15	15	9	9	10	7
One-Half Scholarships						33 ⁽²⁾	32
Total with support	291	269	269	276	254	317	345
Self-Support	153	172	131	123	143	86	106
TOTALS	444	441	400	399	397	403	451
% Students receiving some financial aid	65.5	61.0	67.2	69.2	63.6	78.6	76.5

(1) Financial aid for Accountancy graduate student (5th year) started

(2) Counted as Self-Support prior to 2002-03

**TABLE 15 (CONT). SOURCES OF FINANCIAL AID
1997-1998 TO 2003-2004**

BIOMEDICAL SCIENCES PROGRAMS

<u>Year</u>	<u>97-98</u>	<u>98-99</u>	<u>99-00</u>	<u>00-01</u>	<u>01-02</u>	<u>02-03</u>	<u>03-04</u>
<u>Graduate School Support</u>							
Grad Fellowships	56	56	60	67	68	66	69
Dean's Fellowships	4	0	0	0	0	2	2
Scholarships/FT						4	10
<u>Other Departmental Sources</u>							
Res/Dev Funds	1	0	1	1	11	7	3
Total	61	56	61	68	79	79	84
<u>External support</u>							
Research Grants	44	35	42	43	43	65	100*
Training Grants	21	39	42	40	47	45	37
NRSA/NSF/HH/US Army/Packard/AHA/PG	4	10	10	12	10	11	13
Total	69	84	94	95	100	121	150
Total with support	130	140	155	163	179	200	234
% Students with external support	53.1	60.0	60.6	58.3	56	61	64
Self-Support/unclass	36	30	16/12	17/7	20/9	17/22	7/22**
TOTALS	166	170	183	187	208	239	270
% Students receiving some financial aid	78.3	82.3	84.7	87.2	86	84	87

*Includes 13 Biomedical Engineering Students in Virginia Tech Joint Program

**Unclassified includes 10 PREP Scholars, 2 Post Docs, 6 MDs, and 4 Other

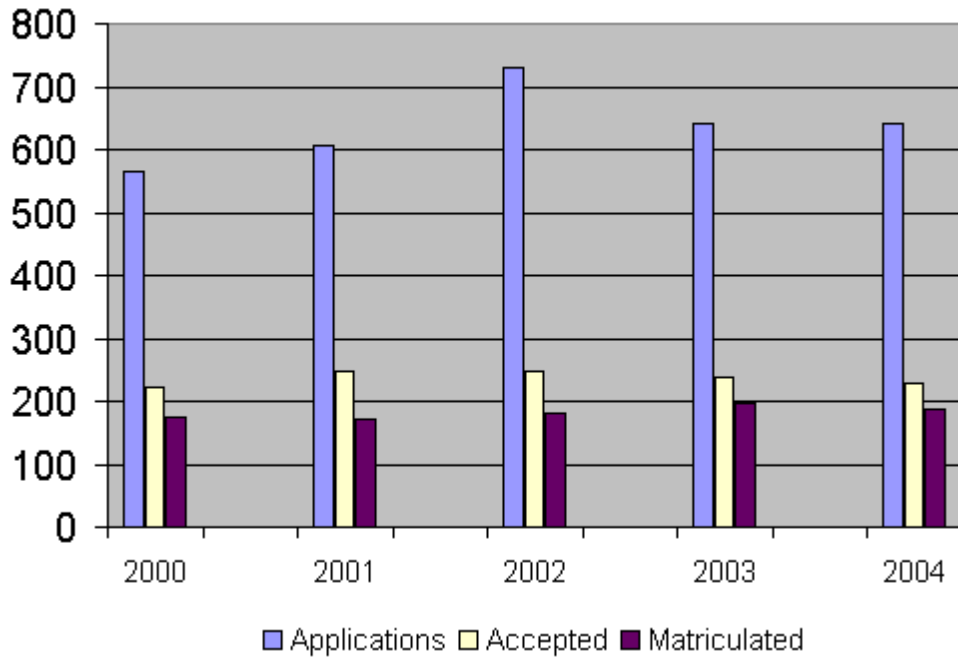
ADDENDUM

Selected Tables with information in graphical format.

**TABLE 2. APPLICATION STATISTICS
2000-2004**

REYNOLDA CAMPUS PROGRAMS

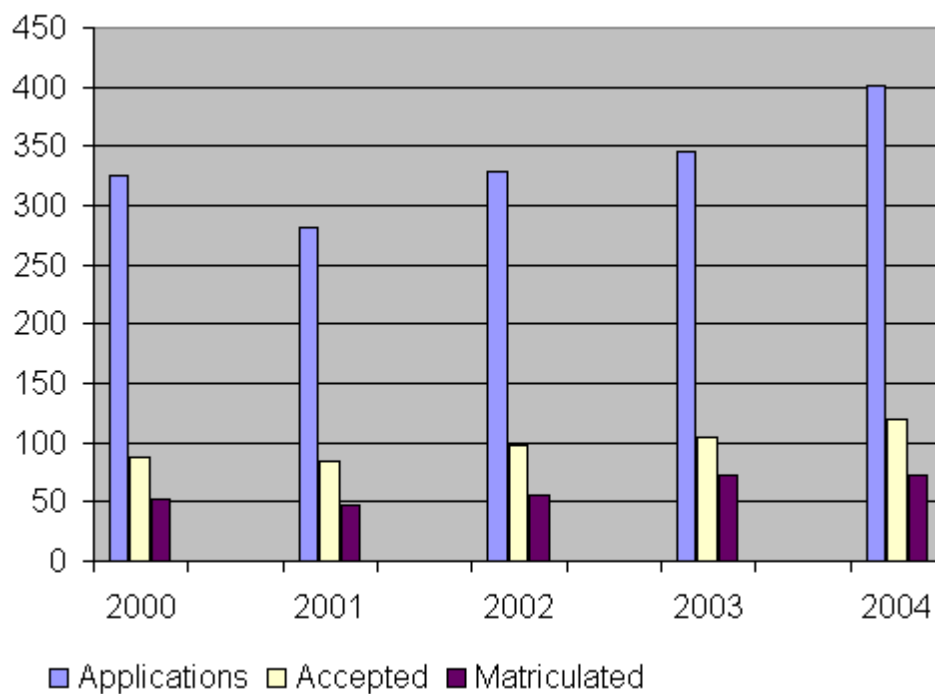
Year	Applications	Accepted	Matriculated
2000	564	221	174
2001	607	247	171
2002	729	248	181
2003	640	239	198
2004	642	228	186



**TABLE 2 (CONT). APPLICATION STATISTICS
2000-2004**

BIOMEDICAL SCIENCES PROGRAMS

Year	Applications	Accepted	Matriculated
2000	325	87	52
2001	282	85	47
2002	329	98	55
2003	346	105	73
2004	401	120	72



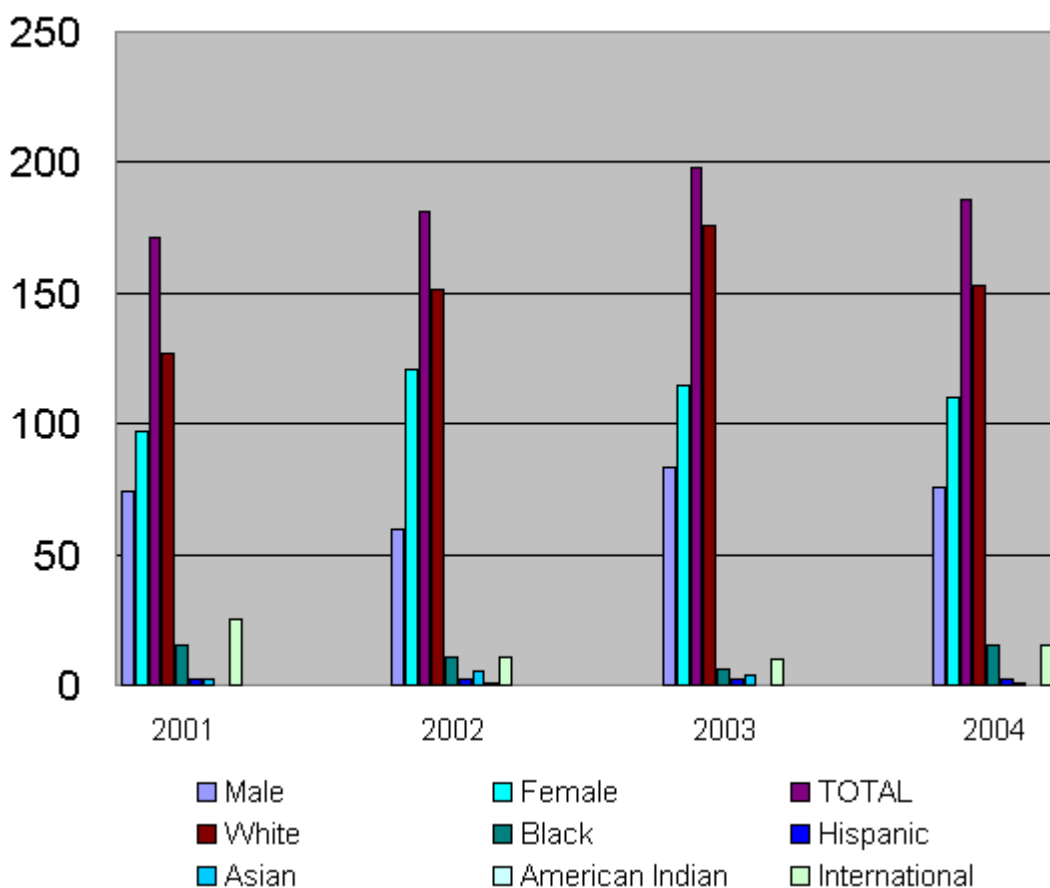
**TABLE 3. STUDENT PROFILE, MATRICULANTS
FALL 2001 TO FALL 2004**

REYNOLDA CAMPUS PROGRAMS

Year	Male	Female	TOTAL	White	Black	Hispanic	Asian*	American Indian	International#
2001	74	97	171	127	15	2	2	0	25
2002	60	121	181	151	11	2	5	1	11
2003	83	115	198	176	6	2	4	0	10
2004	76	110	186	153	15	2	1	0	15

*U.S. Address, Asian Ethnicity

#Non-U.S. Address, Ethnicity not checked



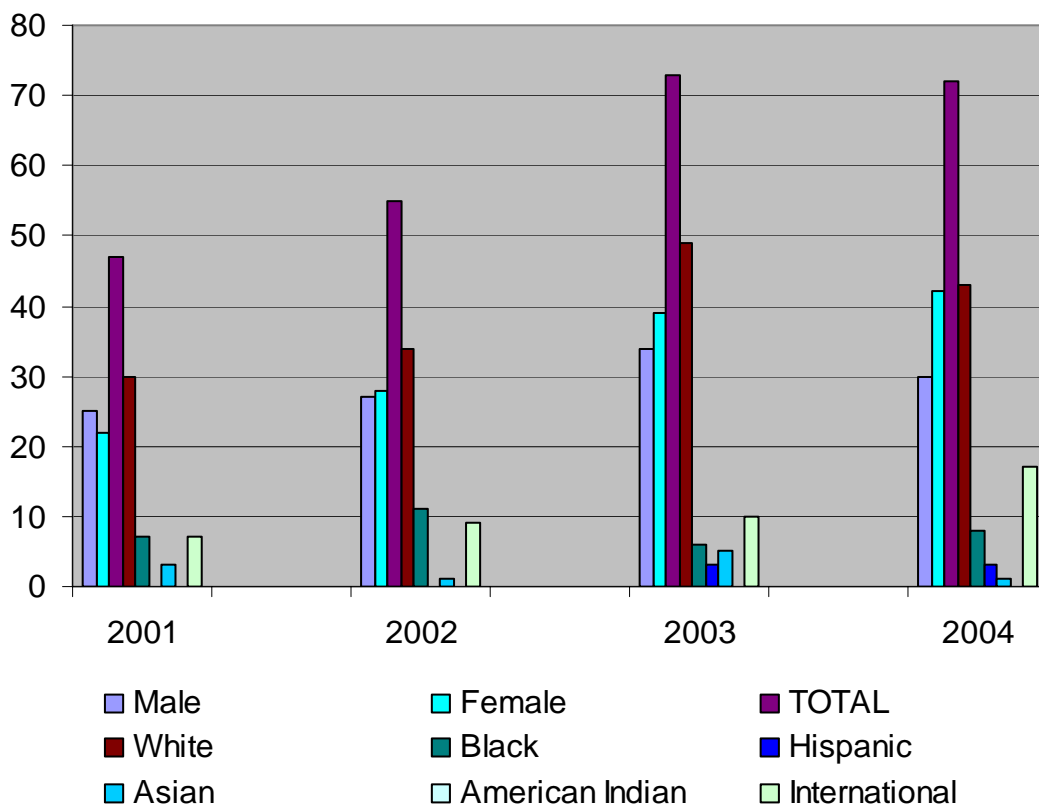
**TABLE 3 (CONT). STUDENT PROFILE, MATRICULANTS
FALL 2001 TO FALL 2004**

BIOMEDICAL SCIENCES PROGRAMS

Year	Male	Female	TOTAL	White	Black	Hispanic	Asian*	American	
								Indian	International#
2001	25	22	47	30	7	0	3	0	7
2002	27	28	55	34	11	0	1	0	9
2003	34	39	73	49	6	3	5	0	10
2004	30	42	72	43	8	3	1	0	17

*U.S. Address, Asian Ethnicity

#Non-U.S. Address, Ethnicity not checked



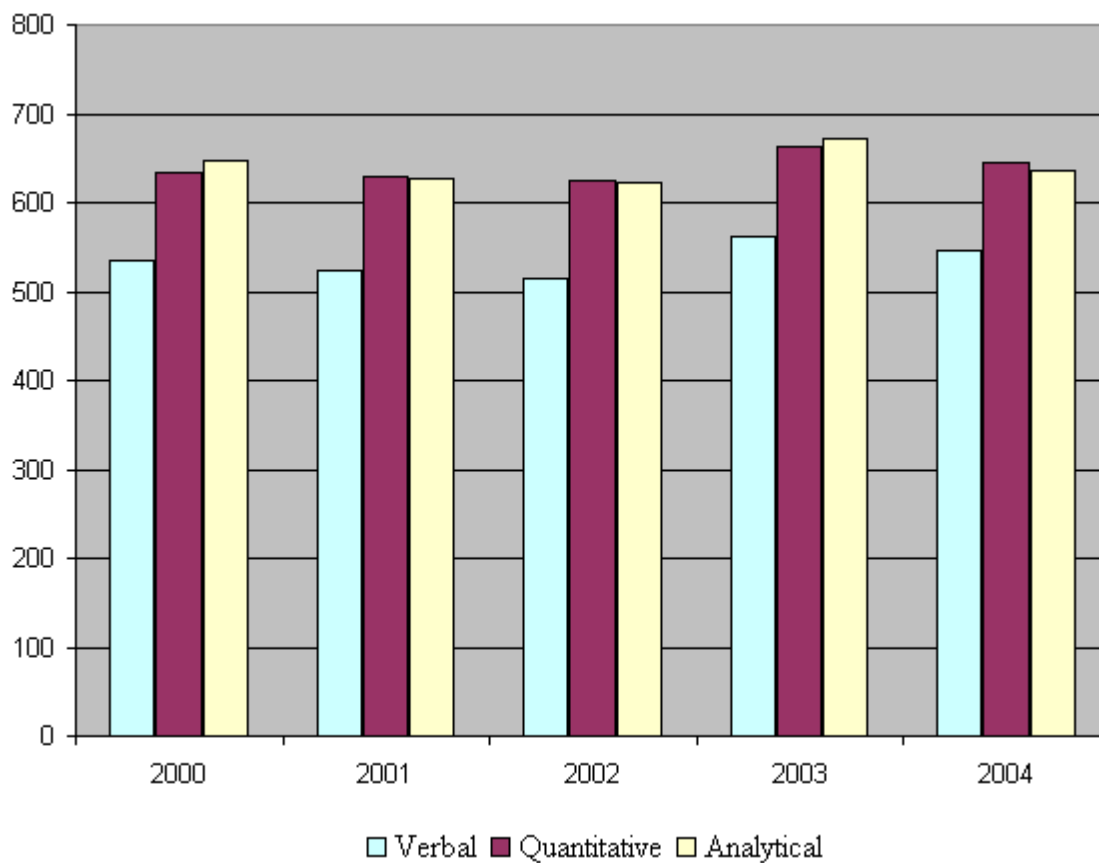
**TABLE 7. STANDARDIZED TEST SCORES FOR MATRICULATED STUDENTS
GRADUATE RECORD EXAMINATION (GRE) SCORES**

REYNOLDA CAMPUS PROGRAMS

Year (Fall)	Verbal	Quantitative	Analytical
2000	535	634	647
2001	523	630	627
2002	515	624	622
2003	561	662	673
2004	546	645	637

National mean all takers:

2000-2003	470	598	4.2
-----------	-----	-----	-----



**TABLE 7 (CONT). STANDARDIZED TEST SCORES FOR
MATRICULATED STUDENTS
GRADUATE RECORD EXAMINATION (GRE) SCORES**

BIOMEDICAL SCIENCES PROGRAMS

Year (Fall)	Verbal	Quantitative	Analytical
2000	531	660	667
2001	517	635	640
2002	525	646	621
2003	516	658	652
2004	503	670	651

National mean all takers:

2000-2003	470	598	4.2
-----------	-----	-----	-----

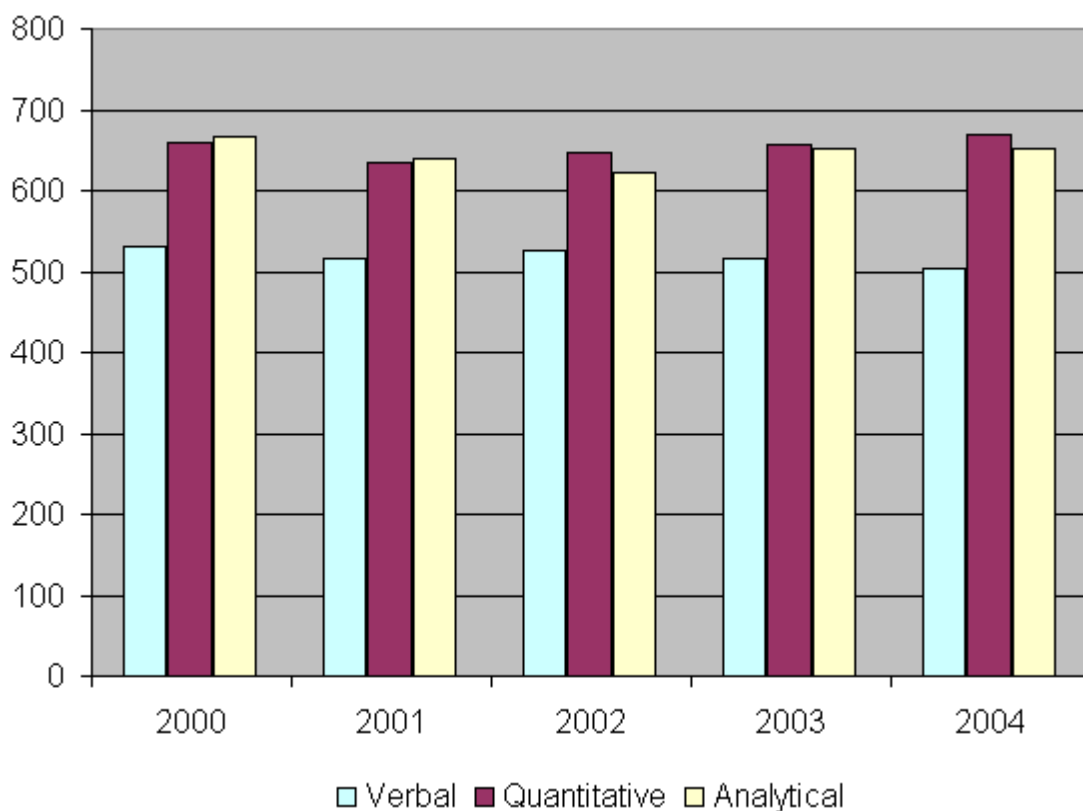


TABLE 7 (CONT). STANDARDIZED TEST SCORES FOR MATRICULATED STUDENTS
GRADUATE MANAGEMENT ADMISSIONS TEST (GMAT) SCORES

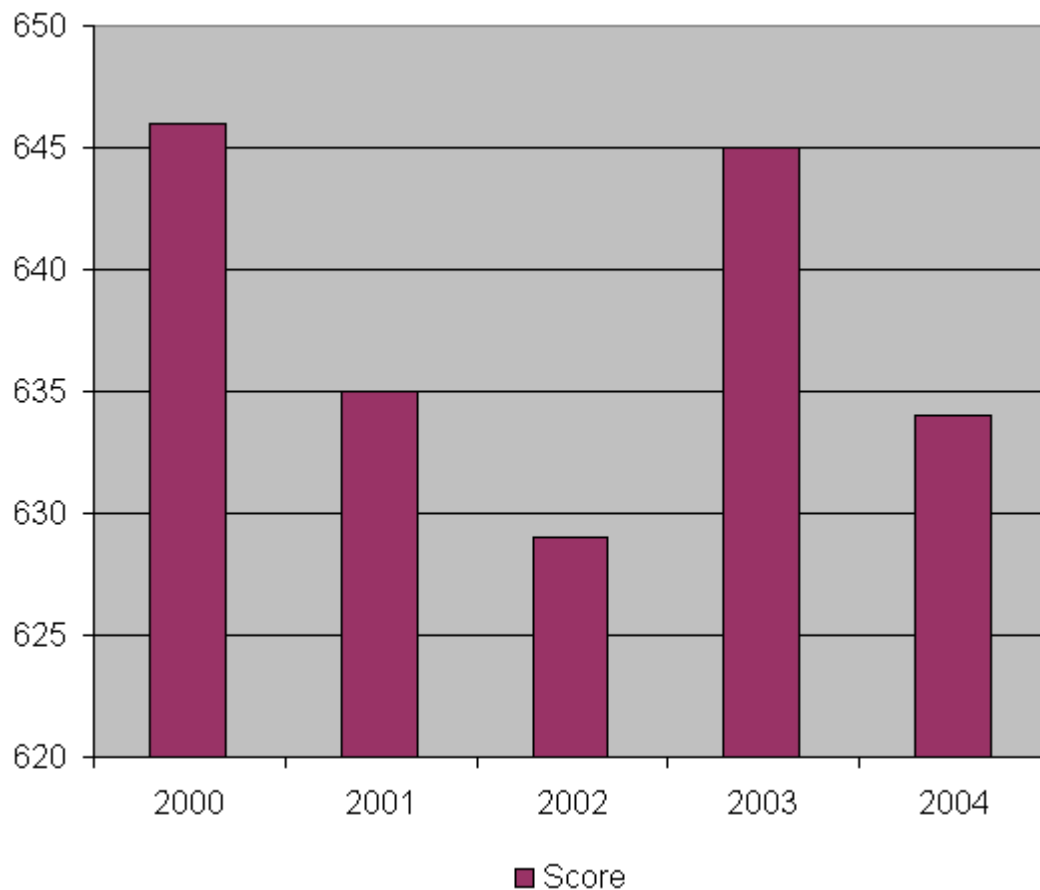
ACCOUNTANCY PROGRAM

Year (Fall)	Score	(%)*
2000	646	(84%)
2001	635	(81%)
2002	629	(80%)
2003	645	(81%)
2004	634	(79%)

National Mean (50%), all takers:

2000-2002 528

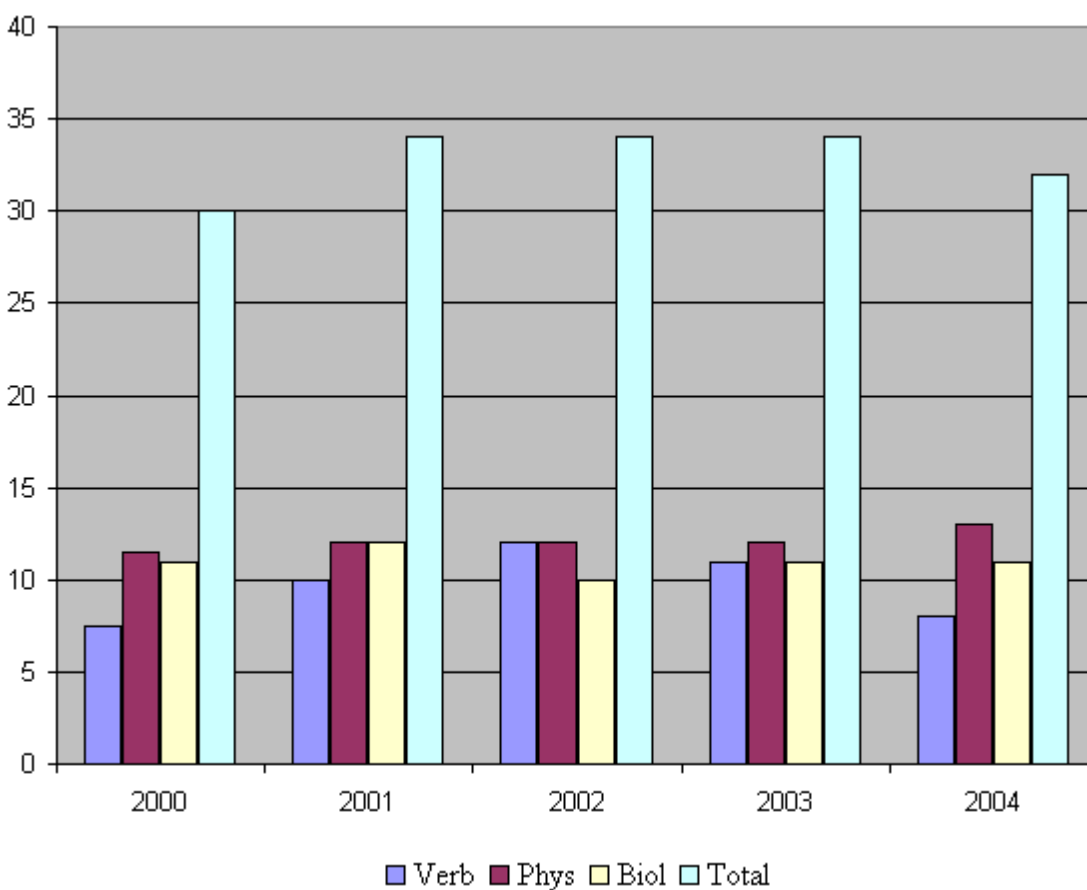
*Percent of examinees scoring lower than stated score



**TABLE 7 (CONT). STANDARDIZED TEST SCORES FOR MATRICULATED STUDENTS
MEDICAL COLLEGE ADMISSIONS TEST (MCAT) SCORES**

MD/PhD PROGRAM

Year (Fall)	Verb	Phys	Biol	Total
2000	7.5	11.5	11	30
2001	10	12	12	34
2002	12	12	10	34
2003	11	12	11	34
2004	8	13	11	32

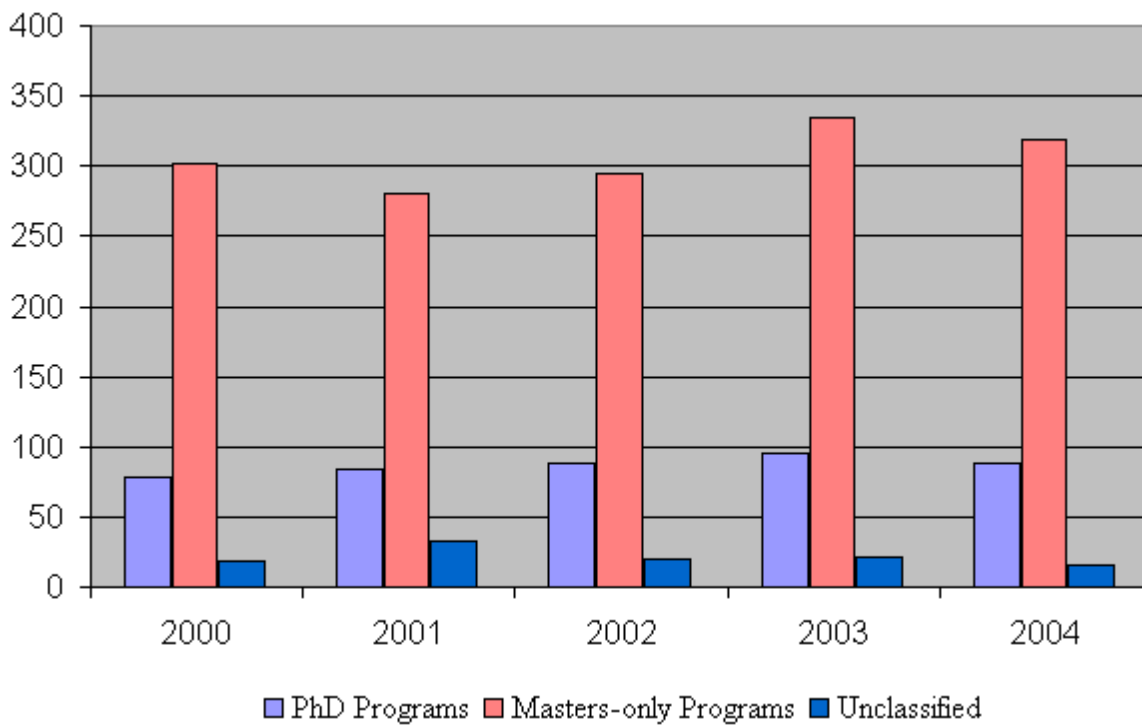


**TABLE 8. STUDENT ENROLLMENT
FALL 2000 TO FALL 2004**

REYNOLDA CAMPUS PROGRAMS

	2000	2001	2002	2003	2004
PhD Programs	78	84	88	96	88
Masters-only Programs*	302	280	295	334	319
Unclassified	19	33	20	21	15
TOTAL	399	397	403	451	422

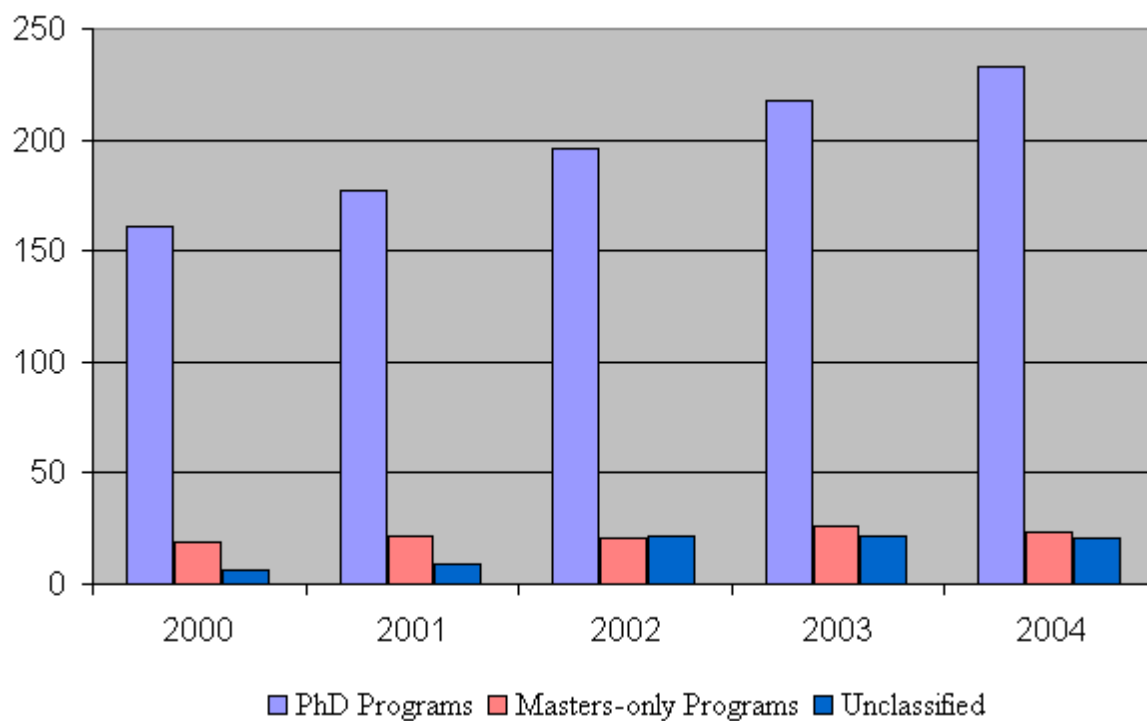
*Masters-only Programs do not
include 4th year Accountancy students



**TABLE 8 (CONT). STUDENT ENROLLMENT
FALL 2000 TO FALL 2004**

BIOMEDICAL SCIENCES PROGRAMS

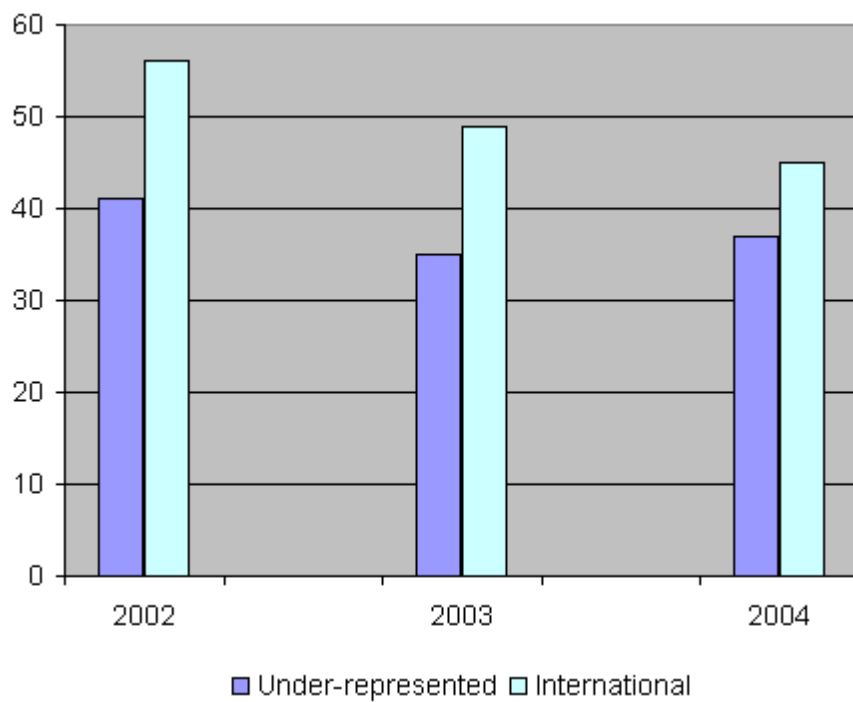
	2000	2001	2002	2003	2004
PhD Programs	161	177	196	218	233
Masters-only Programs	19	22	21	26	23
Unclassified	6	9	22	22	21
TOTAL	186	208	239	266	277
TOTAL (ALL PROGRAMS)	585	605	642	717	699



**TABLE 9. STUDENT PROFILE, TOTAL ENROLLMENT, DEGREE-SEEKING STUDENTS
FALL 2002 TO FALL 2004**

REYNOLDA CAMPUS PROGRAMS

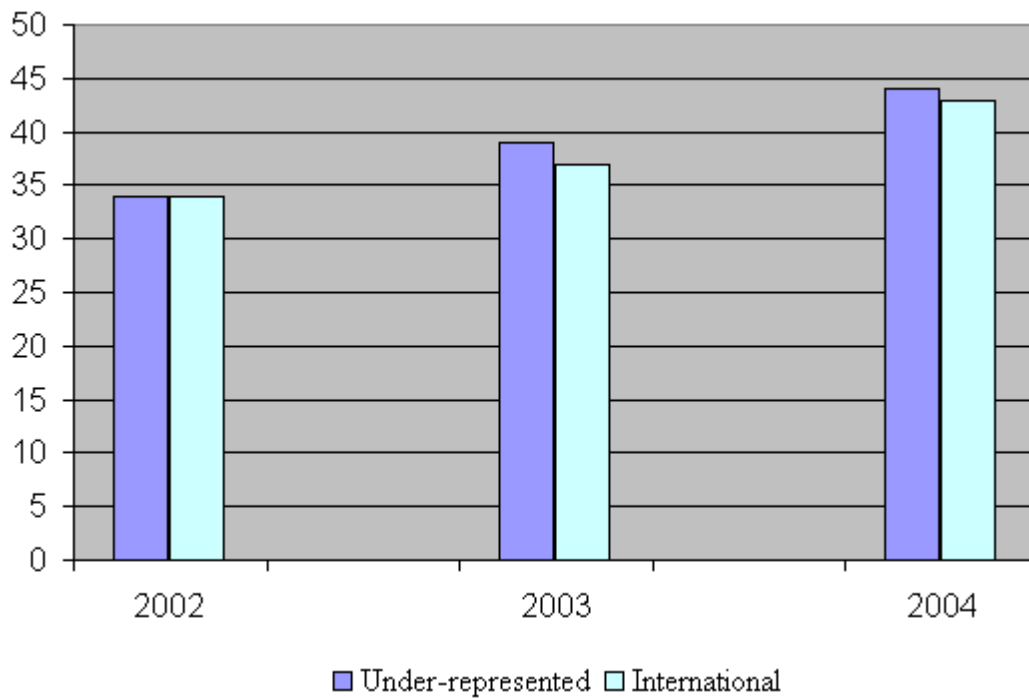
	Under-represented	International
2002	41	56
2003	35	49
2004	37	45



**TABLE 9 (CONT). STUDENT PROFILE, TOTAL ENROLLMENT,
DEGREE-SEEKING STUDENTS
FALL 2002 TO FALL 2004**

BIOMEDICAL SCIENCES PROGRAMS

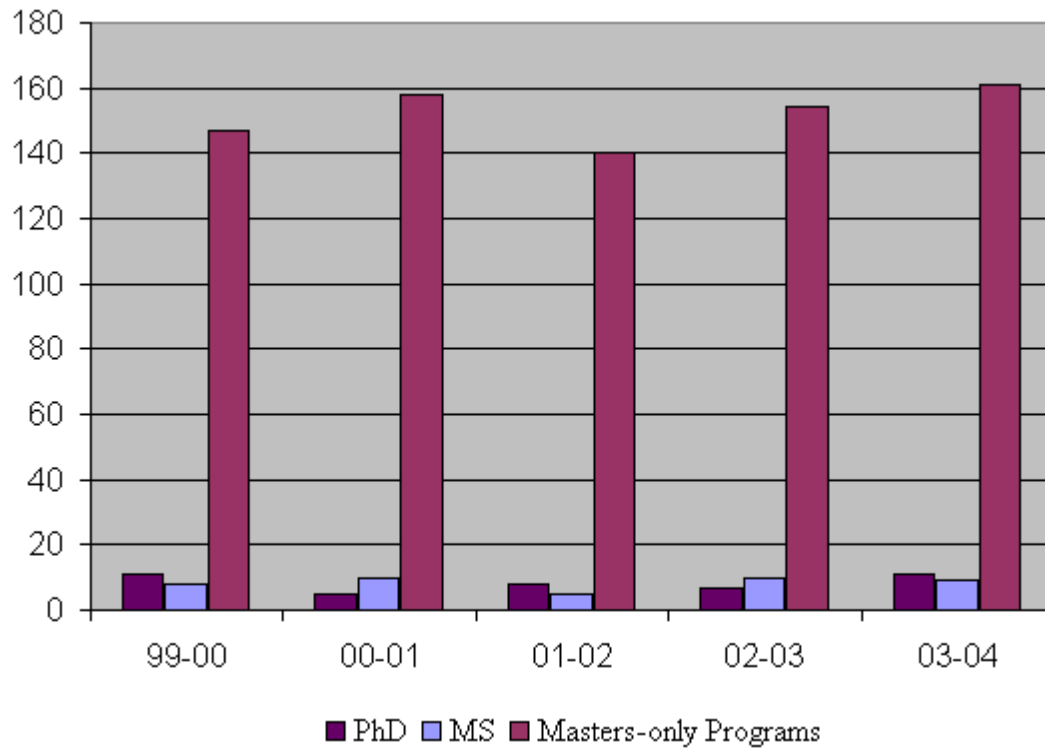
	Under-represented	International
2002	34	34
2003	39	37
2004	44	43



**TABLE 11. DEGREES AWARDED
1999-2000 TO 2003-2004**

REYNOLDA CAMPUS PROGRAMS

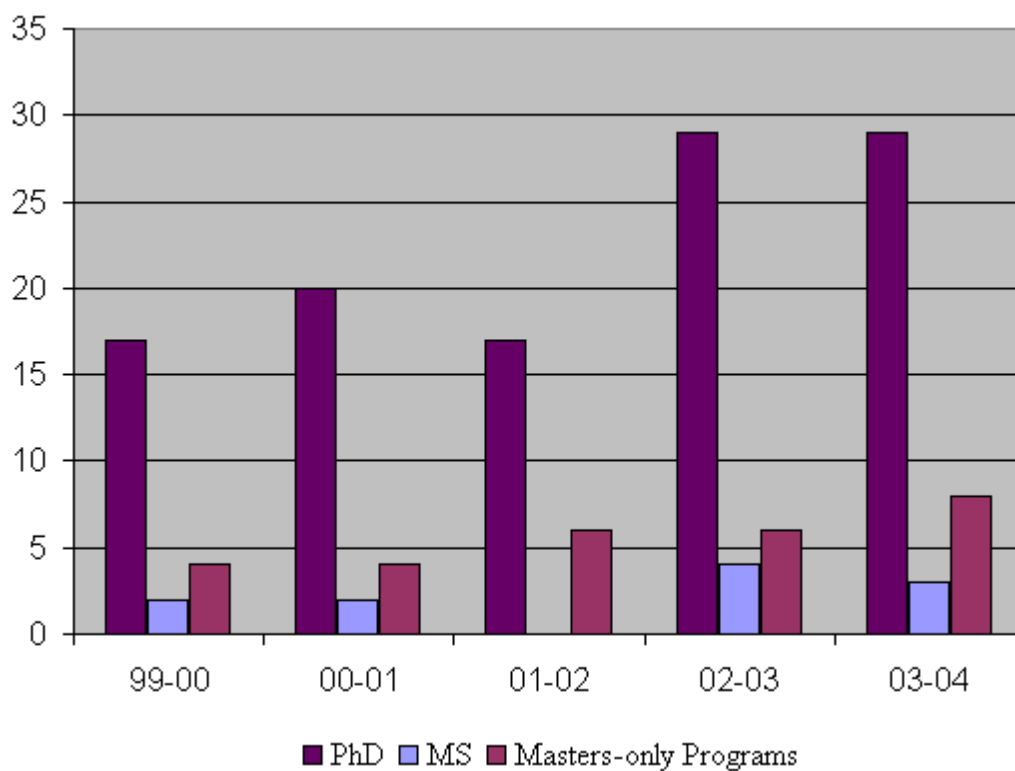
	99-00	00-01	01-02	02-03	03-04
PhD	11	5	8	7	11
MS	8	10	5	10	9
Masters-only Programs	147	158	140	154	161
TOTAL	166	173	153	171	181



**TABLE 11 (CONT). DEGREES AWARDED
1999-2000 TO 2003-2004**

BIOMEDICAL SCIENCES PROGRAMS

	99-00	00-01	01-02	02-03	03-04
PhD	17	20	17	29	29
MS	2	2	0	4	3
Masters-only Programs	4	4	6	6	8
TOTAL	23	26	23	39	40



**TABLE 11 (CONT). DEGREES AWARDED
1999-2000 TO 2003-2004**

ALL PROGRAMS

	99-00	00-01	01-02	02-03	03-04
PhD	28	25	25	36	40
MS	10	12	5	14	12
Masters-only Programs	151	162	146	160	169
TOTAL	189	199	176	210	221

