

GRADUATE SCHOOL *of* ARTS AND SCIENCES

ANNUAL REPORT 2002-2003



WAKE FOREST
UNIVERSITY
GRADUATE SCHOOL *of*
ARTS AND SCIENCES



GRADUATE SCHOOL *of*
ARTS AND SCIENCES

Annual Report
2002 - 2003

TABLE OF CONTENTS

	Page
MISSION STATEMENT	3
THE 2002-2003 YEAR IN REVIEW	4
PROJECTIONS FOR THE 2003-2004 YEAR.....	16
APPENDIX.....	18
Administration, Graduate School of Arts and Sciences.....	18
Standing Committees of the Graduate School	18
Graduate Faculty Representatives.....	21
Tables.....	22
1. Graduate Programs at Wake Forest University, 2002-2003	22
2. Application Statistics, 1991-2003	23
3. Student Profile, Fall 2001-Fall 2003.....	24
Applicants, Accepted and Matriculants	
4. Student Profile, Demographics, Fall 2001-Fall 2003	25
Applicants and Matriculants	
5. Standardized Scores and Grade Point Averages (GPA), Fall 2001-Fall 2003	27
Applicants, Accepted and Matriculants	
6. Standardized Test Scores for Matriculated Students	28
7. Student Enrollment, Fall 1995-Fall 2003.....	30
8. Student Profile, Total Enrollment, Degree-Seeking Students, Fall 2002, 2003	32
9. International Student Profile, Fall 2002, 2003	33
10. Degrees Awarded, 1995-1996 to 2002-2003	35
11. Placement, 2002-2003.....	37
12. Financial Aid, 1995-1996 to 2002-2003	44
13. Sources of Financial Aid, 1996-1997 to 2002-2003	45
Addendum.....	47
1. Application Statistics, 1999-2003	48
2. Student Profile, Fall 2001-Fall 2003, Matriculants	50
3. Standardized Test Scores for Matriculated Students	52
4. Student Enrollment, Fall 1999-Fall 2003.....	56
5. Student Profile, Total Enrollment, Degree-Seeking Students, Fall 2002-Fall 2003	58
6. Degrees Awarded, 1998-1999 to 2002-2003	60

MISSION STATEMENT

“The Graduate School, operating within the framework of these principles (of Wake Forest University), seeks to provide a community of faculty and advanced students dedicated to teaching, research and productive scholarship. Through graduate programs in the arts and sciences and the basic medical sciences, an effort is made to expand the frontiers of knowledge and to keep abreast of man’s understanding of the rapidly changing human environment. As a significant feature of the educational process, students are encouraged to develop initiative, resourcefulness and responsibility required of those who become independent intellectual leaders in their chosen fields of endeavor.”

From the Statement of Purpose, Bulletin of Wake Forest University Graduate School of Arts and Sciences, 2002-2003, page 20.

THE 2002-2003 YEAR IN REVIEW

Administration

On June 30, 2003, Pearl G. Lawrence, Registrar and Coordinator of the Biomedical Sciences program in the Graduate School of Arts and Sciences, retired from the Wake Forest University Medical Center. Pearl began working in the Department of Anatomy of the (at that time) Bowman Gray School of Medicine in 1979, assuming her position in the Graduate School in 1983. During the following twenty years, Pearl touched the lives of many people, serving as advisor, confidante and friend to graduate students and faculty. Pearl probably read more dissertations during that twenty-year period than most faculty members will do in their careers at Wake Forest. She enforced the rules of the Graduate School even-handedly and always with compassion and understanding. Although now retired from the Graduate School, Pearl's presence will be felt for many years to come. The faculty, administration and staff of the Graduate School take this opportunity to thank Pearl for all she has contributed to the School, Medical Center and University. We wish her well in her retirement.

On July 1, 2003, Susan Pierce, who had served during the year as Administrative Assistant in the Biomedical Sciences Program was promoted to the Registrar and Coordinator position. Kelley Reavis was hired to fill Susan's position. On the Reynolda campus, Carol DiGiantomasso was promoted to Admissions Coordinator, Wanda Duncan (part-time) replaced Dara Hahn and Sheila White (part-time) replaced June Vitale. The administrative personnel of the Graduate School of Arts and Sciences are listed in the Appendix.

Once again this year, many faculty members, staff of other administrative offices and students, including several undergraduates who worked on a part-time basis in the Reynolda campus office, assisted the Graduate School administration. Faculty and students served on standing committees of the Graduate School and represented the School on University committees and many faculty members served on students' master's and doctoral thesis and dissertation committees. The service provided by these individuals is essential for the conduct of the graduate program at the University; they are all appreciated and thanked for their service. Also, the senior leadership of the University continued to be supportive of the Graduate School, both financially and through their encouragement.

To all who assist each year in promoting excellence in graduate education at Wake Forest, a sincere Thank You!

Active graduate programs for 2002-2003 are listed in the Appendix, Table 1.

Graduate School and University Committees

The **Graduate Council** met monthly except for December during the academic year. The Credentials, Curriculum and Policy Committees of the Council reviewed nominations to the graduate faculty, course changes, additions and deletions and policy issues respectively. The Credentials Committee also served as the Nominations Committee, proposing faculty for election to the Council and for Graduate School representation on the University Senate for 2003-2004. It was agreed that the electronic submission of theses and dissertations would be open to all programs for the 2002-2003 year. A proposal for MTA/MTF students to participate in the Hooding and Awards Ceremony was discussed and approved. Since these students do not complete their requirements until June or July they will not be allowed to participate in the University Commencement Ceremony until they have completed all requirements for the MAED degree. A revised policy for dismissal from the Graduate School was approved and forwarded to the Graduate Faculty for discussion. The Policy Committee also began work on the development of an Honor Code for the Graduate School. Discussions will continue during 2003-2004. The master's degree program in Counseling will be separated from the Department of Education coincident with the formation of the Department of Counseling on July 1, 2003. A Master of Arts degree will replace the current MAED degree for Counseling.

The **Graduate Faculty** met in November 2002 and April 2003. Dean Melson's presentation at the fall meeting was entitled "Partnerships". Several partnerships that have been developed during the year were discussed in addition to those currently in existence, such as the MD/PhD and PhD/MBA programs. Also included were the NIH-funded Bridge Program with North Carolina Central University, the Florida A&M Feeder Scholars Program, the relationship with the Louis Stokes Alliance for Minority Participation (LSAMP), the Virginia Tech/WFU Biomedical Engineering Program and the potential NIH partnership program. At the spring meeting, Dean Melson discussed the "Financial Outlook for 2003-2004" in light of the level budget expected for the coming year. Policies for minimum grade requirements and dismissal from the Graduate School were approved by the faculty. A report from the Task Force on Bioethics was given at the spring meeting. The on-going discussions concerning a proposed master's degree program in bioethics were summarized. There were 454 members of the Graduate Faculty at the start of the 2002-2003 academic year.

The **Biomedical Sciences Graduate Committee** met three times during the year. Improvements to the web-based curriculum website were presented at the August 2002 meeting; faculty members were encouraged to increase the number of web-based courses offered to graduate students. At the January meeting, Ms. Helen Dowling, Assistant Director, Alumni Affairs discussed fund raising for the Graduate School. A proposal for calculation of effort for graduate student mentoring was discussed and changes proposed. At the March meeting, Kevin Brewer gave a presentation on tracking teaching hours for effort reporting.

The **Task Force on Bioethics** continued to meet during the year, with the discussions focusing on the development of a master's degree program in bioethics. (The membership of the Task Force is presented in the Appendix; Dean Melson continued to

co-chair the Task Force with Dr. Sally Shumaker.) The Task Force sponsored “A Seminar Series in Bioethics” that was partly supported financially by a \$10,000 grant from the WFU Fund for Ethics and Leadership. (Additional funding was provided by the Graduate School and the Office of Intercampus and Community Development.) Five nationally and internationally renowned experts in bioethics were brought to the University during the fall and spring semesters. Each visit involved a formal presentation by the expert with opportunities for informal discussions either before or after the presentation and at other venues. Seminars were held on both the Reynolda and Bowman Gray campuses of the University. Students, faculty and staff attended the formal presentations and were also involved in informal discussions. During the year, a proposal entitled “Training Bioethicists for the Future” was approved for funding by the Fund for Ethics and Leadership (\$10,000) to support a workshop to be held during the 2003-2004 year.

The **Board of Visitors of the College and Graduate School of Arts and Sciences** held fall (September 26-27, 2002) and spring (February 27-28, 2003) meetings on the Reynolda campus. The members of the Graduate School Advisory Committee (GSAC) of the Board are listed in the Appendix. The theme for the fall was “International Students at Wake Forest: Where Do We Go From Here? Part II” and was a continuation of the discussion from the spring 2002 meeting. Dean Melson presented a follow up to the discussion from the spring meeting and provided enrollment numbers for international and underrepresented students for fall 2002. He also participated in the session dealing with “Recruitment of International Students: Legal Issues, Marketing, Admissions and Financial Aid.” The spring meeting focused on an undergraduate student life theme “How do we develop a more creative, symbiotic relationship between learning in and outside of the classroom?” The participation of the members of the Board of Visitors and the advice that they provide is deeply appreciated by the administration of the Graduate School.

Graduate School Events

The fourth annual **Graduate School Hooding and Awards Ceremony** was held on May 18, 2003 in Brendle Recital Hall on the Reynolda campus. Dr. Max Gomez ('78 PhD, Anatomy) Health and Science Editor, WNBC “NewsChannel4” in New York City, was the distinguished invited speaker. He discussed “Your Debt to Society” in his address to the graduates and was warmly received by the large audience of graduates, family, friends and faculty in attendance. PhD graduates were hooded by their advisors; graduates receiving MA, MS, MAED and MALS degrees were hooded by Associate Dean Solano. Dr. Jack Wilkerson, Dean of the Wayne Calloway School of Business and Accountancy, hooded the Master of Science in Accountancy (MSA) candidates. The Outstanding Doctoral Student Award was presented to Dr. Anita McCauley, Department of Neurobiology and Anatomy; Emily Brewer from the Department of English received the Outstanding Master’s Student Award. The Graduate Student Association selected Dr. Mark Wallace, Department of Neurobiology and Anatomy, as the recipient of the Faculty Excellence Award. Graduating students who received major awards during their tenure at Wake Forest were recognized. The ceremony was again transmitted over closed-circuit TV to an overflow crowd in an adjacent room of the Scales Fine Arts Center. This year, tickets provided to the graduates were limited to a maximum of three each. In

future years, the Graduate School must look for a larger venue to hold this event, since many family and friends of the graduates were unable to attend due to the space limitations.

At the **WFU Commencement Ceremony** on May 19, two hundred ten graduates of the 2002-2003 year received their diplomas. Also at the ceremony, Eric N. Olson ('81 PhD, Biochemistry) received an honorary Doctor of Science degree from Wake Forest University. Dr. Olson was the distinguished invited speaker at the first Graduate School of Arts and Sciences Hooding and Awards Ceremony in 2000.

The sixth **Graduate School Forum** "The Struggle to have it all Professionally and Personally" was held on the Bowman Gray campus on January 31, 2003. The keynote speaker was Dr. Emily Toth, Robert Penn Warren Professor of English at Louisiana State University. Dr. Toth, as "Ms. Mentor", writes a monthly advice column for the *Chronicle of Higher Education's* Career Network. A panel discussion followed the presentation and was led by Dr. Michelle Naughton, Associate Professor, Department of Public Health Sciences. The panelists consisted of WFU alumni, Kristen Green Jordan (PhD '99 Pharmacology); James E. Jordan (PhD '99 Pharmacology); Robert T. Harger (PhD '96, NC State, MA '92 Mathematics); Mary Sorci-Thomas (PhD '84 Biochemistry) and Jay C. Strum (PhD '93 Biochemistry). Approximately one hundred students, postdoctoral fellows and faculty from both campuses attended the Forum. Some excellent advice was provided to the graduate students, especially in response to their questions. The Forum was very well organized by Drs. Solano and Naughton.

The third annual **Graduate Student Research Day** was held in the Benson Student Center on the Reynolda campus on April 4, 2003. Posters were submitted from sixty-three students in seventeen different departments and programs. The numbers of students and programs represented were the highest in the three years of the event. Attendance at Research Day was excellent with many graduate students and faculty from both campuses discussing the posters and exchanging ideas. Each presenter received a T-shirt commemorating the event and the GSA organized a reception in "Shorty's" on the Reynolda campus after the event. Research Day is one way that the Graduate School recognizes the excellent contributions in research that are made by the graduate students during "Graduate Student Appreciation Week." The eighth annual **Department of Education Research Forum** was held on December 11, 2002.

The ninth annual **Summer Research Opportunities Program** (SROP) sponsored by the Graduate School and funded by the School and through individual faculty research grants was held on the Bowman Gray campus in conjunction with the NIH supported **Excellence in Cardiovascular Sciences** (EICS) summer research program from May 29 to July 25, 2003. A total of twenty-six undergraduate students from many different schools participated in the two programs. A poster symposium, followed by lunch and the presentation of certificates of participation was held on the final day of the programs. The symposium was well attended by faculty and students from WFU together with family and friends of the programs' participants. The summer research programs provide the students with exposure to the research projects and faculty at the Medical Center and also serve as a source of potential graduate students for the biomedical sciences programs.

In addition to the SROP/EICS symposium described above, a research poster symposium was held on November 22, 2002 on the Bowman Gray campus in honor of four visiting **Louis Stokes Louisiana Alliance for Minority Participation (LS-LAMP)** students who were awarded the trip to WFU for winning their categories in Biology, Chemistry and Physics at the LS-LAMP Research Symposium in the fall of 2002. The students orally presented their research projects, attended the symposium and met with WFU faculty from their potential graduate programs of interest. A total of twenty-two WFU graduate students presented posters in the symposium.

Research poster presentations were also made by twelve **Post-Baccalaureate Research Education Program (PREP)** Scholars on June 13, 2003. Dr. Gary Gibbons presented a seminar for the PREP program scholars and others entitled “Cardiovascular Genomics: Implications for Abolishing Ethnic Disparities in Health.” The PREP completed its first year in 2003; it is funded by a training grant from the National Institute of General Medical Sciences. The program provides research training and academic enhancements for minority students interested in careers as biomedical scientists. Dr. Debra Diz is the director of both the EICS and PREP programs.

The **Graduate Student Association (GSA)** was very ably and actively led by Co-Chairs KerryAnn O’Connor (Physiology and Pharmacology) and John Wilkinson (Physics). The spring 5K race was held on April 6, 2003 and was very successful with greater participation than in previous years; \$300 was raised for donation to the Samaritan Ministries. The GSA organized fall and spring picnics for students, both of which were well attended. The GSA also volunteered at a Winston-Salem “Rock the Block” evening to raise awareness of the GSA within the community. The co-chairs attended the NAGPS Southeastern Regional Meeting in Raleigh where they exchanged ideas with representatives from other schools. Members of the GSA assisted with the Graduate Student Research Day.

The **Black Graduate Student Association (BGSA)** held its fourth Graduate and Professional School Forum on November 16, 2002. The Forum featured four workshops on preparing for graduate school and included a graduate school fair that was attended by several institutions, especially from across North Carolina (including WFU.) The event, which is organized and run by the BGSA, attracts potential underrepresented minority graduate and professional students to the University.

A retreat for discussion of the interdisciplinary **Consortium of Biological Chemistry and Physics (COBCAP)** was held in September 2002 at the Graylyn Conference Center. Faculty members from departments on both the Reynolda and Bowman Gray campuses participated in the discussion. It was agreed that COBCAP and the Graduate School would co-sponsor interdisciplinary seminar(s) during the year to bring faculty and students together to discuss topics of mutual interest. The first lecture was scheduled for spring 2003, but had to be rescheduled for fall 2003 due to travel difficulties of the speaker. The Graduate School will continue to seek opportunities to sponsor lectures of an interdisciplinary nature as part of an initiative to promote interdisciplinary research and graduate education opportunities.

Two **Visiting Scholar Tutorials** in the Biomedical Sciences Program were held during the year. The first brought Dr. Mary Jeanne Kreek, Professor and Head, Laboratory of the Biology of Addictive Diseases, Rockefeller University to the University. She held two tutorial sessions and presented a seminar “Opioids, Stress, SNPs and the Addictions” on April 16 and 17, 2003. The second involved Dr. Gerard Evan, Gerson and Barbara Bass Baker Distinguished Professor of Cancer Biology, Cancer Research Institute and Department of Molecular and Cellular Pharmacology, University of California, San Francisco. Dr. Evan presented one tutorial and a seminar entitled “Making and Breaking Cancers *In Vivo*” on June 5, 2003.

The College and Graduate School sponsored the sixth annual **Herbert McNeill Poteat Lecture** on November 4, 2002 in the Scales Fine Arts Center on the Reynolda campus. Dr. Dilip Kondepudi, Wake Forest Professor of Chemistry, discussed “The Enigma of Asymmetry” before a large audience.

Departmental Reviews and Program Changes

The **Department of Health and Exercise Science (HES)** was reviewed this year. This was the second review (after seven years) for HES. The review confirmed the high quality of the department’s faculty and programs. The major challenge facing the department at this time is the lack of dedicated and separate teaching and research space. The new Clinical Research Center is an invaluable addition to the department, although there are still unmet needs.

The **Master of Arts in Liberal Studies (MALS)** program was reviewed during the year for the first time. The review concluded that the program is a strong, thriving graduate program that offers a wide range of opportunities for graduate education to a non-traditional community of students who are not served by other programs. The program is very ably administered by Dr. Solano as Program Director and Wanda Duncan (part-time Administrative Coordinator) both of whom also have significant additional responsibilities in the Graduate School. The MALS Advisory Committee should be more involved in the administration of the program.

The joint **Virginia Tech-Wake Forest University** PhD and MS programs in **Biomedical Engineering** were approved by both the University of North Carolina Board of Governors for the State of North Carolina, (February 14) and the State Council on Higher Education for Virginia (March 19), allowing recruiting for fall 2003 matriculants to proceed. The final documents formalizing the Virginia Tech-Wake Forest University School of Biomedical Engineering and Sciences (SBES) were approved in June 2003. An SBES Governing Board (the Dean of the Graduate School at WFU is a permanent member of the Board) was formed and will hold its first meeting in fall 2003. A social event attended by faculty from WFU and Virginia Tech was held at Tanglewood Park on April 5.

The Wake Forest University **Counselor Education** program became the Department of Counseling on July 1, 2003. The Department will offer the Master of Arts degree (rather than the MAED degree) effective with the fall 2003 semester.

Recruiting

Graduate School staff attended **graduate and professional fairs** at Virginia Tech, Appalachian State University, Lenoir-Rhyne College, Duke University, Wake Forest University, UNC-Wilmington, East Carolina University and Elon University. Associate Dean Solano represented WFU at the fair held as part of the BGSA Forum in November. Dean Melson attended the Annual Biomedical Research Conference for Minority Students (ABRCMS) in New Orleans, LA, November 13-16, 2002 and made a presentation to LS-LAMP students at Southern University. He also attended the Florida A&M University (FAMU) Graduate Feeder Scholars Program Planning Conference in October 2002. At this conference, Dean Melson participated as the lead reactor in the session “The New GRE: Its Impact on Minorities” and gave a presentation “Graduate School and You” to student and faculty attendees. Dr. Debra Diz represented WFU at the LS-LAMP Research Conference in November 2002.

The **Biomedical Sciences Career Day** was held on October 4, 2002. Fifty-five students and faculty from seventeen institutions participated in the day’s activities. Two student attendees matriculated into the PREP program; nine applied for admission to BMS programs for fall 2003. Of these applicants, two matriculated into the Biochemistry and Molecular Biology program and two matriculated into the Molecular Medicine program. Career Day remains an effective way of introducing the BMS graduate programs to interested students and faculty.

The **Biomedical Sciences PhD interview weekend** was held March 6-8, 2003; seventy students attended. All PhD programs, except for Biomedical Engineering, participated in the interviews. The weekend continues to be an effective way of introducing students to the graduate programs at WFU and to publicizing the excellence of these programs.

Four separate days were set aside for **MD/PhD candidate interviews** during the fall and spring semesters. These interviews were coordinated with the School of Medicine interviews. The MD/PhD program continues to be able to offer tuition and stipend support through all years of study to two matriculating students per year. Due to budgetary restrictions, the plan to increase the number of supported students to four per year was not implemented.

Partnerships

Both the establishment of new, and the continuation of existing, partnerships were emphasized during the year. Formal and informal partnerships are important for effective publicizing of the graduate programs and for increasing the opportunities for recruiting some of the best available students. This is especially true for the recruitment of students who are traditionally underrepresented in the sciences and biomedical sciences. Participation in the **FAMU Graduate Feeder Scholars** program continued. An agreement with **Tennessee State University (TSU)** for WFU to be part of their Graduate Scholars Program was signed by Dean Melson and the President of TSU, Dr. James A. Hefner, during a visit by Dean Melson to the Nashville based school in June, 2003. Participation in the **“NCCU-WFU Biomedical Sciences Bridge Partnership”** continued, with students at NCCU being identified and taking classes offered by the

WFU Department of Physiology and Pharmacology. It is anticipated that the first student(s) completing the master's degree at NCCU and entering the WFU graduate program will occur for the 2004-2005 year. The relationship with the **LS-LAMP** program continued, with two students entering the summer research programs in 2003. Dr. Melson met with the Director of the **NC-LSAMP** program to discuss possible interactions between WFU and the members of the NC-LSAMP institutions. Dr. Melson continues to serve on the Research Infrastructure in Minority Institutions (RIMI) Advisory Committee for **Winston-Salem State University** (WSSU). A meeting of the Committee was held on May 7, 2003, when research presentations by WSSU faculty working in collaboration with WFU faculty were made. Such collaborations will increase opportunities for WSSU students to undertake graduate study at WFU. Several WSSU students participated in the summer research programs during 2003.

In the summer of 2003, the **Greater North Carolina Louis Stokes Alliance for Minority Participation (GNCLSAMP)** was formed. The Alliance consists of the following institutions: Appalachian State University (ASU), Barber Scotia College (BSC), Central Piedmont Community College (CPCC), East Carolina University (ECU), Lenoir-Rhyne College (LRC), Livingstone College (LC), Mount Olive College (MOC), Pitt Community College (PCC), Shaw University (SU), Wake Forest University (WFU), and Western Carolina University (WCU). ECU was designated as the fiscal agent for the Alliance. The goal of the Alliance is to more than double the graduation rate of underrepresented minorities in the science, technology, engineering and mathematics (STEM) disciplines at partner institutions and enhance students' preparation for graduate degree programs. Several meetings took place over the summer with the intent of submitting a grant proposal to NSF for funding under the LSAMP program in the fall of 2003. The contributing departments at WFU are: Biology, Chemistry, Computer Science, Mathematics and Physics.

A visit by the Rector and the Director of International Programs of **Bogor Agricultural University** (Indonesia) reaffirmed the partnership between WFU and the University. Two students from Bogor are currently in the MCPATH program. In addition, one student is currently in the PhD program in Chemistry and another will join that program in fall 2003. All students are junior faculty members in Indonesia. The discussion explored ways in which additional students from Indonesia could enter graduate programs at WFU.

With the formalization of the joint **Virginia Tech-Wake Forest University** graduate programs in biomedical engineering, students who were in the Virginia Tech and WFU programs in biomedical engineering and medical engineering respectively, were given the opportunity to become part of the joint program. Seventeen students from Virginia Tech and two students from Wake Forest opted to become students in the joint program.

Dr. Mary DeLong, Director, Graduate Program Partnerships at the **National Institutes of Health** (NIH), visited WFU on September 10, 2002 to discuss the possibility of developing a formal partnership between WFU and NIH in an area of mutual research interest. The NIH later underwent a reorganization of the program and additional discussions were delayed. These should be started again in the fall of 2003.

A meeting of interested parties from several Atlantic Coast Conference (ACC) schools took place in September 2002 to discuss the possibility of developing “**The Inter-Institutional Academic Collaborative (IAC) of the ACC.**” Dean Melson attended the meeting in Greensboro that was organized by Dr. David G. Brown (former Provost at WFU) and participated in discussions aimed at the development of a Traveling Scholars Program for students in PhD programs at the ACC schools. Agreement was reached later in the year. The IAC Traveling Scholars Program is scheduled to run, as a pilot program, through the 2003-2004 and 2004-2005 academic years. This program marks the first non-athletic collaboration in the ACC.

Admissions and Enrollment

Tables 2-6 present data for applicants and matriculants to the graduate programs on the Reynolda campus and to the Biomedical Sciences (BMS) programs. While the data are self-explanatory, some observations will be offered.

The numbers of **matriculants** into graduate programs on both campuses were at an all-time high. However, the number of BMS matriculants (73) includes seventeen students at Virginia Tech (VT) who elected to be part of the joint VT/WFU Biomedical Engineering program. For the Reynolda campus programs, the number of matriculants from North Carolina exceeded 60% for the second year. For the BMS programs, the percentage was ~36% for 2003, reflecting a steady decrease (from ~43%) over the past three years. For both campuses, North Carolina residents continue to make up the largest number (and percentage) of matriculants.

Standardized scores and GPA averages for applicants, accepted and matriculated students for the past three years are shown in Table 5 and for matriculated students over a period of twelve years in Table 6. Average fall 2003 matriculants scores are in the mid sixty to mid seventy percentile range when compared with all takers for verbal, quantitative and analytical (GRE) for programs on both the Reynolda campus and in the Biomedical Sciences programs. Matriculants to the master’s degree program in accountancy continue to average above the eightieth percentile on the GMAT examination. For the MD/PhD program, the combined score of 34 on the MCAT examination corresponds to greater than the ninetieth percentile of all MCAT takers.

Enrollment

For the first time, **total enrollment** in the Graduate School of Arts and Sciences (Table 7) exceeded seven hundred students (717) in fall 2003. Of this total, 674 were degree-seeking (314 in PhD programs, 360 in master’s programs) and 43 were unclassified students.

The **degree-seeking student profile** is presented in Table 8. In fall 2003, female students continued to outnumber males on both campuses (Reynolda: female 58%, male 42%; BMS: female 55%, male 45%). Underrepresented minority and international student enrollments decreased on the Reynolda campus from 2002. In fall 2003, 9.2% of domestic students were underrepresented minorities (8.1% of total enrollment); international students comprised 11.4% of total enrollment. In the BMS programs,

18.8% of domestic students were underrepresented minorities (16.0% of total enrollment); international students comprised 15.1% of total enrollment. Continued efforts must be made to increase the numbers of underrepresented minority students enrolled in graduate programs at WFU. International students continue to come from many countries across the world (Table 9). Most graduate programs have at least one enrolled international student.

Degrees Awarded and Placement

During the 2002-2003 year, two hundred ten (210) students were awarded graduate degrees (Table 10). Thirty-six PhD degrees were awarded, the highest number in one year. Twenty-nine of these degrees were awarded to students from the BMS programs. The time to degree (TTD) for the PhD recipients averaged just over 5 years, which continues to be an excellent time for graduation of WFU students when compared with the national TTD average for biosciences of ~6.5-7 years.

Table 11 shows the post-graduation plans for students who completed the Graduate School Exit Survey.

A **PhD Career Fair** was held on November 21, 2002 at the North Carolina Biotechnology Center (NCBC) in Research Triangle Park. Dr. Melson represented WFU in planning the Fair, together with representatives from the Career Services offices of Duke University, North Carolina State University, UNC-Chapel Hill and UNC-Greensboro. The event was attended by students and postdoctoral fellows (total attendance 244, WFU, 32) and recruiters representing twenty-one employers. The event was considered to be a success and is planned to be an annual event in the future.

Financial Support

Tables 12 and 13 show the financial support provided to students in the Reynolda campus and BMS graduate programs. The University continues to be the principal source of support for tuition scholarships and for a significant number of teaching assistantships and graduate fellowships, especially for first-year students. It is imperative that WFU continues to offer competitive stipends in each of its disciplines in order to matriculate the best available graduate students. Achieving this goal will be a challenge for the Graduate School during anticipated times of financial restraint in the coming year(s).

External support for students, especially those in the PhD programs, increased on both the Reynolda campus and in the BMS programs. For the 2002-2003 year, the number of student stipends provided from external sources was the highest recorded. Both faculty and students are to be congratulated on this achievement. The increased success of the faculty and students in obtaining external support reflects well on the quality of the research conducted and the graduate education programs at Wake Forest University. Expansion of the numbers of students in the graduate programs will be dependent on the receipt of additional external financial support. Faculty, students and administration must be more actively engaged in securing external funding.

As mentioned earlier, a proposal for the establishment of the Greater North Carolina Louis Stokes Alliance for Minority Participation (GNCLSAMP) should be submitted through the Graduate School in fall 2003. Other opportunities for external support of graduate students will be considered for Graduate School submission.

The William Randolph Hearst Foundation (WRHF) announced in October 2002 that it would provide an additional \$100,000 grant to the Graduate School for support of underrepresented minority students in the PhD programs on the Reynolda campus. This grant brought contributions to the WRHF endowment to a total of \$400,000. This is a significant commitment of funds by the Foundation and reflects the success that the Graduate School has achieved, through fellowships supported by the Fund, in attracting underrepresented minority students to seek graduate degrees in the sciences.

A gift to establish the Harriet Ellis Scholarship Fund for the purchase of books for a financially deserving student in the Counselor Education program was received. A first-year student was identified to receive an award from the Fund.

Six students received funding through the Richter Scholars program on the Reynolda campus. Nineteen applications were reviewed by a faculty committee, chaired by Dr. Solano. The 2003 Richter Scholars were from graduate programs in Biology, Communication, Counselor Education, Psychology (2) and Religion. This program, now in its third year, is important to provide international travel experiences for the selected graduate students.

Ms. Helen Dowling, Assistant Director of Alumni Affairs at WFUBMC assisted the Graduate School in fund-raising efforts during the year. Mail solicitations and a phonathon were conducted during the 2002-2003 fiscal year (July 1, 2002-June 30, 2003) for the Graduate School of Arts and Sciences (GSAS) Annual Fund (Biomedical Sciences). A total of fifty-six alumni donors of the BMS programs, reflecting alumni participation of 11%, were recognized in the GSAS Annual Fund (Biomedical Sciences) Honor Roll of Alumni and Friends. The 2002-2003 percentage participation was considered to be a success; however, efforts to increase alumni participation will be undertaken during the 2003-2004 year.

A mail solicitation of alumni for the GSAS Annual Fund (Reynolda) is being planned for the Reynolda campus programs in the fall of 2003.

Postdoctoral Affairs

The committee for WFUBMC Strategy Goal 12, viz., "To significantly increase the number of individuals in training at the graduate and postdoctoral levels to enhance the research mission" submitted its report to Senior Vice President and Dean Applegate in 2002. The committee was chaired by Dean Melson. The report affirmed that postdoctoral fellows (PhD and MD/PhD) are important contributors to enhancing the research mission at the Medical Center. The report also recommended the formation of an Office of Postdoctoral Education. Dr. Applegate requested that Dr. Melson, together with Dr. James Smith, Associate Dean for Research, coordinate postdoctoral affairs for the institution.

Following two open meetings with postdoctoral fellows, Dr. John Connor, a postdoctoral fellow in the Department of Microbiology and Immunology, volunteered to assist Dr. Melson in identifying and coordinating the needs of the fellows. Dr. Ellen Palmer, also a postdoctoral fellow in Microbiology and Immunology, subsequently offered to assist Dr. Connor in his efforts. Efforts were made to identify all postdocs at both the Medical Center and on the Reynolda campus. Drs. Melson and Connor attended the 2003 Postdoc Network National Meeting held in Berkeley from March 15-17, 2003. At this meeting, WFU “volunteered” to take part in a national survey of postdocs to be coordinated by Sigma Xi during 2003-2004.

A survey of WFU postdocs brought to light several areas of concern. A meeting of a potential advisory committee for postdoctoral affairs (also recommended in the above report) took place in April 2003 where these concerns were discussed. It was recommended that a presentation of these concerns and progress on the formation of a Postdoctoral Fellows Association (PDA) etc. be made to the Faculty Executive Committee (FEC) by the end of the academic year. Several meetings between Dr. Melson and Drs. Connor and Palmer during 2002-2003 resulted in the establishment of a website for the “Office of Postdoctoral Affairs” (www.wfubmc.edu/postdoc) and the formation of a PDA. A site-wide license to Science’s Next Wave was purchased by the Graduate School, with access available to all graduate students and postdoctoral fellows. Drs. Connor and Palmer worked on the creation of a “welcome packet” for incoming postdocs that includes information about WFU and the Winston-Salem area. The enthusiasm and assistance of Drs. Connor and Palmer in working for improvements in the environment for postdocs at Wake Forest is greatly appreciated.

Professional Activities

Dean Melson and Associate Dean Solano continued to be involved in a variety of professional activities during the year. Both attended the annual meeting of the North Carolina Conference of Graduate Schools (NCCGS) meeting at UNC-Charlotte on November 2002. Dr. Melson was re-elected as Treasurer for 2002-2003.

Dr. Melson served as the President of the Conference of Southern Graduate Schools (CSGS) for 2002-2003. As President, he was closely involved in developing the program for the Annual Meeting of CSGS held in Tampa, Florida from February 20-24, 2003 and chaired the opening Plenary session. Dr. Melson attended CSGS Executive Committee meetings in December 2002 at the Council of Graduate Schools (CGS) Annual meeting held in Washington, DC and at the Tampa meeting. Dr. Solano continued as a member of the CSGS Master’s Thesis Committee.

As President and then Past-President of CSGS after February 2003, Dr. Melson served as liaison from CSGS to the CGS Board of Directors at their meetings in December 2002 and April and July, 2003. Dr. Melson attended the CGS New Deans’ Institute (NDI) and Summer Deans’ Workshop (SDW) in Savannah, Georgia, July 11-16, 2003. He gave a presentation in the session “Governance and Organization” at the NDI and served as a respondent in the SDW session on “Managing Post Doctoral Programs: An Expanding Role for Graduate Deans.” Dr. Melson attended the inaugural meeting of the Consortium

for American Indian Graduate Education as a founding member at the CGS Annual Meeting.

Dr. Melson attended the annual meeting of the Oak Ridge Associated Universities (ORAU) as WFU Councilor to ORAU in Atlanta (March 2003) and the associated meeting “Sustaining Campus Security: The Path Forward.”

PROJECTIONS FOR THE 2003-2004 YEAR

The 2003-2004 year will bring fiscal challenges, especially for the graduate programs on the Reynolda campus. Increases in stipends for matriculants and continuing students funded through the Graduate School (Reynolda Campus) budget will not be possible, except where a trade-off between the number of stipends and stipend level may be made. Funds for the purchase of computers for matriculating students need to be identified and health insurance premiums for students in PhD programs should be paid. These initiatives should be funded through the recurring budget of the Graduate School.

During the coming year, the Graduate School must identify sources of funds to support its graduate education programs. Students must continue to be encouraged to apply for their own support and faculty must include more graduate student support on applications for research and training grants. More effort must be made to solicit funds from external sources through the Development Offices on both campuses. Efforts to obtain support from foundations must be increased. Solicitation for the Annual Fund (Reynolda) and a second solicitation for the Annual Fund (BMS) must take place. Opportunities for individual giving to support the Graduate School must be investigated.

The emphasis on creating a truly diverse graduate student body at WFU will continue during the year. Partnerships will continue to be emphasized and strengthened and opportunities for new interactions will be sought. The formation of the GNCLSAMP should result in a grant proposal being submitted to the National Science Foundation.

Other partnerships, both internal and external, should be identified and opportunities to fund the activities of such partnerships should be sought.

Reviews of the Departments of English and Physics are scheduled for 2003-2004. Financial support for the graduate programs in these disciplines will be an important consideration during the reviews.

Oversight of Postdoctoral Affairs will continue through the Graduate School during the year. Activities of the PDA and postdoctoral travel expenses are currently being borne by the Graduate School; these expenses should be provided outside of the Graduate School budget in coming years. A “Policies and Procedures” document should be developed for postdocs at WFU and the Advisory Committee should become functional.

The Task Force on Bioethics will continue its discussions on the development of a master’s degree program in bioethics. The workshop “Bioethical Questions for the Future: Training Leaders” is planned to take place at the Graylyn Conference Center on January 23, 2004. Several nationally and internationally known leaders in the field of

bioethics will join faculty from both campuses and several schools of the University in the discussions.

In spite of the anticipated fiscal difficulties for 2003-2004, the graduate programs will continue to develop and increase in quality. Enrollment is not expected to increase significantly, but the quality of students should increase. The number of PhD graduates is expected to increase as new programs graduate their first students and the larger numbers of enrolled students in other programs from past years complete their studies.

The MD/PhD program is expected to graduate its first students from the MD portion of the combined program (students receive their PhD degree as they complete their graduate studies). Plans for the submission of a proposal to establish a Medical Scientist Training program (MSTP) should begin to be discussed.

Overall, the Graduate School of Arts and Sciences is strong and the reputation of excellence in its graduate programs is spreading nationally and internationally. However, this reputation could be threatened if anticipated fiscal difficulties are not resolved.

APPENDIX

Administration, Graduate School of Arts and Sciences

Gordon A. Melson, Ph.D., Dean of the Graduate School of Arts and Sciences,
Professor of Chemistry

Cecilia H. Solano, Ph.D., Associate Dean, Director of the MALS Program,
Associate Professor of Psychology

Pearl Lawrence, Registrar and Coordinator, **(to June 30, 2003)**
Biomedical Sciences Program, Bowman Gray Campus

Debbie S. Deheck, Assistant to the Dean,
Reynolda Campus

Carol E. DiGiantomasso, Admissions Coordinator,
Reynolda Campus

Susan C. Pierce, Administrative Assistant, Registrar and Coordinator **(from July 1, 2003)**
Biomedical Sciences Program, Bowman Gray Campus

Kelley N. Reavis, Administrative Assistant, **(from June 1, 2003)**
Biomedical Sciences Program, Bowman Gray Campus

Beth Whitsett, Administrative Secretary,
Biomedical Sciences Program, Bowman Gray Campus

Wanda Duncan, Administrative Coordinator (part-time),
Reynolda Campus

Sheila White, Administrative Assistant (part-time),
Reynolda Campus

Standing Committees of the Graduate School

Graduate Council

Gordon A. Melson, Dean of the Graduate School, Chair
Cecilia H. Solano, Associate Dean of the Graduate School
Martha Alexander-Miller, Microbiology and Immunology (2004)*
Michael Aschner, Physiology and Pharmacology (2003)
Michael J. Berry, Health and Exercise Science (2003)
Keith D. Bonin, Physics (2005)
Ronald V. Dimock, Biology (2003)
Iris Edwards, Comparative Medicine (2004)#
Will Fleeson, Psychology (2004)

Graduate Council (cont)

Greg Kucera, Hematology/Oncology (2005)
Leah P. McCoy, Education (2005)
Michelle J. Naughton, Public Health Sciences (2003)
Ronald W. Oppenheim, Neurobiology and Anatomy (2005)
Stephen Robinson, Mathematics (2004)
John Wilkinson, Physics (GSA, Reynolda Campus)
Kerry O'Connor, Physiology/Pharmacology (GSA, Biomedical Sciences)

* Year term expires

Secretary to the Council and Graduate Faculty

Biomedical Sciences Committee (Bowman Gray Campus)

Gordon A. Melson, Dean, Chair
Steven A. Akman, Cancer Biology
David A. Bass, MD/PhD
Ronny A. Bell, Clinical Epidemiology and Health Services Research
Larry W. Daniel, Biochemistry
Dwayne Godwin, PhD/MBA
Craig Hamilton, Biomedical Engineering
Ronald W. Oppenheim, Neuroscience
David Ornelles, Microbiology and Immunology
John S. Parks, Molecular and Cellular Pathobiology
R. Mark Payne, Molecular Medicine
Emilio Salinas, Neurobiology and Anatomy
Fred W. Perrino, Molecular Genetics
Kent E. Vrana, Physiology and Pharmacology
Pearl Lawrence, Registrar and Coordinator
Patrick Ober, ex-officio
Sheila L. Vrana, ex-officio

Graduate Program Directors Committee (Reynolda Campus)

Gordon A. Melson, Dean, Chair
Cecilia H. Solano, Associate Dean
Terry A. Baker, Accountancy
Keith D. Bonin, Physics
Samuel T. Gladding, Education (Counseling)
Kenneth G. Hogle, Religion
Dilip Kondepudi, Chemistry
Kathy Kron, Biology
Anthony P. Marsh, Health and Exercise Science
Leah P. McCoy, Education (Teaching)
Ananda Mitra, Communication
Stephen Robinson, Mathematics
Catherine E. Seta, Psychology

Graduate Program Directors Committee (Reynolda Campus) (cont)

Gale Sigal, English
Cecilia H. Solano, MALS
Stan J. Thomas, Computer Science

MD/PhD Committee

David A. Bass, Internal Medicine, Pulmonary and Critical Care Medicine, Chair
Gordon A. Melson, Dean, Graduate School
Lewis H. Nelson, Associate Dean, Student Services and Admissions, School of Medicine

PhD/MBA Committee

Dwayne W. Godwin, Neurobiology and Anatomy, Chair
Carolyn P. Campbell, Babcock Graduate School of Management
J. Kendall Middaugh, Babcock Graduate School of Management
Mark O. Lively, Biochemistry
Mark T. Wallace, Neurobiology and Anatomy
Sheila L. Vrana, Office of Research

Graduate School Advisory Committee (GSAC) of the Board of Visitors

Frank Bragg	Charlotte, NC (2003)*
Pete Daniel	Atlanta, GA (2005)
Skip Dunn	Winston-Salem, NC (2004)
Laura Elliott	Great Falls, VA (2004)
Lucy Gordon	New York, NY (2003)
George Hundley	Secaucus, NJ (2006)
Nancy Ingram	Winston-Salem, NC (2004)
Tim Lam	Vienna, VA (2004)
Beverly Lambert	Roanoke, VA (2005)
Jack Lowden	Greenwich, CT (2004)
Annis Paschal Lyles	Atlanta, GA (2004)
Martin Mayer	Shelton Island, NY (2003)
Carl Tucker	Pageland, SC (2004)
Doug Waller	Washington, DC (2006)
Woody Webb	Raleigh, NC (2005)
Jeanne Whitman	Dallas, TX (2006)
Walter Zultowski	Hartford, CT (2004)

*Term expires

Graduate Faculty Representatives

University Senate

Dale Dagenbach, Psychology (2005)

Gregory Shelness, Pathology/Comparative Medicine (2006)

Mary Sorci-Thomas, Pathology/Comparative Medicine (2004)

Faculty Grievance Liaison Persons

Dale Dagenbach, Psychology (2003) - Primary

Leslie B. Poole, Biochemistry (2003) - Alternate

Graduate Student Liaison Persons

Donna A. Henderson, Education (2003)

Mark O. Lively, Biochemistry (2003)

Task Force on Bioethics

Gordon A. Melson, Dean, Graduate School, Co-Chair

Sally A. Shumaker, Public Health Sciences, Co-Chair

Christine Coughlin, School of Law

Mark Hall, School of Law

Hannah Hardgrave, Philosophy

Michael Hyde, Communication

Nancy Jones, Pathology

TABLE 1. GRADUATE PROGRAMS AT WAKE FOREST UNIVERSITY, 2002-2003

REYNOLDA CAMPUS PROGRAMS

ACC	Accountancy	MSA	With the Wayne Calloway School of Business and Accountancy
BIO	Biology	PhD, MS	
CHM	Chemistry	PhD, MS	
CNS	Counseling	MA	
COM	Communication	MA	
CSC	Computer Science	MS	
EDU	Education	MAED	
ENG	English	MA	
HES	Health and Exercise Science	MS	
MLS	Liberal Studies	MALS	
MTH	Mathematics	MA	
PHY	Physics	PhD, MS	
PSY	Psychology	MA	
REL	Religion	MA	

BIOMEDICAL SCIENCES PROGRAMS

BICM	Biochemistry/Molecular Biology	PhD
BMEG	Biomedical Engineering	PhD, MS
CABI	Cancer Biology	PhD
CEHS	Clinical Epidemiology and Health Services Research	MS
COMD	Comparative Medicine	MS
MICR	Microbiology/Immunology	PhD
MCPA	Molecular/Cellular Pathobiology	PhD
MOGN	Molecular Genetics	PhD
MOME	Molecular Medicine	PhD, MS
NBAT	Neurobiology/Anatomy	PhD
NUSC	Neuroscience	PhD
PHAR	Pharmacology	PhD
PHYS	Physiology	PhD

COMBINED PROGRAMS

MD/PhD	With the WFU School of Medicine
PhD/MBA	With the WFU Babcock Graduate School of Management

**TABLE 2. APPLICATION STATISTICS
1991-2003**

REYNOLDA CAMPUS PROGRAMS

Year (Fall)	Applications	Accepted	Matriculated
1991	429	152 (35.4%)	141 (92.7%)
1992	507	153 (30.2%)	127 (83.0%)
1993	553	160 (28.9%)	132 (82.5%)
1994	590	184 (31.2%)	155 (84.2%)
1995	630	227 (36.0%)	190 (83.7%)
1996	581*	193 (33.2%)	172 (89.1%)
1997	642	189 (29.4%)	154 (81.5%)
1998	617	236 (38.2%)	171 (72.5%)
1999	569	262 (46.0%)	166 (63.3%)
2000	564	221 (39.1%)	174 (78.7%)
2001	607	247 (40.7%)	171 (69.2%)
2002	729	248 (34.0%)	181 (73.0%)
2003	640	239 (37.3%)	198 (82.8%)

BIOMEDICAL SCIENCES PROGRAMS

1991	173	60 (34.7%)	38 (63.3%)
1992	264	75 (28.4%)	39 (52.0%)
1993	368	78 (21.2%)	45 (51.3%)
1994	589	60 (10.2%)	44 (73.3%)
1995	333*	64 (19.2%)	36 (56.3%)
1996	265	64 (24.1%)	34 (56.3%)
1997	290	83 (28.6%)	42 (50.6%)
1998	315	87 (27.6%)	44 (50.6%)
1999	265	79 (29.8%)	43 (54.4%)
2000	325	87 (26.8%)	52 (59.8%)
2001	282	85 (30.1%)	47 (55.3%)
2002	329	98 (29.8%)	55 (56.1%)
2003	346	105 (30.3%)	73 (69.5%)

*Restrictions on international applications introduced

TABLE 3. STUDENT PROFILE, APPLICANTS, ACCEPTED, MATRICULANTS, FALL 2001-FALL 2003

REYNOLDA CAMPUS PROGRAMS

	Male	Female	Unk	TOTAL	White	Black	Hispanic	Asian*	Am Ind	Intern#	Unk
<u>Applicants</u>											
2001	246	361	0	607	362	36	12	15	1	149	32
2002	289	440	0	729	414	43	10	19	1	217	25
2003	243	397	0	640	443	23	12	7	1	114	40
<u>Accepted</u>											
2001	111	136	0	247	165	18	5	5	1	36	17
2002	96	152	0	248	187	12	5	5	1	29	9
2003	92	147	0	239	185	9	2	3	0	29	11
<u>Selectivity</u>											
2001				40.7%							
2002				34.0%							
2003				37.3%							
<u>Matriculants</u>											
2001	74	97	0	171	127	15	2	2	0	25	0
2002	60	121	0	181	151	11	2	5	1	11	0
2003	83	115	0	198	176	6	2	4	0	10	0
<u>Yield</u>											
2001				69.2%							
2002				73.0%							
2003				82.8%							

BIOMEDICAL SCIENCES PROGRAMS

<u>Applicants</u>											
2001	149	133	0	282	148	19	3	19	1	80	12
2002	172	157	0	329	156	36	7	19	1	104	6
2003	163	182	1	346	161	26	8	22	2	114	13
<u>Accepted</u>											
2001	37	48	0	85	55	8	0	7	0	15	0
2002	49	49	0	98	65	14	4	4	0	9	2
2003	46	59	0	105	72	6	3	9	0	15	0
<u>Selectivity</u>											
2001				30.1%							
2002				29.8%							
2003				30.3%							
<u>Matriculants</u>											
2001	25	22	0	47	30	7	0	3	0	7	0
2002	27	28	0	55	34	11	0	1	0	9	0
2003	34	39	0	73	49	6	3	5	0	10	0
<u>Yield</u>											
2001				55.3%							
2002				56.1%							
2003				69.5%							

*U.S. Address, Asian Ethnicity

Non-U.S. Address, Ethnicity not checked

Applicants: Completed applications received

Accepted: Students to whom offers of admission were made

Matriculants: Students who enrolled

**TABLE 4. STUDENT PROFILE, APPLICANTS, MATRICULANTS, DEMOGRAPHICS
FALL 2001-FALL 2003**

REYNOLDA CAMPUS PROGRAMS

State*	2001		2002		2003	
	Applicants	Matriculants	Applicants	Matriculants	Applicants	Matriculants
AL	8	3	7	1	4	1
CA	1	1	9	3	5	1
FL	9	2	13	3	12	3
GA	13	3	18	5 (2.8%)	24 (3.8%)	6 (3.0%)
MD	7	1	11	1	8	1
NC	253 (41.7%)	82 (47.9%)	302 (41.4%)	113 (62.4%)	325 (51%)	120 (61%)
NJ	4	1	2	0	1	0
NY	7	3	10	1	17	2
OH	10	0	12	3	14	5
PA	13 (2.1%)	3 (1.8%)	28 (3.8%)	5	22 (3.4%)	4
SC	15	6	23	5	36 (5.6%)	10 (5.1%)
TN	13	5	14	3	6	2
TX	8	3	6	1	8	3
VA	42 (6.9%)	11 (6.4%)	29 (4.0%)	9 (5.0%)	35 (5.5%)	10 (5.1%)
Other States	71 (11.7%)	22 (12.9%)	82 (11.2%)	17 (9.4%)	74 (12%)	20 (10.1%)
Intern &Unkn	133 (21.9%)	25 (14.6%)	163 (22.4%)	11 (6.1%)	49 (8%)	10 (5.1%)
TOTAL	607	171	729	181	640	198

*State of student permanent address

**TABLE 4 (CONT). STUDENT PROFILE, APPLICANTS, MATRICULANTS, DEMOGRAPHICS
FALL 2001-FALL 2003**

BIOMEDICAL SCIENCES PROGRAMS

State*	2001		2002		2003	
	Applicants	Matriculants	Applicants	Matriculants	Applicants	Matriculants
AL	4	0	0	0	0	0
CA	10	0	9	2	5	1
FL	10	1	14 (4.3%)	5 (9.1%)	14 (4.0%)	3 (4.1%)
GA	8	0	8	1	10	2
MD	8	2	9	3	12	3
NC	55 (19.5%)	20 (42.5%)	70 (21.2%)	23 (41.8%)	70 (20.2%)	26 (35.6%)
NJ	3	1	4	2	5	2
NY	2	0	13	0	7	1
OH	6	3	5	1	5	1
PA	22 (7.8%)	3 (6.4%)	13 (4.0%)	4 (5.6%)	12 (3.5%)	3 (4.1%)
SC	7	3	5	1	7	1
TN	2	0	4	1	5	1
TX	5	1	3	0	8	1
VA	13	0	22	0	27	12
Other States	55 (19.5%)	6 (12.8%)	46 (14.0%)	3 (5.5%)	45 (13.0%)	6 (8.2%)
Intern &Unkn	72 (25.5%)	7 (14.8%)	104 (31.6%)	9 (16.2%)	114 (32.9%)	10 (13.7%)
TOTAL	282	47	329	55	346	73

*State of student permanent address

**TABLE 5. STANDARDIZED SCORES AND GRADE POINT AVERAGES (GPA)
FALL 2001-FALL 2003**

REYNOLDA CAMPUS PROGRAMS

	Verb	Quant	(V+Q)	Anal	TOTAL	GPA	TOEFL	GMAT	GRE Anal
<u>Applicants</u>									
2001	512	633	1145	630	1775	3.3	615	632	
2002	529	638	1167	637	1804	3.4	613	622	
2003	528	636	1164	623	1787	3.4	613	626	4.61

<u>Accepted</u>									
2001	535	654	1189	651	1840	3.4	595	638	
2002	529	640	1169	638	1807	3.5	610	627	
2003	560	664	1224	676	1900	3.5	627	639	

<u>Matriculants</u>									
2001	523	630	1153	627	1780	3.4	584	635	
2002	515	624	1139	622	1761	3.5	580	629	
2003	561	662	1223	673	1896	3.5	630	645	

BIOMEDICAL SCIENCES PROGRAMS

<u>Applicants</u>									
2001	531	670	1201	659	1860	3.3	620		
2002	552	684	1236	659	1895	3.3	264*		
2003	536	681	1217	668	1885	3.3	258*		

<u>Accepted</u>									
2001	534	663	1197	673	1870	3.4	619		
2002	532	667	1199	641	1840	3.3	268*		
2003	529	673	1202	667	1869	3.4	258*		

<u>Matriculants</u>									
2001	517	635	1152	640	1792	3.4	603		
2002	525	646	1171	621	1792	3.2	260*		
2003	516	658	1174	652	1826	3.4	252*		

*Computer-based test results

**TABLE 6. STANDARDIZED TEST SCORES FOR MATRICULATED STUDENTS
GRADUATE RECORD EXAMINATION (GRE) SCORES**

REYNOLDA CAMPUS PROGRAMS

<u>Year (Fall)</u>	<u>Verbal (%)*</u>	<u>Quantitative (%)*</u>	<u>(Combined)</u>	<u>Analytical (%)*</u>	<u>(Total)</u>
1992	556	614	(1180)	615	(1795)
1993	600	640	(1240)	664	(1904)
1994	610	640	(1250)	670	(1920)
1995	600	650	(1250)	680	(1930)
1996	530	610	(1140)	620	(1760)
1997	565	636	(1201)	657	(1858)
1998	539	601	(1140)	612	(1752)
1999	533	634	(1167)	622	(1789)
2000	535 (69%)	634 (64%)	(1169)	647 (74%)	(1816)
2001	523 (66%)	630 (62%)	(1153)	627 (68%)	(1780)
2002	515 (62%)	624 (57%)	(1139)	622 (62%)	(1761)
2003	561 (76%)	662 (64%)	(1223)	673 (71%)	(1896)

BIOMEDICAL SCIENCES PROGRAMS

1992	549	660	(1209)	596	(1805)
1993	564	625	(1189)	612	(1801)
1994	541	653	(1194)	620	(1814)
1995	545	655	(1200)	653	(1853)
1996	564	680	(1244)	634	(1878)
1997	551	668	(1219)	636	(1855)
1998	534	643	(1177)	636	(1813)
1999	544	642	(1186)	657	(1843)
2000	531 (68%)	660 (71%)	(1191)	667 (79%)	(1858)
2001	517 (64%)	635 (63%)	(1152)	640 (72%)	(1792)
2002	525 (65%)	646 (59%)	(1171)	621 (61%)	(1792)
2003	516 (64%)	658 (64%)	(1174)	652 (68%)	(1826)

National mean all takers:

1998-2001	469	584	(1053)	560	(1613)
-----------	-----	-----	--------	-----	--------

**TABLE 6 (CONT). STANDARDIZED TEST SCORES FOR MATRICULATED STUDENTS
GRADUATE MANAGEMENT ADMISSIONS TEST (GMAT) SCORES**

ACCOUNTANCY PROGRAM

Year (Fall)	Score (%)*
1995	600
1996	550
1997	615
1998	626
1999	649
2000	646 (84%)
2001	635 (81%)
2002	629 (80%)
2003	645 (81%)

National Mean (50%), all takers:

1997-2000 527

*Percent of examinees scoring lower than stated score

**STANDARDIZED TEST SCORES FOR MATRICULATED STUDENTS
MEDICAL COLLEGE ADMISSIONS TEST (MCAT) SCORES**

MD/PhD PROGRAM

Year (Fall)	Verb	Phys	Biol	Total
1997				33
1998				34
1999				34
2000	7.5	11.5	11	30
2001	10	12	12	34
2002	12	12	10	34
2003	11	12	11	34

**TABLE 7. STUDENT ENROLLMENT
FALL 1995-FALL 2003**

REYNOLDA CAMPUS PROGRAMS

<u>Year</u>	<u>F95</u>	<u>F96</u>	<u>F97</u>	<u>F98</u>	<u>F99</u>	<u>F00</u>	<u>F01</u>	<u>F02</u>	<u>F03</u>
PhD Programs									
BIO	29	33	32	29	35	35	25	31	39
CHM	27	34	34	29	25	26	35	34	33
PHY	19	17	17	20	18	17	24	23	24
TOTAL	75	84	83	78	78	78	84	88	96
Masters-only Programs									
ACC	35	70	67	66	39*	60*	58*	62*	58*
ANT	21	18	11	7	5	3	3	0	0
CNS	30	30	29	29	29	28	28	31	31
COM	17	18	20	25	20	19	19	21	25
CSC	14	16	10	12	15	14	14	16	17
EDU	37	27	36	35	32	24	29	30	32
ENG	17	22	21	16	20	20	17	20	26
HES	14	11	14	14	15	13	13	14	14
HST	16	20	19	21	9	5	1	0	0
MLS	57	62	53	52	61	62	48	52	76
MTH	11	12	12	14	12	14	14	9	14
PSY	27	25	27	23	24	26	28	30	28
REL	20	21	18	23	19	14	8	10	13
THE	1	-----							
TOTAL	317	352	337	337	300	302	280	295	334
<u>Unclassified</u>									
TOTAL	25	17	24	26	22	19	33	20	21
TOTAL	417	453	444	441	400	399	397	403	451

* Does not include 4th year Accountancy students

**TABLE 7 (CONT). STUDENT ENROLLMENT
FALL 1995-FALL 2003**

BIOMEDICAL SCIENCES PROGRAMS

<u>Year</u>	<u>F95</u>	<u>F96</u>	<u>F97</u>	<u>F98</u>	<u>F99</u>	<u>F00</u>	<u>F01</u>	<u>F02</u>	<u>F03</u>
<u>PhD Programs</u>									
BICM	29	26	22	23	24	21	21	24	25
BMEG		5	7	9	10	10	6	8	17
CABI			3	7	11	12	18	23	22
MICR	18	18	20	19	20	21	22	26	28
MCPA	16	15	14	16	18	18	20	18	20
MOGN	9	10	12	11	13	12	14	14	15
MOME				3	7	11	13	16	23
NBAT	9	11	10	9	12	11	15	15	15
NUSC	23	22	20	18	19	19	22	27	25
PHYS/PHAR	25	25	28	29	22	26	26	25	28
TOTAL	129	132	136	144	156	161	177	196	218
<u>Masters Programs</u>									
COMD	0	0	0	0	0	0	1	0	0
EPID	20	17	17	11	8	3	0	1	1
HSRE			3	6	7	5	2	2	1
BMEG								0	6
MOME						1	0	0	1
CEHS						10	19	18	17
TOTAL	20	17	20	17	15	19	22	21	26
<u>Unclassified</u>									
TOTAL	16	12	10	9	12	6	9	22	22
<u>TOTAL</u>	<u>165</u>	<u>161</u>	<u>166</u>	<u>170</u>	<u>183</u>	<u>186</u>	<u>208</u>	<u>239</u>	<u>266</u>
<u>TOTAL GRADUATE STUDENT ENROLLMENT (ALL programs)</u>									
	582	614	610	611	583	585	605	642	717

**TABLE 8. STUDENT PROFILE, TOTAL ENROLLMENT, DEGREE-SEEKING STUDENTS
FALL 2002, FALL 2003**

REYNOLDA CAMPUS PROGRAMS

	2002			2003		
	<u>Total</u>	<u>Male</u>	<u>Female</u>	<u>Total</u>	<u>Male</u>	<u>Female</u>
African-American	28			25	10	15
Asian-American	5			5	1	4
Hispanic-American	5			4	0	4
Native-American	3			1	0	1
Total under-represented	41 (11%)			35 (8.1%)	11	24
White	286			346	139	207
Total Domestic	327	122	205	381	150	231
International	56 (15%)	29	27	49 (11.4%)	29	20
TOTAL	383			430	179	251

BIOMEDICAL SCIENCES PROGRAMS

	2002			2003		
	<u>Total</u>	<u>Male</u>	<u>Female</u>	<u>Total</u>	<u>Male</u>	<u>Female</u>
African-American	24			24	6	18
Asian-American	7			10	6	4
Hispanic-American	2			4	2	2
Native-American	1			1	0	1
Total under-represented	34 (16%)			39 (16%)		
White	149			168	77	91
Total Domestic	183	79	104	207	91	116
International	34 (16%)	15	19	37 (15.2%)	18	19
TOTAL	217			244	109	135

**TABLE 9. INTERNATIONAL STUDENT PROFILE
FALL 2002**

<u>Reynolda Campus</u>	<u>All (New)</u>	<u>Biomedical Sciences</u>	<u>All (New)</u>
<u>Country of Origin</u>		<u>Country of Origin</u>	
Bulgaria	2	Bermuda	1
Canada	2	Brazil	1 (1)
China	29 (3)	Canada	3
Columbia	1 (1)	China	11 (4)
Eritrea	1	Czech Republic	1
Finland	1	Ethiopia	1 (1)
France	1 (1)	Germany	1
India	8 (2)	India	3
Indonesia	1	Indonesia	1
Iran	1	Lebanon	1 (1)
Japan	3 (2)	Nepal	2
Nigeria	1 (1)	Spain	1
Russia	1	Sri Lanka	1 (1)
South Africa	1 (1)	Sweden	1
Trinidad	1	Taiwan	1
Turkey	1	Trinidad/Tobago	1 (1)
Vietnam	1	Turkey	2
		United Kingdom	1
Total	56 (11)	Total	34 (9)
Degree-seeking enrollment: 383 (181)		Degree-seeking enrollment: 217 (55)	
<u>% International: 15(6)%</u>		<u>% International: 16(16)%</u>	

Total International: 90 (15%) (20) (9%)

<u>Programs of Study</u>		<u>Programs of Study</u>	
Accountancy	6 (2)	Biochemistry/Molecular Biology	6 (4)
Biology	4 (1)	Cancer Biology	2
Chemistry	11 (1)	Clinical Epid/Health Serv Res	2
Communication	5 (2)	Medical Engineering	5 (1)
Computer Science	8 (1)	Microbiology/Immunology	3 (1)
Education (C)	3 (1)	Molecular/Cellular Pathobiology	2
Education (T)	1 (1)	Molecular Genetics	2
English	1	Molecular Medicine	2 (1)
Health and Exercise Science	1	Neurobiology/Anatomy	2 (1)
Liberal Studies	1 (1)	Neuroscience	4 (1)
Mathematics	1 (1)	Pharmacology	3
Physics	12	Physiology	1
Psychology	1		

**TABLE 9 (CONT). INTERNATIONAL STUDENT PROFILE
FALL 2003**

<u>Reynolda Campus</u>	<u>All (New)</u>	<u>Biomedical Sciences</u>	<u>All (New)</u>
<u>Country of Origin</u>		<u>Country of Origin</u>	
Bulgaria	2	Bermuda	1
Canada	1	Brazil	1
China	24 (4)	Canada	3 (2)
Eritrea	1	China	10
France	1	Czech Republic	1
Hong Kong	1 (1)	Eritrea	1 (1)
India	8 (2)	Ethiopia	1
Indonesia	2 (1)	Germany	1
Iran	1	India	5 (4)
Japan	3	Indonesia	1
Nigeria	1	Korea	1 (1)
Peru	2 (2)	Lebanon	1
Russia	1	Nepal	1
South Africa	1	Romania	1 (1)
		Seychelles	1 (1)
		Spain	1
		Sri Lanka	1
		Sweden	2
		Taiwan	1 (1)
		Turkey	1
		United Kingdom	1
Total	49 (10)	Total	37 (11)
Degree-seeking enrollment:	430 (198)	Degree-seeking enrollment:	244 (73)
<u>% International: 11(5)%</u>		<u>% International: 15(15)%</u>	

Total International: 86(13%) (21) (8%)

<u>Programs of Study</u>		<u>Programs of Study</u>	
Accountancy	4 (2)	Biochemistry/Molecular Biology	6 (1)
Biology	6 (1)	Cancer Biology	3 (1)
Chemistry	13 (3)	Clin Epidemiology/Health Serv Res	3 (3)
Communication	4	Biomedical Engineering	4 (1)
Computer Science	6 (2)	Microbiology/Immunology	3
Counseling	1	Molecular/Cellular Pathobiology	2
Education	0	Molecular Genetics	1
English	0	Molecular Medicine	3 (1)
Health and Exercise Science	0	Neurobiology/Anatomy	2
Liberal Studies	1	Neuroscience	3
Mathematics	3 (2)	Pharmacology	5 (4)
Physics	10	Physiology	2 (1)
Psychology	1		

**TABLE 10. DEGREES AWARDED
1995-1996 TO 2002-2003**

REYNOLDA CAMPUS PROGRAMS

<u>Year</u>	<u>95-96</u>	<u>96-97</u>	<u>97-98</u>	<u>98-99</u>	<u>99-00</u>	<u>00-01</u>	<u>01-02</u>	<u>02-03</u>
<u>Ph.D. (M.S.)</u>								
BIO	1 (6)	0 (6)	1 (8)	1 (8)	1 (7)	4 (7)	1 (4)	1 (7)
CHM	7 (4)	1 (3)	5 (4)	8 (0)	6 (1)	1 (1)	4 (0)	3 (3)
PHY	0 (4)	2 (0)	2 (1)	2 (2)	4 (0)	0 (2)	3 (1)	3 (0)
TOTAL	8 (14)	3 (9)	8 (13)	11 (10)	11 (8)	5 (10)	8 (5)	7 (10)
<u>Masters degrees from Masters -only programs</u>								
ACC		34	36	27	35	44	42	52
ANT	4	5	3	3	0	0	4	0
COM	6	6	10	7	12	8	11	9
CSC	8	7	10	7	10	10	3	8
EDU(C)	15	13	15	16	15	14	12	15
EDU(T)	17	33	22	37	32	28	22	26
ENG	4	6	9	9	6	14	1	7
HES	7	7	6	7	7	7	6	7
HST	6	8	8	2	6	1	2	1
MLS	5	11	20	5	13	10	14	13
MTH	5	5	5	8	5	6	7	5
PSY	13	7	18	8	11	10	14	10
REL	8	7	4	9	1	6	2	1
THE	-----							
TOTAL	98	149	166	142	147	158	140	154
TOTAL	8(112)	3(158)	8(179)	11(152)	11(155)	5(168)	8(145)	7(164)

**TABLE 10 (CONT). DEGREES AWARDED
1995-1996 TO 2002-2003**

BIOMEDICAL SCIENCES PROGRAMS

<u>Year</u>	<u>95-96</u>	<u>96-97</u>	<u>97-98</u>	<u>98-99</u>	<u>99-00</u>	<u>00-01</u>	<u>01-02</u>	<u>02-03</u>
<u>Ph.D. (M.S.)</u>								
BICM	5 (1)	6 (4)	4 (0)	2 (1)	3 (0)	7 (1)	2 (0)	4 (0)
BMEG					1(0)	3 (0)	1 (0)	1 (0)
CABI					1(0)	1 (0)	0 (0)	4 (0)
MICR	2 (0)	1 (0)	4 (0)	4 (0)	2 (0)	2 (0)	2 (0)	4 (0)
MCPA	2 (1)	2 (0)	3 (0)	1 (1)	1 (0)	2 (0)	3 (0)	2 (3)
MOGN	1 (0)	0 (0)	3 (0)	0 (0)	2 (0)	1 (0)	1 (0)	3 (1)
MOME							2 (0)	0 (0)
NBAT	2 (0)	2 (0)	2 (0)	1 (1)	1 (1)	0 (1)	1 (0)	2 (0)
NUSC	1 (1)	2 (0)	7 (0)	2 (0)	2 (0)	1 (0)	1 (0)	3 (0)
PHAR	2 (0)	2 (1)	1 (0)	8 (0)	3 (1)	3 (0)	4 (0)	4 (0)
PHYS	1 (0)	2 (1)	0 (0)	2 (0)	1 (0)	0 (0)	0 (0)	2 (0)
TOTAL	16 (3)	17 (5)	24 (0)	20 (3)	17 (2)	20 (2)	17 (0)	29 (4)

M.S. from Masters-only programs

CEHS							5	5
COMD	0	0	0	0	0	0	0	0
EPID	3	4	3	2	3	3	0	0
HSRE					1	1	1	1
TOTAL	3	4	3	2	4	4	6	6

<u>TOTAL</u>	<u>16(6)</u>	<u>17(9)</u>	<u>24(3)</u>	<u>20(5)</u>	<u>17(6)</u>	<u>20(6)</u>	<u>17(6)</u>	<u>29 (10)</u>
---------------------	---------------------	---------------------	---------------------	---------------------	---------------------	---------------------	---------------------	-----------------------

TOTAL NUMBER OF DEGREES AWARDED (All programs)

24(118)	20(167)	32(182)	31(157)	28(161)	25(174)	25(151)	36(174)
----------------	----------------	----------------	----------------	----------------	----------------	----------------	----------------

**TABLE 11. PLACEMENT
2002-2003**

REYNOLDA CAMPUS GRADUATES

<u>Program</u>	<u>U/Grad</u>	<u>Degree</u>	<u>Plans</u>
ACC	Changchun Optics & Fine Mechanics Institute Davidson College Mary Washington College Louisiana State University Nanjing University Sanford University Shanghai University of Finance and Economics UNC-Wilmington WFU*	MSA	Unknown Chicago, IL Ernst & Young Atlanta, GA KPMG Norfolk, VA KPMG Nashville, TN Accounting Firm Raleigh, NC Pricewaterhouse Coopers, LLP Greensboro, NC Unknown RJR Tobacco Winston-Salem, NC Pricewaterhouse Coopers, LLP Boston, MA (3) Reznick, Fedder & Silverman Charlotte, NC Bank of America Charlotte, NC KPMG Charlotte, NC (4) Deloitte & Touche Charlotte, NC Milo's Hamburgers Birmingham, AL Accounting Firm New York, NY Pricewaterhouse Coopers, LLP New York, NY (4) Pricewaterhouse Coopers, LLP Atlanta, GA (2) Reznick, Fedder & Silverman Bethesda, MD Ernst & Young, LLP New York, NY Merrill Lynch Location: Unknown

*All subsequent from WFU

**TABLE 11 (CONT). PLACEMENT
2002-2003**

REYNOLDA CAMPUS GRADUATES

<u>Program</u>	<u>U/Grad</u>	<u>Degree</u>	<u>Plans</u>
ACC	WFU*	MSA	KPMG Raleigh, NC JD - University of Cincinnati Pricewaterhouse Coopers, LLP Charlotte, NC (2) Deloitte & Touche Tampa, FL Ernst & Young Boston, MA JD - University of Texas Pricewaterhouse Coopers, LLP Chicago, IL GE Connecticut Ernst & Young McLean, VA Keefe, Bruyette & Woods Richmond, VA PWL, Boston, MA KPMG, Atlanta, GA Deloitte & Touche Hickory, NC Deloitte & Touche Atlanta, GA KPMG, Cincinnati, OH Unknown
*All subsequent from WFU			
BIO	College of William & Mary Eckerd College Humboldt State University Millerville University Wabash College	PhD MS	Unknown PhD - Wake Forest PA - Location Unknown Unknown PhD - WFUSM PhD - Univ. of Illinois-Urbana
CHM	Averett University Gettysburg College Methodist College Appalachian State University Erskine College	PhD MS	Post-Doc, Location Unknown Post-Doc, WFUBMC Unknown Unknown Unknown

**TABLE 11 (CONT). PLACEMENT
2002-2003**

REYNOLDA CAMPUS GRADUATES

<u>Program</u>	<u>U/Grad</u>	<u>Degree</u>	<u>Plans</u>
CHM	Norwich University	MS	Research & Development Chemist U.S. Air Force
COM	Concordia College George Mason University Gonzaga University Michigan State University Queen's College Southeast University University of Georgia WFU	MA MA	PhD-Ohio State ECPI College of Technology Manassas, VA PhD-University of Georgia PhD-University of Kentucky PhD-Howard University MSA in Accounting-WFU PhD-University of Georgia Unknown Unknown
CSC	Bilkent University College of Engineering, India Colorado State University Southern Connecticut State Tsinghua University UESTC, China UNC-Greensboro Xi'an Jiaotong University	MS	PhD-Biomedical Engineering, WFUSM Unknown Unknown Unknown (2) PhD-Location Unknown Unknown Unknown Engineer, China
EDU (C)	Bowling Green State Univ. Davidson College Duke University Edinboro Univ. of Pennsylvania High Point University James Madison University North Carolina Central Univ. UNC-Chapel Hill University of Texas University of Virginia University of Washington University of Washington - Whitewater WFU W. Henberg University	MAED	Unknown Elementary School Teacher, NC Unknown Unknown Unknown Counselor, Maryland Unknown School Counselor, Augusta, GA Unknown School Counselor, NC Counselor, Washington Counselor, Salem College, Winston-Salem, NC School Counselor, Winston-Salem, NC Private Practice, Winston-Salem, NC

**TABLE 11 (CONT). PLACEMENT
2002-2003**

REYNOLDA CAMPUS GRADUATES

<u>Program</u>	<u>U/Grad</u>	<u>Degree</u>	<u>Plans</u>
EDU (T)	Agnes Scott College	MAED	Teacher, Winston-Salem, NC
	Bates College		Teacher, Wayland, MA
	Catawba College		Teacher, Winston-Salem, NC
	Davidson College		Teacher, Charlotte, NC
	Furman University		Teacher, Winston-Salem, NC
	Hollins University		Teacher, Kernersville, NC
	Lipscomb University		Teacher, Nashville, TN
	Sanford University		MS in Architecture, Univ. of Pennsylvania
	UNC-Chapel Hill		Teacher, Durham, NC
			Teacher, Bolton, MA
			Steve White Volkswagen/Audi, Greenville, SC
	UNC-Greensboro		PhD-UNC-Greensboro
	WFU		Teacher, Welcome, NC
			Teacher, Hendersonville, NC
			Teacher, Winston-Salem, NC
ENG	William Jewell College	MA	Teacher, Maryland
			Teacher, NCSA, Winston-Salem, NC
	Guilford College		Unknown
	Lee University		Teacher, New Mexico
	Sanford University		PhD-Location Unknown
	Univ. of Hochiminh City		Unknown
	University of Iowa		Unknown
	WFU		PhD, Medieval Lit., UNC-CH
HES	Western Washington University	MS	MA, Teaching, Location Unknown
	College of Charleston		Cardiac Rehabilitation, Charleston, SC
	Ithaca College		Unknown
	Penn State University		Research Assistant, Japan
	UNC-Chapel Hill		Unknown
	UNC-Wilmington		PhD, Rehabilitation Science Technology, University of Pittsburgh
	Univ. of Waterloo		Cardiac Therapist, Location Unknown
	Virginia Tech		PhD, Clinical Exercise Physiology, Virginia Tech
HST	Washington & Lee	MA	Currently Employed in Education

**TABLE 11 (CONT). PLACEMENT
2002-2003**

REYNOLDA CAMPUS GRADUATES

<u>Program</u>	<u>U/Grad</u>	<u>Degree</u>	<u>Plans</u>
MLS	High Point University	MALS	Unknown
	Lenoir Rhyne College		Currently Employed - WFU
	New Mexico State Univ.		Currently Employed
	Salem College		Currently Employed, Winston-Salem, NC
			PhD, Women Studies, UNC-G
			Salem Academy & College, Winston-Salem, NC
MTH	Surry Community College	MA	Unknown
	WFU		Unknown (2)
	Winston-Salem State Univ.		Sara Lee Corporation
			St. Louis, MO
PHY	Columbia College of SC	MA	Unknown, Winston-Salem, NC
	High Point Univ.		PhD-Virginia Polytechnic Inst. & State Univ.
	Lenoir Rhyne College		Teacher, WFU
	Salisbury University		Biostatistician, WFUBMC
	William Jewell College		Statistician, WFUBMC
PSY	UNC-Chapel Hill	PhD	Unknown
	WFU		Xavier University, New Orleans, LA
	Yerevan State University		Unknown
REL	Brown University	MA	Unknown
	Coastal Carolina Univ.		PhD, Psychology, Louisiana State Univ.
	College of Charleston		PhD, Social Psychology, Univ. of Connecticut
	East Carolina Univ.		Unknown
	Furman University		Unknown
	Mary Washington College		PhD, Psychology, Location Unknown
	NC State University		PhD, Psychology, Univ. of Il at Chicago
	Univ. of Tennessee		Unknown
	Univ. of Washington		Surry Community College, Dobson, NC
REL	Wofford College		Unknown
	Meredith College	MA	Unknown

**TABLE 11 (CONT). PLACEMENT
2002-2003**

BIOMEDICAL SCIENCES GRADUATES

<u>Program</u>	<u>U/Grad</u>	<u>Degree</u>	<u>Plans</u>
BICM	St. Andrews Presbyterian College	PhD	Post Doc, Fox Chase Cancer Center, Philadelphia, PA
	University of Puget Sound	PhD	Post Doc, University of Alabama, Birmingham
	Virginia Polytechnic Institute and State University	PhD	Post Doc, WFUSM
	Catawba College	PhD	Post Doc, University of North Carolina - Chapel Hill
BMEG	South Carolina State University	PhD	Radiation Oncology Physics Resident, Washington University School of Medicine, St. Louis, MO
CABI	Bucknell University	PhD	Post Doc, UNC-Chapel Hill
	UNC-Charlotte	PhD	Post Doc, National Institute of Environmental and Health Sciences (NIEHS), Research Triangle Park, NC
	Wake Forest University	PhD	Post Doc, Baylor College of Medicine, Houston, TX
	Nankai University, China	PhD	Pursue M.D., Univ. of Missouri at Columbia
CEHS	Ecole des Houts Etudeseu Sciences	MS	Faculty, WFUSM
	Georg-August-Universitat Gottingen	MS	MD, WFUSM
	Kanpur University, India	MS	Research, WFUSM
	Old Dominion	MS	M.D., Private Practice
	Salem College	MS	Research Associate, WFUSM
HSRE	UNC-Chapel Hill	MS	MD, WFUSM
MICR	Furman University	PhD	Post Doc, University of Michigan Medical School
	Lehigh University	PhD	United States Army Medical Research Institute for Infectious Diseases (USAMRIID)
	James Madison University	PhD	Post Doc, University of Pennsylvania
	Franklin & Marshall	PhD	Post Doc, Vanderbilt University
MCPA	Trenton State College	MS	High School Science Teacher, Thomasville, NC
	Marquette University	PhD	Post Doc, WFUSM
	Presbyterian College	PhD	Post Doc, WFUSM
	Tulane	MS	DVM, Mississippi State University

**TABLE 11 (CONT). PLACEMENT
2002-2003**

BIOMEDICAL SCIENCES GRADUATES

<u>Program</u>	<u>U/Grad</u>	<u>Degree</u>	<u>Plans</u>
MOGN	Virginia Polytechnic Institute and State University	PhD	Post Doc, University of New York - Rochester
	James Madison University	PhD	Post Doc, WFUSM
	St. Joseph's College of Arts and Sciences	PhD	Post Doc, WFUSM
	University of Maryland	MS	Pursue PhD in Pharmacology, WFU Grad School
MOME			
NBAT	Elon College	PhD	Director of Microscopy/Adjunct Assistant Professor, Biology, WFU
	University of Maryland	PhD	Complete MD @ WFUSM
NUSC	Towson University	PhD	Post Doc, University of Pennsylvania
	University of California, San Diego	PhD	Post Doc, WFUSM
	Salem College	MS	Ownership in consulting firm
PHAR	Carleton University	PhD	Post Doc, University of California, San Francisco
	University of Kentucky	PhD	Post Doc,
	Virginia Polytechnic Institute and State University	PhD	Training Program, CATO Research, Durham, NC
	East Carolina University	PhD	Complete MD @ WFUSM
PHYS	Bucknell University	PhD	Post Doc, Oregon Health & Science University
	Virginia Polytechnic Institute and State University	PhD	Post Doc, National Institutes of Health, Bethesda, Maryland

**TABLE 12. FINANCIAL AID
1995-1996 TO 2002-2003**

REYNOLDA CAMPUS PROGRAMS

<u>Year</u>	<u>95-96</u>	<u>96-97</u>	<u>97-98</u>	<u>98-99</u>	<u>99-00</u>	<u>00-01</u>	<u>01-02</u>	<u>02-03</u>
<u>Tuition</u>	14,750	15,500	16,300	17,150	18,000	19,800	20,790	22,200
<u>Stipend (10 months, *12 months)</u>								
Fellowship	4,000	4,000	4,000	4,000	4,000	4,000	4,000	4,000
MTF	3,000 *	4,000 *	4,000 *	4,000 *	4,000 *	4,000	6,000	6,000
MTF (min)	8,000 *	8,000 *	8,000 *	8,000 *	8,000 *	8,000	8,000	8,000
Dean's Assistantship							17,000	17,500
BIO	11,000 *	11,500 *	12,000 *	12,500 *	12,500	13,000	13,500	14,000
CHM	12,600 *	13,100 *	13,500 *	14,000 *	14,500 *	15,000 *	15,500 *	16,000*
PHY	10,500 *	11,000 *	11,500 *	12,500 *	13,000 *	13,500	14,000	14,500
ACC	N/A	8,000	8,000	6,000	6,000	6,000	6,000	6,000
CSC, MTH	8,000	8,000	8,500	8,500	9,000	9,500	9,500	10,000
HES	7,000	7,000	7,000	8,000	8,000	8,500	8,500	8,500
PSY	7,000	7,000	8,000	8,000	8,000	8,500	8,500	8,500
COM, EDU, ENG, REL								
	7,000	7,000	7,000	7,000	7,000	7,000	8,000	8,000

BIOMEDICAL SCIENCES PROGRAMS

<u>Tuition#</u>	15,050	15,800	16,600	17,450	18,300	20,100	21,090	22,500
<u>Stipend (12 months)</u>								
ALL PROGRAMS								
	14,500	14,750	15,000	15,000 +	15,500 +	16,000 +	16,500 +	18,500+

Includes summer tuition of \$300 per year

+ Plus contribution to health insurance premium

(98-99, \$600; 99-00, \$750; 00-01, \$900; 01-02, \$900; 02-03, \$900)

**TABLE 13. SOURCES OF FINANCIAL AID
1996-1997 TO 2002-2003**

REYNOLDA CAMPUS PROGRAMS

<u>Year</u>	<u>96-97</u> ⁽¹⁾	<u>97-98</u>	<u>98-99</u>	<u>99-00</u>	<u>00-01</u>	<u>01-02</u>	<u>02-03</u>
Assistantships	112	116	112	110	126	126 ⁽²⁾	134 ⁽²⁾
Dean's Fellowships (PhD programs)					3	3	3
Educators							7 ⁽³⁾
Fellowships	52	53	52	37	18	20	31
Scholarships/FT (#external support, of total)	109 (19)	104 (20)	90 (15)	107 (26)	120 (22)	96 (22)	99 (34)
Scholarships/PT	19	18	15	15	9	9	10
One-Half Scholarships							33 ⁽³⁾
Total with support	292	291	269	269	276	254	317
Self-Support	161	153	172	131	123	143	86
TOTALS	453	444	441	400	399	397	403
% Students receiving some financial aid	64.4	65.5	61.0	67.2	69.2	63.6	78.6

(1) Financial aid for Accountancy graduate student (5th year) started

(2) Includes one Hearst Assistantship

(3) Counted as Self-Support prior to 2002-03

**TABLE 13 (CONT). SOURCES OF FINANCIAL AID
1996-1997 TO 2002-2003**

BIOMEDICAL SCIENCES PROGRAMS

<u>Year</u>	<u>96-97</u>	<u>97-98</u>	<u>98-99</u>	<u>99-00</u>	<u>00-01</u>	<u>01-02</u>	<u>02-03</u>
<u>Graduate School Support</u>							
Grad Fellowships	54	56	56	60	67	68	66
Dean's Fellowships	2	4	0	0	0	0	2
Scholarships/FT							4
<u>Other Departmental Sources</u>							
Res/Dev Funds	0	1	0	1	1	11	7
Total	56	61	56	61	68	79	79
<u>External support</u>							
Research Grants	47	44	35	42	43	43	65
Training Grants	16	21	39	42	40	47	45
NRSA/NSF/HH/US Army/Packard/AHA/PG	6	4	10	10	12	10	11
Total	69	69	84	94	95	100	121
Total with support	125	130	140	155	163	179	200
% Students with external support	55.2	53.1	60.0	60.6	58.3	56	61
Self-Support/unclass	36	36	30	16/12	17/7	20/9	17/22
TOTALS	161	166	170	183	187	208	239
% Students receiving some financial aid	77.6	78.3	82.3	84.7	87.2	86	84

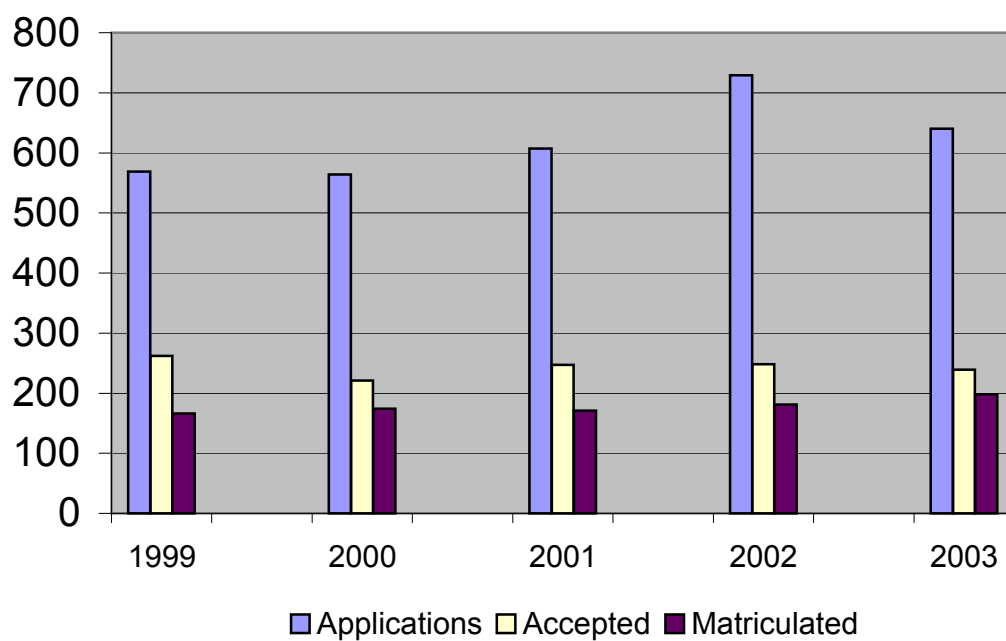
ADDENDUM

Selected Tables with information in graphical format.

**TABLE 2. APPLICATION STATISTICS
1999-2003**

REYNOLDA CAMPUS PROGRAMS

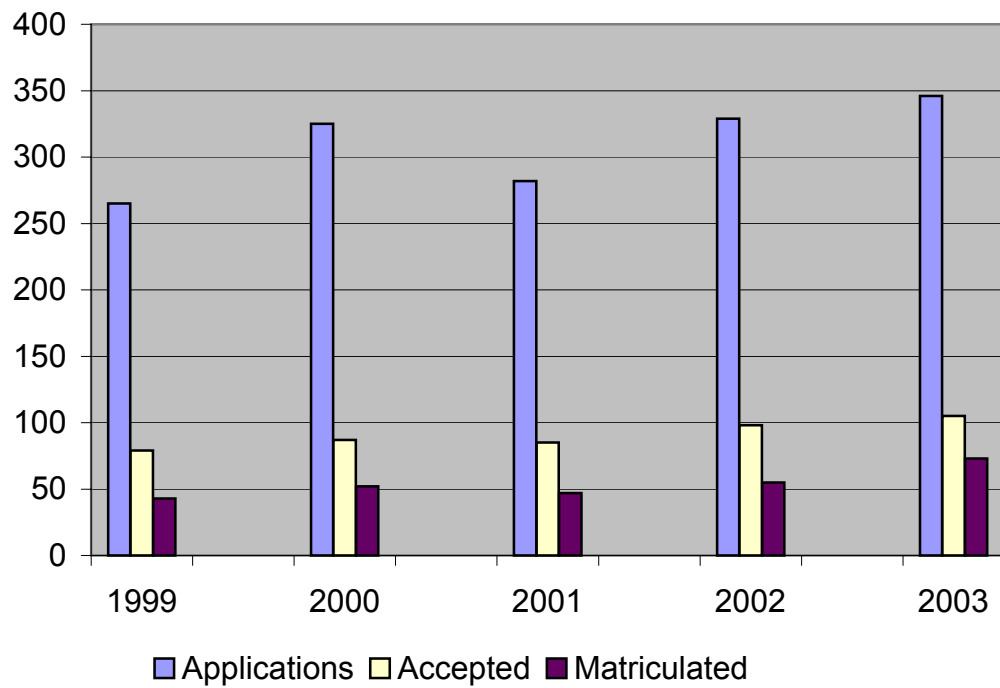
Year	Applications	Accepted	Matriculated
1999	569	262	166
2000	564	221	174
2001	607	247	171
2002	729	248	181
2003	640	239	198



**TABLE 2 (CONT). APPLICATION STATISTICS
1999-2003**

BIOMEDICAL SCIENCES PROGRAMS

Year	Applications	Accepted	Matriculated
1999	265	79	43
2000	325	87	52
2001	282	85	47
2002	329	98	55
2003	346	105	73



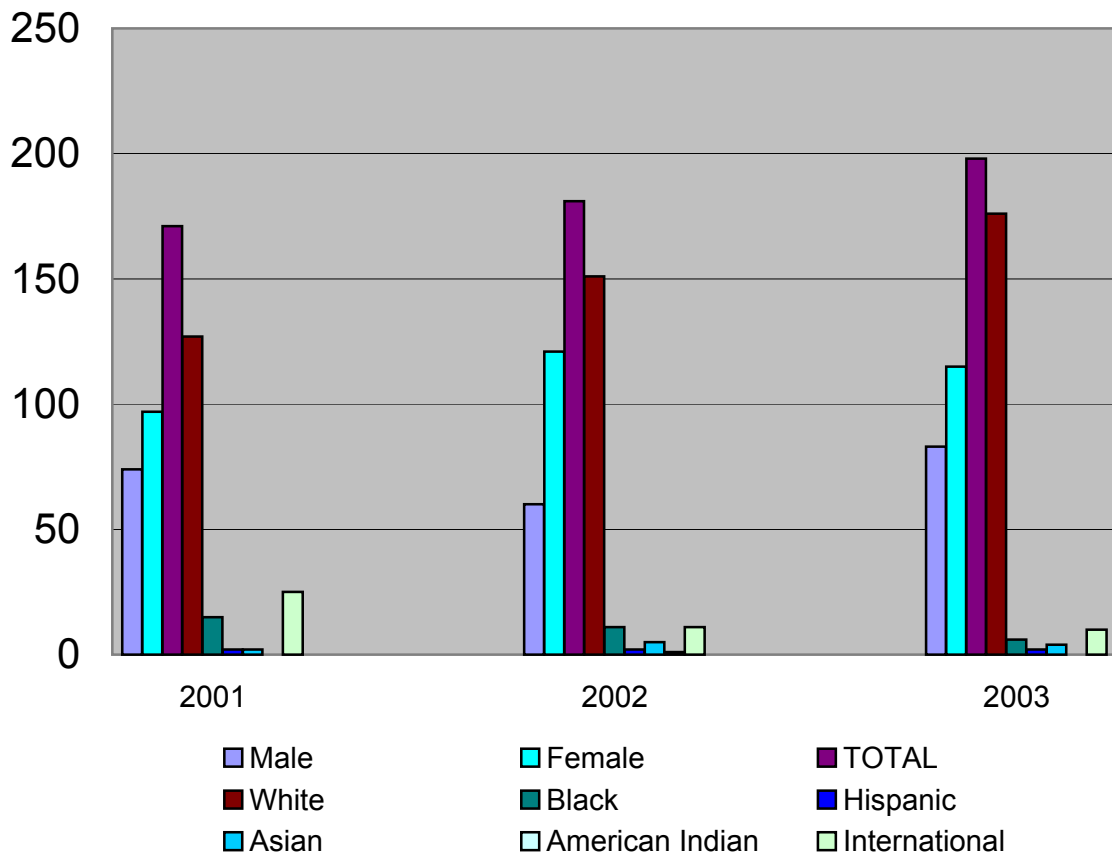
**TABLE 3. STUDENT PROFILE, MATRICULANTS
FALL 2001-FALL 2003**

REYNOLDA CAMPUS PROGRAMS

Year	Male	Female	TOTAL	White	Black	Hispanic	Asian*	American Indian	International#
2001	74	97	171	127	15	2	2	0	25
2002	60	121	181	151	11	2	5	1	11
2003	83	115	198	176	6	2	4	0	10

*U.S. Address, Asian Ethnicity

#Non-U.S. Address, Ethnicity not checked



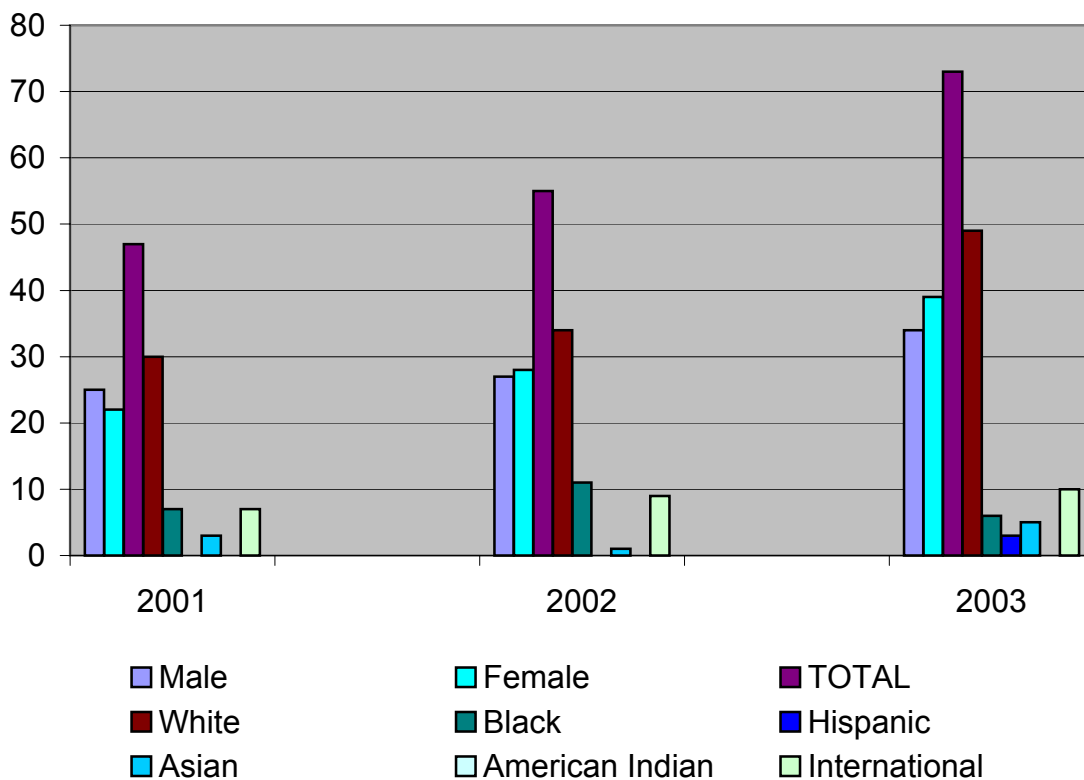
**TABLE 3 (CONT). STUDENT PROFILE, MATRICULANTS
FALL 2001-FALL 2003**

BIOMEDICAL SCIENCES PROGRAMS

Year	Male	Female	TOTAL	White	Black	Hispanic	Asian*	American Indian	International#
2001	25	22	47	30	7	0	3	0	7
2002	27	28	55	34	11	0	1	0	9
2003	34	39	73	49	6	3	5	0	10

*U.S. Address, Asian Ethnicity

#Non-U.S. Address, Ethnicity not checked



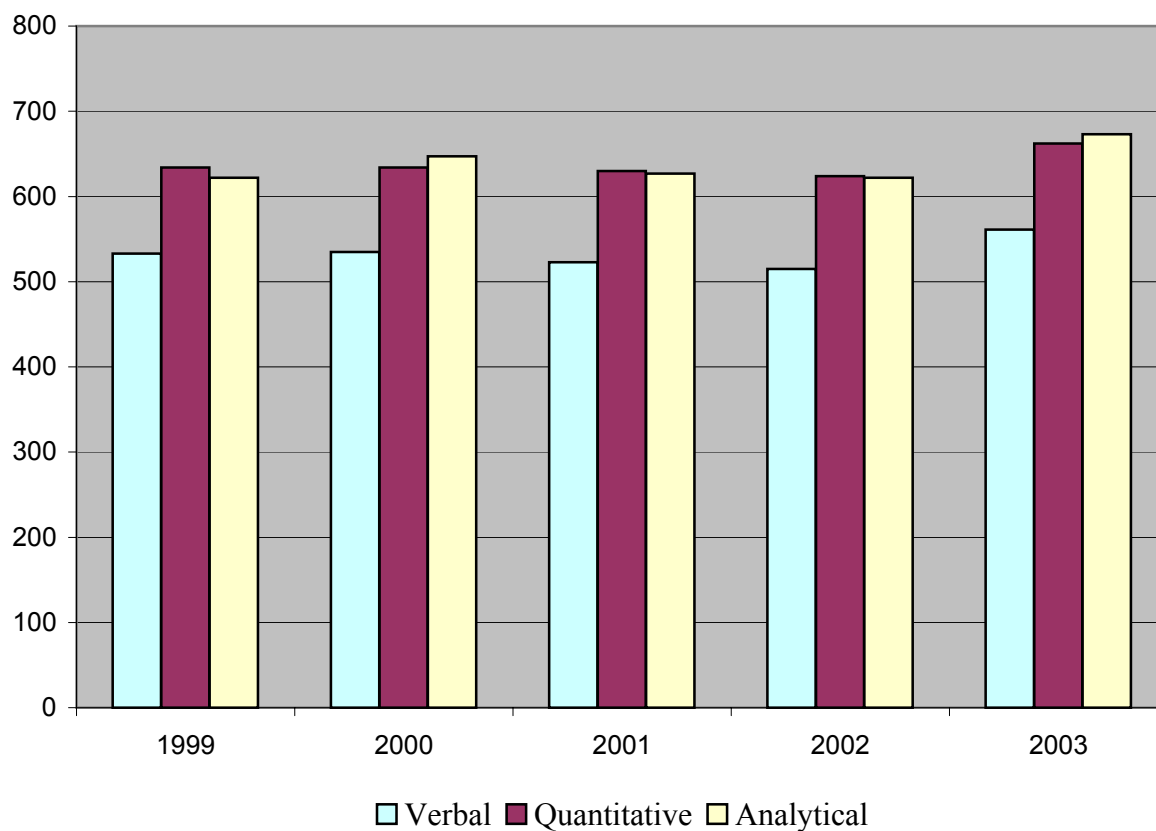
**TABLE 6. STANDARDIZED TEST SCORES FOR MATRICULATED STUDENTS
GRADUATE RECORD EXAMINATION (GRE) SCORES**

REYNOLDA CAMPUS PROGRAMS

Year (Fall)	Verbal	Quantitative	Analytical
1999	533	634	622
2000	535	634	647
2001	523	630	627
2002	515	624	622
2003	561	662	673

National mean all takers:

1998-2001	469	584	560
-----------	-----	-----	-----



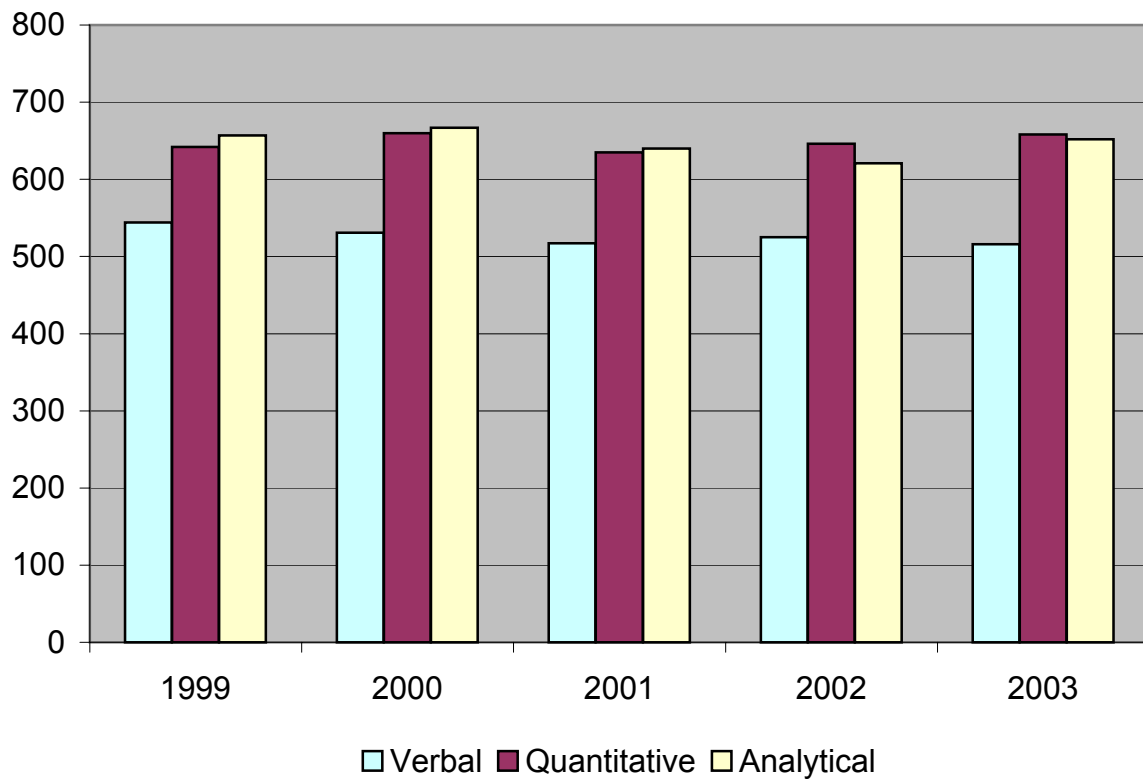
**TABLE 6 (CONT). STANDARDIZED TEST SCORES FOR
MATRICULATED STUDENTS
GRADUATE RECORD EXAMINATION (GRE) SCORES**

BIOMEDICAL SCIENCES PROGRAM

Year (Fall)	Verbal	Quantitative	Analytical
1999	544	642	657
2000	531	660	667
2001	517	635	640
2002	525	646	621
2003	516	658	652

National mean all takers:

1998-2001	469	584	560
-----------	-----	-----	-----



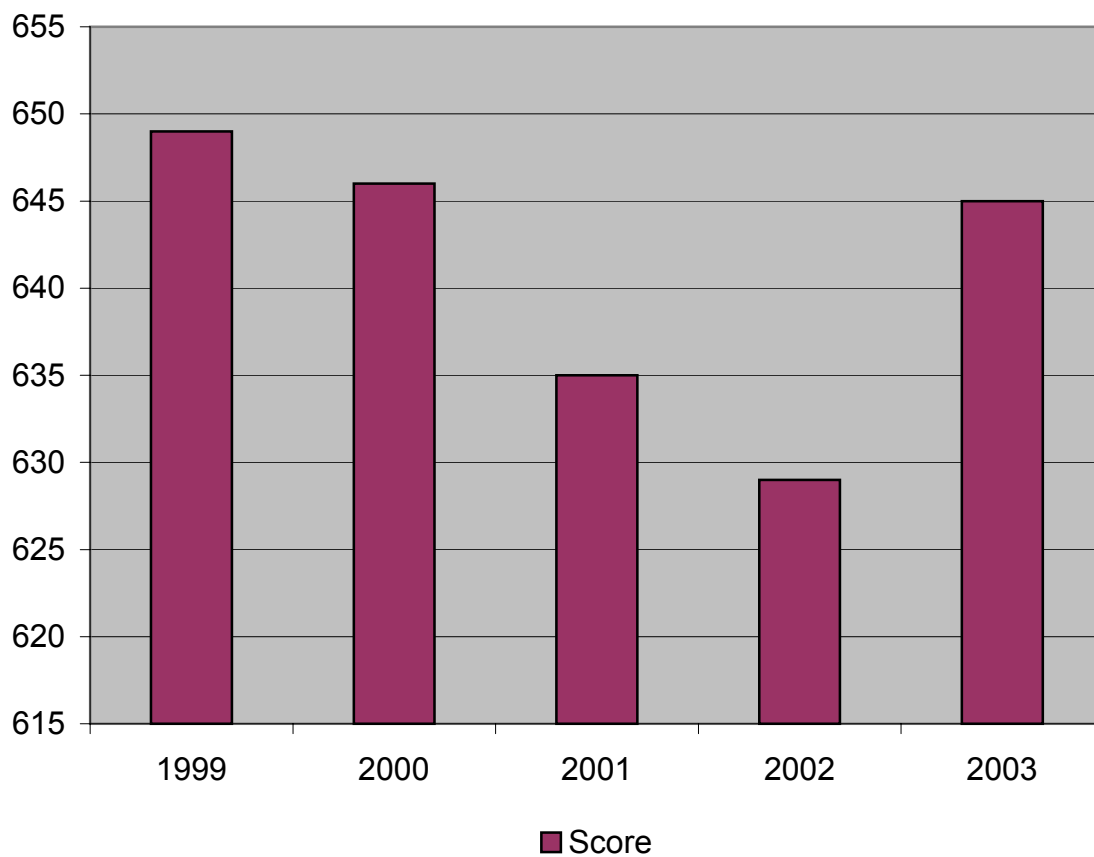
**TABLE 6 (CONT). STANDARDIZED TEST SCORES FOR MATRICULATED STUDENTS
GRADUATE MANAGEMENT ADMISSIONS TEST (GMAT) SCORES**

ACCOUNTANCY PROGRAM

Year (Fall)	Score	(%)*
1999	649	
2000	646	(84%)
2001	635	(81%)
2002	629	(80%)
2003	645	(81%)

National Mean (50%), all takers:

1997-2000 527

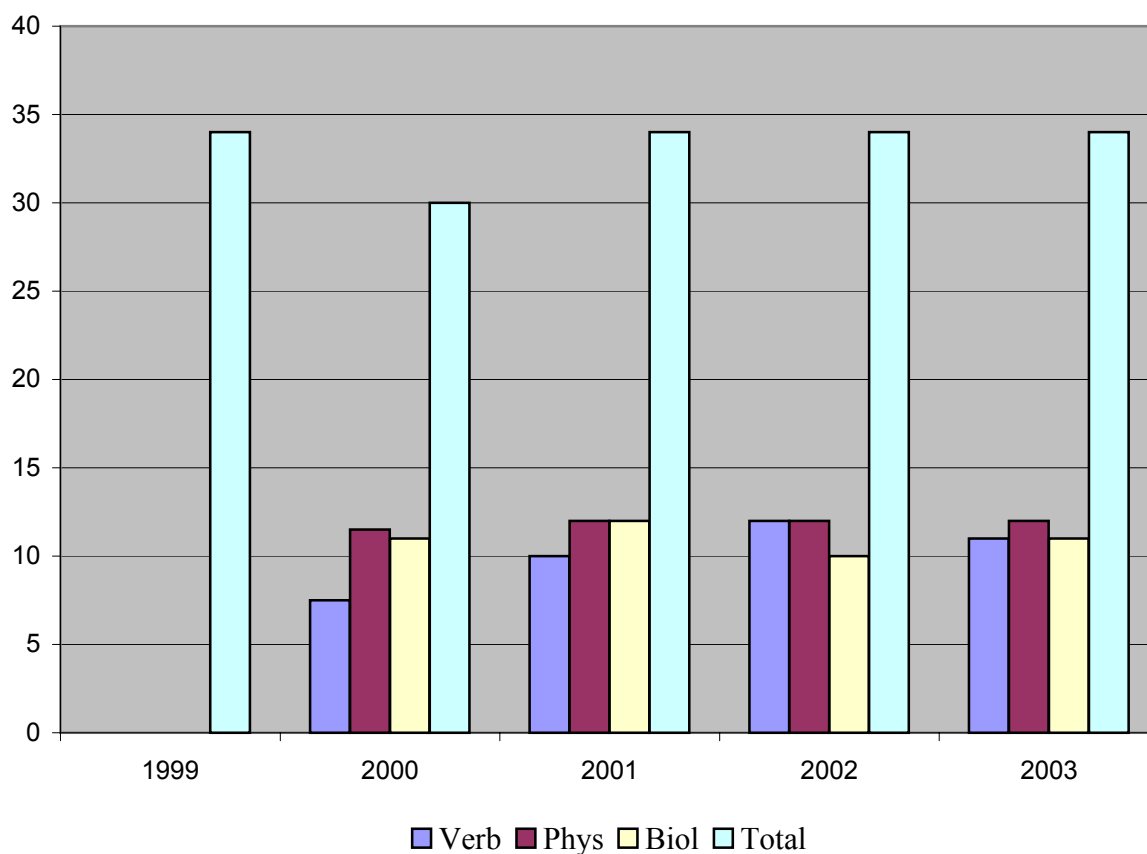


*Percent of examinees scoring lower than stated score

**TABLE 6 (CONT). STANDARDIZED TEST SCORES FOR MATRICULATED
STUDENTS MEDICAL COLLEGE ADMISSIONS TEST (MCAT) SCORES**

MD/PhD PROGRAM

Year (Fall)	Verb	Phys	Biol	Total
1999	0	0	0	34
2000	7.5	11.5	11	30
2001	10	12	12	34
2002	12	12	10	34
2003	11	12	11	34

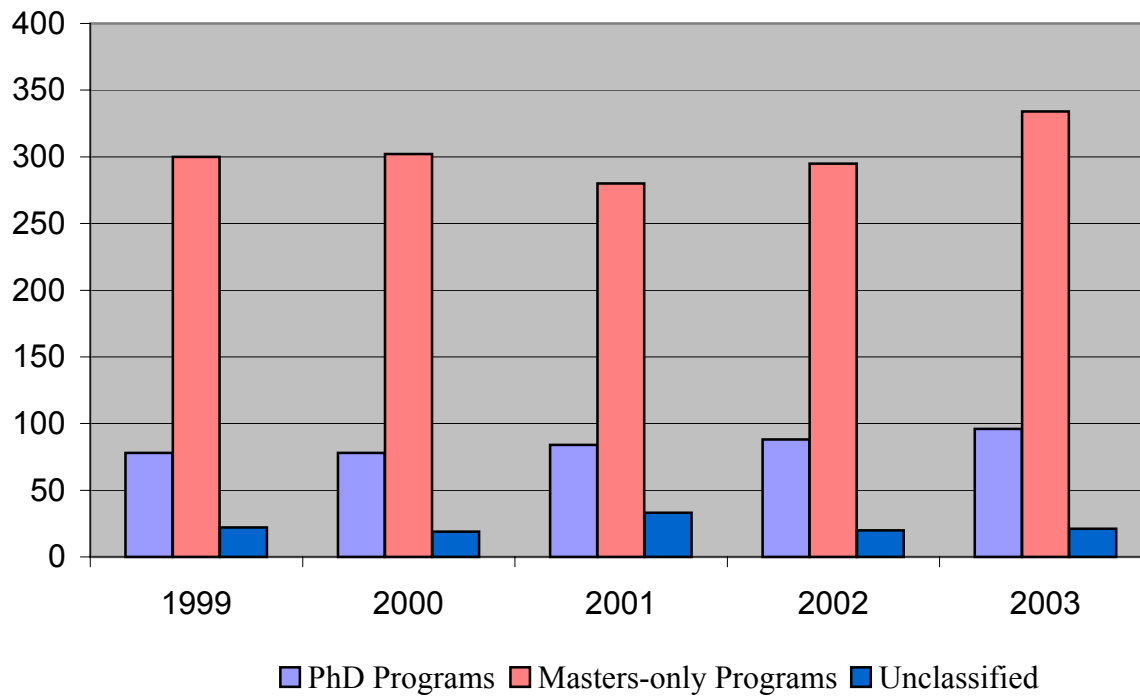


**TABLE 7. STUDENT ENROLLMENT
FALL 1999-FALL 2003**

REYNOLDA CAMPUS PROGRAMS

	1999	2000	2001	2002	2003
PhD Programs	78	78	84	88	96
Masters-only Programs*	300	302	280	295	334
Unclassified	22	19	33	20	21
TOTAL	400	399	397	403	451

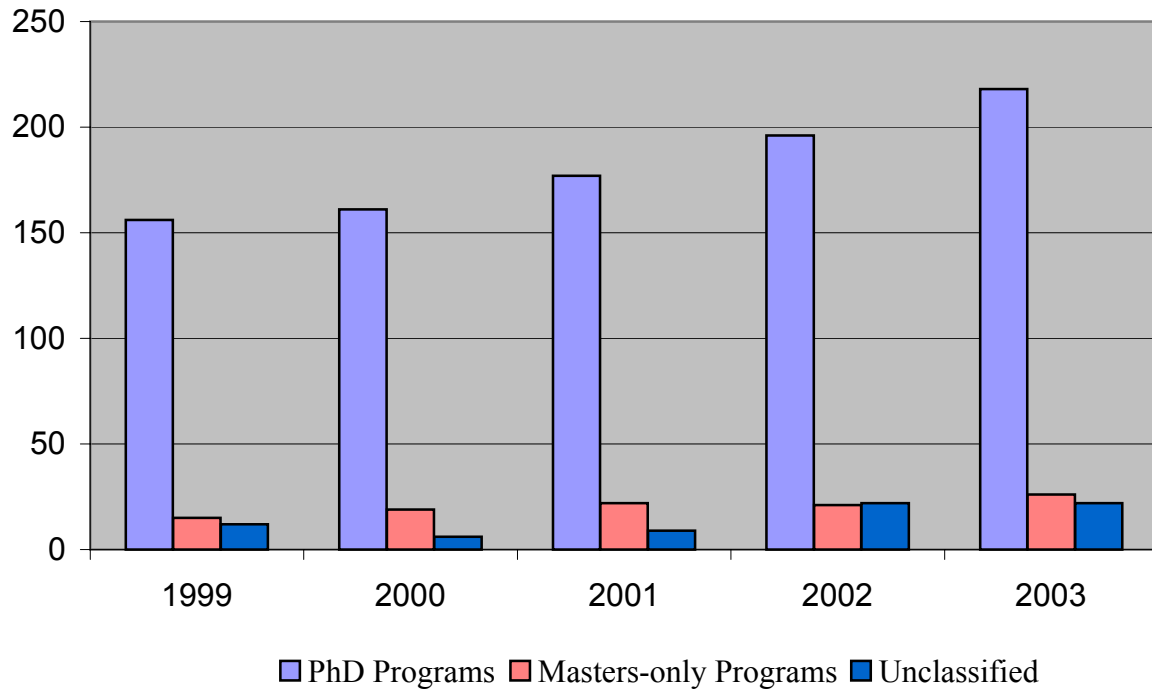
*Masters-only Programs do not
include 4th year Accountancy students



**TABLE 7 (CONT). STUDENT ENROLLMENT
FALL 1999-FALL 2003**

BIOMEDICAL SCIENCES PROGRAMS

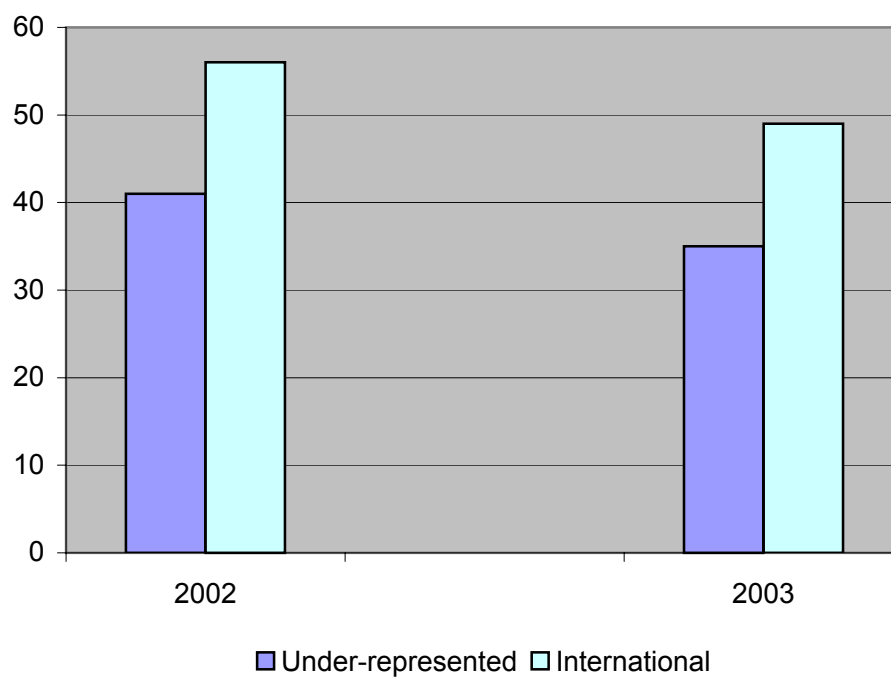
	1999	2000	2001	2002	2003
PhD Programs	156	161	177	196	218
Masters-only Programs	15	19	22	21	26
Unclassified	12	6	9	22	22
TOTAL	183	186	208	239	266
TOTAL (ALL PROGRAMS)	583	585	605	642	717



**TABLE 8. STUDENT PROFILE, TOTAL ENROLLMENT, DEGREE-SEEKING STUDENTS
FALL 2002, FALL 2003**

REYNOLDA CAMPUS PROGRAMS

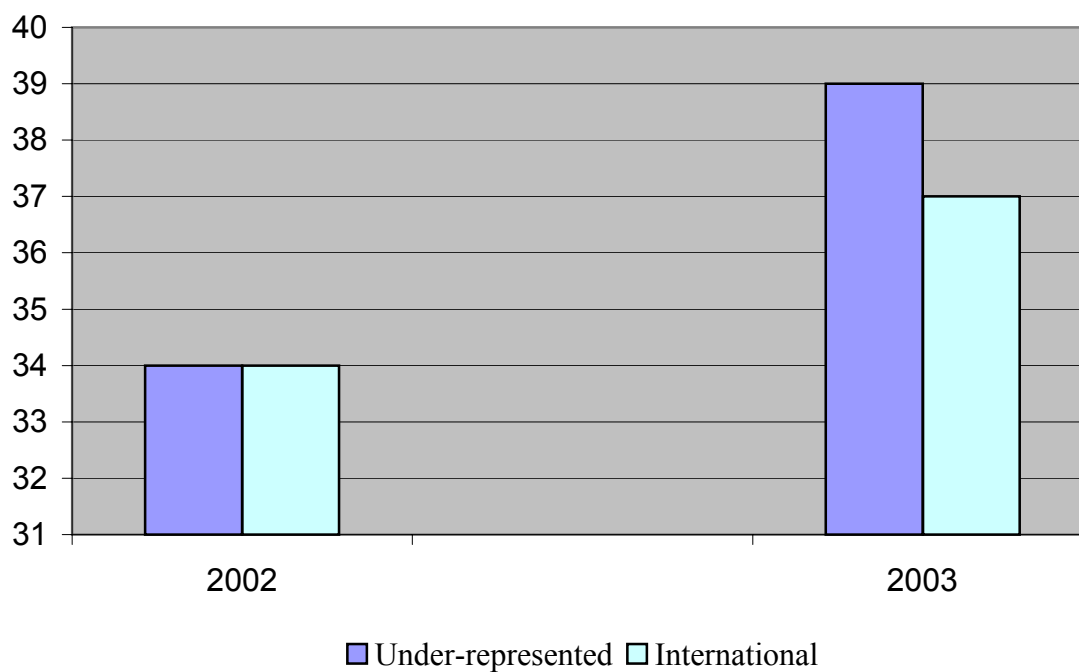
	Under-represented	International
2002	41	56
2003	35	49



**TABLE 8 (CONT). STUDENT PROFILE, TOTAL ENROLLMENT,
DEGREE-SEEKING STUDENTS
FALL 2002, FALL 2003**

BIOMEDICAL SCIENCES PROGRAMS

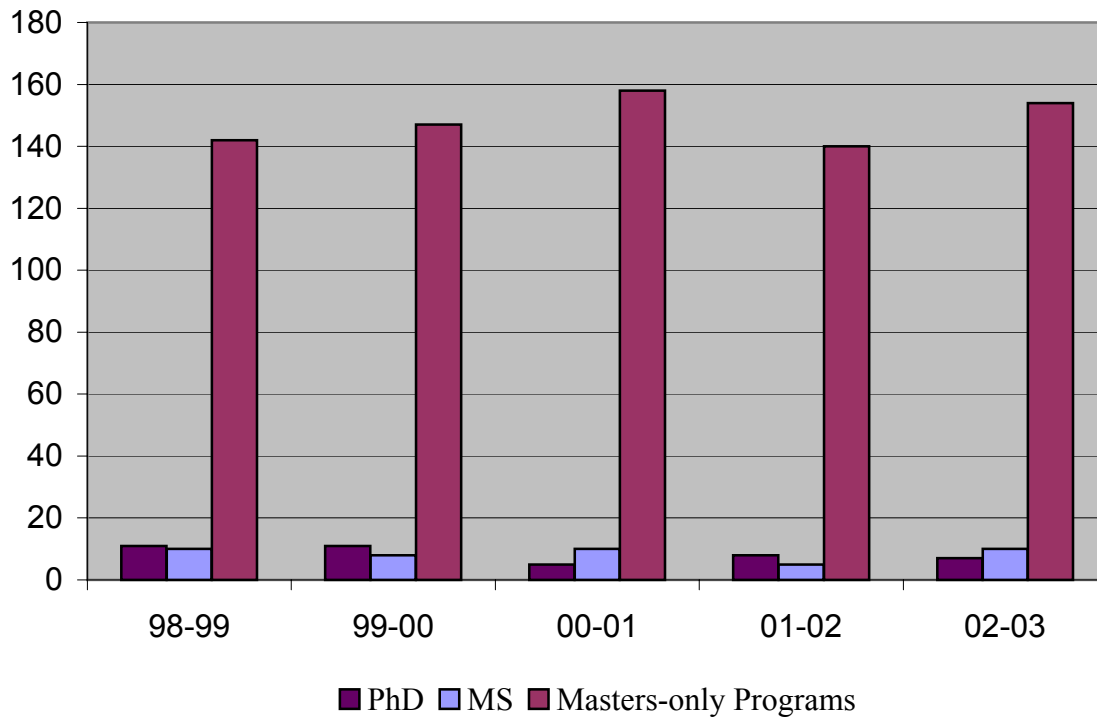
	Under-represented	International
2002	34	34
2003	39	37



**TABLE 10. DEGREES AWARDED
1998-1999 TO 2002-2003**

REYNOLDA CAMPUS PROGRAMS

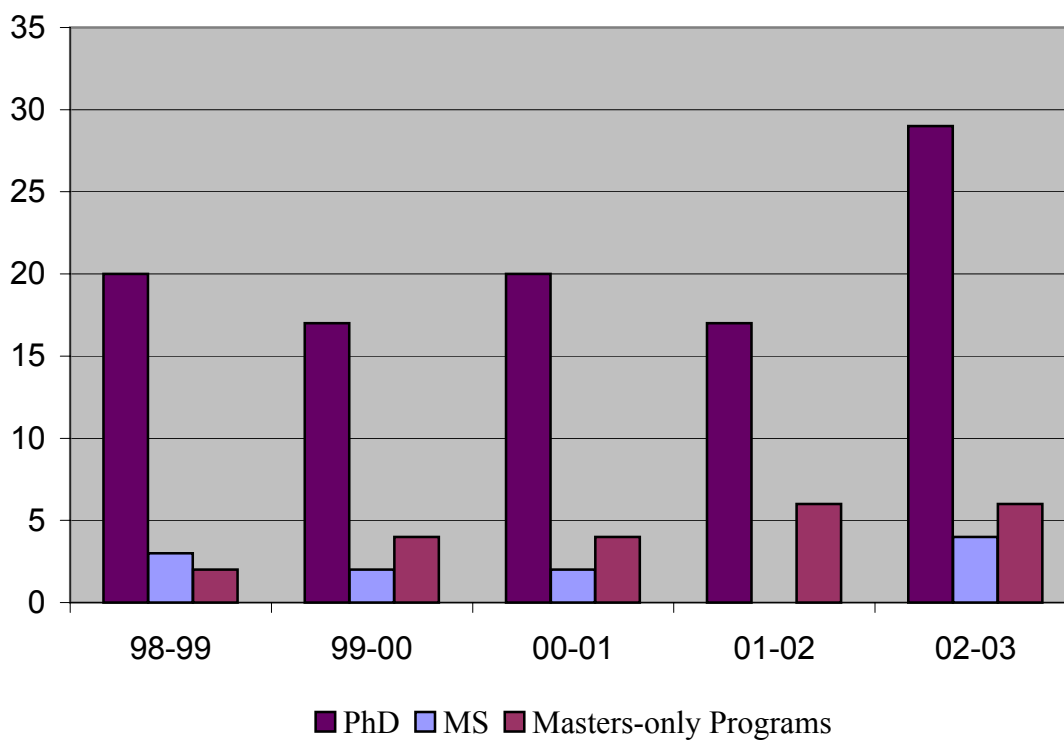
	98-99	99-00	00-01	01-02	02-03
PhD	11	11	5	8	7
MS	10	8	10	5	10
Masters-only Programs	142	147	158	140	154
TOTAL	163	166	173	153	171



**TABLE 10 (CONT). DEGREES AWARDED
1998-1999 TO 2002-2003**

BIOMEDICAL SCIENCES PROGRAMS

	98-99	99-00	00-01	01-02	02-03
PhD	20	17	20	17	29
MS	3	2	2	0	4
Masters-only Programs	2	4	4	6	6
TOTAL	25	23	26	23	39



**TABLE 10 (CONT). DEGREES AWARDED
1998-1999 TO 2002-2003**

ALL PROGRAMS

	98-99	99-00	00-01	01-02	02-03
PhD	31	28	25	25	36
MS	13	10	12	5	14
Masters-only Programs	144	151	162	146	160
TOTAL	188	189	199	176	210

