

## CONTACT INFORMATION

WFU Graduate School of Arts and Sciences  
Biomedical Sciences, Bowman Gray Campus  
Suite 150, 525 Vine Street  
Winston-Salem, NC 27101

p 336-716-4224 | 1-800-438-4723  
f 336-716-0185 | bggrad@wakehealth.edu

**Graduate School:**

[HTTP://GRADUATE.WFU.EDU](http://graduate.wfu.edu)

**Online Application:**

[HTTP://GRADUATE.WFU.EDU/ADMISSIONS/ONLINE.HTML](http://graduate.wfu.edu/admissions/online.html)

**Program Website:**

[HTTP://GRADUATE.WFU.EDU/ADMISSIONS/BMSC.HTML](http://graduate.wfu.edu/admissions/bmsc.html)

## FINANCIAL AID

Students who enter directly into the MS program will not receive a stipend and will pay tuition. Domestic applicants have the option of applying for external financial aid in the form of loans or scholarships. Depending on the availability of funds, partial tuition scholarships may be available. International applicants will need to demonstrate their ability to pay the cost of study including living expenses.

Questions and assistance in applying for financial aid should be directed to the Financial Aid Office at 336-716-4264 or via email [finaid@wakehealth.edu](mailto:finaid@wakehealth.edu).



# Masters Program in Biomedical Science



## OVERVIEW

The Master of Science in Biomedical Science (BMSC) degree is a full-time, graduate degree option that is designed to help students with a bachelor's degree, preferably with a major in the sciences, improve their academic foundation in the biomedical sciences, and augment their credentials for admission into health professional programs, PhD study in the sciences, or entrance into the workforce.

Our MS program offers a pre-medical post-baccalaureate component. This option will aid students who have already completed medical school prerequisites to increase their competitiveness for health professional school admissions or other medical science careers. Applicants who wish to complete the MS program as preparatory to medical school should select the "Biomedical Science/PB-MS" program on the on-line application.

### *Areas of Specialization:*

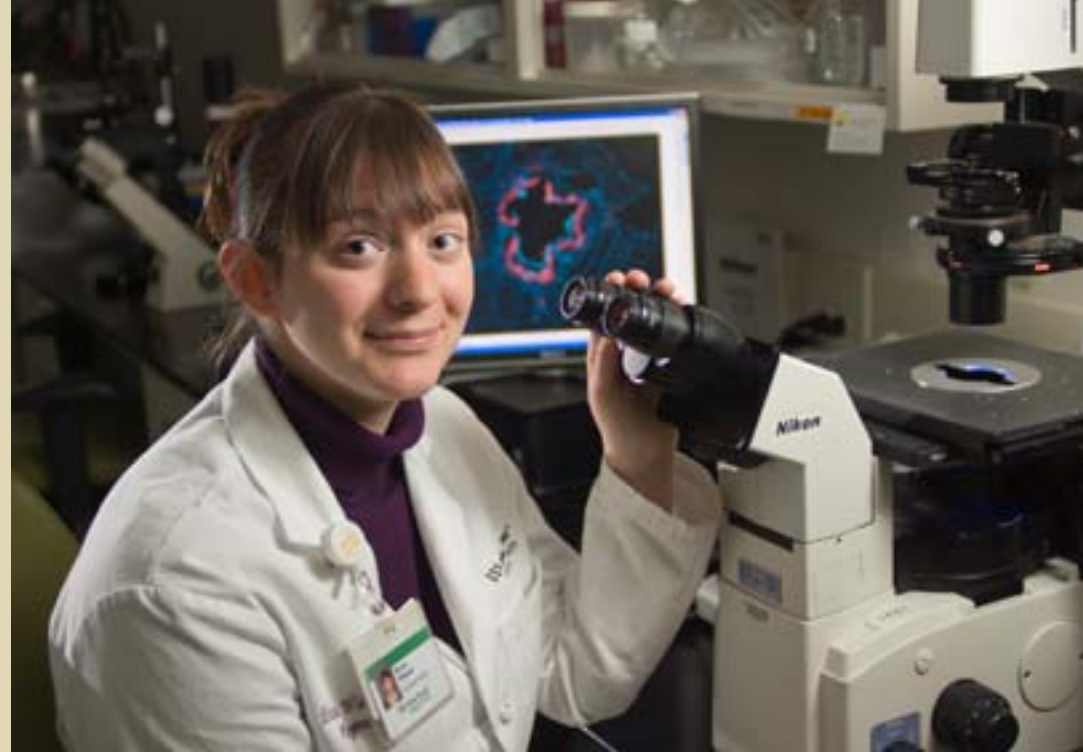
- Molecular and Cellular Biosciences
- Pre-Medical Post-baccalaureate

### *Areas of Concentration:*

- Integrative Physiology and Pharmacology
- Neuroscience

In addition to the selection of an area of specialization, students will be able to select from one of four available options.

- Thesis
- Non-Thesis
- Research Project
- Summer Internship



## APPLICATION REQUIREMENTS

Competitive applicants will possess a strong undergraduate transcript in one of the following disciplines -- Molecular and Cellular Biology, Neuroscience, or Physiology and Pharmacology or related disciplines of Biology, Chemistry, Engineering, Psychology, or Mathematics. Applicants who wish to pursue a thesis option should outline their involvement in undergraduate research in their personal statement.

### *Checklist:*

- Submission of application
- \$75 application fee
- Personal Statement
- Testing:
  - GRE Test Report | GRE or MCAT for Pre-Medical Postbac component.
  - TOEFL (or IELTS) is required for international students who have not obtained an undergraduate degree from a U.S. institution.
  - Institutional codes: GRE and TOEFL—5920; MCAT—3168 (The IELTS does not require an institutional code).
- Transcripts (unofficial acceptable for review process)
- 3 Recommendations

