

FACULTY COMMONS WINTER

TEACHING SUPPORT



Instructional Design Support

DECEMBER - JANUARY

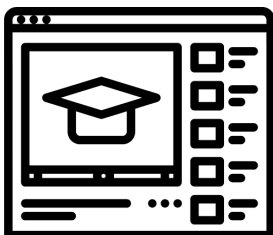
Any faculty teaching online or blended courses can sign up for instructional design support from the Office of Online Education. OOE instructional designers are experts in online education who can help instructors design online courses; develop quality digital media; cultivate community; engage all learners; and create meaningful assignments and assessments. Instructors can sign up for an initial consultation using the school-specific links below.

School of Business

School of Divinity

School of Law

College of Arts & Sciences



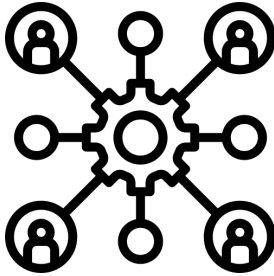
Teaching Online @ Wake

DECEMBER - JANUARY

The Office of Online Education has designed an asynchronous, on-demand Canvas course for all faculty teaching online or blended courses. The materials allow instructors to work at their own pace, providing flexibility to work on their course while

learning. Topics include: getting started online; creating a community; designing for online; and engaging all learners.

Enroll



Winter Peer Learning Community

JANUARY 11TH - 15TH

Instructors who were not able to participate in our summer learning communities will be eligible to participate in an abbreviated Winter Peer Learning Community from January 11th - 15th. This PLC will be facilitated by CAT staff and limited to 20 instructors. Each participant will receive a \$500 stipend for at least 20 hours of synchronous and asynchronous work. Interested faculty should submit a brief application by **Friday, December 18th**.

Apply



Canvas Week

JANUARY 11TH - 15TH

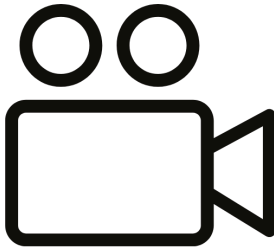
Academic Technologies will be offering a week of focused Canvas training sessions from January 11th - 15th. Register at the links below.

[General Overview](#)

[Pages and Modules](#)

[Quizzes and Grading](#)

[Assignments and Grading](#)



Kaltura Workshops

DECEMBER - JANUARY

Throughout December and January, the Kaltura Support Team will be offering Kaltura Training Virtshops for faculty and staff. Kaltura is the new WFU Video Management Platform. It is a suite of media tools that streamlines the media production process. With it, you can record, edit, store, and share media content. In these VirtShops we will explore the possibilities of Kaltura as a pedagogical tool. Participants will learn the basics of the Kaltura interface and do some hands-on workshopping.

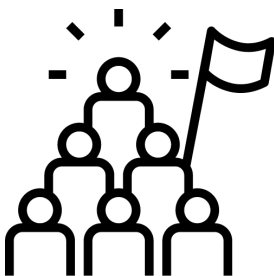
Getting Started

Creating a Playlist & Channels

Recording a Lecture & Slides

In-Video Quizzing

Using Interactive Video



Summer PLC Reunions

DECEMBER - JANUARY

Peer facilitators from Summer Peer Learning Communities will work with the CAT to coordinate reunions for their groups. These reunions are optional. Watch your email for more information from your peer facilitator.



Fall Challenge Workshops

JANUARY 11TH - 15TH

The CAT will be offering workshops on the most common teaching and learning challenges instructors experienced this fall. These workshops will be offered over lunch the week of January 11th. Register at the links below.

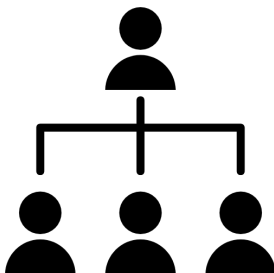
Student Workload

Online Assessment

Students in Quarantine

Zoom Fatigue

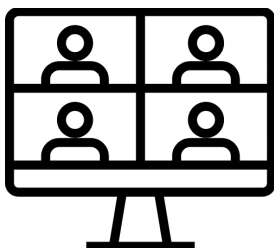
Trauma-Informed Pedagogy



Department Support

DECEMBER - JANUARY

The Office of Online Education can provide targeted programmatic support for schools and departments. They can assist units by developing course templates, troubleshooting issues that have arisen across multiple courses, or providing structured instructional design for high enrollment and/or gateway courses.



Zoom & Captioning Workshops

DECEMBER - JANUARY

Academic Technologies will be offering basic and advanced workshops on Zoom, as well as workshops on captioning, throughout July. Register at the links below.

Zoom Basics

What's New in Zoom 2.0?

Intermediate Zoom

Introduction to Captioning

This email was sent to <<Wake Forest Email Address>>
[why did I get this?](#) [unsubscribe from this list](#) [update subscription preferences](#)
Wake Forest University · 1834 Wake Forest Rd · ZSR Library, 6th Floor Wilson Wing · Winston Salem, NC 27109-6000 · USA