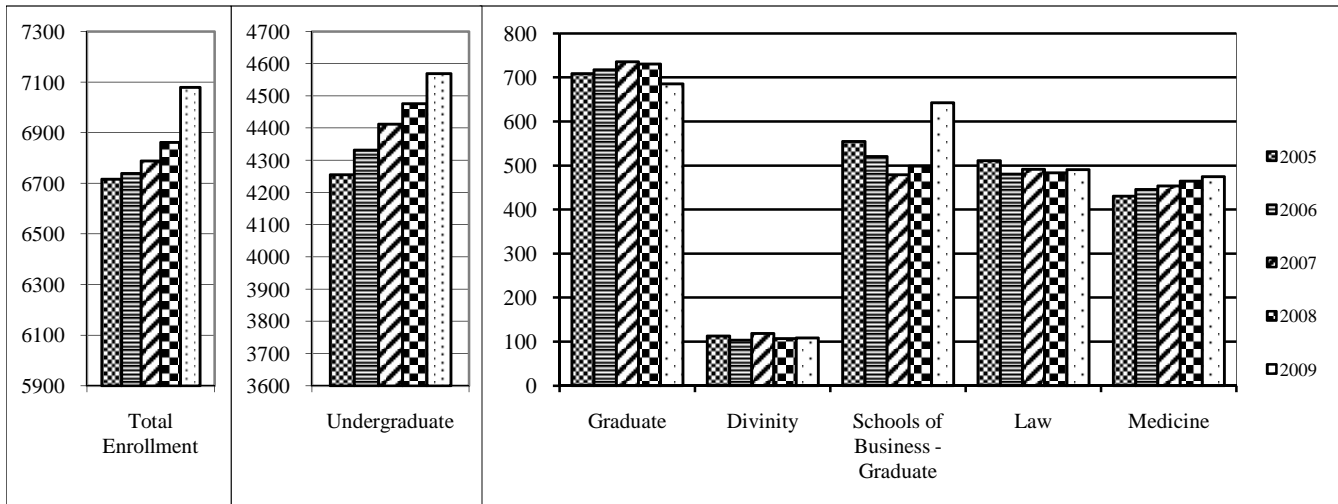


Enrollment by School, Fall 2005-2009



Enrollment by Class and by School, Fall 2009

	Male	Female	Total	FTE*
Freshmen [†]	588	643	1,231	1229.50
Sophomores	585	613	1,198	1197.25
Juniors	542	535	1,077	1075.00
Seniors	517	537	1,054	1033.75
Unclassified	5	4	9	5.00
Total Undergraduates	2,237	2,332	4,569	4540.50
<i>Study Abroad</i>	<i>115</i>	<i>224</i>	<i>339</i>	<i>339.00</i>
<i>Reynolda Campus</i>	<i>2,122</i>	<i>2,108</i>	<i>4,230</i>	<i>4201.50</i>
Graduate - Arts & Sciences	197	218	415	380.50
Graduate - Medicine	111	160	271	259.00
Divinity	57	52	109	105.50
Schools of Business-Graduate	442	201	643	642.50
Law School	288	203	491	491.00
Medical School	256	219	475	475.00
Physician Assistant	19	87	106	106.00
University Total	3,607	3,472	7,079	7000.00

*Full-time equivalent

Source: IPEDS-Fall Enrollment 2009

[†]Includes all first-time, first-year students, even those with advanced standing

