



Fact Book 2009-2010

Wake Forest University

Office of Institutional Research



Wake Forest University

Fact Book 2009-2010

Nineteenth Edition – March 2010

Reynolda Campus

Wake Forest College, Schools of Business, School of Law,
Graduate School, and Divinity School

Bowman Gray Campus

Wake Forest University School of Medicine (includes Physician
Assistant Program) and Graduate School

Office of Institutional Research

Ross A. Griffith, Director
Adam W. Shick, Associate Director
Sara R. Gravitt, Assistant Director
Joshua A. DeBenedetto, Graduate Assistant

P. O. Box 7373 Reynolda Station, Winston-Salem, NC 27109 (336) 758-5244

Web site: <http://www.wfu.edu/ir>

Table of Contents

General Information

History	1
Mission Statement.....	1
Statement of Principle on Diversity.....	2
Chronological History.....	2
Accreditation.....	3
Board of Trustees.....	4
Administration (Executive Council).....	4
Presidents	4
Administrative Organizational Charts	5
Academic Programs	7
Information Systems	8
Libraries	9

Students

Admissions, Fall 2009	10
Admissions, First-time Freshmen and Transfer Students.....	11
High School Rank and SAT Scores for Entering Freshmen.....	12
Average GRE Scores, Graduate School	13
Fall Enrollment for the University, 1990-2009	14
Fall Enrollment by School and by Class.....	15
Ethnic Enrollment	16
University Ethnic Enrollment	17
Undergraduate Greek Affiliation	18
Undergraduate Religious Preference	19
North Carolina Undergraduate Students by County of Residence	20
Undergraduate Geographic Distribution by Region	21
Undergraduate Geographic Distribution by Region and State of Residence.....	22
Undergraduates from the U.S. and Other Countries.....	23
Total Number of Degrees Granted, 1990-2009	24
Number and Type of Degrees Granted, 2008 and 2009	25
Number and Type of Degrees Granted by School, 2005-2009.....	26
Graduates by Double Majors, 2008-2009.....	27
Graduates by Minor, 2008-2009	28
Undergraduates and Senior Graduates Receiving Degree Credits Abroad	29
Undergraduates Receiving Academic Distinction.....	29
Undergraduate Graduation and Retention Rates	30
Placement of 2009 Graduating Class.....	31
Placement of Graduating Classes, 2005-2009	32
Wake Forest Students Applying to Medical School.....	33
Wake Forest Students Applying to Law School.....	34

Faculty and Staff

Teaching Faculty and Faculty by Rank and Gender	35
Full-time Faculty by Ethnicity	36
Teaching Equivalents and Student-to-Faculty Ratio	37
Percentage of Part-time Faculty	37
Tenure of Full-time Instructional Faculty – Reynolda Campus	38
Highest Degree Earned by Faculty – Reynolda Campus.....	38
Tenure of Full-time Instructional Faculty – School of Medicine	39
Highest Degree Earned by Faculty – School of Medicine.....	39
Average Faculty Salary by Rank – Reynolda Campus.....	40
Average Faculty Salaries – College and Calloway.....	40
Full-time Staff by Category, Gender, and Ethnicity.....	41

Facilities

Main Facilities Reynolda Campus, and Gross Square Feet by Decade.....	42
Student Housing Utilization.....	43

Finances

First-year Student Tuition and Undergraduate Financial Aid	44
Annual Tuition/Fees for "Most Competitive" Private Universities.....	45
Undergraduate Student Financial Aid Programs	46
Undergraduate Financial Aid by Source.....	47
Average Instructional Dollars Expended Per Undergraduate Student	47
Research Grants by Fund Source and by Discipline – Reynolda Campus	48
Research Grants by Fund Source and by Discipline – Bowman Gray Campus	49
Sources of Revenue – Reynolda Campus	50
Expenditures – Reynolda Campus	51
Sources of Revenue – Bowman Gray Campus	52
Expenditures – Bowman Gray Campus	53
Summary of Total Giving to Wake Forest.....	54
Market Value of Endowment.....	54
Charitable Contributions by Category	55
Alumni Giving Percentage.....	55



General Information



History of Wake Forest University

Wake Forest Institute was founded in 1834 by the Baptist State Convention of North Carolina. The school opened its doors on February 3 with Samuel Wait as principal. Classes were first held in a farmhouse on the Calvin Jones plantation in Wake County, North Carolina, near which the village of Wake Forest later developed.

Rechartered in 1838 as Wake Forest College, Wake Forest is one of the oldest institutions of higher learning in the state. The School of Law was established in 1894, followed by a two-year medical school in 1902. Wake Forest was exclusively a college for men until World War II, when women were admitted for the first time.

In 1941, the medical school moved to Winston-Salem to become affiliated with North Carolina Baptist Hospital and was renamed the Bowman Gray School of Medicine. In 1946, the trustees of Wake Forest and the Baptist State Convention of North Carolina accepted a proposal by the Z. Smith Reynolds Foundation to relocate the College to Winston-Salem. The late Charles and Mary Reynolds Babcock donated much of the R.J. Reynolds family estate as the site for the campus and building funds were received from many sources. From 1952 to 1956, the first fourteen buildings were constructed in Georgian style on the new campus. The move to Winston-Salem took place in the summer of 1956; the original, or "old" campus, is now home to Southeastern Baptist Theological Seminary.

Following the move, Wake Forest grew considerably in enrollment, programs, and stature and became a University in 1967. The School of Business Administration, first established in 1948, was named the Charles H. Babcock School of Business Administration in 1969 and admitted its first graduate students in 1971. In 1972, the school enrolled only graduate students and the name was changed to the Babcock Graduate School of Management; departments of business and accountancy and economics were established in the College. In 1980, the Department of Business and Accountancy was reconstituted as the School of Business and Accountancy; the name was changed to the Wayne Calloway School of Business and Accountancy in 1995.

The Division of Graduate Studies, established in 1961, is now organized as the Graduate School and encompasses advanced work in the arts and sciences on both the Reynolda and Bowman Gray campuses. In 1997, the medical school was renamed the Wake Forest University School of Medicine; its campus is now known as the Bowman Gray Campus. The Divinity School was established in 1999.

Wake Forest honors its Baptist Heritage in word and deed. The University will fulfill the opportunities for service arising out of that heritage. Governance is now by an independent Board of Trustees; there are advisory boards of visitors for the College and each professional school.

Statement of Purpose

(As approved by the Board of Trustees – March 22, 2002)

Wake Forest is a University dedicated to the pursuit of excellence in the liberal arts and in graduate and professional education. Its distinctiveness in its pursuit of its mission derives from its private, co-educational, and residential character; its size and location; and its Baptist heritage. Each of these factors constitutes a significant aspect of the unique character of the institution.

The University is now comprised of seven constituent parts: two undergraduate institutions, Wake Forest College and the Wayne Calloway School of Business and Accountancy; the Graduate School; and four professional schools: the School of Law, the Wake Forest University School of Medicine, the Babcock Graduate School of Management and the Divinity School. It seeks to honor the ideals of liberal learning, which entail commitment to transmission of cultural heritages; teaching the modes of learning in the basic disciplines of human knowledge; developing critical appreciation of moral, aesthetic and religious values; advancing the frontiers of knowledge through in-depth study and research; and applying and using knowledge in the service of humanity.

Wake Forest has been dedicated to the liberal arts for over a century and a half; this means education in the fundamental fields of human knowledge and achievement, as distinguished from education that is technical or narrowly vocational. It seeks to encourage habits of mind that ask "why," that evaluate evidence, that are open to new ideas, that attempt to understand and appreciate the perspectives of others, that accept complexity and grapple with it, that admit error, and that pursue truth. Wake Forest College has by far the largest student body in the University, and its function is central to the University's larger life. The College and the Graduate School are most singularly focused on learning for its own sake; they, therefore, serve as exemplars of specific academic values in the life of the University.

Beginning as early as 1894, Wake Forest accepted an obligation to provide professional training in a number of fields, as a complement to its primary mission of liberal arts education. This responsibility is fulfilled in the conviction that the humane values embodied in the liberal arts are also centrally relevant to the professions. Professional education at Wake

Forest is characterized by a commitment to ethical and other professional ideals that transcend technical skills. Like the Graduate School, the professional schools are dedicated to the advancement of learning in their fields. In addition, they are specifically committed to the application of knowledge to solving concrete problems of human beings. They are strengthened by values and goals which they share with the College and Graduate School, and the professional schools enhance the work of these schools and the University as a whole by serving as models of service to humanity.

Wake Forest was founded by private initiative, and ultimate decision-making authority lies in a privately appointed Board of Trustees rather than in a public body. Funded to a large extent from private sources of support, Wake Forest is determined to chart its own course in the pursuit of its goals. As a co-educational institution, it seeks to "educate together" persons of both sexes and from a wide range of backgrounds --- racial, ethnic, religious, geographical, socioeconomic, and cultural. Its residential features are conducive to learning and the pursuit of a wide range of co-curricular activities. It has made a conscious choice to remain small in overall size; it takes pride in being able to function as a community rather than a conglomerate. Its location in the Piedmont area of North Carolina engenders an ethos that is distinctively Southern, and more specifically North Carolinian. As it seeks further to broaden its constituency and to receive national recognition, it is also finding ways to maintain the ethos associated with its regional roots.

Wake Forest is proud of its Baptist and Christian heritage. For more than a century and a half, it has provided the University an indispensable basis for its mission and purpose, enabling Wake Forest to educate thousands of ministers and laypeople for enlightened leadership in their churches and communities. Far from being exclusive and parochial, this religious tradition gives the University roots that ensure its lasting identity and branches that provide a supportive environment for a wide variety of faiths. The Baptist insistence on both separation of church and state and local autonomy has helped to protect the University from interference and domination by outside interests, whether these be commercial, governmental, or ecclesiastical. The Baptist stress upon an uncoerced conscience in matters of religious belief has been translated into a concern for academic freedom. The Baptist emphasis upon revealed truth enables a strong religious critique of human reason, even as the claims of revelation are put under the scrutiny of reason. The character of intellectual life at Wake Forest encourages open and frank dialogue and provides assurance that the University will be ecumenical and not provincial in scope, and that it must encompass perspectives other than the Christian. Wake Forest thus seeks to maintain and invigorate what is noblest in its religious heritage.

Statement of Principle on Diversity

Wake Forest University is a community of men and women that seeks the enlightenment and freedom which come through diligent study and learning. Its higher goal, however, is to give life to the University motto "Pro Humanitate," as members translate a passion for knowledge into compassionate service.

The community shares a tradition that embraces freedom and integrity and acknowledges the worth of the individual. The heritage, established by the school's founders and nurtured by succeeding generations, promotes a democratic spirit arising from open-mindedness and discourse.

Wake Forest fosters compassion and caring for others. Its collective strength and character are derived from the values and distinctive experiences of each individual; therefore, it affirms the richness of human intellect and culture and its contribution to knowledge, faith, reason, and dialogue. Furthermore, it strives toward a society in which good will, respect, and equality prevail. To that end, Wake Forest University rejects hatred and bigotry in any form and promotes justice, honor, and mutual trust.

Chronological History of Wake Forest University

- 1834 Founded in Wake County, N.C., as Wake Forest Manual Labor Institute in cooperation with the N.C. Baptist Convention
- 1838 Named Wake Forest College
- 1894 School of Law established
- 1902 School of Medicine founded
- 1921 First Summer Session
- 1936 Approval of the School of Law by the American Bar Association
- 1941 Relocation of the School of Medicine to Winston-Salem and eventual change of name to Bowman Gray School of Medicine and association with the North Carolina Baptist Hospital
- 1942 Women admitted as undergraduate students
- 1948 School of Business Administration established

- 1956 Move to Winston-Salem in response to an endowment from the Z. Smith Reynolds Foundation
- 1961 Division of Graduate Studies established
- 1967 Became Wake Forest University
- 1969 School of Business Administration renamed Charles H. Babcock School of Business Administration
- 1972 Charles H. Babcock Graduate School of Management enrolled first graduate students. Department of Business and Accountancy and a Department of Economics established in the College.
- 1980 Department of Business and Accountancy renamed School of Business and Accountancy
- 1986 Redefined the relationship with the N.C. Baptist State Convention
- 1995 School of Business and Accountancy changed name to Wayne Calloway School of Business and Accountancy
- 1997 Change of name to Wake Forest University School of Medicine
- 1999 Opening of the Wake Forest University Divinity School
- 2002 Incorporation of Wake Forest University Health Sciences

Accreditation

Wake Forest University is a Member of or Accredited by:

AACSB International – The Association to Advance Collegiate Schools of Business
 American Chemical Society
 American Council on Education
 Accreditation Review Commission on Education for the Physician Assistant of the American Medical Association
 Association of American Colleges
 Association of American Law Schools
 Association of American Medical Colleges
 Association of Theological Schools
 Board of Law Examiners
 Commission on Colleges of the Southern Association of Colleges and Schools
 Council for Accreditation of Counseling and Related Educational Programs
 Council of Graduate Schools
 Council of Southern Graduate Schools
 Council of the North Carolina State Bar
 Council of the Section of Legal Education and Admissions to the Bar of the American Bar Association
 European Foundation for Management Development
 Liaison Committee on Medical Education of the American Medical Association and the Association of American Medical Colleges
 National Accrediting Agency for Clinical Laboratory Sciences
 National Association of Independent Colleges and Universities
 National Council for the Accreditation of Teacher Education
 North Carolina Association of Colleges and Universities
 North Carolina Independent Colleges and Universities
 North Carolina Conference of Graduate Schools
 North Carolina Department of Public Instruction
 Oak Ridge Associated Universities
 Section on Medical Schools of the American Medical Association
 Southern Universities Conference

2009-2010 University Board of Trustees

Diana M. Adams	Jerry H. Baker	Ranlet S. Bell	W. Louis Bissette, Jr.
John I. Bitove, Jr.	Donna A. Boswell	Simpson O. Brown, Jr.	Thomas W. Bunn
Bobby R. Burchfield	Jocelyn Burton	Jermyn M. Davis	Graham W. Denton, Jr.
Thomas A. Dingleline	Candy M. Ergen	Frederick W. Eubank, II	Lisbeth Clark Evans
Lelia B. Farr	James R. Helvey, III	Lawrence D. Hopkins	Alice Kirby Horton
Albert R. Hunt	Susan M. Ivey	James W. Johnston	Matthew A. King
Deborah D. Lambert	Donald D. Leonard	John R. Lowden	John K. Medica
Kenneth D. Miller	Richard H. Moore	Celeste M. Pittman	Harold O. Rosser
Andrew J. Schindler	Adelaide A. Sink	K. Wayne Smith	Janice K. Story
Benjamin C. Sutton, Jr.	Lloyd P. Tate, Jr.	J. Lanny Wadkins, Jr.	Jeanne Preston Whitman
James T. Williams, Jr.	Katherine B. Wright	Charles Jeffrey Young	Kyle A. Young

Life Trustees

James L. Becton	Bert L. Bennett	Louise Broyhill	Jan W. Calloway
C. C. Cameron	Charles W. Cheek	J. Donald Cowan, Jr.	Ronald E. Deal.
Victor I. Flow, Jr	Jean H. Gaskin	Marvin D. Gentry	Murray C. Greason, Jr.
William B. Greene, Jr.	Weston P. Hatfield	Harvey R. Holding	Jeanette W. Hyde
James E. Johnson, Jr.	Petro Kulynych	Dee Hughes LeRoy	William L. Marks
John G. Medlin, Jr.	Russell W. Meyer, Jr.	L. Glenn Orr, Jr.	Arnold D. Palmer
Frances P. Pugh	D. E. Ward, Jr.	Lonnie B. Williams	J. Tylee Wilson

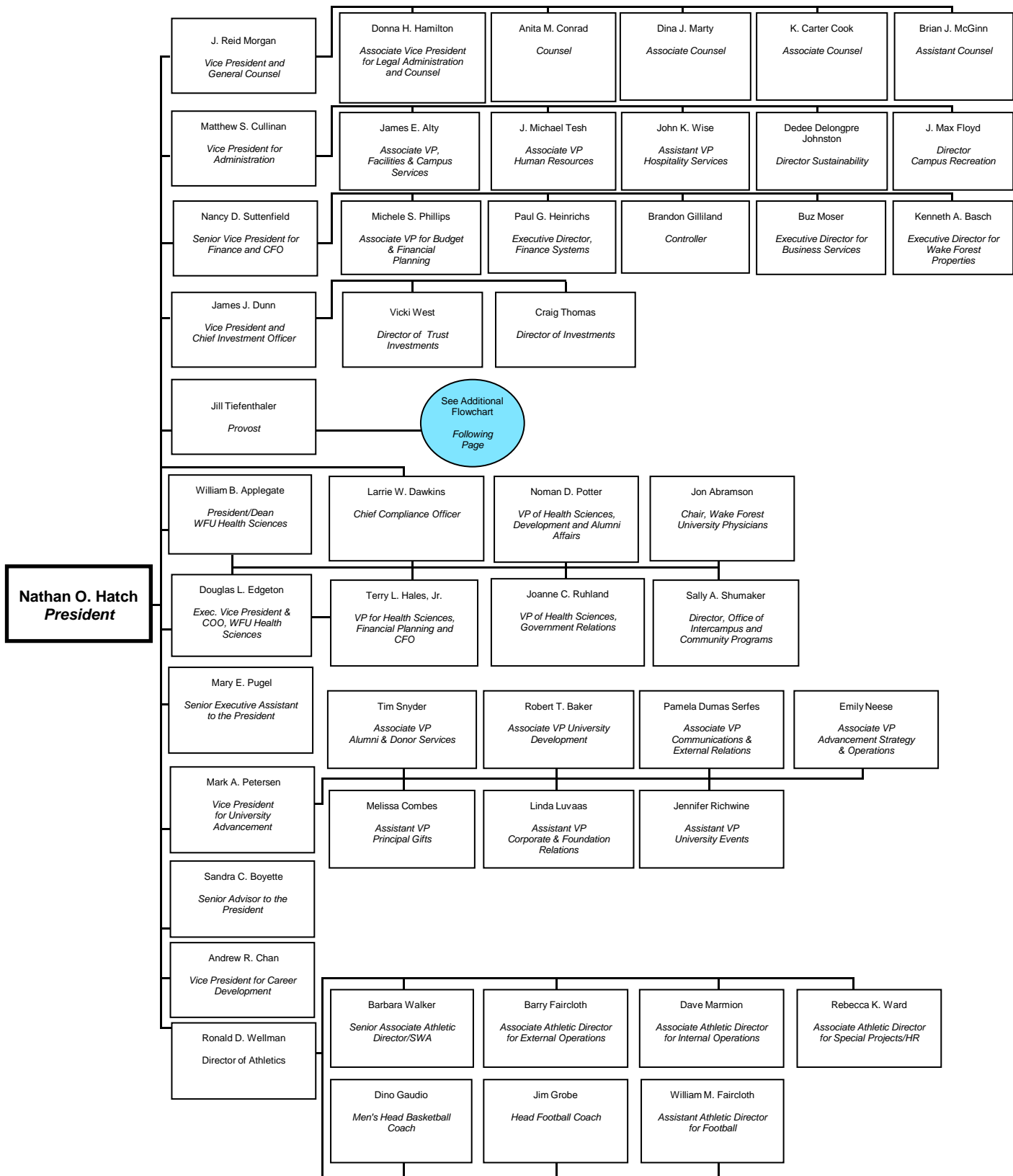
Administration – Executive Council

Nathan O. Hatch	President
William B. Applegate	President, Wake Forest University Health Sciences; Dean, Wake Forest University School of Medicine
Jill Tiefenthaler	Provost
Douglas L. Edgeton	Executive Vice President & COO, Wake Forest University Health Sciences
Nancy D. Sutenfield	Senior Vice President and Chief Financial Officer
J. Reid Morgan	Vice President and General Counsel
Matthew S. Cullinan	Vice President for Administration
James J. Dunn	Vice President and Chief Investment Officer
Mark A. Petersen	Vice President for University Advancement
Kenneth A. Zick	Vice President and Dean, Student Affairs
Andrew R. Chan	Vice President for Career Development
Ronald D. Wellman	Director of Athletics
Mary E. Pugel	Senior Executive Assistant to the President
George E. (Rick) Matthews	Associate Provost for Information Systems
Michele K. Gillespie	Associate Provost for Academic Initiatives
J. Kline Harrison	Associate Provost for International Affairs
Mark E. Welker	Associate Provost for Research and Faculty Affairs
Jacquelyn S. Fetrow	Dean of the College
Toby A. Hale	Associate Dean and Dean - Summer Session
Lorna G. Moore	Dean, Graduate School of Arts and Sciences
Steven S Reinemund	Dean of Business
Blake D. Morant	Dean, School of Law
Bill J. Leonard	Dean, School of Divinity
Lynn S. Sutton	Dean, Z. Smith Reynolds Library
Harold R. Holmes	Associate Vice President and Dean of Student Services

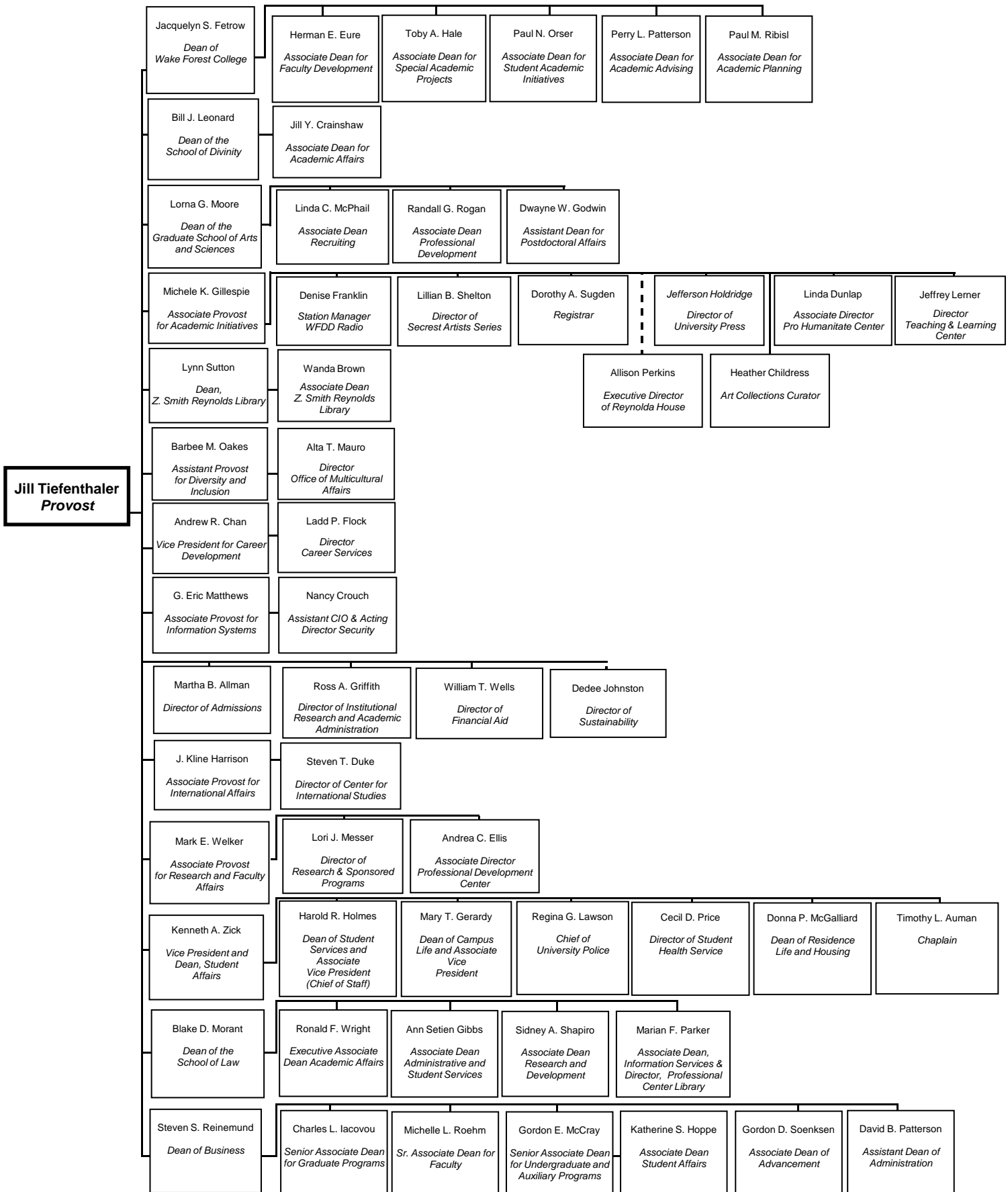
Presidents of Wake Forest University

1834	Samuel Wait	1884	Charles Elisha Taylor	1967	James Ralph Scales
1845	William Hooper	1905	William Louis Poteat	1983	Thomas K. Hearn, Jr.
1849	John Brown White	1927	Francis Pendleton Gaines	2005	Nathan O. Hatch
1854	Washington Manly Wingate	1930	Thurman D. Kitchin		
1879	Thomas Henderson Pritchard	1950	Harold Wayland Tribble		

ADMINISTRATIVE ORGANIZATIONAL CHART



ADMINISTRATIVE ORGANIZATIONAL CHART



Degrees Offered by Academic Program

Academic Program	Degree Offered	Academic Program	Degree Offered
Biomedical Sciences		Interdisciplinary Programs	
Biochemistry and Molecular Biology	PhD	Bioethics	MA, C
Bioethics	MA	Clinical and Population Translational Sciences	MS
Biomedical Engineering	MS, PhD	Molecular Pathology	PhD
Cancer Biology	PhD	Molecular Genetics and Genomics	PhD
Comparative Medicine	MS	Molecular Medicine and Translational Sciences	MS, PhD
Microbiology and Immunology	PhD	Neuroscience	PhD
Neurobiology and Anatomy	PhD	Structural and Computational Biophysics	C
Physiology and Pharmacology	PhD		
Business and Management		Law	
Accountancy	BS, MSA	Law	JD, LL.M., SJD
Finance	BS	Combined Degrees:	JD, MBA, M. Div.
Business	BS	JD/MA in Bioethics, JD/MA in Religion	
Business Administration and Management	MBA, MA	JD/MBA, JD/M. Div.	
Combined JD/MBA	JD, MBA		
Combined MD/MBA	MD, MBA		
Combined MSA/MBA	MSA, MBA		
Combined PhD*/MBA	PhD, MBA		
Counseling		Liberal Studies	
Counseling	MA	Liberal Studies	MALS
Combined M. Div./MA	M. Div., MA		
Computer and Information Sciences		Mathematics	
Computer Science	BA, BS, MS	Mathematics	BA, BS, MA
		Mathematical Business	BS
		Mathematical Economics	BS
Education		Life and Physical Sciences	
Education	BA, MAEd	Biology	BA, BS, MS, PhD
		Chemistry	BA, BS, MS, PhD
		Physics	BA, BS, MS, PhD
Engineering		Social and Behavioral Sciences	
Engineering	BS **	Anthropology	BA
		Communication	BA, MA
Foreign Languages		Economics	BA
Chinese	BA	History	BA
Japanese	BA	Political Science	BA
French	BA	Psychology	BA, MA
German	BA	Sociology	BA
Greek	BA		
Latin	BA		
Russian	BA	Theology	
Spanish	BA	Divinity	M. Div.
		Combined M. Div./MA	M. Div., MA
Health Sciences		Visual and Performing Arts	
Combined MD/PhD*, MD/MBA, MD/MS	MD, PhD, MBA, MS	Art History	BA
Health and Exercise Science	BS, MS	Studio Art	BA
Medical Technology	BS**	Music in Liberal Arts	BA
Medicine	MD	Music Performance	BA
Physician Assistant Studies	MMS	Theatre	BA
Humanities			
Classical Studies	BA		
English	BA, MA		
Medieval Studies	C		
Philosophy	BA		
Religion	BA, MA, JD/MA		

*PhD of combined degrees can be obtained in any discipline offering PhD

** Combined Degree

Information Systems (Reynolda Campus)

Information Systems supports University instruction, research, and administrative needs through computing and telecommunications services. The campus computer network offers wired and wireless high-speed connectivity from all campus buildings.

All students on the Reynolda Campus are given a network login ID; the login ID is maintained as long as the student is enrolled. This account provides students with access to networked computer resources such as electronic mail, client-server software packages, various courseware applications, and administrative services. Upon matriculation, and again at the beginning of their junior year, undergraduate students receive a new ThinkPad computer as part of their tuition. The current ThinkPad model specifications can be found on the Information Systems Web site at help.wfu.edu. Standard software on the ThinkPad includes Windows Vista, Microsoft Office, Adobe Acrobat and digital media tools, and Internet applications like Mozilla Firefox and Adobe Dreamweaver. The ThinkPad also has a variety of research, analytical, and development tools, as well as the latest version of Symantec AntiVirus. Maintenance and support for the ThinkPad computers is provided on campus through a service center located on the main floor of the Z. Smith Reynolds Library. Loaner computers are available for students as needed.

Information Systems maintains an extensive array of online resources that support University admissions, student registration, grade processing, payroll administration, accounting services, and many other administrative and academic applications. In addition, the Wake Forest Information Network (WIN) provides the University community with features like faculty, staff, student and alumni directories; a career networking service; online class registration; and vehicle registration.

Students also have access to computing resources outside the University. The University is a member of the Inter-University Consortium for Political and Social Research (ICPSR), located at the University of Michigan. Membership in ICPSR provides faculty and students with access to a large library of data files, including public opinion surveys, cross-cultural data, financial data, and complete census data. The University is also a member of EDUCAUSE, a national consortium of colleges and universities concerned with computing issues.

The University has an extensive collection of computing facilities that serve both academic and business needs. Wake Forest's network infrastructure includes a gigabit Ethernet backbone, 100 megabit switched connectivity to the desktop, and pervasive, 802.11a/g wireless connectivity in all campus buildings. LINUX and Windows-based servers provide for business computing needs and services. A mix of LINUX, AIX systems and Windows-based systems provide for messaging, systems management, Internet, intranet, courseware, various research needs, and file and print services. A LINUX supercomputing cluster provides supercomputing services for math, computer science, physics, and other scientific research applications. These systems are available to students, faculty, and staff 24 hours a day through the Wake Forest University network or ISP connectivity. All connections are protected by VPN and firewalls.

Programming languages available on the various academic computing systems include C, C++, Java, Perl, Tcl/TK, and Fortran77. Students are exposed to a variety of operating systems through virtualization. SPSS, a statistical package used for data analysis, forecasting, and financial modeling, Maple and Matlab, an interactive environment for algorithm development, data visualization, and data analysis, are available on the ThinkPad. Using ThinkPads, students have access to a large variety of instructional, classroom, and research resources through the campus network including the online catalog, databases, and electronic journals provided by the Z. Smith Reynolds Library. Many departments on campus have their own computing resources in addition to those available through the Information Systems Department.

In addition to the tools provided by the Wake Forest standard notebook load, Math students have access to a full suite of tools for class, project and research that aid them in completing their degree. These tools include MatLab, Maple, SPlus, CoCoo, and a full suite of GNU compiler tools. These tools are located on a Red Hat server made available to only the Math Department and those working in conjunction with them.

Through the use of operating system virtualization, the Computer Science Department is able to offer a unique set of software tools that allow students to experience the nuances of various operating systems. Depending on the class, students may find themselves working on one of the many varieties of UNIX that are available in today's marketplace. These may include Ubuntu, Debian and Red Hat Linux as well as Sun Microsystem's Solaris and OpenSolaris. The Wake Forest Microsoft Windows standard load comes on the students notebooks, and various classes are taught on the Windows platform as well as MAC OS X.

In addition, students and faculty have access to the Wake Forest Deac Cluster, a high performance cluster with 220 nodes. Dedicated servers are provided to offer MatLab, Maple, and GNU compiler suite as well as the Sun compiler suite. The Wake Forest DEAC cluster currently offers the computational research community a wide variety of commercial scientific software as well as open source middleware necessary to effectively and efficiently utilize the high performance computing cluster. In addition, most commercial scientific software that is currently available to the campus as a whole is also available on the cluster. Currently, researchers on the cluster have access to: any Red Hat Enterprise Linux 4 provided software; Fortran 77 and Fortran 90 compilers from Intel, Portland Group, and Absoft; OpenMP API support from Intel; MPI support for Ethernet (MPICH2) from Argonne National Lab and Infiniband (MVAPICH2) from Ohio State University; and commercial software packages such as Matlab R2009a, Maple 12, Mathematica 7, and ITT IDL.

Information Systems also provides telephone and cable television services to the students, faculty, and staff of Wake Forest. Cable television provides a recreational outlet, but also plays an important role by providing access to campus information and educational offerings. Cable channel 6 is student-run WAKE-TV which features various student programs. Channels 20 and 22 carry SCOLA and SCOLA2, nonprofit educational services that feature television programming from more than 50 different countries in their original languages. Information Systems also offers select HDTV channels to students in residence halls.

Information Systems provides assistance online at help.wfu.edu, by telephone at xHELP (x4357) and supports walk-in customers at The Bridge located on the main floor of the Z. Smith Reynolds Library. Hours of operation are posted online at help.wfu.edu/calendar. A voice mail retrieval system is activated on weekends and during holiday breaks to respond to emergency calls. On-site computing support in the residence halls is available from Resident Technology Advisors at xRTAS (x7827). In addition, students have 24-hour access to online support resources at help.wfu.edu.

More than 100 students are involved in Information Systems student technology programs. Students work in a number of settings that include providing direct support for students, faculty, and staff. In addition, students participate in unique leadership and community outreach programs including a technology-focused theme house.

Libraries

The libraries of Wake Forest University support instruction and research at the undergraduate level and in the disciplines awarding graduate degrees. The libraries of the University hold membership in the American Library Association and in the Association of Southeastern Research Libraries. They rank among the top libraries in the Southeast in expenditures per student.

The Wake Forest University libraries include the Z. Smith Reynolds Library, which is located on the Reynolda Campus and supports the undergraduate College, the Calloway School of Business and Accountancy, the Graduate School of Arts and Sciences, and the Divinity School. The Professional Center Library, housed in the Worrell Professional Center on the Reynolda Campus, serves the Law School and the Babcock Graduate School of Management. The Coy C. Carpenter Library serves the Wake Forest School of Medicine and is located on the Bowman Gray Campus. The three library collections total over 2 million volumes. Subscriptions to more than 35,000 periodicals and serials, largely of scholarly content, are maintained at the libraries. The Z. Smith Reynolds Library holds over 1.7 million volumes in the general collection, over 1 million reels of microfilm and pieces of microtext, and nearly 25,000 media items. As a congressionally designated selective federal depository and depository of North Carolina government information, the ZSR Library holds nearly 170,000 government documents. The Professional Center Library holds over 180,000 volumes and the Coy C. Carpenter Library holds over 150,000 volumes. The three libraries share an online catalog, which also provides access to electronic resources, journals and databases, all accessible via the campus network and on the Internet.

Through interlibrary loan service, students, faculty and staff may obtain materials from other libraries at no charge. In addition, Wake Forest University faculty members have borrowing privileges and on-site access to the collections of some of the most important research libraries in North America. The Z. Smith Reynolds Library provides access to a number of digital current awareness tools to help faculty stay up-to-date in their fields of interest. Photocopy services and campus delivery of books, media and ILL materials are provided to faculty as well. Faculty may place course materials and readings on Reserve, with electronic reserve options available. Faculty participate in collection development by recommending purchases through Library Liaisons, Faculty Library Representatives, and Academic Department Chairs. Faculty members, along with students, serve on the Library Planning Committee. Library services specifically tailored for faculty are outlined at <http://zsr.wfu.edu/faculty.html>

The Z. Smith Reynolds Library provides comprehensive reference and research services including assistance with directed and independent research and online searching, discipline related library instruction, general library orientation, tours, and a one-credit elective course entitled "Accessing Information in the 21st Century." Reference tools are available in electronic and print formats.

Special collections in the Z. Smith Reynolds Library include the Rare Books and Manuscripts Collection and the Ethel Taylor Crittenden Baptist Historical Collection. The Rare Books and Manuscripts Collection, greatly enhanced by the donation of rare and fine books of the late Charles H. Babcock, emphasizes American and British authors of the nineteenth and twentieth centuries. Among the collections are works of Mark Twain, Gertrude Stein, William Butler Yeats, T.S. Eliot and the publications of the Hogarth Press. The extensive Anglo-Irish literature collection includes the Dolmen Press Archive. The archive of alumnus Harold Hayes, editor of *Esquire* magazine in the 1960's - 70's, and the Maya Angelou works for theater, television and screen are maintained in the special collections. The Ethel Taylor Crittenden Baptist Historical Collection contains significant books, periodicals, manuscripts and church records relating to North Carolina Baptists, as well as the personal papers of prominent ministers, educators, and government officials with ties to Wake Forest College/University. The Wake Forest College/University Archive is maintained in the library as well.

The entire library is equipped for wireless internet access. Facilities in the Z. Smith Reynolds Library include an Information Technology Center (ITC) which offers a computer lab, technology training classes and collaborative space for student group work. The ITC also offers a multimedia lab with stations for digital imaging, scanning, and multimedia projects. Small group study rooms may be reserved at the circulation desk. In addition, 90 locking study carrels located throughout the Reynolds stacks may be reserved by graduate students and faculty. The library is open continuously during the fall and spring semesters 24 hours a day from Sunday through Thursday. When the library is not on its 24 hour schedule, two 24 hour study rooms are available located near the entrance to the library and may be accessed by keycard when the library is closed. The study room on one side houses a Starbucks. A full description of the Z. Smith Reynolds Library resources and services is found at <http://zsr.wfu.edu/>.

Within the Coy C. Carpenter Library of the Wake Forest University School of Medicine, specific collections deal with the written and oral history of the School of Medicine, the history of neurology, and the Suzanne Meads Art in Medicine collection. The Dorothy Carpenter Medical Archives also contain the papers of the American Neurological Association, the American Society of Neuroimaging, the Association of Medical Illustrators, the Society of Neurological Surgeons, the North Carolina Surgical Association, and the North Carolina Baptist Hospital Nursing School.

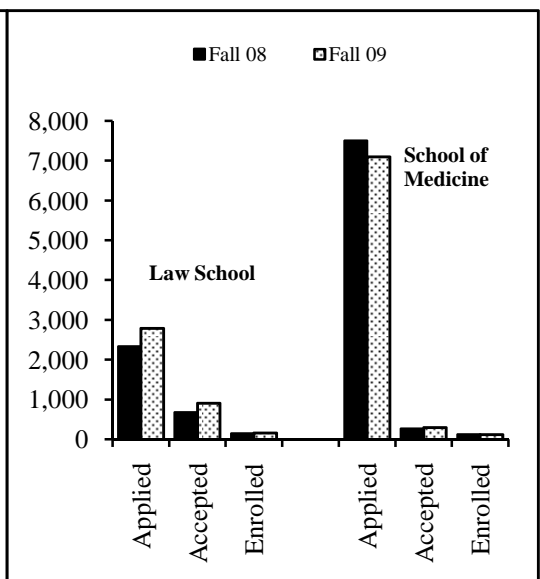
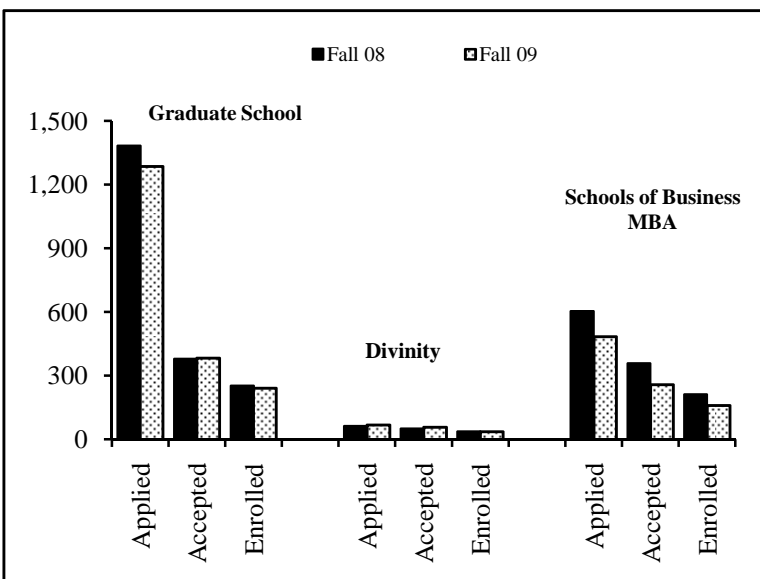
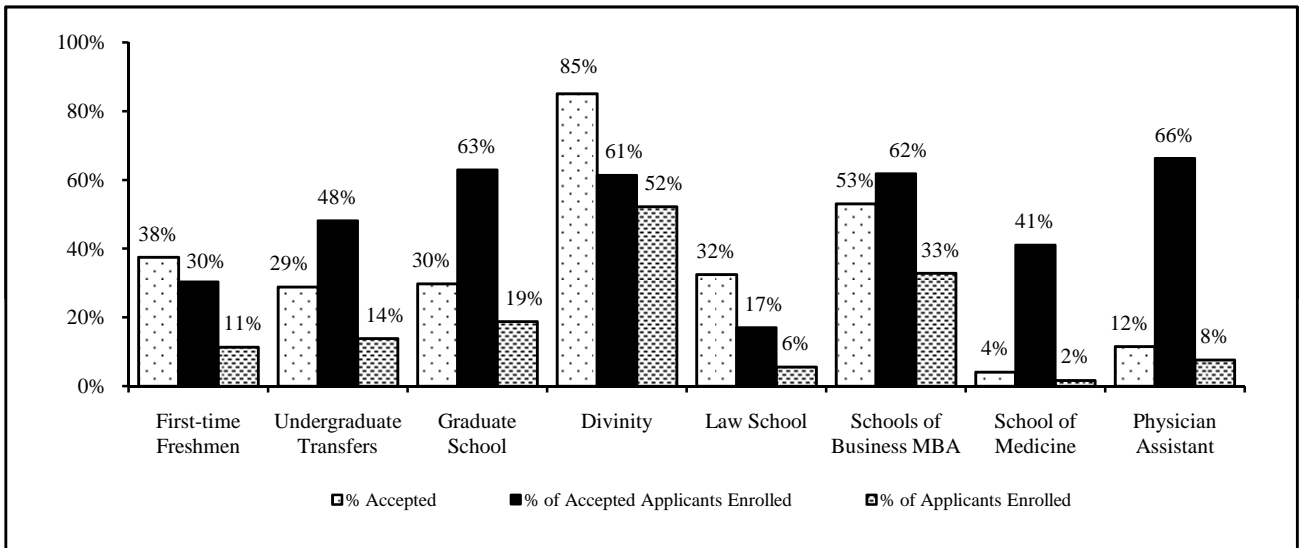


Students



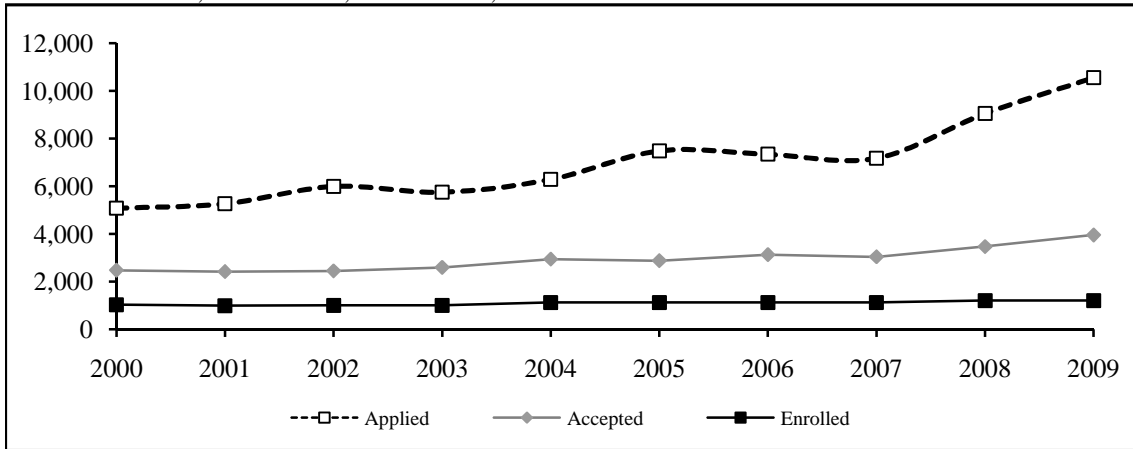
Admissions, Fall 2009

	Number of Applicants				Number Accepted				Number Enrolled			
	Male	Female	NC	OS	Male	Female	NC	OS	Male	Female	NC	OS
Freshmen	10,553		10,553		3,959		3,959		1,200		1,200	
	4,861	5,692	2,519	8,034	1,894	2,065	1,067	2,892	569	631	305	895
Undergraduate Transfers	375		375		108		108		52		52	
	193	182	84	291	60	48	14	94	28	24	9	43
Graduate School	1,286		1,286		383		383		241		241	
	567	719	316	970	181	202	135	248	116	125	103	138
Divinity	67		67		57		57		35		35	
	44	23	32	35	39	18	25	32	26	9	14	21
Law School	2,785		2,785		905		905		154		154	
	1,566	1,219	546	2,239	512	393	149	756	87	67	41	113
Schools of Business--MBA	484		484		257		257		159		159	
	339	145	213	271	193	64	142	115	124	35	109	50
School of Medicine	7,102		7,102		292		292		120		120	
	3,921	3,181	731	6,371	148	144	91	201	60	60	47	73
Physician Assistant	719		719		83		83		55		55	
	157	562	181	538	16	67	41	42	9	46	28	27



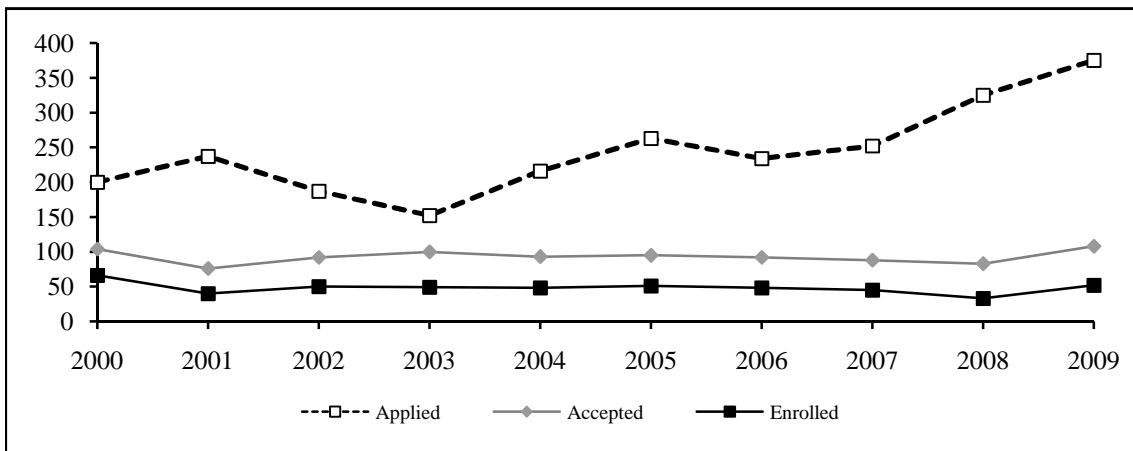
Admissions, First-time Freshmen, Fall 2000-2009

Year	Applied	Accepted	Enrolled
2000	5,079	2,480	1,025
2001	5,271	2,421	989
2002	5,995	2,454	1,007
2003	5,752	2,599	1,007
2004	6,289	2,945	1,121
2005	7,484	2,882	1,120
2006	7,341	3,130	1,125
2007	7,177	3,041	1,124
2008	9,050	3,473	1,202
2009	10,553	3,959	1,200



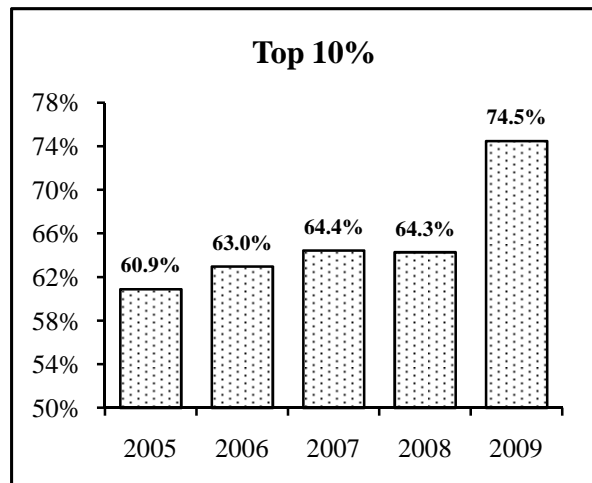
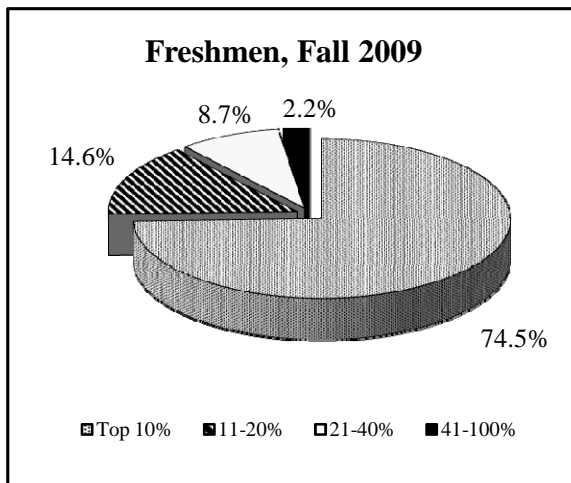
Admissions, Undergraduate Transfer Students, Fall 2000-2009

Year	Applied	Accepted	Enrolled
2000	200	104	66
2001	237	76	40
2002	187	92	50
2003	152	100	49
2004	216	93	48
2005	263	95	51
2006	234	92	48
2007	252	88	45
2008	325	83	33
2009	375	108	52

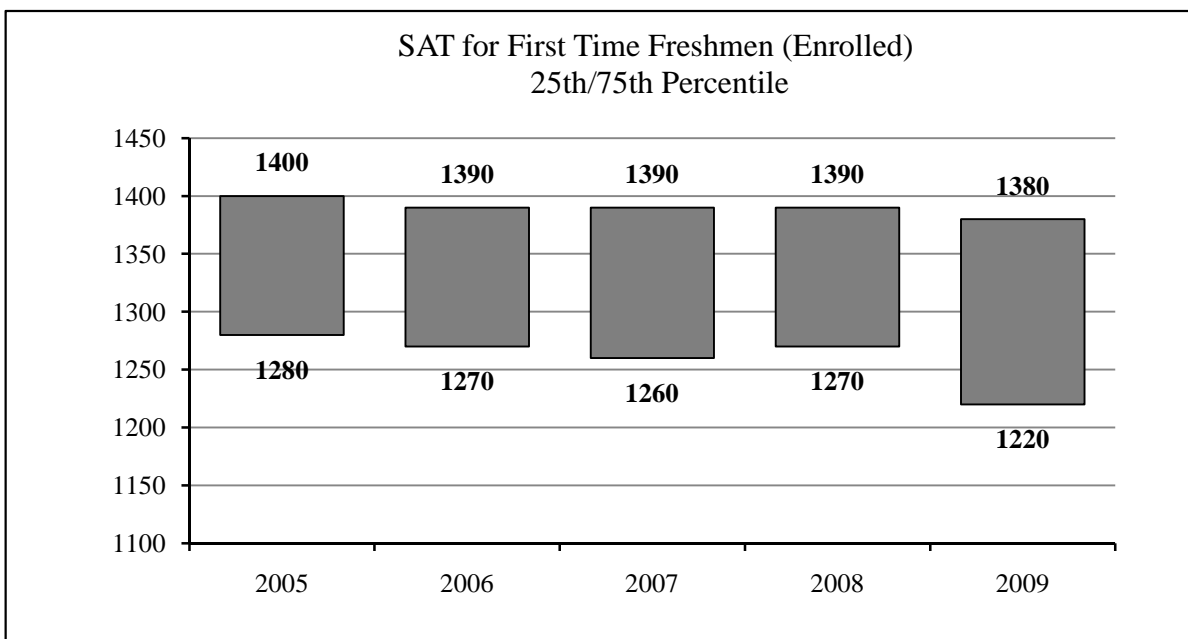


High School Rank of Entering Freshmen, 2005-2009

Rank	2005		2006		2007		2008		2009	
	#	%	#	%	#	%	#	%	#	%
Top 10%	425	60.9%	391	63.0%	462	64.4%	475	64.3%	531	74.5%
11-20%	163	23.4%	142	22.9%	153	21.3%	168	22.7%	104	14.6%
21-40%	86	12.3%	71	11.4%	84	11.7%	73	9.9%	62	8.7%
41-60%	18	2.6%	14	2.3%	13	1.8%	14	1.9%	7	1.0%
61-80%	6	0.9%	3	0.5%	5	0.7%	5	0.7%	7	1.0%
81-100%	0	0.0%	0	0.0%	0	0.0%	4	0.5%	2	0.3%
Not Available	422		504		407		463		487	
Total	1,120		1,125		1,124		1,202		1,200	



Middle 50% of SAT Scores for Entering Freshmen, 2005-2009



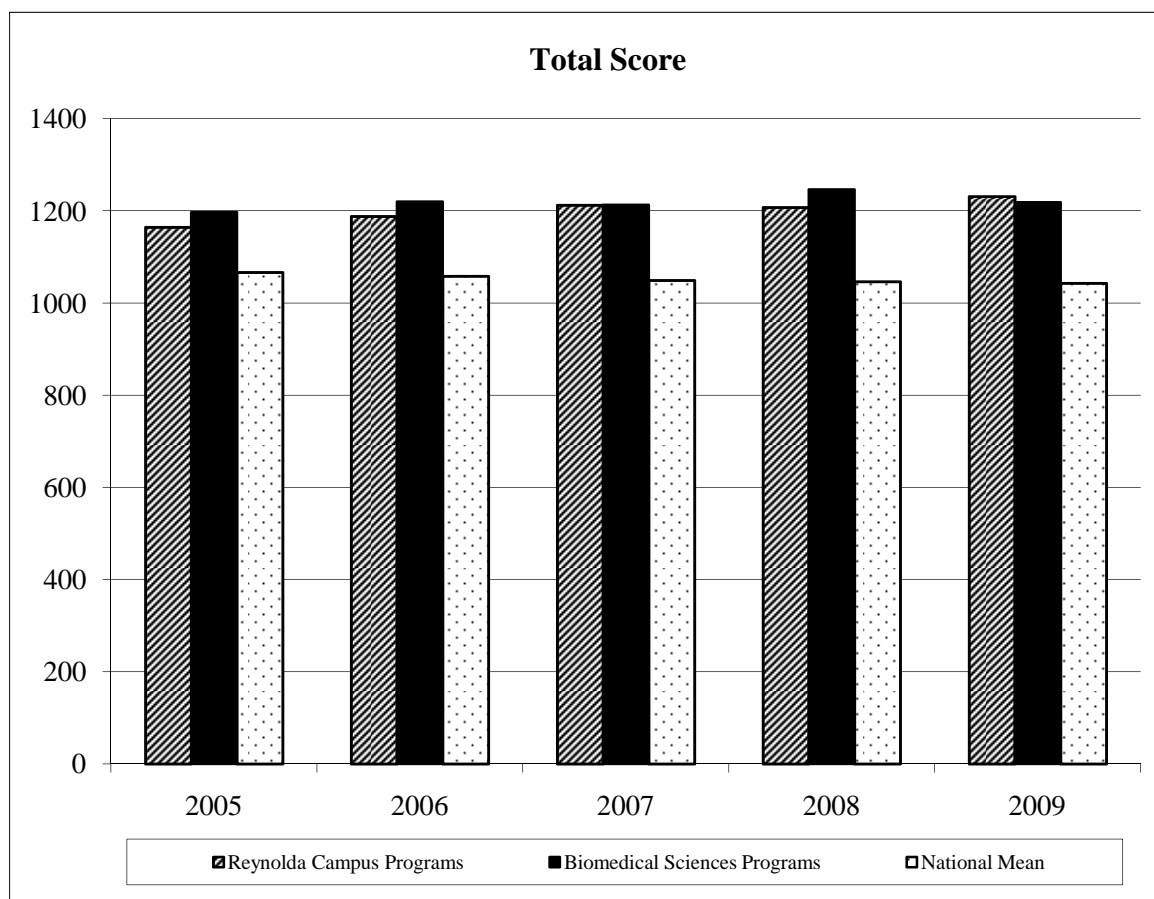
Average GRE Scores for Entering Students, Graduate School, 2005-2009

Reynolda Campus Programs	Verbal (%)	Quantitative (%)	Total*	Analytical (%) [†]
2005	495 (59)	669 (62)	1164	636 (65)
2006	528 (64)	660 (60)	1188	5.2 (70)
2007	556 (74)	656 (61)	1212	5.4 (83)
2008	544 (72)	663 (63)	1207	4.5 (58)
2009	559 (77)	672 (64)	1231	4.5 (63)
Biomedical Sciences Programs				
2005	515 (64)	682 (64)	1197	617 (58)
2006	524 (65)	696 (67)	1220	4.4 (52)
2007	525 (66)	688 (69)	1213	4.4 (52)
2008	537 (69)	709 (74)	1246	4.5 (58)
2009	517 (67)	701 (71)	1218	4.0 (41)
National Mean‡	457	586	1043	3.9

*Total is sum of Verbal and Quantitative Scores

[†]"Analytical Writing" score is based on a 6 point scale in years 2006 and later

[‡]Based on the performance of all examinees who tested between July 1, 2005 and June 30, 2008 (source: *Graduate Record Examinations Guide to the Use of Scores 2009-10*)



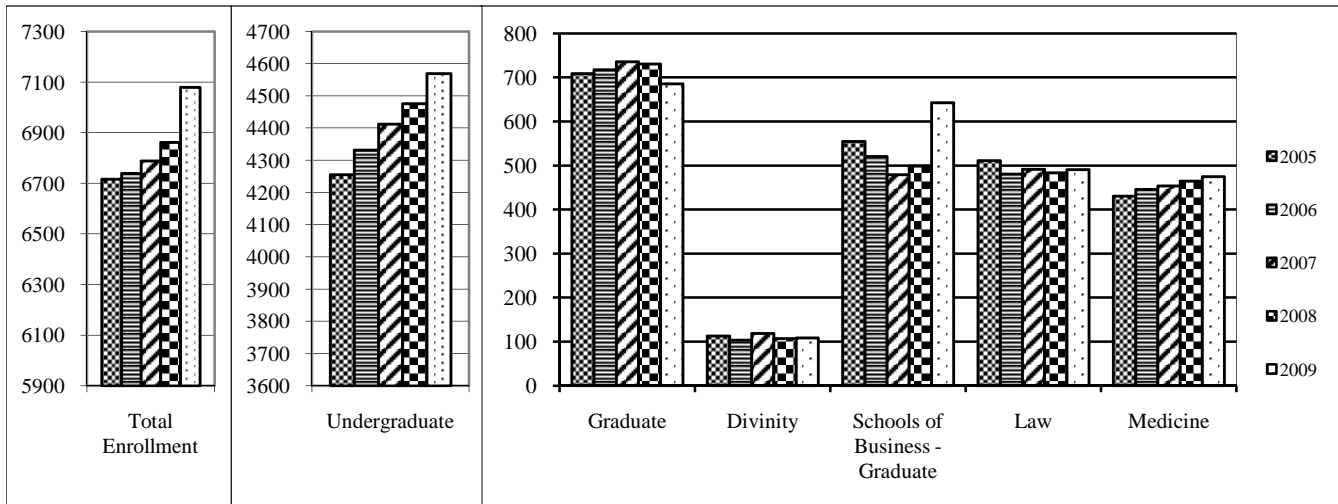
Fall Enrollment, 1990-2009

Year	Undergraduate	Graduate	Divinity	Law	Schools of Business - Graduate	Medicine	Allied Health*	Total
1990-91	3,592	470	0	461	451	439	64	5,477
1991-92	3,650	518	0	463	501	433	114	5,679
1992-93	3,624	467	0	473	507	436	117	5,624
1993-94	3,538	588	0	464	506	439	126	5,661
1994-95	3,620	552	0	472	513	448	143	5,748
1995-96	3,701	585	0	470	565	437	134	5,892
1996-97	3,771	578	0	460	615	450	127	6,001
1997-98	3,841	587	0	475	627	452	125	6,107
1998-99	3,855	583	0	475	654	445	122	6,134
1999-00	3,857 (3,670)	575	28	472	648	441	133	6,154
2000-01	3,950 (3,744)	584	50	476	628	440	136	6,264
2001-02	3,992 (3,746)	603	68	486	643	429	144	6,365
2002-03	4,045 (3,748)	622	72	485	624	428	134	6,410
2003-04	4,037 (3,735)	684	88	508	559	436	132	6,444
2004-05	4,128 (3,801)	666	96	495	556	427	136	6,504
2005-06	4,263 (3,909)	709	113	511	555	431	134	6,716
2006-07	4,332 (3,972)	718	104	481	521	446	137	6,739
2007-08	4,412 (4,049)	736	119	492	479	454	96	6,788
2008-09	4,476 (4,106)	731	107	484	499	465	100	6,862
2009-10	4,569 (4,230)	686	109	491	643	475	106	7,079

*In the years 2002-03 through 2006-07, the Allied Health Category includes the Nurse Anesthesia and Physician Assistant programs in which students earn graduate degrees. The Medical Technology program is counted in "Undergraduate" since no graduate degree is awarded. Beginning in 2007-08, Medical Technology and Nurse Anesthesia are no longer counted as University programs and "Allied Health" refers exclusively to Physician Assistant.

() = Reynolda Campus undergraduate students (excludes Study Abroad and Allied Health students)

Enrollment by School, Fall 2005-2009



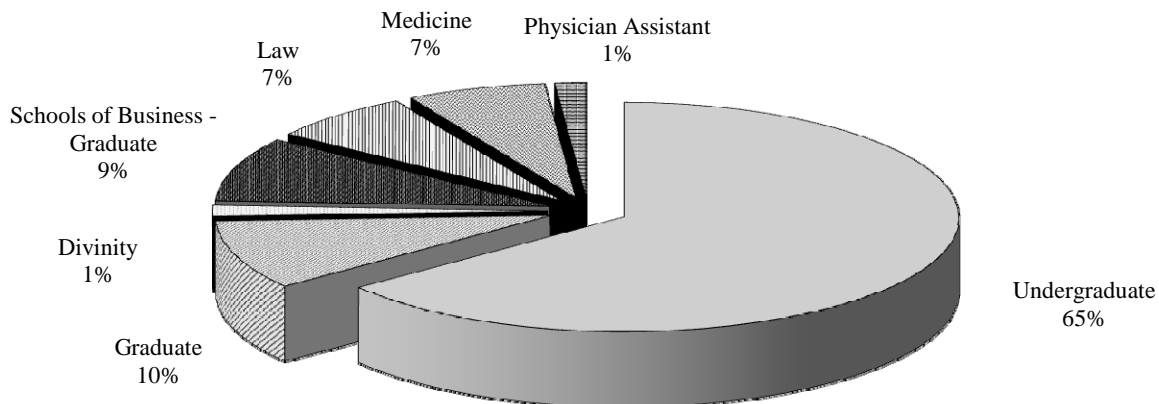
Enrollment by Class and by School, Fall 2009

	Male	Female	Total	FTE*
Freshmen [†]	588	643	1,231	1229.50
Sophomores	585	613	1,198	1197.25
Juniors	542	535	1,077	1075.00
Seniors	517	537	1,054	1033.75
Unclassified	5	4	9	5.00
Total Undergraduates	2,237	2,332	4,569	4540.50
<i>Study Abroad</i>	<i>115</i>	<i>224</i>	<i>339</i>	<i>339.00</i>
<i>Reynolda Campus</i>	<i>2,122</i>	<i>2,108</i>	<i>4,230</i>	<i>4201.50</i>
Graduate - Arts & Sciences	197	218	415	380.50
Graduate - Medicine	111	160	271	259.00
Divinity	57	52	109	105.50
Schools of Business-Graduate	442	201	643	642.50
Law School	288	203	491	491.00
Medical School	256	219	475	475.00
Physician Assistant	19	87	106	106.00
University Total	3,607	3,472	7,079	7000.00

*Full-time equivalent

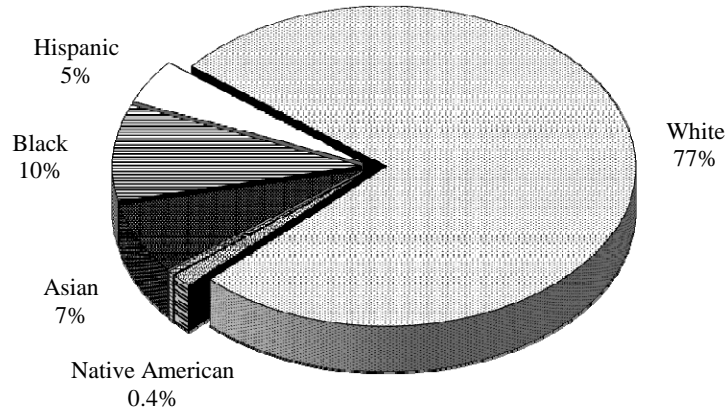
Source: IPEDS-Fall Enrollment 2009

[†]Includes all first-time, first-year students, even those with advanced standing



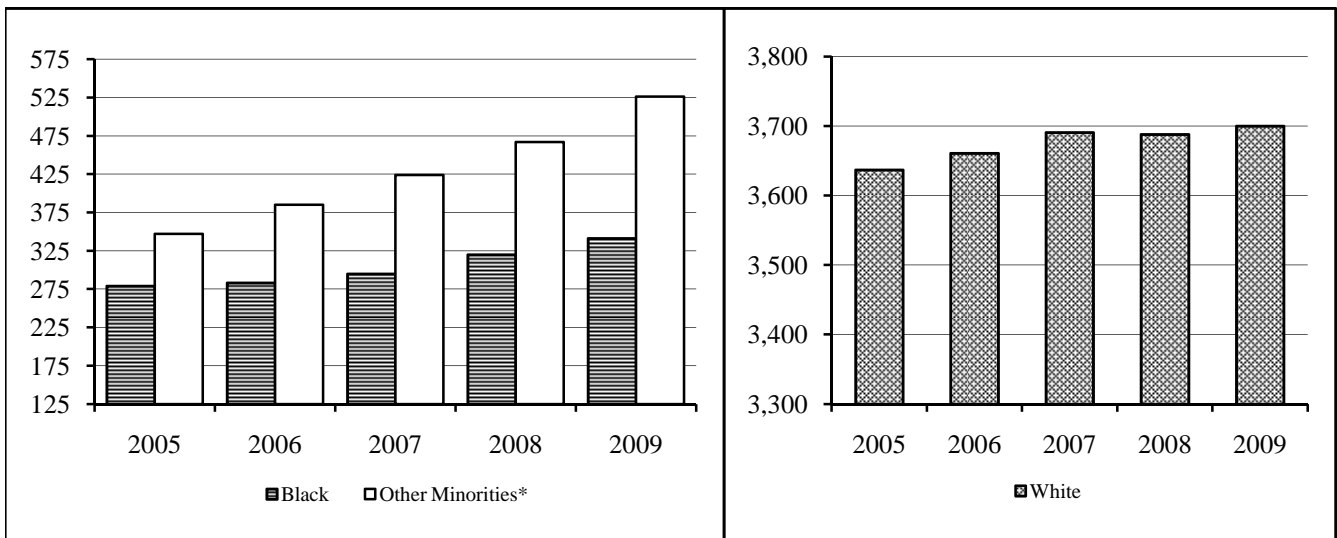
First-time Freshmen Ethnic Enrollment, Fall 2009

Ethnicity	Male		Female		Total by Ethnicity	
	#	%	#	%	#	%
Native American	3	0.5%	2	0.3%	5	0.4%
Asian	42	7.4%	45	7.1%	87	7.3%
Black	50	8.8%	66	10.5%	116	9.7%
Hispanic	31	5.4%	23	3.6%	54	4.5%
White	437	76.8%	484	76.7%	921	76.8%
Other	6	1.1%	10	1.6%	16	1.3%
Not Reported	0	0.0%	1	0.2%	1	0.1%
Total by Gender	569	47.4%	631	52.6%	1,200	100%



Undergraduate Ethnic Enrollment, Fall 2005-2009

Year	Black	Other Minorities*	Total Minorities	White	% Minority†
2005	279	347	626	3,637	14.7%
2006	283	385	668	3,661	15.4%
2007	295	424	719	3,691	16.3%
2008	320	467	787	3,688	17.6%
2009	341	526	867	3,700	19.0%

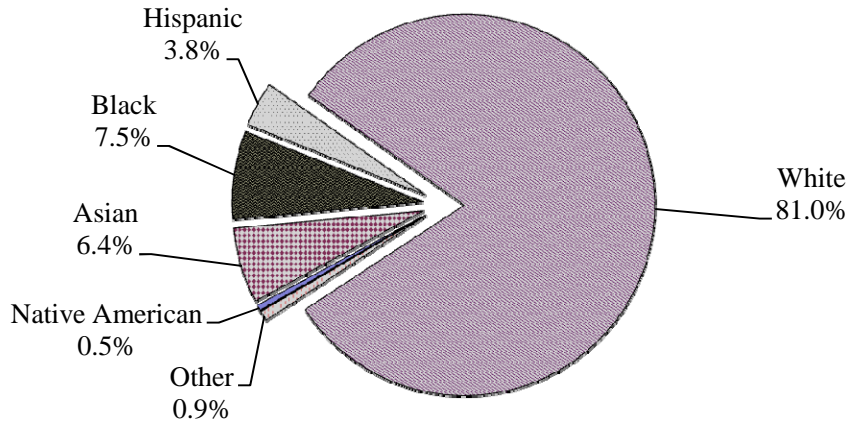


*Includes all non-resident aliens in years prior to 2006.

†Excludes "Not Reported"

Undergraduate Ethnic Enrollment, Fall 2009

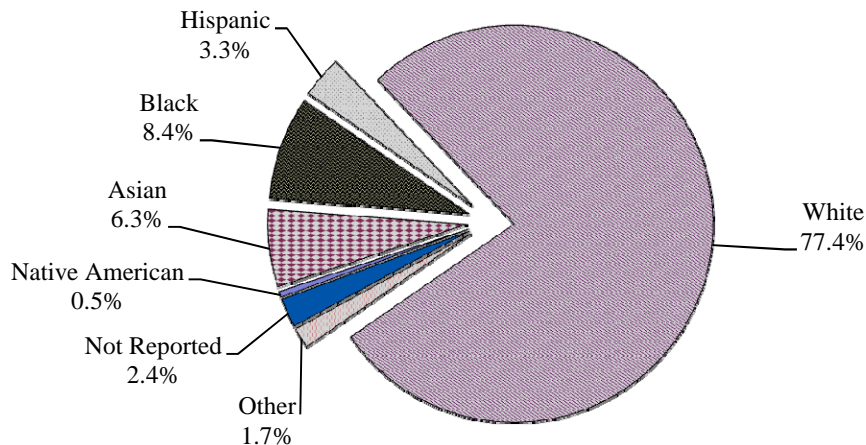
Ethnicity	Male		Female		Total by Ethnicity	
	#	%	#	%	#	%
Native American	7	0.3%	15	0.6%	22	0.5%
Asian	142	6.3%	150	6.4%	292	6.4%
Black	160	7.2%	181	7.8%	341	7.5%
Hispanic	89	4.0%	84	3.6%	173	3.8%
White	1,821	81.4%	1,879	80.6%	3,700	81.0%
Other	17	0.8%	22	0.9%	39	0.9%
Not Reported	1	0.0%	1	0.0%	2	0.0%
Total by Gender	2,237	49.0%	2,332	51.0%	4,569	100.0%



University Ethnic Enrollment*, Fall 2009

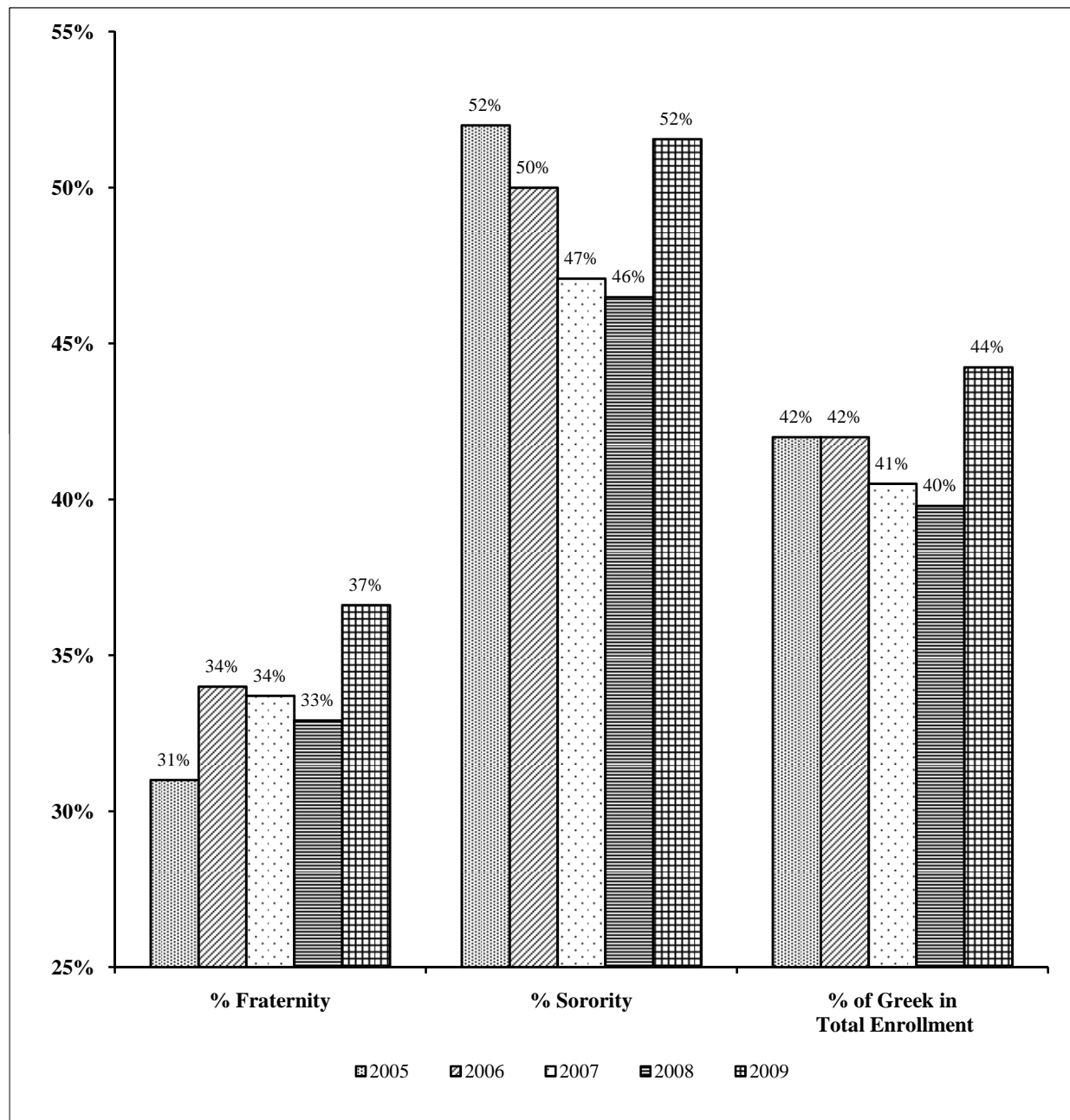
Ethnicity	Male		Female		Total by Ethnicity	
	#	%	#	%	#	%
Native American	14	0.2%	20	0.3%	34	0.5%
Asian	232	3.3%	213	3.0%	445	6.3%
Black	256	3.6%	337	4.8%	593	8.4%
Hispanic	120	1.7%	117	1.7%	237	3.3%
White	2,820	39.8%	2,662	37.6%	5,482	77.4%
Other	71	1.0%	49	0.7%	120	1.7%
Not Reported	94	1.3%	74	1.0%	168	2.4%
Total by Gender	3,607	51.0%	3,472	49.0%	7,079	100.0%

*Includes all schools and programs based on IPEDS - Fall Enrollment 2009



Undergraduate Greek Affiliation, Spring 2005-2009

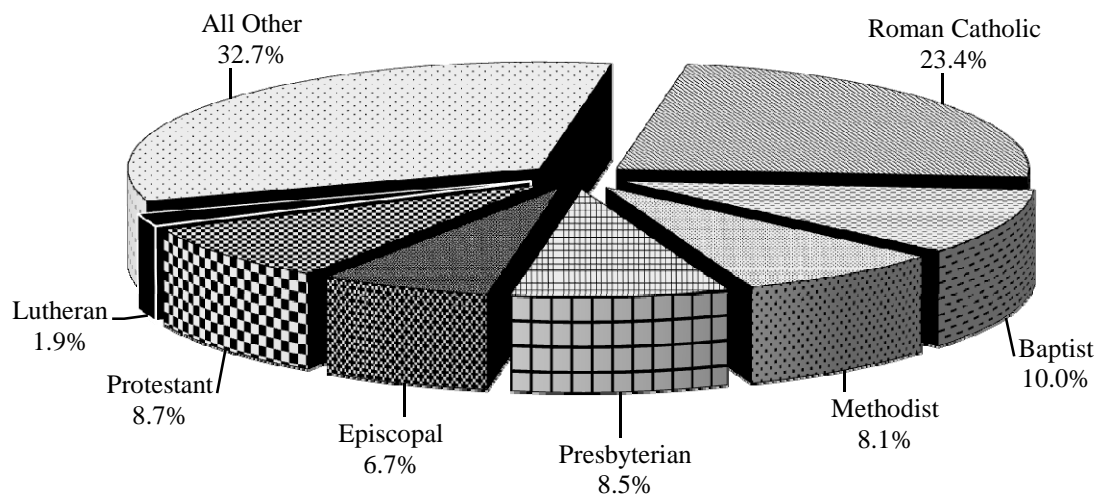
Year	Male Enrollment		Female Enrollment		Total Greek	Percent of Greek in Total Enrollment
	Fraternity	Total (%)	Sorority	Total (%)		
2005	615	1967 (31%)	1078	2059 (52%)	1693	42%
2006	693	2045 (34%)	1050	2084 (50%)	1743	42%
2007	698	2071 (34%)	1008	2141 (47%)	1706	41%
2008	701	2130 (33%)	1019	2192 (46%)	1720	40%
2009	782	2136 (37%)	1149	2229 (52%)	1931	44%



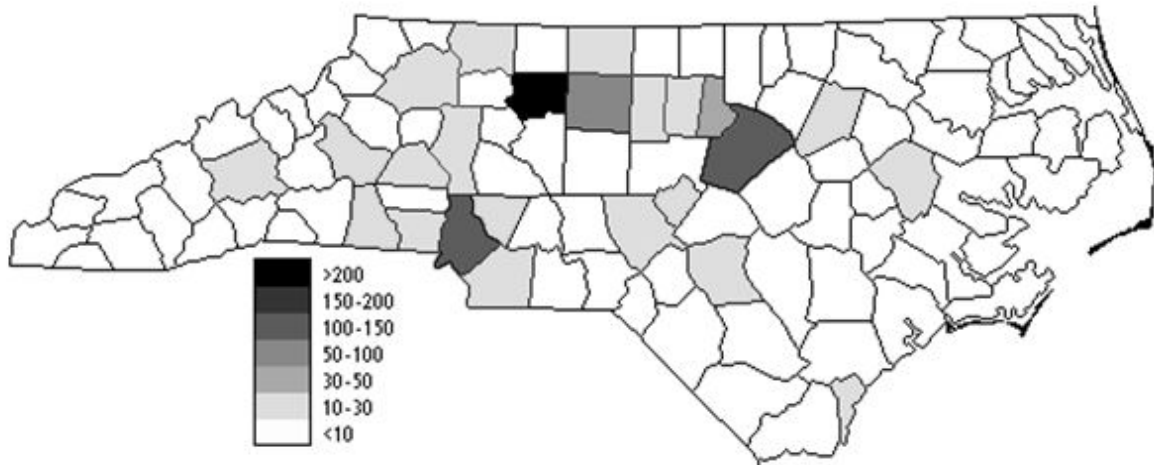
Undergraduate Religious Preference, Fall 2005-2009

	Fall 2005	Fall 2006	Fall 2007	Fall 2008	Fall 2009
Not Reported	2.0%	7.3%	5.0%	2.6%	0.6%
Baptist	14.1%	11.3%	11.0%	10.8%	10.0%
Buddhist	0.2%	0.2%	0.1%	0.1%	0.2%
Christian - Disciples	0.0%	0.0%	0.0%	0.0%	0.4%
Christian Scientist	0.1%	0.1%	0.1%	0.0%	0.0%
Episcopal	7.3%	7.0%	6.8%	6.1%	6.7%
Greek Orthodox	0.9%	0.8%	0.6%	0.6%	0.5%
Hindu	0.7%	0.6%	0.7%	0.8%	0.9%
Jewish	2.1%	2.0%	2.1%	2.2%	2.3%
Latter Day Saints	0.0%	0.0%	0.0%	0.0%	0.1%
Lutheran	3.2%	2.4%	2.1%	2.2%	1.9%
Methodist	12.1%	10.6%	9.8%	8.9%	8.1%
Moravian	0.3%	0.3%	0.3%	0.3%	0.4%
Mormon	0.2%	0.1%	0.1%	0.1%	0.0%
Muslim	0.2%	0.2%	0.3%	0.4%	0.5%
No Preference	5.1%	8.4%	13.3%	18.0%	22.7%
Presbyterian	12.9%	11.3%	10.3%	9.7%	8.5%
Protestant	8.1%	8.3%	8.2%	8.4%	8.7%
Quaker	0.1%	0.1%	0.2%	0.2%	0.2%
Roman Catholic	24.3%	23.6%	24.1%	23.9%	23.4%
United Church of Christ	1.3%	1.0%	1.0%	0.9%	0.8%
Unitarian	0.2%	0.2%	0.2%	0.1%	0.2%
Other	4.3%	4.3%	3.8%	3.7%	2.8%

Religious Preference, Fall 2009



North Carolina Undergraduate Students by County of Residence, Fall 2009

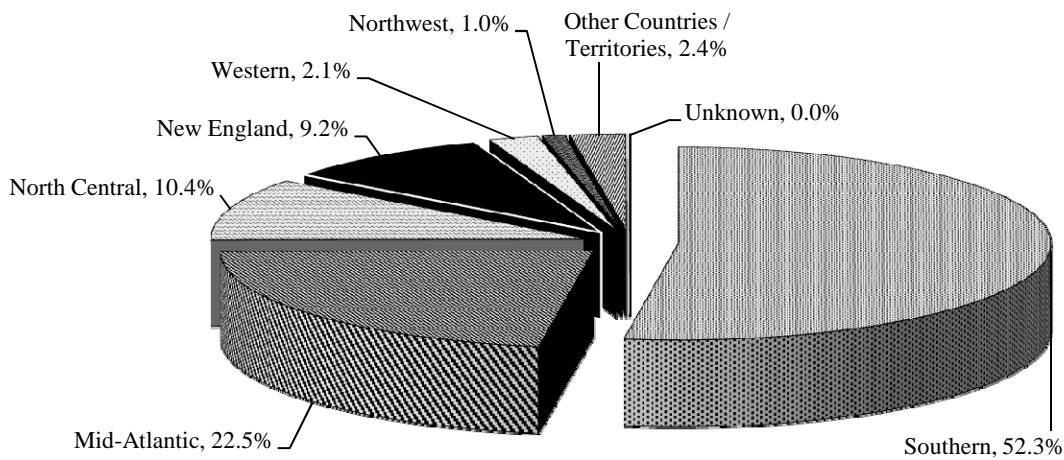


Alamance	14	Cumberland	15	Johnston	6	Randolph	5
Alexander	0	Currituck	0	Jones	1	Richmond	1
Alleghany	2	Dare	9	Lee	11	Robeson	7
Anson	2	Davidson	28	Lenoir	0	Rockingham	22
Ashe	7	Davie	15	Lincoln	3	Rowan	7
Avery	0	Duplin	0	Macon	2	Rutherford	4
Beaufort	0	Durham	35	Madison	1	Sampson	0
Bertie	1	Edgecombe	1	Martin	1	Scotland	2
Bladen	3	Forsyth	252	McDowell	0	Stanly	1
Brunswick	3	Franklin	3	Mecklenburg	119	Stokes	8
Buncombe	27	Gaston	17	Mitchell	9	Surry	16
Burke	10	Gates	0	Montgomery	5	Swain	3
Cabarrus	11	Graham	0	Moore	16	Transylvania	3
Caldwell	4	Granville	1	Nash	12	Tyrrell	0
Camden	1	Greene	2	New Hanover	28	Union	16
Carteret	3	Guilford	97	Northampton	2	Vance	4
Caswell	0	Halifax	5	Onslow	9	Wake	120
Catawba	18	Harnett	5	Orange	25	Warren	0
Chatham	4	Haywood	1	Pamlico	1	Washington	1
Cherokee	0	Henderson	6	Pasquotank	2	Watauga	3
Chowan	1	Hertford	3	Pender	1	Wayne	4
Clay	1	Hoke	1	Perquimans	0	Wilkes	13
Cleveland	11	Hyde	0	Person	4	Wilson	7
Columbus	1	Iredell	19	Pitt	10	Yadkin	7
Craven	2	Jackson	0	Polk	2	Yancey	1

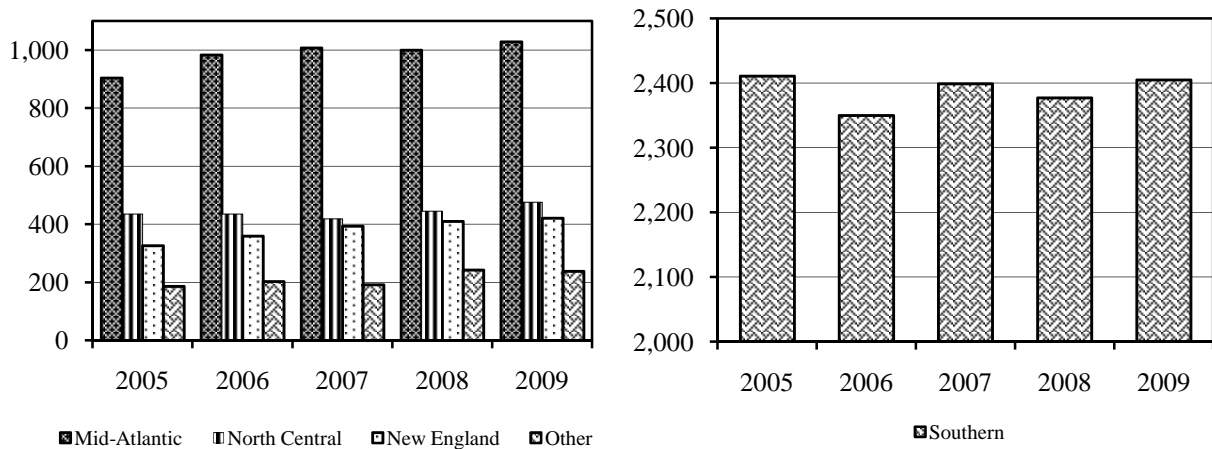
Undergraduate Geographical Distribution by Region, Fall 2005-2009

Region	2005	%	2006	%	2007	%	2008	%	2009	%
Southern	2,411	56.6%	2,350	54.2%	2,388	54.1%	2,377	53.1%	2,391	52.3%
Mid-Atlantic	904	21.2%	984	22.7%	1,007	22.8%	1,000	22.3%	1,029	22.5%
North Central	436	10.2%	436	10.1%	418	9.5%	446	10.0%	475	10.4%
New England	326	7.6%	359	8.3%	394	8.9%	410	9.2%	421	9.2%
Western	78	1.8%	84	1.9%	87	2.0%	96	2.1%	98	2.1%
Northwest	39	0.9%	43	1.0%	42	1.0%	50	1.1%	44	1.0%
Other Countries / Territories	67	1.6%	76	1.8%	75	1.7%	94	2.1%	110	2.4%
Unknown	2	0.0%	0	0.0%	1	0.0%	3	0.1%	1	0.0%
Total	4,263		4,332		4,412		4,476		4,569	

Undergraduate Geographical Distribution by Region, (%) Fall 2009



Undergraduate Geographical Distribution by Region, Fall 2005-2009

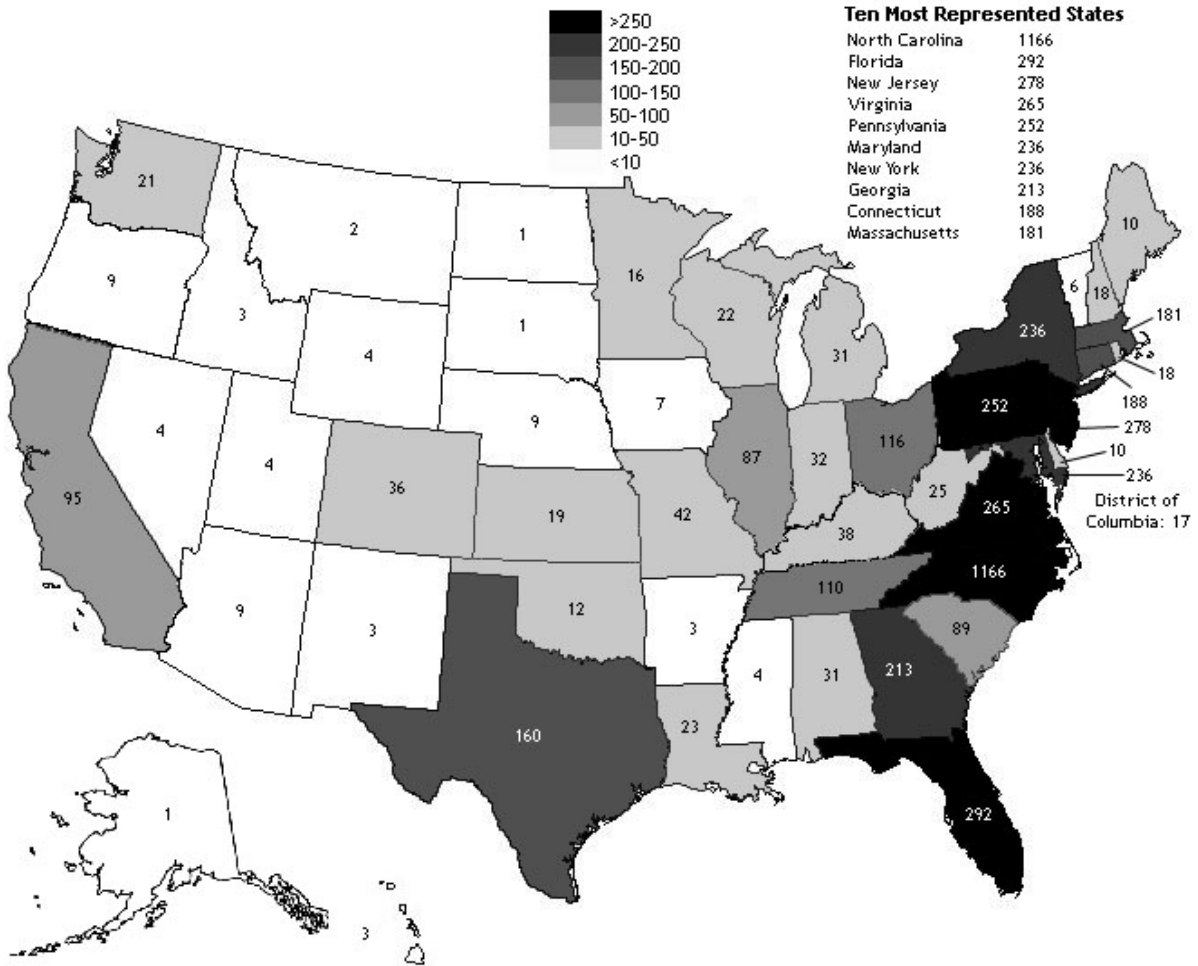


Undergraduate Geographical Distribution by Region & State, Fall 2005-2009

		2005-06	2006-07	2007-08	2008-09	2009-10	2009-2010 Totals
Southern	Alabama	42	47	38	33	31	
	Florida	234	244	268	282	292	
	Georgia	235	224	228	208	213	
	Kentucky	56	52	49	39	38	
	Louisiana	17	15	20	22	23	
	Mississippi	3	2	2	3	4	
	North Carolina	1,180	1,105	1,091	1,139	1,166	(26% of total enrollment)
	South Carolina	129	125	110	101	89	
	Tennessee	92	112	116	111	110	
	Texas	186	176	190	169	160	
	Virginia	237	248	276	270	265	2,391
Middle Atlantic	Delaware	17	16	13	13	10	
	District of Columbia	13	14	15	17	17	
	Maryland	231	222	228	220	236	
	New Jersey	244	276	278	275	278	
	New York	168	200	226	236	236	
	Pennsylvania	231	256	247	239	252	1,029
	New England	Connecticut	117	135	153	168	188
Maine		14	10	11	11	10	
Massachusetts		150	168	187	192	181	
New Hampshire		24	25	22	20	18	
Rhode Island		12	12	12	13	18	
Vermont		9	9	9	6	6	421
Northwest	Alaska	0	1	1	1	1	
	Idaho	4	4	4	1	3	
	Montana	3	4	2	3	2	
	Nevada	4	2	2	3	4	
	Oregon	7	8	10	11	9	
	Utah	4	5	2	4	4	
	Washington	17	19	21	27	21	44
North Central	Arizona	12	12	11	12	9	
	Arkansas	6	3	5	2	3	
	Colorado	27	37	35	34	36	
	Illinois	65	68	70	74	87	
	Indiana	30	30	34	37	32	
	Iowa	7	7	7	8	7	
	Kansas	21	23	19	21	19	
	Michigan	20	22	21	23	31	
	Minnesota	16	15	14	15	16	
	Missouri	28	20	25	39	42	
	Nebraska	3	3	5	6	9	
	New Mexico	5	4	3	4	3	
	North Dakota	0	0	0	0	1	
	Ohio	144	136	121	121	116	
	Oklahoma	9	9	6	9	12	
	South Dakota	1	1	1	1	1	
	West Virginia	22	21	17	18	25	
Wisconsin	15	20	20	17	22		
Wyoming	5	5	4	5	4	475	
Western	California	76	83	84	93	95	
	Hawaii	2	1	3	3	3	98
Territories		1	0	3	4	6	
Unknown		2	0	1	3	1	
Other Countries		66	76	72	90	104	111
Total		4,263	4,332	4,412	4,476	4,569	

Note: Regions are defined by Accrediting Agencies

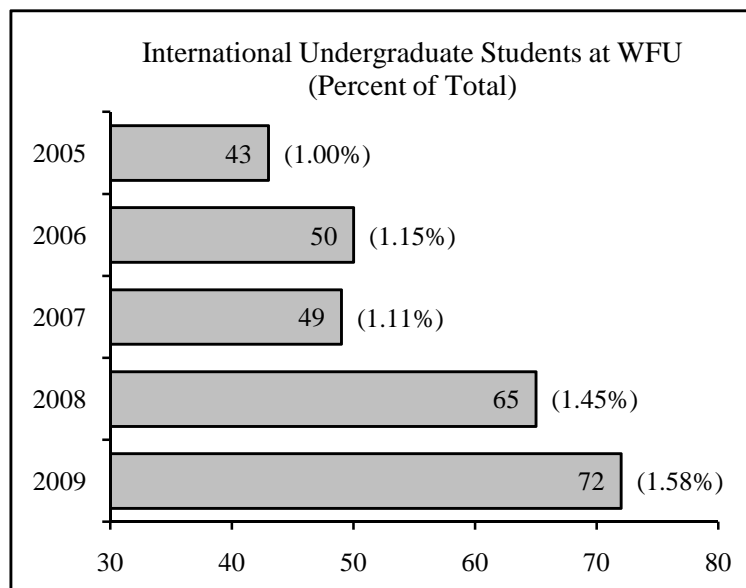
Undergraduates from the United States, Fall 2009



Undergraduate International Students, Fall 2009

Countries Represented*

Bermuda	New Zealand
Brunei	Nigeria
Canada	Peru
China	Poland
France	Russia
Germany	Saudi Arabia
Honduras	South Africa
India	South Korea
Japan	Taiwan
Kenya	Ukraine
Netherlands	United Kingdom



*Source: Center for International Studies

Total Number of Degrees Granted, 1990-2009

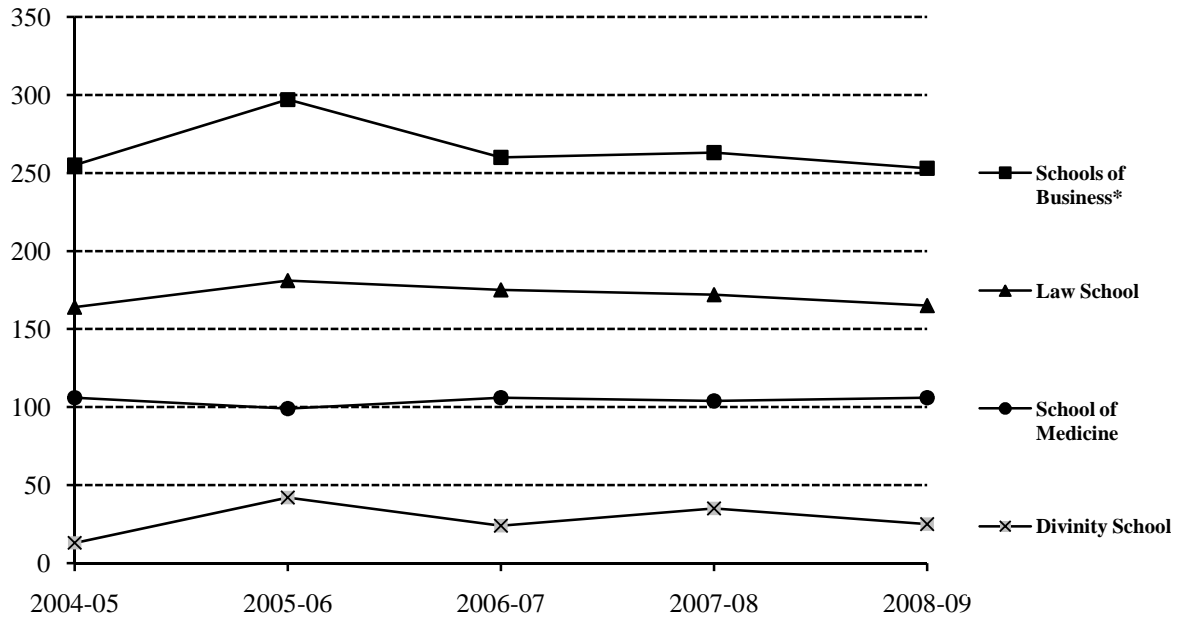
Year	Undergraduate	Master	Divinity	Doctorate	Medicine	Law	Total	Cumulative Total	Honorary
1989-90	843	271	0	14	99	148	1,375	40,239	7
1990-91	782	262	0	16	101	155	1,316	41,555	5
1991-92	819	304	0	19	99	147	1,388	42,943	5
1992-93	869	326	0	18	107	160	1,480	44,423	5
1993-94	817	315	0	16	91	150	1,389	45,812	4
1994-95	829	337	0	17	114	149	1,446	47,258	6
1995-96	763	333	0	23	96	159	1,374	48,632	8
1996-97	887	399	0	20	105	155	1,566	50,198	6
1997-98	898	432	0	32	106	145	1,613	51,811	6
1998-99	878	439	0	30	110	157	1,614	53,425	5
1999-00	884	454	0	28	103	150	1,619	55,044	7
2000-01	901	469	0	25	109	153	1,657	56,701	3
2001-02	906	460	20	25	99	155	1,645	58,346	5
2002-03	916	477	20	35	91	159	1,698	60,044	5
2003-04	1,000	547	15	39	107	149	1,857	61,901	5
2004-05	953	498	13	48	106	152	1,770	63,671	3
2005-06	1,003	549	42	39	99	170	1,902	65,573	4
2006-07	967	509	24	35	106	163	1,804	67,377	6
2007-08	1,028	531	35	56	104	149	1,903	69,280	6
2008-09	1,063	504	25	60	106	152	1,910	71,190	8

Number and Type of Degrees Granted, 2008 and 2009

Department/Program	2007-08									2008-09								
	Bachelor*			Master			Doctorate			Bachelor*			Master			Doctorate		
	M	F	Total	M	F	Total	M	F	Total	M	F	Total	M	F	Total	M	F	Total
Accountancy	9	9	18	35	23	58				14	11	25	42	26	68			
Anthropology	1	5	6							6	20	26						
Art History	1	10	11							1	13	14						
Biology	31	30	61	1	2	3	0	1	1	31	36	67	2	4	6	1	3	4
Business	54	46	100							44	55	99						
Chemistry	18	11	29	1	5	6	0	0		11	18	29	4	1	5	2	2	4
Chinese				0	0					1	0	1						
Classical Studies	0	2	2							0	2	2						
Communication	18	54	72	3	6	9				27	43	70	3	6	9			
Computer Science	6	2	8	7	0	7				9	0	9	5	1	6			
Counseling				7	9	16							2	12	14			
Economics	56	20	76							85	26	111						
Education	2	12	14	9	25	34				3	20	23	8	23	31			
English	18	38	56	4	6	10				21	26	47	1	5	6			
Finance	69	18	87							60	16	76						
French	0	2	2							0	5	5						
German	2	2	4							2	1	3						
Greek	0	0								1	0	1						
Health & Exercise Science	17	37	54	1	6	7				14	50	64	3	4	7			
History	49	30	79							47	24	71						
Information Systems																		
Latin	1	1	2															
Liberal Studies				4	9	13							2	6	8			
Mathematical Business	0	3	3							7	6	13						
Mathematical Economics	11	5	16							12	5	17						
Mathematics	3	5	8	4	4	8				5	9	14	6	2	8			
Music Performance	2	3	5							3	0	3						
Philosophy	9	6	15							15	8	23						
Physics	9	4	13	0	0		1	0	1	11	1	12				2	1	3
Political Science	49	47	96							39	42	81						
Psychology	24	70	94	3	11	14				19	50	69	4	5	9			
Religion	10	5	15	1	0	1				3	5	8	2	4	6			
Russian	1	1	2															
Sociology	16	19	35							10	24	34						
Spanish	10	19	29							12	15	27						
Studio Art	5	8	13							6	7	13						
Theatre	1	2	3							1	5	6						
Sub-Total	502	526	1028	80	106	186	1	1	2	520	543	1063	84	99	183	5	6	11
Biochemistry/Molecular Biology				0	1	1	3	1	4							4	4	8
Biomedical Engineering				1	2	3	2	1	3				1	1	2	4	2	6
Cancer Biology							2	6	8							2	1	3
Health Sciences Research				3	3	6							2	1	3			
Microbiology/Immunology				0	0		2	4	6							3	3	6
Molecular/Cellular Pathobiology							1	3	4							0	1	1
Molecular Genetics				0	0		2	3	5				2	2	4	2	2	4
Molecular Medicine				1	0	1	4	6	10							2	6	8
Neurobiology/Anatomy				0	0		4	0	4				1	0	1	2	1	3
Neuroscience				0	1	1	5	1	6							1	4	5
Physiology/Pharmacology				0	0		1	3	4							3	2	5
Physician Assistant				10	37	47							10	37	47			
Sub-Total				15	44	59	26	28	54				14	41	55	23	26	49
Divinity				19	16	35							12	13	25			
Law				9	14	23	85	64	149				10	3	13	94	58	152
Management - MBA				171	66	237							166	60	226			
Management - MA				13	13	26							17	10	27			
Medicine							54	50	104							57	49	106
Grand Total	502	526	1028	307	259	566	166	143	309	520	543	1063	303	226	529	179	139	318

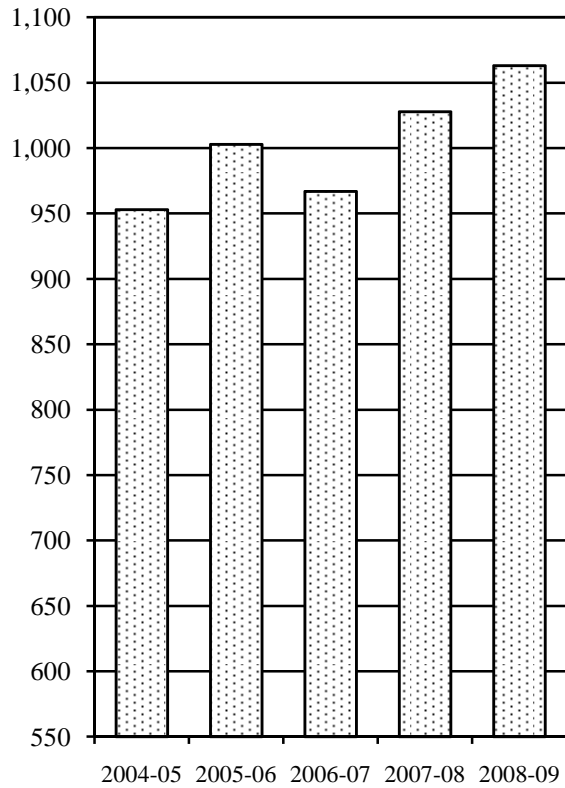
*Degrees are conferred based on the field of the primary major only. For an analysis of double majors, see page 27. For administrative purposes, a student with two majors must designate one of the fields as the primary major.

Number and Type of Degrees Granted, 2005-2009

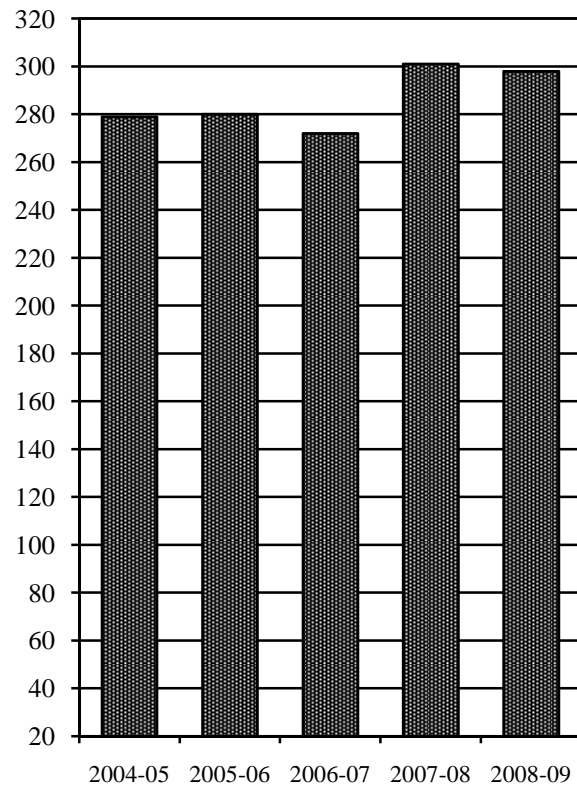


*MAM degree first awarded in 2007-2008

Undergraduate Degrees

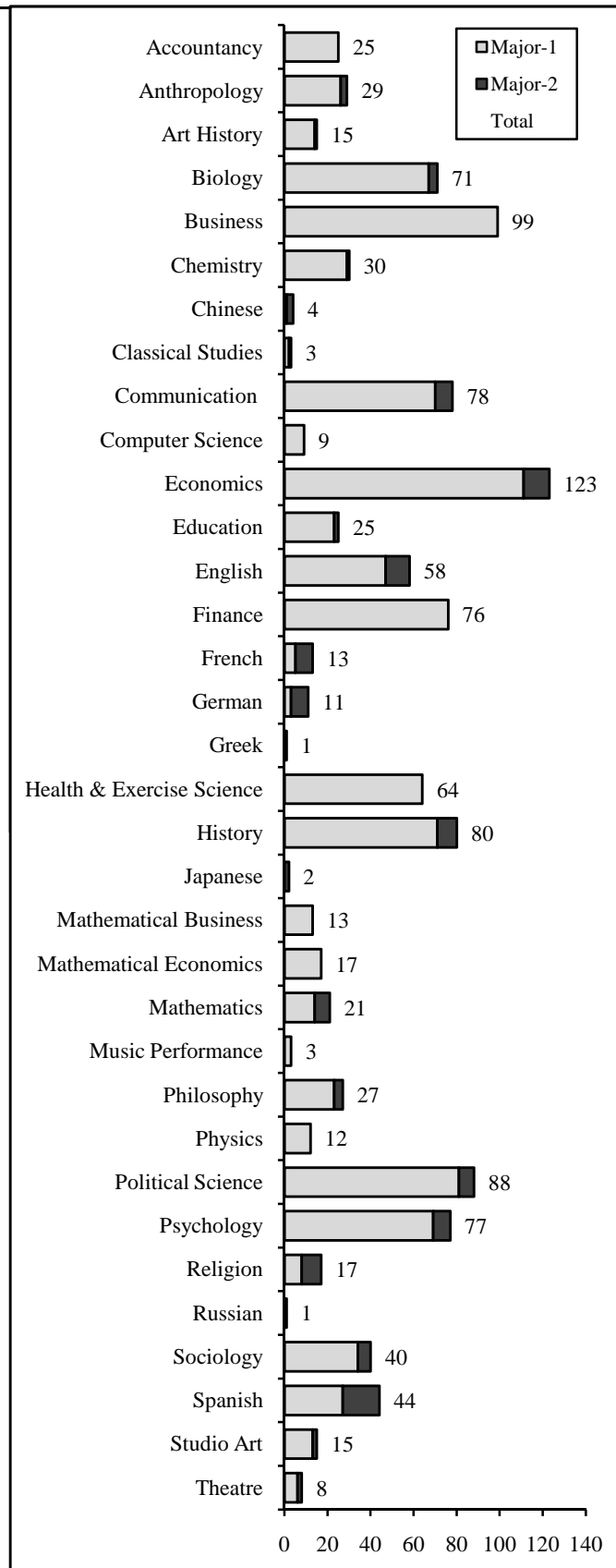


Graduate Degrees



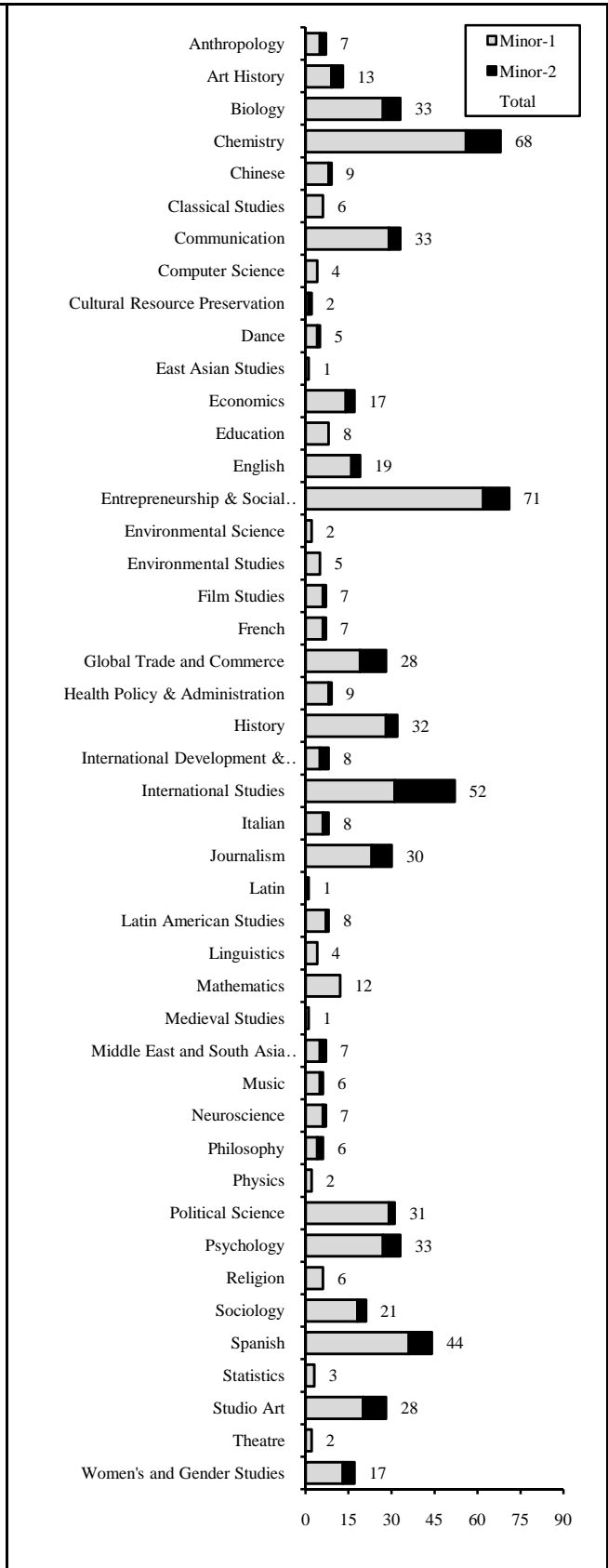
Graduates by Double Major, 2008-09

Program	Major-1	Major-2	Total
Accountancy	25	0	25
Anthropology	26	3	29
Art History	14	1	15
Biology	67	4	71
Business	99	0	99
Chemistry	29	1	30
Chinese	1	3	4
Classical Studies	2	1	3
Communication	70	8	78
Computer Science	9	0	9
Economics	111	12	123
Education	23	2	25
English	47	11	58
Finance	76	0	76
French	5	8	13
German	3	8	11
Greek	1	0	1
Health & Exercise Science	64	0	64
History	71	9	80
Japanese	0	2	2
Mathematical Business	13	0	13
Mathematical Economics	17	0	17
Mathematics	14	7	21
Music Performance	3	0	3
Philosophy	23	4	27
Physics	12	0	12
Political Science	81	7	88
Psychology	69	8	77
Religion	8	9	17
Russian	0	1	1
Sociology	34	6	40
Spanish	27	17	44
Studio Art	13	2	15
Theatre	6	2	8
Total	1063	136	1199

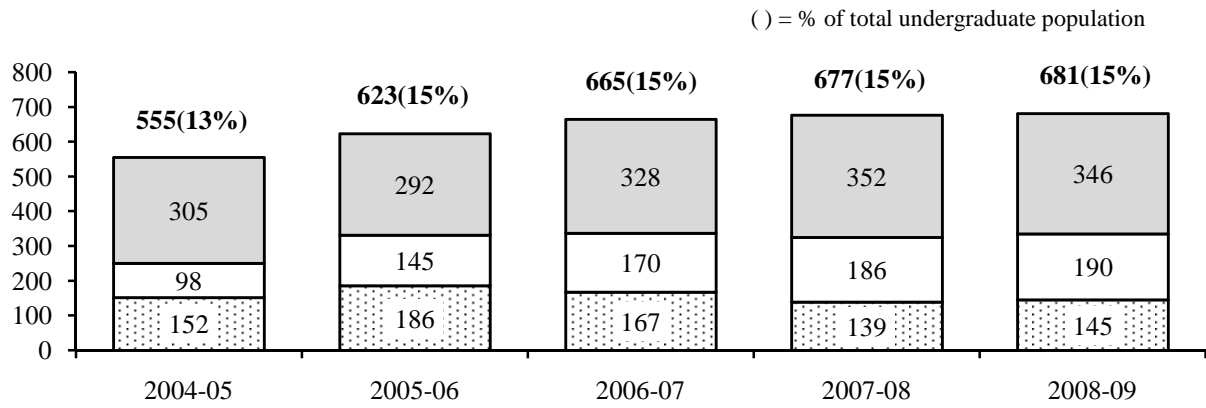


Graduates by Minor, 2008-09

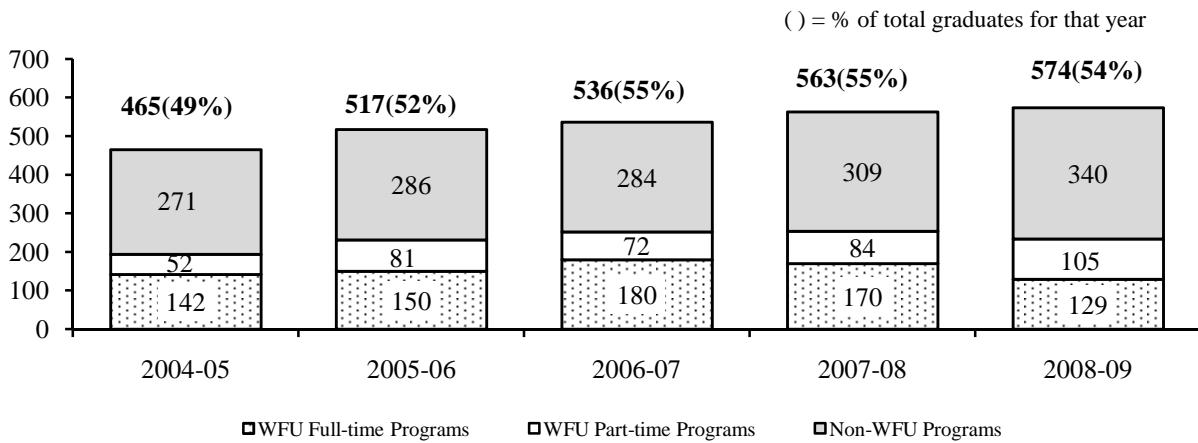
Program	Minor-1	Minor-2	Total
Anthropology	5	2	7
Art History	9	4	13
Biology	27	6	33
Chemistry	56	12	68
Chinese	8	1	9
Classical Studies	6	0	6
Communication	29	4	33
Computer Science	4	0	4
Cultural Resource Preservation	1	1	2
Dance	4	1	5
East Asian Studies	1	0	1
Economics	14	3	17
Education	8	0	8
English	16	3	19
Entrepreneurship & Social Enterprise	62	9	71
Environmental Science	2	0	2
Environmental Studies	5	0	5
Film Studies	6	1	7
French	6	1	7
Global Trade and Commerce	19	9	28
Health Policy & Administration	8	1	9
History	28	4	32
International Development & Policy	5	3	8
International Studies	31	21	52
Italian	6	2	8
Journalism	23	7	30
Latin	0	1	1
Latin American Studies	7	1	8
Linguistics	4	0	4
Mathematics	12	0	12
Medieval Studies	1	0	1
Middle East and South Asia Studies	5	2	7
Music	5	1	6
Neuroscience	6	1	7
Philosophy	4	2	6
Physics	2	0	2
Political Science	29	2	31
Psychology	27	6	33
Religion	6	0	6
Sociology	18	3	21
Spanish	36	8	44
Statistics	3	0	3
Studio Art	20	8	28
Theatre	2	0	2
Women's and Gender Studies	13	4	17
TOTAL	589	134	723



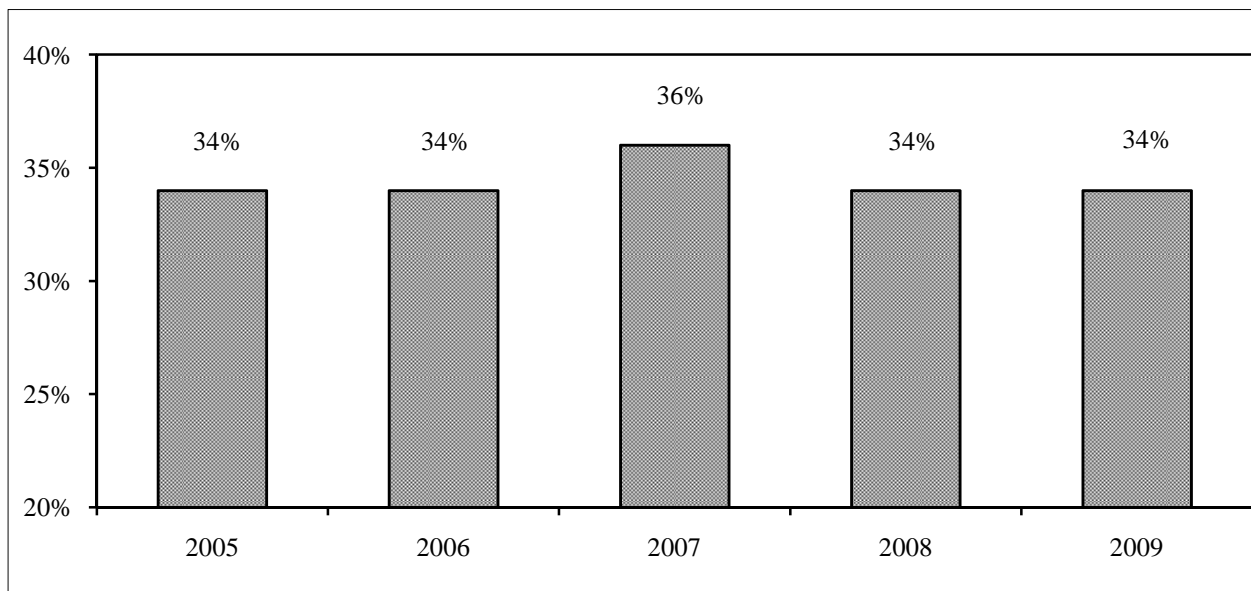
Undergraduates Receiving Degree Credits Abroad, 2005-2009



Senior Graduates Receiving Degree Credits Abroad, 2005-2009



Undergraduates Receiving Academic Distinction*, 2005-2009

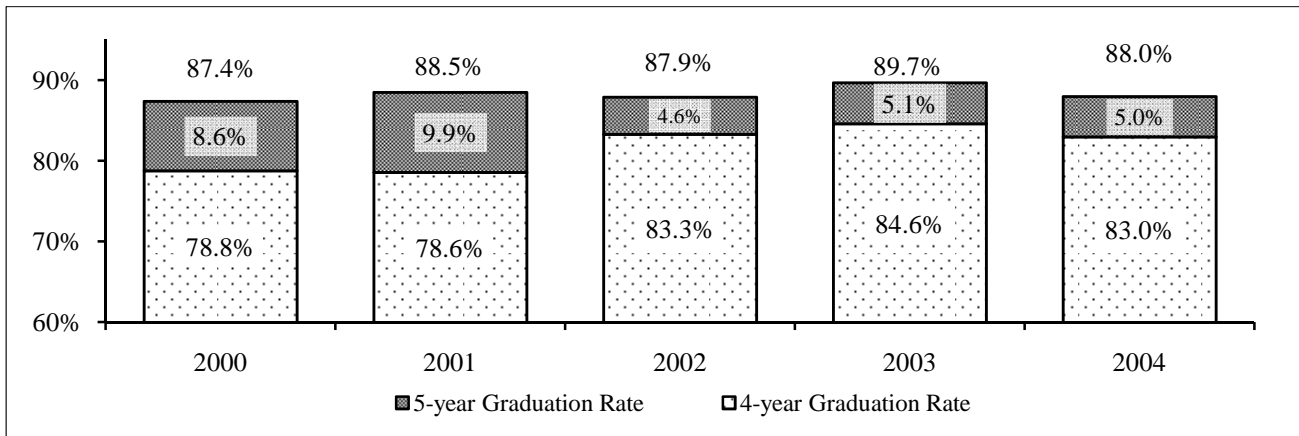


* Minimum criteria: cum laude - 3.4, magna cum laude - 3.6, summa cum laude - 3.8; May graduates only

Undergraduate Graduation and Attrition Rates

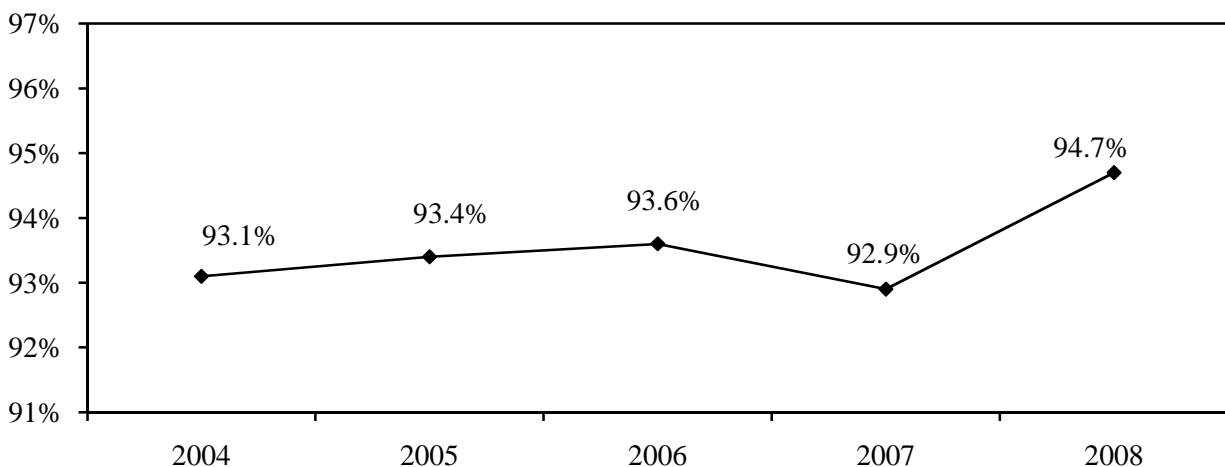
Entering First-time Freshmen, Fall 2000-2004

Year	Number Entering	Graduated (Within 4 Years)	Graduated (Within 5 Years)	Withdrew or Transferred	Academically Ineligible
2000	1,020	78.8%	87.4%	11.1%	0.1%
2001	983	78.6%	88.5%	10.5%	0.4%
2002	999	83.3%	87.9%	11.7%	0.2%
2003	1,003	84.6%	89.7%	9.4%	0.4%
2004	1,109	83.0%	88.0%	11.1%	0.1%



First-time Freshmen Retention Rate, 2004-2008

Fall	Total Enrollment	# Returned Following Fall	Retention Rate Following Fall
2004	1,109	1,032	93.1%
2005	1,119	1,045	93.4%
2006	1,121	1,049	93.6%
2007	1,123	1,043	92.9%
2008	1,201	1,137	94.7%



Placement of 2009 Graduating Class*

GRADUATE & PROFESSIONAL SCHOOLS

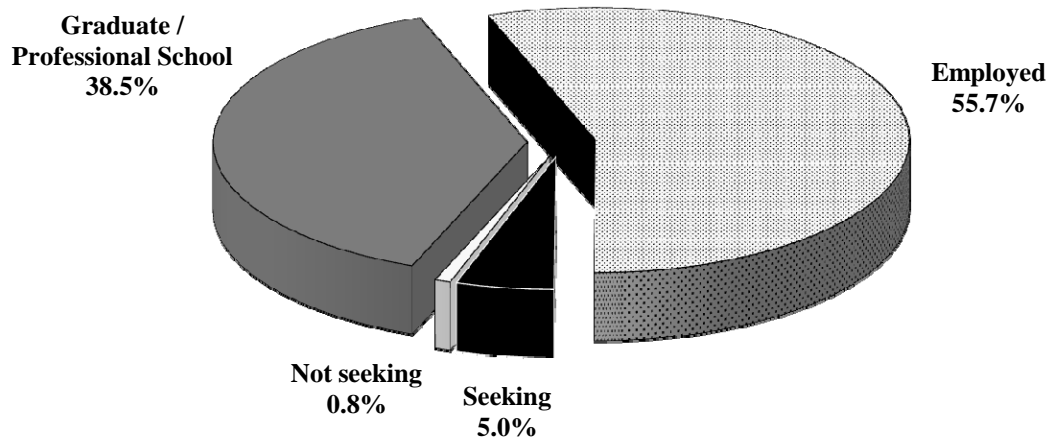
Deferred	0.5%	Medical School	3.8%
Dental School	0.7%	Nursing	0.1%
Divinity/Seminary	0.4%	Other Graduate Programs	1.2%
Graduate School	26.0%	Physician Assistant School	0.1%
Law School	5.0%	Physical Therapy School	0.3%
MBA School	0.1%		
		Total	38.5%

*Response to Placement Survey six months after graduation (79.05%)--Office of Career Services

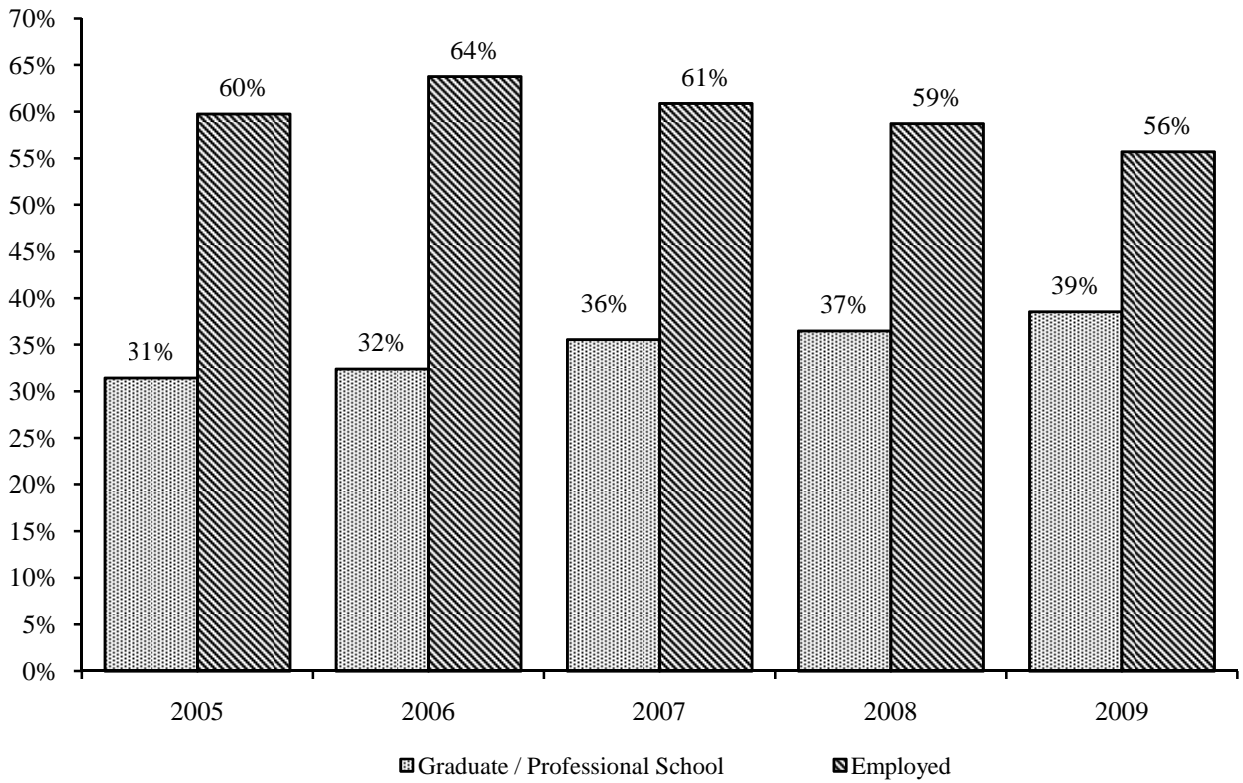
EMPLOYMENT

Accounting	0.1%	Legal Services	0.4%
Actuarial	0.1%	Logistics	0.1%
Administrative	1.5%	Management Trainee Programs	0.7%
Advertising	0.3%	Manufacturing	0.4%
Athletics/Coaching	0.1%	Marketing	3.0%
Consulting	3.1%	Media	0.4%
Creative	0.1%	Military	1.2%
Customer Service	0.8%	Nonscientific Research	1.0%
Education/Administration	2.5%	Operations	0.5%
Education/Teaching	7.3%	Other	2.5%
Entertainment	0.4%	Politics/Government	2.5%
Environmental	0.7%	Professional Athletics	1.4%
Event Planning	0.3%	Public Relations	0.3%
Financial Services	4.6%	Real Estate	0.8%
Fundraising	0.3%	Religious Occupations	0.5%
Health Services	2.3%	Sales	2.9%
Human Resources	0.3%	Scientific Research	3.7%
Human Services	1.8%	Temporary	3.5%
Information Technology	0.3%	Volunteer Work	0.3%
Insurance	1.1%	Writing/Editing	0.4%
Investment Banking	1.4%	Total	55.7%

OVERALL PLACEMENT OF CLASS -- 94.25%

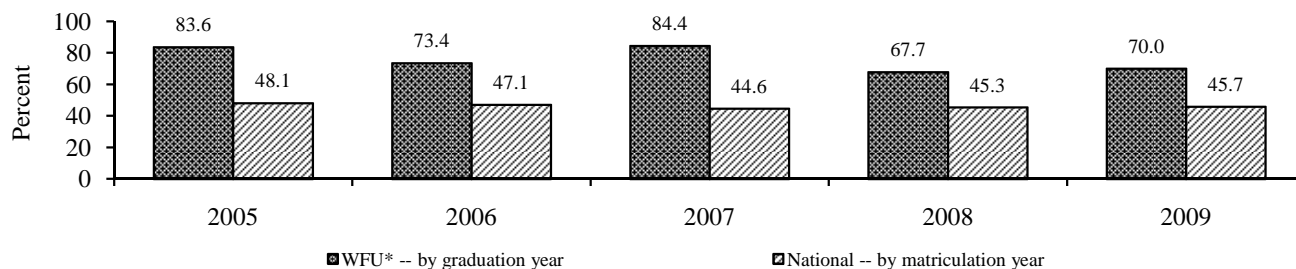


Placement of Graduating Classes, 2005-2009



Acceptance Rates to Medical School, 2005-2009

Comparison of WFU success rates with national pool of allopathic medical school students - Percent Wake Forest acceptances to allopathic and osteopathic schools of medicine



*Alumni who applied more than once were counted only once.

Note: 249 of 325 applicants (76.6% 5-year average) from the 2005-2009 graduation classes were accepted to 58 allopathic medical schools and to 8 osteopathic medical schools (Osteopathic: 11 students - 4.4% of accepted students). The four North Carolina medical schools accepted 96 students (38.6% of accepted students) as follows: Duke University School of Medicine - 3; The Brody School of Medicine of East Carolina University - 5; University of North Carolina School of Medicine - 24; Wake Forest University School of Medicine - 64. Wake Forest School of Medicine accepted 66.7% of students entering the four North Carolina schools (25.7% of all accepted students for the 5-year period).

Medical School Matriculations, 2005-2009

Albany	Ponce
Baylor	Rosalind Franklin University
Boston University	St. George's University - Granada
Brody of East Carolina University	SUNY Downstate
Chicago College of Osteopathic Medicine of Midwestern University	Temple University
Columbia University College of Physicians & Surgeons	Tufts
Drexel University	Tulane University
Duke University	UMDNJ - Robert Wood Johnson Medical School
Eastern Virginia Medical School	University at Buffalo
East Tennessee State University	University of Alabama
Emory University	University of Cincinnati
Florida State University	University of Colorado
Georgetown University	University of Connecticut
George Washington University	University of Florida
Harvard University	University of Kansas
Howard University	University of Kentucky
Indiana University	University of Louisville
Jefferson Medical College	University of Massachusetts
Johns Hopkins University	University of Miami
Lake Erie College of Osteopathic Medicine	University of Michigan
Lake Erie College of Osteopathic Medicine at Bradenton	University of New England College of Osteopathic Medicine
Louisiana State University - New Orleans	University of North Carolina - Chapel Hill
Louisiana State University - Shreveport	University of Pittsburgh
Loyola University	University of South Carolina
Medical College of Georgia	University of Tennessee
Medical University of South Carolina	University of Texas - Houston
Mercer University	University of Texas - San Antonio
New York Medical College	University of Virginia
NY College of Osteopathic Medicine of NY Institute of Technology	Vanderbilt University
Ohio State University	Virginia Commonwealth University
Ohio University College of Osteopathic Medicine	Wake Forest University
Pennsylvania State University	West Virginia College of Osteopathic Medicine
Philadelphia College of Osteopathic Medicine	West Virginia University

Applicants to Accredited Law Schools, 2008-2009

	WFU		National	
	Seniors	All	Seniors	All
Number of Applicants	66	174	26,546	86,571
Average LSAT				
Score	160.3	158.9	153.8	152.8
Percentile*	81st	78th	60th	56th
Undergraduate GPA	3.35	3.22	3.38	3.26
Admitted to ABA Law School(s)				
Number	62	147	20,518	58,371
Percent	94%	84%	77%	67%
Enrolled at a Law School				
Number	54	122	18,069	48,924
Percent	82%	70%	68%	57%
Admissions per Applicant	3.92	3.15	2.69	2.11

*Estimated

Law Schools Admitting Wake Forest Applicants, 2008-2009

An asterisk (*) indicates that a student from Wake Forest enrolled at the school

Albany Law School*	New York Law School	University of Colorado Law School*
American University*	New York University School of Law*	University of Connecticut*
Appalachian School of Law*	North Carolina Central Univ*	University of Dayton
Ave Maria School of Law	Northeastern University*	University of Denver College of Law
Barry University	Northern Illinois University	University of District of Columbia*
Baylor University	Northwestern University*	University of Florida Levin College*
Benjamin Cardozo School of Law	Notre Dame University*	University of Georgia*
Boston College Law School*	Nova Southeastern University	University of Illinois
Boston University	Ohio Northern University	University of Kansas*
Brooklyn Law School*	Ohio State University	University of Kentucky*
California Western School of Law	Pace University	University of Louisville - Brandeis
Campbell University School of Law*	Pennsylvania State University Dickinson	University of Maryland*
Case Western Reserve University†	Pepperdine University	University of Memphis
Catholic University of America*	Quinnipiac University School of Law	University of Miami
Chapman University School of Law*	Roger Williams University	University of Michigan*
The Charleston School of Law*	Rutgers University School of Law Newark	University of Minnesota*
Charlotte School of Law*	Rutgers--State University of New Jersey	University of Mississippi*
Chicago-Kent College of Law*	Saint John's University*	University of Missouri School of Law
Columbia University School of Law*	Saint Louis University School of Law*	University of Missouri Kansas City
Cornell Law School	Saint Mary's University	University of Nebraska
De Paul University	Samford University - Cumberland Law*	University of Nevada Las Vegas
Drexel University Law School	Santa Clara University*	University of North Carolina*
Duke University	Seattle University	University of Oregon School of Law*
Elon University School of Law*	Seton Hall University*	University of Pacific
Emory University*	Southern Methodist University*	University of Pittsburgh*
Faulkner Univ Thomas Jones School of Law	Stanford University Law School*	University of Richmond*
Florida Coastal School of Law *	Stetson University*	University of San Diego
Florida International	Suffolk University Law School	University of South Carolina*
Florida State University*	Syracuse University College of Law*	University of Southern California Law School
George Mason University School of Law	Temple University	University of St. Thomas - Minneapolis
George Washington University*	Texas Tech University*	University of Tennessee*
Georgetown University*	Texas Wesleyan University	University of Texas School of Law
Georgia State University*	Thomas Jefferson School of Law	University of Tulsa College of Law
Harvard Law School*	Thomas M Cooley Law School†	University of Utah
Hofstra University	Touro Clg. Jacob D. Fuchsberg Law Center	University of Virginia*
Howard University School of Law*	Tulane University	University of Wisconsin
Indiana University - Bloomington*	University of Akron	Valparaiso University
Indiana University - Indianapolis	University of Alabama	Vanderbilt University Law School
J Marshall University School of Law - Atlanta	University of Arizona*	Vermont Law School
Louisiana State University	University of Arkansas	Villanova University
Loyola University Chicago	University of Baltimore*	Wake Forest University*
Loyola University New Orleans	University of California Berkeley	Washburn University School of Law
Mercer University*	University of California Davis	Washington and Lee University*
Michigan State Univ College of Law	University of California Hastings	Washington University
Mississippi College School of Law	University of California Los Angeles	West Virginia University College of Law
New England Law - Boston*	University of Chicago	William and Mary Law School*



Faculty and Staff



Teaching Faculty* - Wake Forest University, Fall 2009

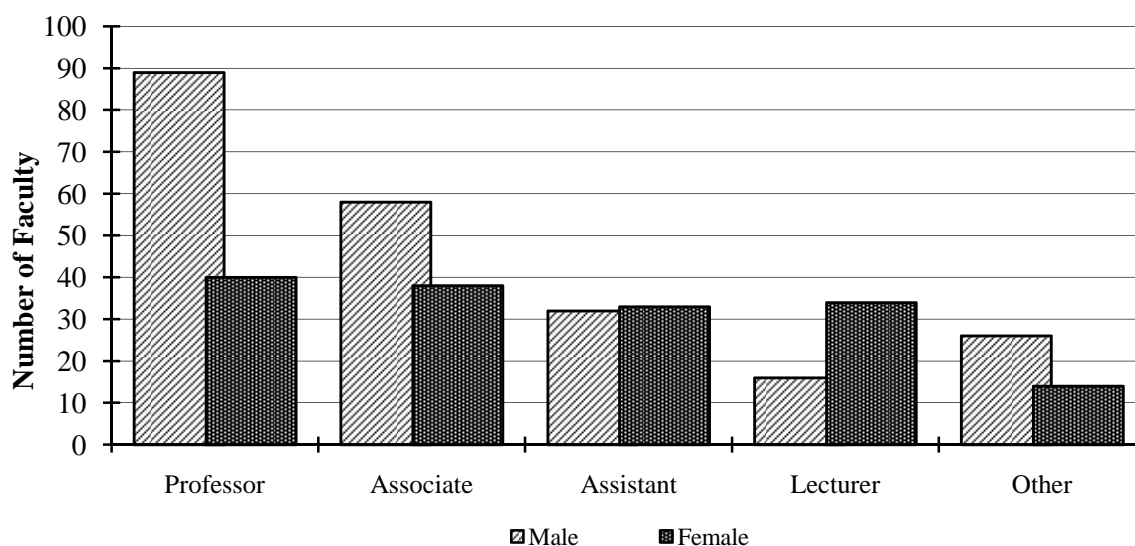
	Full-time Teaching		Teaching Administrators/Staff		Part-time Teaching		Total		FTE
	Male	Female	Male	Female	Male	Female	Male	Female	
Arts and Sciences	358		38		78		474		398.4
	209	149	20	18	50	28	279	195	
Divinity School	6		3		18		27		15.1
	4	2	2	1	13	5	19	8	
Law School	39		10		18		67		48.3
	23	16	3	7	15	3	41	26	
Schools of Business	59		4		29		92		70.0
	47	12	2	2	20	9	69	23	
Reynolda Campus Total	462		55		143		660		531.8
	283	179	27	28	98	45	408	252	
Medical School	907		17		512		1,436		998.0
	661	246	9	8	394	118	1064	372	
University Total	1,369		72		655		2,096		1,529.8
	944	425	36	36	492	163	1472	624	

* All faculty (including visiting) actually teaching Fall 2009

Full-time Faculty† by Rank and Gender, Fall 2009

	Male		Female		Total by Rank	
	Number	%	Number	%	Number	%
Professor	89	40%	40	25%	129	34%
Associate	58	26%	38	24%	96	25%
Assistant	32	14%	33	21%	65	17%
Lecturer	16	7%	34	21%	50	13%
Other	26	12%	14	9%	40	11%
Total	221	100%	159	100%	380	100%

†Includes those faculty of the College of Arts and Sciences who are "Full-time Instructional Faculty" as defined by the AAUP Faculty Compensation Survey



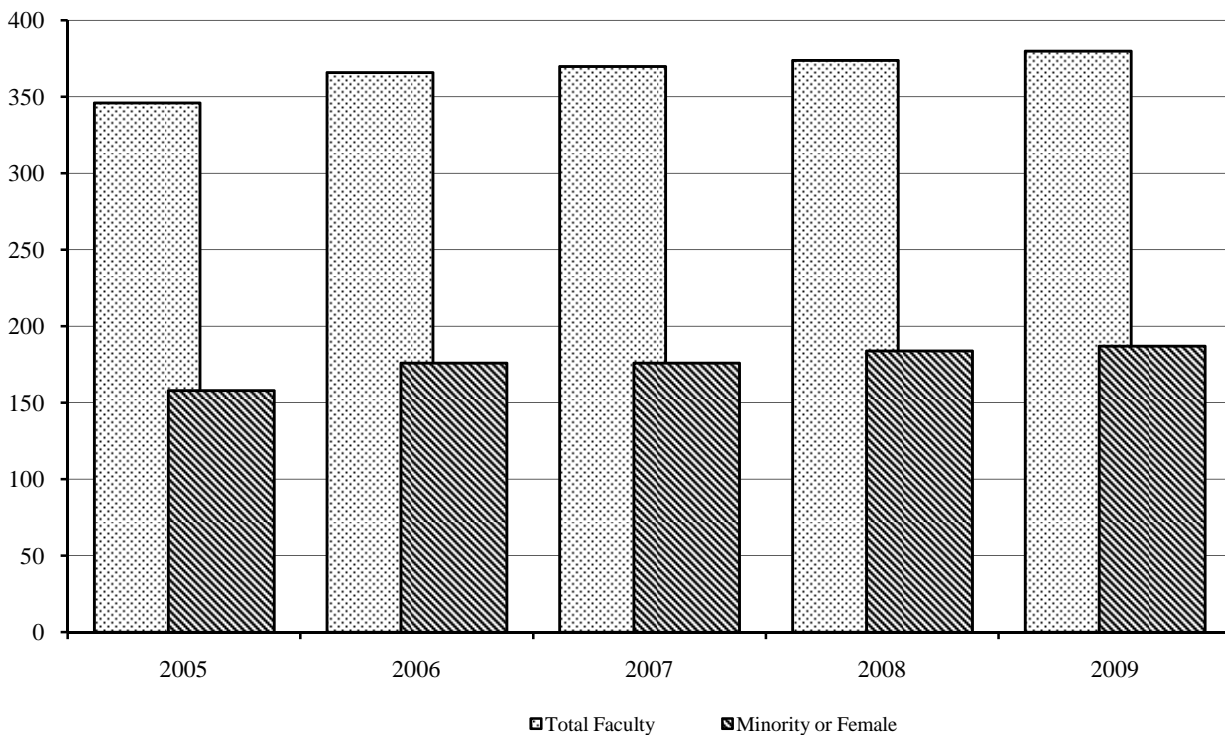
Full-time Faculty* by Ethnicity - Wake Forest University, Fall 2009

	Black		Amer. Indian		Asian		Hispanic		White		Other		Total
	#	%	#	%	#	%	#	%	#	%	#	%	
Arts and Sciences	14	3.7%	0	0.0%	19	5.0%	16	4.2%	321	84.5%	10	2.6%	380
Divinity School	1	16.7%	0	0.0%	0	0.0%	0	0.0%	4	66.7%	1	16.7%	6
Law School	6	18.2%	0	0.0%	0	0.0%	0	0.0%	27	81.8%	0	0.0%	33
Schools of Business	1	1.8%	1	1.8%	4	7.0%	2	3.5%	48	84.2%	1	1.8%	57
Medical School	25	2.8%	5	0.6%	107	11.8%	19	2.1%	744	82.0%	7	0.8%	907
Total	47	3.4%	6	0.4%	130	9.4%	37	2.7%	1,144	82.7%	19	3.1%	1,383

*"Full-time Instructional Faculty" as defined by the AAUP Faculty Compensation Survey (excludes medical school faculty)

Percentage of Full-time Minority and Female Faculty†, Arts and Sciences, Fall 2005-2009

Fall	Total Faculty	Number of Minority	% Minority	Number of Female	% Female	Total Percentage of Minority or Female
2005	346	39	11.3%	124(14 minority)	35%	42%
2006	366	44	12.0%	143(20 minority)	38%	45%
2007	370	47	12.7%	144(23 minority)	38%	44%
2008	374	51	13.6%	150(28 minority)	39%	46%
2009	380	59	15.5%	159(31 minority)	42%	49%

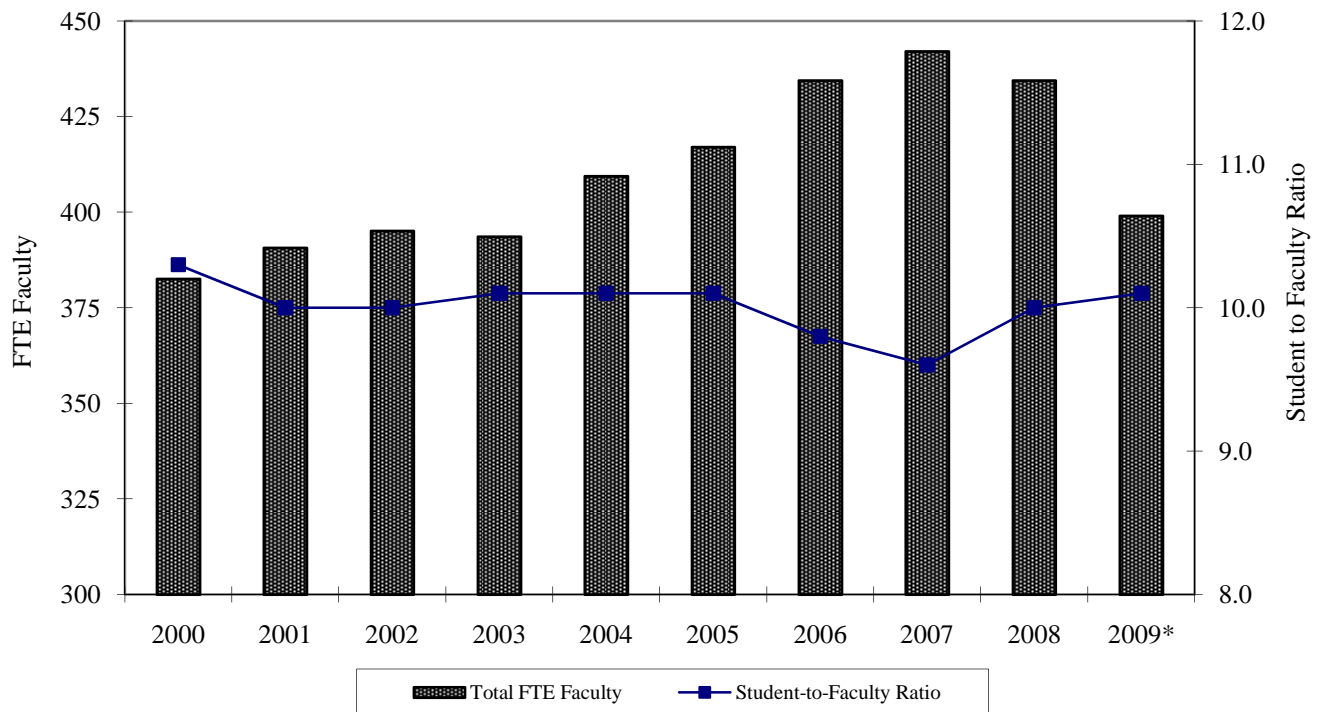


†"Full-time Instructional Faculty" as defined by the AAUP Faculty Compensation Survey

Teaching Equivalents and Student-to-Faculty Ratio*, Fall 2000-2009

	2000	2001	2002	2003	2004	2005	2006	2007	2008	2009*
Full-time Teaching Faculty	355	357	362	362	363	368	386	393	384	358
FTE	355	357	362	362	363	368	386	393	384	358
Part-time Teaching Faculty	74	84	75	88	82	94	93	85	94	78
FTE	23.3	28.2	26.2	28.3	33.9	37.6	40.0	34.6	36.1	30.4
Teaching Administrators/Staff	11	14	16	11	34	38	33	47	44	38
FTE	4.2	5.4	6.9	3.3	12.6	10.9	8.4	14.4	14.4	10.6
Total Teaching Faculty/FTE	440/383	455/391	453/395	461/394	479/409	500/417	512/434	525/442	522/434	474/398
Student-to-Faculty Ratio	10.3	10.0	10.0	10.1	10.1	10.1	9.8	9.6	10.0	10.1

*Starting in 2009, includes just Arts and Sciences. Prior years also include Calloway School of Business and Accountancy.



Percentage of Part-time Faculty†, Fall 2005-2009

	2005	2006	2007	2008	2009*
Total Number of Full-time Faculty and Teaching Administrators/Staff	406	419	440	428	396
Total Number of Part-time Faculty‡	94	93	85	94	78
Percentage of Part-time Faculty	18.8%	18.2%	16.2%	18.0%	16.5%
Percentage of Part-time FTE Faculty	9.0%	9.2%	7.8%	8.3%	7.6%

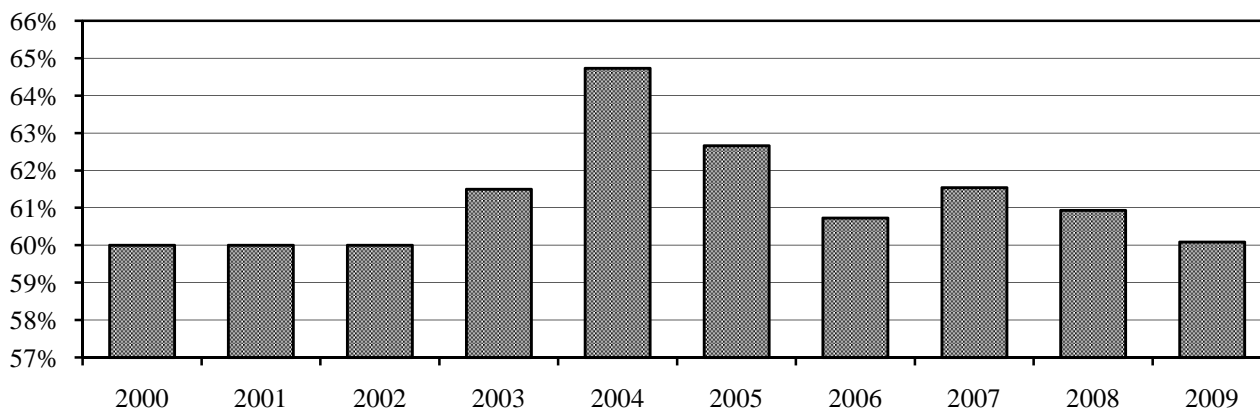
†Starting in 2009, includes teaching faculty in just Arts and Sciences. Prior years also include Calloway School of Business and Accountancy.

‡ Includes part-time faculty and part-time instructors, fee basis only

Tenure of Full-time Instructional Faculty* - Reynolda Campus, Fall 2009

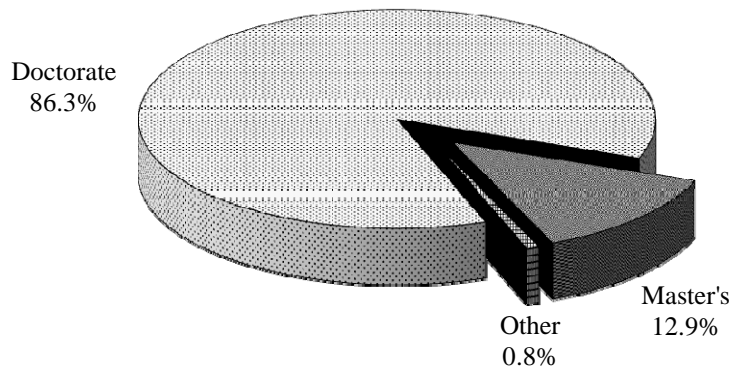
Rank	Tenured		Tenure Track		Non-Tenure Track		Total		% Tenured	
	Male	Female	Male	Female	Male	Female	Male	Female	Male	Female
Professor	121	48	0	0	0	0	121	48	100%	100%
Associate	75	42	2	1	0	0	77	43	97%	98%
Assistant	0	0	37	40	1	0	38	40	0%	0%
Lecturer	0	0	0	0	19	35	19	35	0%	0%
Other rank	0	0	0	0	34	21	34	21	0%	0%
Total	196	90	39	41	54	56	289	187	68%	48%

Percentage of Full-time Instructional Faculty* Tenured - Reynolda Campus, Fall 2000-2009



Highest Degree Earned for Full-Time Instructional Faculty*†, Fall 2009

Degree	Male		Female		Total Faculty	
	#	%	#	%	#	%
Doctorate	198	89.6%	130	81.8%	328	86.3%
Master's	22	10.0%	27	17.0%	49	12.9%
Other	1	0.5%	2	1.3%	3	0.8%
Total	221	100%	159	100%	380	100%



*"Full-time Instructional Faculty" as defined by the AAUP Faculty Compensation Survey

† Arts and Sciences

Tenure of Full-time Instructional Faculty* - School of Medicine, Fall 2009

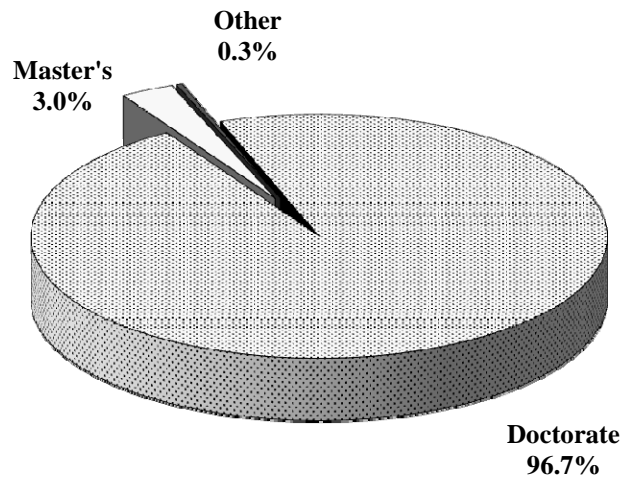
Rank	Tenured		Tenure Track		Non-Tenure Track		Total		% Tenured	
	Male	Female	Male	Female	Male	Female	Male	Female	Male	Female
Professor	127	22	79	10	2	0	208	32	61%	69%
Associate	17	6	145	35	6	4	168	45	10%	13%
Assistant	0	0	187	118	40	20	227	138	0%	0%
Instructor	0	0	42	17	16	14	58	31	0%	0%
Total	144	28	453	180	64	38	661	246	22%	11%

* Source: Office of the Dean

Highest Degree Earned for Full-Time Instructional Faculty* - School of Medicine, Fall 2009

Degree	Male		Female		Total Faculty	
	#	%	#	%	#	%
Doctorate	644	97.4%	233	94.7%	877	96.7%
Master's	15	2.3%	12	4.9%	27	3.0%
Other	2	0.3%	1	0.4%	3	0.3%
Total	661	100%	246	100%	907	100%

* Source: Office of the Dean

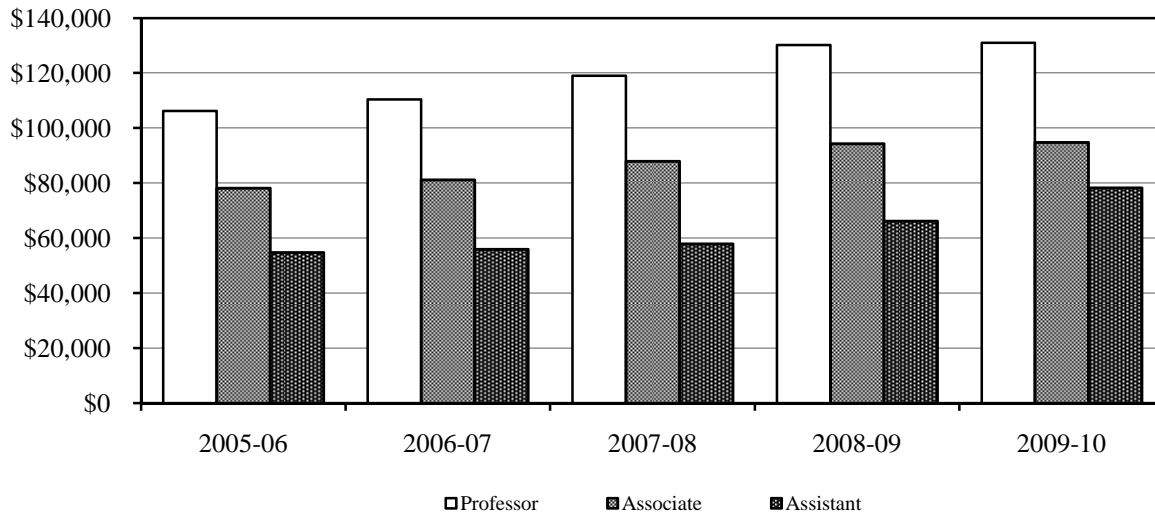


***Average Full-time Faculty Salary by Rank - Reynolda Campus**

Rank	2005-06	2006-07	2007-08	2008-09	2009-10
Professor	\$106,229	\$110,417	\$118,967	\$130,121	\$130,975
Associate	\$78,151	\$81,184	\$87,911	\$94,328	\$94,784
Assistant	\$54,787	\$55,909	\$57,899	\$66,212	\$78,282
†All Ranks	\$80,023	\$81,371	\$87,558	\$93,998	\$95,924

* Sources: *ACADEME* and Office of Human Resources

† Average salary of all ranks, *including lecturers and no rank*



Average Full-time Faculty Salaries - College, 2009-2010

Division	Professor	Associate	Assistant
Humanities and Fine Arts	\$112,656	\$82,155	\$66,411
Social Sciences	\$116,472	\$80,963	\$71,196
Natural Sciences and Mathematics	\$126,005	\$90,696	\$75,209
All Divisions	\$117,979	\$84,108	\$69,887

NOTE:

Humanities and Fine Arts include:

- Art
- Classical Languages
- East Asian Languages and Cultures
- English
- German and Russian
- Humanities
- Music
- Philosophy
- Religion
- Romance Languages
- Theatre and Dance
- Certain Interdepartmental and Chaired Professors
- Women's Studies

Social Sciences include:

- Anthropology
- Communication
- Counseling
- Economics
- Education
- History
- Political Science
- Psychology
- Sociology

Natural Sciences and Mathematics include:

- Biology
- Chemistry
- Computer Science
- Health and Exercise Science
- Mathematics
- Physics

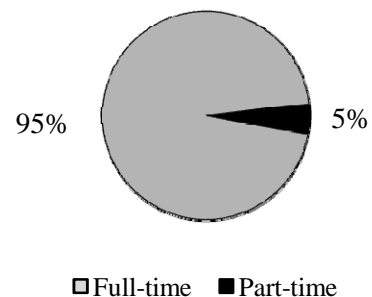
Full-time Staff by Category, Gender, and Ethnicity - Reynolda Campus, 2009

Category	White		Black		Hispanic		Asian		Native American		Unknown		Total
	M	F	M	F	M	F	M	F	M	F	M	F	
	Executive / Administrative	89	65	5	4	0	0	1	0	0	1	2	
Professional / Non-Faculty	206	272	17	25	4	1	5	11	1	1	6	3	552
Secretarial / Clerical	22	226	3	20	1	6	0	1	0	0	0	0	279
Technical / Paraprofessional	17	15	2	2	1	0	0	0	0	0	0	0	37
Skilled Craft	48	3	2	0	1	0	0	0	1	0	0	0	55
Service Maintenance	105	26	47	42	5	11	1	0	0	0	0	1	238
Total	487	607	76	93	12	18	7	12	2	2	8	4	1,328

Full-time Staff by Category, Gender, and Ethnicity - Bowman Gray Campus, 2009

Category	White		Black		Hispanic		Asian		Native American		Unknown		Total
	M	F	M	F	M	F	M	F	M	F	M	F	
	Executive / Administrative	77	195	2	12	0	2	0	3	0	1	0	
Professional / Non-Faculty	207	658	11	45	9	11	69	51	0	2	4	3	1,070
Secretarial / Clerical	30	902	11	114	0	13	1	9	0	6	0	1	1,087
Technical / Paraprofessional	94	210	12	31	6	5	6	19	0	1	1	2	387
Skilled Craft	21	0	1	0	1	0	0	1	0	0	0	0	24
Sales	0	1	0	0	0	0	0	0	0	0	0	0	1
Service Maintenance	14	63	9	37	0	1	0	0	0	0	1	0	125
Laborers	10	32	3	1	1	0	0	0	0	1	0	0	48
Operators	1	0	0	0	1	0	0	0	0	0	0	0	2
Total	454	2,061	49	240	18	32	76	83	0	11	6	6	3,036

University Staff Percentages



Full-time vs. Part-time Staff 2009

	Full-time	Part-time	Total
Reynolda Campus	1,328	61	1,389
Bowman Gray Campus	3,036	147	3,183
Total	4,364	208	4,572



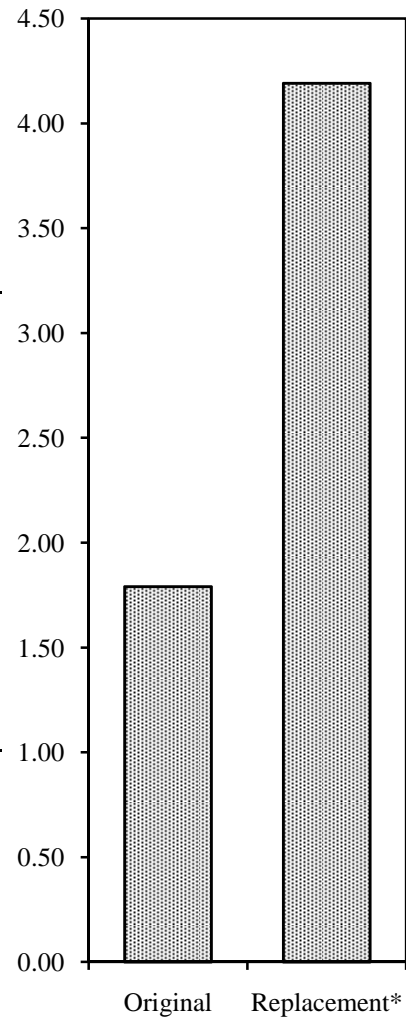
Facilities



Main Facilities Reynolda Campus - Building Profiles

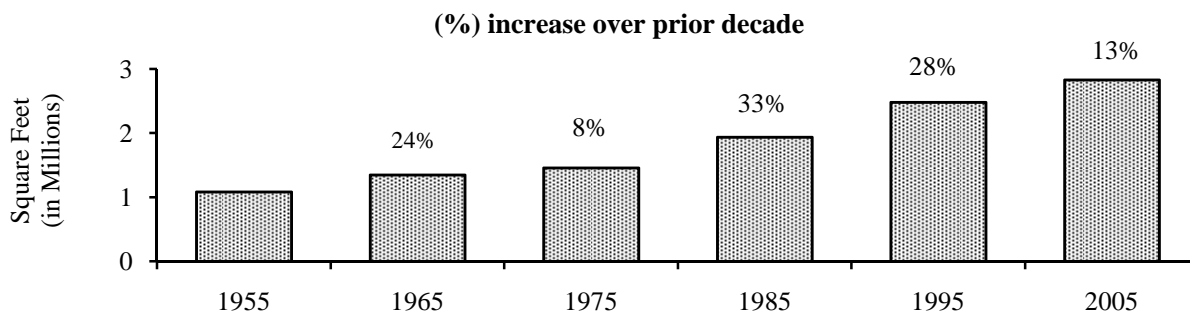
		Date	Gross Sq. ft.	Assignable Sq. ft.
Academic	Anthropology Laboratory	1987	6,400	6,000
	Calloway Center (Kirby & Manchester)	1969	89,185	54,394
	Carswell Hall	1955	61,297	38,707
	Greene Hall	1999	80,000	47,034
	Museum of Anthropology	1987	7,055	5,332
	Olin Physical Laboratory	1989	31,837	20,751
	Reynolds Gymnasium	1955	151,569	98,997
	Salem Hall	1955	55,090	35,164
	Scales Fine Art Center/Dance Studio	1976	146,523	78,839
	Tribble Hall	1963	80,168	46,311
	Wingate Hall & Wait Chapel	1955	72,770	41,668
	Winston Hall	1961	100,460	54,640
	Worrell Professional Center	1993	178,000	115,700
	Z. Smith Reynolds Library	1955	189,579	129,182
	Support	Benson Center	1990	100,422
Bookstore Warehouse/Photographer		1984	6,000	5,372
Central Heating Plant		1955	15,466	6,578
Environmental Health & Safety Building		1994	3,600	3,270
H.S. Moore Bldg.-Facilities Mgmt.		1956	24,162	19,693
Information Systems		1998	70,982	52,830
Landscaping Building		1982	5,450	4,883
Maintenance Garage Shop		1956	9,773	6,656
Manchester Athletic Center		1978	65,393	45,348
Miller Center		2001	64,845	38,337
Polo Sundry Shop		1988	1,221	946
President's House		1929	14,399	10,800
Reynolda Hall		1955	135,799	81,408
Starling Hall/Welch Center		1956	7,270	3,686
Townhouses	1976	7,897	5,803	
WFDD Radio	1920	3,769	2,638	
Residential (on Campus)	Babcock	1961	53,027	33,408
	Bostwick	1955	43,568	34,868
	Collins	1985	49,601	33,001
	Davis	1955	69,959	47,546
	Efird	1955	15,476	11,453
	Huffman	1955	15,476	11,514
	Johnson	1955	43,392	28,853
	Kitchin	1955	66,373	44,225
	Luter	1971	68,175	43,874
	Martin	1994	28,754	16,590
	North Campus Apartments Bldgs 2-10	1955	66,986	58,439
	Palmer	1982	12,942	8,317
	Piccolo	1982	12,942	7,980
	Polo	1998	78,562	43,759
	Poteat	1955	52,271	33,815
	Student Apartments	1956	28,012	23,600
	Taylor	1955	68,680	46,346

Total Cost* of Buildings Listed (x \$100,000,000)



*Building replacement cost does not include roads, parking lots, utilities and other non-building related infrastructure.

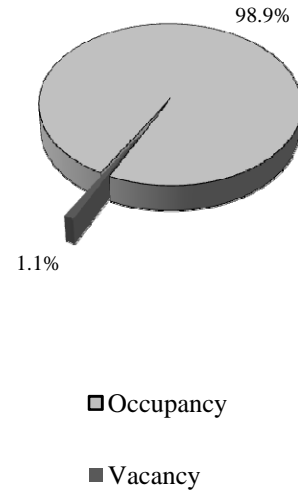
Gross Square Feet of Reynolda Campus Facilities by Decade



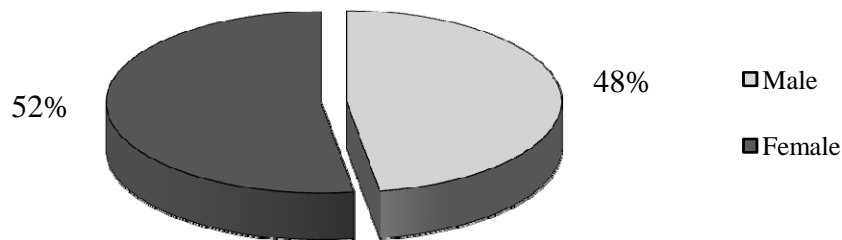
Student Housing Utilization, Fall 2009

Student Housing	Capacity	Occupancy
Babcock (Coed)	260	256
Bostwick (Coed)	204	202
Collins (Coed)	233	231
Davis (Coed)	301	297
Efird (Coed)	95	93
Huffman (Coed)	83	83
Johnson (Coed)	205	200
Kitchin (Coed)	274	273
Luter (Coed)	285	283
Martin (Coed)	95	94
North Campus Apartments (Coed)	188	186
Palmer (Coed)	67	65
Piccolo (Coed)	73	70
Polo (Coed)	194	194
Poteat (Coed)	239	238
Rosedale - Theme	14	14
Student Apartments (Coed)	110	110
Taylor (Coed)	248	245
1109 Polo Rd - Theme House	7	6
1115 Polo Rd - Theme House	13	11
1125 Polo Rd - Theme House	4	4
1145 Polo Rd - Theme House	13	13
1157 Polo Rd - Theme House	10	10
1210 Polo Rd - Theme House	13	13
Total	3,228	3,191

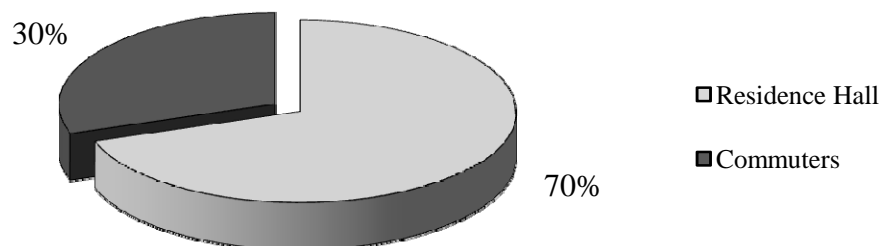
On-Campus
Occupancy Rate, Fall
2009



On-Campus Housing Utilization by Gender, Fall 2009



Distribution of Fall 2009 Undergraduate Enrollment by Type of Housing





Finances

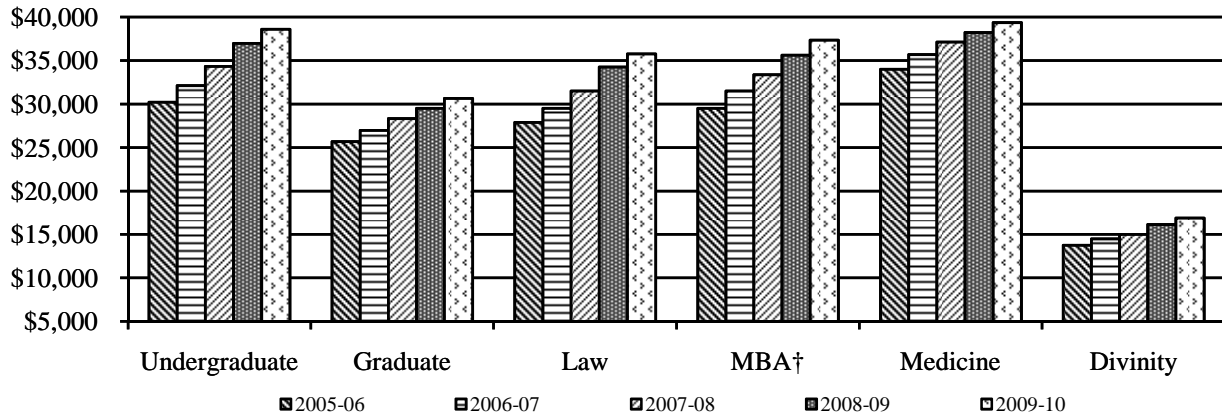


First-year Student Tuition and Fees*

School	2005-06	2006-07	2007-08	2008-09	2009-10
Undergraduate	\$30,210	\$32,140	\$34,330	\$36,975	\$38,622
Graduate School	\$25,700	\$26,985	\$28,340	\$29,506	\$30,674
Law School	\$27,900	\$29,500	\$31,500	\$34,266	\$35,766
Schools of Business [†]	\$29,500	\$31,500	\$33,400	\$35,616	\$37,366
Medical School	\$34,006	\$35,706	\$37,134	\$38,248	\$39,395
Divinity School	\$13,755	\$14,500	\$15,000	\$16,166	\$16,876

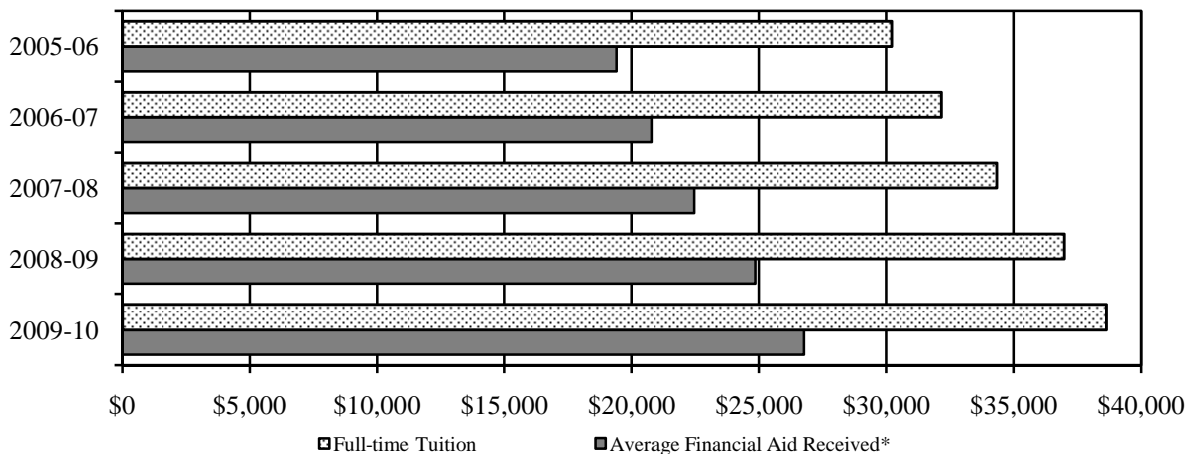
*Required fees that all full-time students must pay

[†] Full-time MBA program, first-year



Undergraduate Tuition and Financial Aid

Year	Average Financial Aid Received*	Full-time Tuition and Fees	Percentage
2005-06	\$19,401	\$30,210	64.2%
2006-07	\$20,787	\$32,140	64.7%
2007-08	\$22,450	\$34,330	65.4%
2008-09	\$24,852	\$36,975	67.2%
2009-10	\$26,751	\$38,622	69.3%



* Average amount of aid received from all sources (excluding parent loans) through the Office of Financial Aid.

Annual Costs* for 'Most Competitive'† Private Institutions, 2009-2010

Private Institution ‡	Room/Board	Tuition/Fees	Comprehensive Fees
George Washington University, DC	\$12,410	\$39,945	\$52,355
Boston College, MA	\$12,909	\$39,130	\$52,039
Georgetown University, DC	\$12,706	\$39,212	\$51,918
New York University, NY	\$12,986	\$38,765	\$51,751
Vassar College, NY	\$9,540	\$41,930	\$51,470
Washington University in St. Louis, MO	\$12,465	\$38,864	\$51,329
Bates College, ME	n/a	n/a	\$51,300
Vanderbilt University, TN	\$12,650	\$38,579	\$51,229
Johns Hopkins University, MD	\$12,040	\$39,150	\$51,190
Wesleyan University, CT	\$11,040	\$40,092	\$51,132
Connecticut College, CT	\$8,780	\$42,335	\$51,115
Tufts University, MA	\$10,746	\$40,342	\$51,088
University of Chicago, IL	\$11,697	\$39,381	\$51,078
Harvey Mudd College, CA	\$12,570	\$38,467	\$51,037
Claremont McKenna College, CA	\$12,525	\$38,510	\$51,035
Haverford College, PA	\$11,890	\$39,085	\$50,975
Colgate University, NY	\$9,970	\$40,970	\$50,940
Bowdoin College, ME	\$10,880	\$40,020	\$50,900
Middlebury College, VT	n/a	n/a	\$50,780
University of Southern California, CA	\$11,458	\$39,124	\$50,582
Scripps College, CA	\$11,850	\$38,700	\$50,550
Oberlin College, OH	\$10,480	\$40,004	\$50,484
Franklin and Marshall College, PA	\$10,430	\$39,980	\$50,410
Colby College, ME	n/a	n/a	\$50,320
Bucknell University, PA	\$9,504	\$40,816	\$50,320
Rensselaer Polytechnic Institute, NY	\$11,145	\$39,165	\$50,310
Tulane University, LA	\$9,680	\$40,564	\$50,244
Columbia University, NY	\$8,907	\$41,316	\$50,223
Carleton College, MN	\$10,428	\$39,777	\$50,205
Northwestern University, IL	\$11,703	\$38,461	\$50,164
Cornell University, NY	\$12,160	\$37,954	\$50,114
Duke University, NC	\$11,115	\$38,975	\$50,090
Bryn Mawr College, PA	\$12,000	\$38,034	\$50,034
University of Pennsylvania, PA	\$11,016	\$38,970	\$49,986
Dartmouth College, NH	\$11,295	\$38,679	\$49,974
Reed College, OR	\$10,250	\$39,700	\$49,950
University of Rochester, NY	\$11,200	\$38,690	\$49,890
Williams College, MA	\$10,390	\$39,490	\$49,880
Carnegie Mellon University, PA	\$10,030	\$39,833	\$49,863
Hamilton College, NY	\$10,100	\$39,760	\$49,860
Wellesley College, MA	\$11,732	\$38,062	\$49,794
Occidental College, CA	\$10,780	\$38,922	\$49,702
Pomona College, CA	\$12,651	\$37,017	\$49,668
Swarthmore College, PA	\$11,740	\$37,860	\$49,600
Brandeis University, MA	\$10,802	\$38,762	\$49,564
Stanford University, CA	\$11,463	\$37,881	\$49,344
College of the Holy Cross, MA	\$10,620	\$38,722	\$49,342
Massachusetts Institute of Technology, MA	\$11,360	\$37,782	\$49,142
Brown University, RI	\$10,280	\$38,848	\$49,128
Amherst College, MA	\$10,150	\$38,928	\$49,078
Wake Forest University, NC	\$10,410	\$38,622	\$49,032
Emory University, GA	\$10,896	\$38,036	\$48,932
Harvard University, MA	\$11,856	\$37,012	\$48,868
University of Notre Dame, IN	\$10,368	\$38,477	\$48,845
Lehigh University, PA	\$10,200	\$38,630	\$48,830
Villanova University, PA	\$10,320	\$38,305	\$48,625
University of Richmond, VA	\$8,480	\$40,010	\$48,490
Kenyon College, OH	\$7,260	\$40,980	\$48,240
Yale University, CT	\$11,000	\$36,500	\$47,500
Washington and Lee University, VA	\$8,410	\$38,877	\$47,287
Case Western Reserve University, OH	\$10,962	\$36,238	\$47,200
Princeton University, NJ	\$11,680	\$35,340	\$47,020
University of Miami, FL	\$10,800	\$36,188	\$46,988
Macalester College, MN	\$8,768	\$38,174	\$46,942
Whitman College, WA	\$9,260	\$36,940	\$46,200
California Institute of Technology, CA	\$10,755	\$34,584	\$45,339
Davidson College, NC	\$9,906	\$35,124	\$45,030
Lafayette College, PA	\$7,105	\$37,815	\$44,920
Rose-Hulman Institute of Technology, IN	\$9,441	\$34,560	\$44,001
Rice University, TX	\$11,230	\$31,248	\$42,478

*Source: US News and World Report: *America's Best Colleges* or Institution's website

†According to Barron's Profile of American Colleges

‡Private specialty schools (art and engineering) are not included

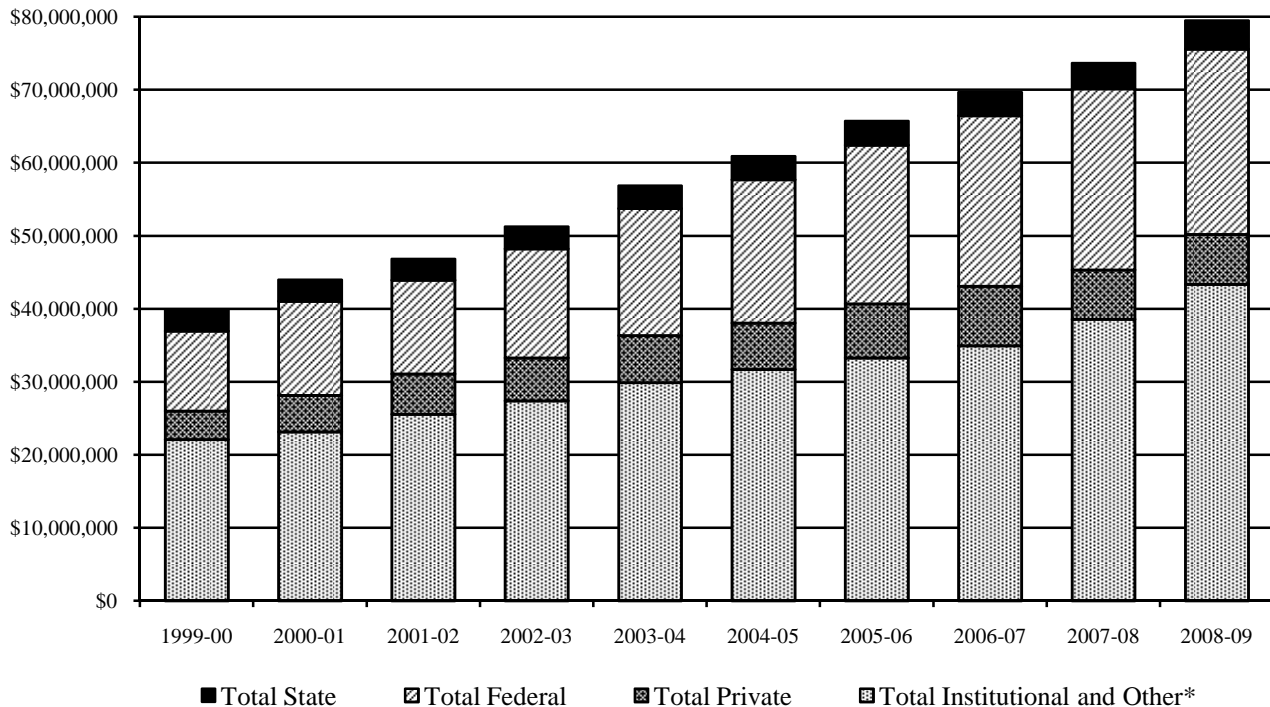
Undergraduate Student Financial Aid Programs, 2004-2009

Type of Aid	2004-05	2005-06	2006-07	2007-08	2008-09
Institutional Aid					
Athletic	\$8,187,431	\$8,502,420	\$9,322,390	\$9,723,108	\$10,288,020
Non-Athletic*	\$23,521,535	\$24,785,708	\$25,611,953	\$28,840,387	\$33,061,649
Total Institutional and Other*	\$31,708,966	\$33,288,128	\$34,934,343	\$38,563,495	\$43,349,669
Private Aid					
Grants	\$3,447,492	\$3,432,058	\$3,728,314	\$2,647,012	\$2,807,021
Loans	\$2,915,185	\$3,968,792	\$4,433,614	\$4,135,483	\$4,045,870
Total Private	\$6,362,677	\$7,400,850	\$8,161,928	\$6,782,495	\$6,852,891
Federal					
PELL	\$842,010	\$768,130	\$723,175	\$929,683	\$1,148,292
SEOG	\$641,638	\$717,398	\$595,384	\$716,465	\$898,092
Perkins	\$3,757,100	\$3,900,469	\$3,914,756	\$3,940,335	\$2,803,311
Work Study	\$620,375	\$668,920	\$683,411	\$755,996	\$988,375
Stafford†	\$5,643,488	\$5,991,858	\$7,248,738	\$7,961,973	\$8,569,313
Other	\$8,136,751	\$9,683,874	\$10,191,200	\$10,479,273	\$10,973,240
Total Federal	\$19,641,362	\$21,730,649	\$23,356,664	\$24,783,725	\$25,380,623
State					
NCLTG	\$1,939,950	\$1,943,100	\$1,877,200	\$1,959,261	\$2,132,568
NC Scholarship	\$1,222,375	\$1,300,075	\$1,285,625	\$1,399,713	\$1,503,050
Incentive Grant‡	\$7,000	\$12,250	\$5,600	\$10,500	\$10,500
Other	\$14,800	\$28,430	\$37,650	\$170,826	\$242,984
Total State	\$3,184,125	\$3,283,855	\$3,206,075	\$3,540,300	\$3,889,102
Total Financial Aid	\$60,897,130	\$65,703,482	\$69,659,010	\$73,670,015	\$79,472,285

* Includes tuition concessions

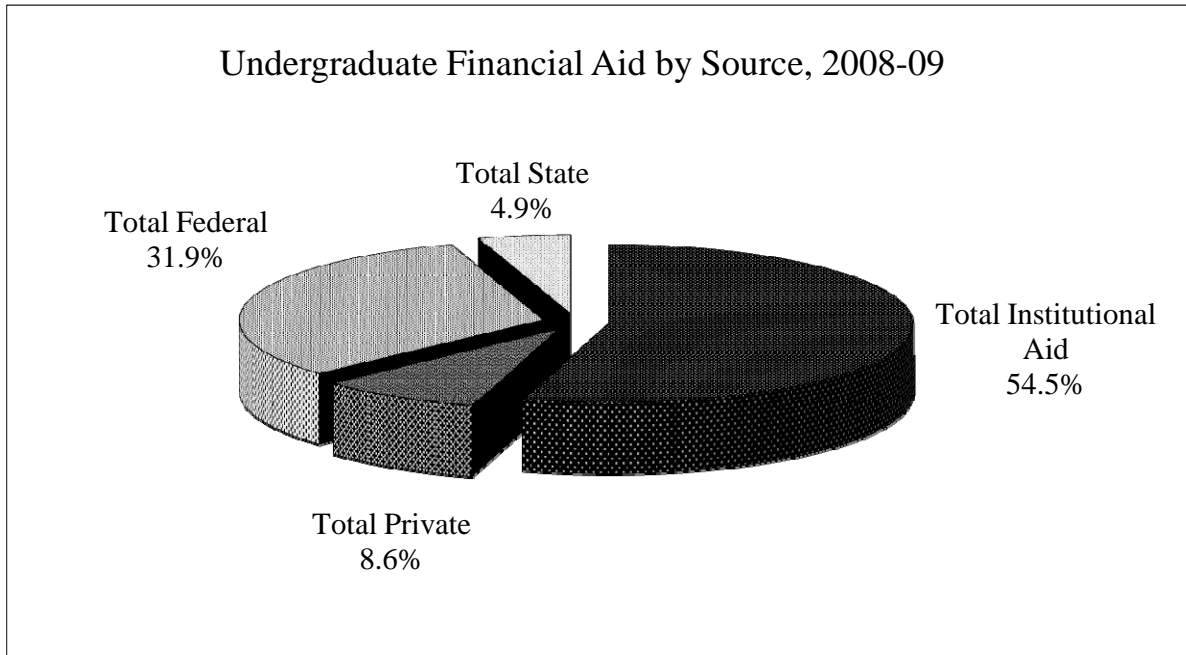
† This total includes both subsidized and unsubsidized loans.

‡ Federal and State share

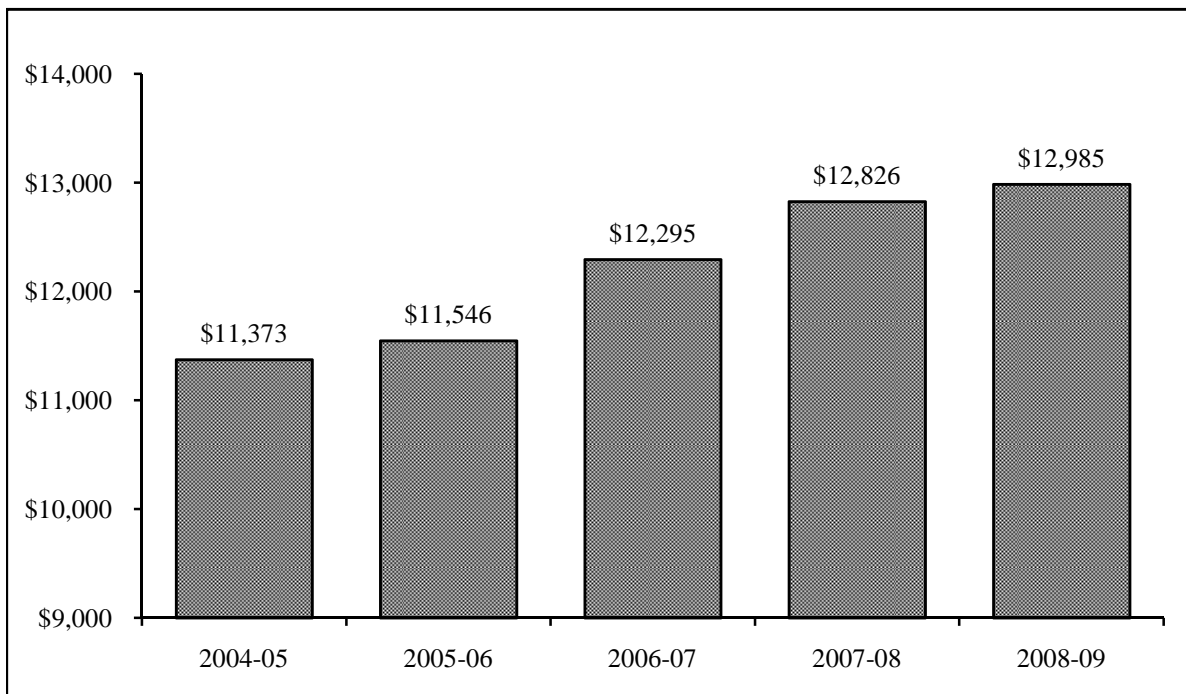


Undergraduate Financial Aid by Source, 2008-09

Type of Aid	Total Amount	% of Total
Total Institutional Aid	\$43,349,669	54.5%
Total Private	\$6,852,891	8.6%
Total Federal	\$25,380,623	31.9%
Total State	\$3,889,102	4.9%
Total	\$79,472,285	100.0%



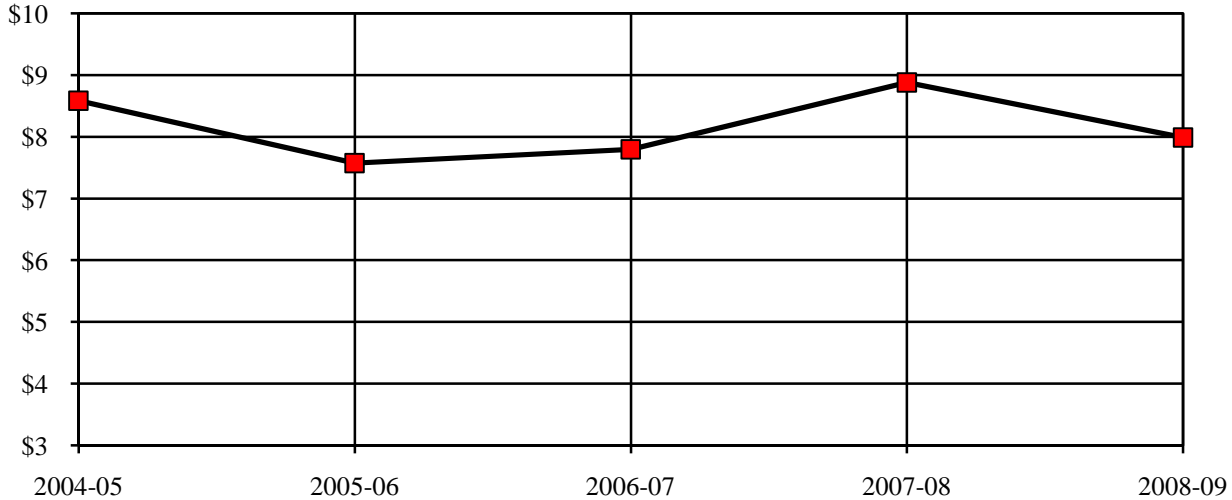
Average Instructional Dollars Expended Per Undergraduate Student, 2005-2009



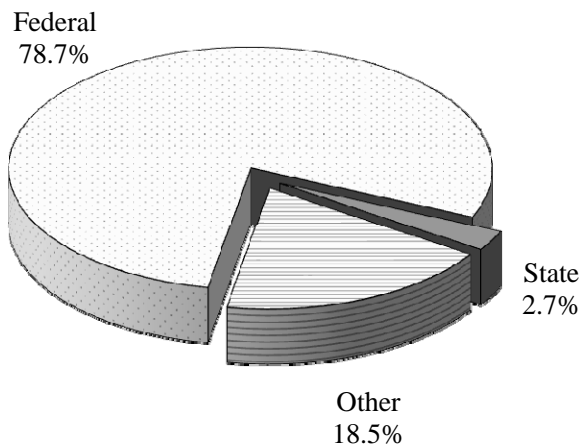
Research Grants by Fund Source, Reynolda Campus, 2005-2009

Fund Source	2004-05	2005-06	2006-07	2007-08	2008-09
Federal	\$7,428,944	\$6,468,937	\$6,345,880	\$7,345,083	\$6,289,995
State	\$42,692	\$74,205	\$60,000	\$41,603	\$219,267
Other	\$1,115,222	\$1,030,775	\$1,388,838	\$1,494,736	\$1,479,524
Total	\$8,586,858	\$7,573,917	\$7,794,718	\$8,881,422	\$7,988,786

Total Research Grants Received (x \$1,000,000)



Research Grants 2008-09



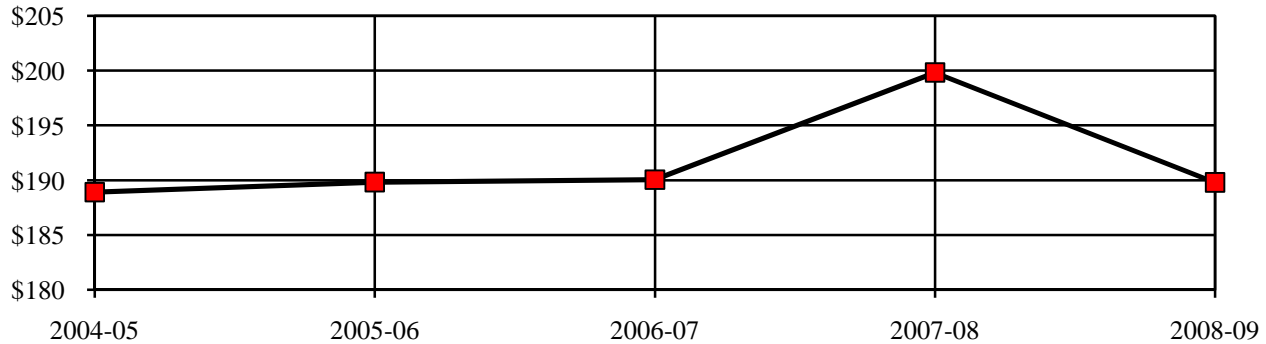
Research Grants by Discipline - FY 2009

Anthropology (14)	\$163,192
Babcock School (1)	\$70,578
Biology (14)	\$1,608,734
Chemistry (12)	\$986,077
Communication (2)	\$84,194
Computer Science (10.5)	\$310,733
Counseling (1)	\$14,031
Entrepreneurship & Liberal Arts(1)	\$230,513
Graduate School (1)	\$40,500
Health and Exercise Science (15)	\$1,547,745
Mathematics (7)	\$177,586
Physics (33.5)	\$2,485,311
Political Science (1)	\$11,574
Psychology (1)	\$9,055
Romance Languages (1)	\$155,346
Sociology (1)	\$3,500
ZSR Library (1)	\$90,117
Total (106)	\$7,988,786

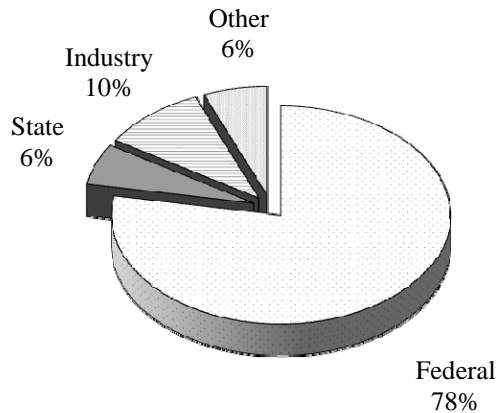
Research Grants by Fund Source, Bowman Gray Campus, 2005-2009

Fund Source	2004-05	2005-06	2006-07	2007-08	2008-09
Federal	\$152,276,049	\$149,369,704	\$160,194,656	\$157,400,703	\$147,657,390
State	\$9,911,486	\$10,043,559	\$6,788,215	\$20,527,393	\$11,601,807
Industry	\$16,801,781	\$18,933,453	\$13,657,574	\$13,884,373	\$18,941,536
Other	\$9,933,502	\$11,483,319	\$9,420,409	\$8,002,454	\$11,600,772
Total	\$188,922,818	\$189,830,035	\$190,060,854	\$199,814,923	\$189,801,505

Total Research Grants Received (x 1,000,000)



Research Grants 2008-09



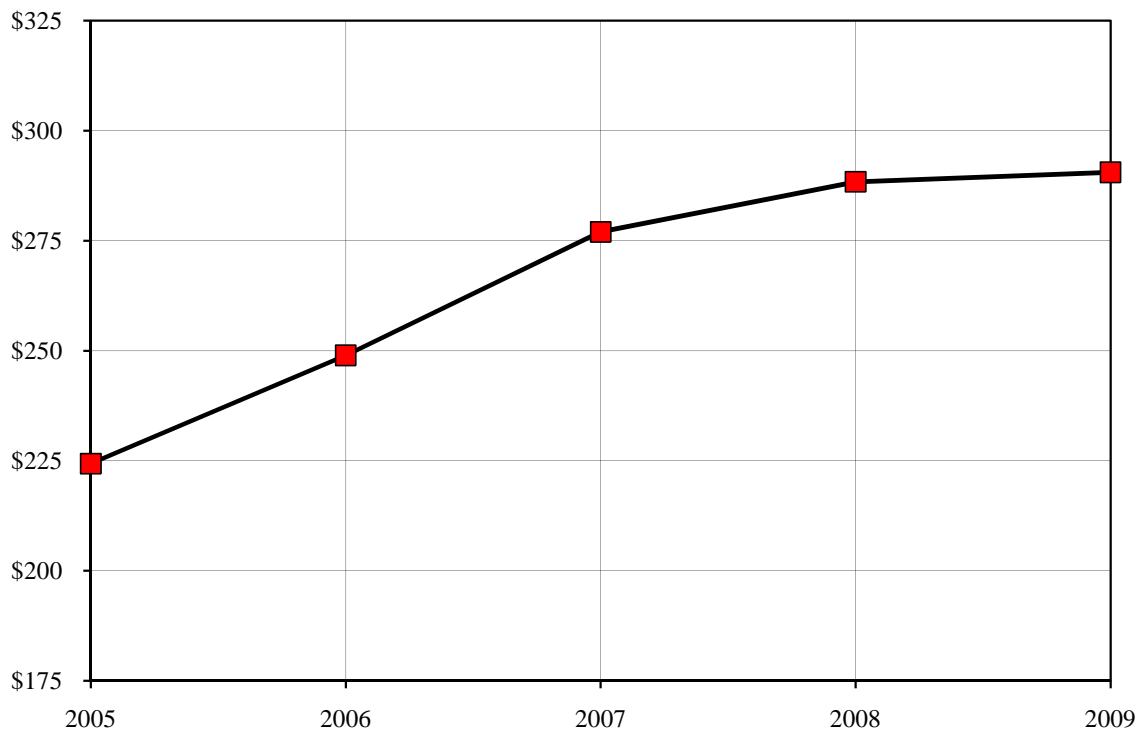
Research Grants by Discipline - FY 2009

Anesthesiology (12)	\$1,568,882
Biochemistry (30)	\$6,682,965
Cancer Biology (28)	\$5,901,144
Dermatology (28)	\$1,784,242
Family & Community Medicine (21)	\$2,960,289
Internal Medicine (322)	\$36,618,113
Medical Education (3)	\$68,860
Microbiology/Immunology (36)	\$6,353,486
Neurobiology & Anatomy (38)	\$6,895,445
Neurology (40)	\$2,250,172
Obstetrics & Gynecology (16)	\$2,266,255
Pathology (52)	\$13,326,965
Pediatrics (55)	\$10,839,353
Physiology/Pharmacology (71)	\$13,386,234
Psychiatry & Behavioral Medicine (5)	\$219,275
Public Health Services (106)	\$29,827,532
Radiation Oncology (17)	\$2,137,341
Radiological Sciences (25)	\$5,600,164
Regenerative Medicine (40)	\$26,288,697
Surgical Sciences (123)	\$10,295,816
Translational Science Institute (1)	\$101,200
Institutional (3)	\$4,429,074
Total (1072)	\$189,801,505

Sources of Revenue - Reynolda Campus, Fiscal Year 2009

Sources of Revenue	Amount	%
Net Student Tuition and Fees	\$145,525,000	50.1%
Sales and Services of Auxiliary Enterprises	\$81,435,000	28.0%
Private Gifts, Grants, and Contracts	\$37,152,000	12.8%
Dividends, Interest, and Rents	\$7,788,000	2.7%
Federal Grants and Contracts	\$6,749,000	2.3%
Other	\$8,244,000	2.8%
State Grants and Contracts	\$1,484,000	0.5%
Interest on Short-term Investments and Other Income	\$2,155,000	0.7%
Total	\$290,532,000	100%
<i>Net Realized and Unrealized Depreciation on Investments</i>	<i>(\$146,062,000)</i>	

Reynolda Campus Revenues (x \$1,000,000) 2005-2009

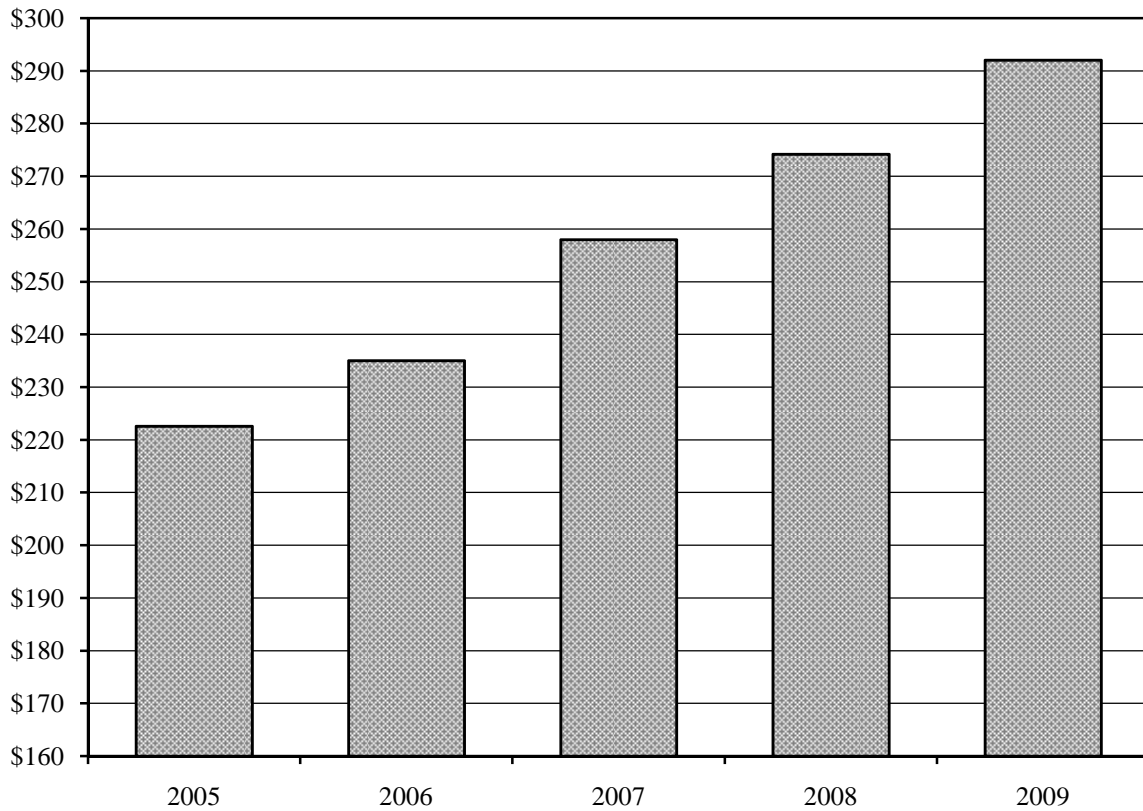


Note: Prior years restated to exclude net realized and unrealized appreciation on investments

Expenditures - Reynolda Campus, Fiscal Year 2009

Expenditures and Transfers	Amount	%
Instruction, Departmental Research, and Clinical	\$114,860,000	39.3%
Auxiliary Enterprises	\$76,447,000	26.2%
Institutional Support	\$55,435,000	19.0%
Libraries	\$12,071,000	4.1%
Student Services	\$15,660,000	5.4%
Academic Support	\$11,736,000	4.0%
Organized Activities	\$1,754,000	0.6%
Other	\$4,108,000	1.4%
Total	\$292,071,000	100%

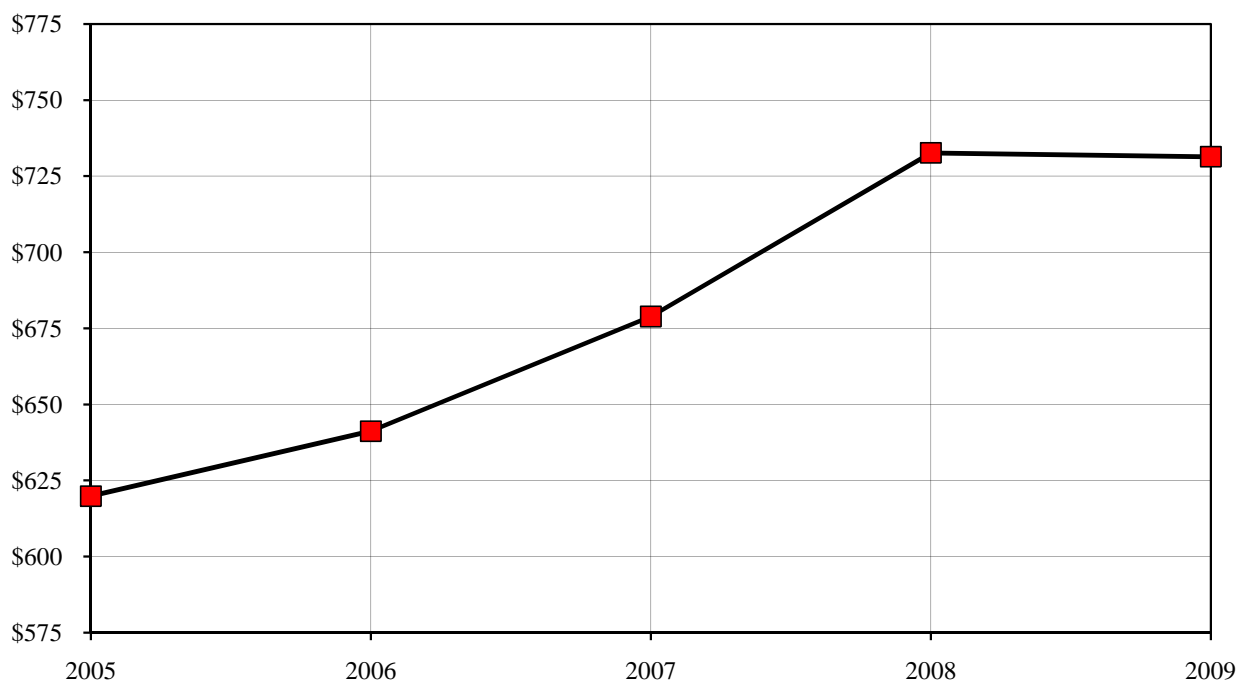
Reynolda Campus Expenditures (x \$1,000,000) 2005-2009



Sources of Revenue - Bowman Gray Campus, Fiscal Year 2009

Sources of Revenue	Amount	%
Clinical Services	\$390,304,000	53.4%
Federal Grants and Contracts	\$140,387,000	19.2%
Private Gifts, Grants, and Contracts	\$46,543,000	6.4%
Other	\$108,642,000	14.9%
Net Student Tuition and Fees	\$17,993,000	2.5%
Dividends, Interest, and Rents	\$6,809,000	0.9%
State Grants and Contracts	\$18,951,000	2.6%
Sales and Services of Auxiliary Enterprises	\$729,000	0.1%
Interest on Short-term Investments and Other Income	\$1,019,000	0.1%
Total	\$731,377,000	100%
<i>Net Realized and Unrealized Depreciation on Investments</i>	<i>(\$153,831,000)</i>	

Bowman Gray Campus Revenues (x \$1,000,000) 2005-2009

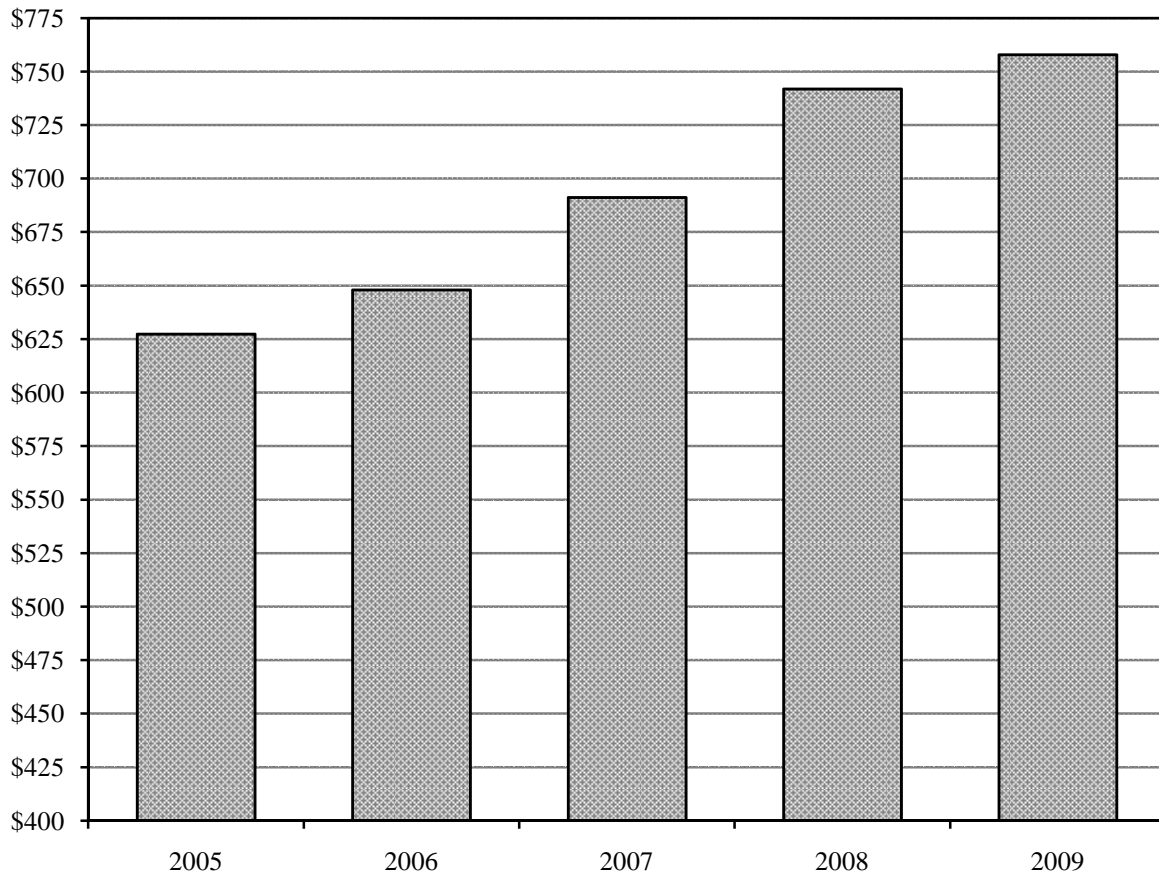


Note: Prior years restated to exclude net realized and unrealized appreciation on investments

Expenditures - Bowman Gray Campus, Fiscal Year 2009

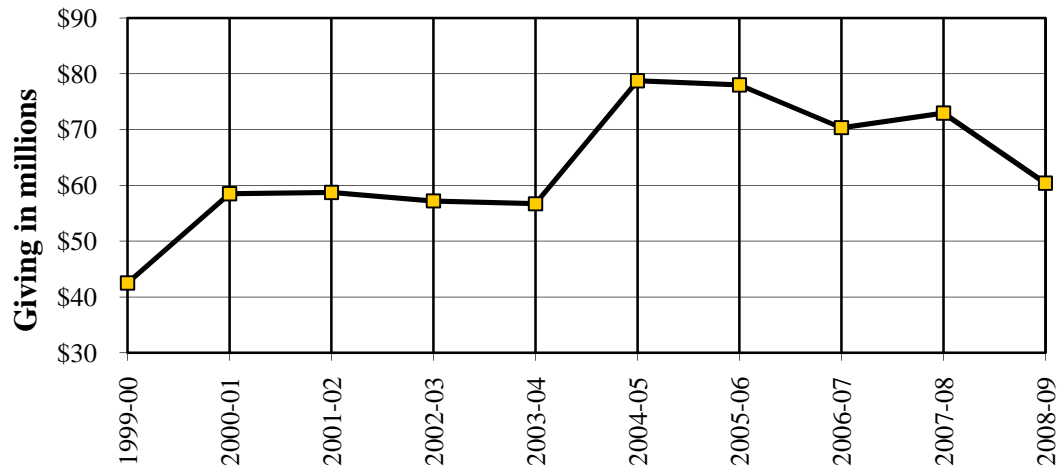
Expenditures and Transfers	Amount	%
Instruction, Departmental Research, and Clinical	\$503,451,000	66.4%
Sponsored Research, Training, and Other Programs	\$169,373,000	22.3%
Institutional Support	\$50,233,000	6.6%
Academic Support	\$8,817,000	1.2%
Libraries	\$4,642,000	0.6%
Auxiliary Enterprises	\$761,000	0.1%
Student Services	\$1,854,000	0.2%
Other	\$18,844,000	2.5%
Total	\$757,975,000	100%

Bowman Gray Campus Expenditures (x \$1,000,000) 2005-2009

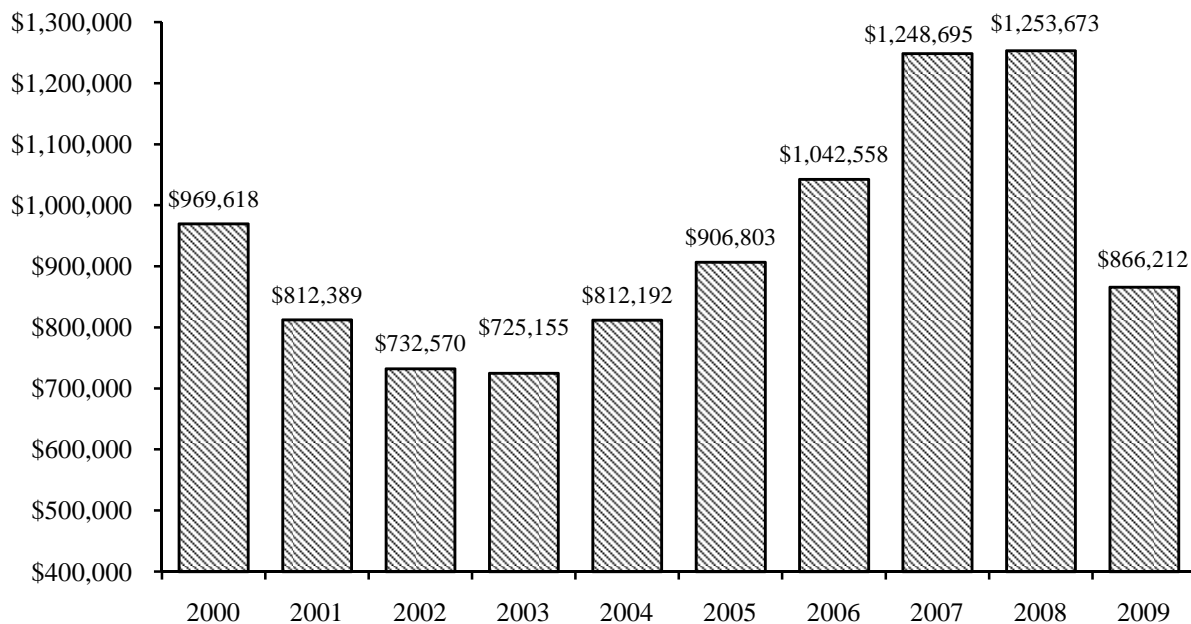


Summary of Total Giving to Wake Forest University, 2000-2009

Year	Reynolda Campus	Bowman Gray Campus	Total
1999-00	\$25,868,336	\$16,633,467	\$42,501,803
2000-01	\$40,170,743	\$18,317,274	\$58,488,017
2001-02	\$35,032,045	\$23,705,634	\$58,737,679
2002-03	\$33,615,108	\$23,596,556	\$57,211,664
2003-04	\$32,489,427	\$24,211,144	\$56,700,571
2004-05	\$58,197,864	\$20,556,740	\$78,754,604
2005-06	\$51,619,335	\$26,361,391	\$77,980,726
2006-07	\$45,969,694	\$24,368,674	\$70,338,368
2007-08	\$49,508,978	\$23,458,658	\$72,967,636
2008-09	\$37,600,026	\$22,812,911	\$60,412,937

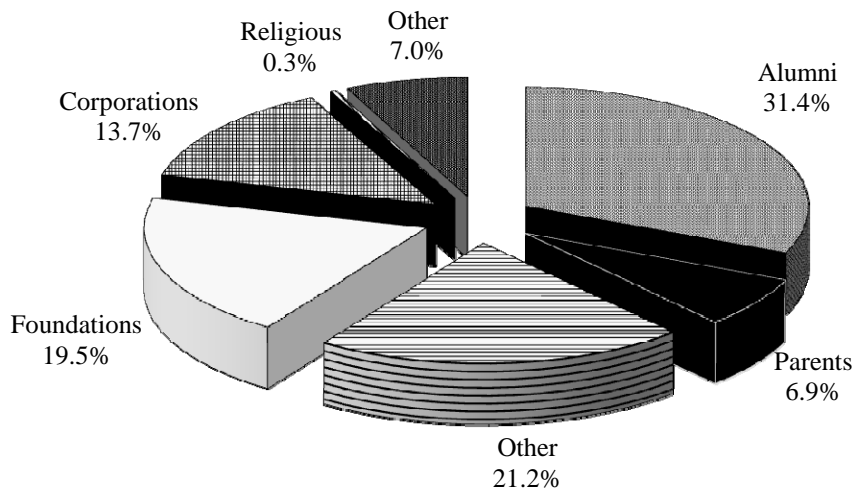


Market Value of Endowment Funds (x \$1000)



Charitable Contributions by Category

Fiscal Year 2008-09



	Fiscal Year 2008-09	% Total
Individuals		
Alumni	\$18,972,884	31.4%
Parents	\$4,140,396	6.9%
Other	\$12,822,813	21.2%
Organizations		
Foundations	\$11,792,745	19.5%
Corporations	\$8,286,722	13.7%
Religious	\$194,199	0.3%
Other	\$4,203,178	7.0%
Total	\$60,412,937	100%

Alumni Giving Percentage

