

# Fact Book

2005-2006

## Wake Forest University

*Office of Institutional Research*



# **Wake Forest University**

## **Fact Book 2005-2006**

**Fifteenth Edition – March 2006**

### **Reynolda Campus**

Wake Forest College, Wayne Calloway School of Business and Accountancy, School of Law, Graduate School, Babcock Graduate School of Management and Divinity School

### **Bowman Gray Campus**

Wake Forest University School of Medicine – includes Graduate School and Allied Health Programs

### **Office of Institutional Research**

**Ross A. Griffith**, Director

**Adam W. Shick**, Assistant Director

**Sara R. Gravitt**, Research Assistant

**Frank C. Fasinski**, Graduate Assistant

**P. O. Box 7373 Reynolda Station, Winston-Salem, NC 27109 (336) 758-5244**

Web site: **<http://www.wfu.edu/ir>**

## Table of Contents

### General Information

History .....	1
Mission Statement.....	1
Statement of Principle on Diversity.....	2
Chronological History.....	2
Accreditation.....	3
Board of Trustees.....	4
Administration (Executive Council).....	4
Presidents .....	4
Administrative Organizational Charts .....	5
Academic Programs .....	7
Information Systems .....	8
Libraries .....	9

### Students

Admissions, Fall 2005 .....	10
Admissions, First-time Freshmen and Transfer Students .....	11
High School Rank and SAT Scores for Entering Freshmen.....	12
Average GRE Scores, Graduate School .....	13
Fall Enrollment for the University, 1986-2005 .....	14
Fall Enrollment by School and by Class.....	15
Ethnic Enrollment .....	16
University Ethnic Enrollment .....	17
Undergraduate Greek Affiliation .....	18
Undergraduate Religious Preference .....	19
North Carolina Undergraduate Students by County of Residence .....	20
Undergraduate Geographic Distribution by Region .....	21
Undergraduate Geographic Distribution by Region and State of Residence.....	22
Undergraduates from the U.S. and Other Countries .....	23
Total Number of Degrees Granted, 1986-2005 .....	24
Number and Type of Degrees Granted, 2004 and 2005 .....	25
Number and Type of Degrees Granted by School, 2001-2005.....	26
Graduates by Double Majors, 2004-2005 .....	27
Graduates by Minor, 2004-2005 .....	28
Undergraduates and Senior Graduates Receiving Degree Credits Abroad .....	29
Undergraduates Receiving Academic Distinction.....	29
Undergraduate Graduation and Retention Rates .....	30
Placement of 2005 Graduating Class.....	31
Placement of Graduating Classes, 2001-2005 .....	32
Wake Forest Students Applying to Medical School.....	33
Wake Forest Students Applying to Law School.....	34

## **Faculty and Staff**

Teaching Faculty and Faculty by Rank and Gender .....	35
Full-time Faculty by Ethnicity .....	36
Teaching Equivalents and Student-to-Faculty Ratio .....	37
Percentage of Part-time Faculty .....	37
Tenure of Full-time Instructional Faculty – Reynolda Campus .....	38
Highest Degree Earned by Faculty – Reynolda Campus .....	38
Tenure of Full-time Instructional Faculty – School of Medicine .....	39
Highest Degree Earned by Faculty – School of Medicine .....	39
Average Faculty Salary by Rank – Reynolda Campus .....	40
Average Faculty Salaries – College and Calloway .....	40
Full-time Staff by Category, Gender, and Ethnicity .....	41

## **Facilities**

Main Facilities Reynolda Campus, and Gross Square Feet by Decade .....	42
Student Housing Utilization .....	43

## **Finances**

First-year Student Tuition and Undergraduate Financial Aid .....	44
Annual Tuition/Fees for "Most Competitive" Private Universities .....	45
Undergraduate Student Financial Aid Programs .....	46
Undergraduate Financial Aid by Source .....	47
Average Instructional Dollars Expended Per Undergraduate Student .....	47
Research Grants by Fund Source and by Discipline – Reynolda Campus .....	48
Research Grants by Fund Source and by Discipline – Bowman Gray Campus .....	49
Sources of Revenue – Reynolda Campus .....	50
Expenditures – Reynolda Campus .....	51
Sources of Revenue – Bowman Gray Campus .....	52
Expenditures – Bowman Gray Campus .....	53
Summary of Total Giving to Wake Forest .....	54
Market Value of Endowment .....	54
Charitable Contributions by Category .....	55
Alumni Giving Percentage .....	55

# General Information



## **History of Wake Forest University**

On February 3, 1834, the school was founded as Wake Forest Institute. Located in the town of Wake Forest, North Carolina, the school was rechartered as Wake Forest College in 1838. In 1894 the School of Law was established. The School of Medicine, founded in 1902, offered a two-year medical program until 1941. In that year, the school moved from the town of Wake Forest to Winston-Salem, became associated with the North Carolina Baptist Hospital, and was named the Bowman Gray School of Medicine. This facility is located approximately four miles from the main campus. In 1942, Wake Forest admitted women as regular undergraduate students.

In 1946 the Trustees of Wake Forest College and the Baptist State Convention of North Carolina accepted a proposal by the Z. Smith Reynolds Foundation to relocate the College to Winston-Salem. The late Charles H. Babcock and his wife, the late Mary Reynolds Babcock, contributed a campus site, and building funds were received from the Z. Smith Reynolds Foundation and other sources. In 1956 the College moved all operations. The old Wake Forest campus is now home to the Southeastern Baptist Theological Seminary.

A School of Business Administration was established in 1948. In 1969, the School was named the Charles H. Babcock School of Business Administration and admitted the first graduate students in 1971. In 1972, the school enrolled only graduate students and the name was changed to the Charles H. Babcock Graduate School of Management. At that time, a Department of Business and Accountancy and a Department of Economics were established within the College. In 1980, the Department of Business and Accountancy was reconstituted as the School of Business and Accountancy; and, the name was changed to the Wayne Calloway School of Business and Accountancy in 1995.

In February 1996, the trustees approved the opening of a Divinity School. A full-time dean was hired in July 1996 with the first class enrolling in fall 1999. In October 1997, the Bowman Gray School of Medicine was renamed the Wake Forest University School of Medicine, while its campus is now known as the Bowman Gray Campus.

## **The Mission and Purpose of Wake Forest University**

(As approved by the Board of Trustees – March 22, 2002)

Wake Forest is a university dedicated to the pursuit of excellence in the liberal arts and in graduate and professional education. Its distinctiveness in its pursuit of its mission derives from its private, co-educational, and residential character; its size and location; and its Baptist heritage. Each of these factors constitutes a significant aspect of the unique character of the institution.

The University is now comprised of seven constituent parts: two undergraduate institutions, Wake Forest College and the School of Business and Accountancy; the Graduate School; and four professional schools: the School of Law, the School of Medicine, the Babcock Graduate School of Management and the School of Divinity. It seeks to honor the ideals of liberal learning, which entail commitment to transmission of cultural heritages; teaching the modes of learning in the basic disciplines of human knowledge; developing critical appreciation of moral, aesthetic and religious values; advancing the frontiers of knowledge through in-depth study and research; and applying and utilizing knowledge in the service of humanity.

Wake Forest has been dedicated to the liberal arts for over a century and a half; this means education in the fundamental fields of human knowledge and achievement, as distinguished from education that is technical or narrowly vocational. It seeks to encourage habits of mind that ask "why," that evaluate evidence, that are open to new ideas, that attempt to understand and appreciate the perspectives of others, that accept complexity and grapple with it, that admit error, and that pursue truth. Wake Forest College has by far the largest student body in the University, and its function is central to the University's larger life. The College and the Graduate School are most singularly focused on learning for its own sake; they, therefore, serve as exemplars of specific academic values in the life of the university.

Beginning as early as 1894, Wake Forest accepted an obligation to provide professional training in a number of fields, as a complement to its primary mission of liberal arts education. This responsibility is fulfilled in the conviction that the humane values embodied in the liberal arts are also centrally relevant to the professions. Professional education at Wake Forest is characterized by a commitment to ethical and other professional ideals that transcend technical skills. Like the Graduate School, the professional schools are dedicated to the advancement of learning in their fields. In addition, they are specifically committed to the application of knowledge to solving concrete problems of human beings. They are strengthened by values and goals which they share with the College and Graduate School, and the professional schools enhance the work of these schools and the University as a whole by serving as models of service to humanity.

Wake Forest was founded by private initiative, and ultimate decision-making authority lies in a privately appointed Board of Trustees rather than in a public body. Funded to a large extent from private sources of support, it is determined to chart its own course in the pursuit of its goals. As a co-educational institution, it seeks to "educate together" persons of

both sexes and from a wide range of backgrounds --- racial, ethnic, religious, geographical, socioeconomic, and cultural. Its residential features are conducive to learning and the pursuit of a wide range of co-curricular activities. It has made a conscious choice to remain small in overall size; it takes pride in being able to function as a community rather than a conglomerate. Its location in the Piedmont area of North Carolina engenders an ethos that is distinctively Southern, and more specifically North Carolinian. As it seeks further to broaden its constituency and to receive national recognition, it is also finding ways to maintain the ethos associated with its regional roots.

Wake Forest is proud of its Baptist and Christian heritage. For more than a century and a half, it has provided the University an indispensable basis for its mission and purpose, enabling Wake Forest to educate thousands of ministers and laypeople for enlightened leadership in their churches and communities. Far from being exclusive and parochial, this religious tradition gives the University roots that ensure its lasting identity and branches that provide a supportive environment for a wide variety of faiths. The Baptist insistence on both separation of church and state and local autonomy has helped to protect the University from interference and domination by outside interests, whether these be commercial, governmental, or ecclesiastical. The Baptist stress upon an uncoerced conscience in matters of religious belief has been translated into a concern for academic freedom. The Baptist emphasis upon revealed truth enables a strong religious critique of human reason, even as the claims of revelation are put under the scrutiny of reason. The character of intellectual life at Wake Forest encourages open and frank dialogue and provides assurance that the University will be ecumenical and not provincial in scope, and that it must encompass perspectives other than the Christian. Wake Forest thus seeks to maintain and invigorate what is noblest in its religious heritage.

## **Statement of Principle on Diversity**

Wake Forest University is a community of men and women that seeks the enlightenment and freedom which come through diligent study and learning. Its higher goal, however, is to give life to the University motto "Pro Humanitate," as members translate a passion for knowledge into compassionate service.

The community shares a tradition that embraces freedom and integrity and acknowledges the worth of the individual. The heritage, established by the school's founders and nurtured by succeeding generations, promotes a democratic spirit arising from open-mindedness and discourse.

Wake Forest fosters compassion and caring for others. Its collective strength and character are derived from the values and distinctive experiences of each individual; therefore, it affirms the richness of human intellect and culture and its contribution to knowledge, faith, reason, and dialogue. Furthermore, it strives toward a society in which good will, respect, and equality prevail. To that end, Wake Forest University rejects hatred and bigotry in any form and promotes justice, honor, and mutual trust.

## **Chronological History of Wake Forest University**

- 1834 Founded in the town of Wake Forest, N.C., as Wake Forest Manual Labor Institute in cooperation with the N.C. Baptist Convention
- 1838 Named Wake Forest College
- 1894 School of Law established
- 1902 School of Medicine founded
- 1921 First Summer Session
- 1936 Approval of the School of Law by the American Bar Association
- 1941 Relocation of the School of Medicine to Winston-Salem and eventual change of name to Bowman Gray School of Medicine and association with the North Carolina Baptist Hospital
- 1942 Women admitted as undergraduate students
- 1948 School of Business Administration established
- 1956 Move to Winston-Salem in response to an endowment from the Z. Smith Reynolds Foundation
- 1961 Division of Graduate Studies established
- 1967 Became Wake Forest University
- 1969 School of Business Administration renamed Charles H. Babcock School of Business Administration
- 1972 Charles H. Babcock Graduate School of Management enrolled first graduate students. Department of Business and Accountancy and a Department of Economics established in the College.
- 1980 Department of Business and Accountancy renamed School of Business and Accountancy

- 1986 Redefined the relationship with the N.C. Baptist State Convention
- 1995 School of Business and Accountancy changed name to Wayne Calloway School of Business and Accountancy
- 1997 Change of name to Wake Forest University School of Medicine
- 1999 Opening of the Wake Forest University Divinity School
- 2002 Incorporation of Wake Forest University Health Sciences

## **Accreditation**

### **Wake Forest University is a Member of or Accredited by:**

AACSB International – The Association to Advance Collegiate Schools of Business  
 American Association of Nurse Anesthetists  
 American Chemical Society  
 American Council on Education  
 Accreditation Review Commission on Education for the Physician Assistant of the American Medical Association  
 Association of American Colleges  
 Association of American Law Schools  
 Association of American Medical Colleges  
 Association of Theological Schools – Associate Membership  
 Board of Law Examiners  
 Commission on Colleges of the Southern Association of Colleges and Schools  
 Council for Accreditation of Counseling and Related Educational Programs  
 Council on Certification of Nurse Anesthesia Educational Programs  
 Council of Graduate Schools  
 Council of Southern Graduate Schools  
 Council of the North Carolina State Bar  
 Council of the Section of Legal Education and Admissions to the Bar of the American Bar Association  
 European Foundation for Management Development  
 Liaison Committee on Medical Education of the American Medical Association and the Association of American Medical Colleges  
 National Accrediting Agency for Clinical Laboratory Sciences  
 National Association of Independent Colleges and Universities  
 National Council for the Accreditation of Teacher Education  
 North Carolina Association of Colleges and Universities  
 North Carolina Independent Colleges and Universities  
 North Carolina Conference of Graduate Schools  
 North Carolina Department of Public Instruction  
 Oak Ridge Associated Universities  
 Section on Medical Schools of the American Medical Association  
 Southern Universities Conference



## 2005-2006 University Board of Trustees

Diana M. Adams	Jerry H. Baker	Donna A. Boswell	Bobby R. Burchfield
Jocelyn Burton	J. Donald Cowan, Jr.	Ronald E. Deal	Graham W. Denton, Jr.
David W. Dupree	A. Doyle Early, Jr.	Lisbeth C. Evans	Lelia B. Farr
Donald E. Flow	Martin L. Garcia	Marvin D. Gentry	Murray C. Greason, Jr.
William B. Greene, Jr.	Robert E. Greene	James R. Helvey, III	James M. Hoak
Alice Kirby Horton	Albert R. Hunt	Jeanette Wallace Hyde	James W. Judson, Jr.
Deborah D. Lambert	Dee Hughes LeRoy	Douglas F. Manchester	William L. Marks
Theodore R. Meredith	Kenneth D. Miller	Barbara B. Millhouse	L. Glenn Orr, Jr.
Celeste Mason Pittman	Michael G. Queen	Alexandria J. Reyes	Deborah K. Rubin
Andrew J. Schindler	Mitesh B. Shah	Adelaide A. Sink	Lloyd P. Tate, Jr.
J. Lanny Wadkins, Jr.	James T. Williams, Jr.	Charles Jeffrey Young	Kyle A. Young

## Life Trustees

James L. Becton	Bert L. Bennett	Louise Broyhill	C. C. Cameron
Charles W. Cheek	Egbert L. Davis, Jr.	Floyd Fletcher (Deceased)	Victor I. Flow, Jr.
Jean H. Gaskin	Weston P. Hatfield	Harvey R. Holding	James E. Johnson, Jr.
Petro Kulynych	John G. Medlin, Jr.	Russell W. Meyer, Jr.	Arnold D. Palmer
Frances P. Pugh	Zachary Smith	D. E. Ward, Jr.	Lonnie B. Williams
J. Tylee Wilson	T. Eugene Worrell		

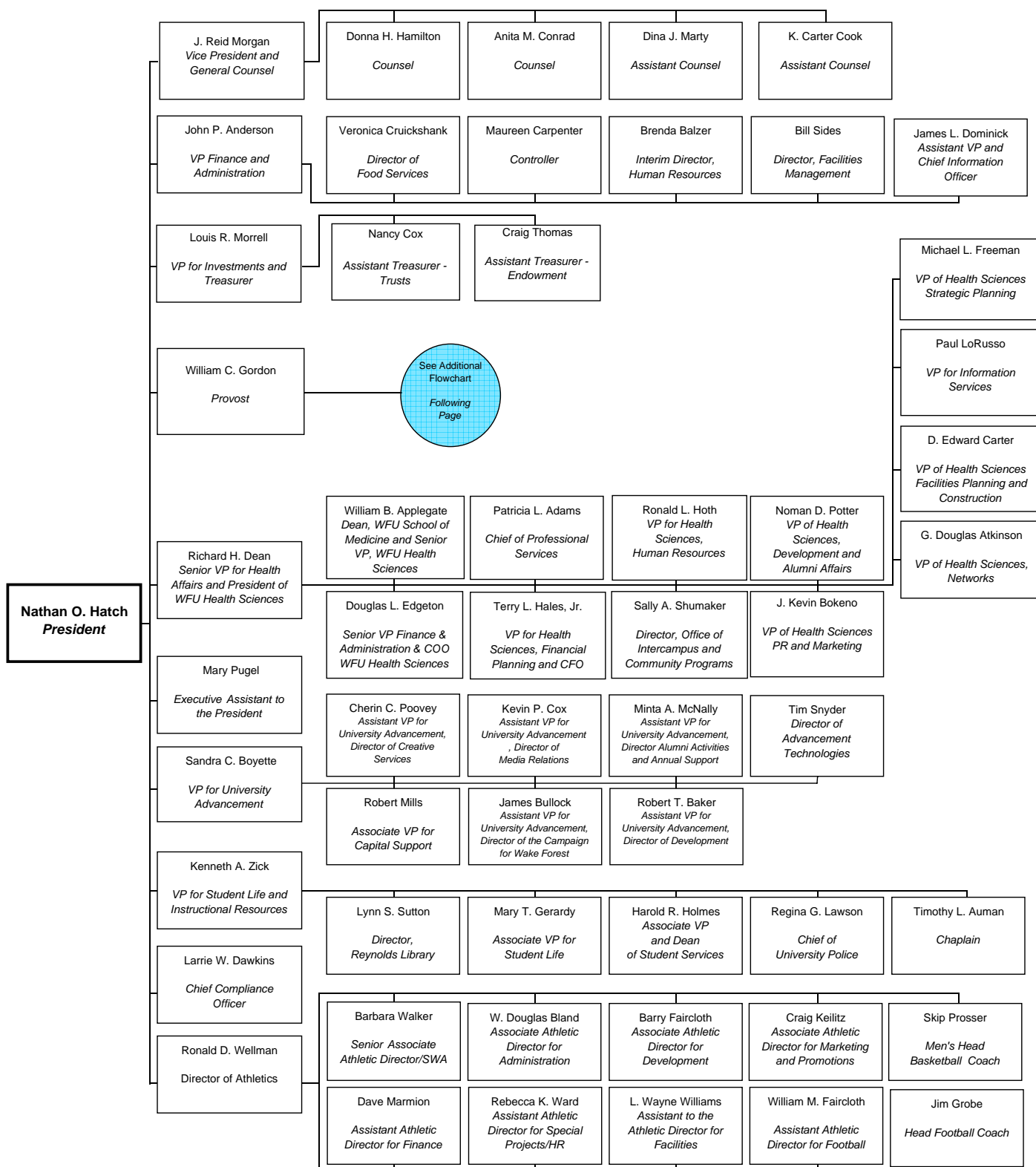
## Administration – Executive Council

Nathan O. Hatch	President
Richard H. Dean	Senior Vice President for WFU Health Affairs and President, WFU Health Sciences
William C. Gordon	Provost
John P. Anderson	Vice President for Finance and Administration
William B. Applegate	Dean, WFU School of Medicine and Senior Vice President, WFU Health Sciences
Sandra C. Boyette	Vice President for University Advancement
Douglas L. Edgeton	Senior Vice President Finance and Administration, WFU Health Sciences, COO
J. Reid Morgan	Vice President and General Counsel
Louis R. Morrell	Vice President for Investments and Treasurer
Ronald D. Wellman	Director of Athletics
Kenneth A. Zick	Vice President for Student Life and Instructional Resources
Deborah L. Best	Dean of the College
Toby A. Hale	Associate Dean of the College, Dean of the Summer School
Bill J. Leonard	Dean of the Divinity School
Gordon A. Melson	Dean of the Graduate School
Ajay Patel	Dean, Babcock Graduate School of Management
Robert K. Walsh	Dean of the Law School
Jack E. Wilkerson, Jr.	Dean of the Calloway School of Business and Accountancy
Samuel T. Gladding	Associate Provost
Mark E. Welker	Associate Provost for Research
Lynn S. Sutton	Director, Z. Smith Reynolds Library
Harold R. Holmes	Associate Vice President and Dean of Student Services
Mary E. Pugel	Senior Executive Assistant to the President

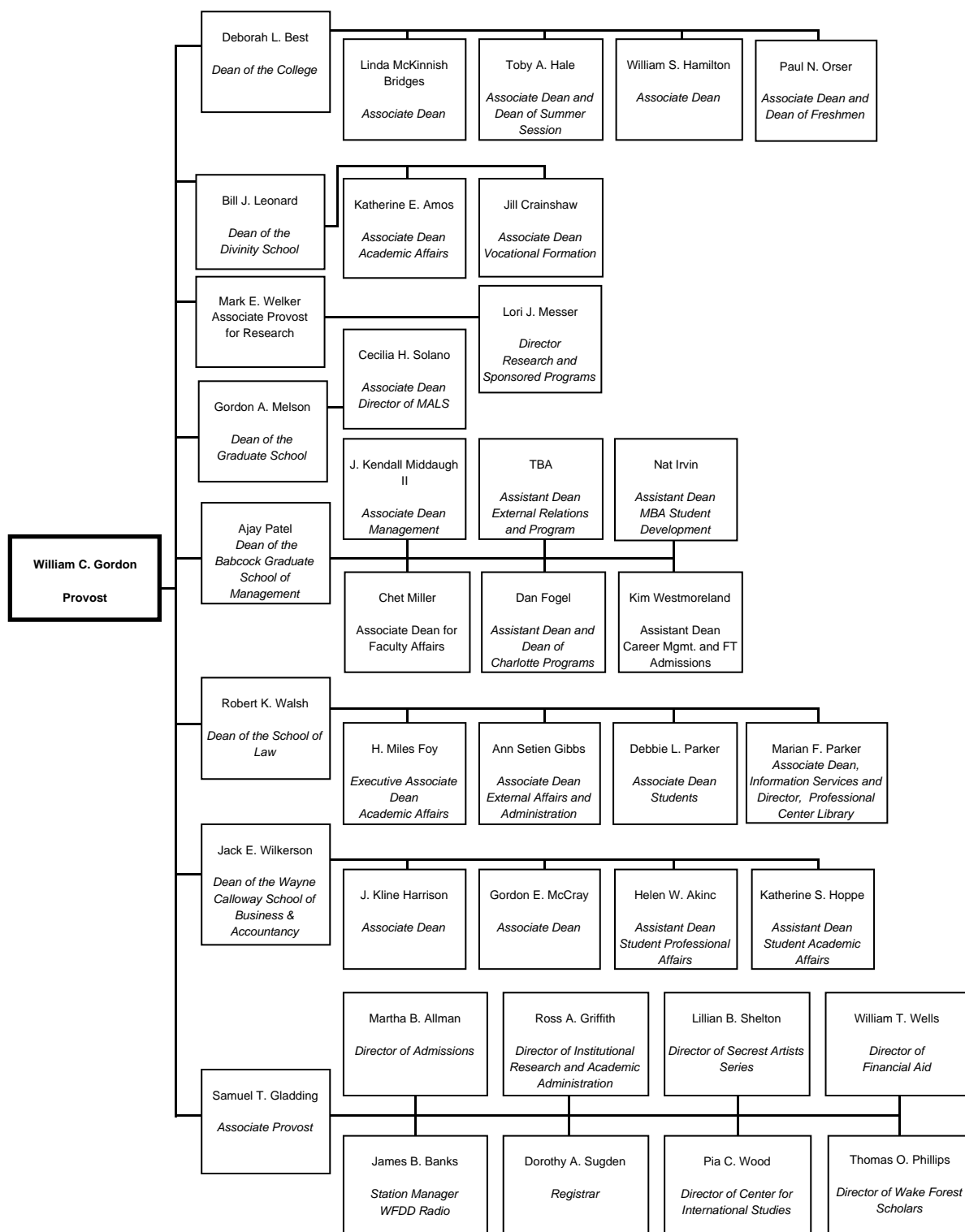
## Presidents of Wake Forest University

1834	Samuel Wait	1884	Charles Elisha Taylor	1967	James Ralph Scales
1845	William Hooper	1905	William Louis Poteat	1983	Thomas K. Hearn, Jr.
1849	John Brown White	1927	Francis Pendleton Gaines	2005	Nathan O. Hatch
1854	Washington Manly Wingate	1930	Thurman D. Kitchin		
1879	Thomas Henderson Pritchard	1950	Harold Wayland Tribble		

# ADMINISTRATIVE ORGANIZATIONAL CHART



# ADMINISTRATIVE ORGANIZATIONAL CHART



## Degrees Offered by Academic Program

Academic Program	Degree Offered	Academic Program	Degree Offered
<b>Allied Health</b>		<b>Health Sciences</b>	
Medical Technology	C, BS (combined degree)	Combined MD/PhD*	MD/PhD
Nurse Anesthesia	C, MSN (combined degree)	Health and Exercise Science	BS, MS
Physician Assistant	MMS	Medicine	MD, MD/MBA, MD/MS
<b>Bio-Medical Sciences</b>		<b>Law</b>	
Biochemistry and		Combined JD/MBA	JD/MBA
Molecular Biology	PhD	Law	JD, LLM
Biomedical Engineering	MS, PhD		
Cancer Biology	PhD	<b>Letters</b>	
Health Sciences Research	MS	Classical Studies	BA
Comparative Medicine	MS	English	BA, MA
Microbiology and Immunology	PhD		
Molecular and Cellular		<b>Liberal Studies</b>	
Pathobiology	PhD	Liberal Studies	MALS
Molecular Genetics	PhD		
Molecular Medicine	MS, PhD	<b>Life Sciences</b>	
Neurobiology and Anatomy	PhD	Biology	BA, BS, MS, PhD
Neuroscience	PhD		
Physiology and Pharmacology	PhD	<b>Mathematics</b>	
<b>Business and Management</b>		Mathematics	BA, BS, MA
Accountancy	BS, MSA	Mathematical Business	BS
Finance	BS	Mathematical Economics	BS
Business	BS		
Business Administration		<b>Philosophy</b>	
and Management	MBA	Philosophy	BA
Combined JD/MBA	JD/MBA		
Combined MD/MBA	MD/MBA	<b>Physical Sciences</b>	
Combined MSA/MBA	MSA/MBA	Chemistry	BA, BS, MS, PhD
Combined PhD*/MBA	PhD/MBA	Physics	BA, BS, MS, PhD
Information Systems	BS		
<b>Communication</b>		<b>Psychology</b>	
Communication	BA, MA	Psychology	BA, MA
<b>Counseling</b>		<b>Religion</b>	
Counseling	MA	Religion	BA, MA
<b>Computer and Information Sciences</b>		<b>Renewable Natural Resources</b>	
Computer Science	BS, MS	Forestry and	
		Environmental Studies	BS (combined degree)
<b>Education</b>		<b>Social Sciences and History</b>	
Education	BA	Anthropology	BA
Teaching	MAEd	Economics	BA
		History	BA
<b>Engineering</b>		Political Science	BA
Engineering	BS (combined degree)	Sociology	BA
<b>Foreign Languages</b>		<b>Theology</b>	
Chinese	BA	Divinity	M. Div.
Japanese	BA		
French	BA	<b>Visual and Performing Arts</b>	
German	BA	Art History	BA
Greek	BA	Studio Art	BA
Latin	BA	Music History/Theory/Composition	BA
Russian	BA	Music Performance	BA
Spanish	BA	Theatre	BA

\*PhD of combined degrees can be obtained in any discipline offering PhD

## Information Systems (Reynolda Campus)

Information Systems supports University instruction, research, and administrative needs through computing and telecommunications services. The campus computer network offers wired and wireless high-speed connectivity from all campus buildings.

All students on the Reynolda Campus are given a network login ID; the login is maintained as long as the student is enrolled. This account provides students with access to networked computer resources such as electronic mail, client-server software packages, various courseware applications, and administrative services. Upon matriculation, and again at the beginning of the junior year, undergraduate students receive a new ThinkPad computer as part of their tuition. The current ThinkPad model specifications can be found on the Information Systems Web site. Standard software on the ThinkPad includes Windows XP Professional Edition, Microsoft Office Professional, and Mozilla, Internet Explorer and Macromedia Dreamweaver, among other Internet applications. The ThinkPad also has a variety of research, analytical, and development tools, as well as the latest versions of Symantec Antivirus and Spybot Search and Destroy programs. Maintenance and support for the ThinkPad computers is provided on campus through an award-winning service center. Loaner computers are available for students as needed. In addition to the ThinkPad, all first-year students receive an HP color inkjet printer/scanner/copier.

The department also supports an extensive information system that includes documentation, class schedules and grades, University-wide activity calendars, the Wake Forest University Libraries information system, and the new student-run Web site, <http://student.wfu.edu>. The Wake Forest Information Network (WIN) provides faculty, staff, and students with a growing list of services, including online directories, course registration services, electronic voting, vehicle registration, and an alumni career networking service.

The University has an extensive collection of computing facilities that serve both academic and administrative needs. Extensive LINUX and Windows-based servers provide for business computing needs and services. A mix of LINUX and AIX systems and Windows-based systems provide for messaging, systems management, Internet, intranet, courseware, various research needs, and file and print services. A 130-node LINUX supercomputing cluster provides supercomputing services for math, computer science, physics, and other scientific research applications. These systems are available to students, faculty, and staff 24 hours a day through the WFU network or ISP connectivity. All connections are protected by VPN and firewalls.

Programming languages available on the Academic Computing (AC) system include C, C++, Java, Perl, Tcl/Tk, Pascal, Cobol, Fortran77, and Fortran95. Statistical packages such as SPSS and SAS can be used for data analysis, forecasting, and financial modeling. Maple, a symbolic algebra package, is also available. Using the ThinkPads, students have access to a large variety of instructional, classroom, and research resources through the campus network including the online catalog, databases, and electronic journals provided by the Z. Smith Reynolds Library. Many departments on campus have their own computing resources in addition to those available through the Information Systems Department.

Wake Forest students, faculty, and staff also have access to computing resources outside the University. The University is a member of the Inter-University Consortium for Political and Social Research (ICPSR), located at the University of Michigan. Membership in ICPSR provides faculty and students with access to a large library of data files, including public opinion surveys, cross-cultural data, financial data, and complete census data. The University is also a member of EDUCAUSE, a national consortium of colleges and universities concerned with computing issues.

Wake Forest's network infrastructure includes a gigabit Ethernet backbone, 100 megabit switched connectivity to the desktop, and pervasive, 802.11a/g wireless connectivity in all campus buildings. Wake Forest has a gigabit Ethernet connection to the Winston-Salem RPOP (regional point of presence) for Internet access. This RPOP connects the University to the North Carolina Research and Education Network (NCREN), the Internet service provider for the majority of North Carolina colleges and universities. Through this connection, Wake Forest has access to additional extensive supercomputing facilities located throughout the state of North Carolina as well as access to all the premiere research networks in the world, including Internet II, Abilene, and the VBNS (Very high performance Backbone Network Service). Wake Forest works closely with NCREN on other advanced network and Internet technologies.

Information Systems also provides telephone and cable television services to the students, faculty, and staff of Wake Forest. All telephone users receive voice mail. The cable TV system is provided through an agreement with Time Warner Cable and offers more than 70 channels on the campus cable TV system, including HBO, high-definition programming, and several satellite-fed stations. Cable channel 2 is the Wake Forest University information channel, providing updated technology information, current weather conditions, and a calendar of campus events. Channel 6, the WAKE-TV channel, provides a forum for student talk shows and other student-oriented programming. Channels 20 and 22 carry SCOLA, a non-profit educational service that features television programming from more than fifty different countries in their original languages.

Information Systems provides assistance by telephone, e-mail, and online through ResolveIT. Students, faculty, and staff can receive assistance in person at the Help Desk from 8 a.m. - 9 p.m., Monday through Thursday; 8 a.m. - 5 p.m.

on Friday; and 5-9 p.m. on Sunday. A voice mail retrieval system is activated on Saturdays to respond to emergency calls. On-site computing support is available in residence halls through Resident Technology Advisors (RTAs).

More than 160 students are involved in Information Systems student technology programs. Students work in a number of settings that include providing direct support for students, faculty, and staff; providing technology training in the community; and delivering technology management and consulting services for external clients. In addition, students participate in unique leadership and community outreach programs including technology-focused residence halls, a student technology council, and community network implementation.

## **Libraries**

The libraries of Wake Forest University support instruction and research at the undergraduate level and in the disciplines awarding graduate degrees. The libraries of the University hold membership in the Association of College and Research Libraries, and in the Association of Southeastern Research Libraries. They rank among the top libraries in the Southeast in expenditures per student.

The Wake Forest University libraries include the Z. Smith Reynolds Library, the Professional Center Library (serving the Law School and the Babcock Graduate School of Management), and the Coy C. Carpenter Library of the Wake Forest University School of Medicine.

The three libraries maintain collections totaling over 1.7 million print volumes and subscriptions to more than 30,000 periodicals and serials, largely of scholarly content, in print or digital formats. The Z. Smith Reynolds Library holds over 1.4 million volumes in the general collection, over 1 million reels of microfilm and pieces of microtext, and over 10,000 videos and DVD's. As a congressionally designated selective federal depository and depository of North Carolina government information, the ZSR Library holds nearly 170,000 government documents. The Professional Center Library holds over 200,000 volumes and the Coy C. Carpenter Library holds over 156,000 volumes. The three libraries share an online catalog that also provides access to electronic resources, databases, and an ever-expanding collection of electronic journals, all accessible via the campus network and remotely.

The Z. Smith Reynolds Library provides comprehensive reference and research services, including assistance with online searching, directed and independent research as well as discipline-related library instruction, information literacy classes, and general library orientation. Reference tools are available in electronic and print formats. Library staff offer undergraduates a one-credit course, LIB100: Accessing Information in the 21<sup>st</sup> Century, which focuses on effective use of research strategies, search techniques, and evaluation of resources. Wake Forest students, faculty and staff may use interlibrary loan services to borrow materials from other libraries throughout the country at no charge. Special collections in the Z. Smith Reynolds Library include the Rare Books Collection, which emphasizes American and British authors of the late nineteenth and early twentieth centuries. The Ethel Taylor Crittenden Baptist Historical Collection and the Wake Forest College/University Archive are maintained here as well.

Facilities in the Z. Smith Reynolds Library include the Information Technology Center which is equipped with collaborative technology work stations and multimedia viewing, editing and scanning equipment. A computer lab for student use is also located in the ITC. Training in computer and multimedia technologies is provided through the ITC. Several small group study rooms are located throughout the library and may be reserved. Two 24-hour study areas and a cyber café are accessible by key-card. The entire library is equipped for wireless internet access.

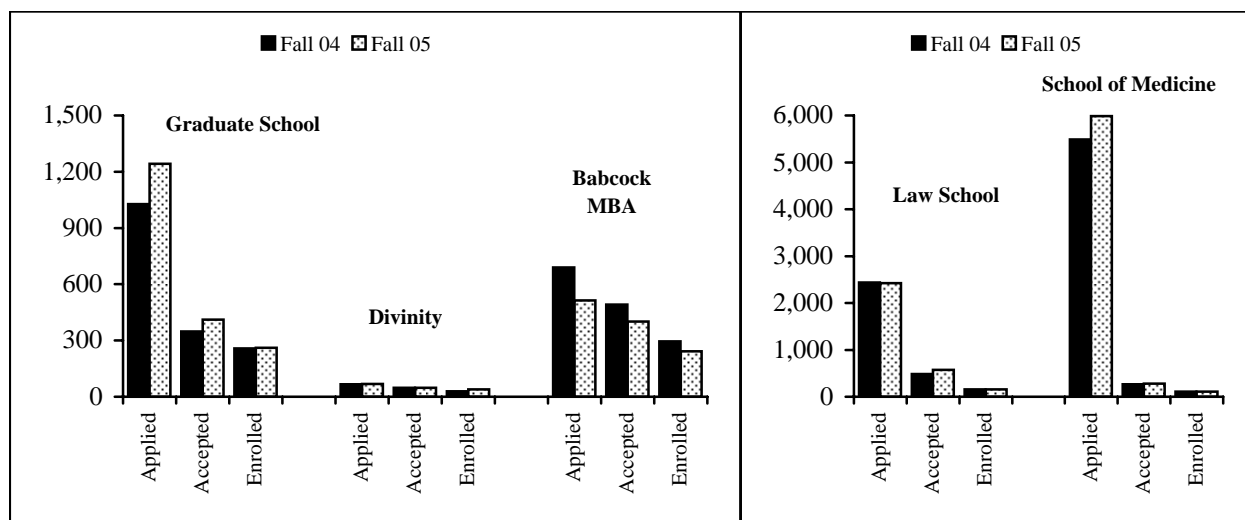
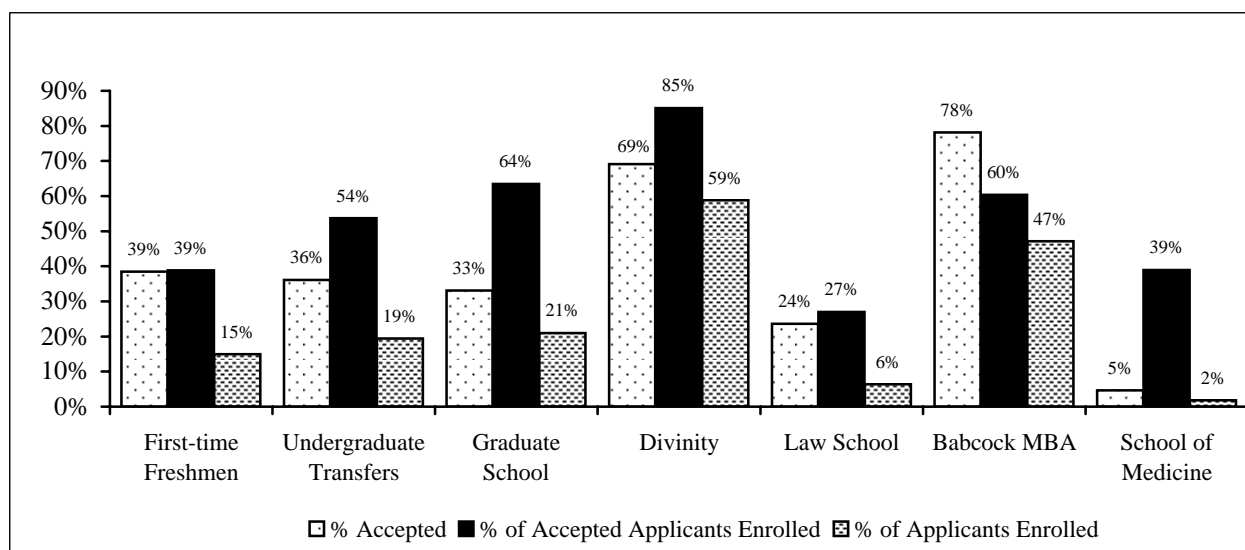
The Coy C. Carpenter Library of the Wake Forest University School of Medicine houses special collections including the written and oral history of the School of Medicine, the history of neurology, and the Suzanne Meads Art in Medicine collection. The Dorothy Carpenter Medical Archives also contain the papers of the American Neurological Association, the American Society of Neuroimaging, the Association of Medical Illustrators, the Society of Neurological Surgeons, the Association for Research in Nervous and Mental Disease, the North Carolina Surgical Association, and the North Carolina Baptist Hospital Nursing School.

# Students



## Admissions, Fall 2005

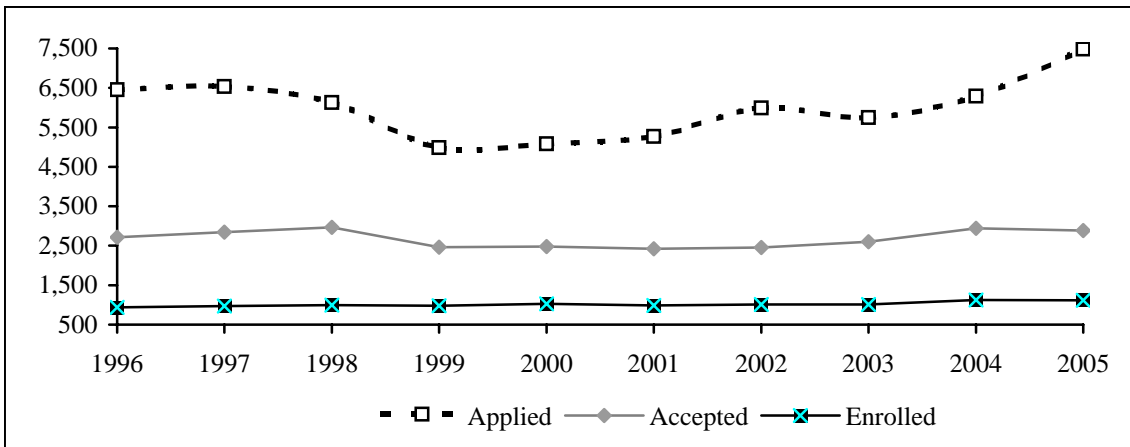
	Number of Applicants				Number Accepted				Number Enrolled			
	Male	Female	NC	OS	Male	Female	NC	OS	Male	Female	NC	OS
Freshmen	7,484		7,484		2,882		2,882		1,120		1,120	
	3,550	3,934	1,425	6,059	1,400	1,482	764	2,118	553	567	299	821
Und. Transfers	263		263		95		95		51		51	
	126	137	65	198	41	54	23	72	23	28	16	35
Grad. School	1,243		1,243		411		411		261		261	
	500	743	408	835	169	242	184	227	107	154	143	118
Divinity	68		68		47		47		40		40	
	35	33	34	34	22	25	18	29	19	21	17	23
Law School	2,422		2,422		571		571		154		154	
	1,388	1,034	565	1,857	322	249	91	480	84	70	54	100
Babcock MBA	513		513		401		401		242		242	
	379	134	247	266	297	104	208	193	177	65	163	79
School of Med.	5,983		5,983		280		280		109		109	
	3,200	2,783	623	5,360	151	129	78	202	64	45	41	68





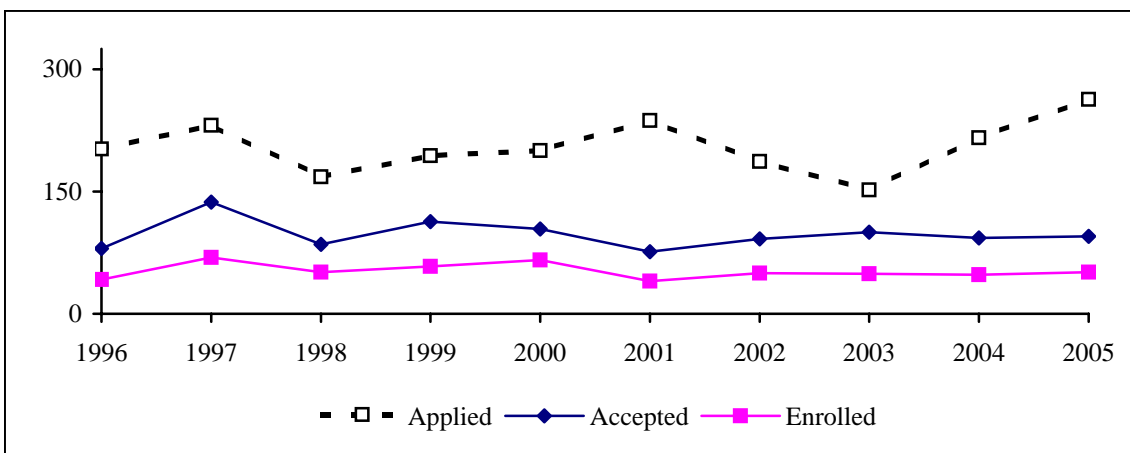
### Admissions, First-time Freshmen, Fall 1996-2005

Year	Applied	Accepted	Enrolled
1996	6,450	2,715	940
1997	6,536	2,848	967
1998	6,132	2,962	993
1999	4,982	2,465	979
2000	5,079	2,480	1,025
2001	5,271	2,421	989
2002	5,995	2,454	1,007
2003	5,752	2,599	1,007
2004	6,289	2,945	1,121
2005	7,484	2,882	1,120



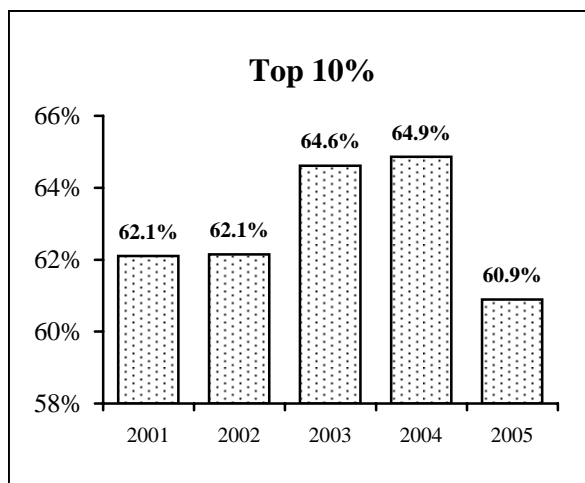
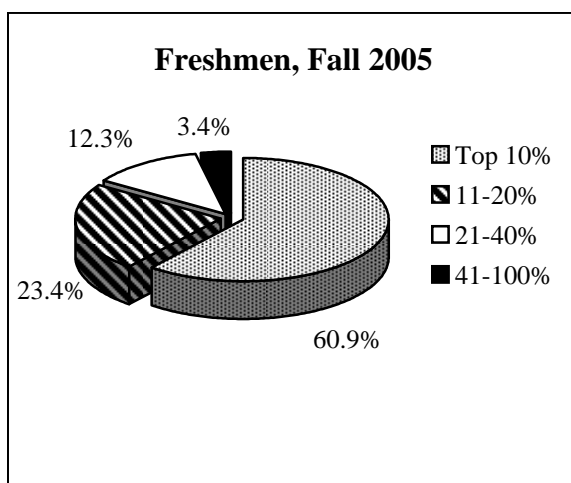
### Admissions, Undergraduate Transfer Students, Fall 1996-2005

Year	Applied	Accepted	Enrolled
1996	202	80	42
1997	231	137	69
1998	168	85	51
1999	194	113	58
2000	200	104	66
2001	237	76	40
2002	187	92	50
2003	152	100	49
2004	216	93	48
2005	263	95	51

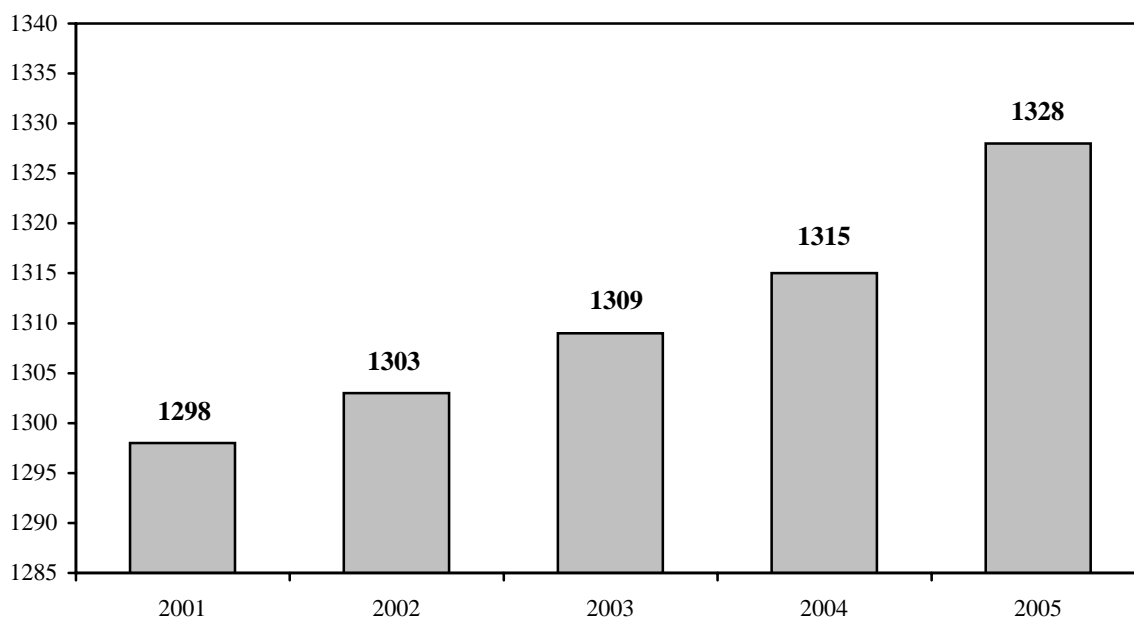


## High School Rank of Entering Freshmen, 2001-2005

	2001		2002		2003		2004		2005	
Rank	#	%	#	%	#	%	#	%	#	%
Top 10%	503	62.1%	458	62.1%	440	64.6%	478	64.9%	425	60.9%
11-20%	192	23.7%	171	23.2%	140	20.6%	177	24.0%	163	23.4%
21-40%	96	11.9%	85	11.5%	72	10.6%	67	9.1%	86	12.3%
41-60%	12	1.5%	15	2.0%	21	3.1%	11	1.5%	18	2.6%
61-80%	2	0.2%	7	0.9%	6	0.9%	2	0.3%	6	0.9%
81-100%	5	0.6%	1	0.1%	2	0.3%	2	0.3%	0	0.0%
Not Available	179		270		326		384		422	
<b>Total</b>	<b>989</b>		<b>1,007</b>		<b>1,007</b>		<b>1,121</b>		<b>1,120</b>	

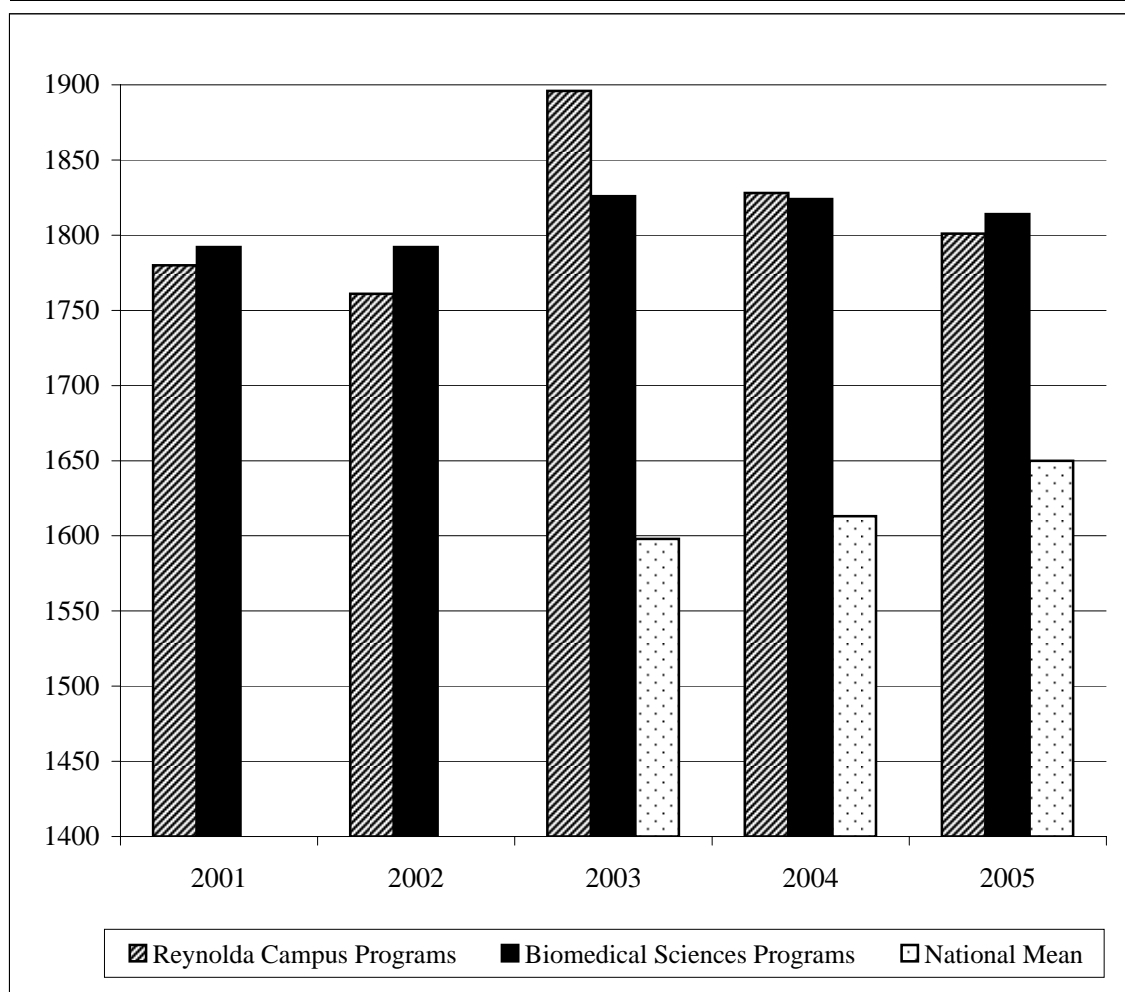


## Average SAT Scores for Entering Freshmen, 2001-2005



## Average GRE Scores for Entering Students, Graduate School, 2001-2005

<b>Reynolda Campus Programs</b>		Verbal (%)	Quantitative (%)	Analytical (%)	Total
	2001	523 (66)	630 (62)	627 (68)	1780
	2002	515 (62)	624 (57)	622 (62)	1761
	2003	561(76)	662(64)	673(71)	1896
	2004	546(69)	645(55)	637(65)	1828
	2005	495(59)	669(62)	636(65)	1801
<b>Biomedical Sciences Programs</b>					
	2001	517 (64)	635 (63)	640 (72)	1792
	2002	525 (65)	646 (59)	621 (61)	1792
	2003	516 (64)	658 (64)	652 (68)	1826
	2004	503(60)	670(66)	651(73)	1824
	2005	515(64)	682(64)	617(58)	1814
National Mean (approximate) 2005		469	597	570	1636



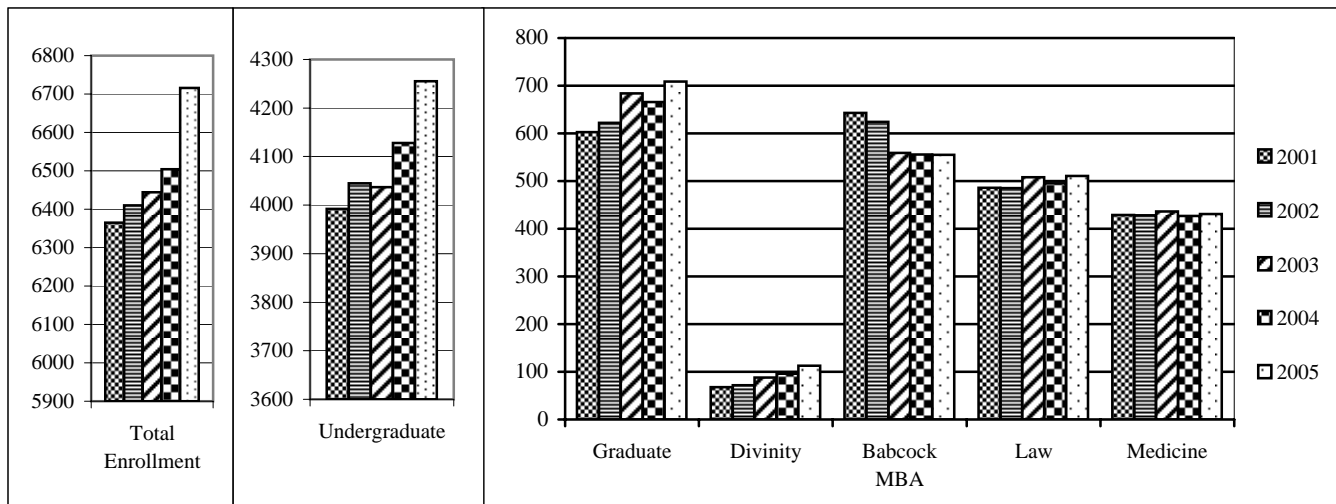
## Fall Enrollment, 1986-2005

Year	Undergraduate	Graduate	Divinity	Law	Management	Medicine	Allied Health*	Total
1986-87	3,472	339	0	491	270	425	57	5,054
1987-88	3,517	358	0	476	364	426	68	5,029
1988-89	3,579	398	0	464	423	419	54	5,337
1989-90	3,544	438	0	461	418	430	69	5,360
1990-91	3,592	470	0	461	451	439	64	5,477
1991-92	3,650	518	0	463	501	433	114	5,679
1992-93	3,624	467	0	473	507	436	117	5,624
1993-94	3,538	588	0	464	506	439	126	5,661
1994-95	3,620	552	0	472	513	448	143	5,748
1995-96	3,701	585	0	470	565	437	134	5,892
1996-97	3,771	578	0	460	615	450	127	6,001
1997-98	3,841	587	0	475	627	452	125	6,107
1998-99	3,855	583	0	475	654	445	122	6,134
1999-00	3,857	575	28	472	648	441	133	6,154
2000-01	3,950 (3,744)	584	50	476	628	440	136	6,264
2001-02	3,992 (3,746)	603	68	486	643	429	144	6,365
2002-03	4,045 (3,748)	622	72	485	624	428	134	6,410
2003-04	4,037 (3,735)	684	88	508	559	436	132	6,444
2004-05	4,128 (3,801)	666	96	495	556	427	136	6,504
2005-06	4,263 (3,909)	709	113	511	555	431	134	6,716

\*In the years 2002-03 and later, the Allied Health Category includes the Nurse Anesthesia and Physician Assistant programs in which students earn graduate degrees. The Medical Technology program is counted in "Undergraduate" since no graduate degree is awarded.

( ) = Reynolda Campus undergraduate students (excludes Study Abroad and Allied Health students)

## Enrollment by School, Fall 2001-2005



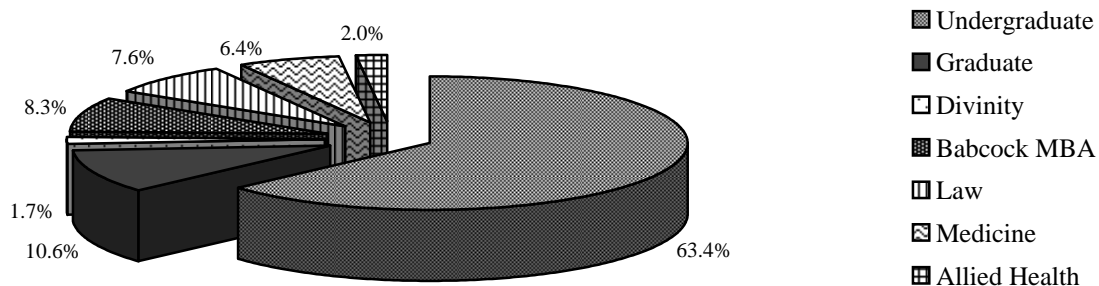
## Enrollment by Class and by School, Fall 2005

	Male	Female	Total	FTE**
Freshmen	565	581	1,146	1,144
Sophomores	547	539	1,086	1,081
Juniors	487	510	997	993
Seniors	490	512	1,002	980
Unclassified*	8	24	32	29
Total Undergraduates	2,097	2,166	4,263	4,227
Allied Health (Undergraduate)	2	6	8	8
Study Abroad	122	224	346	346
Reynolda Campus	1,973	1,936	3,909	3,873
Graduate - Arts & Sciences	180	248	428	387
Graduate - Medicine	118	163	281	271
Divinity	62	51	113	108
Babcock MBA	417	138	555	553
Law School	278	233	511	510
Medical School	240	191	431	431
Allied Health (Graduate)*	30	104	134	134
<b>University Total</b>	<b>3,422</b>	<b>3,294</b>	<b>6,716</b>	<b>6,622</b>

\*Medical Technology students (Allied Health) are counted as unclassified undergraduates. The other Allied Health students (Nurse Anesthesia and Physician Assistant) are counted in the "Allied Health (Graduate)" category.

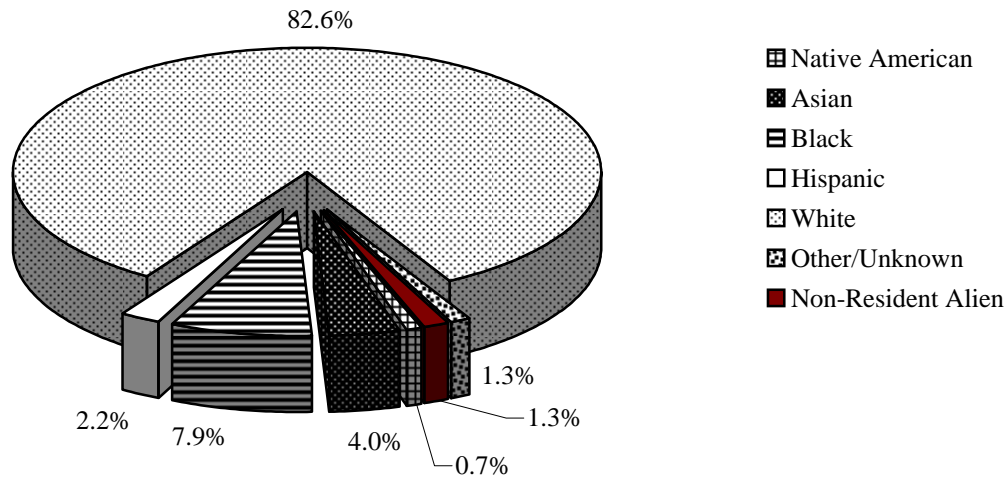
\*\*Full-time equivalent

Source: IPEDS-Fall Enrollment 2005



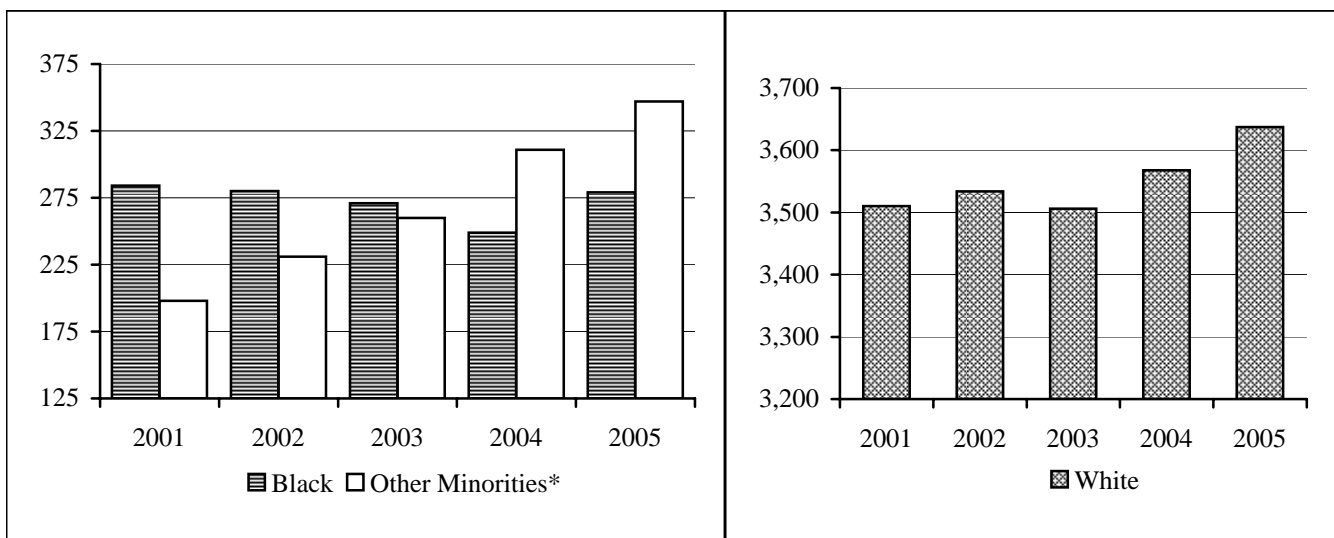
## First-time Freshmen Ethnic Enrollment, Fall 2005

Ethnicity	Male		Female		Total by Ethnicity	
	#	%	#	%	#	%
Native American	3	0.5%	5	0.9%	8	0.7%
Asian	27	4.9%	18	3.2%	45	4.0%
Black	40	7.2%	48	8.5%	88	7.9%
Hispanic	10	1.8%	15	2.6%	25	2.2%
White	455	82.3%	470	82.9%	925	82.6%
Other/Unknown	11	2.0%	3	0.5%	14	1.3%
Non-Resident Alien	7	1.3%	8	1.4%	15	1.3%
<b>Total by Gender</b>	<b>553</b>	<b>49.4%</b>	<b>567</b>	<b>50.6%</b>	<b>1,120</b>	<b>100%</b>



## Undergraduate Ethnic Enrollment, Fall 2001-2005

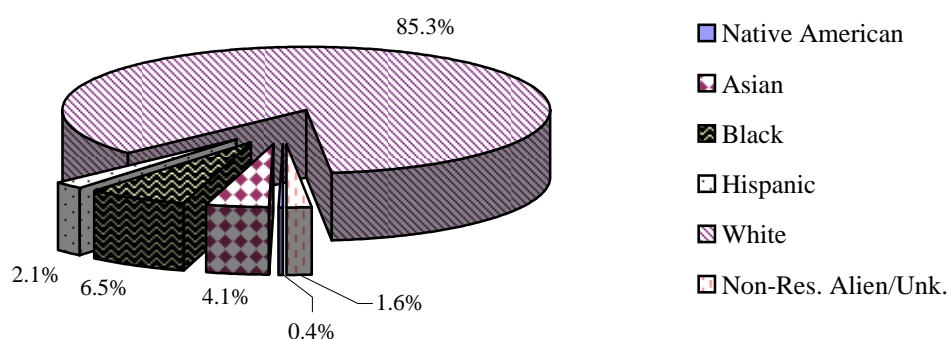
Year	Black	Other Minorities*	Total Minorities	White	% Minority
2001	284	198	482	3,510	12.1%
2002	280	231	511	3,534	12.6%
2003	271	260	531	3,506	13.2%
2004	249	311	560	3,568	13.6%
2005	279	347	626	3,637	14.7%



\*Includes all non-resident aliens

## Undergraduate Ethnic Enrollment, Fall 2005

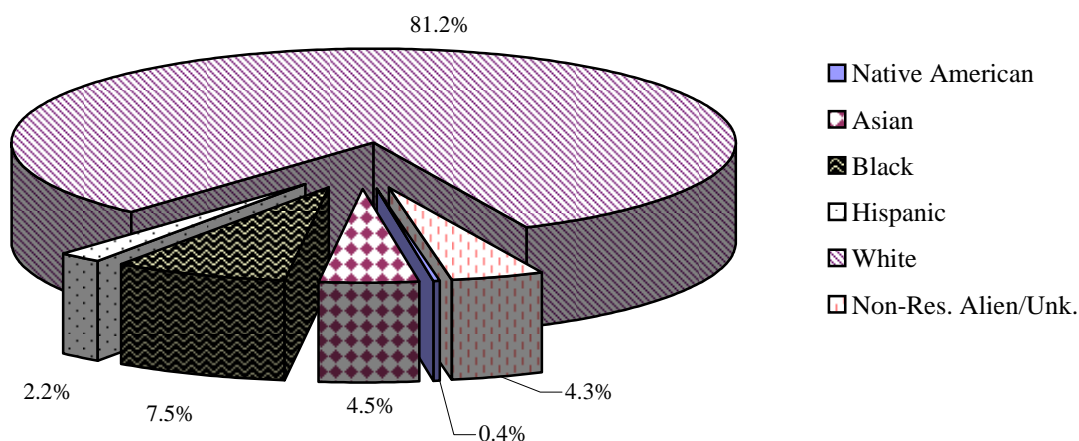
Ethnicity	Male		Female		Total by Ethnicity	
	#	%	#	%	#	%
Native American	7	0.3%	10	0.5%	17	0.4%
Asian	87	4.1%	86	4.0%	173	4.1%
Black	138	6.6%	141	6.5%	279	6.5%
Hispanic	38	1.8%	51	2.4%	89	2.1%
White	1,794	85.6%	1,843	85.1%	3,637	85.3%
Non-Res. Alien/Unk.	33	1.6%	35	1.6%	68	1.6%
<b>Total by Gender</b>	<b>2,097</b>	<b>49.2%</b>	<b>2,166</b>	<b>50.8%</b>	<b>4,263</b>	<b>100.0%</b>



## University Ethnic Enrollment\*, Fall 2005

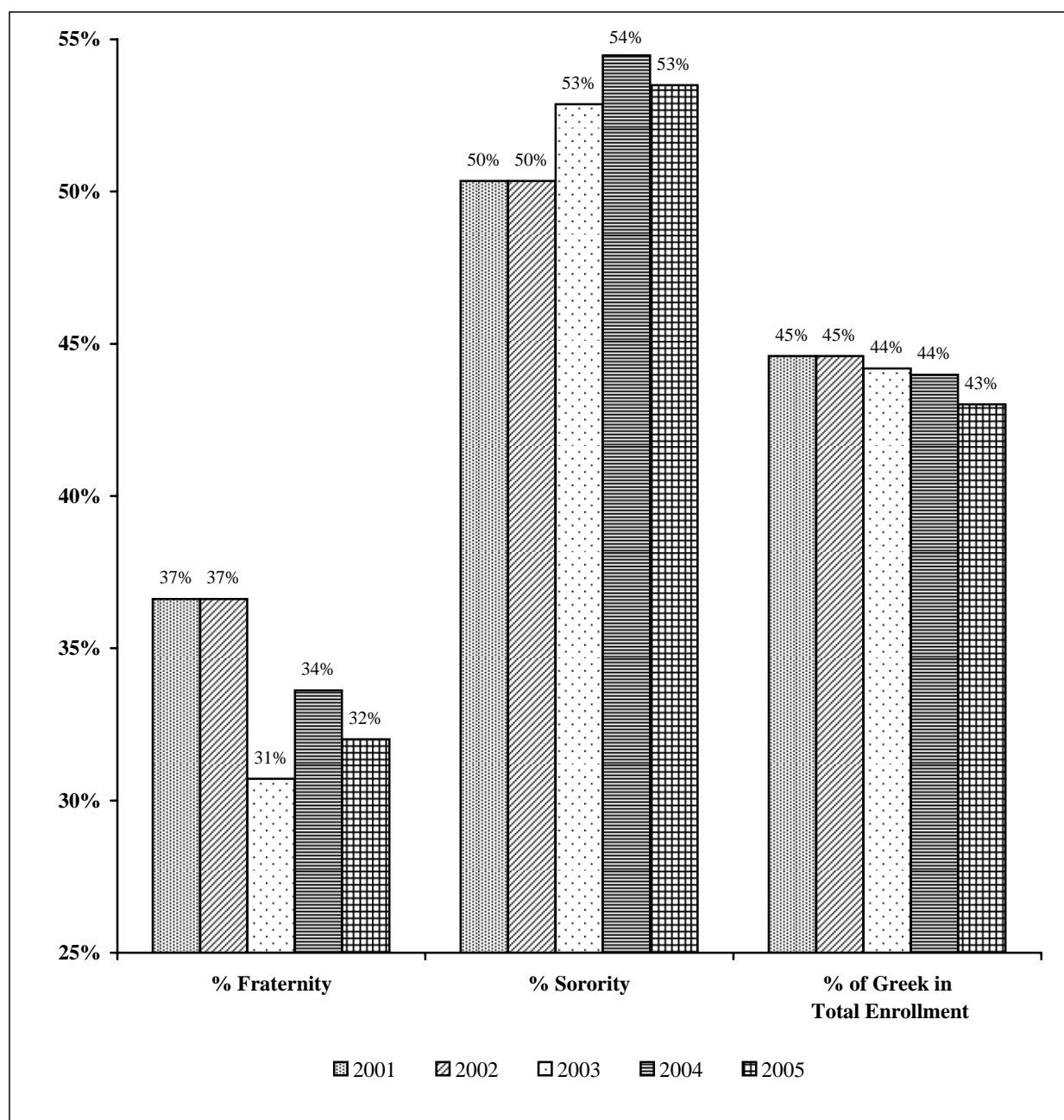
Ethnicity	Male		Female		Total by Ethnicity	
	#	%	#	%	#	%
Native American	10	0.1%	15	0.2%	25	0.4%
Asian	163	2.4%	138	2.1%	301	4.5%
Black	223	3.3%	282	4.2%	505	7.5%
Hispanic	71	1.1%	75	1.1%	146	2.2%
White	2,797	41.6%	2,654	39.5%	5,451	81.2%
Non-Res. Alien/Unk.	158	2.4%	130	1.9%	288	4.3%
<b>Total by Gender</b>	<b>3,422</b>	<b>51.0%</b>	<b>3,294</b>	<b>49.0%</b>	<b>6,716</b>	<b>100.0%</b>

\*Includes all schools and programs based on IPEDS - Fall Enrollment 2005



## Undergraduate Greek Affiliation, Spring 2001-2005

Year	Male Enrollment		Female Enrollment		Total Greek	Percent of Greek in Total Enrollment
	Fraternity	Total (%)	Sorority	Total (%)		
2001	707	1931 (37%)	1024	2034 (50%)	1731	45%
2002	656	1956 (34%)	1052	2032 (52%)	1708	45%
2003	589	1918 (31%)	1070	2024 (53%)	1659	44%
2004	642	1910 (34%)	1102	2023 (54%)	1744	44%
2005	615	1921 (32%)	1078	2015 (53%)	1693	43%

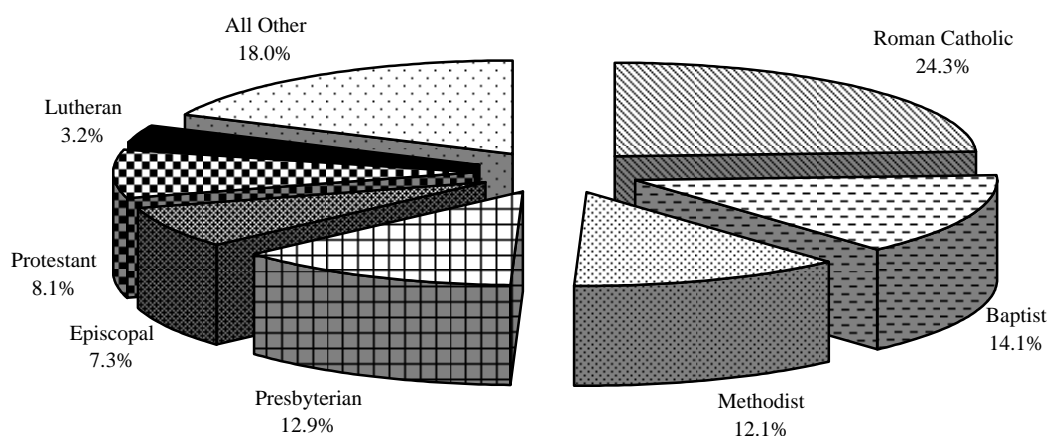




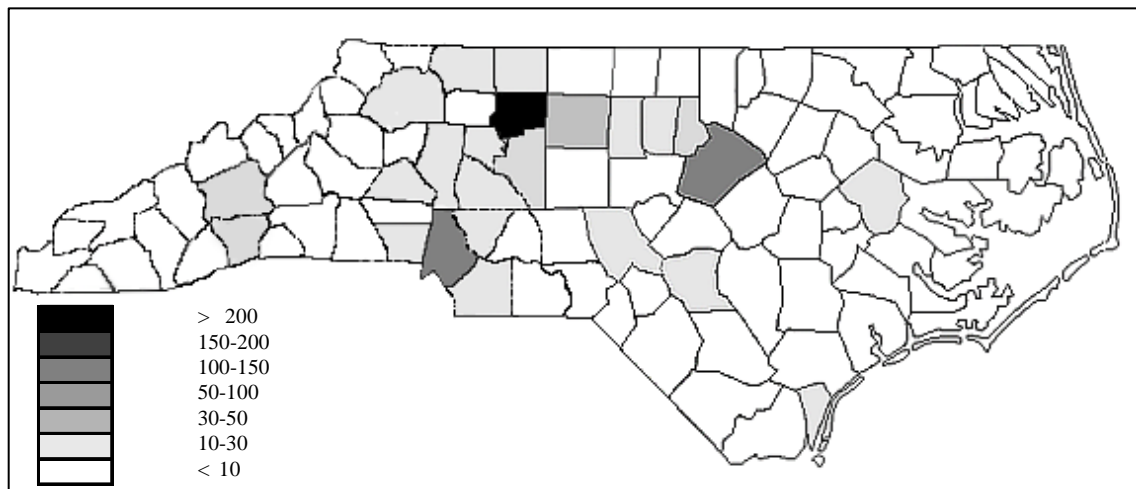
## Undergraduate Religious Preference, Fall 2001-2005

	Fall 2001	Fall 2002	Fall 2003	Fall 2004	Fall 2005
Not Reported	7.3%	8.8%	9.9%	10.5%	2.0%
Baptist	14.1%	14.7%	14.5%	13.5%	14.1%
Buddhist	0.1%	0.1%	0.2%	0.2%	0.2%
Christian Scientist	0.2%	0.2%	0.2%	0.2%	0.1%
Episcopal	7.5%	7.2%	6.8%	7.2%	7.3%
Greek Orthodox	0.3%	0.4%	0.5%	0.7%	0.9%
Hindu	0.4%	0.5%	0.5%	0.6%	0.7%
Jewish	1.3%	1.5%	1.6%	1.7%	2.1%
Lutheran	3.9%	3.8%	3.7%	3.1%	3.2%
Methodist	13.5%	13.0%	13.2%	12.2%	12.1%
Moravian	0.4%	0.4%	0.2%	0.3%	0.3%
Mormon	0.2%	0.2%	0.1%	0.2%	0.2%
Muslim	0.4%	0.4%	0.3%	0.3%	0.2%
No Preference	4.6%	3.1%	2.7%	2.6%	5.1%
Presbyterian	12.1%	12.0%	11.9%	12.1%	12.9%
Protestant	7.3%	7.2%	7.4%	7.5%	8.1%
Quaker	0.2%	0.3%	0.3%	0.2%	0.1%
Roman Catholic	21.3%	21.2%	21.1%	21.7%	24.3%
United Church of Christ	1.3%	1.4%	1.3%	1.3%	1.3%
Unitarian	0.2%	0.2%	0.2%	0.3%	0.2%
Other	3.6%	3.5%	3.3%	3.8%	4.3%

## Religious Preference, Fall 2005



## North Carolina Undergraduate Students by County of Residence, Fall 2005

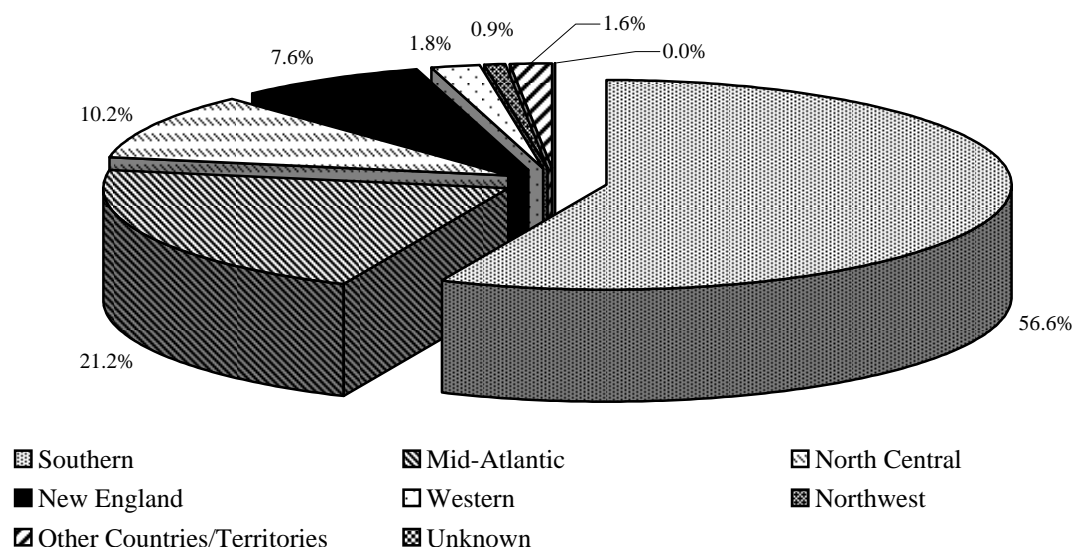


Alamance	19	Cumberland	22	Johnston	1	Randolph	8
Alexander	3	Currituck	1	Jones	1	Richmond	1
Alleghany	0	Dare	5	Lee	1	Robeson	3
Anson	0	Davidson	27	Lenoir	0	Rockingham	7
Ashe	2	Davie	16	Lincoln	7	Rowan	18
Avery	1	Duplin	1	Macon	4	Rutherford	0
Beaufort	2	Durham	27	Madison	4	Sampson	2
Bertie	0	Edgecombe	1	Martin	0	Scotland	3
Bladen	0	Forsyth	321	McDowell	1	Stanly	9
Brunswick	3	Franklin	4	Mecklenburg	94	Stokes	11
Buncombe	24	Gaston	21	Mitchell	5	Surry	17
Burke	9	Gates	0	Montgomery	8	Swain	0
Cabarrus	13	Graham	1	Moore	12	Transylvania	1
Caldwell	5	Granville	5	Nash	6	Tyrrell	0
Camden	0	Greene	0	New Hanover	10	Union	16
Carteret	2	Guilford	73	Northampton	0	Vance	2
Caswell	1	Halifax	4	Onslow	6	Wake	138
Catawba	32	Harnett	6	Orange	16	Warren	0
Chatham	3	Haywood	4	Pamlico	0	Washington	1
Cherokee	2	Henderson	16	Pasquotank	0	Watauga	6
Chowan	1	Hertford	0	Pender	2	Wayne	6
Clay	0	Hoke	0	Perquimans	0	Wilkes	17
Cleveland	5	Hyde	0	Person	1	Wilson	3
Columbus	3	Iredell	23	Pitt	9	Yadkin	7
Craven	5	Jackson	0	Polk	1	Yancey	2

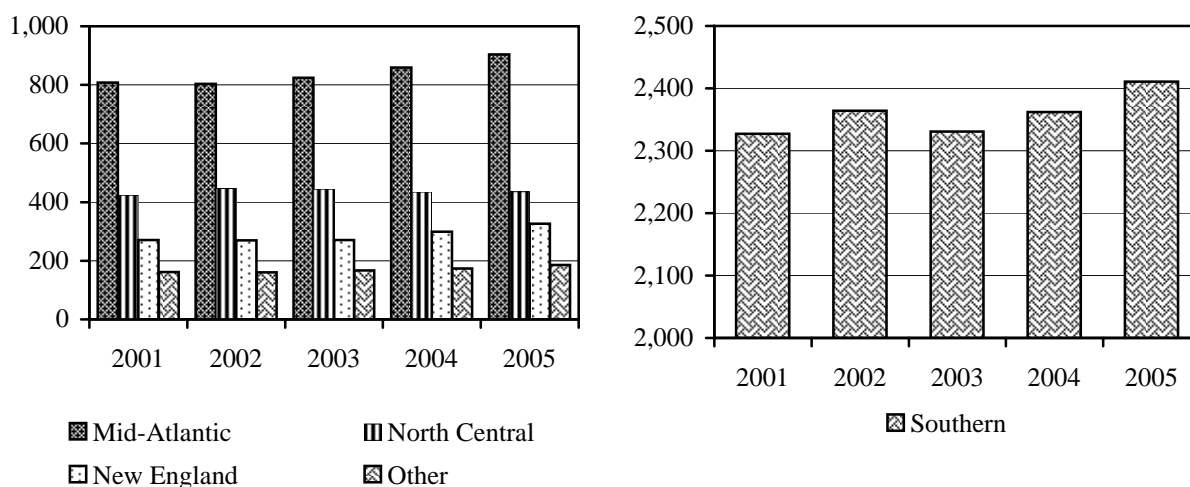
## Undergraduate Geographical Distribution by Region, Fall 2001-2005

Region	2001	%	2002	%	2003	%	2004	%	2005	%
Southern	2,327	58.3%	2,364	58.4%	2,331	57.7%	2,362	57.2%	2,411	56.6%
Mid-Atlantic	808	20.2%	803	19.9%	824	20.4%	859	20.8%	904	21.2%
North Central	424	10.6%	447	11.1%	444	11.0%	434	10.5%	436	10.2%
New England	271	6.8%	270	6.7%	271	6.7%	299	7.2%	326	7.6%
Western	77	1.9%	66	1.6%	67	1.7%	67	1.6%	78	1.8%
Northwest	35	0.9%	33	0.8%	38	0.9%	39	0.9%	39	0.9%
Other Countries/Territories	37	0.9%	40	1.0%	45	1.1%	52	1.3%	67	1.6%
Unknown	13	0.3%	22	0.5%	17	0.4%	16	0.4%	2	0.0%
<b>Total</b>	<b>3,992</b>		<b>4,045</b>		<b>4,037</b>		<b>4,128</b>		<b>4,263</b>	

## Undergraduate Geographical Distribution by Region, (%) Fall 2005



## Undergraduate Geographical Distribution by Region, Fall 2001-2005

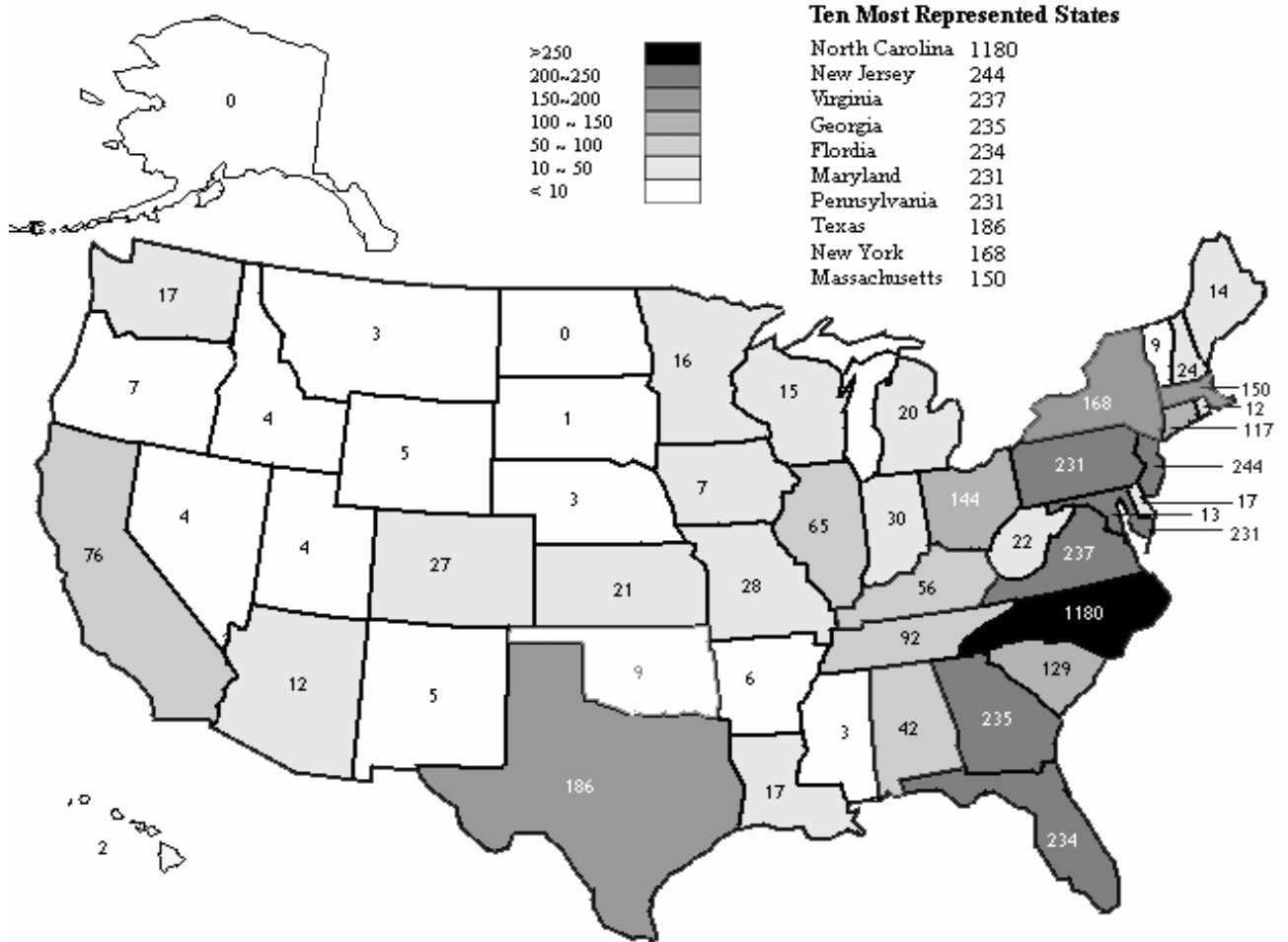


## Undergraduate Geographical Distribution by Region & State, Fall 2001-2005

		2001-02	2002-03	2003-04	2004-05	2005-06	2005-2006 Totals
<b>Southern</b>	Alabama	45	50	45	51	42	
	Florida	228	221	212	219	234	
	Georgia	202	191	212	235	235	
	Kentucky	35	43	49	55	56	
	Louisiana	12	11	11	13	17	
	Mississippi	6	3	4	3	3	
	North Carolina	1,048	1,175	1,167	1,169	1,180	(28% of total enrollment)
	South Carolina	189	155	144	123	129	
	Tennessee	126	99	89	94	92	
	Texas	199	189	191	198	186	
	Virginia	237	227	207	202	237	2,411
<b>Middle Atlantic</b>	Delaware	21	24	25	21	17	
	District of Columbia	12	9	7	10	13	
	Maryland	191	214	212	223	231	
	New Jersey	224	213	236	229	244	
	New York	149	140	135	146	168	
	Pennsylvania	211	203	209	230	231	904
<b>New England</b>	Connecticut	100	100	99	107	117	
	Maine	15	14	13	13	14	
	Massachusetts	108	105	112	133	150	
	New Hampshire	19	18	17	20	24	
	Rhode Island	16	18	18	17	12	
	Vermont	13	15	12	9	9	326
<b>Northwest</b>	Alaska	1	2	2	0	0	
	Idaho	4	3	4	6	4	
	Montana	1	1	3	2	3	
	Nevada	3	3	3	4	4	
	Oregon	8	5	4	7	7	
	Utah	3	1	2	3	4	
	Washington	15	18	20	17	17	39
<b>North Central</b>	Arizona	8	9	8	9	12	
	Arkansas	8	10	7	9	6	
	Colorado	23	21	26	28	27	
	Illinois	66	74	70	65	65	
	Indiana	26	30	28	30	30	
	Iowa	10	11	8	11	7	
	Kansas	20	18	19	20	21	
	Michigan	20	19	15	19	20	
	Minnesota	14	14	18	17	16	
	Missouri	37	45	43	28	28	
	Nebraska	5	4	3	3	3	
	New Mexico	1	3	3	4	5	
	North Dakota	2	3	1	2	0	
	Ohio	116	120	132	135	144	
	Oklahoma	16	15	17	12	9	
	South Dakota	3	3	1	2	1	
	West Virginia	30	32	25	20	22	
	Wisconsin	16	12	14	14	15	
	Wyoming	3	4	6	6	5	436
<b>Western</b>	California	73	65	66	65	76	
	Hawaii	4	1	1	2	2	78
<b>Territories</b>		1	3	4	1	1	
<b>Unknown</b>		13	22	17	16	2	
<b>Other Countries</b>		36	37	41	51	66	69
<b>Total</b>		<b>3,992</b>	<b>4,045</b>	<b>4,037</b>	<b>4,128</b>	<b>4,263</b>	

Note: Regions are defined by Accrediting Agencies

## Undergraduates from the United States, 2001-2005

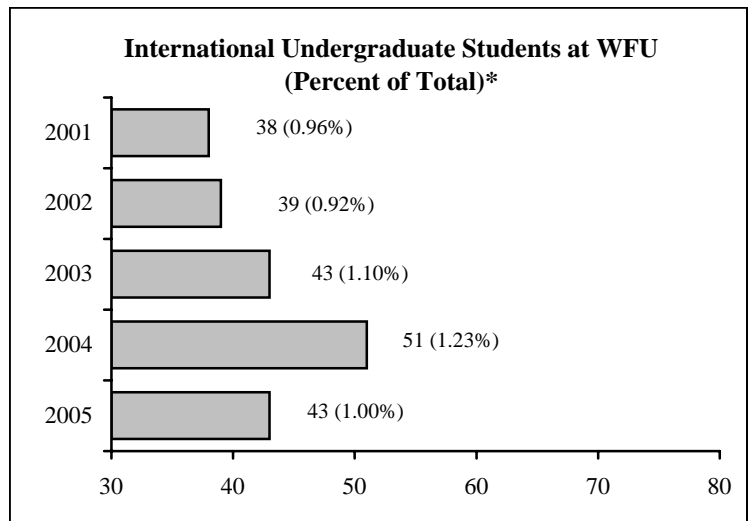


## Undergraduate International Students

### Countries Represented\*

Bermuda	Kuwait
Bolivia	Malawi
Canada	Malaysia
Ecuador	Netherlands
France	Poland
Germany	Slovenia
Guatemala	Spain
India	Sri Lanka
Israel	Sweden
Italy	Taiwan
Japan	United Kingdom
Kenya	Vietnam
Korean	Yugoslavia (former)

\*Source: Center for International Studies



## Total Number of Degrees Granted, 1986-2005

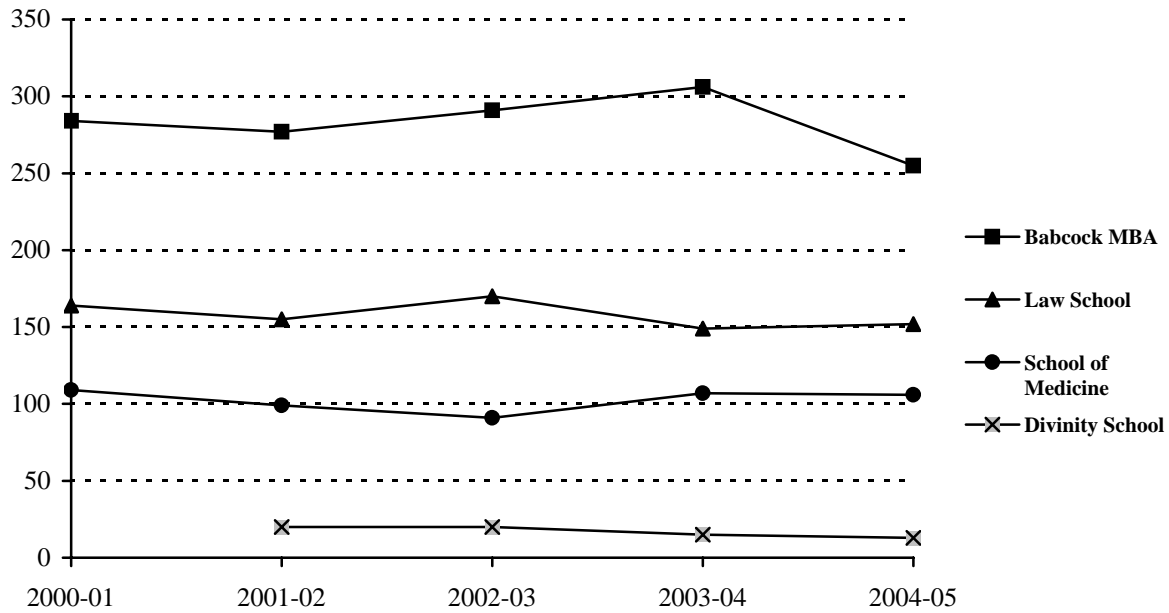
Year	Undergraduate	Master	Divinity	Doctorate	Medicine	Law	Total	Cumulative Total	Honorary
1985-86	687	219	0	10	104	160	1,180	35,075	5
1986-87	758	192	0	14	104	164	1,232	36,307	7
1987-88	738	205	0	26	106	159	1,234	37,541	5
1988-89	858	200	0	9	98	158	1,323	38,864	9
1989-90	843	271	0	14	99	148	1,375	40,239	7
1990-91	782	262	0	16	101	155	1,316	41,555	5
1991-92	819	304	0	19	99	147	1,388	42,943	5
1992-93	869	326	0	18	107	160	1,480	44,423	5
1993-94	817	315	0	16	91	150	1,389	45,812	4
1994-95	829	337	0	17	114	149	1,446	47,258	6
1995-96	763	333	0	23	96	159	1,374	48,632	8
1996-97	887	399	0	20	105	155	1,566	50,198	6
1997-98	898	432	0	32	106	145	1,613	51,811	6
1998-99	878	439	0	30	110	157	1,614	53,425	5
1999-00	884	454	0	28	103	150	1,619	55,044	7
2000-01	901	469	0	25	109	153	1,657	56,701	3
2001-02	906	460	20	25	99	155	1,645	58,346	5
2002-03	916	477	20	35	91	159	1,698	60,044	5
2003-04	1,000	547	15	39	107	149	1,857	61,901	5
2004-05	953	498	13	48	106	152	1,770	63,671	3

## Number and Type of Degrees Granted, 2004 and 2005

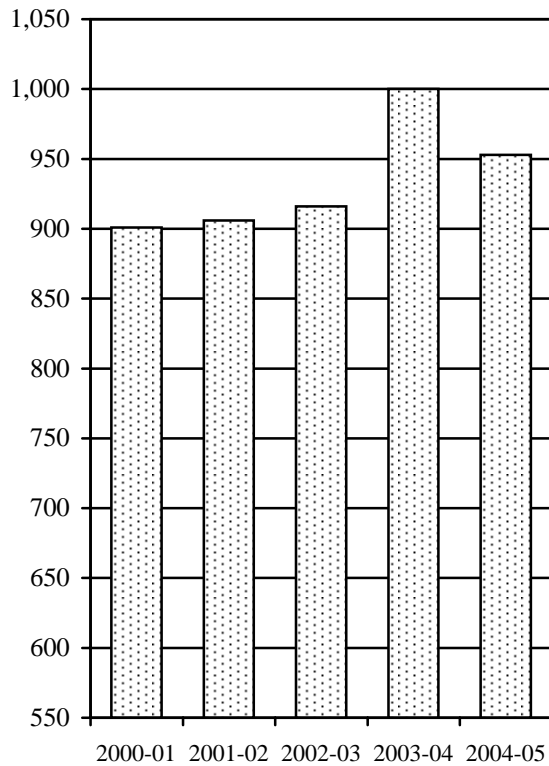
Department/Program	2003-04									2004-05								
	Bachelor*			Master			Doctorate			Bachelor*			Master			Doctorate		
	M	F	Total	M	F	Total	M	F	Total	M	F	Total	M	F	Total	M	F	Total
Accountancy	8	5	13	31	16	47				10	10	20	28	18	46			
Analytical Finance	43	11	54							27	15	42						
Anthropology	4	12	16							7	6	13						
Art History	0	7	7							2	3	5						
Biology	22	42	64	1	3	4	2	0	2	33	39	72	2	3	5	3	1	4
Business	73	44	117							64	47	111						
Chemistry	13	14	27	1	3	4	2	1	3	12	1	13				5		5
Classical Studies	0	1	1							2	0	2						
Communication	44	56	100	2	11	13				42	50	92	3	3	6			
Computer Science	9	2	11	10	2	12				10	3	13	5	5	10			
Counseling				3	13	16							4	11	15			
Dentistry	1		1															
East Asian Languages and Cultures										2		2						
Economics	32	14	46							46	12	58						
Education	3	15	18	8	25	33				4	16	20	8	29	37			
Engineering																		
English	28	43	71	1	4	5				24	47	71	4	12	16			
French		7	7								2	2						
German										2	5	7						
Health & Exercise Science	11	29	40	2	5	7				6	32	38	3	4	7			
History	38	23	61							27	22	49						
Information Systems	16		16							7	3	10						
Latin																		
Liberal Studies				4	5	9							3	6	9			
Mathematical Business	0	1	1							1	3	4						
Mathematical Economics	5	5	10							3	1	4						
Mathematics	5	10	15	1	3	4				7	7	14	4	3	7			
Medical Technology																		
Music History/Theory/Composition	2	2	4							1		1						
Music Performance	2	1	3							2	2	4						
Philosophy	10	1	11							4	2	6						
Physics	7	2	9	0	1	1	3	2	5	5	3	8				5		5
Political Science	53	46	99							58	45	103						
Psychology	26	68	94	2	10	12				23	57	80	3	9	12			
Religion	7	8	15	1	2	3				11	8	19	2	2	4			
Russian																		
Sociology	12	24	36							9	14	23						
Spanish	4	11	15							10	28	38						
Speech Comm. and Theatre Arts	1	0	1															
Studio Art	3	8	11							2	2	4						
Theatre	1	5	6							2	3	5						
<b>Sub-Total</b>	483	517	1000	67	103	170	7	3	10	465	488	953	69	105	174	13	1	14
Biochemistry/Molecular Biology					1	1	2		2							1	3	4
Biomedical Engineering								3	3							2		2
Cancer Biology					1	1	2		2									
Clinical Epidemiology and Health Services Research				4	4	8											4	4
Microbiology/Immunology							1	2	3								3	3
Molecular/Cellular Pathobiology							1	1	2				1		1	1	3	4
Molecular Genetics							1		1							2	2	4
Molecular Medicine							2	2	4							1	2	3
Neurobiology/Anatomy							2	1	3							1		1
Neuroscience							1	3	4				1		1	1	4	5
Pharmacology				1		1	3	1	4					1	1	1	3	4
Physiology								1	1									
Physician Assistant				13	34	47							15	33	48			
<b>Sub-Total</b>				18	40	58	18	11	29				19	38	57	10	24	34
Divinity				11	4	15							5	8	13			
Law				11	2	13	75	74	149				9	3	12	87	65	152
MBA				236	70	306							190	65	255			
Medicine							65	42	107							68	38	106
<b>Grand Total</b>	483	517	1000	343	219	562	165	130	295	465	488	953	292	219	511	178	128	306

\*Degrees are conferred based on the field of the primary major only. For an analysis of double majors, see page 27. For administrative purposes, a student with two majors must designate one of the two fields as the primary major.

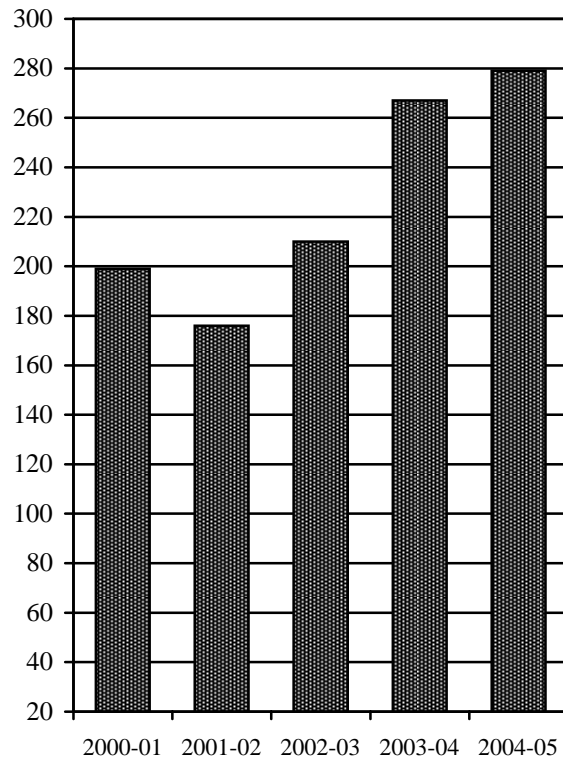
## Number and Type of Degrees Granted, 2001-2005



### Undergraduate Degrees



### Graduate Degrees

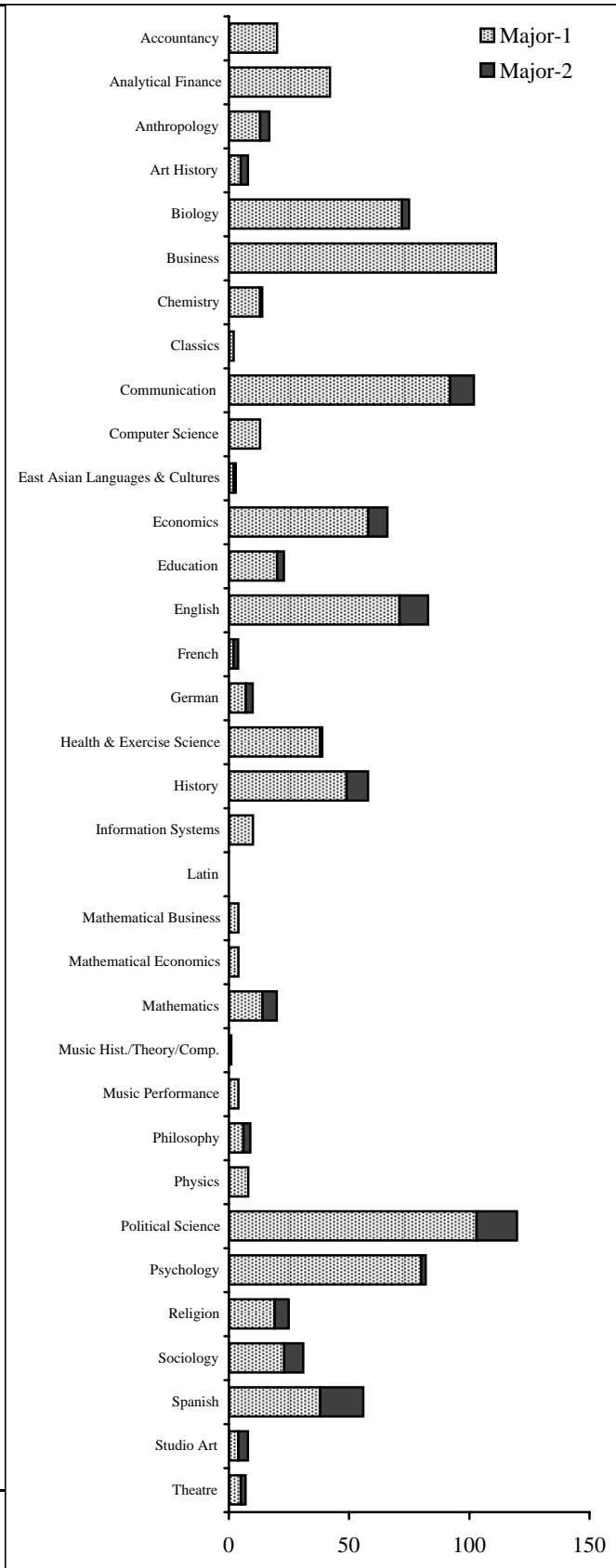


Note: Physician Assistant program awarded Master's degrees for the first time in 2003-2004



## Graduates by Double Major, 2004-05

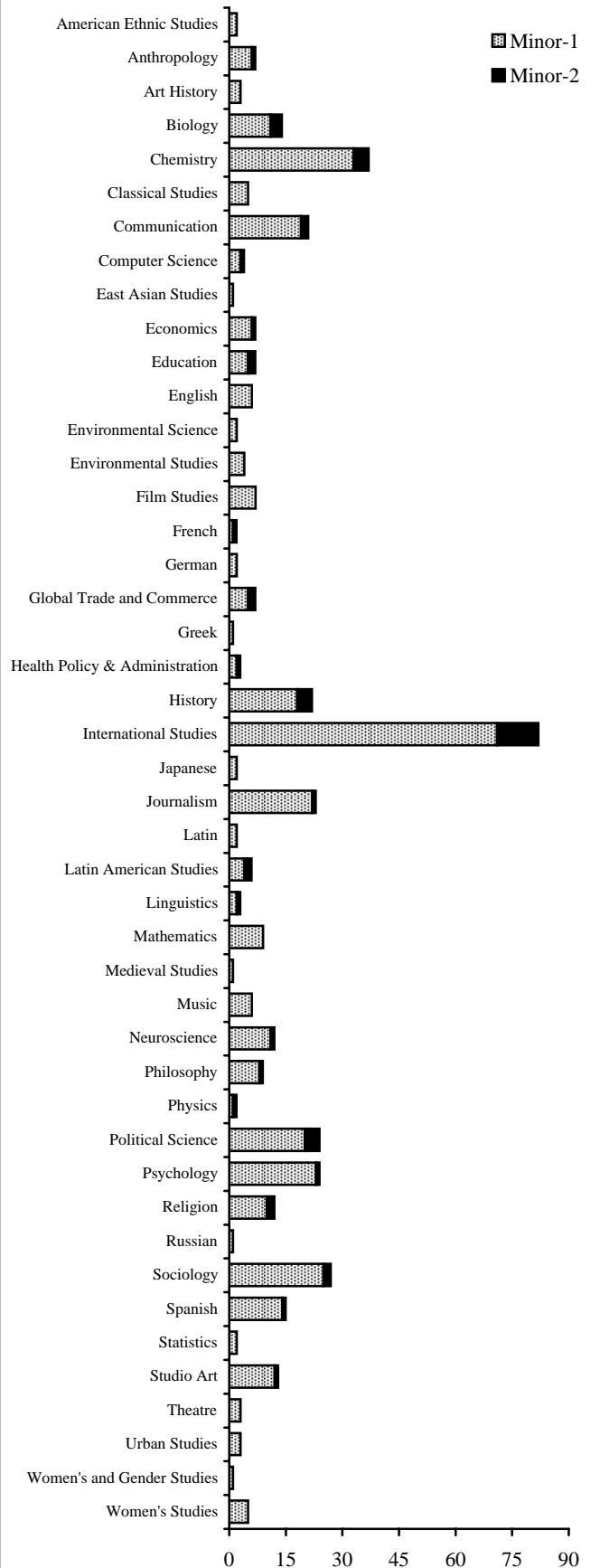
Program	Major-1	Major-2	Total
Accountancy	20	0	20
Analytical Finance	42	0	42
Anthropology	13	4	17
Art History	5	3	8
Biology	72	3	75
Business	111	0	111
Chemistry	13	1	14
Classics	2	0	2
Communication	92	10	102
Computer Science	13	0	13
East Asian Languages & Cultures	2	1	3
Economics	58	8	66
Education	20	3	23
English	71	12	83
French	2	2	4
German	7	3	10
Health & Exercise Science	38	1	39
History	49	9	58
Information Systems	10	0	10
Latin	0	0	0
Mathematical Business	4	0	4
Mathematical Economics	4	0	4
Mathematics	14	6	20
Music Hist./Theory/Comp.	1	0	1
Music Performance	4	0	4
Philosophy	6	3	9
Physics	8	0	8
Political Science	103	17	120
Psychology	80	2	82
Religion	19	6	25
Sociology	23	8	31
Spanish	38	18	56
Studio Art	4	4	8
Theatre	5	2	7
<b>TOTAL</b>	<b>953</b>	<b>126</b>	<b>1,079</b>



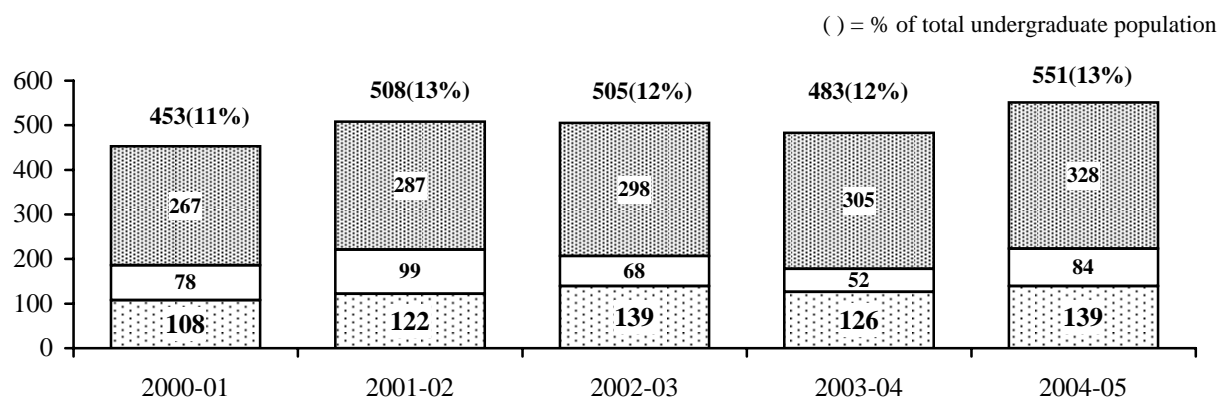
Note: For administrative purposes, a student with two majors must designate one of the two fields as the primary major.

## Graduates by Minor, 2004-05

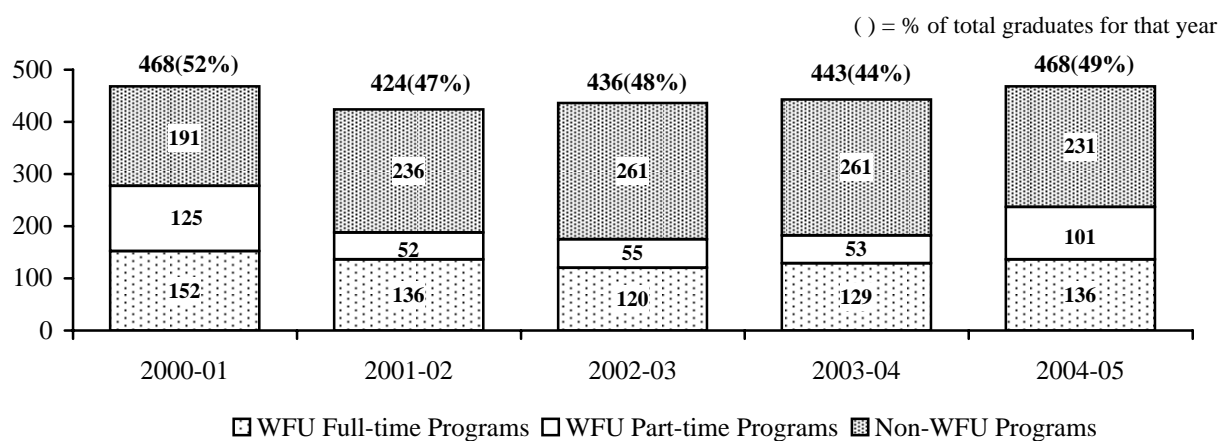
Program	Minor-1	Minor-2	Total
American Ethnic Studies	2		2
Anthropology	6	1	7
Art History	3		3
Biology	11	3	14
Chemistry	33	4	37
Classical Studies	5		5
Communication	19	2	21
Computer Science	3	1	4
East Asian Studies	1		1
Economics	6	1	7
Education	5	2	7
English	6		6
Environmental Science	2		2
Environmental Studies	4		4
Film Studies	7		7
French	1	1	2
German	2		2
Global Trade and Commerce	5	2	7
Greek	1		1
Health Policy & Administration	2	1	3
History	18	4	22
International Studies	71	11	82
Japanese	2		2
Journalism	22	1	23
Latin	2		2
Latin American Studies	4	2	6
Linguistics	2	1	3
Mathematics	9		9
Medieval Studies	1		1
Music	6		6
Neuroscience	11	1	12
Philosophy	8	1	9
Physics	1	1	2
Political Science	20	4	24
Psychology	23	1	24
Religion	10	2	12
Russian	1		1
Sociology	25	2	27
Spanish	14	1	15
Statistics	2		2
Studio Art	12	1	13
Theatre	3		3
Urban Studies	3		3
Women's and Gender Studies	1		1
Women's Studies	5		5
<b>TOTAL</b>	<b>400</b>	<b>51</b>	<b>451</b>



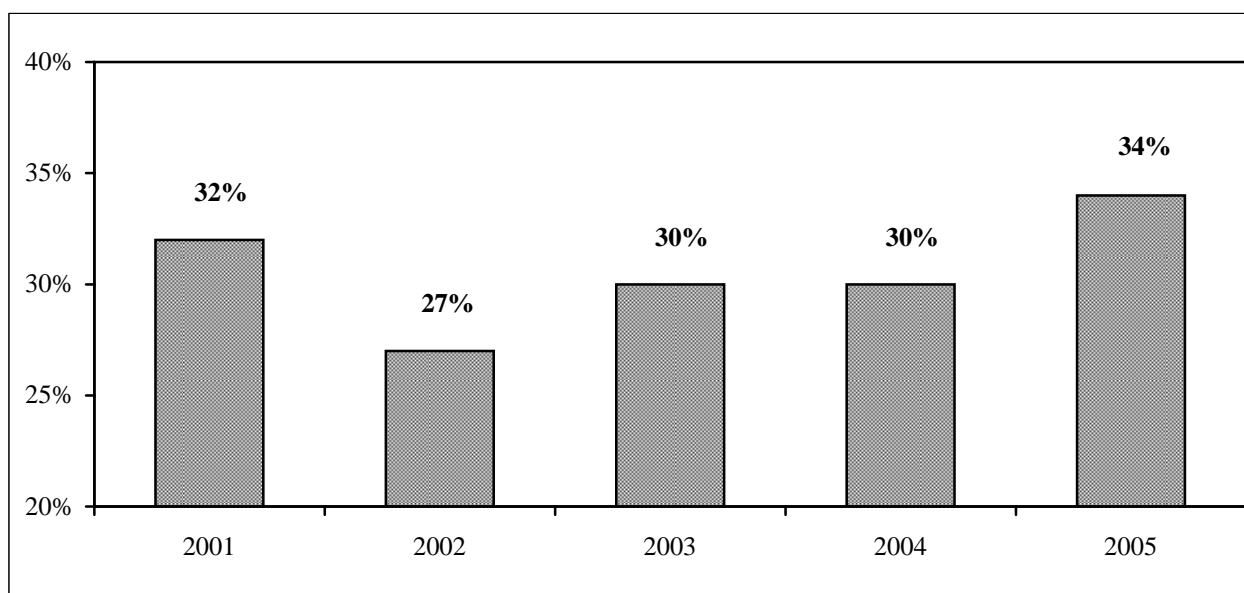
## Undergraduates Receiving Degree Credits Abroad, 2001-2005



## Senior Graduates Receiving Degree Credits Abroad, 2001-2005



## Undergraduates Receiving Academic Distinction\*, 2001-2005

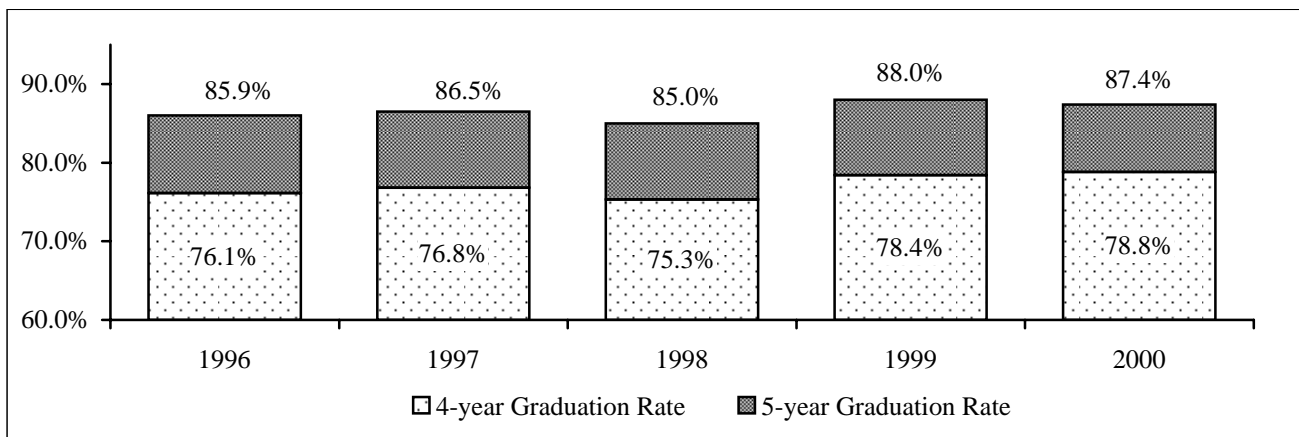


\* Minimum criteria: cum laude - 3.4, magna cum laude - 3.6, summa cum laude - 3.8

## Undergraduate Graduation and Attrition Rates

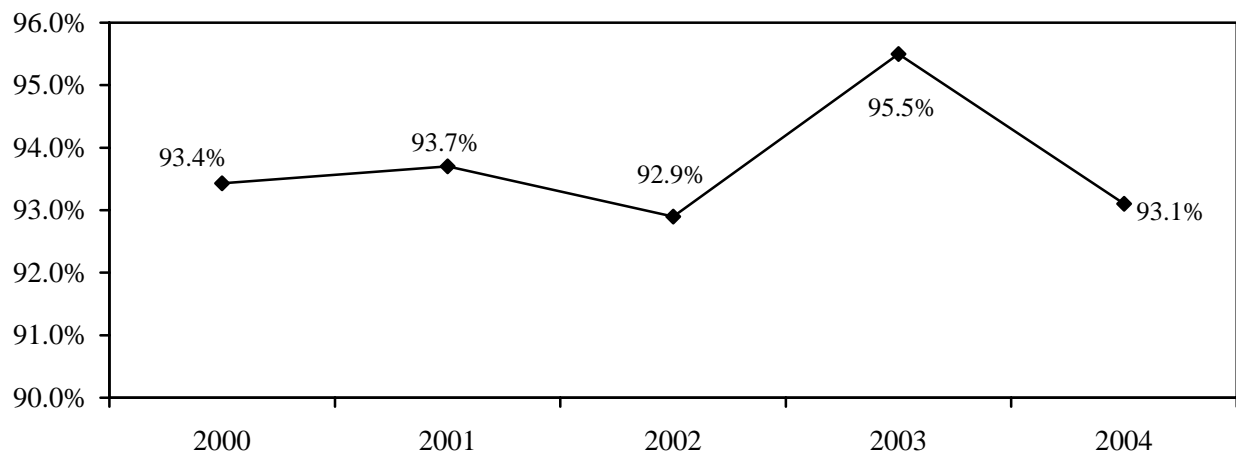
Entering First-time Freshmen, Fall 1996-2000

Year	Number Entering	Graduated (Within 4 Years)	Graduated (Within 5 Years)	Withdrew or Transferred	Academically Ineligible
1996	936	76.1%	85.9%	12.1%	0.9%
1997	964	76.8%	86.5%	12.2%	0.4%
1998	991	75.3%	85.0%	12.7%	0.9%
1999	969	78.4%	88.0%	10.3%	1.0%
2000	1,020	78.8%	87.4%	11.1%	0.1%



## First-time Freshmen Retention Rate, 2000-2004

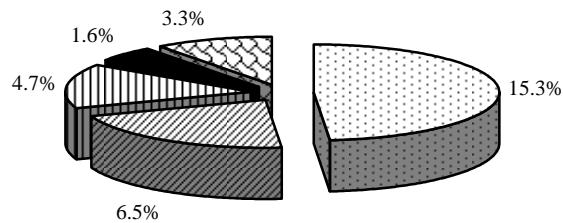
Fall	Total Enrollment	# Returned Following Fall	Retention Rate Following Fall
2000	1,020	953	93.4%
2001	983	921	93.7%
2002	999	928	92.9%
2003	1,003	958	95.5%
2004	1,108	1,032	93.1%



## Placement of 2005 Graduating Class\*

### GRADUATE & PROF. SCHOOLS

Arts and Sciences	15.3%
Law School	6.5%
Medical School	4.7%
Deferring	1.6%
Other	3.3%
<b>Total</b>	<b>31.4%</b>

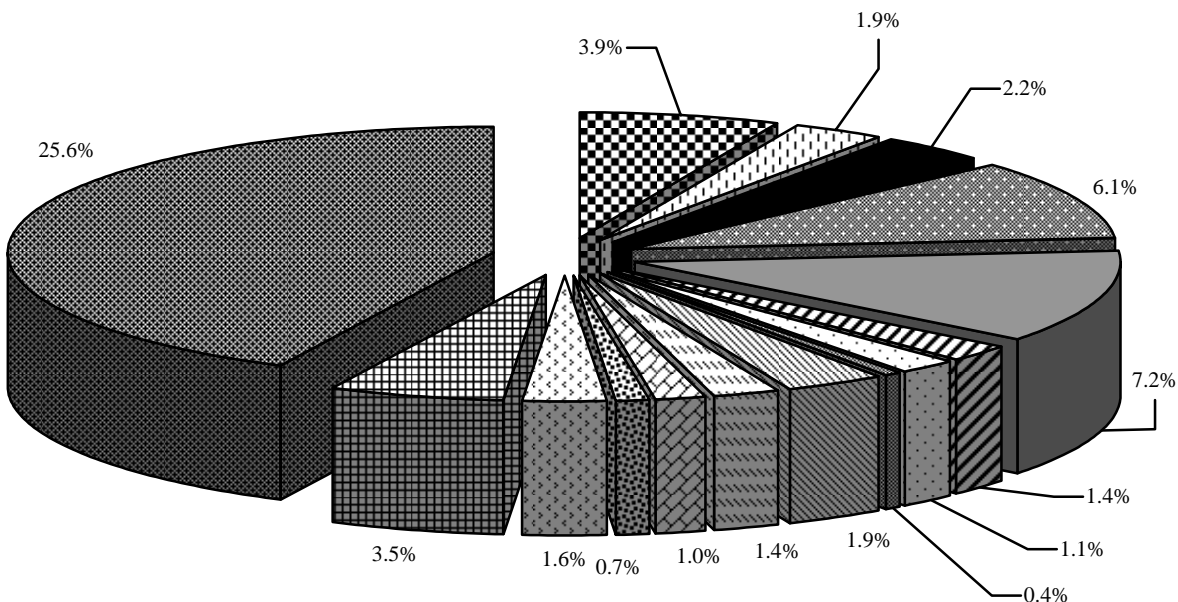


■ Arts and Sciences ■ Law School ■ Medical School ■ Deferring ■ Other

\*Response to Placement Survey six months after graduation (81.59%)--Office of Career Services

Accounting	3.9%	Law	1.9%
Professional Athletics**	1.9%	Management	1.4%
Consulting	2.2%	Media	1.0%
Financial Services	6.1%	Advertising	0.7%
Education/Teaching	7.2%	Research	1.6%
Government/Military	1.4%	Sales/Marketing	3.5%
Education/Administration	1.1%	Other	25.6%
Insurance	0.4%	<b>Total</b>	<b>59.8%</b>

\*\*Does not include coaching

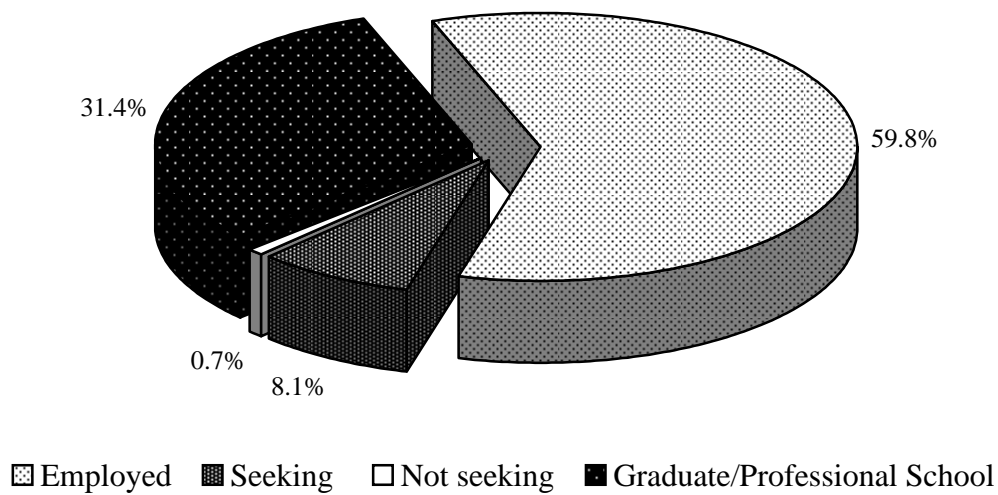


■ Accounting	■ Professional Athletics**	■ Consulting	■ Financial Services
■ Education/Teaching	■ Government/Military	■ Education/Administration	■ Insurance
■ Law	■ Management	■ Media	■ Advertising
■ Research	■ Sales/Marketing	■ Other	

## Placement of 2005 Graduating Class

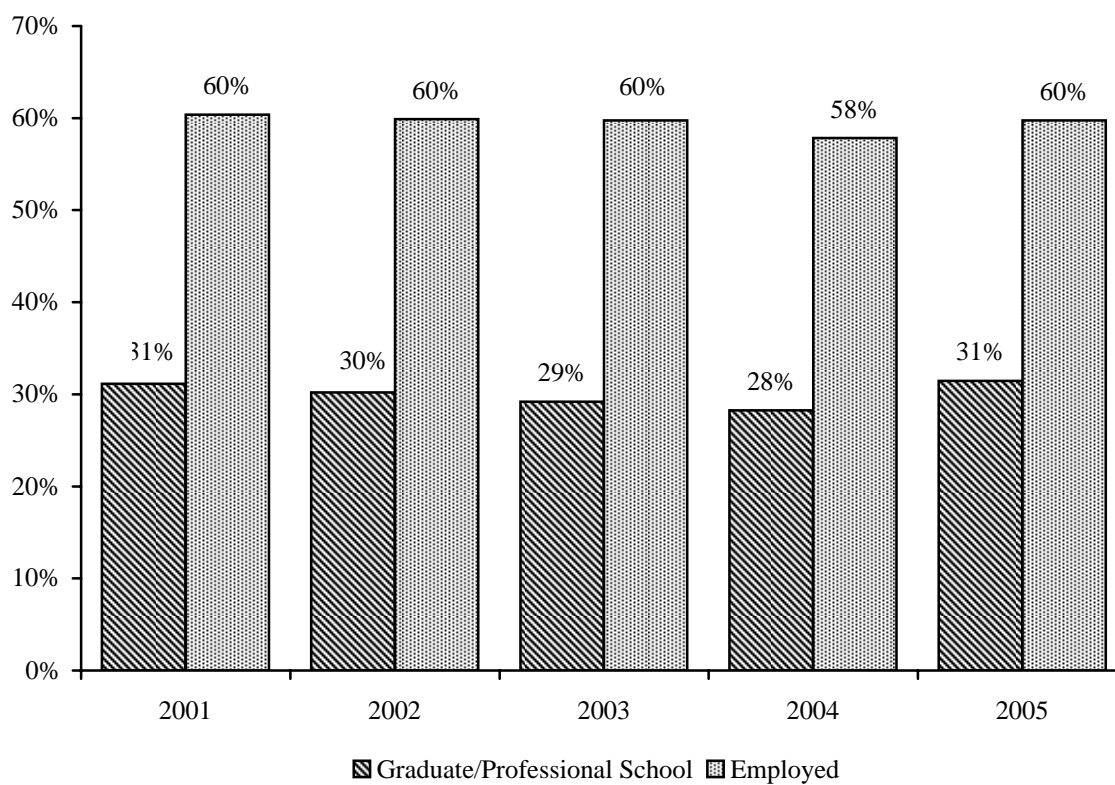
---

### OVERALL PLACEMENT OF CLASS -- 91.2%



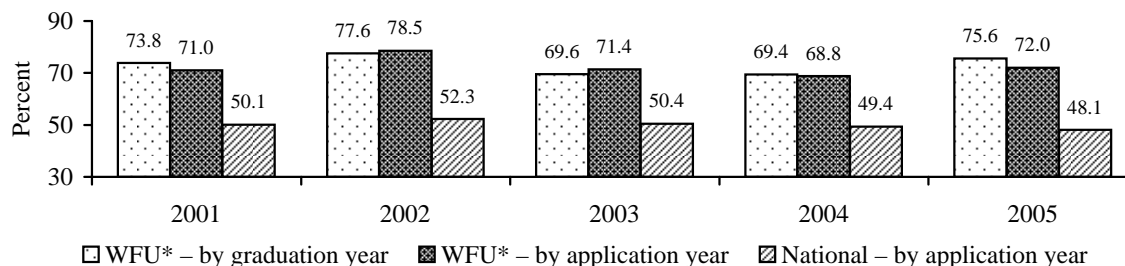
## Placement of Graduating Classes, 2001-2005

---



## Acceptance Rates to Medical School, 2001-2005

Comparison of WFU Success with National Pool Medical School Students -- Percent Accepted



\*Alumni who applied more than once were counted only once.

Note: 202 of 291 applicants (69.4%) from the 2000-2004 graduation classes were accepted to 67 of the 126 U.S. allopathic medical schools. The four North Carolina medical schools accepted 77 students (38.1% of accepted students) as follows: Wake Forest University School of Medicine – 43; Duke University School of Medicine - 8; University of North Carolina at Chapel Hill - 15; and Brody School of Medicine of East Carolina University – 11.

## Medical School Matriculations, 2001-2005

Albany	University of Alabama at Birmingham
Baylor	University of Arkansas
Boston University	University of Chicago - Pritzker
Brody of East Carolina University	University of Cincinnati
Case Western	University of Connecticut
Dartmouth Medical School	University of Florida
Drexel University	University of Hawaii
Duke University	University of Kansas
East Tennessee State University	University of Kentucky
Eastern Virginia Medical School	University of Louisville
Emory University	University of Maryland
Florida State University	University of Massachusetts
Georgetown University	University of Medicine & Dentistry of New Jersey
Harvard University	University of Miami
Indiana University	University of Michigan
Jefferson Medical College	University of Minnesota - Minneapolis
Johns Hopkins University	University of Nebraska
Louisiana State University	University of North Carolina - Chapel Hill
Loyola University	University of Pennsylvania
Marshall University	University of Pittsburgh
Medical College of Georgia	University of Rochester
Medical University of South Carolina	University of South Alabama
Mercer University	University of South Florida
Mount Sinai	University of Southern California
New York Medical College	University of Tennessee
Northeastern Ohio Universities	University of Texas - Galveston
Northwestern University	University of Texas - San Antonio
Ohio State University	University of Texas Southwestern
Penn State University	University of Utah
Ponce	University of Vermont
Saint Louis University	University of Virginia
St. George's University	University of Washington
Stony Brook University	Vanderbilt University
SUNY Upstate	Virginia Commonwealth University
Temple University	Wake Forest University
Texas Tech University	West Virginia University
Tulane University	Wright State University
Uniformed Services University	Yale University
University at Buffalo	

## Applicants to Accredited Law Schools, 2004-2005

	WFU		National	
	Seniors	All	Seniors	All
Number of Applicants	81	216	30,951	95,760
Average LSAT				
Score	158.8	157.9	153.4	152.7
Percentile*	73rd	72nd	63rd	63rd
Undergraduate GPA	3.25	3.16	3.35	3.23
Admitted to ABA Law School(s)				
Number	63	166	20,624	56,134
Percent	78%	77%	67%	59%
Enrolled at a Law School				
Number	53	132	17,707	45,807
Percent	65%	61%	57%	48%
Admissions per Applicant	2.69	2.02	1.93	1.51

\*Estimated

## Law Schools Admitting Wake Forest Applicants, 2004-2005

An asterisk (\*) indicates that a student from Wake Forest enrolled at the school

Albany Law School	Northeastern University*	University of Georgia*
American University*	Northwestern University	University of Houston
Appalachian School of Law*	Nova Southeastern University*	University of Iowa*
Barry University	Ohio Northern University	University of Kentucky*
Baylor University*	Ohio State University*	University of Louisville - Brandeis
Benjamin Cardozo School of Law*	Pace University	University of Maine
Boston College Law School <sup>†</sup>	Pennsylvania State University*	University of Maryland*
Boston University*	Pepperdine University	University of Memphis*
Brooklyn Law School*	Quinnipiac University	University of Miami*
Campbell University School of Law*	Roger Williams University School of Law	University of Michigan
Capital University Law School*	Rutgers University - Camden*	University of Mississippi*
Case Western Reserve University <sup>†</sup>	Rutgers University - Newark	University of Missouri - Kansas City*
Catholic University of America*	Saint John's University School of Law	University of Montana*
Chicago-Kent College of Law*	Saint Louis University*	University of New Mexico*
Cleveland Saint Marshall College*	Saint Mary's University	University of North Carolina*
Columbia University	Saint Thomas University	University of Notre Dame
Cornell University	Samford University - Cumberland Law*	University of Oregon*
De Paul University	Santa Clara University	University of Pennsylvania*
Drake University Law School	Seattle University	University of Pittsburgh
Duke University*	Seton Hall University	University of Richmond*
Emory University*	South Texas College of Law	University of San Diego*
Florida Coastal School of Law*	Southern Methodist University*	University of San Francisco
Florida State University*	Stanford University Law School*	University of South Carolina*
George Mason University*	Stetson University*	University of Southern California
George Washington University	Suffolk University Law School*	University of Tennessee*
Georgetown University	Syracuse University College of Law	University of Texas School of Law
Georgia State University	Temple University	University of Tulsa
Golden Gate University	Texas Southern University	University of Virginia*
Hamline University	Texas Tech University	University of Washington
Harvard Law School	Texas Wesleyan University	University of Wisconsin*
Hofstra University*	Thomas Jefferson School of Law	University of Wyoming
Howard University	Thomas M. Cooley Law School	Valparaiso University
Indiana University - Bloomington	Tulane University*	Vanderbilt University Law School*
Indiana University - Indianapolis*	University of Akron	Vermont Law School*
John Marshall Law School - Chicago	University of Alabama	Villanova University*
Lewis and Clark - Northwestern*	University of Arizona	Wake Forest University School of Law <sup>†</sup>
Louisiana State University	University of Arkansas - Fayetteville	Washburn University*
Loyola University - New Orleans	University of Baltimore*	Washington and Lee University
Marquette University*	University of California - Berkeley	Washington University - Missouri*
McGeorge School of Law	University of Chicago*	Wayne State University*
Mercer University*	University of Cincinnati	Western New England College
Michigan State University	University of Colorado	West Virginia University
New England School of Law	University of Connecticut	Widener University School of Law*
New York Law School	University of Denver College of Law*	Willamette University
New York University School of Law*	University of Detroit - Mercy	William and Mary Law School*
North Carolina Central University*	University of Florida*	William Mitchell College of Law



# Faculty and Staff



## Teaching Faculty\* - Wake Forest University, Fall 2005

	Full-time Teaching		Teaching Administrators/Staff		Part-time Teaching		Total		FTE
	Male	Female	Male	Female	Male	Female	Male	Female	
Arts and Sciences**	368		38		94		500		416.5
	238	130	18	20	45	49	301	199	
Divinity School	6		3		24		33		20.3
	5	1	1	2	17	7	23	10	
Law School	39		5		16		60		47.0
	23	16	2	3	13	3	38	22	
Babcock MBA	36		6		1		43		38.0 ***
	30	6	6	0	0	1	36	7	
Reynolda Campus Total	449		52		135		636		521.8
	296	153	27	25	75	60	398	238	
Medical School	717		18		529		1,264		775.0
	548	169	9	9	420	109	977	287	
University Total	1,166		70		664		1,900		1,296.8
	844	322	36	34	495	169	1375	525	

\* All faculty (including visiting) actually teaching Fall 2005

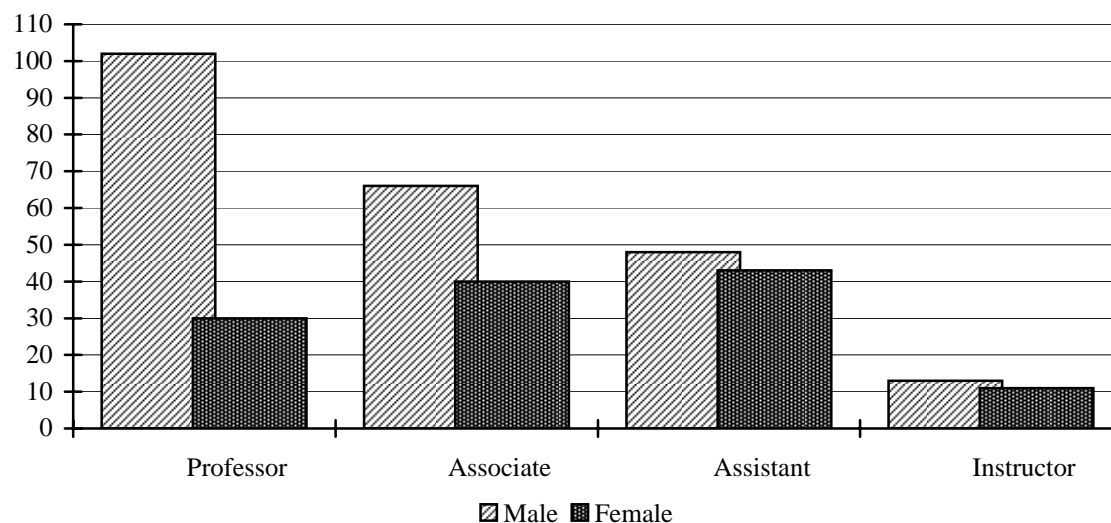
\*\* Includes the Calloway School of Business and Accountancy

\*\*\* FTE estimated by adding full-time faculty to one third of both teaching administrators/staff and part-time faculty

## Full-time Faculty^ by Rank and Gender, Fall 2005

	Male		Female		Total by Rank	
	Number	%	Number	%	Number	%
Professor	102	42%	30	23%	132	35%
Associate	66	27%	40	31%	106	28%
Assistant	48	20%	43	33%	91	24%
Instructor	13	5%	11	8%	24	6%
Lecturer/Other	13	5%	6	5%	19	5%
Total	242	100%	130	100%	372	100%

^Includes those faculty of the College of Arts and Sciences and the Calloway School of Business and Accountancy who are "Full-time Instructional Faculty" as defined by the AAUP Faculty Compensation Survey



## Full-time Faculty^ by Ethnicity - Wake Forest University, Fall 2005

	Black		Amer. Indian		Asian		Hispanic		White		Other/ Unknown		Total
	#	%	#	%	#	%	#	%	#	%	#	%	
Arts and Sciences*	12	3.2%	0	0.0%	15	4.0%	16	4.3%	329	88.4%	0	0.0%	372
Divinity School	0	0.0%	0	0.0%	0	0.0%	0	0.0%	5	100.0%	0	0.0%	5
Law School	4	10.8%	0	0.0%	0	0.0%	0	0.0%	33	89.2%	0	0.0%	37
Babcock MBA	1	2.8%	0	0.0%	3	8.3%	0	0.0%	32	88.9%	0	0.0%	36
Medical School**	20	2.3%	3	0.4%	83	9.7%	18	2.1%	722	84.4%	9	1.1%	855
<b>Total</b>	<b>37</b>	<b>2.8%</b>	<b>3</b>	<b>0.2%</b>	<b>101</b>	<b>7.7%</b>	<b>34</b>	<b>2.6%</b>	<b>1,121</b>	<b>85.9%</b>	<b>9</b>	<b>3.1%</b>	<b>1,305</b>

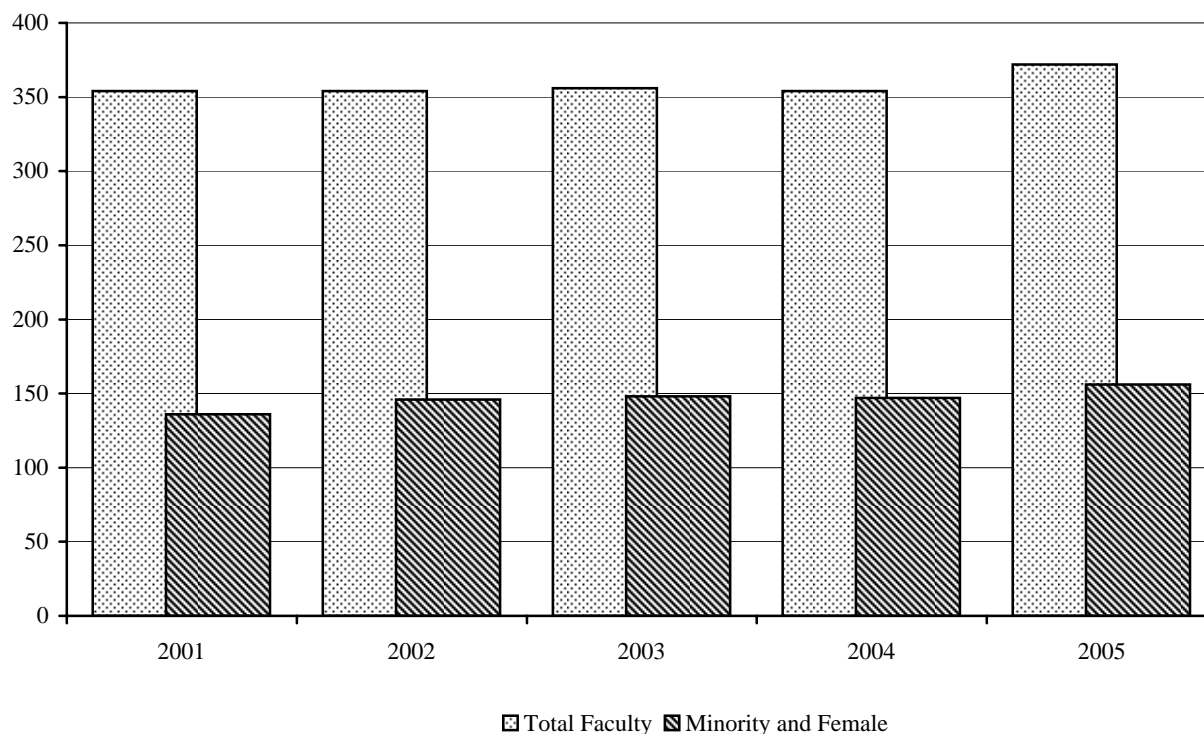
^"Full-time Instructional Faculty" as defined by the AAUP Faculty Compensation Survey (excludes medical school faculty)

\* Includes the Calloway School of Business and Accountancy

\*\* Includes administrative faculty

## Percentage of Full-time Minority and Female Faculty^, Arts and Sciences\*, Fall 2001-2005

Fall	Total Faculty	Number of Minority	% Minority	Number of Female	% Female	Total Percentage of Minority or Female
2001	354	41	11.6%	125(19 minority)	35%	42%
2002	354	44	12.4%	128(19 minority)	36%	43%
2003	356	47	13.2%	128(17 minority)	36%	44%
2004	354	46	13.0%	128(18 minority)	36%	44%
2005	372	43	11.6%	130(15 minority)	35%	42%



^"Full-time Instructional Faculty" as defined by the AAUP Faculty Compensation Survey

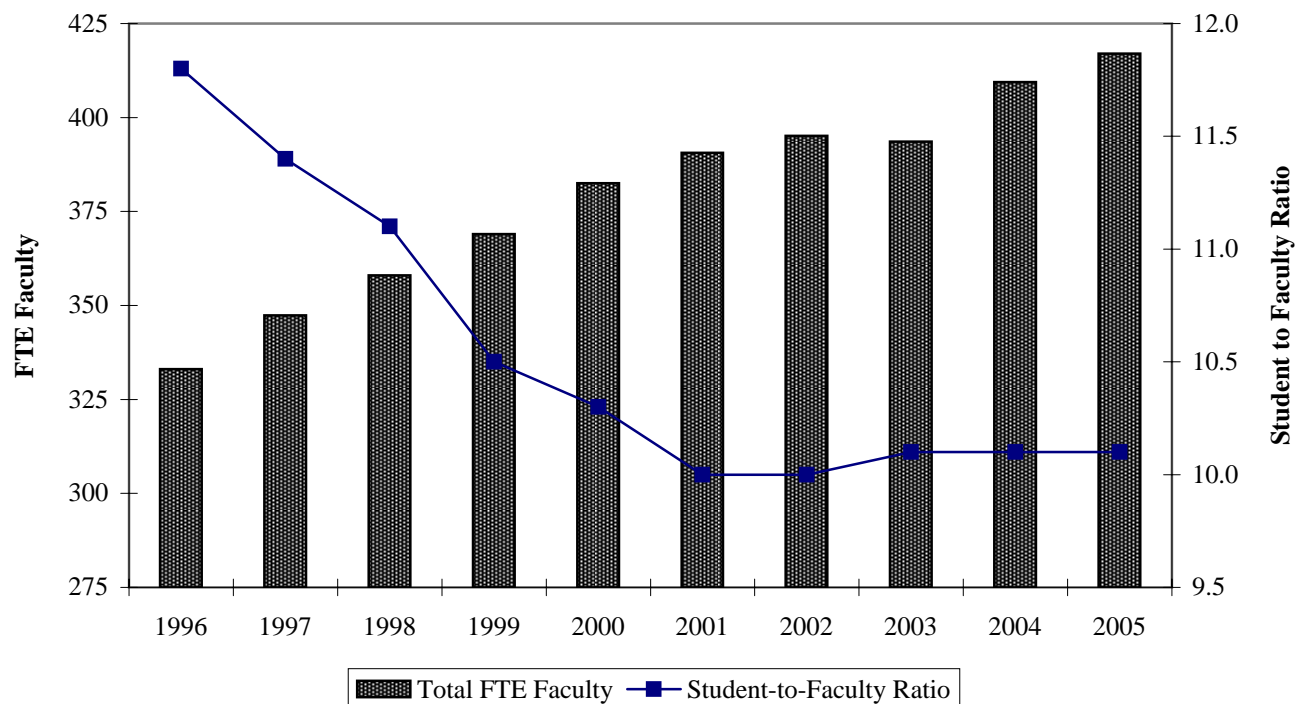
\* Includes the Calloway School of Business and Accountancy

## Teaching Equivalents and Student-to-Faculty Ratio\*, Fall 1996-2005

	1996	1997	1998	1999	2000	2001	2002	2003	2004	2005
Full-time Teaching Faculty	308	315	324	333	355	357	362	362	363	368
FTE	308	315	324	333	355	357	362	362	363	368
Part-time Teaching Faculty**	39	58	44	79	74	84	75	88	82	94
FTE	19.2	26.2	30.3	31.8	23.3	28.2	26.2	28.3	33.9	37.6
Teaching Administrators/Staff	13	13	11	12	11	14	16	11	34	38
FTE	5.8	6.3	3.8	4.2	4.2	5.4	6.9	3.3	12.6	10.9
Total Teaching Faculty/FTE	360/333	386/347	379/358	424/369	440/383	455/391	453/395	461/394	479/409	500/417
Student-to-Faculty Ratio	11.8	11.4	11.1	10.5	10.3	10.0	10.0	10.1	10.1	10.1

\*Arts and Sciences and the Calloway School of Business and Accountancy

\*\* Includes part-time faculty and part-time instructors, fee basis only for years 1999-2005



## Percentage of Part-time Faculty\*, Fall 2001-2005

	2001	2002	2003	2004	2005
Total Number of Full-time Faculty and Teaching Administrators/Staff	371	378	373	397	406
Total Number of Part-time Faculty**	84	75	88	82	94
Percentage of Part-time Faculty	18.5%	16.6%	19.1%	17.1%	18.8%
Percentage of Part-time FTE Faculty	7.2%	6.6%	7.2%	8.3%	9.0%

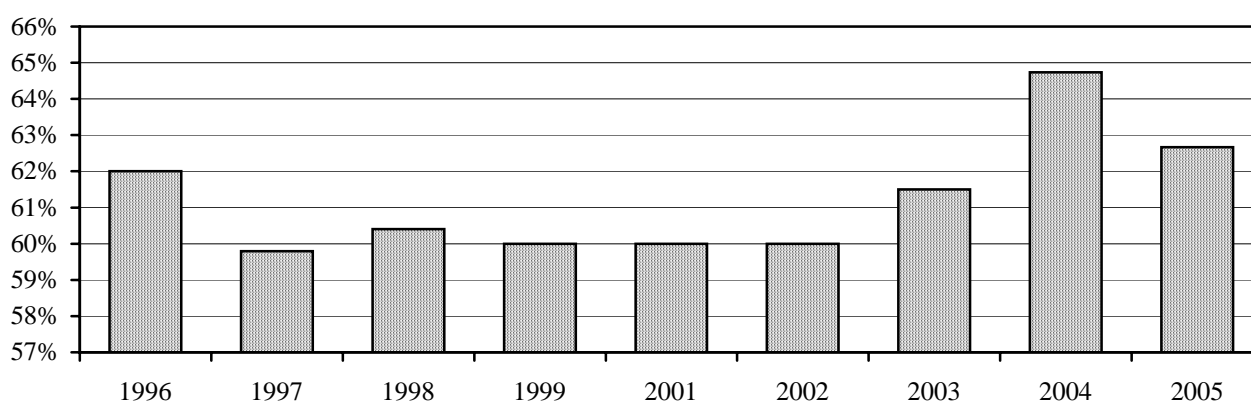
\*Faculty actually teaching in the College of Arts and Sciences and the Calloway School of Business and Accountancy

\*\* Includes part-time faculty and part-time instructors, fee basis only

### Tenure of Full-time Instructional Faculty^ - Reynolda Campus, Fall 2005

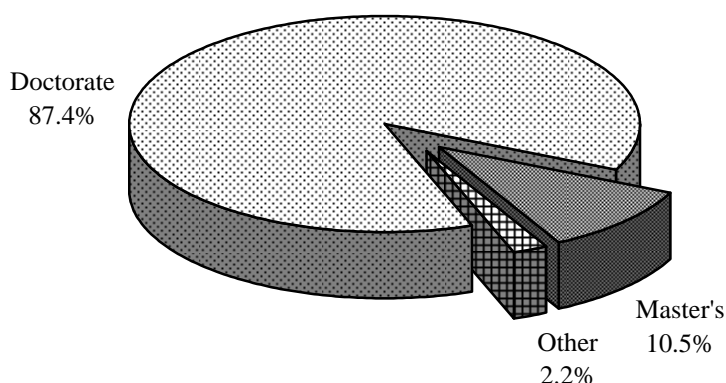
Rank	Tenured		Tenure Track		Non-Tenure Track		Total		% Tenured	
	Male	Female	Male	Female	Male	Female	Male	Female	Male	Female
Professor	127	38	1	0	5	1	133	39	95%	97%
Associate	76	40	6	1	1	1	83	42	92%	95%
Assistant	0	0	37	33	16	15	53	48	0%	0%
Instructor	0	0	1	0	12	11	13	11	0%	0%
Lecturer	1	0	0	0	9	6	10	6	10%	0%
Other rank	0	0	0	0	5	7	5	7	0%	0%
Total	204	78	45	34	48	41	297	153	69%	51%

### Percentage of Full-time Instructional Faculty^ Tenured - Reynolda Campus, Fall 1996-2005



### Highest Degree Earned for Full-Time Instructional Faculty^\*, Fall 2005

Degree	Male		Female		Total Faculty	
	#	%	#	%	#	%
Doctorate	215	88.8%	110	84.6%	325	87.4%
Master's	23	9.5%	16	12.3%	39	10.5%
Other	4	1.7%	4	3.1%	8	2.2%
Total	242		130		372	100%



^"Full-time Instructional Faculty" as defined by the AAUP Faculty Compensation Survey

\*Arts and Sciences and the Calloway School of Business and Accountancy

### Tenure of Full-time Instructional Faculty\* - School of Medicine, Fall 2005

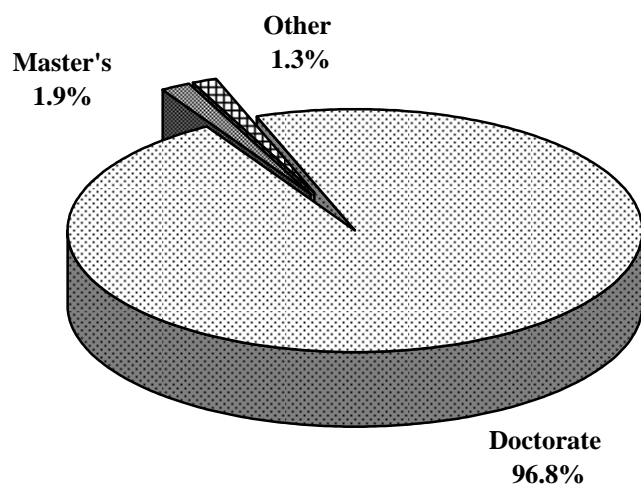
Rank	Tenured		Tenure Track		Non-Tenure Track		Total		% Tenured	
	Male	Female	Male	Female	Male	Female	Male	Female	Male	Female
Professor	130	21	69	11	3	1	202	33	64%	64%
Associate	14	2	140	40	11	5	165	47	8%	4%
Assistant	0	0	172	83	37	25	209	108	0%	0%
Instructor	0	0	30	15	23	23	53	38	0%	0%
Other rank	0	0	0	0	0	0	0	0	0%	0%
Total	144	23	411	149	74	54	629	226	23%	10%

\* Source: Office of the Dean

### Highest Degree Earned for Full-Time Instructional Faculty\* - School of Medicine, Fall 2005

Degree	Male		Female		Total Faculty	
	#	%	#	%	#	%
Doctorate	616	97.9%	212	93.8%	828	96.8%
Master's	6	1.0%	10	4.4%	16	1.9%
Other	7	1.1%	4	1.8%	11	1.3%
Total	629		226		855	100%

\* Source: Office of the Dean

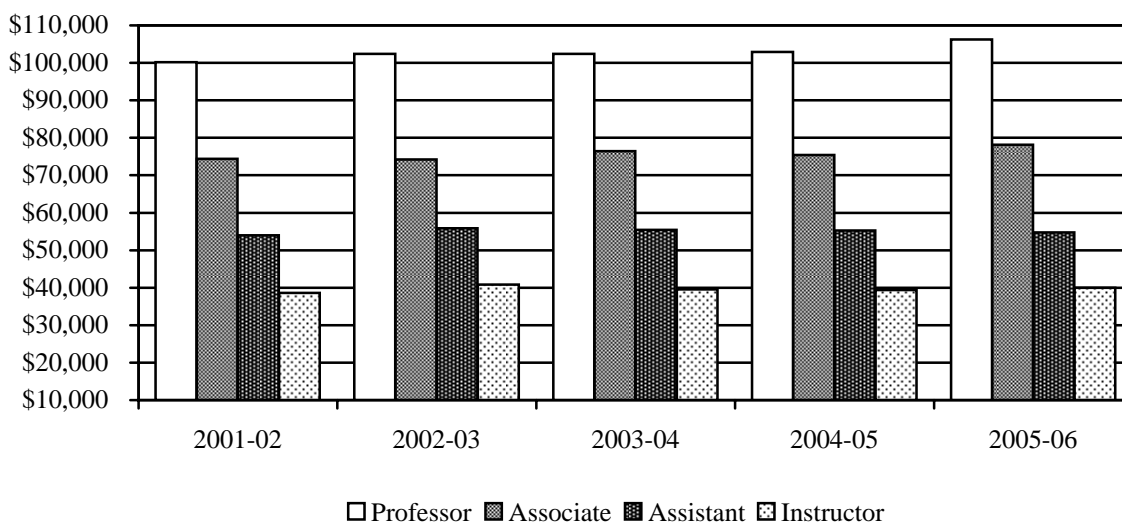


**\*Average Full-time Faculty Salary by Rank - Reynolda Campus**

Rank	2001-02	2002-03	2003-04	2004-05	2005-06
Professor	\$100,195	\$102,408	\$102,383	\$102,879	\$106,229
Associate	\$74,400	\$74,187	\$76,439	\$75,455	\$78,151
Assistant	\$53,958	\$55,824	\$55,441	\$55,231	\$54,787
Instructor	\$38,640	\$40,816	\$39,509	\$39,342	\$39,966
<b>**All Ranks</b>	<b>\$75,590</b>	<b>\$76,684</b>	<b>\$77,494</b>	<b>\$78,706</b>	<b>\$80,023</b>

\* Sources: *ACADEME* and Office of Human Resources

\*\* Average salary of all ranks, *including lecturers and no rank*



**Average Full-time Faculty Salaries - College and Calloway, 2005-2006**

Division	Professor	Associate	Assistant	Instructor
Humanities and Fine Arts	\$91,775	\$65,931	\$44,284	\$37,994
Social Sciences and SBA^	\$98,037	\$79,151	\$52,617	#
Natural Sciences and Mathematics	\$96,568	\$71,887	\$52,619	\$48,572
<b>All Divisions</b>	<b>\$95,672</b>	<b>\$72,586</b>	<b>\$49,412</b>	<b>\$39,966</b>

#Average salary not published because number of faculty is fewer than six.

**NOTE:**

**Humanities and Fine Arts include:**

Art  
Classical Languages  
East Asian Languages and Cultures  
English  
German and Russian  
Humanities  
Music  
Philosophy  
Religion  
Romance Languages  
Theatre and Dance  
Certain Interdepartmental  
and Chaired Professors  
Women's Studies

**Social Sciences and SBA^ include:**

Anthropology  
Communication  
Counseling  
Economics  
Education  
History  
Political Science  
Psychology  
Sociology  
^Calloway School of Business and Accountancy

**Natural Sciences and Mathematics include:**

Biology  
Chemistry  
Computer Science  
Health and Exercise Science  
Mathematics  
Physics

### Full-time Staff by Category, Gender, and Ethnicity - Reynolda Campus, 2005

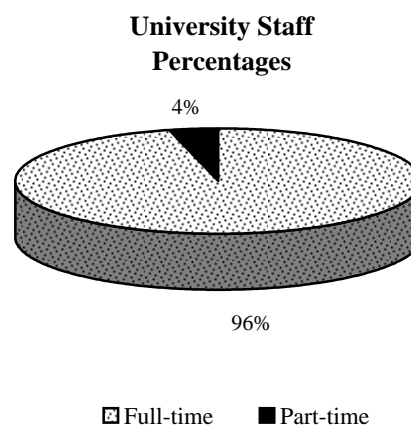
Category	White		Black		Hispanic		Asian		Native American		Unknown		Total
	M	F	M	F	M	F	M	F	M	F	M	F	
Executive / Administrative	60	36	4	2	0	0	1	0	0	1	0	0	104
Professional / Non-Faculty	210	243	19	19	3	0	4	7	1	0	13	5	524
Secretarial / Clerical	18	206	2	26	0	3	0	3	0	1	0	0	259
Technical / Paraprofessional	28	31	5	2	1	0	0	1	0	0	0	0	68
Skilled Craft	52	1	4	0	1	0	0	0	1	0	0	0	59
Service Maintenance	87	22	44	42	5	15	1	0	0	0	0	0	216
<b>Total</b>	<b>455</b>	<b>539</b>	<b>78</b>	<b>91</b>	<b>10</b>	<b>18</b>	<b>6</b>	<b>11</b>	<b>2</b>	<b>2</b>	<b>13</b>	<b>5</b>	<b>1,230</b>

### Full-time Staff by Category, Gender, and Ethnicity - Bowman Gray Campus, 2005

Category	White		Black		Hispanic		Asian		Native American		Unknown		Total
	M	F	M	F	M	F	M	F	M	F	M	F	
Executive / Administrative	89	243	5	21	0	0	0	3	0	0	0	0	361
Professional / Non-Faculty	100	431	7	26	8	8	50	32	0	2	2	0	666
Secretarial / Clerical	27	899	11	90	0	6	1	9	0	4	0	1	1,048
Technical / Paraprofessional	158	295	11	38	3	6	13	29	0	3	0	2	558
Skilled Craft	26	4	3	1	1	0	0	0	0	0	0	0	35
Sales	5	7	0	1	0	0	0	0	0	0	0	0	13
Service Maintenance	10	49	8	27	1	1	0	0	0	1	0	0	97
Laborers	15	23	4	0	1	0	0	0	0	0	0	0	43
Operators	3	2	1	0	0	0	0	0	0	0	0	0	6
<b>Total</b>	<b>433</b>	<b>1,953</b>	<b>50</b>	<b>204</b>	<b>14</b>	<b>21</b>	<b>64</b>	<b>73</b>	<b>0</b>	<b>10</b>	<b>2</b>	<b>3</b>	<b>2,827</b>

### Full-time vs. Part-time Staff 2005

	Full-time	Part-time	Total
Reynolda Campus	1,230	31	1,261
Bowman Gray Campus	2,827	131	2,958
<b>Total</b>	<b>4,057</b>	<b>162</b>	<b>4,219</b>

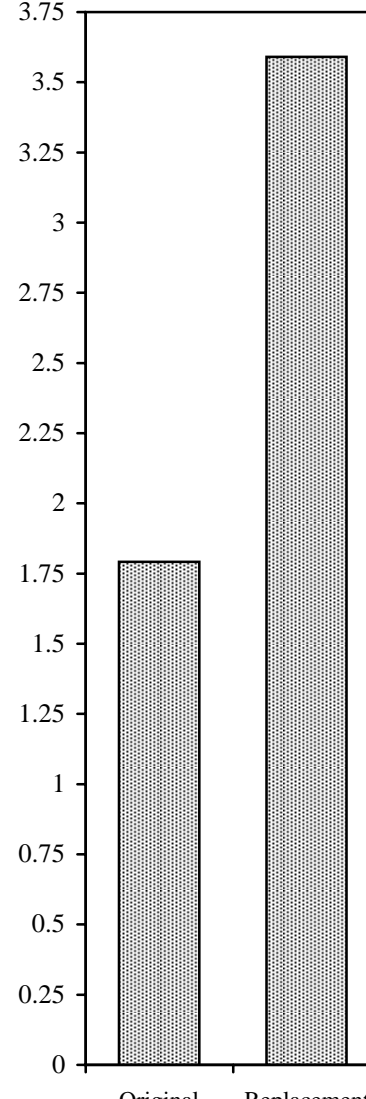




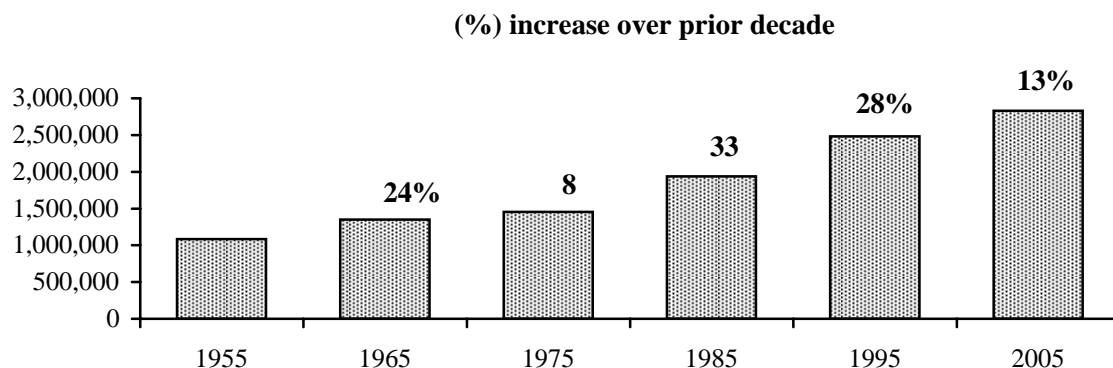
# Facilities



## Main Facilities Reynolda Campus - Building Profiles

		Date	Gross Sq. ft.	Assignable Sq. ft.	
<b>Academic</b>	Calloway Center (Kirby & Manch	1969	89,185	54,394	<b>Total Cost of Buildings Listed (x \$100,000,000)</b> 
	Carswell Hall	1955	58,815	35,845	
	Greene Hall	1999	80,000	47,034	
	Museum of Anthropology	1987	7,055	5,332	
	Olin Physical Laboratory	1989	31,837	20,751	
	Reynolds Gymnasium	1955	151,569	98,997	
	Salem Hall	1955	55,083	34,849	
	Scales Fine Art Center	1976	143,346	76,456	
	Tribble Hall	1963	80,168	46,311	
	Wingate Hall & Wait Chapel	1955	72,770	41,668	
	Winston Hall	1961	100,460	54,640	
	Worrell Professional Center	1993	178,000	115,700	
	Z. Smith Reynolds Library	1955	187,659	129,084	
<b>Support</b>	Starling Hall/Welcome Center	1956	8,928	3,686	
	Manchester Athletic Center	1978	65,393	45,348	
	Benson Center	1990	100,422	53,869	
	Central Heating Plant	1955	15,466	6,578	
	Information Systems	1998	71,000	52,830	
	Landscaping Building	1982	5,709	4,883	
	Maintenance Garage Shop	1956	9,773	9,141	
	Miller Center	2001	64,845	38,337	
	H.S. Moore Bldg.-Facilities Mgmt	1956	24,162	19,693	
	President's House	1929	14,399	10,800	
	Bookstore Warehouse/Photographer	1984	6,000	5,372	
	Reynolda Hall	1955	135,799	81,408	
	WFDD Radio	1920	3,769	2,638	
<b>Residential (on Campus)</b>	Babcock	1961	53,027	33,408	
	Bostwick	1955	43,568	34,868	
	Collins	1985	49,601	33,001	
	Davis	1955	69,959	47,546	
	Efird	1955	15,476	11,453	
	Huffman	1955	15,476	11,574	
	Johnson	1955	43,392	28,853	
	Kitchin	1955	66,373	44,225	
	Luter	1971	68,175	43,874	
	Martin	1994	28,754	16,590	
	Palmer	1982	12,942	8,317	
	Piccolo	1982	12,942	7,980	
	Polo	1998	78,562	43,759	
	Poteat	1955	52,271	33,815	
	Student Apartments	1956	28,012	23,600	
	Taylor	1955	68,680	46,346	
	Townhouses	1976	7,897	5,803	

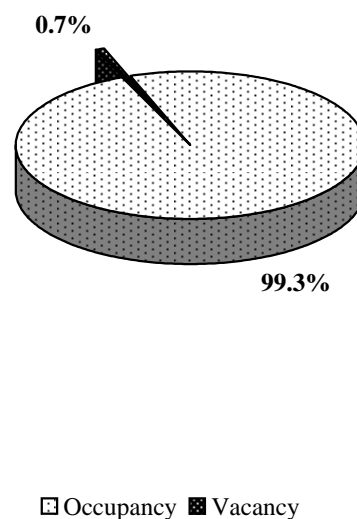
## Gross Square Feet of Reynolda Campus Facilities by Decade



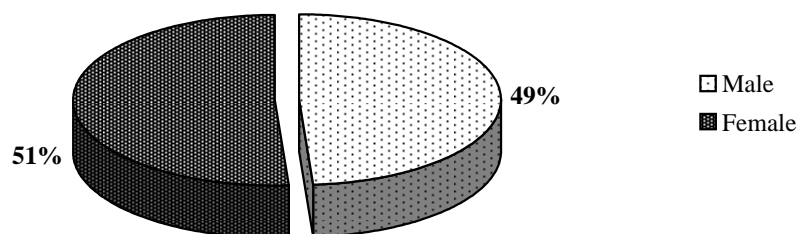
## Student Housing Utilization, Fall 2005

Student Housing	Capacity	Occupancy
Babcock (Coed)	250	250
Bostwick (Coed)	202	200
Collins (Coed)	233	233
Davis (Coed)	295	295
Efird (Coed)	92	92
Huffman Theme (Coed)	80	79
Johnson Substance Free (Coed)	202	198
Kitchin (Coed)	277	277
Luter (Coed)	288	288
Martin (Coed)	95	95
Palmer (Coed)	56	55
Piccolo (Coed)	62	62
Polo (Coed)	194	194
Poteat (Coed)	239	239
Rosedale, Theme Wesley (Coed)	14	14
Student Apartments (Coed)	110	110
Taylor (Coed)	248	243
Theme House - Anthony Aston (Coed)	13	13
Theme House - Technology Quarters (Male)	10	10
Theme House - Nia (Female)	7	7
Theme House - Environmental (Coed)	10	10
Townhouses (Female)	31	31
1125 Polo Rd - International (Male)	4	4
Theme House - Crew (Coed)	12	12
<b>Total</b>	<b>3,024</b>	<b>3,011</b>

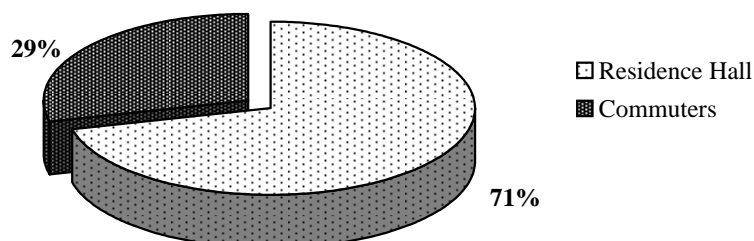
**On-Campus Occupancy Rate,  
Fall 2005**



**On-Campus Housing Utilization by Gender, Fall 2005**



**Distribution of Fall 2005 Undergraduate Enrollment by Type of Housing**



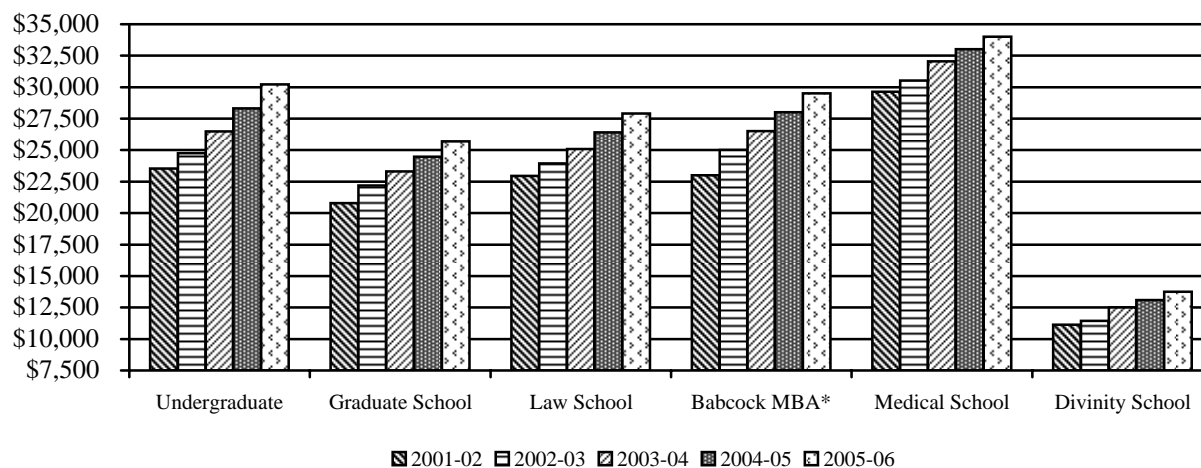
# Finances



## First-year Student Tuition and Fees

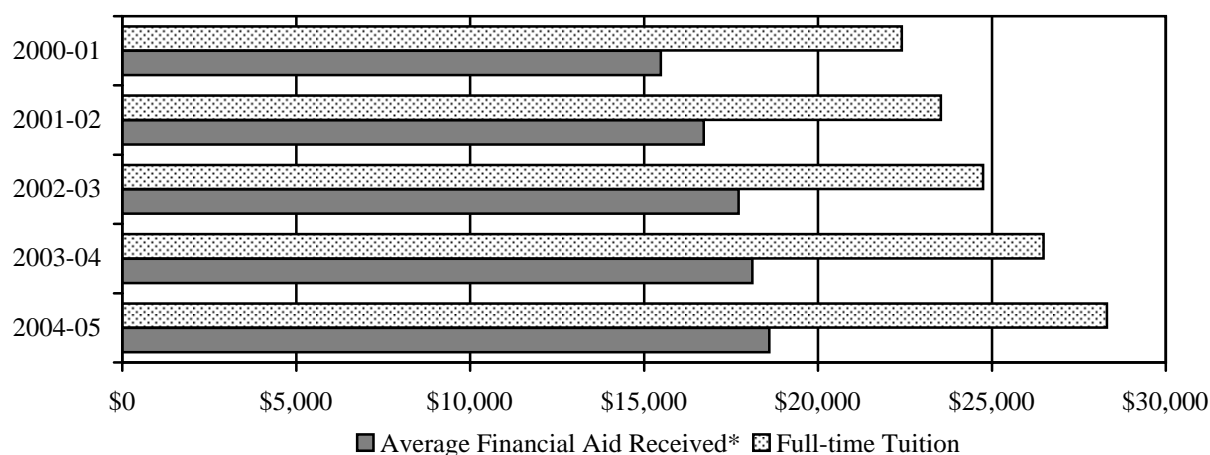
School	2001-02	2002-03	2003-04	2004-05	2005-06
Undergraduate	\$23,530	\$24,750	\$26,490	\$28,310	\$30,210
Graduate School	\$20,790	\$22,200	\$23,310	\$24,475	\$25,700
Law School	\$22,950	\$23,950	\$25,100	\$26,400	\$27,900
Babcock MBA*	\$23,000	\$25,000	\$26,500	\$28,000	\$29,500
Medical School	\$29,640	\$30,529	\$32,056	\$33,016	\$34,006
Divinity School	\$11,130	\$11,450	\$12,500	\$13,100	\$13,755

\* Full-time Program first-year



## Undergraduate Tuition and Financial Aid

Year	Average Financial Aid Received*	Full-time Tuition and Fees	Percentage
2000-01	\$15,484	\$22,410	69.1%
2001-02	\$16,719	\$23,530	69.1%
2002-03	\$17,717	\$24,750	71.6%
2003-04	\$18,111	\$26,490	68.4%
2004-05	\$18,603	\$28,310	65.7%



\* Average amount of aid received from all sources (excluding parent loans) through the Office of Financial Aid.

## Annual Costs\* for "Most Competitive" Private Institutions, 2005-2006

### ***Barron's Profile of American Colleges\*\****

<b>Private Institution **</b>	<b>Room/Board</b>	<b>Tuition/Fees</b>	<b>Comprehensive Fees</b>
George Washington University, DC	\$10,470	\$34,030	\$44,500
New York University, NY	\$11,790	\$31,690	\$43,480
Georgetown University, DC	\$10,739	\$32,199	\$42,938
Columbia University, NY	\$9,340	\$33,246	\$42,586
Boston College, MA	\$10,845	\$31,438	\$42,283
Harvey Mudd College, CA	\$10,412	\$31,738	\$42,150
Wesleyan University, CT	\$8,932	\$33,190	\$42,122
Middlebury College, VT	n/a	n/a	\$42,120
Washington University in St. Louis, MO	\$10,064	\$32,042	\$42,106
Bates College, ME	n/a	n/a	\$42,100
Tufts University, MA	\$9,397	\$32,621	\$42,018
Vanderbilt University, TN	\$10,286	\$31,700	\$41,986
Connecticut College, CT	n/a	n/a	\$41,975
Massachusetts Institute of Technology, MA	\$9,500	\$32,300	\$41,800
Colby College, ME	n/a	n/a	\$41,770
University of Pennsylvania, PA	\$9,402	\$32,364	\$41,766
Brown University, RI	\$8,769	\$32,974	\$41,743
University of Chicago, IL	\$10,104	\$31,629	\$41,733
Cornell University, NY	\$10,250	\$31,467	\$41,717
Vassar College, NY	\$7,900	\$33,800	\$41,700
Harvard University, MA	\$9,578	\$32,097	\$41,675
Northwestern University, IL	\$9,873	\$31,789	\$41,662
Hamilton College, NY	\$8,310	\$33,350	\$41,660
Bowdoin College, ME	\$8,670	\$32,990	\$41,660
Amherst College, MA	\$8,585	\$33,035	\$41,620
University of Southern California, CA	\$9,610	\$32,008	\$41,618
Haverford College, PA	\$9,840	\$31,760	\$41,600
Brandeis University, MA	\$9,050	\$32,500	\$41,550
Johns Hopkins University, MD	\$9,924	\$31,620	\$41,544
Dartmouth College, NH	\$9,390	\$31,965	\$41,355
Swarthmore College, PA	\$9,764	\$31,516	\$41,280
Duke University, NC	\$8,830	\$32,410	\$41,240
Colgate University, NY	\$8,065	\$33,105	\$41,170
Stanford University, CA	\$9,932	\$31,200	\$41,132
Reed College, OR	\$8,516	\$32,590	\$41,106
Claremont McKenna College, CA	\$10,270	\$30,800	\$41,070
Wellesley College, MA	\$9,682	\$31,348	\$41,030
Yale University, CT	\$9,540	\$31,460	\$41,000
Oberlin College, OH	\$8,180	\$32,724	\$40,904
Pomona College, CA	\$10,851	\$29,923	\$40,774
College of the Holy Cross, MA	\$9,220	\$31,444	\$40,664
Carnegie Mellon University, PA	\$8,606	\$32,044	\$40,650
Emory University, GA	\$9,752	\$30,794	\$40,546
University of Richmond, VA	\$5,660	\$34,850	\$40,510
Carleton College, MN	\$7,818	\$32,649	\$40,467
Williams College, MA	\$8,550	\$31,760	\$40,310
Princeton University, NJ	\$8,763	\$31,450	\$40,213
University of Notre Dame, IN	\$8,010	\$31,542	\$39,552
Lafayette College, PA	\$9,285	\$29,982	\$39,267
<b>Wake Forest University, NC</b>	<b>\$8,500</b>	<b>\$30,210</b>	<b>\$38,710</b>
Case Western Reserve, University, OH	\$8,482	\$28,678	\$37,160
Davidson College, NC	\$8,158	\$28,667	\$36,825
Macalester College, MN	\$7,858	\$28,642	\$36,500
California Institute of Technology, CA	\$8,814	\$27,309	\$36,123
Washington and Lee University, VA	\$7,225	\$28,635	\$35,860
Rice University, TX	\$8,980	\$20,160	\$29,140

\*Source: US NEWS AND WORLD REPORT America's Best Colleges 2006

\*\*Private specialty schools (art and engineering) are not included

## Undergraduate Student Financial Aid Programs, 2000-2005

Type of Aid	2000-01	2001-02	2002-03	2003-04	2004-05
<b>Institutional Aid</b>					
Athletic	\$5,872,655	\$6,350,145	\$6,354,006	\$7,989,559	\$8,187,431
Non-Athletic*	\$17,296,821	\$19,197,630	\$21,033,958	\$21,906,735	\$23,521,535
Total Institutional and Other*	\$23,169,476	\$25,547,775	\$27,387,964	\$29,896,294	\$31,708,966
<b>Private Aid</b>					
Grants	\$2,930,391	\$3,240,879	\$3,517,633	\$3,290,533	\$3,447,492
Loans	\$2,034,051	\$2,296,674	\$2,356,203	\$3,149,602	\$2,915,185
Total Private	\$4,964,442	\$5,537,553	\$5,873,836	\$6,440,135	\$6,362,677
<b>Federal</b>					
PELL	\$575,373	\$701,335	\$796,011	\$862,662	\$842,010
SEOG	\$658,095	\$550,727	\$560,628	\$651,354	\$641,638
Perkins	\$2,232,442	\$2,983,762	\$3,385,491	\$3,475,568	\$3,757,100
Work Study	\$728,189	\$528,038	\$545,402	\$601,145	\$620,375
Stafford#	\$4,505,506	\$4,314,617	\$4,919,554	\$5,412,500	\$5,643,488
Total Federal###	\$12,884,200	\$12,845,616	\$14,962,542	\$17,400,098	\$19,641,362
<b>State</b>					
NCLTG	\$1,773,900	\$1,743,750	\$1,813,986	\$1,908,900	\$1,939,950
NC Scholarship	\$1,130,750	\$1,125,575	\$1,188,551	\$1,194,325	\$1,222,375
Incentive Grant**	\$18,750	\$8,400	\$7,700	\$13,650	\$7,000
Total State###	\$2,938,325	\$2,893,825	\$3,022,197	\$3,133,135	\$3,184,125
<b>Total Financial Aid</b>	<b>\$43,956,443</b>	<b>\$46,824,769</b>	<b>\$51,246,539</b>	<b>\$56,869,662</b>	<b>\$60,897,130</b>

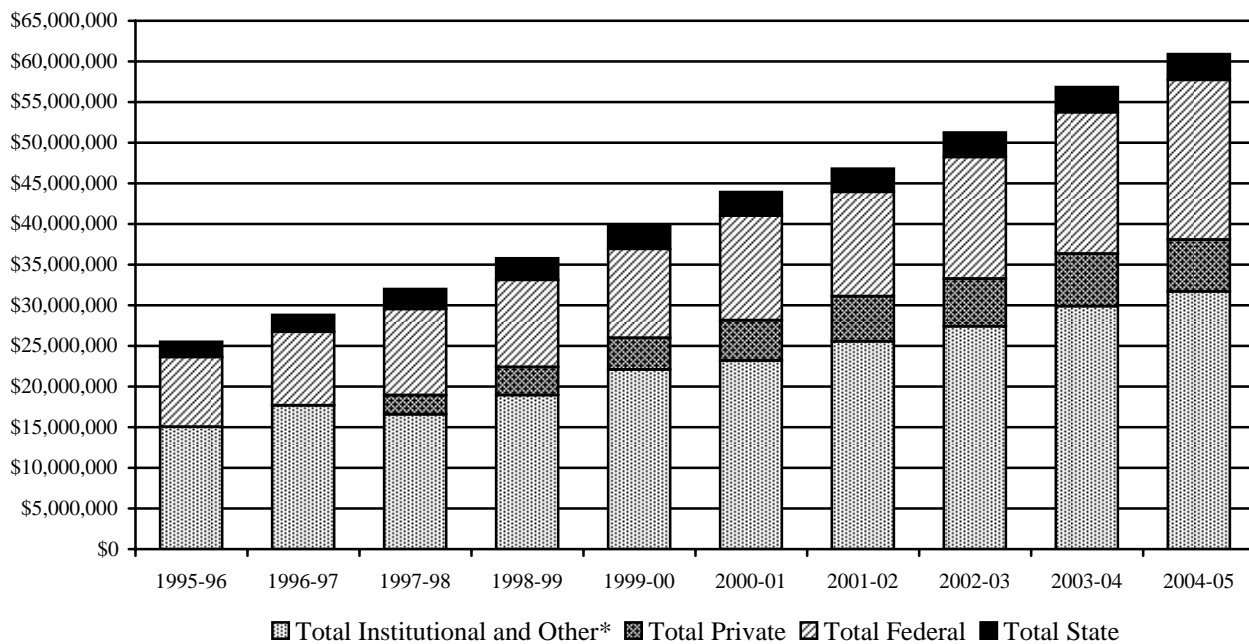
\* Includes tuition concessions

\*\* Federal and State share

# This total includes both subsidized and unsubsidized loans.

## This total includes Federal grants and loans not listed in the above categories. The amount not listed for 2004-05 is \$8,136,751.

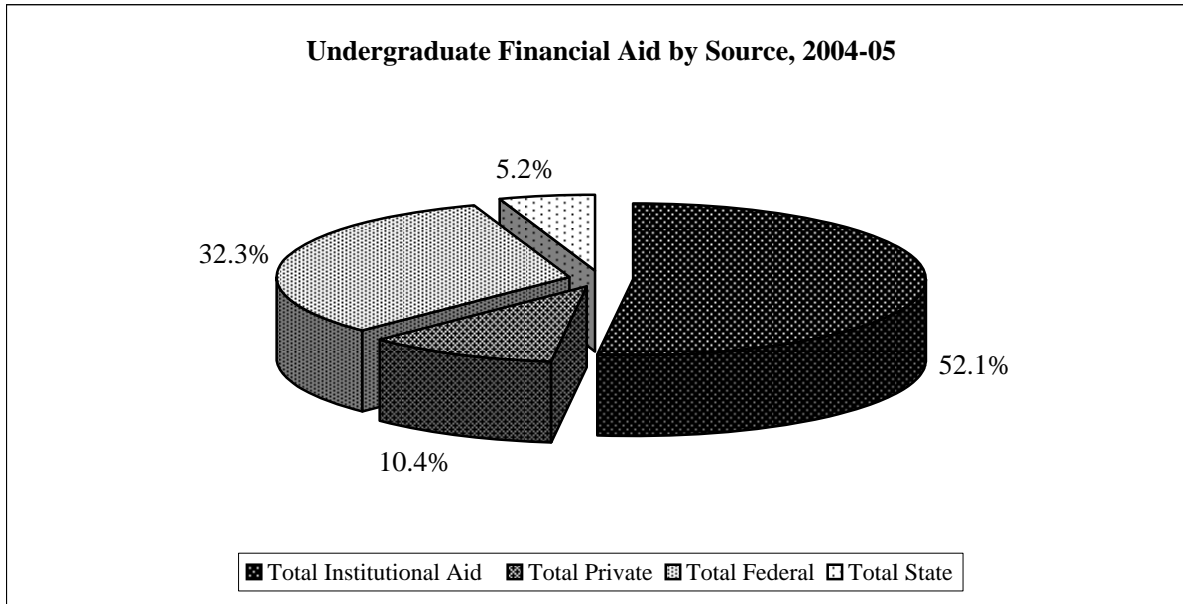
### This total includes State grants and loans not listed in the above categories. The amount not listed for 2004-05 is \$14,800.



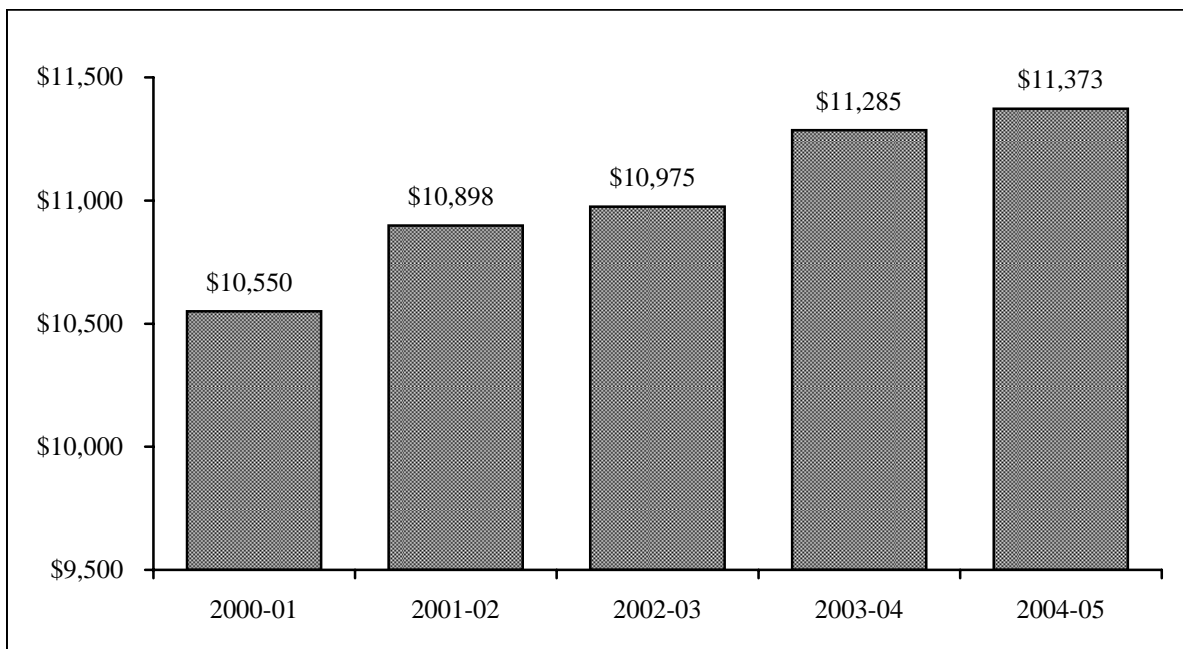
Note: Private aid is included as part of institutional aid from 1992-93 through 1996-97.

## Undergraduate Financial Aid by Source, 2005-2006

Type of Aid	Total Amount	% of Total
Total Institutional Aid	\$31,708,966	52.1%
Total Private	\$6,362,677	10.4%
Total Federal	\$19,641,362	32.3%
Total State	\$3,184,125	5.2%
<b>Total</b>	<b>\$60,897,130</b>	<b>100.0%</b>



## Average Instructional Dollars Expended Per Undergraduate Student, 2001-2005

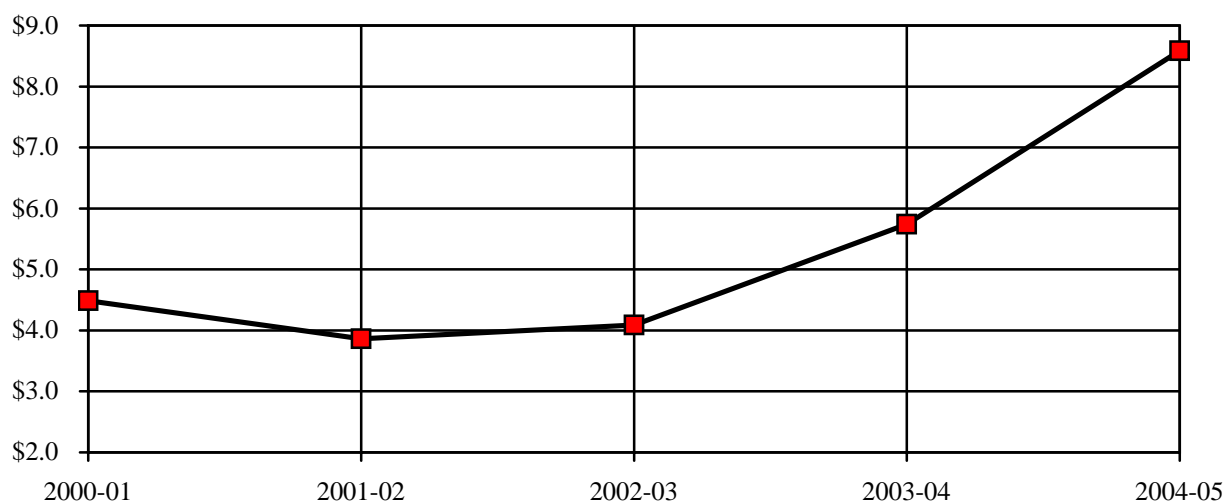




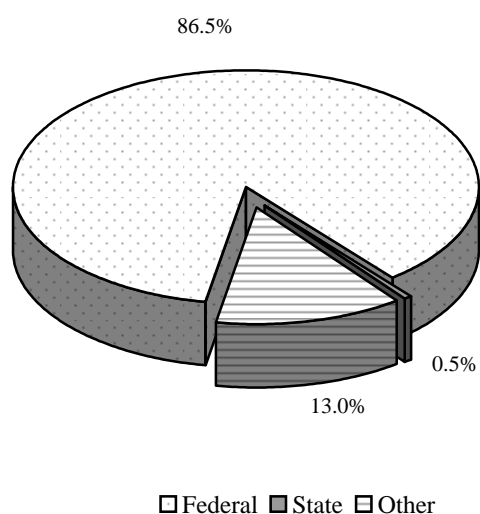
## Research Grants by Fund Source, Reynolda Campus, 2001-2005

Fund Source	2000-01	2001-02	2002-03	2003-04	2004-05
Federal	\$3,036,514	\$3,233,141	\$3,334,303	\$5,513,502	\$7,428,944
State	\$573,189	\$49,119	\$221,112	\$0	\$42,692
Other	\$877,070	\$579,351	\$530,418	\$229,529	\$1,115,222
<b>Total</b>	<b>\$4,486,773</b>	<b>\$3,861,611</b>	<b>\$4,085,833</b>	<b>\$5,743,031</b>	<b>\$8,586,858</b>

Total Research Grants Received (x \$1,000,000)



Research Grants 2004-05

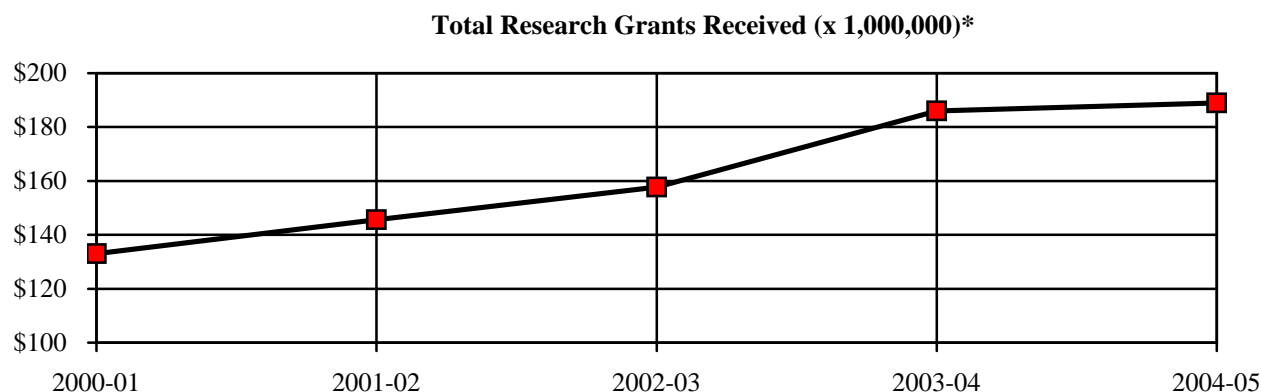


## Research Grants by Discipline

Anthropology (18)	\$307,692
Babcock (1)	\$145,846
Biology (9)	\$454,370
Calloway (1)	\$575,000
Chemistry (16)	\$1,753,004
Communication (6)	\$304,885
Computer Science (6.5)	\$580,918
Economics (1)	\$27,777
Graduate Studies (1)	\$40,500
Health and Exercise Science (10)	\$1,062,613
Law School (2)	\$12,000
Mathematics (2)	\$286,871
Physics (12.5)	\$2,914,223
Psychology (3)	\$32,807
University Police (1)	\$55,662
Z. Smith Reynolds Library (2)	\$32,692
<b>Total (92)</b>	<b>\$8,586,858</b>

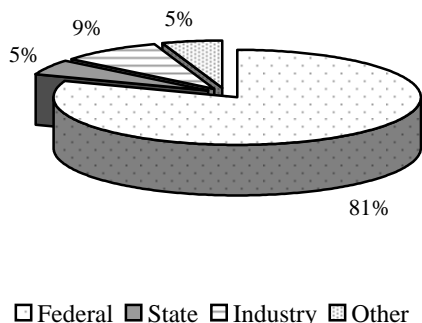
## Research Grants by Fund Source, Bowman Gray Campus, 2001-2005

Fund Source	2000-01	2001-02	2002-03	2003-04	2004-05
Federal	\$73,437,005	\$114,840,282	\$122,966,458	\$146,954,320	\$152,276,049
State	\$7,357,337	\$3,194,199	\$3,239,256	\$3,564,605	\$9,911,486
Industry	\$13,573,733	\$15,781,030	\$16,051,813	\$21,450,760	\$16,801,781
Other	\$11,625,438	\$11,771,880	\$15,474,943	\$14,074,117	\$9,933,502
<b>Total</b>	<b>\$105,993,513</b>	<b>\$145,587,391</b>	<b>\$157,732,470</b>	<b>\$186,043,802</b>	<b>\$188,922,818</b>



\*The Bowman Gray Campus changed the reporting structure of research grant data in 2001-02. The data now includes both direct and indirect costs. The total for 2000-01 would be \$132,787,300 if reported the same way.

### Research Grants 2004-05



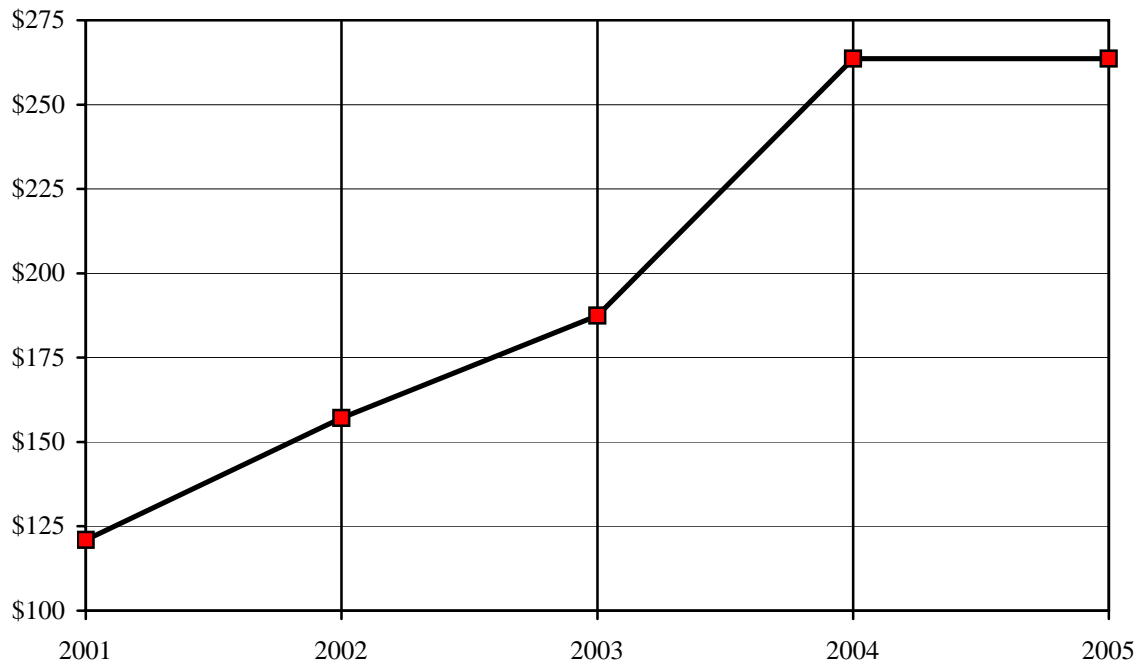
### Research Grants by Discipline

Anesthesiology (30)	\$3,212,143
Biochemistry (38)	\$7,823,386
Cancer Biology (40)	\$5,917,801
Carpenter Library (1)	\$39,995
Dermatology (54)	\$1,916,036
Family & Community Medicine (20)	\$3,047,910
Internal Medicine (262)	\$35,176,238
Medical Education (1)	\$49,775
Microbiology/Immunology (27)	\$5,665,859
Neurobiology & Anatomy (30)	\$7,362,874
Neurology (41)	\$5,807,086
Obstetrics & Gynecology (21)	\$2,896,548
Pathology (44)	\$9,543,808
Pediatrics (60)	\$14,960,165
Physiology/Pharmacology (92)	\$17,498,279
Psychiatry (21)	\$3,797,166
Public Health Services (91)	\$44,606,251
Radiation Oncology (12)	\$1,960,605
Radiological Sciences (18)	\$4,700,509
Regenerative Medicine (6)	\$523,687
Surgical Sciences (107)	\$8,333,578
Institutional (4)	\$4,083,120
<b>Total (1020)</b>	<b>\$188,922,818</b>

## Sources of Revenue - Reynolda Campus, Fiscal Year 2005

Sources of Revenue	Amount
Net Student Tuition and Fees	\$103,653,000
Sales and Services of Auxiliary Enterprises	\$73,950,000
Private Gifts, Grants, and Contracts	\$24,700,000
Dividends, Interest, and Rents	\$9,465,000
Federal Grants and Contracts	\$5,529,000
Organized Activities Relating to Educational Departments	\$3,701,000
Other	\$1,350,000
State Grants and Contracts	\$1,266,000
Interest on Short-term Investments and Other Income	\$753,000
Net Realized and Unrealized Appreciation on Investments	\$39,244,000
<b>Total</b>	<b>\$263,611,000</b>

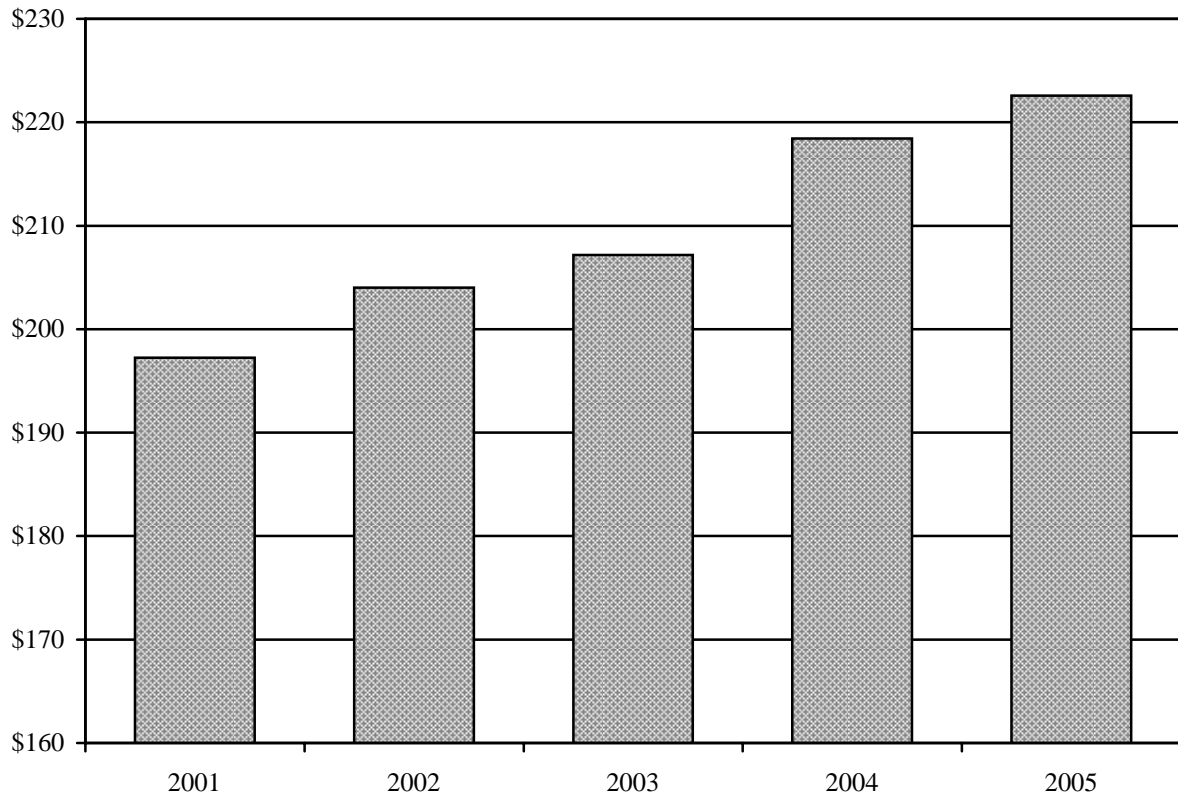
**Reynolda Campus Revenues (x \$1,000,000) 2001-2005**



## Expenditures - Reynolda Campus, Fiscal Year 2005

Expenditures and Transfers	Amount
Instruction, Departmental Research, and Clinical	\$97,946,000
Auxiliary Enterprises	\$58,464,000
Institutional Support	\$33,614,000
Libraries	\$10,312,000
Student Services	\$11,040,000
Academic Support	\$5,616,000
Organized Activities	\$2,393,000
Other	\$3,199,000
<b>Total</b>	<b>\$222,584,000</b>

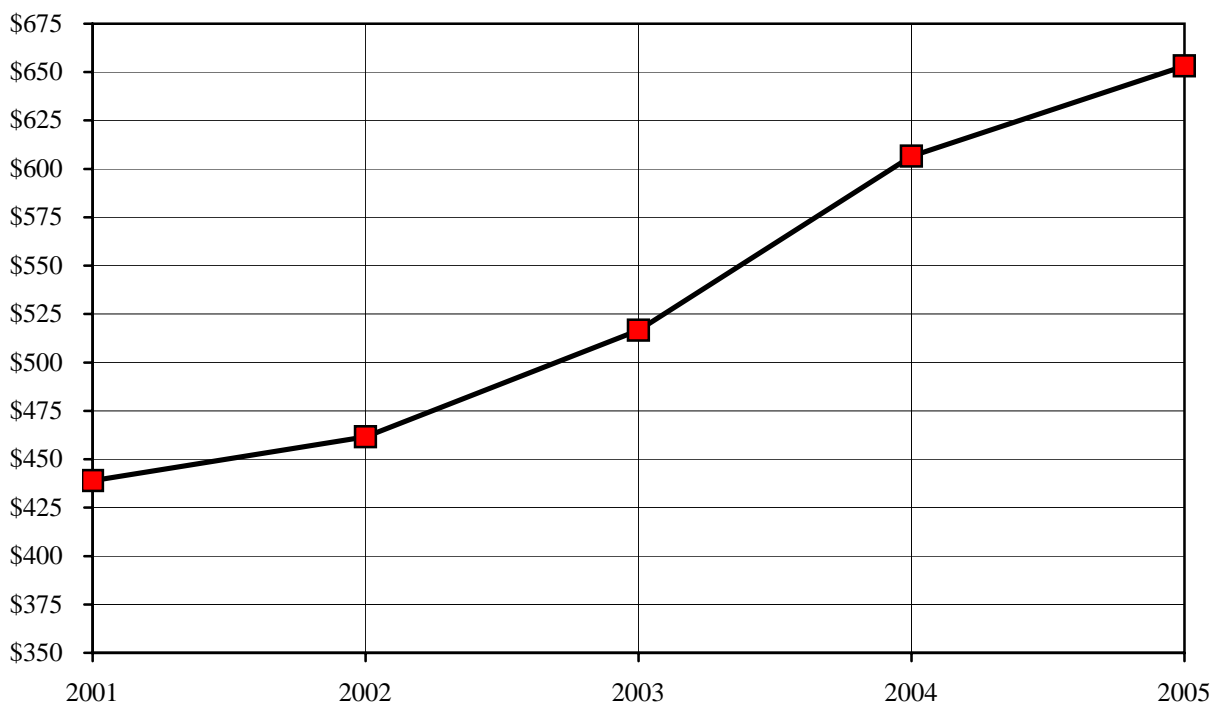
**Reynolda Campus Expenditures (x \$1,000,000) 2001-2005**



## Sources of Revenue - Bowman Gray Campus, Fiscal Year 2001-2005

Sources of Revenue	Amount
Clinical Services	\$328,563,000
Federal Grants and Contracts	\$137,546,000
Private Gifts, Grants, and Contracts	\$48,144,000
Other	\$65,827,000
Net Student Tuition and Fees	\$14,496,000
Dividends, Interest, and Rents	\$8,804,000
State Grants and Contracts	\$12,514,000
Sales and Services of Auxiliary Enterprises	\$1,027,000
Interest on Short-term Investments and Other Income	\$2,925,000
Net Realized and Unrealized Appreciation on Investments	\$33,287,000
<b>Total</b>	<b>\$653,133,000</b>

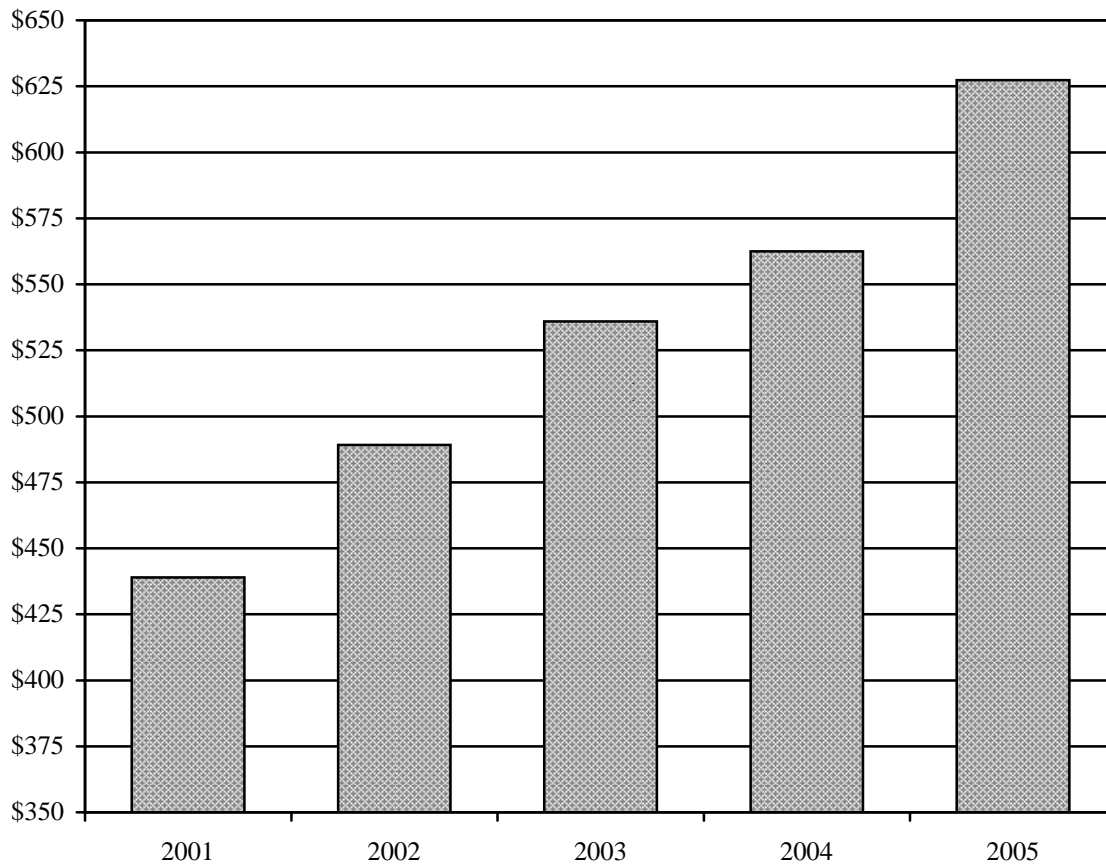
**Bowman Gray Campus Revenues (x \$1,000,000) 2001-2005**



## Expenditures - Bowman Gray Campus, Fiscal Year 2005

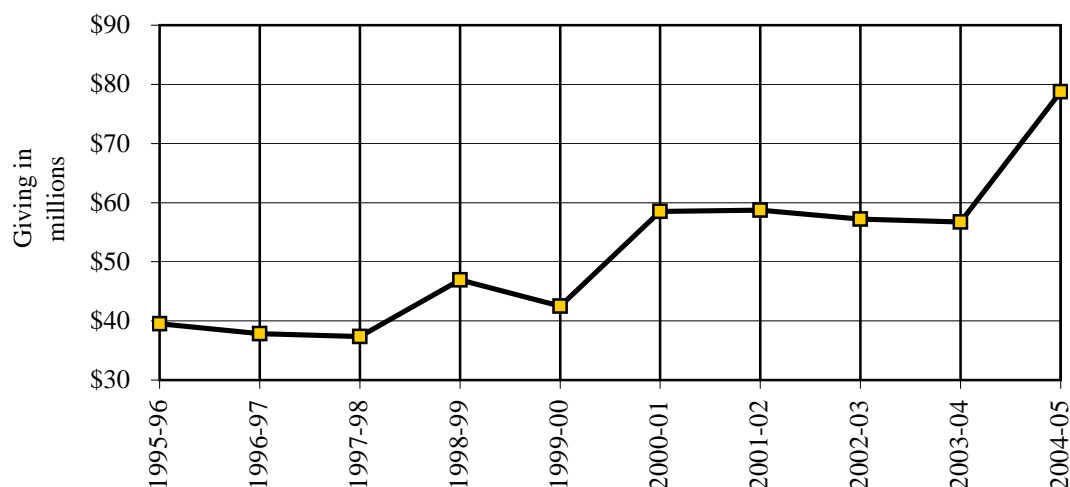
Expenditures and Transfers	Amount
Instruction, Departmental Research, and Clinical	\$410,343,000
Sponsored Research, Training, and Other Programs	\$157,992,000
Institutional Support	\$33,520,000
Academic Support	\$8,231,000
Libraries	\$4,386,000
Auxiliary Enterprises	\$949,000
Student Services	\$1,719,000
Other	\$10,206,000
<b>Total</b>	<b>\$627,346,000</b>

**Bowman Gray Campus Expenditures (x \$1,000,000) 2001-2005**

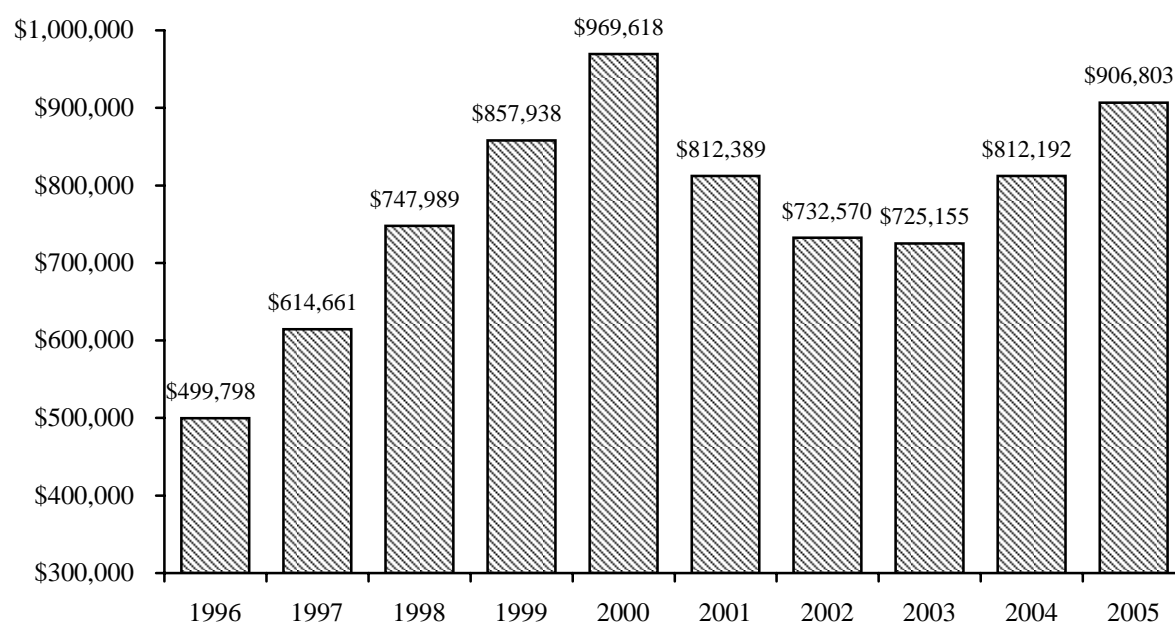


## Summary of Total Giving to Wake Forest University, 1996-2005

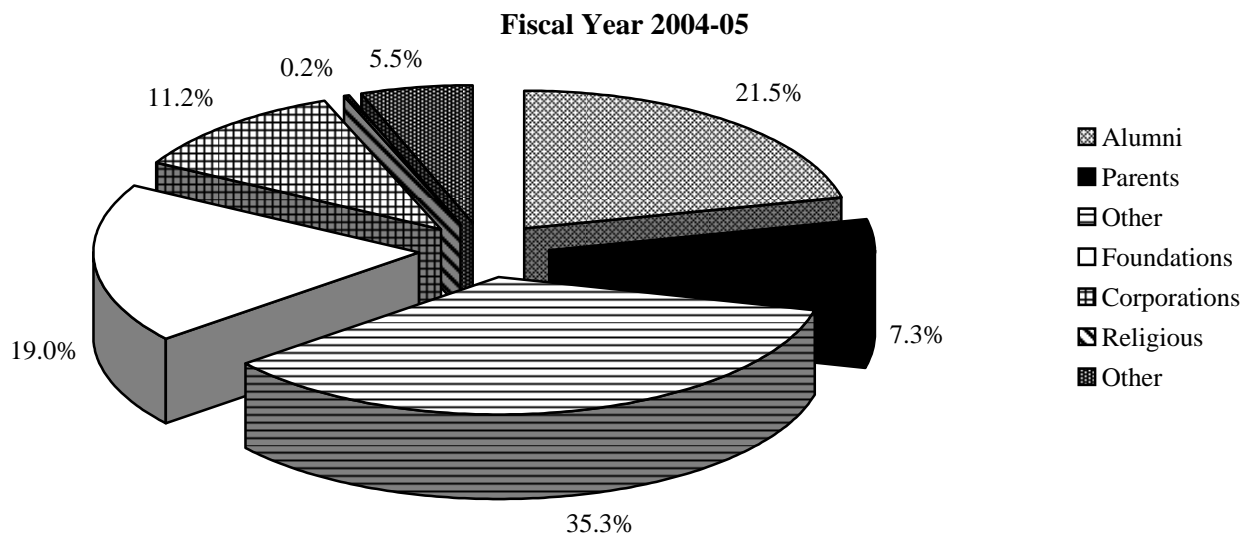
Year	Reynolda Campus	Bowman Gray Campus	Total
1995-96	\$25,259,279	\$14,248,508	<b>\$32,895,288</b>
1996-97	\$17,454,882	\$20,381,895	<b>\$37,836,777</b>
1997-98	\$22,201,636	\$15,180,763	<b>\$39,507,787</b>
1998-99	\$27,714,025	\$19,224,287	<b>\$37,836,777</b>
1999-00	\$25,868,336	\$16,633,467	<b>\$42,501,803</b>
2000-01	\$40,170,743	\$18,317,274	<b>\$58,488,017</b>
2001-02	\$35,032,045	\$23,705,634	<b>\$58,737,679</b>
2002-03	\$33,615,108	\$23,596,556	<b>\$57,211,664</b>
2003-04	\$32,489,427	\$24,211,144	<b>\$56,700,571</b>
2004-05	\$58,197,864	\$20,556,740	<b>\$78,754,604</b>



## Market Value of Endowment Funds (x \$1000)



## Charitable Contributions by Category



	Fiscal Year 2004-05	% Total
<b>Individuals</b>		
Alumni	\$16,944,990	21.5%
Parents	\$5,734,182	7.3%
Other	\$27,790,919	35.3%
<b>Organizations</b>		
Foundations	\$14,930,476	19.0%
Corporations	\$8,819,573	11.2%
Religious	\$171,085	0.2%
Other	\$4,363,280	5.5%
<b>Total</b>	<b>\$78,754,505</b>	<b>100%</b>

## Alumni Giving Percentage Five Year Range

