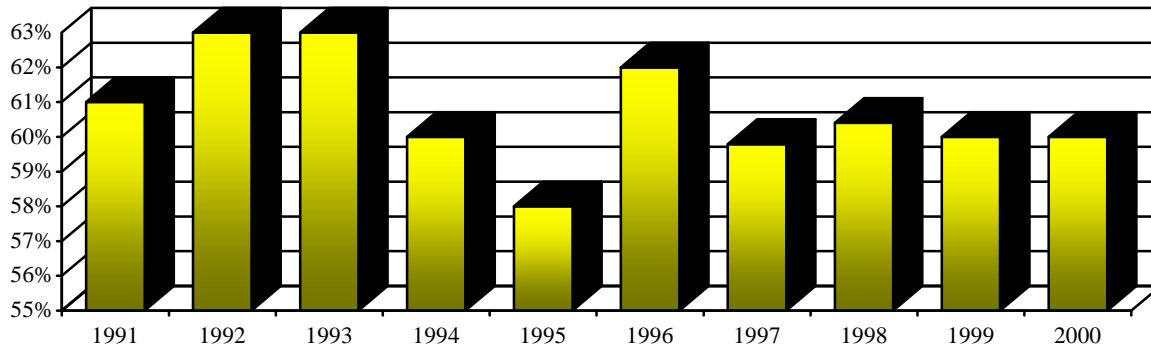


Tenure of Full-time Instructional Faculty - Reynolda Campus, Fall 2000

Rank	Tenured		Tenure Track		Non-Tenure Track		Total		% Tenured	
	Male	Female	Male	Female	Male	Female	Male	Female	Male	Female
Professor	131	27	0	0	6	1	137	28	96%	96%
Associate	63	32	1	1	1	5	65	38	97%	84%
Assistant	0	0	47	40	16	15	63	55	0%	0%
Instructor	0	0	0	0	11	12	11	12	0%	0%
Lecturer	1	0	0	0	2	6	3	6	33%	0%
Other rank	0	0	0	0	4	2	4	2	0%	0%
Total	195	59	48	41	40	41	283	141	69%	42%

Percentage of Full-time Instructional Faculty Tenured - Reynolda Campus, Fall 1991-2000



Highest Degree Earned for Full-Time Instructional Faculty*, Fall 2000

Degree	Male		Female		Total Faculty	
	#	%	#	%	#	%
Doctorate	204	89.1%	103	83.1%	307	87.0%
Masters	22	9.6%	19	15.3%	41	11.6%
Other	3	1.3%	2	1.6%	5	1.4%
Total	229		124		353	100%

*Arts and Sciences and the Calloway School of Business and Accountancy

