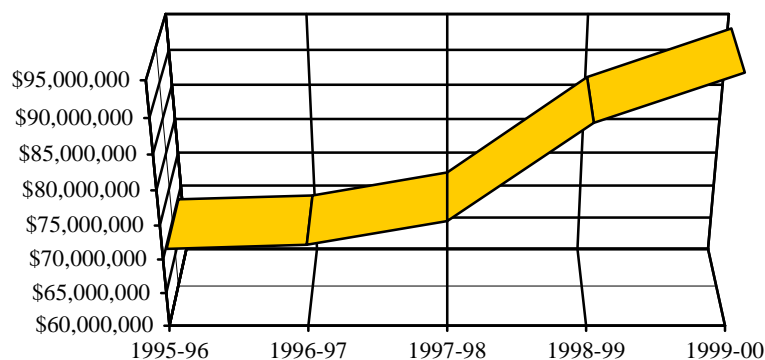


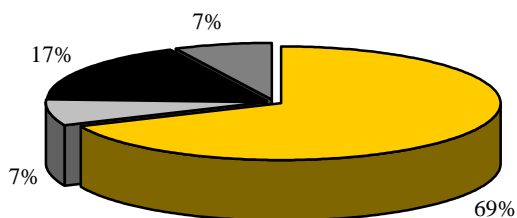
## Research Grants by Fund Source, Bowman Gray Campus, 1995-2000

Fund Source	1995-96	1996-97	1997-98	1998-99	1999-00
Federal	\$45,624,025	\$44,338,212	\$45,300,515	\$57,391,798	\$64,522,822
State	\$6,688,265	\$7,435,903	\$7,793,584	\$7,340,668	\$7,031,956
Industry	\$12,949,763	\$14,033,830	\$15,422,013	\$13,475,967	\$16,215,674
Other	\$4,394,352	\$4,461,071	\$5,257,306	\$9,481,341	\$6,696,387
<b>Total</b>	<b>\$69,656,405</b>	<b>\$70,269,016</b>	<b>\$73,773,418</b>	<b>\$87,689,774</b>	<b>\$94,466,839</b>

### Total Research Grants Received



### Research Grants 1999-00



■ Federal 
 ■ State 
 ■ Industry 
 ■ Other

### Research Grants by Discipline

Anesthesiology (36)	\$2,069,071
Biochemistry (31)	\$3,946,429
Cancer Biology (21)	\$1,138,102
Dentistry (4)	\$230,576
Dermatology (22)	\$389,058
Family & Community Medicine (10)	\$1,123,820
Internal Medicine (Dept Total - 199)	\$9,105,045
Microbiology/Immunology (15)	\$1,693,234
Neurobiology & Anatomy (25)	\$3,686,896
Neurology (36)	\$5,364,359
Neuropsychology (3)	\$673,470
Obstetrics & Gynecology (19)	\$2,201,163
Pathology (Dept Total - 60)	\$8,891,321
Pediatrics (57)	\$4,724,967
Physiology/Pharmacology (87)	\$10,274,031
Psychiatry (13)	\$1,658,110
Public Health Services (93)	\$21,348,727
Radiation Oncology (13)	\$783,852
Radiologic Sciences (Div Total - 23)	\$2,510,200
Surgical Sciences (Div Total - 82)	\$4,769,519
Medical Center Administration (1)	\$2,064,774
Education Research and Services (3)	\$237,230
Minority Affairs (1)	\$75,000
AHEC (2)	\$627,973
Institutional (1)	\$4,879,912
<b>Total (857)</b>	<b>\$94,466,839</b>