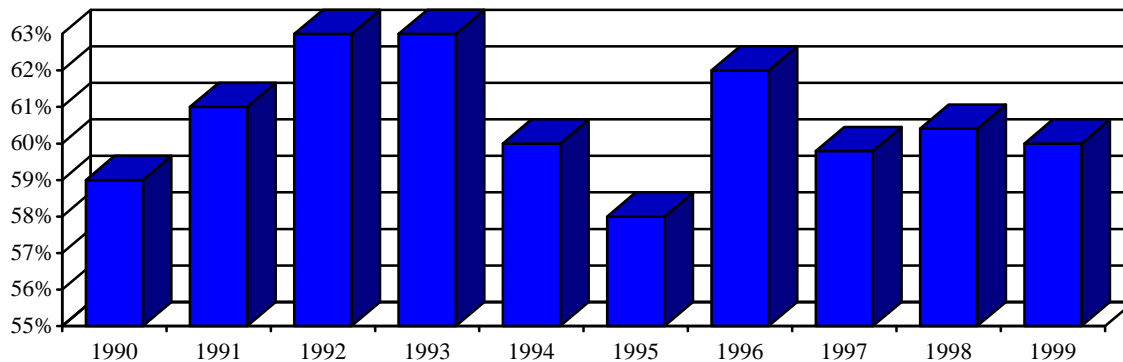


Tenure of Full-time Instructional Faculty* - Reynolda Campus, Fall 1999

Rank	Tenured		Tenure Track		Non-Tenure Track		Total		% Tenured	
	Male	Female	Male	Female	Male	Female	Male	Female	Male	Female
Professor	130	26	0	0	3	0	133	26	98%	100%
Associate	63	26	4	1	1	1	68	28	93%	93%
Assistant	0	0	41	39	15	19	56	58	0%	0%
Instructor	0	0	0	0	11	17	11	17	0%	0%
Lecturer	1	0	0	0	2	5	3	5	33%	0%
Other rank	1	0	0	0	3	0	4	0	25%	0%
Total	195	52	45	40	35	42	275	134	71%	39%

* Source: Office of Human Resources

Percentage of Full-time Instructional Faculty Tenured - Reynolda Campus, Fall 1990-1999



Highest Degree Earned for Full-Time Instructional Faculty, Fall 1999**

Degree	Male		Female		Total Faculty	
	#	%	#	%	#	%
Doctorate	205	90.7%	97	79.5%	302	86.8%
Masters	19	8.4%	24	19.7%	43	12.4%
Other	2	0.9%	1	0.8%	3	0.9%
Total	226		122		348	100%

**Arts and Sciences and the Calloway School of Business and Accountancy and all faculty: e.g., faculty on leave

