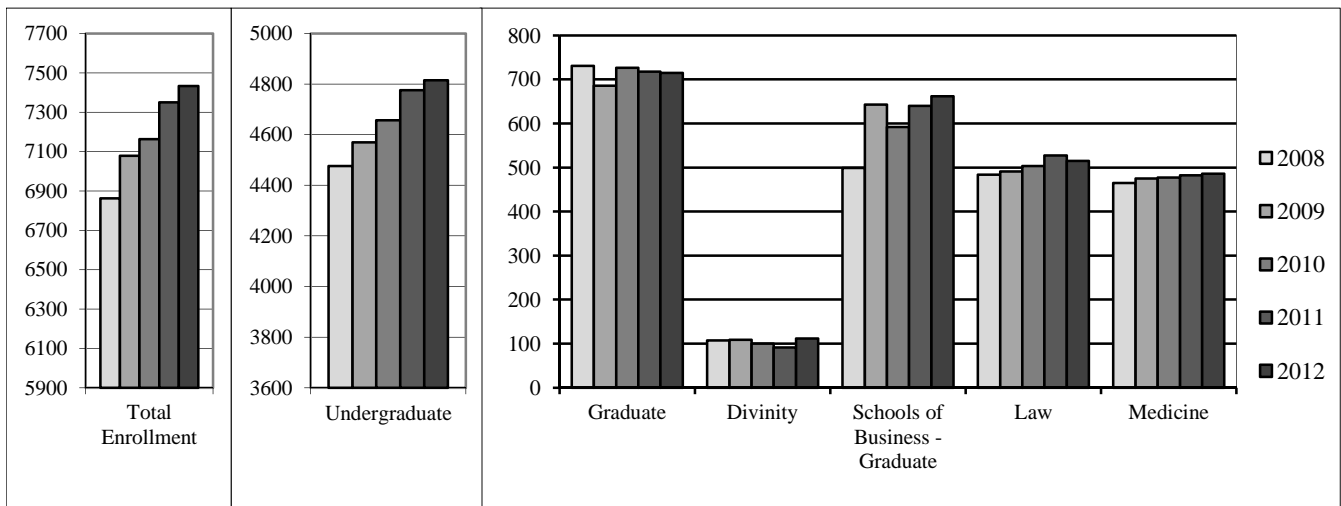


Enrollment by School, Fall 2008-2012



Enrollment by Class and by School, Fall 2012

	Male	Female	Total	FTE*
Freshmen [†]	600	667	1,267	1267.00
Sophomores	555	642	1,197	1194.50
Juniors	584	625	1,209	1206.75
Seniors	550	578	1,128	1108.75
Unclassified	6	8	14	8.00
Total Undergraduates	2,295	2,520	4,815	4785.00
<i>Study Abroad</i>	<i>108</i>	<i>226</i>	<i>334</i>	<i>334.00</i>
<i>Reynolda Campus</i>	<i>2,187</i>	<i>2,294</i>	<i>4,481</i>	<i>4451.00</i>
Graduate - Arts & Sciences	207	238	445	423.50
Graduate - Medicine	123	147	270	265.50
Divinity	57	55	112	110.00
Schools of Business - Graduate	411	251	662	659.75
Law School	298	217	515	511.75
Medical School	261	225	486	486.00
Physician Assistant	23	104	127	127.00
University Total	3,675	3,757	7,432	7368.50

*Full-time equivalent

Source: IPEDS-Fall Enrollment 2012

[†]Includes all first-time, first-year students, even those with advanced standing

