

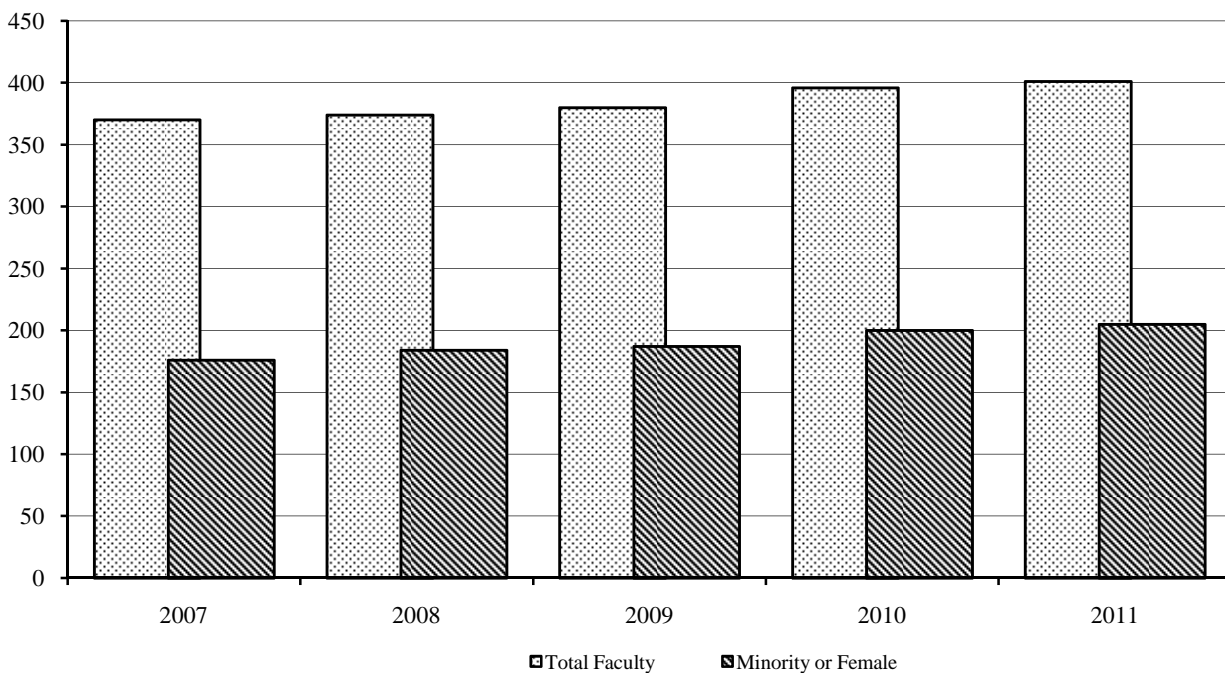
## Full-time Faculty\* by Ethnicity - Wake Forest University, Fall 2011

	Amer. Indian		Asian		Black		Hispanic		White		Other/Unknown		Total
	#	%	#	%	#	%	#	%	#	%	#	%	
Arts and Sciences	0	0.0%	22	5.5%	15	3.7%	21	5.2%	333	83.0%	10	2.5%	<b>401</b>
Divinity School	0	0.0%	1	10.0%	2	20.0%	0	0.0%	7	70.0%	0	0.0%	<b>10</b>
Law School	0	0.0%	0	0.0%	7	20.0%	0	0.0%	28	80.0%	0	0.0%	<b>35</b>
Schools of Business	1	1.4%	4	5.7%	2	2.9%	3	4.3%	59	84.3%	1	1.4%	<b>70</b>
Medical School	5	0.5%	137	13.3%	40	3.9%	25	2.4%	813	78.9%	10	1.0%	<b>1,030</b>
<b>Total</b>	<b>6</b>	<b>0.4%</b>	<b>164</b>	<b>10.6%</b>	<b>66</b>	<b>4.3%</b>	<b>49</b>	<b>3.2%</b>	<b>1,240</b>	<b>80.2%</b>	<b>21</b>	<b>3.1%</b>	<b>1,546</b>

\*"Full-time Instructional Faculty" as defined by the AAUP Faculty Compensation Survey (excludes medical school faculty)

## Percentage of Full-time Minority and Female Faculty†, Arts and Sciences, Fall 2007-2011

Fall	Total Faculty	Number of Minority	% Minority	Number of Female	% Female	Total Percentage of Minority or Female
2007	370	47	12.7%	144(23 minority)	38%	44%
2008	374	51	13.6%	150(28 minority)	39%	46%
2009	380	59	15.5%	159(31 minority)	42%	49%
2010	396	61	15.4%	168(33 minority)	42%	51%
2011	401	63	15.7%	173(31 minority)	43%	51%



†"Full-time Instructional Faculty" as defined by the AAUP Faculty Compensation Survey