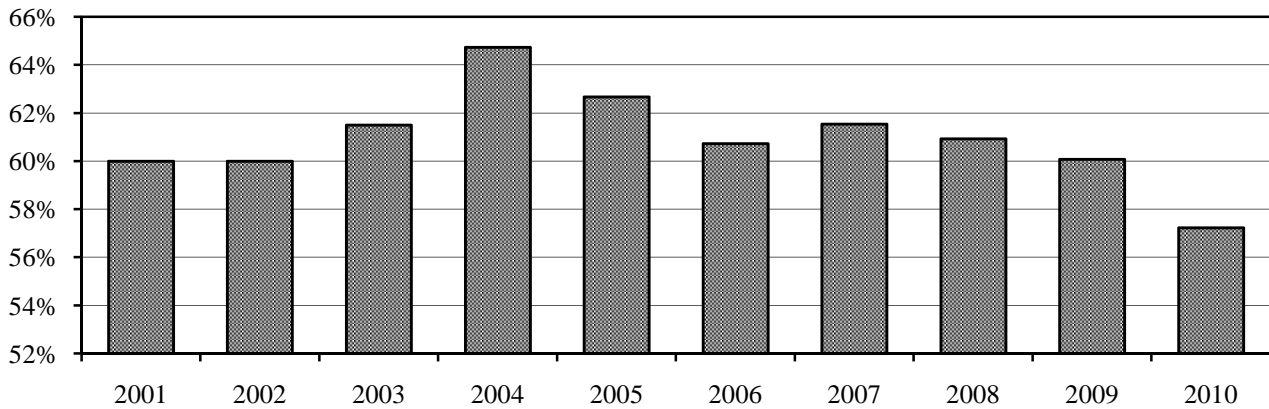


Tenure of Full-time Instructional Faculty* - Reynolda Campus, Fall 2010

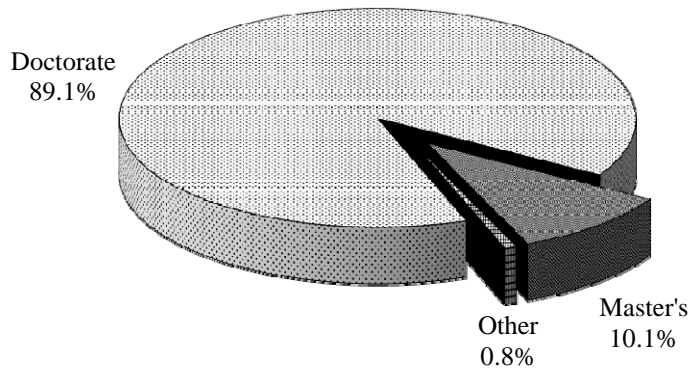
Rank	Tenured		Tenure Track		Non-Tenure Track		Total		% Tenured	
	Male	Female	Male	Female	Male	Female	Male	Female	Male	Female
Professor	122	48	0	0	0	0	122	48	100%	100%
Associate	71	48	2	1	0	0	73	49	97%	98%
Assistant	0	0	40	42	1	1	41	43	0%	0%
Lecturer	0	0	0	0	19	35	19	35	0%	0%
Other rank	0	0	0	0	48	27	48	27	0%	0%
Total	193	96	42	43	68	63	303	202	64%	48%

Percentage of Full-time Instructional Faculty* Tenured - Reynolda Campus, Fall 2001-2010



Highest Degree Earned for Full-Time Instructional Faculty*†, Fall 2010

Degree	Male		Female		Total Faculty	
	#	%	#	%	#	%
Doctorate	212	93.0%	141	83.9%	353	89.1%
Master's	15	6.6%	25	14.9%	40	10.1%
Other	1	0.4%	2	1.2%	3	0.8%
Total	228	100%	168	100%	396	100%



*"Full-time Instructional Faculty" as defined by the AAUP Faculty Compensation Survey

† Arts and Sciences