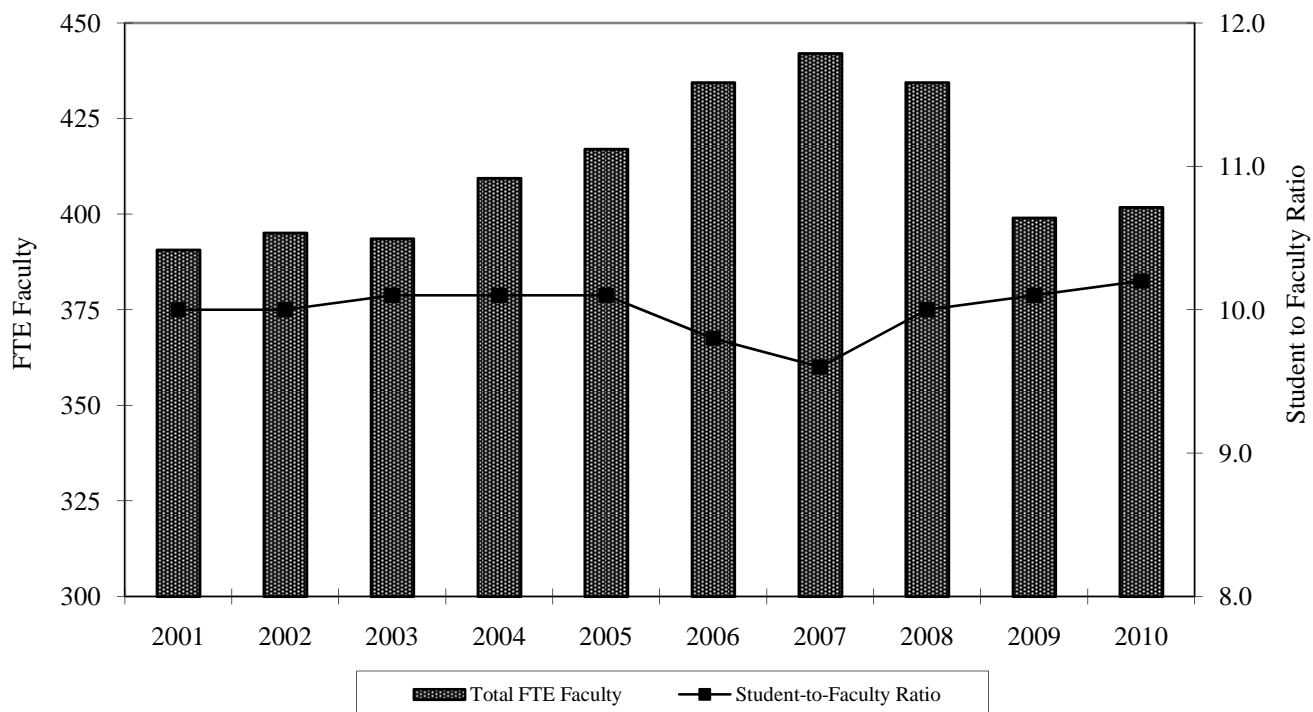


Teaching Equivalents and Student-to-Faculty Ratio*, Fall 2001-2010

	2001	2002	2003	2004	2005	2006	2007	2008	2009	2010
Full-time Teaching Faculty	357	362	362	363	368	386	393	384	358	357
FTE	357	362	362	363	368	386	393	384	358	357
Part-time Teaching Faculty	84	75	88	82	94	93	85	94	78	81
FTE	28.2	26.2	28.3	33.9	37.6	40.0	34.6	36.1	30.4	33.1
Teaching Administrators/Staff	14	16	11	34	38	33	47	44	38	42
FTE	5.4	6.9	3.3	12.6	10.9	8.4	14.4	14.4	10.6	11.7
Total Teaching Faculty/FTE	455/391	453/395	461/394	479/409	500/417	512/434	525/442	522/434	474/398	480/402
Student-to-Faculty Ratio	10.0	10.0	10.1	10.1	10.1	9.8	9.6	10.0	10.1	10.2

*Starting in 2009, includes just Arts and Sciences. Prior years also include Calloway School of Business and Accountancy.



Percentage of Part-time Faculty†, Fall 2006-2010

	2006	2007	2008	2009	2010
Total Number of Full-time Faculty and Teaching Administrators/Staff	419	440	428	396	399
Total Number of Part-time Faculty‡	93	85	94	78	81
Percentage of Part-time Faculty	18.2%	16.2%	18.0%	16.5%	16.9%
Percentage of Part-time FTE Faculty	9.2%	7.8%	8.3%	7.6%	8.2%

†Starting in 2009, includes teaching faculty in just Arts and Sciences. Prior years also include Calloway School of Business and Accountancy.

‡ Includes part-time faculty and part-time instructors, fee basis only