

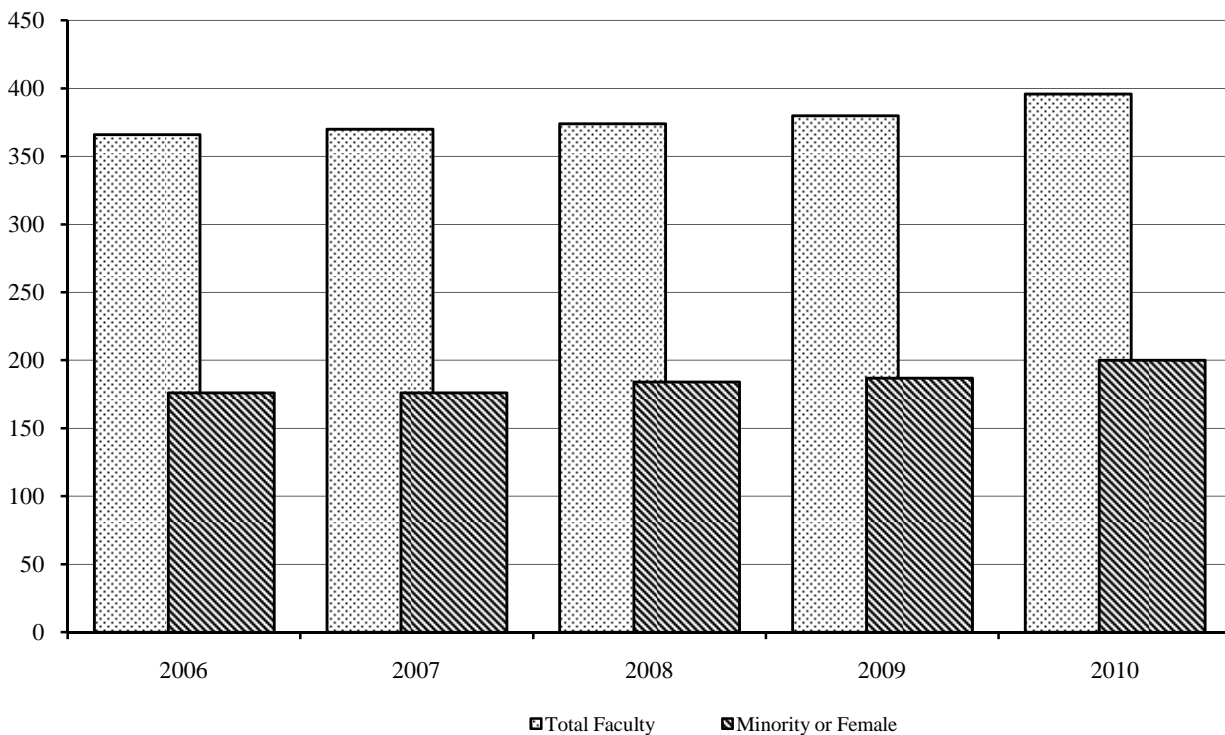
Full-time Faculty* by Ethnicity - Wake Forest University, Fall 2010

	Black		Amer. Indian		Asian		Hispanic		White		Other		Total
	#	%	#	%	#	%	#	%	#	%	#	%	
Arts and Sciences	16	4.0%	0	0.0%	21	5.3%	20	5.1%	330	83.3%	9	2.3%	396
Divinity School	1	16.7%	0	0.0%	1	16.7%	0	0.0%	4	66.7%	0	0.0%	6
Law School	6	17.1%	0	0.0%	0	0.0%	0	0.0%	29	82.9%	0	0.0%	35
Schools of Business	1	1.5%	1	1.5%	4	5.9%	4	5.9%	57	83.8%	1	1.5%	68
Medical School	26	2.7%	5	0.5%	115	12.1%	19	2.0%	776	81.9%	6	0.6%	947
Total	50	3.4%	6	0.4%	141	9.7%	43	3.0%	1,196	82.4%	16	3.1%	1,452

*"Full-time Instructional Faculty" as defined by the AAUP Faculty Compensation Survey (excludes medical school faculty)

Percentage of Full-time Minority and Female Faculty†, Arts and Sciences, Fall 2006-2010

Fall	Total Faculty	Number of Minority	% Minority	Number of Female	% Female	Total Percentage of Minority or Female
2006	366	44	12.0%	143(20 minority)	38%	45%
2007	370	47	12.7%	144(23 minority)	38%	44%
2008	374	51	13.6%	150(28 minority)	39%	46%
2009	380	59	15.5%	159(31 minority)	42%	49%
2010	396	65	16.4%	168(33 minority)	42%	51%



†"Full-time Instructional Faculty" as defined by the AAUP Faculty Compensation Survey