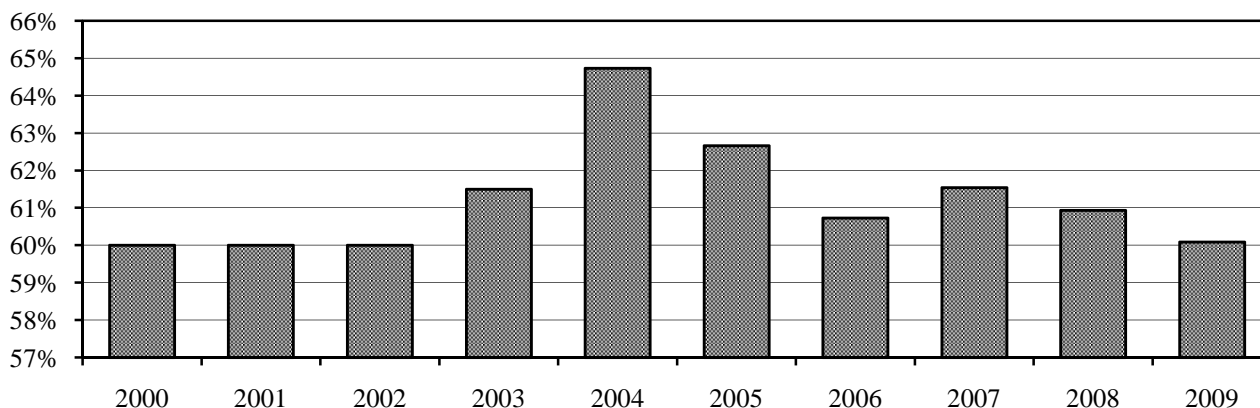


### Tenure of Full-time Instructional Faculty\* - Reynolda Campus, Fall 2009

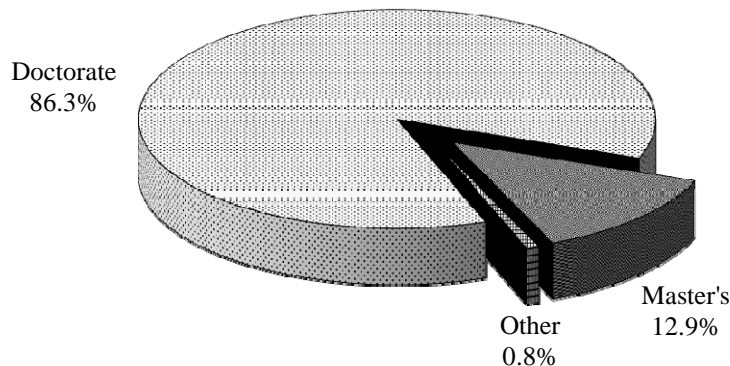
Rank	Tenured		Tenure Track		Non-Tenure Track		Total		% Tenured	
	Male	Female	Male	Female	Male	Female	Male	Female	Male	Female
Professor	121	48	0	0	0	0	121	48	100%	100%
Associate	75	42	2	1	0	0	77	43	97%	98%
Assistant	0	0	37	40	1	0	38	40	0%	0%
Lecturer	0	0	0	0	19	35	19	35	0%	0%
Other rank	0	0	0	0	34	21	34	21	0%	0%
<b>Total</b>	<b>196</b>	<b>90</b>	<b>39</b>	<b>41</b>	<b>54</b>	<b>56</b>	<b>289</b>	<b>187</b>	<b>68%</b>	<b>48%</b>

### Percentage of Full-time Instructional Faculty\* Tenured - Reynolda Campus, Fall 2000-2009



### Highest Degree Earned for Full-Time Instructional Faculty\*†, Fall 2009

Degree	Male		Female		Total Faculty	
	#	%	#	%	#	%
Doctorate	198	89.6%	130	81.8%	328	86.3%
Master's	22	10.0%	27	17.0%	49	12.9%
Other	1	0.5%	2	1.3%	3	0.8%
<b>Total</b>	<b>221</b>	<b>100%</b>	<b>159</b>	<b>100%</b>	<b>380</b>	<b>100%</b>



\*"Full-time Instructional Faculty" as defined by the AAUP Faculty Compensation Survey

† Arts and Sciences