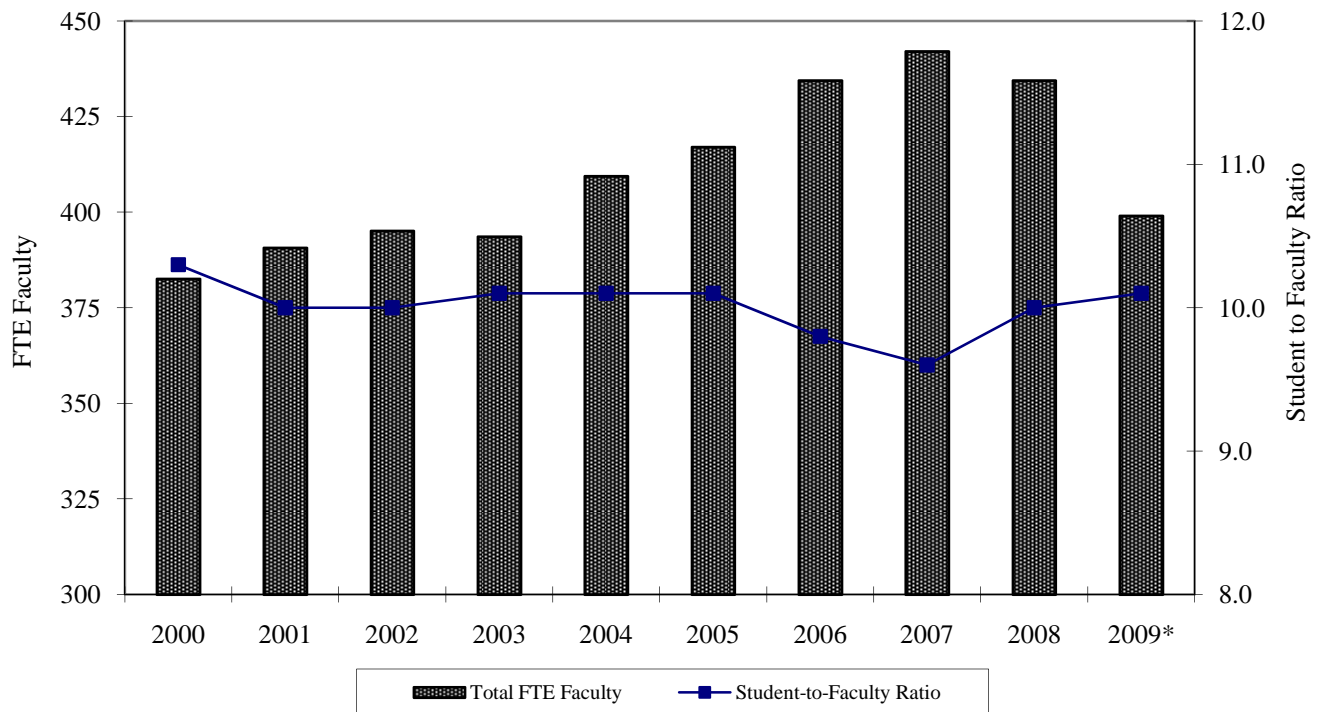


Teaching Equivalents and Student-to-Faculty Ratio*, Fall 2000-2009

	2000	2001	2002	2003	2004	2005	2006	2007	2008	2009*
Full-time Teaching Faculty	355	357	362	362	363	368	386	393	384	358
FTE	355	357	362	362	363	368	386	393	384	358
Part-time Teaching Faculty	74	84	75	88	82	94	93	85	94	78
FTE	23.3	28.2	26.2	28.3	33.9	37.6	40.0	34.6	36.1	30.4
Teaching Administrators/Staff	11	14	16	11	34	38	33	47	44	38
FTE	4.2	5.4	6.9	3.3	12.6	10.9	8.4	14.4	14.4	10.6
Total Teaching Faculty/FTE	440/383	455/391	453/395	461/394	479/409	500/417	512/434	525/442	522/434	474/398
Student-to-Faculty Ratio	10.3	10.0	10.0	10.1	10.1	10.1	9.8	9.6	10.0	10.1

*Starting in 2009, includes just Arts and Sciences. Prior years also include Calloway School of Business and Accountancy.



Percentage of Part-time Faculty†, Fall 2005-2009

	2005	2006	2007	2008	2009*
Total Number of Full-time Faculty and Teaching Administrators/Staff	406	419	440	428	396
Total Number of Part-time Faculty‡	94	93	85	94	78
Percentage of Part-time Faculty	18.8%	18.2%	16.2%	18.0%	16.5%
Percentage of Part-time FTE Faculty	9.0%	9.2%	7.8%	8.3%	7.6%

†Starting in 2009, includes teaching faculty in just Arts and Sciences. Prior years also include Calloway School of Business and Accountancy.

‡ Includes part-time faculty and part-time instructors, fee basis only