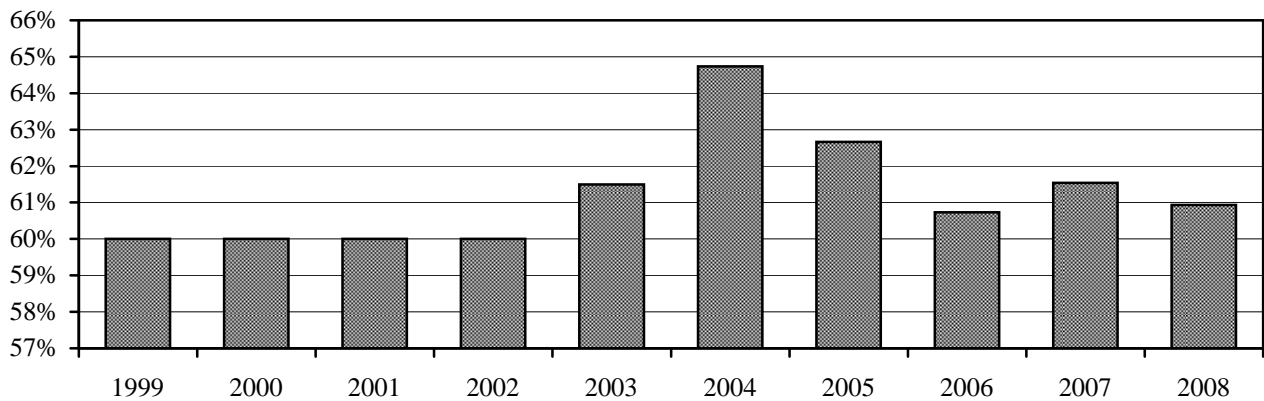


### Tenure of Full-time Instructional Faculty^ - Reynolda Campus, Fall 2008

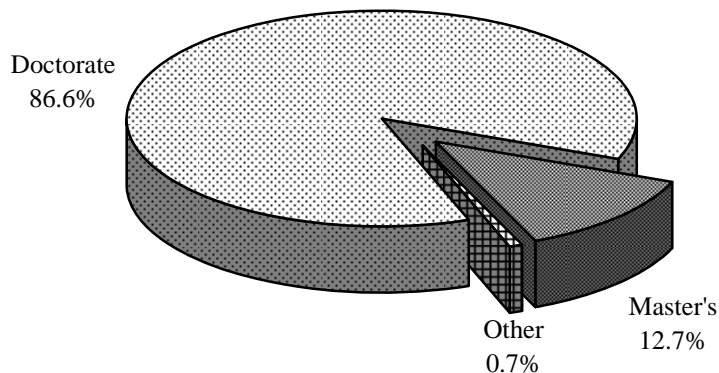
Rank	Tenured		Tenure Track		Non-Tenure Track		Total		% Tenured	
	Male	Female	Male	Female	Male	Female	Male	Female	Male	Female
Professor	124	41	0	0	0	0	124	41	100%	100%
Associate	77	45	1	2	1	2	79	49	97%	92%
Assistant	0	0	32	32	23	5	55	37	0%	0%
Instructor	0	0	0	0	4	6	4	6	0%	0%
Lecturer	0	0	0	0	18	33	18	33	0%	0%
Other rank	0	0	0	0	14	11	14	11	0%	0%
<b>Total</b>	<b>201</b>	<b>86</b>	<b>33</b>	<b>34</b>	<b>60</b>	<b>57</b>	<b>294</b>	<b>177</b>	<b>68%</b>	<b>49%</b>

### Percentage of Full-time Instructional Faculty^ Tenured - Reynolda Campus, Fall 1999-2008



### Highest Degree Earned for Full-Time Instructional Faculty^\*, Fall 2008

Degree	Male		Female		Total Faculty	
	#	%	#	%	#	%
Doctorate	221	89.8%	128	81.5%	349	86.6%
Master's	24	9.8%	27	17.2%	51	12.7%
Other	1	0.4%	2	1.3%	3	0.7%
<b>Total</b>	<b>246</b>	<b>100%</b>	<b>157</b>	<b>100%</b>	<b>403</b>	<b>100%</b>



^"Full-time Instructional Faculty" as defined by the AAUP Faculty Compensation Survey

\*Arts and Sciences and the Calloway School of Business and Accountancy