

A black and white photograph of a campus scene in winter. The foreground is a snow-covered lawn. On the left, a row of bare trees stands in a line. In the background, a large, classical-style building with a portico and columns is visible. A small figure of a person is walking on the snow in the distance. The sky is overcast.

# *FACT BOOK*

*2003-2004*

*Office of  
Institutional  
Research*

*Wake Forest  
University*

# **Wake Forest University**

## **Fact Book 2003-2004**

**Thirteenth Edition – February 2004**

### **Reynolda Campus**

Wake Forest College, Wayne Calloway School of Business and Accountancy, School of Law, Graduate School, Babcock Graduate School of Management and Divinity School.

### **Bowman Gray Campus**

Wake Forest University School of Medicine – includes Graduate School and Allied Health Programs.

### **Office of Institutional Research**

**Ross A. Griffith**, Director

**Adam W. Shick**, Assistant Director

**Sara R. Gravitt**, Research Assistant

**Daniel Ying Wai Fan**, Graduate Assistant

**P. O. Box 7373 Reynolda Station, Winston-Salem, NC 27109 (336) 758-5244**

Web site: **<http://www.wfu.edu/ir>**

## Table of Contents

### General Information

History.....	1
Mission Statement.....	1
Statement of Principle on Diversity .....	2
Chronological History .....	2
Accreditation .....	3
Board of Trustees .....	4
Administration (Executive Council) .....	4
Presidents .....	4
Administrative Organizational Charts .....	5
Academic Programs .....	7
Information Systems .....	8
Libraries .....	9

### Students

Admissions, Fall 2003 .....	10
Admissions, First-time Freshmen and Transfer Students .....	11
High School Rank and SAT Scores for Entering Freshmen .....	12
Average GRE Scores, Graduate School .....	13
Fall Enrollment for the University, 1984-2003.....	14
Fall Enrollment by School and by Class .....	15
Ethnic Enrollment .....	16
University Ethnic Enrollment .....	17
Undergraduate Greek Affiliation .....	18
Undergraduate Religious Preference.....	19
North Carolina Undergraduate Students by County of Residence.....	20
Undergraduate Geographic Distribution by Region.....	21
Undergraduate Geographic Distribution by Region and State of Residence .....	22
Undergraduates from the U.S. and Other Countries .....	23
Total Number of Degrees Granted, 1983-2003.....	24
Number and Type of Degrees Granted, 2002 and 2003.....	25
Number and Type of Degrees Granted by School, 1998-2003 .....	26
Graduates by Double Majors, 2002-2003 .....	27
Graduates by Minor, 2002-2003 .....	28
Undergraduates and Senior Graduates Receiving Degree Credits Abroad.....	29
Undergraduates Receiving Academic Distinction .....	29
Undergraduate Graduation and Retention Rates.....	30
Placement of 2003 Graduating Class .....	31
Placement of Graduating Classes, 1999-2003 .....	32
Wake Forest Students Applying to Medical School .....	33
Wake Forest Students Applying to Law School .....	34

## **Faculty and Staff**

Teaching Faculty and Faculty by Rank and Gender .....	35
Full-time Faculty by Ethnicity .....	36
Teaching Equivalents and Student-to-Faculty Ratio.....	37
Percentage of Part-time Faculty .....	37
Tenure of Full-time Instructional Faculty – Reynolda Campus.....	38
Highest Degree Earned by Faculty – Reynolda Campus .....	38
Tenure of Full-time Instructional Faculty – School of Medicine.....	39
Highest Degree Earned by Faculty – School of Medicine .....	39
Average Faculty Salary by Rank – Reynolda Campus.....	40
Average Faculty Salaries – College and Calloway .....	40
Full-time Staff by Category, Gender, and Ethnicity .....	41

## **Facilities**

Main Facilities Reynolda Campus, and Gross Square Feet by Decade .....	42
Student Housing Utilization.....	43

## **Finances**

First-year Student Tuition and Undergraduate Financial Aid .....	44
Annual Tuition/Fees for "Most Competitive" Private Universities .....	45
Undergraduate Student Financial Aid Programs.....	46
Undergraduate Financial Aid by Source .....	47
Average Instructional Dollars Expended Per Undergraduate Student .....	47
Research Grants by Fund Source and by Discipline – Reynolda Campus.....	48
Research Grants by Fund Source and by Discipline – Bowman Gray Campus.....	49
Sources of Revenue – Reynolda Campus .....	50
Expenditures – Reynolda Campus .....	51
Sources of Revenue – Bowman Gray Campus .....	52
Expenditures – Bowman Gray Campus .....	53
Summary of Total Giving to Wake Forest.....	54
Market Value of Endowment .....	54
Charitable Contributions by Category .....	55
Alumni Giving Percentage.....	55

## **History of Wake Forest University**

On February 3, 1834, the school was founded as Wake Forest Institute. Located in the town of Wake Forest, North Carolina, the school was rechartered as Wake Forest College in 1838. In 1894 the School of Law was established. The School of Medicine, founded in 1902, offered a two-year medical program until 1941. In that year, the school moved from the town of Wake Forest to Winston-Salem, became associated with the North Carolina Baptist Hospital, and was named the Bowman Gray School of Medicine. This facility is located approximately four miles from the main campus. In 1942, Wake Forest admitted women as regular undergraduate students.

In 1946 the Trustees of Wake Forest College and the Baptist State Convention of North Carolina accepted a proposal by the Z. Smith Reynolds Foundation to relocate the College to Winston-Salem. The late Charles H. Babcock and his wife, the late Mary Reynolds Babcock, contributed a campus site, and building funds were received from the Z. Smith Reynolds Foundation and other sources. In 1956 the College moved all operations. The old Wake Forest campus is now home to the Southeastern Baptist Theological Seminary.

A School of Business Administration was established in 1948. In 1969, the School was named the Charles H. Babcock School of Business Administration and admitted the first graduate students in 1971. In 1972, the school enrolled only graduate students and the name was changed to the Charles H. Babcock Graduate School of Management. At that time, a Department of Business and Accountancy and a Department of Economics were established within the College. In 1980, the Department of Business and Accountancy was reconstituted as the School of Business and Accountancy; and, the name was changed to the Wayne Calloway School of Business and Accountancy in 1995.

In February 1996, the trustees approved the opening of a Divinity School. A full-time dean was hired in July 1996 with the first class enrolling in fall 1999. In October 1997, the Bowman Gray School of Medicine was renamed the Wake Forest University School of Medicine, while its campus is now known as the Bowman Gray Campus.

## **The Mission and Purpose of Wake Forest University**

(As approved by the Board of Trustees – March 22, 2002)

Wake Forest is a university dedicated to the pursuit of excellence in the liberal arts and in graduate and professional education. Its distinctiveness in its pursuit of its mission derives from its private, co-educational, and residential character; its size and location; and its Baptist heritage. Each of these factors constitutes a significant aspect of the unique character of the institution.

The University is now comprised of seven constituent parts: two undergraduate institutions, Wake Forest College and the School of Business and Accountancy; the Graduate School; and four professional schools: the School of Law, the School of Medicine, the Babcock Graduate School of Management and the School of Divinity. It seeks to honor the ideals of liberal learning, which entail commitment to transmission of cultural heritages; teaching the modes of learning in the basic disciplines of human knowledge; developing critical appreciation of moral, aesthetic and religious values; advancing the frontiers of knowledge through in-depth study and research; and applying and utilizing knowledge in the service of humanity.

Wake Forest has been dedicated to the liberal arts for over a century and a half; this means education in the fundamental fields of human knowledge and achievement, as distinguished from education that is technical or narrowly vocational. It seeks to encourage habits of mind that ask "why," that evaluate evidence, that are open to new ideas, that attempt to understand and appreciate the perspectives of others, that accept complexity and grapple with it, that admit error, and that pursue truth. Wake Forest College has by far the largest student body in the University, and its function is central to the University's larger life. The College and the Graduate School are most singularly focused on learning for its own sake; they, therefore, serve as exemplars of specific academic values in the life of the university.

Beginning as early as 1894, Wake Forest accepted an obligation to provide professional training in a number of fields, as a complement to its primary mission of liberal arts education. This responsibility is fulfilled in the conviction that the humane values embodied in the liberal arts are also centrally relevant to the professions. Professional education at Wake Forest is characterized by a commitment to ethical and other professional ideals that transcend technical skills. Like the Graduate School, the professional schools are dedicated to the advancement of learning in their fields. In addition, they are specifically committed to the application of knowledge to solving concrete problems of human beings. They are strengthened by values and goals which they share with the College and Graduate School, and the professional schools enhance the work of these schools and the University as a whole by serving as models of service to humanity.

Wake Forest was founded by private initiative, and ultimate decision-making authority lies in a privately appointed Board of Trustees rather than in a public body. Funded to a large extent from private sources of support, it is determined to chart its own course in the pursuit of its goals. As a co-educational institution, it seeks to "educate together" persons of

both sexes and from a wide range of backgrounds --- racial, ethnic, religious, geographical, socioeconomic, and cultural. Its residential features are conducive to learning and the pursuit of a wide range of co-curricular activities. It has made a conscious choice to remain small in overall size; it takes pride in being able to function as a community rather than a conglomerate. Its location in the Piedmont area of North Carolina engenders an ethos that is distinctively Southern, and more specifically North Carolinian. As it seeks further to broaden its constituency and to receive national recognition, it is also finding ways to maintain the ethos associated with its regional roots.

Wake Forest is proud of its Baptist and Christian heritage. For more than a century and a half, it has provided the University an indispensable basis for its mission and purpose, enabling Wake Forest to educate thousands of ministers and laypeople for enlightened leadership in their churches and communities. Far from being exclusive and parochial, this religious tradition gives the University roots that ensure its lasting identity and branches that provide a supportive environment for a wide variety of faiths. The Baptist insistence on both separation of church and state and local autonomy has helped to protect the University from interference and domination by outside interests, whether these be commercial, governmental, or ecclesiastical. The Baptist stress upon an uncoerced conscience in matters of religious belief has been translated into a concern for academic freedom. The Baptist emphasis upon revealed truth enables a strong religious critique of human reason, even as the claims of revelation are put under the scrutiny of reason. The character of intellectual life at Wake Forest encourages open and frank dialogue and provides assurance that the University will be ecumenical and not provincial in scope, and that it must encompass perspectives other than the Christian. Wake Forest thus seeks to maintain and invigorate what is noblest in its religious heritage.

## **Statement of Principle on Diversity**

Wake Forest University is a community of men and women that seeks the enlightenment and freedom which come through diligent study and learning. Its higher goal, however, is to give life to the University motto "Pro Humanitate," as members translate a passion for knowledge into compassionate service.

The community shares a tradition that embraces freedom and integrity and acknowledges the worth of the individual. The heritage, established by the school's founders and nurtured by succeeding generations, promotes a democratic spirit arising from open-mindedness and discourse.

Wake Forest fosters compassion and caring for others. Its collective strength and character are derived from the values and distinctive experiences of each individual; therefore, it affirms the richness of human intellect and culture and its contribution to knowledge, faith, reason, and dialogue. Furthermore, it strives toward a society in which good will, respect, and equality prevail. To that end, Wake Forest University rejects hatred and bigotry in any form and promotes justice, honor, and mutual trust.

## **Chronological History of Wake Forest University**

- 1834    Founded in the town of Wake Forest, N.C., as Wake Forest Manual Labor Institute in cooperation with the N.C. Baptist Convention
- 1838    Named Wake Forest College
- 1894    School of Law established
- 1902    School of Medicine founded
- 1921    First Summer Session
- 1936    Approval of the School of Law by the American Bar Association
- 1941    Relocation of the School of Medicine to Winston-Salem and eventual change of name to Bowman Gray School of Medicine and association with the North Carolina Baptist Hospital
- 1942    Women admitted as undergraduate students
- 1948    School of Business Administration established
- 1956    Move to Winston-Salem in response to an endowment from the Z. Smith Reynolds Foundation
- 1961    Division of Graduate Studies established
- 1967    Became Wake Forest University
- 1969    School of Business Administration renamed Charles H. Babcock School of Business Administration
- 1972    Charles H. Babcock Graduate School of Management enrolled first graduate students. Department of Business and Accountancy and a Department of Economics established in the College.

- 1980 Department of Business and Accountancy renamed School of Business and Accountancy
- 1986 Redefined the relationship with the N.C. Baptist State Convention
- 1995 School of Business and Accountancy changed name to Wayne Calloway School of Business and Accountancy
- 1997 Change of name to Wake Forest University School of Medicine
- 1999 Opening of the Wake Forest University Divinity School
- 2002 Incorporation of Wake Forest University Health Sciences

## **Accreditation**

### **Wake Forest University is a Member of or Accredited by:**

AACSB International – The Association to Advance Collegiate Schools of Business  
 American Association of Nurse Anesthetists  
 American Chemical Society  
 American Council on Education  
 Accreditation Review Commission on Education for the Physician Assistant of the American Medical Association  
 Association of American Colleges  
 Association of American Law Schools  
 Association of American Medical Colleges  
 Association of Theological Schools – Associate Membership  
 Board of Law Examiners  
 Commission on Colleges of the Southern Association of Colleges and Schools  
 Council for Accreditation of Counseling and Related Educational Programs  
 Council on Certification of Nurse Anesthesia Educational Programs  
 Council of Graduate Schools  
 Council of Southern Graduate Schools  
 Council of the North Carolina State Bar  
 Council of the Section of Legal Education and Admissions to the Bar of the American Bar Association  
 European Foundation for Management Development  
 Liaison Committee on Medical Education of the American Medical Association and the Association of American Medical Colleges  
 National Accrediting Agency for Clinical Laboratory Sciences  
 National Association of Independent Colleges and Universities  
 National Council for the Accreditation of Teacher Education  
 North Carolina Association of Colleges and Universities  
 North Carolina Independent Colleges and Universities  
 North Carolina Conference of Graduate Schools  
 North Carolina Department of Public Instruction  
 Oak Ridge Associated Universities  
 Section on Medical Schools of the American Medical Association  
 Southern Universities Conference

## 2003-2004 University Board of Trustees

Jerry H. Baker	Lelia B. Farr	James W. Johnston	L. Glenn Orr, Jr.
James L. Becton	Martin L. Garcia	Sandra R. Kahle	Michael G. Queen
W. Louis Bissette, Jr.	Marvin D. Gentry	Dee Hughes LeRoy	Andrew J. Schindler
Simpson O. Brown, Jr.	Murray C. Greason, Jr.	Douglas F. Manchester	Adelaide A. Sink
Jocelyn Burton	James R. Helvey, III	John G. Medlin, Jr.	K. Wayne Smith
Jan W. Calloway	Harvey R. Holding	Ted R. Meredith	Janice Kulynych Story
Ronald E. Deal	Lawrence D. Hopkins	Russell W. Meyer, Jr.	Lloyd P. Tate, Jr.
Graham W. Denton, Jr.	Alice Kirby Horton	Ashlee A. Miller	G. Kennedy Thompson
A. Doyle Early, Jr.	Albert R. Hunt	Kenneth D. Miller	J. Lanny Wadkins, Jr.
Lisbeth C. Evans	Jeanette W. Hyde	Barbara B. Millhouse	James T. Williams, Jr.
			Kyle A. Young

## Life Trustees

Bert L. Bennett	Floyd Fletcher	Petro Kulynych	Lonnie B. Williams
Louise Broyhill	Victor I. Flow, Jr.	Arnold D. Palmer	J. Tylee Wilson
C. C. Cameron	Jean H. Gaskin	Frances P. Pugh	T. Eugene Worrell
Charles W. Cheek	Weston P. Hatfield	Zachary Smith	
Egbert L. Davis, Jr.	James E. Johnson, Jr.	D. E. Ward, Jr.	

## Administration – Executive Council

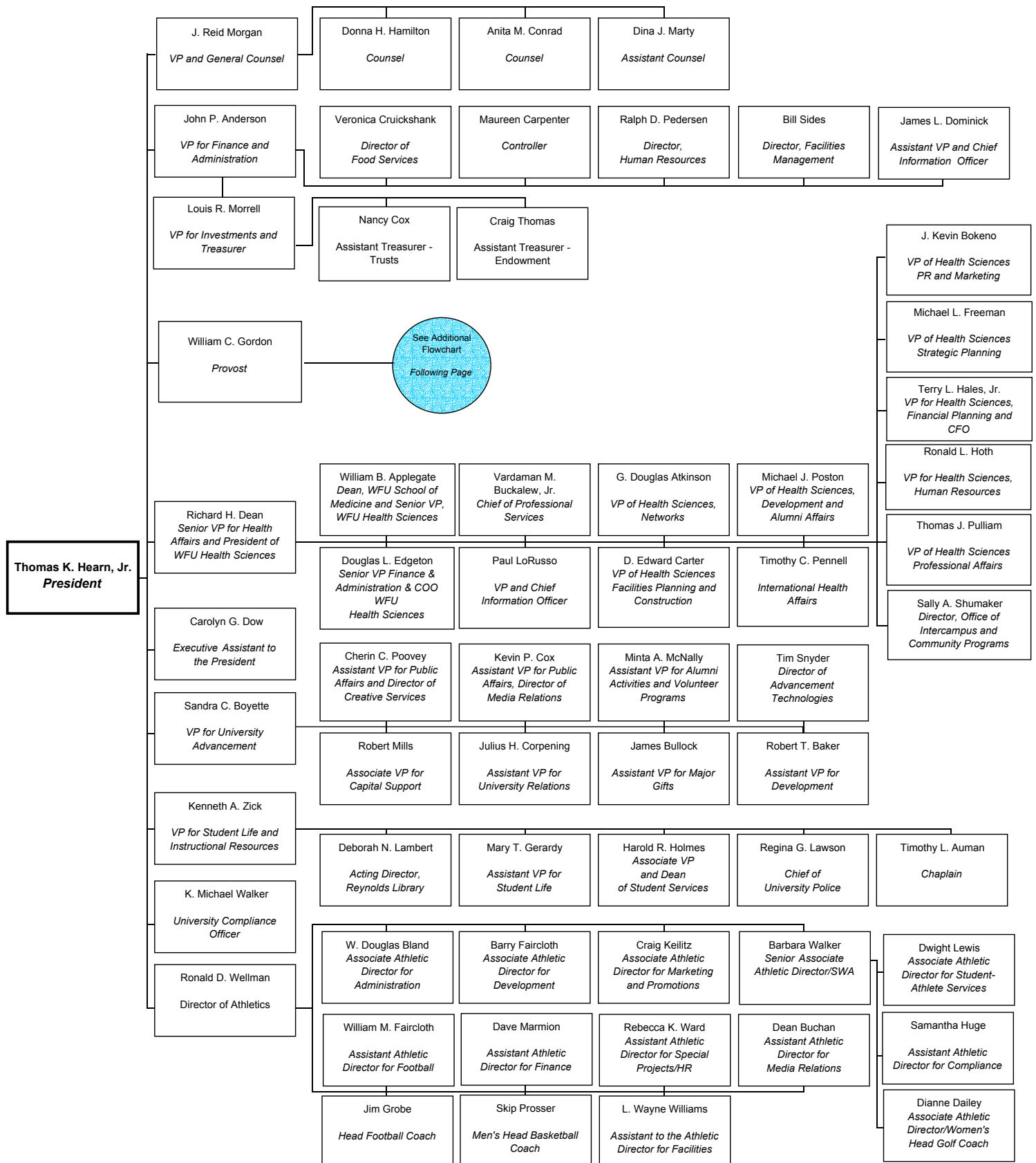
Thomas K. Hearn, Jr.	President
Richard H. Dean	Senior Vice President for WFU Health Affairs and President, WFU Health Sciences
William C. Gordon	Provost
John P. Anderson	Vice President for Finance and Administration
William B. Applegate	Dean, School of Medicine and Senior Vice President, WFU Health Sciences
Sandra Combs Boyette	Vice President for University Advancement
Douglas L. Edgeton	Senior Vice President Finance and Administration, WFU Health Sciences
James Reid Morgan	Vice President and General Counsel
Louis R. Morrell	Vice President for Investments and Treasurer
Ronald D. Wellman	Director of Athletics
Kenneth A. Zick	Vice President for Student Life and Instructional Resources
Paul D. Escott	Dean of the College
Toby A. Hale	Dean of the Summer School
Bill J. Leonard	Dean of the Divinity School
Gordon A. Melson	Dean of the Graduate School
Ajay Patel	Interim Dean, Babcock Graduate School of Management
Robert K. Walsh	Dean of the Law School
Jack E. Wilkerson, Jr.	Dean of the Calloway School of Business and Accountancy
Samuel T. Gladding	Associate Provost
Deborah Lambert	Acting Director, Z. Smith Reynolds Library
Harold R. Holmes	Associate Vice President and Dean of Student Services
Carolyn G. Dow	Executive Assistant to the President

## Presidents of Wake Forest University

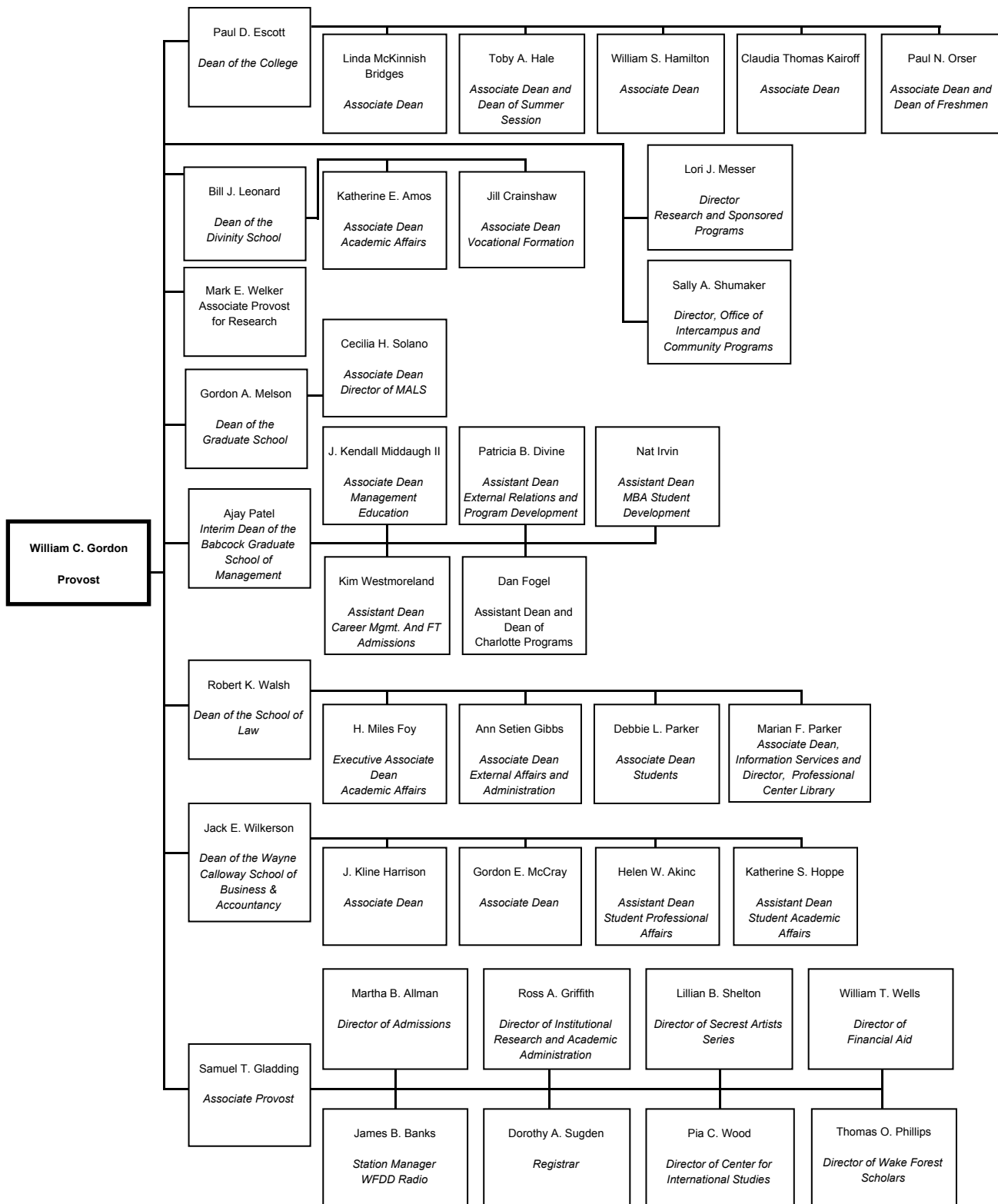
1834 Samuel Wait	1884 Charles Elisha Taylor	1967 James Ralph Scales
1845 William Hooper	1905 William Louis Poteat	1983 Thomas K. Hearn, Jr.
1849 John Brown White	1927 Francis Pendleton Gaines	
1854 Washington Manly Wingate	1930 Thurman D. Kitchin	
1879 Thomas Henderson Pritchard	1950 Harold Wayland Tribble	



## ADMINISTRATIVE ORGANIZATIONAL CHART



# ADMINISTRATIVE ORGANIZATIONAL CHART



## Degrees Offered by Academic Program

Academic Program	Degree Offered	Academic Program	Degree Offered
<b>Allied Health</b>		<b>Health Sciences</b>	
Medical Technology	C, BS (combined degree)	Combined MD/PhD*	MD/PhD
Nurse Anesthesia	C, MSN (combined degree)	Dentistry	BS (combined degree)
Physician Assistant	MMS	Health and Exercise Science	BS, MS
		Medicine	MD, MD/MBA, MD/MS
<b>Bio-Medical Sciences</b>		<b>Law</b>	
Biochemistry and Molecular Biolog	PhD	Law	JD, LL.M
Biomedical Engineering	MS, PhD		
Cancer Biology	PhD	<b>Letters</b>	
Clinical Epidemiology & Health Services Research	MS	Classical Studies	BA
Comparative Medicine	MS	English	BA, MA
Microbiology and Immunology	PhD		
Molecular and Cellular Pathobiology	PhD	<b>Liberal Studies</b>	
Molecular Genetics	PhD	Liberal Studies	MALS
Molecular Medicine	MS, PhD		
Neurobiology and Anatomy	PhD	<b>Life Sciences</b>	
Neuroscience	PhD	Biology	BA, BS, MS, PhD
Pharmacology	PhD		
Physiology	PhD	<b>Mathematics</b>	
		Mathematics	BA, BS, MA
<b>Business and Management</b>		Mathematical Business	BS
Accountancy	BS, MSA	Mathematical Economics	BS
Analytical Finance	BS		
Business	BS	<b>Philosophy</b>	
Business Administration and Management	MBA	Philosophy	BA
Combined MBA/PhD*	MBA/PhD		
Information Systems	BS	<b>Physical Sciences</b>	
		Chemistry	BA, BS, MS, PhD
		Physics	BA, BS, MS, PhD
<b>Communication</b>		<b>Psychology</b>	
Communication	BA, MA	Psychology	BA, MA
<b>Counseling</b>		<b>Religion</b>	
Counseling	MA	Religion	BA, MA
<b>Computer and Information Sciences</b>		<b>Renewable Natural Resources</b>	
Computer Science	BS, MS	Forestry and Environmental Studie	BS (combined degree)
<b>Education</b>		<b>Social Sciences and History</b>	
Education	BA, BS	Anthropology	BA
Teaching	MAEd	Economics	BA
		History	BA
<b>Engineering</b>		Political Science	BA
Engineering	BS (combined degree)	Sociology	BA
<b>Foreign Languages</b>		<b>Theology</b>	
French	BA	Divinity	M. Div.
German	BA		
Greek (Classical)	BA	<b>Visual and Performing Arts</b>	
Latin	BA	Art History	BA
Russian	BA	Studio Art	BA
Spanish	BA	Music History/Theory/Composition	BA
		Music Performance	BA
		Theatre	BA

\*PhD of combined degrees can be obtained in any discipline offering PhD

## Information Systems (Reynolda Campus)

Information Systems supports University instruction, research, and administrative needs through computing and telecommunications services. The campus computer network offers high-speed connectivity from all residence hall rooms, all offices, and many classrooms and public areas.

All students on the Reynolda Campus are given a network login ID; the login is maintained as long as the student is enrolled. This account provides students with access to electronic mail and software packages. Upon matriculation, and again at the beginning of the junior year, undergraduate students receive an IBM ThinkPad as part of their tuition. The current ThinkPad model has a 2.2 GigaHertz Pentium IV processor, 512 MB RAM, 32 MB video ram, 15" active matrix screen, 40 gigabyte hard drive, and a DVD/CD-RW drive. In addition to the ThinkPad, all first-year and third-year students receive a color inkjet printer. Software on the ThinkPad includes Windows XP, Microsoft Office XP, and Mozilla, as well as research, analytical, and development tools. Maintenance and support for the laptop computers is provided on campus through an award-winning service center. Loaner computers are available for students as needed.

Information Systems also supports an extensive information system that includes documentation, class schedules and grades, University-wide activity calendars, the Wake Forest University Libraries information system, and the electronic version of the *Old Gold and Black*. The Wake Forest Information Network (WIN) provides the University community with faculty, staff, and student databases and directories, an alumni directory, class registration and degree audit services, and customizable links to news, weather, and research sites.

The University has an extensive collection of computing facilities that serve both academic and administrative needs. A Hewlett-Packard series 3000/979, a 3000/969, and Windows 2000 servers provide for administrative computing needs. Three IBM SP/2s and five free-standing RS/6000 computers provide messaging, systems management, Intranet, and scientific and other research needs. These SP/2s contain 5, 9, and 12 computing nodes respectively. In addition to the 12-node SP/2 complex, Wake Forest also maintains a 98-node Linux Cluster for supercomputing applications in the sciences. Sixty-two Windows 2000 servers and 10 LINUX servers provide for file and print services and courseware. A Windows 2000 server, an IBM P-Series 660, and 2 Linux servers provide library services. These systems are available to students, faculty, and staff 24 hours a day through network and dial-up connectivity.

Programming languages available on the Academic Computing (AC) system include C, C++, Java, Perl, Tcl/Tk, Pascal, Cobol, Fortran77, and Fortran95. Statistical packages such as SPSSX and SAS can be used for data analysis, forecasting, and financial modeling. Maple, a symbolic algebra package, is also available. Using the ThinkPads, students have access to a large variety of instructional, classroom, and research resources. These include the online catalog, databases, and electronic journals provided by the Z. Smith Reynolds Library.

Many departments on campus have their own computing resources in addition to those available through the Information Systems Department. For example, Physics and Chemistry share six DEC Alpha, six IBM PowerSeries, two SUN SPARC, and a SGI Indy workstation. The Wayne Calloway School of Business and Accountancy and the Education Department have their own microcomputer labs.

Wake Forest has access to computing resources outside the University. The University is a member of the Inter-University Consortium for Political and Social Research (ICPSR), located at the University of Michigan. Membership in ICPSR provides faculty and students with access to a large library of data files, including public opinion surveys, cross-cultural data, financial data, and complete census data. The University is also a member of EDUCAUSE, a national consortium of colleges and universities concerned with computing issues.

Wake Forest has a Gigabit Ethernet connection to the Internet using a Cisco 6509 router. Through this connection, Wake Forest has access to supercomputing resources located at the MCNC/North Carolina Supercomputing Center in the Research Triangle and to all the premier research networks in the World, including Internet II and Abilene. Wake Forest is also working closely with the North Carolina Research and Education Network on other advanced networking technologies. Through the Cisco 6509 router, the Undergraduate Campus maintains a separate direct Gigabit path to the Medical School and other educational institutions in Winston-Salem. Information Systems supports and maintains the University's high speed, switched FDDI (fiber distributed data interface), Gigabit Ethernet, Fast Ethernet and extensive wireless campus network. This network currently

connects all academic and administrative buildings and provides robust interconnectivity for independent building Ethernet networks. Each residence hall room is equipped with one Ethernet connection per resident.

Information Systems provides assistance by telephone, and supports walk-in customers, from 8 a.m. until 9 p.m., Monday through Thursday; 8 a.m. until 5 p.m. on Friday; and 5p.m. until 9 p.m. on Sunday. A voice mail retrieval system is activated on Saturdays to respond to campus-wide emergency calls. On-site computing support is available in residence halls through Resident Technology Advisors (RTAs). Over 160 students are involved in Information Systems student technology programs. This extensive student-centric computing environment is a key component of our educational support mission. Students work in a number of settings that include providing direct support for faculty, staff, and students; providing technology training in the community; and delivering technology management and consulting services for external clients. In addition, students participate in unique leadership and community outreach programs including a technology-focused residence hall, a student technology council, and community network implementation.

## **Libraries**

The libraries of Wake Forest University support instruction and research at the undergraduate level and in the disciplines awarding graduate degrees. The libraries of the University hold membership in the Association of College and Research Libraries, and in the Association of Southeastern Research Libraries. They rank among the top libraries in the Southeast in expenditures per student.

The Wake Forest University libraries include the Z. Smith Reynolds Library, the Professional Center Library (serving the Law School and the Babcock Graduate School of Management), and the Coy C. Carpenter Library of the Wake Forest University School of Medicine.

The three libraries maintain collections totaling over 1.7 million print volumes and subscriptions to more than 16,000 periodicals and serials, largely of scholarly content. The Z. Smith Reynolds Library holds over 1.3 million volumes in the general collection, over 1 million reels of microfilm and pieces of microtext, and growing video and DVD collections. As a congressionally designated selective federal depository and depository of North Carolina government information, the ZSR Library holds nearly 170,000 government documents. The Professional Center Library holds over 200,000 volumes and the Coy C. Carpenter Library holds over 152,000 volumes. The three libraries share an online catalog that also provides entrée to electronic resources, databases, and an ever-expanding collection of electronic journals, all accessible via the campus network and remotely.

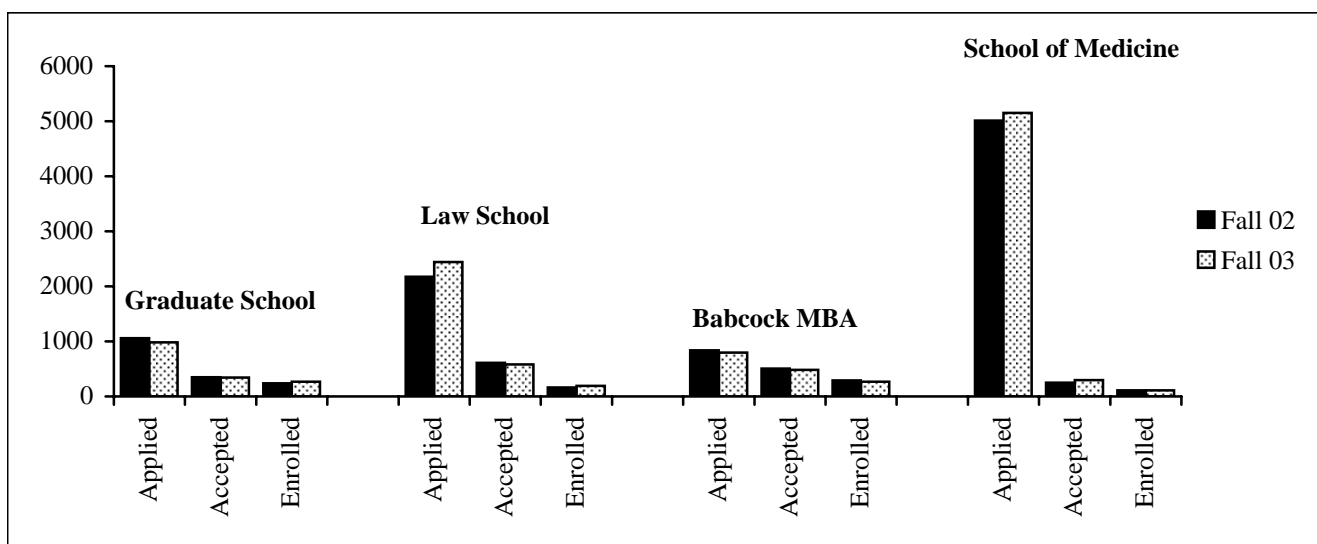
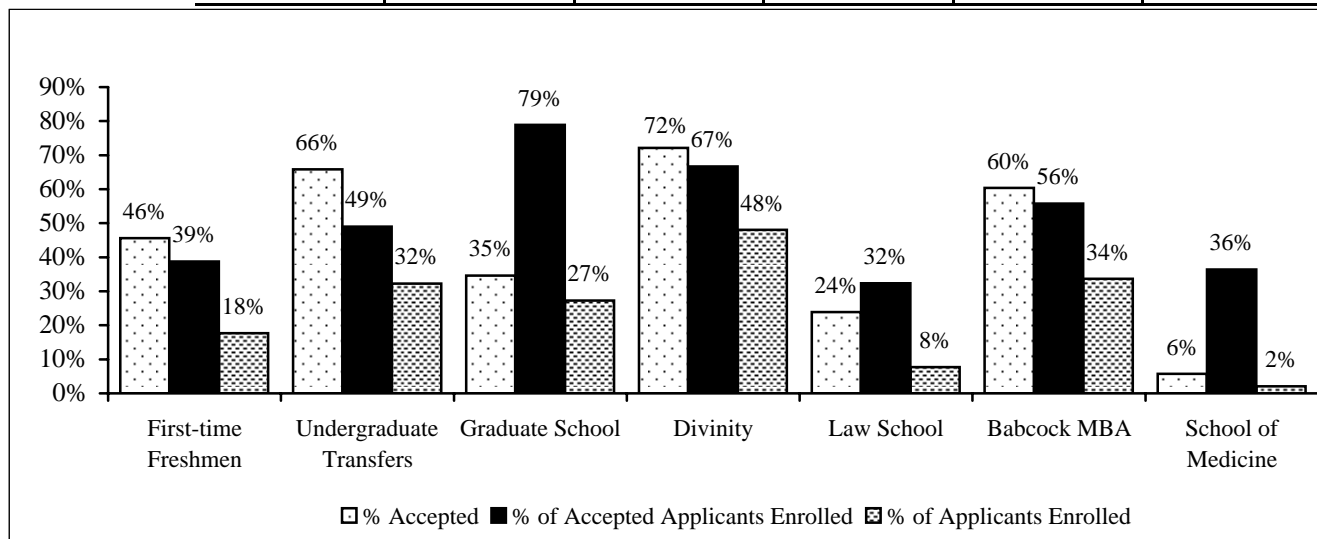
The Z. Smith Reynolds Library provides comprehensive reference and research services, including assistance with online searching, directed and independent research as well as discipline-related library instruction, information literacy classes, and general library orientation. Reference tools are available in electronic and print formats. Wake Forest students, faculty and staff may use interlibrary loan services to borrow materials from other libraries throughout the country at no charge. Special collections in the Z. Smith Reynolds Library include the Rare Books Collection, which emphasizes American and British authors of the late nineteenth and early twentieth centuries. The Ethel Taylor Crittenden Baptist Historical Collection and the Wake Forest College/University Archive are maintained here as well.

Facilities in the Z. Smith Reynolds Library include the Information Technology Center which is equipped for multimedia viewing, editing and scanning, and has a computer lab for student use. Training in computer and multimedia technologies is provided through the ITC. Several small group study rooms are located throughout the library and may be reserved. Two 24-hour study areas and a cyber café are accessible by key-card.

The Coy C. Carpenter Library of the Wake Forest University School of Medicine houses special collections including the written and oral history of the School of Medicine, the history of neurology, and the Suzanne Meads Art in Medicine collection. The Dorothy Carpenter Medical Archives also contain the papers of the American Neurological Association, the American Society of Neuroimaging, the Association of Medical Illustrators, the Society of Neurological Surgeons, the Association for Research in Nervous and Mental Disease, the North Carolina Surgical Association, and the North Carolina Baptist Hospital Nursing School.

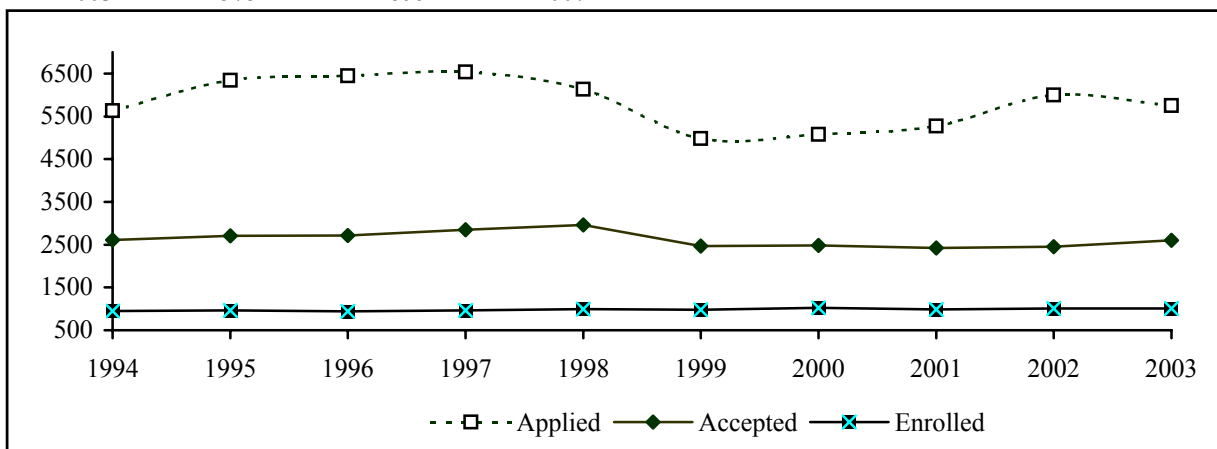
## Admissions, Fall 2003

	Number of Applicants				Number Accepted				Number Enrolled			
	Male	Female	NC	OS	Male	Female	NC	OS	Male	Female	NC	OS
Freshmen	5700		5700		2599		2599		1007		1007	
	2518	3182	1222	4478	1286	1313	695	1904	489	518	269	738
Und. Transfers	152		152		100		100		49		49	
	66	86	55	97	43	57	31	69	20	29	18	31
Grad. School	985		985		341		341		269		269	
	406	579	387	598	137	204	175	166	116	153	156	113
Divinity	79		79		57		57		38		38	
	52	27	43	36	40	17	24	33	24	14	21	17
Law School	2442		2442		584		584		189		189	
	1289	1153	611	1831	315	269	134	450	96	93	57	132
Babcock MBA	798		798		482		482		269		269	
	575	223	305	493	346	136	263	219	187	82	183	86
School of Med.	5152		5152		297		297		108		108	
	2702	2450	580	4572	147	150	96	201	65	43	40	68



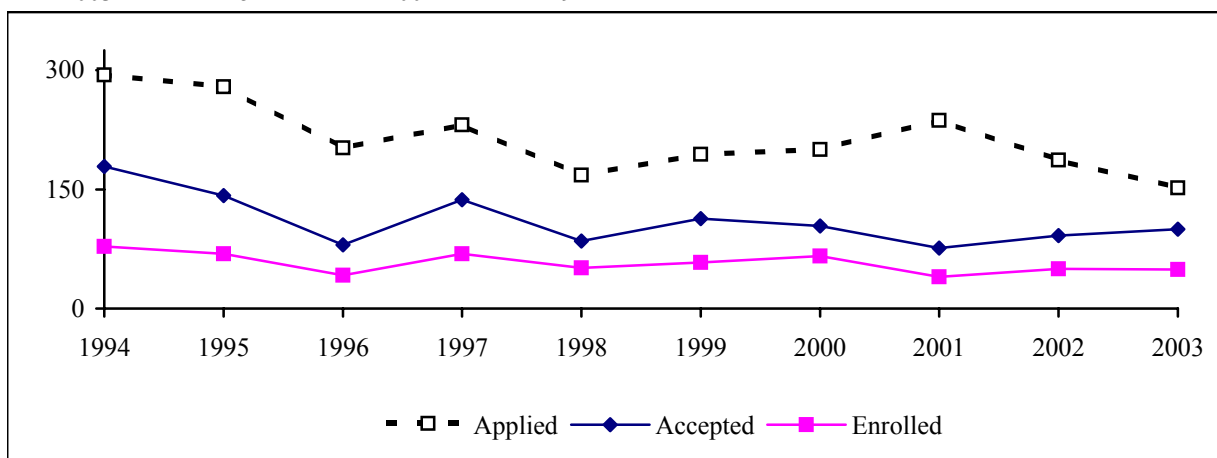
## Admissions, First-time Freshmen, Fall 1994-2003

Year	Applied	Accepted	Enrolled
1994	5628	2607	946
1995	6342	2710	965
1996	6450	2715	940
1997	6536	2848	967
1998	6132	2962	993
1999	4982	2465	979
2000	5079	2480	1025
2001	5271	2421	989
2002	5995	2454	1007
2003	5752	2599	1007



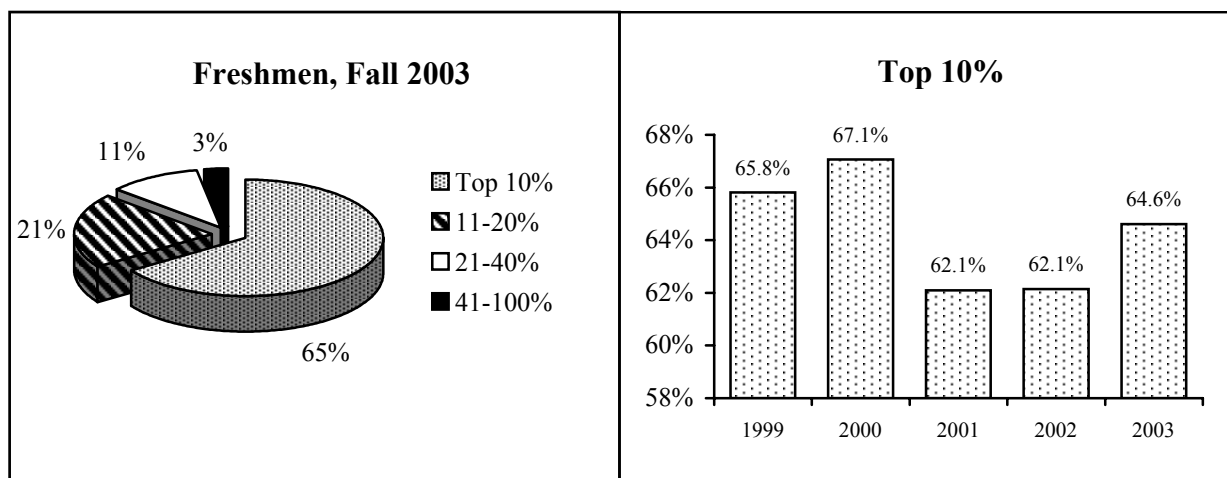
## Admissions, Undergraduate Transfer Students, Fall 1994-2003

Year	Applied	Accepted	Enrolled
1994	294	179	78
1995	279	142	69
1996	202	80	42
1997	231	137	69
1998	168	85	51
1999	194	113	58
2000	200	104	66
2001	237	76	40
2002	187	92	50
2003	152	100	49

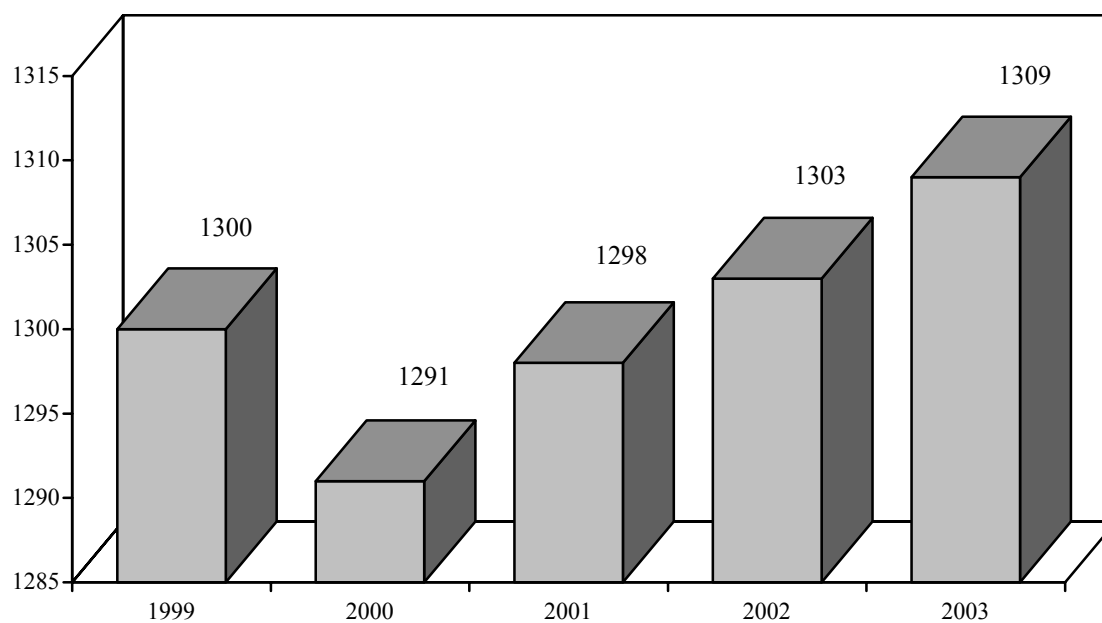


## High School Rank of Entering Freshmen, 1999-2003

	1999		2000		2001		2002		2003	
Rank	#	%	#	%	#	%	#	%	#	%
Top 10%	489	65.8%	505	67.1%	503	62.1%	458	62.1%	440	64.6%
11-20%	161	21.7%	143	19.0%	192	23.7%	171	23.2%	140	20.6%
21-40%	67	9.0%	78	10.4%	96	11.9%	85	11.5%	72	10.6%
41-60%	15	2.0%	22	2.9%	12	1.5%	15	2.0%	21	3.1%
61-80%	6	0.8%	5	0.7%	2	0.2%	7	0.9%	6	0.9%
81-100%	5	0.7%	0	0.0%	5	0.6%	1	0.1%	2	0.3%
Not Available	236		272		179		270		326	
<b>Total</b>	<b>979</b>		<b>1025</b>		<b>989</b>		<b>1007</b>		<b>1007</b>	



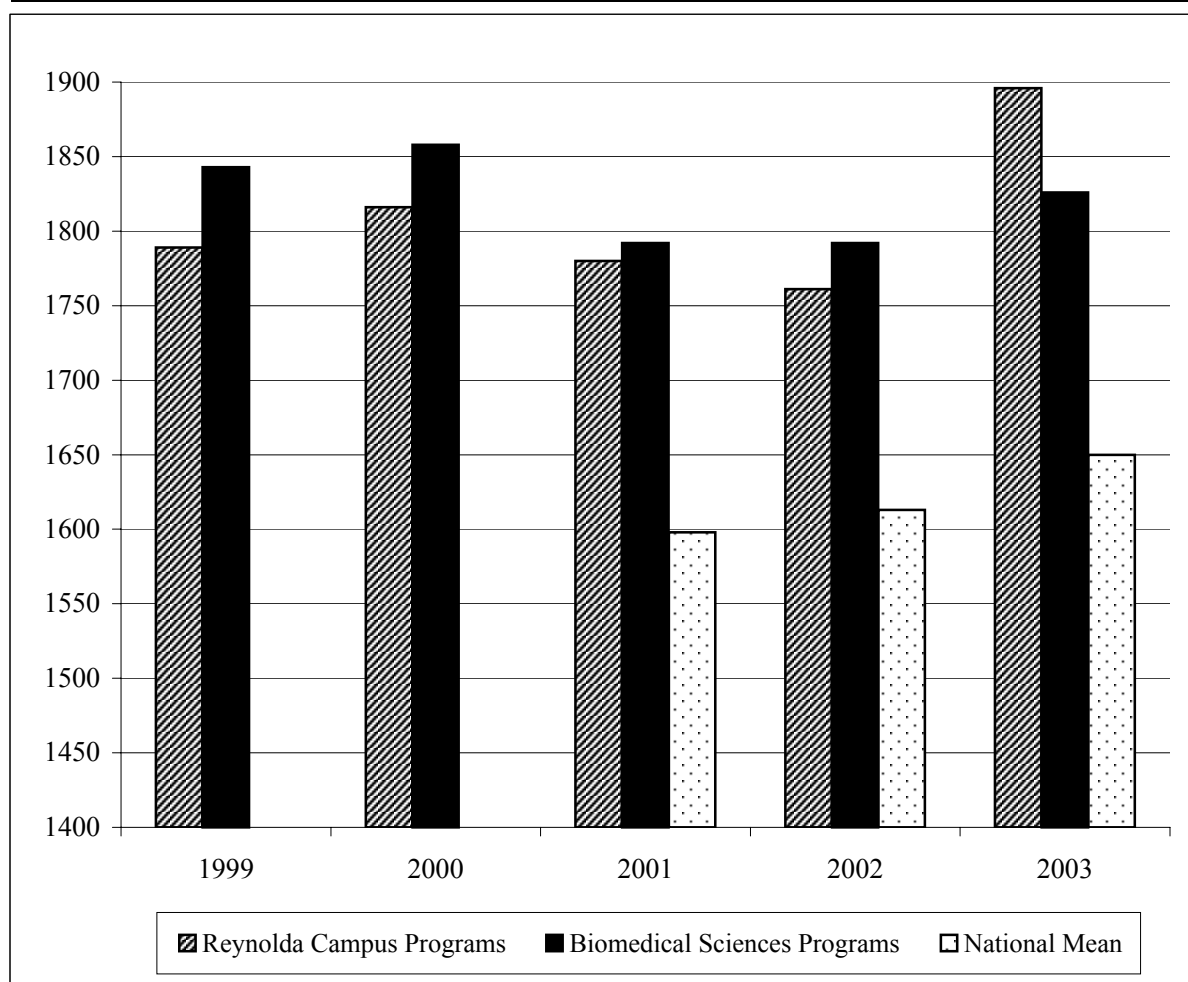
## Average SAT Scores for Entering Freshmen, 1999-2003





## Average GRE Scores for Entering Students, Graduate School, 1999-2003

Reynolda Campus Programs		Verbal (%)	Quantitative (%)	Analytical (%)	Total
	1999	533	634	622	1789
	2000	535 (69)	634 (64)	647 (74)	1816
	2001	523 (66)	630 (62)	627 (68)	1780
	2002	515 (62)	624 (57)	622 (62)	1761
	2003	561(76)	662(64)	673(71)	1896
Biomedical Sciences Programs					
	1999	544	642	657	1843
	2000	531 (68)	660 (71)	667 (79)	1858
	2001	517 (64)	635 (63)	640 (72)	1792
	2002	525 (65)	646 (59)	621 (61)	1792
	2003	516 (64)	658 (64)	652 (68)	1826
National Mean (approximate) 2003		470	610	570	1650



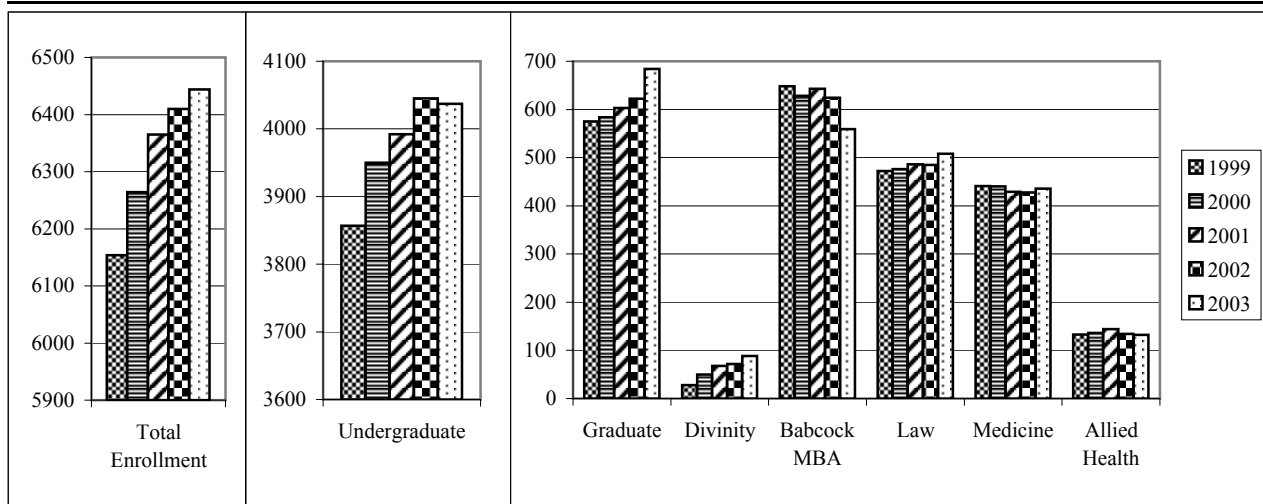
## Fall Enrollment, 1984-2003

Year	Undergraduate	Graduate	Divinity	Law	Management	Medicine	Allied Health	Total
1984-85	3,316	364		511	279	426	65	4,961
1985-86	3,406	388		498	270	430	70	5,062
1986-87	3,472	339		491	270	425	57	5,054
1987-88	3,517	358		476	364	426	68	5,029
1988-89	3,579	398		464	423	419	54	5,337
1989-90	3,544	438		461	418	430	69	5,360
1990-91	3,592	470		461	451	439	64	5,477
1991-92	3,650	518		463	501	433	114	5,679
1992-93	3,624	467		473	507	436	117	5,624
1993-94	3,538	588		464	506	439	126	5,661
1994-95	3,620	552		472	513	448	143	5,748
1995-96	3,701	585		470	565	437	134	5,892
1996-97	3,771	578		460	615	450	127	6,001
1997-98	3,841	587		475	627	452	125	6,107
1998-99	3,855	583		475	654	445	122	6,134
1999-00	3,857 (3,670)	575	28	472	648	441	133	6,154
2000-01	3,950 (3,744)	584	50	476	628	440	136	6,264
2001-02	3,992 (3,746)	603	68	486	643	429	144	6,365
2002-03	4,045 (3,748)	622	72	485	624	428	134*	6,410
2003-04	4,037 (3,735)	684	88	508	559	436	132*	6,444

\*Includes Nurse Anesthesia and Physician Assistant programs in which students earn graduate degrees. The Medical Technology program is counted in "Undergraduate" since no graduate degree is awarded.

( ) = Reynolda Campus undergraduate students (excludes Study Abroad and Allied Health students)

## Enrollment by School, Fall 2000-2003



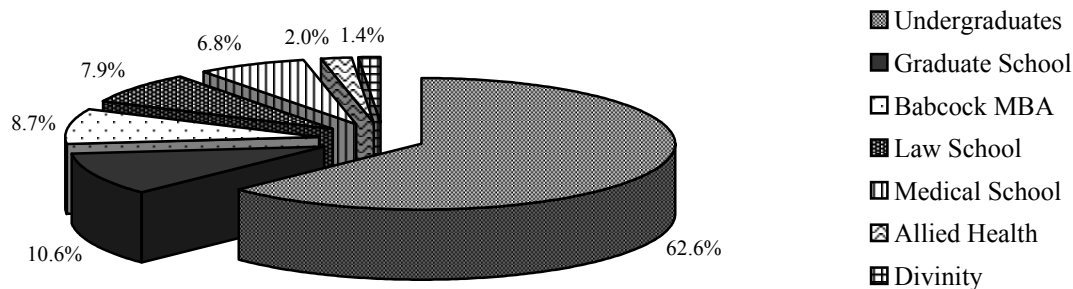
## Enrollment by Class and by School, Fall 2003

	Male	Female	Total	FTE**
Freshmen	500	536	1,036	1,029
Sophomores	483	498	981	972
Juniors	490	507	997	994
Seniors	483	511	994	982
Unclassified*	12	17	29	18
<b>Total Undergraduates</b>	<b>1,968</b>	<b>2,069</b>	<b>4,037</b>	<b>3,994</b>
<i>Allied Health (Undergraduate)</i>	0	6	6	6
<i>Study Abroad</i>	95	201	296	296
<i>Reynolda Campus</i>	1,873	1,862	3,735	3,692
Graduate - Arts & Sciences	188	262	450	418
Graduate - Medicine	92	142	234	224
Divinity	53	35	88	85
Babcock MBA	428	131	559	543
Law School	276	232	508	503
Medical School	262	174	436	436
Allied Health (Graduate)*	45	87	132	132
<b>University Total</b>	<b>3,312</b>	<b>3,132</b>	<b>6,444</b>	<b>6,333</b>

\*Medical Technology students (Allied Health) are counted as unclassified undergraduates. The other Allied Health students (Nurse Anesthesia and Physician Assistant) are counted in the "Allied Health (Graduate)" category.

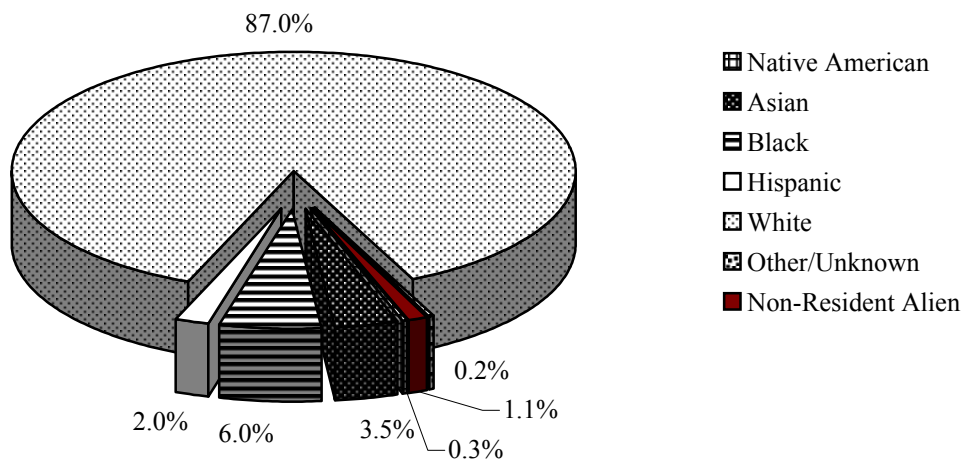
\*\*Full-time equivalent

Source: IPEDS-Fall Enrollment 2003



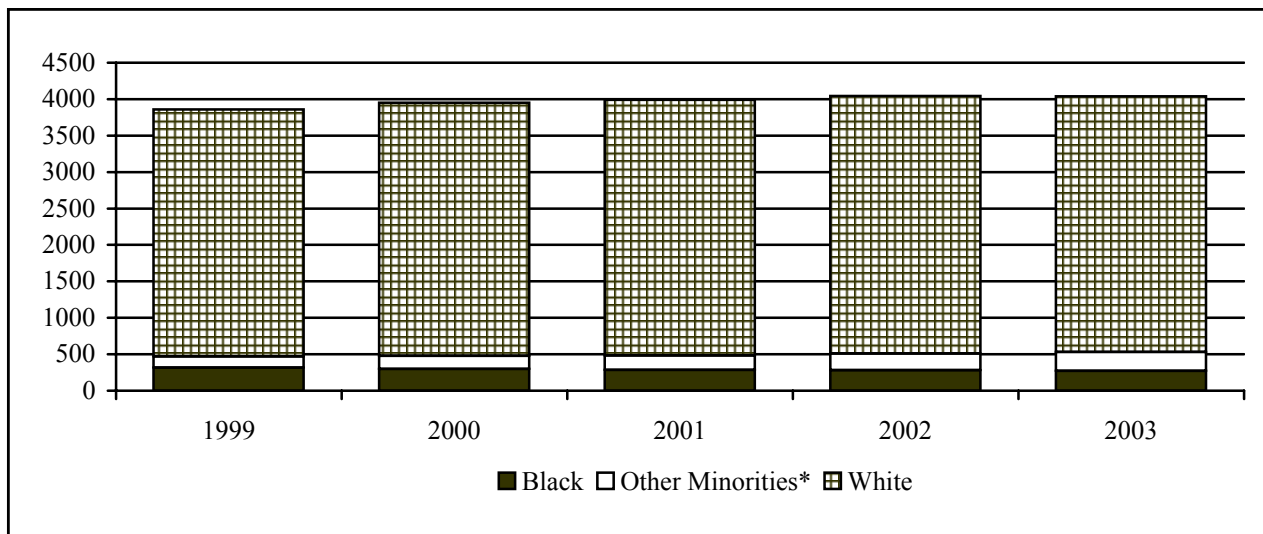
## First-time Freshmen Ethnic Enrollment, Fall 2003

Ethnicity	Male		Female		Total by Ethnicity	
	#	%	#	%	#	%
Native American	1	0.2%	2	0.4%	3	0.3%
Asian	14	2.9%	21	4.1%	35	3.5%
Black	29	5.9%	31	6.0%	60	6.0%
Hispanic	9	1.8%	11	2.1%	20	2.0%
White	430	87.9%	446	86.1%	876	87.0%
Other/Unknown	2	0.4%	0	0.0%	2	0.2%
Non-Resident Alien	4	0.8%	7	1.4%	11	1.1%
<b>Total by Gender</b>	<b>489</b>	<b>48.6%</b>	<b>518</b>	<b>51.4%</b>	<b>1007</b>	<b>100%</b>



## Undergraduate Ethnic Enrollment, Fall 1999-2003

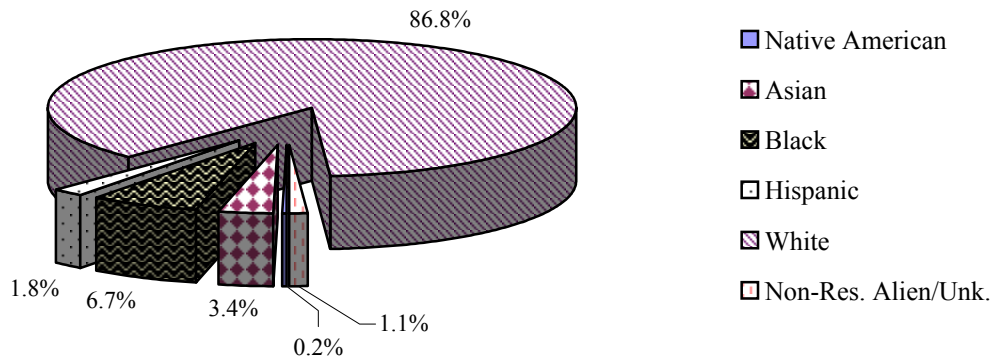
Year	Black	Other Minorities*	Total Minorities	White	% Minority
1999	316	152	468	3,389	12.1%
2000	299	180	479	3,471	12.1%
2001	284	198	482	3,510	12.1%
2002	280	231	511	3,534	12.6%
2003	271	260	531	3,506	13.2%



\*Includes all non-resident aliens

## Undergraduate Ethnic Enrollment, Fall 2003

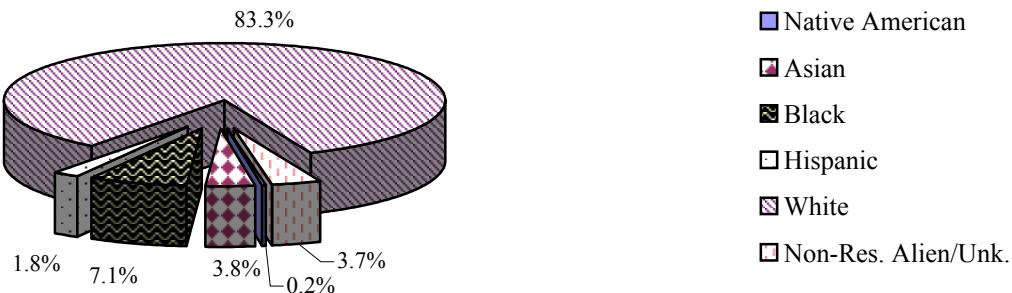
Ethnicity	Male		Female		Total by Ethnicity	
	#	%	#	%	#	%
Native American	4	0.2%	6	0.3%	10	0.2%
Asian	59	3.0%	77	3.7%	136	3.4%
Black	138	7.0%	133	6.4%	271	6.7%
Hispanic	39	2.0%	32	1.5%	71	1.8%
White	1,706	86.7%	1,800	87.0%	3,506	86.8%
Non-Res. Alien/Unk.	22	1.1%	21	1.0%	43	1.1%
<b>Total by Gender</b>	<b>1,968</b>	<b>48.7%</b>	<b>2,069</b>	<b>51.3%</b>	<b>4,037</b>	<b>100.0%</b>



## University Ethnic Enrollment\*, Fall 2003

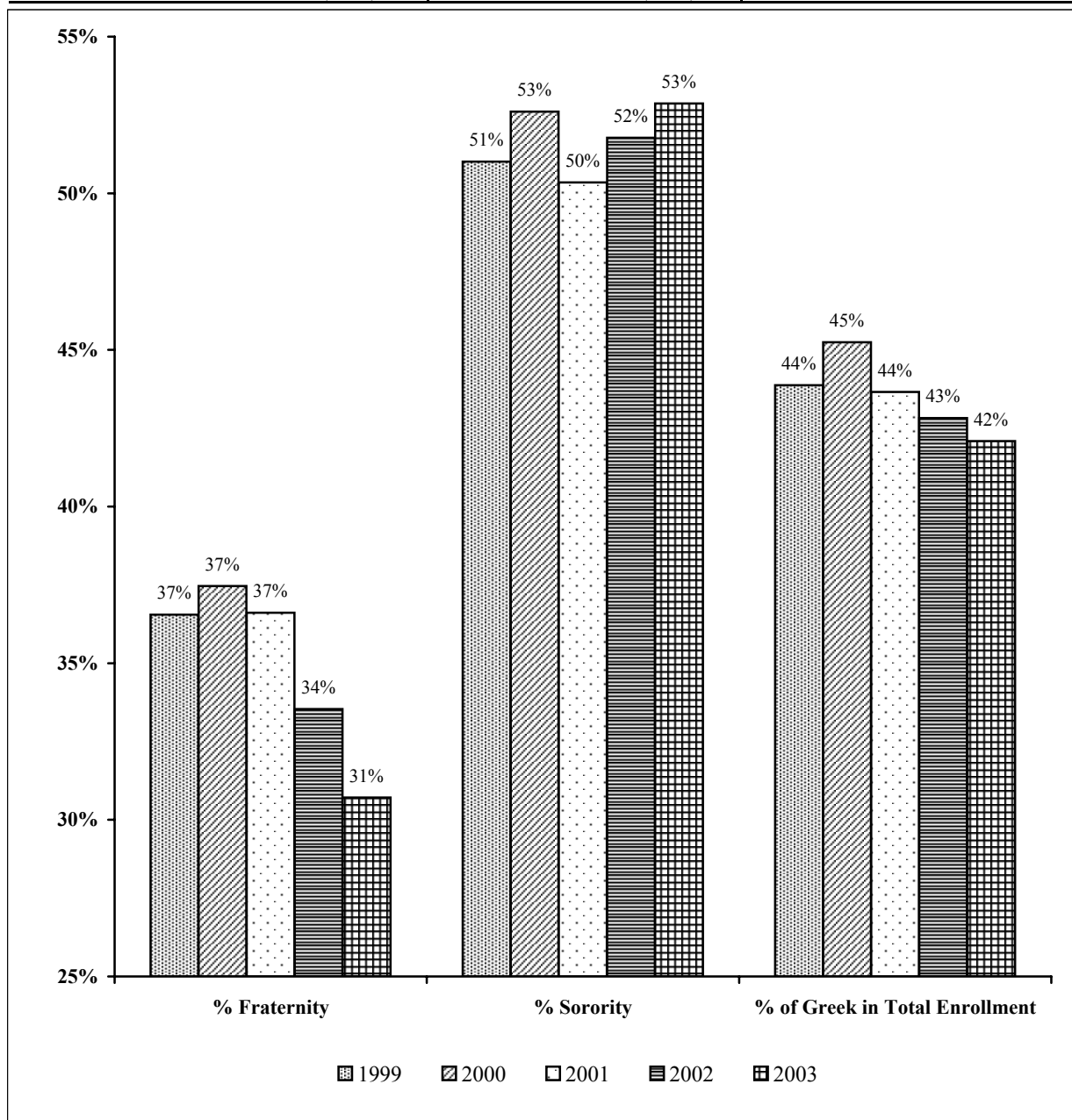
Ethnicity	Male		Female		Total by Ethnicity	
	#	%	#	%	#	%
Native American	6	0.1%	8	0.1%	14	0.2%
Asian	127	2.0%	116	1.8%	243	3.8%
Black	202	3.1%	258	4.0%	460	7.1%
Hispanic	68	1.1%	51	0.8%	119	1.8%
White	2762	42.9%	2608	40.5%	5370	83.3%
Non-Res. Alien/Unk.	147	2.3%	91	1.4%	238	3.7%
<b>Total by Gender</b>	<b>3312</b>	<b>51.4%</b>	<b>3132</b>	<b>48.6%</b>	<b>6444</b>	<b>100.0%</b>

\*Includes all schools and programs based on IPEDS - Fall Enrollment 2003



## Undergraduate Greek Affiliation, Spring 1999-2003

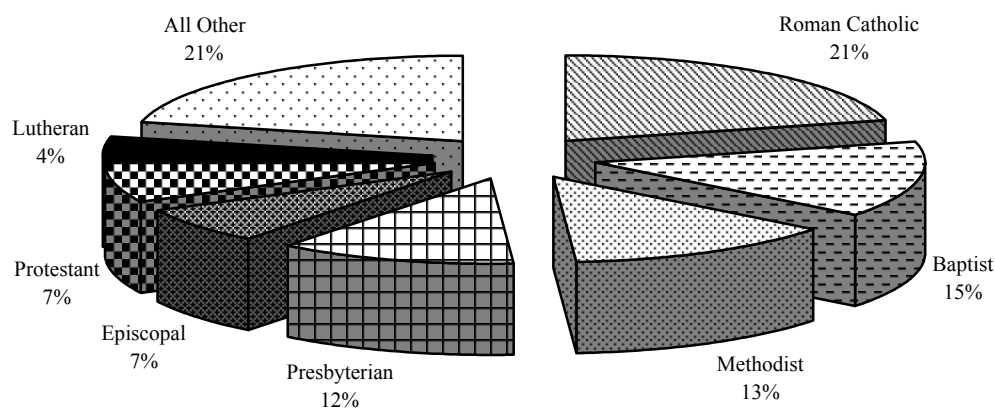
Year	Fraternity	Male Enrollment	Sorority	Female Enrollment	Total Greek	Percent of Greek in Total Enrollment
		Total (%)		Total (%)		
1999	689	1,885 (37%)	988	1,937 (51%)	1,677	44%
2000	707	1,887 (37%)	1049	1,994 (53%)	1,756	45%
2001	707	1,931 (37%)	1024	2,034 (50%)	1,731	44%
2002	656	1,956 (34%)	1052	2,032 (52%)	1,708	43%
2003	589	1,918 (31%)	1070	2,024 (53%)	1,659	42%



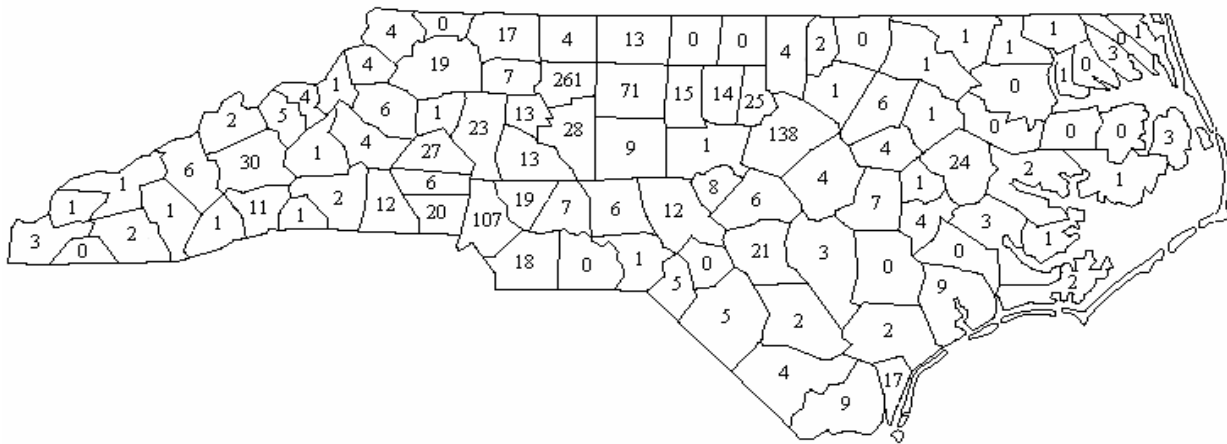
## Undergraduate Religious Preference, Fall 1999-2003

	Fall 1999	Fall 2000	Fall 2001	Fall 2002	Fall 2003
Not Reported	4.8%	4.2%	7.3%	8.8%	9.9%
Baptist	15.2%	14.8%	14.1%	14.7%	14.5%
Buddhist	0.1%	0.2%	0.1%	0.1%	0.2%
Christian Scientist	0.2%	0.2%	0.2%	0.2%	0.2%
Episcopal	7.8%	7.7%	7.5%	7.2%	6.8%
Friends	0.2%	0.2%	0.2%	0.3%	0.3%
Greek Orthodox	0.5%	0.4%	0.3%	0.4%	0.5%
Hindu	0.5%	0.4%	0.4%	0.5%	0.5%
Jewish	1.1%	1.1%	1.3%	1.5%	1.6%
Lutheran	3.6%	3.8%	3.9%	3.8%	3.7%
Methodist	13.3%	13.6%	13.5%	13.0%	13.2%
Moravian	0.6%	0.4%	0.4%	0.4%	0.2%
Mormon	0.2%	0.2%	0.2%	0.2%	0.1%
Moslem	0.2%	0.3%	0.4%	0.4%	0.3%
No Preference	8.8%	6.4%	4.6%	3.1%	2.7%
Presbyterian	12.5%	12.6%	12.1%	12.0%	11.9%
Protestant	6.4%	6.7%	7.3%	7.2%	7.4%
Roman Catholic	21.6%	21.7%	21.3%	21.2%	21.1%
United Church of Christ	1.4%	1.4%	1.3%	1.4%	1.3%
Unitarian	0.3%	0.2%	0.2%	0.2%	0.2%
Other	3.6%	3.6%	3.6%	3.5%	3.3%

## Religious Preference, Fall 2003



## North Carolina Undergraduate Students by County of Residence, Fall 2003



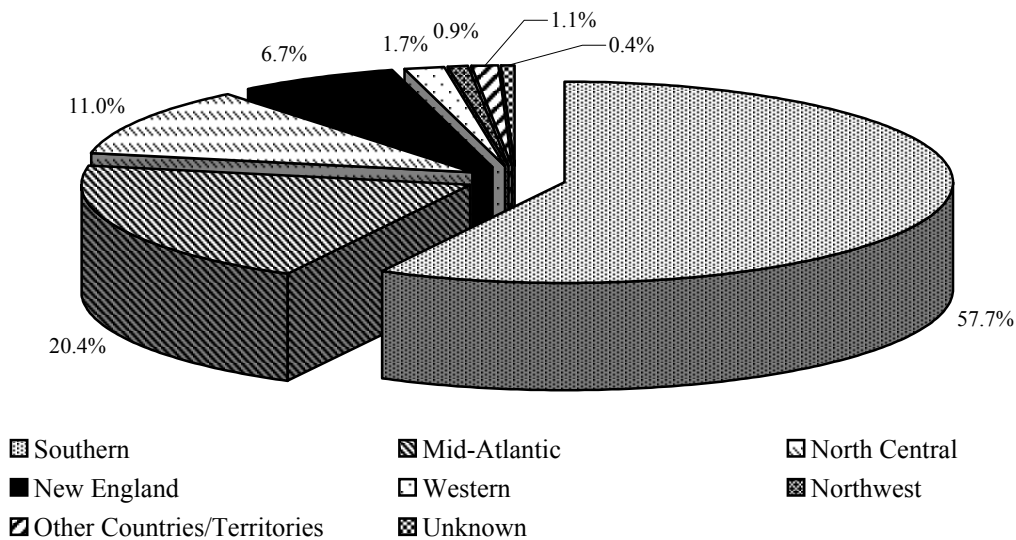
Alamance	15	Cumberland	21	Johnston	4	Randolph	9
Alexander	1	Currituck	1	Jones	0	Richmond	1
Alleghany	0	Dare	3	Lee	8	Robeson	5
Anson	0	Davidson	28	Lenoir	4	Rockingham	13
Ashe	4	Davie	13	Lincoln	6	Rowan	13
Avery	1	Duplin	0	Macon	2	Rutherford	2
Beaufort	2	Durham	25	Madison	2	Sampson	3
Bertie	0	Edgecombe	1	Martin	0	Scotland	5
Bladen	2	Forsyth	261	McDowell	1	Stanly	7
Brunswick	9	Franklin	1	Mecklenburg	107	Stokes	4
Buncombe	30	Gaston	20	Mitchell	4	Surry	17
Burke	4	Gates	1	Montgomery	6	Swain	1
Cabarrus	19	Graham	1	Moore	12	Transylvania	1
Caldwell	6	Granville	4	Nash	6	Tyrrell	0
Camden	0	Greene	1	New Hanover	17	Union	18
Carteret	2	Guilford	71	Northampton	1	Vance	2
Caswell	0	Halifax	1	Onslow	9	Wake	138
Catawba	27	Harnett	6	Orange	14	Warren	0
Chatham	1	Haywood	6	Pamlico	1	Washington	0
Cherokee	3	Henderson	11	Pasquotank	3	Watauga	4
Chowan	1	Hertford	1	Pender	2	Wayne	7
Clay	0	Hoke	0	Perquimans	0	Wilkes	19
Cleveland	12	Hyde	1	Person	0	Wilson	4
Columbus	4	Iredell	23	Pitt	24	Yadkin	7
Craven	3	Jackson	1	Polk	1	Yancey	5



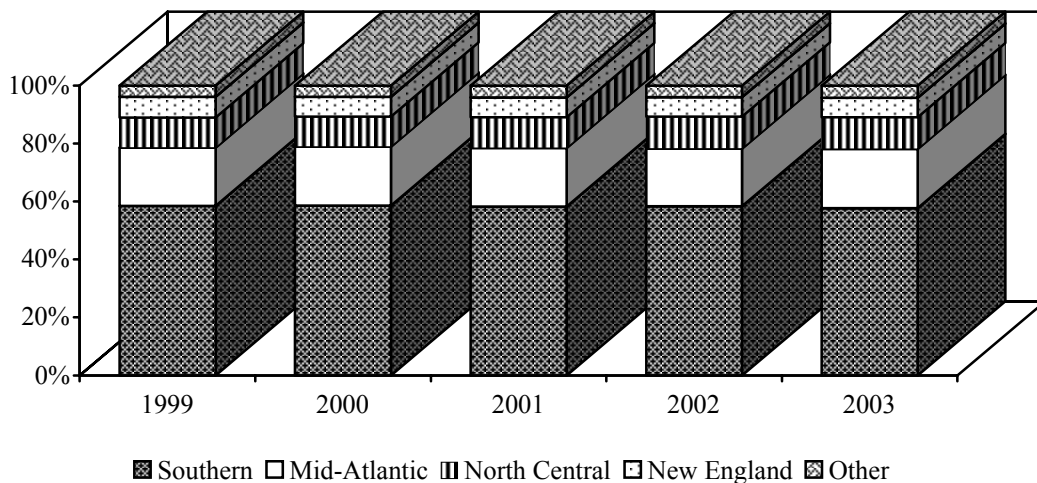
## Undergraduate Geographical Distribution by Region, Fall 1999-2003

Region	1999	%	2000	%	2001	%	2002	%	2003	%
Southern	2,258	58.5%	2,317	58.7%	2,327	58.3%	2,364	58.4%	2,331	57.7%
Mid-Atlantic	774	20.1%	802	20.3%	808	20.2%	803	19.9%	824	20.4%
North Central	400	10.4%	411	10.4%	424	10.6%	447	11.1%	444	11.0%
New England	279	7.2%	269	6.8%	271	6.8%	270	6.7%	271	6.7%
Western	68	1.8%	80	2.0%	77	1.9%	66	1.6%	67	1.7%
Northwest	23	0.6%	24	0.6%	35	0.9%	33	0.8%	38	0.9%
Other Countries/Territories	55	1.4%	25	0.6%	37	0.9%	40	1.0%	45	1.1%
Unknown	0	0.0%	22	0.6%	13	0.3%	22	0.5%	17	0.4%
<b>Total</b>	<b>3857</b>		<b>3950</b>		<b>3992</b>		<b>4045</b>		<b>4037</b>	

## Undergraduate Geographical Distribution by Region, (%) Fall 2003



## Undergraduate Geographical Distribution by Region, Fall 1999-2003



## Undergraduate Geographical Distribution by Region & State, Fall 1999-2003

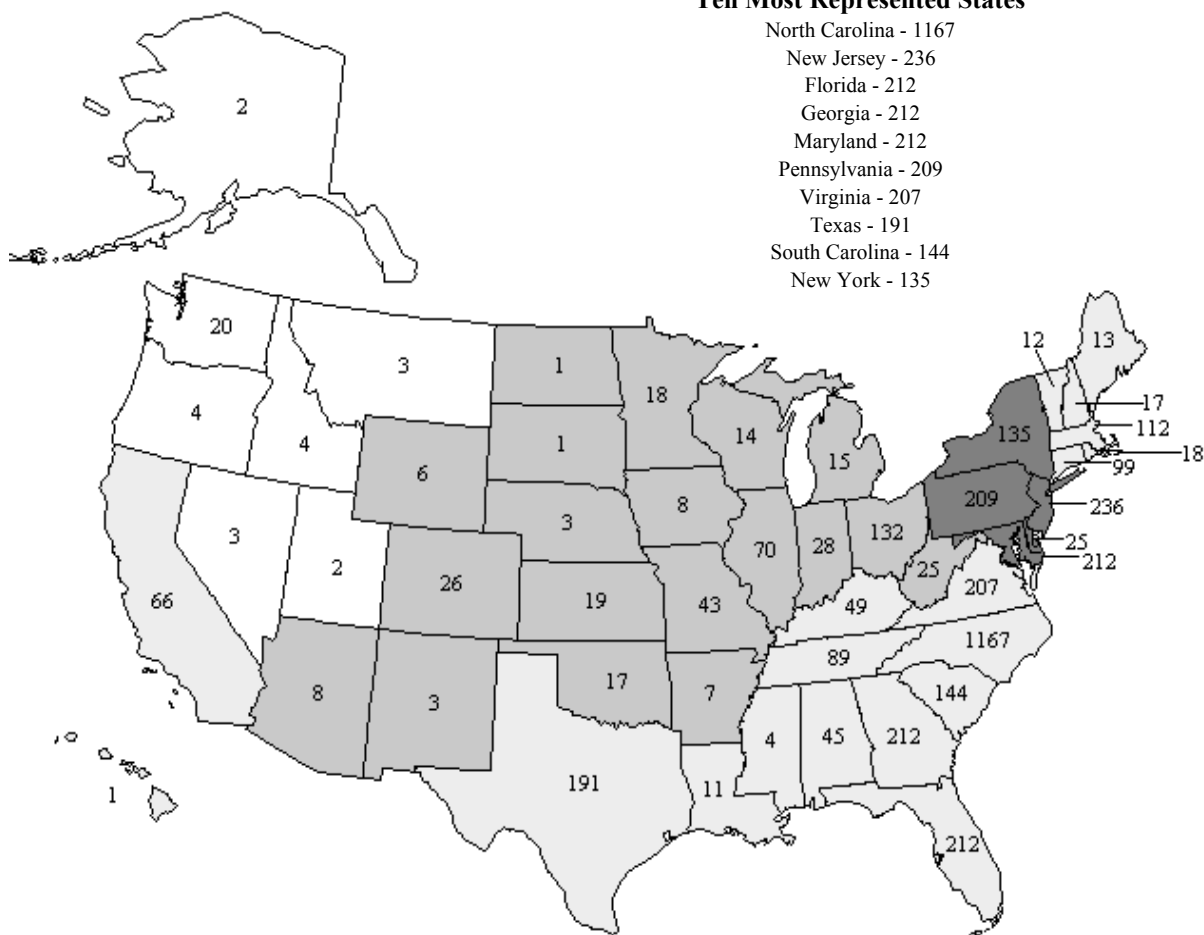
		1999-00	2000-01	2001-02	2002-03	2003-04	2003-04 Totals
<b>Southern</b>	Alabama	33	39	45	50	45	
	Florida	208	222	228	221	212	
	Georgia	207	195	202	191	212	
	Kentucky	39	46	35	43	49	
	Louisiana	25	20	12	11	11	
	Mississippi	9	8	6	3	4	
	North Carolina	1,091	1,054	1,048	1,175	1,167	(29% of total enrollment)
	South Carolina	167	188	189	155	144	
	Tennessee	119	120	126	99	89	
	Texas	142	175	199	189	191	
	Virginia	218	250	237	227	207	<b>2,331</b>
<b>Middle Atlantic</b>	Delaware	19	25	21	24	25	
	District of Columbia	10	13	12	9	7	
	Maryland	164	175	191	214	212	
	New Jersey	207	216	224	213	236	
	New York	163	163	149	140	135	
	Pennsylvania	211	210	211	203	209	<b>824</b>
<b>New England</b>	Connecticut	107	101	100	100	99	
	Maine	12	14	15	14	13	
	Massachusetts	108	106	108	105	112	
	New Hampshire	18	17	19	18	17	
	Rhode Island	20	17	16	18	18	
	Vermont	14	14	13	15	12	<b>271</b>
<b>Northwest</b>	Alaska	1	0	1	2	2	
	Idaho	1	1	4	3	4	
	Montana	0	0	1	1	3	
	Nevada	1	1	3	3	3	
	Oregon	8	8	8	5	4	
	Utah	1	3	3	1	2	
	Washington	11	11	15	18	20	<b>38</b>
<b>North Central</b>	Arizona	8	4	8	9	8	
	Arkansas	11	8	8	10	7	
	Colorado	19	24	23	21	26	
	Illinois	68	63	66	74	70	
	Indiana	27	22	26	30	28	
	Iowa	9	8	10	11	8	
	Kansas	16	16	20	18	19	
	Michigan	26	21	20	19	15	
	Minnesota	15	14	14	14	18	
	Missouri	30	37	37	45	43	
	Nebraska	7	3	5	4	3	
	New Mexico	3	3	1	3	3	
	North Dakota	1	1	2	3	1	
	Ohio	95	111	116	120	132	
	Oklahoma	14	14	16	15	17	
	South Dakota	2	2	3	3	1	
	West Virginia	35	42	30	32	25	
	Wisconsin	14	18	16	12	14	
	Wyoming	0	0	3	4	6	<b>444</b>
<b>Western</b>	California	66	76	73	65	66	
	Hawaii	2	4	4	1	1	<b>67</b>
<b>Territories</b>		1	2	1	3	4	
<b>Unknown</b>			22	13	22	17	
<b>Other Countries</b>		54	23	36	37	41	<b>62</b>
<b>Total</b>		<b>3,857</b>	<b>3,950</b>	<b>3,992</b>	<b>4,045</b>	<b>4,037</b>	

Note: Regions are defined by Accrediting Agencies

## Undergraduates from the United States, Fall 2003

### Ten Most Represented States

North Carolina - 1167  
 New Jersey - 236  
 Florida - 212  
 Georgia - 212  
 Maryland - 212  
 Pennsylvania - 209  
 Virginia - 207  
 Texas - 191  
 South Carolina - 144  
 New York - 135



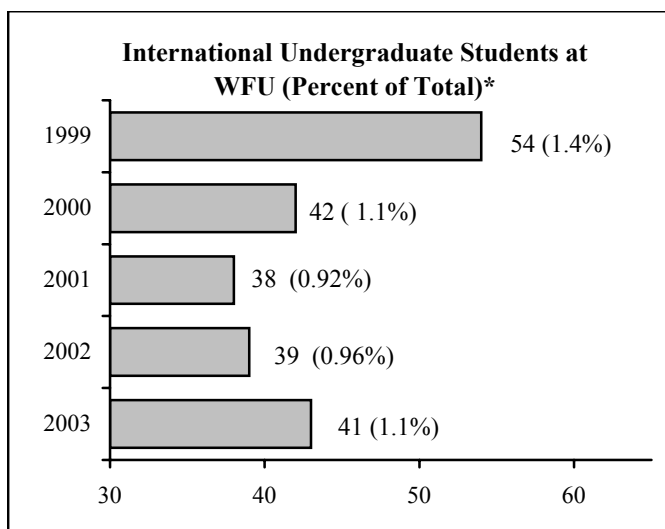
District of Columbia: 7

## Undergraduate International Students

### Countries Represented\*

Australia	Lithuania
Bermuda	Netherlands
Canada	Panama
China	Russia
Ecuador	South Africa
France	Spain
Germany	Sweden
Guatemala	Taiwan
India	Trinidad and Tobago
Ireland	United Kingdom
Israel	Venezuela
Japan	Vietnam
Kuwait	Yugoslavia (former)

\*Source: Center for International Studies



## Total Number of Degrees Granted, 1983-2003

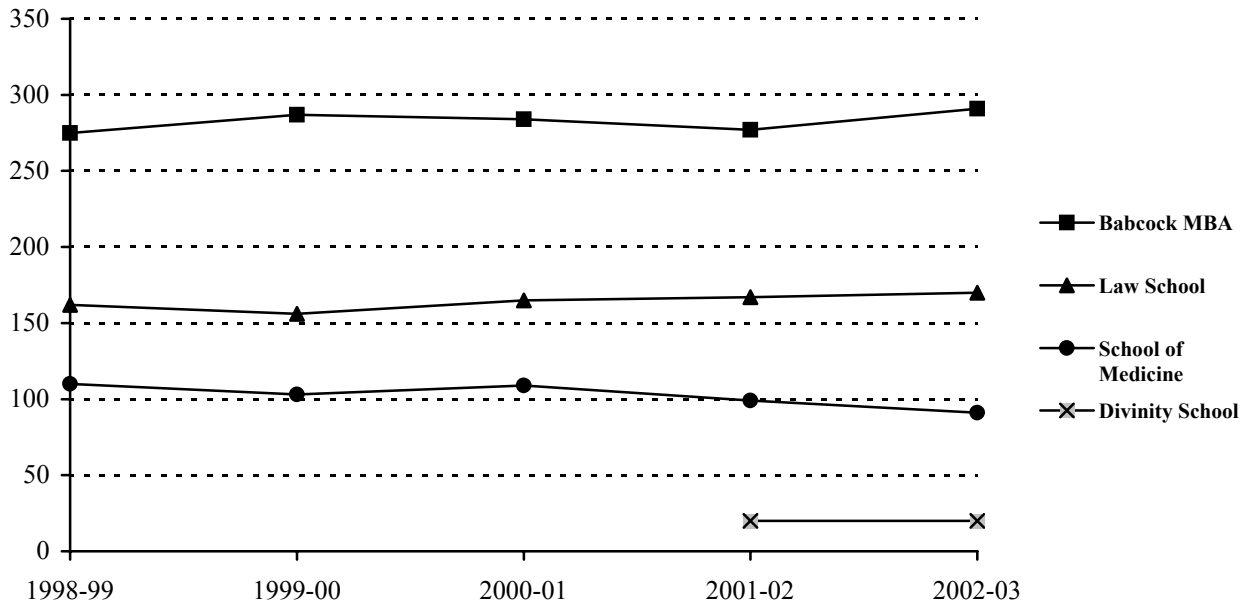
Year	Undergraduate	Master	Divinity	Doctorate	Medicine	Law	Total	Cumulative Total	Honorary
1983-84	679	190		13	105	160	1,147	32,696	6
1984-85	727	190		7	106	169	1,199	33,895	6
1985-86	687	219		10	104	160	1,180	35,075	5
1986-87	758	192		14	104	164	1,232	36,307	7
1987-88	738	205		26	106	159	1,234	37,541	5
1988-89	858	200		9	98	158	1,323	38,864	9
1989-90	843	271		14	99	148	1,375	40,239	7
1990-91	782	262		16	101	155	1,316	41,555	5
1991-92	819	304		19	99	147	1,388	42,943	5
1992-93	869	326		18	107	160	1,480	44,423	5
1993-94	817	315		16	91	150	1,389	45,812	4
1994-95	829	337		17	114	149	1,446	47,258	6
1995-96	763	333		23	96	159	1,374	48,632	8
1996-97	887	399		20	105	155	1,566	50,198	6
1997-98	898	432		32	106	145	1,613	51,811	6
1998-99	878	439		30	110	157	1,614	53,425	5
1999-00	884	454		28	103	150	1,619	55,044	7
2000-01	901	469		25	109	153	1,657	56,701	3
2001-02	906	440	20	25	99	155	1,665	58,346	5
2002-03	916	477	20	35	91	159	1,698	60,044	5

## Number and Type of Degrees Granted, 2002 and 2003

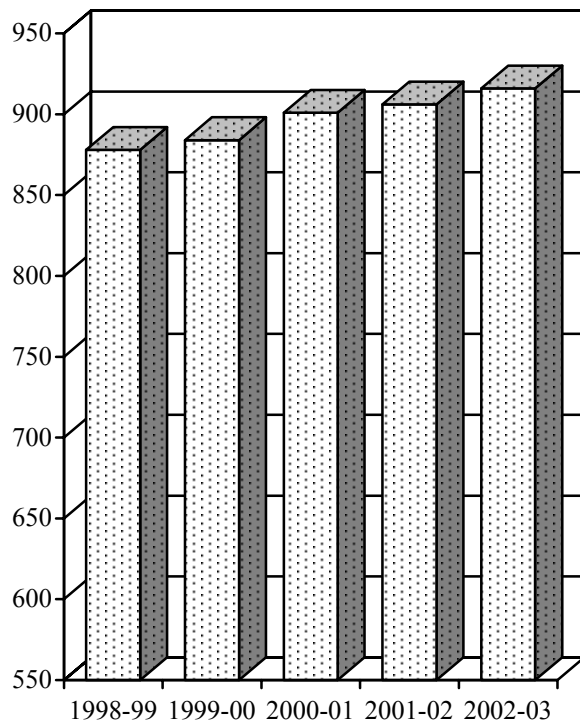
Department/Program	2001-2002									2002-2003								
	Bachelor*			Master			Doctorate			Bachelor*			Master			Doctorate		
	M	F	Total	M	F	Total	M	F	Total	M	F	Total	M	F	Total	M	F	Total
Accountancy	9	8	17	24	18	42				6	12	18	25	27	52			
Analytical Finance	20	13	33							33	7	40						
Anthropology	3	12	15	2	2	4				6	8	14						
Art History	1	8	9							1	5	6						
Biology	25	39	64	2	2	4	1	0	1	37	33	70	4	3	7	1	0	1
Business	55	40	95							56	52	108						
Chemistry	14	8	22				1	3	4	12	8	20	1	2	3	2	1	3
Classical Studies	1	1	2															
Communication	51	62	113	5	6	11				44	65	109	3	6	9			
Computer Science	17	1	18	2	1	3				14	3	17	5	3	8			
Counseling													1	14	15			
Economics	46	15	61							23	10	33						
Education	0	7	7	6	28	34				4	7	11	5	21	26			
Engineering																		
English	26	32	58	0	1	1				19	33	52	3	4	7			
French	1	5	6							1	6	7						
German	1	1	2							0	3	3						
Health & Exercise Science	12	25	37	1	5	6				10	30	40	2	5	7			
History	19	16	35	1	1	2				32	22	54	1	0	1			
Information Systems	16	10	26							17	6	23						
Latin										1	1	2						
Liberal Studies				5	9	14							4	9	13			
Mathematical Business	2	1	3							0	3	3						
Mathematical Economics	5	4	9							8	2	10						
Mathematics	6	3	9	4	3	7				4	8	12	3	2	5			
Medical Technology										0	1	1						
Music	5	2	7							1	4	5						
Philosophy	4	2	6							4	2	6						
Physics	7	1	8	1	0	1	3	0	3	2	5	7				2	1	3
Political Science	38	35	73							38	50	88						
Psychology	24	56	80	3	11	14				23	59	82	2	8	10			
Religion	6	7	13	2	0	2				5	9	14	0	1	1			
Russian										1	0	1						
Sociology	14	25	39							12	18	30						
Spanish	3	16	19							1	16	17						
Studio Art	5	8	13							2	7	9						
Theatre	2	5	7							1	3	4						
<b>Sub-Total</b>	438	468	906	58	87	145	5	3	8	418	498	916	59	105	164	5	2	7
Biochemistry/Molecular Biology							2	0	2								4	4
Biomedical Engineering							1	0	1							1		1
Cancer Biology																2	2	4
Clinical Epidemiology and Health Services Research				2	4	6							3	3	6			
Microbiology/Immunology							2	0	2							2	2	4
Molecular/Cellular Pathobiology							2	1	3				0	3	3		2	2
Molecular Genetics							1	0	1				1	0	1	2	1	3
Molecular Medicine							1	1	2									
Neurobiology/Anatomy							0	1	1							1	1	2
Neuroscience							1	0	1				0	1	1	1	1	2
Pharmacology							2	2	4							4	1	5
Physiology																0	1	1
<b>Sub-Total</b>				2	4	6	12	5	17				4	7	11	13	15	28
Divinity				5	15	20							10	10	20			
Law				4	8	12	83	72	155				5	6	11	86	73	159
MBA				212	65	277							225	66	291			
Medicine							64	35	99							52	39	91
<b>Grand Total</b>	438	468	906	281	179	460	164	115	279	418	498	916	303	194	497	156	129	285

\*Degrees are conferred based on the field of the primary major only. For an analysis of double majors, see page 27. For administrative purposes, a student with two majors must designate one of the two fields as the primary major

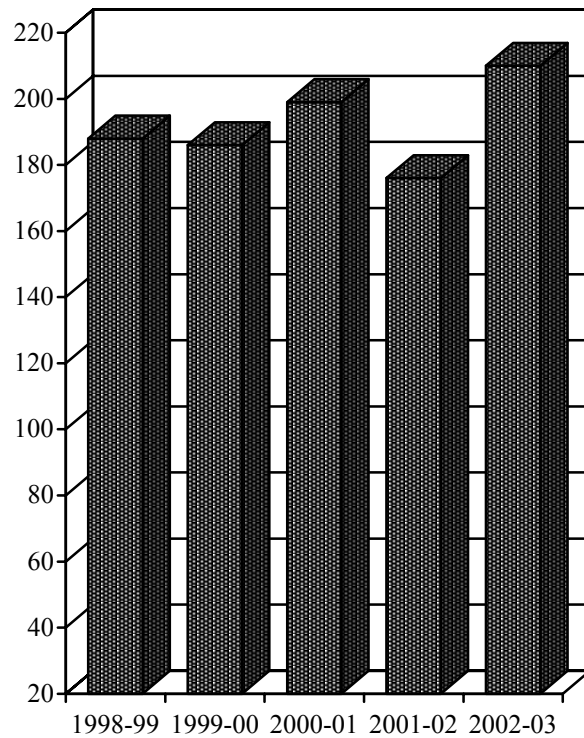
## Number and Type of Degrees Granted, 1998-2003



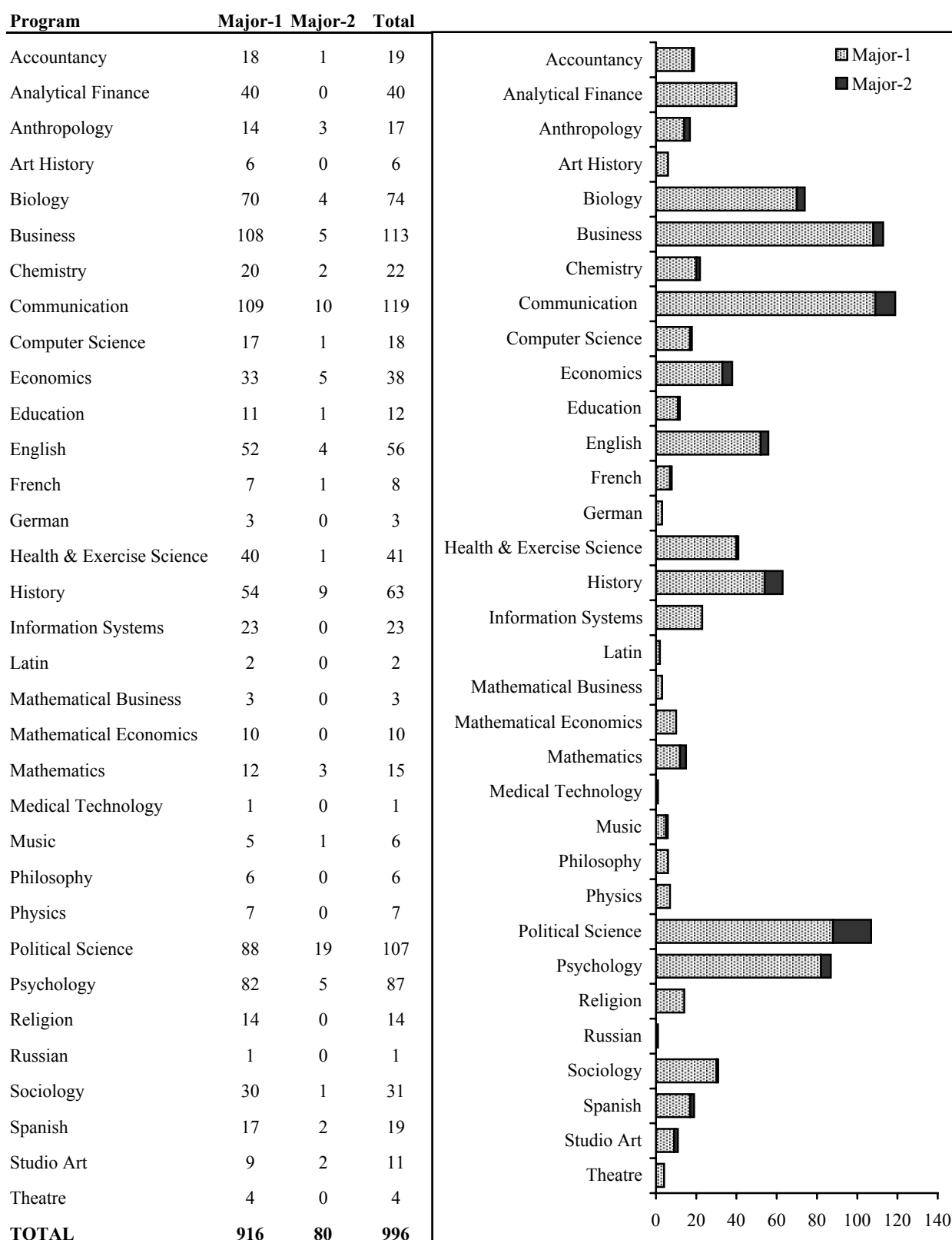
### Undergraduate Degrees



### Graduate Degrees



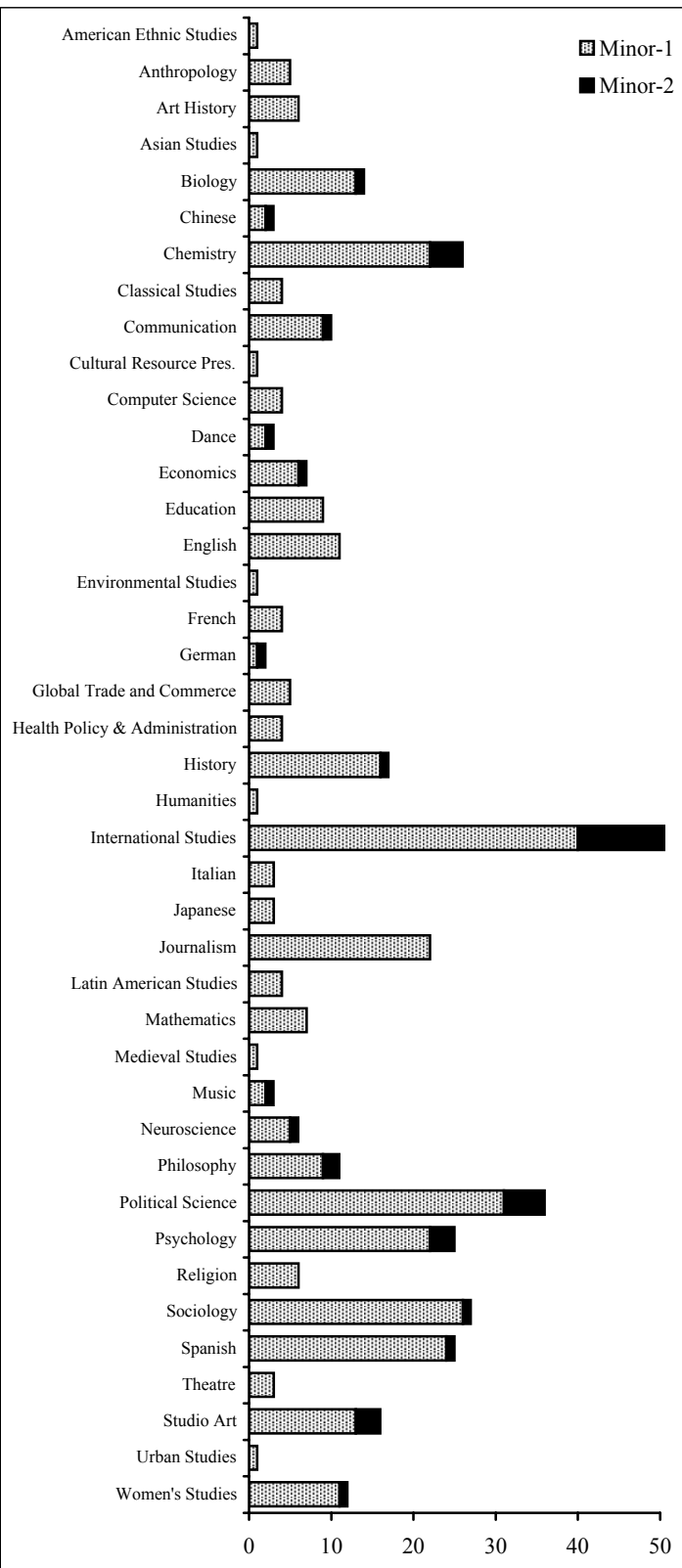
## Graduates by Double Major, 2002-2003



Note: For administrative purposes, a student with two majors must designate one of the two fields as the primary major.

## Graduates by Minor, 2002-2003

Program	Minor-1	Minor-2	Total
American Ethnic Studies	1	0	1
Anthropology	5	0	5
Art History	6	0	6
Asian Studies	1	0	1
Biology	13	1	14
Chinese	2	1	3
Chemistry	22	4	26
Classical Studies	4	0	4
Communication	9	1	10
Cultural Resource Pres.	1	0	1
Computer Science	4	0	4
Dance	2	1	3
Economics	6	1	7
Education	9	0	9
English	11	0	11
Environmental Studies	1	0	1
French	4	0	4
German	1	1	2
Global Trade and Commerce	5	0	5
Health Policy & Administration	4	0	4
History	16	1	17
Humanities	1	0	1
International Studies	40	18	58
Italian	3	0	3
Japanese	3	0	3
Journalism	22	0	22
Latin American Studies	4	0	4
Mathematics	7	0	7
Medieval Studies	1	0	1
Music	2	1	3
Neuroscience	5	1	6
Philosophy	9	2	11
Political Science	31	5	36
Psychology	22	3	25
Religion	6	0	6
Sociology	26	1	27
Spanish	24	1	25
Theatre	3	0	3
Studio Art	13	3	16
Urban Studies	1	0	1
Women's Studies	11	1	12
<b>TOTAL</b>	<b>361</b>	<b>47</b>	<b>408</b>

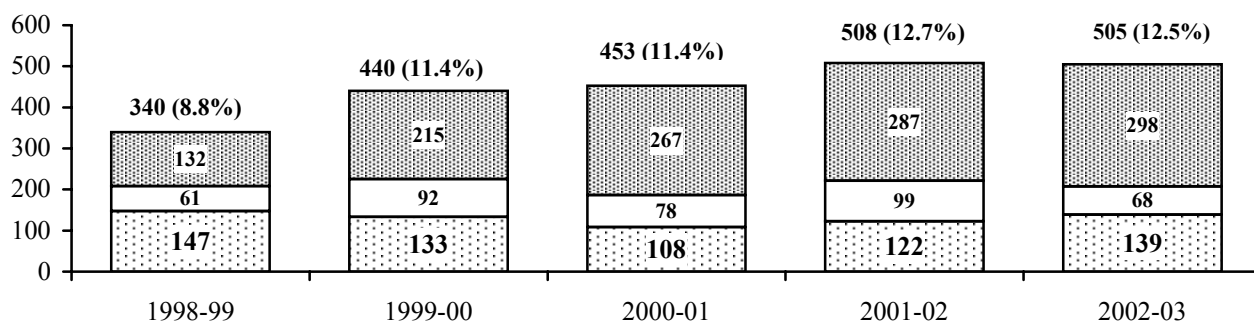


Note: For administrative purposes, a student with two minors must designate one of the two fields as the primary minor



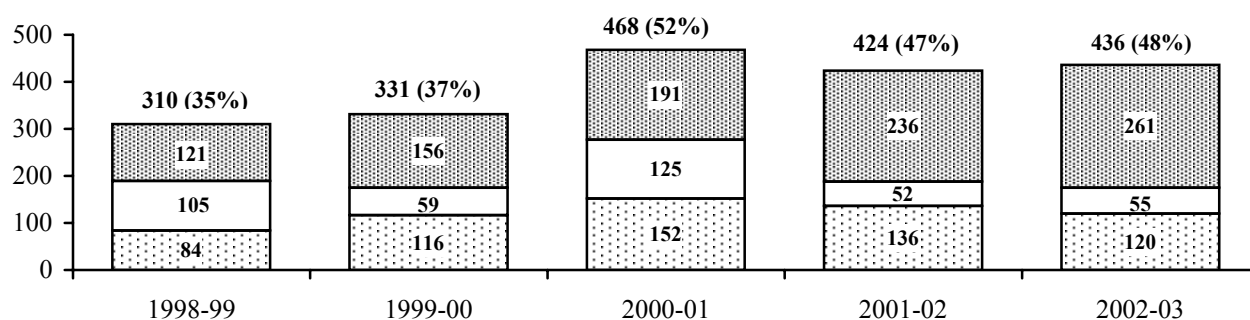
## Undergraduates Receiving Degree Credits Abroad, 1998-2003

( ) = % of total undergraduate population



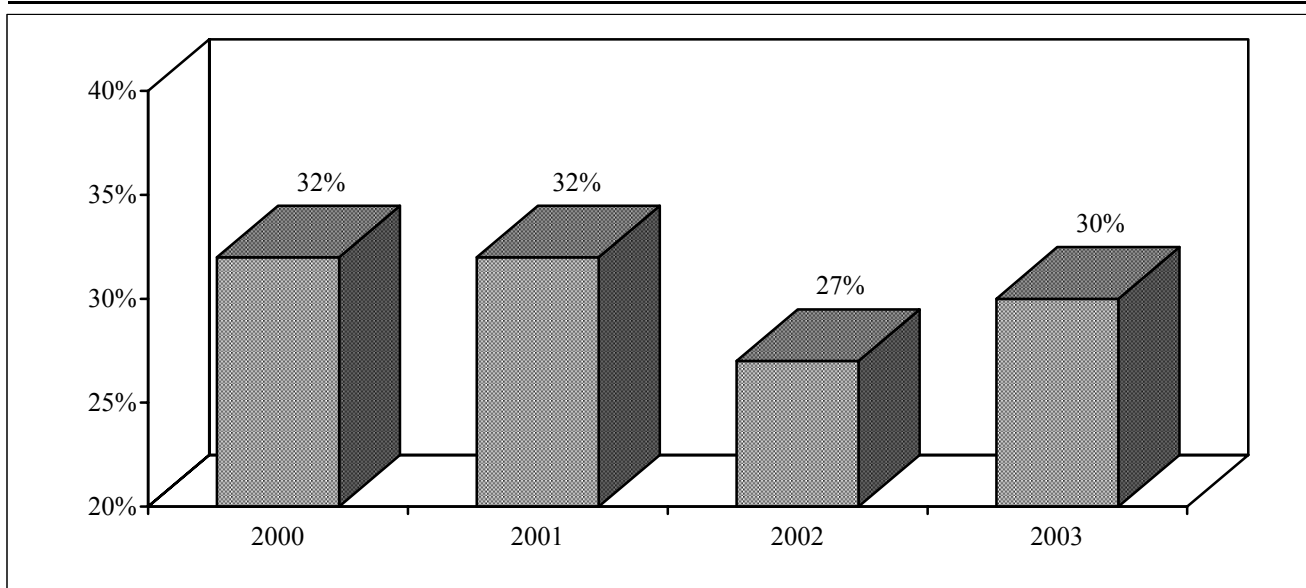
## Senior Graduates Receiving Degree Credits Abroad, 1998-2003

( ) = % of total graduates for that year



■ WFU Full-time Programs □ WFU Part-time Programs ▨ Non-WFU Programs

## Undergraduates Receiving Academic Distinction\*, 2000-2003

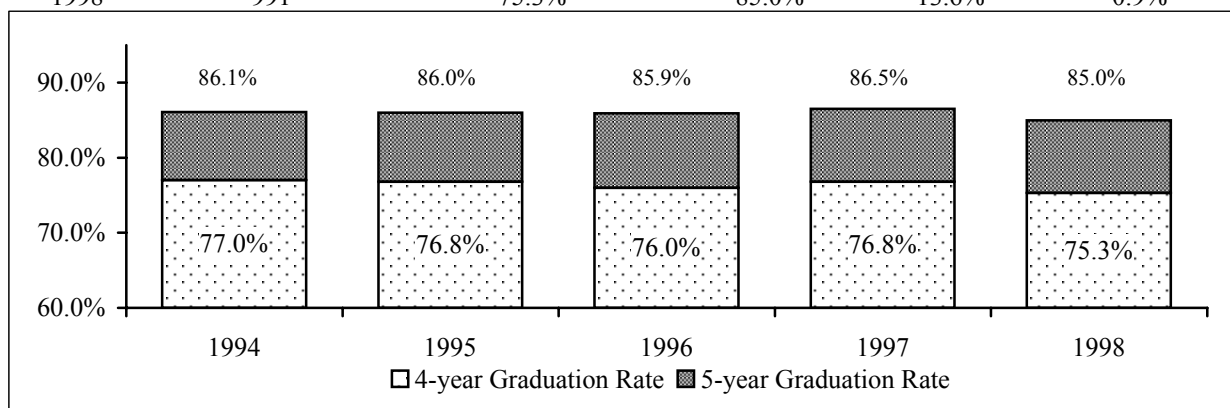


\* Minimum criteria: cum laude - 3.4, magna cum laude - 3.6, summa cum laude - 3.8

## Undergraduate Graduation and Attrition Rates

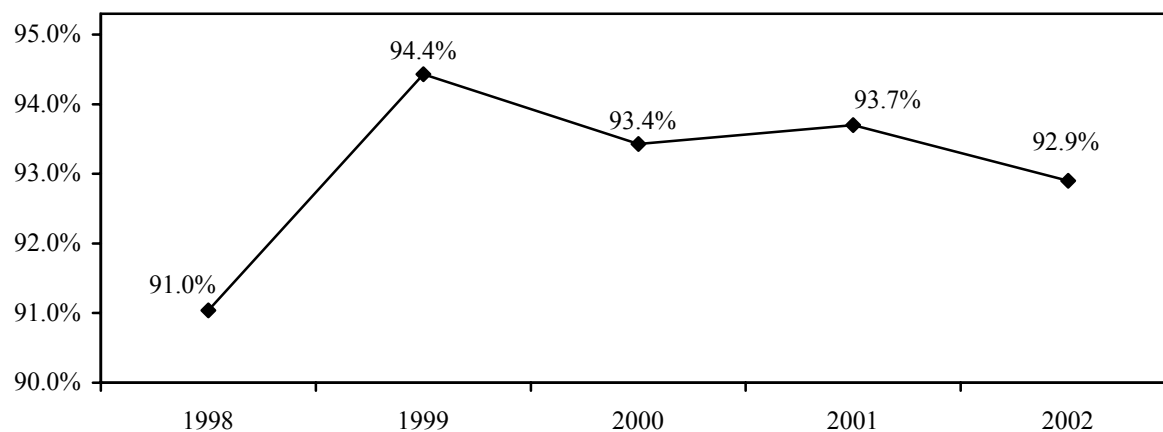
Entering First-time Freshmen, Fall 1994-1998

Year	Number Entering	Graduated (Within 4 Years)	Graduated (Within 5 Years)	Withdrew or Transferred	Academically Ineligible
1994	944	77.0%	86.1%	12.6%	1.3%
1995	962	76.8%	86.0%	11.6%	1.0%
1996	937	76.0%	85.9%	13.2%	0.9%
1997	964	76.8%	86.5%	12.7%	0.4%
1998	991	75.3%	85.0%	13.6%	0.9%



## First-time Freshmen Retention Rate, 1998-2002

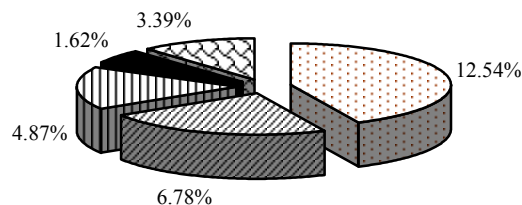
Fall	Total Enrollment	# Returned Following Fall	Retention Rate Following Fall
1998	993	904	91.0%
1999	970	916	94.4%
2000	1020	953	93.4%
2001	983	921	93.7%
2002	999	928	92.9%



## Placement of 2003 Graduating Class\*

### GRADUATE & PROF. SCHOOLS

Arts and Sciences	12.54%
Law School	6.78%
Medical School	4.87%
Deferring	1.62%
Other	3.39%
<b>Total</b>	<b>29.20%</b>

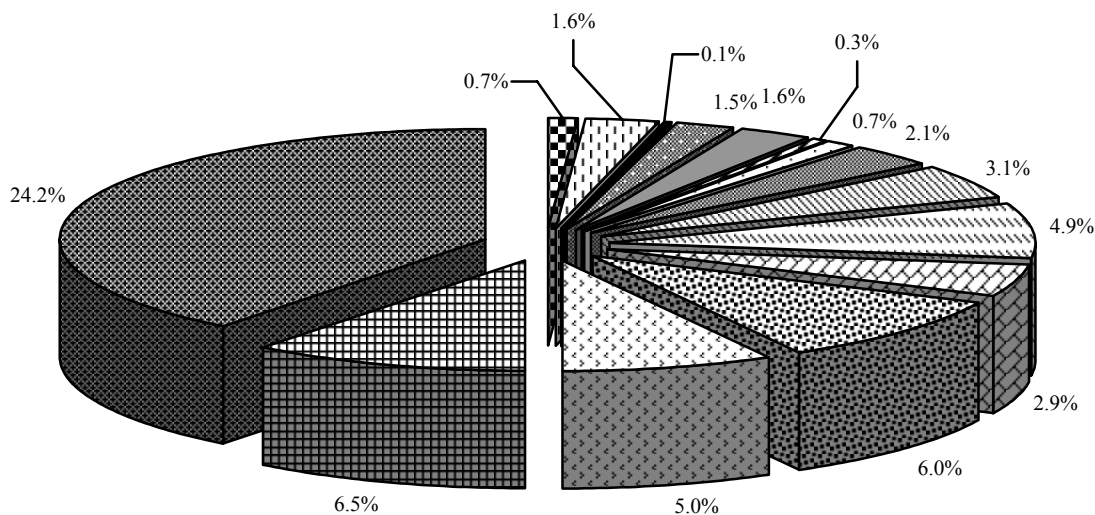


Arts and Sciences
  Law School
  Medical School
  Deferring
  Other

\*Response to Placement Survey six months after graduation (81.59%)--Office of Career Services

Accounting	4.9%	Law	1.6%
Professional Athletics**	1.5%	Management	2.9%
Consulting	1.6%	Media	0.3%
Financial Services	6.5%	Advertising	0.1%
Education/Teaching	6.0%	Research	5.0%
Government/Military	2.1%	Sales/Marketing	3.1%
Education/Administration	0.7%	Other	24.2%
Insurance	0.7%	<b>Total</b>	<b>61.4%</b>

\*\*Does not include coaching

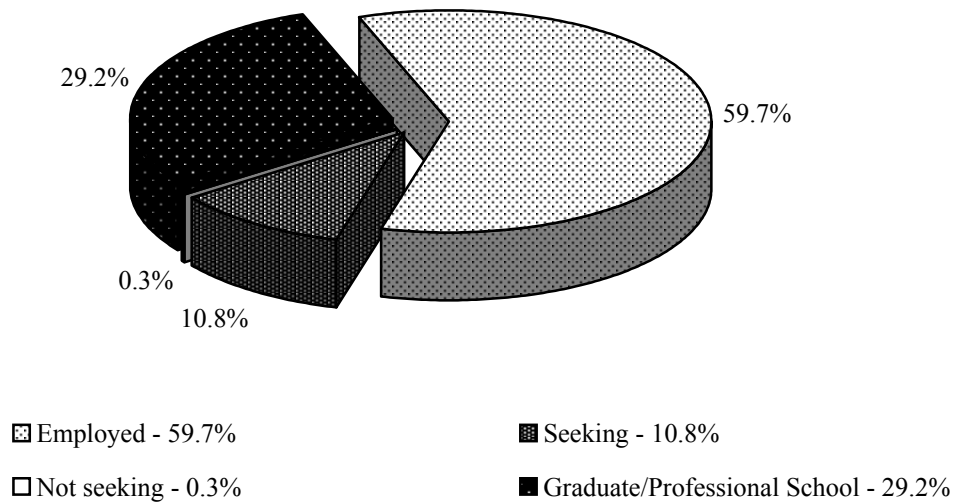


<span style="display: inline-block; width: 10px; height: 10px; border: 1px solid black; background-color: white; margin-right: 5px;"></span> Insurance	<span style="display: inline-block; width: 10px; height: 10px; border: 1px solid black; background-color: white; margin-right: 5px;"></span> Law	<span style="display: inline-block; width: 10px; height: 10px; border: 1px solid black; background-color: white; margin-right: 5px;"></span> Advertising	<span style="display: inline-block; width: 10px; height: 10px; border: 1px solid black; background-color: white; margin-right: 5px;"></span> Professional Athletics**
<span style="display: inline-block; width: 10px; height: 10px; border: 1px solid black; background-color: white; margin-right: 5px;"></span> Consulting	<span style="display: inline-block; width: 10px; height: 10px; border: 1px solid black; background-color: white; margin-right: 5px;"></span> Media	<span style="display: inline-block; width: 10px; height: 10px; border: 1px solid black; background-color: white; margin-right: 5px;"></span> Education/Administration	<span style="display: inline-block; width: 10px; height: 10px; border: 1px solid black; background-color: white; margin-right: 5px;"></span> Government/Military
<span style="display: inline-block; width: 10px; height: 10px; border: 1px solid black; background-color: white; margin-right: 5px;"></span> Sales/Marketing	<span style="display: inline-block; width: 10px; height: 10px; border: 1px solid black; background-color: white; margin-right: 5px;"></span> Accounting	<span style="display: inline-block; width: 10px; height: 10px; border: 1px solid black; background-color: white; margin-right: 5px;"></span> Management	<span style="display: inline-block; width: 10px; height: 10px; border: 1px solid black; background-color: white; margin-right: 5px;"></span> Education/Teaching
<span style="display: inline-block; width: 10px; height: 10px; border: 1px solid black; background-color: white; margin-right: 5px;"></span> Research	<span style="display: inline-block; width: 10px; height: 10px; border: 1px solid black; background-color: white; margin-right: 5px;"></span> Financial Services	<span style="display: inline-block; width: 10px; height: 10px; border: 1px solid black; background-color: white; margin-right: 5px;"></span> Other	

## Placement of 2003 Graduating Class

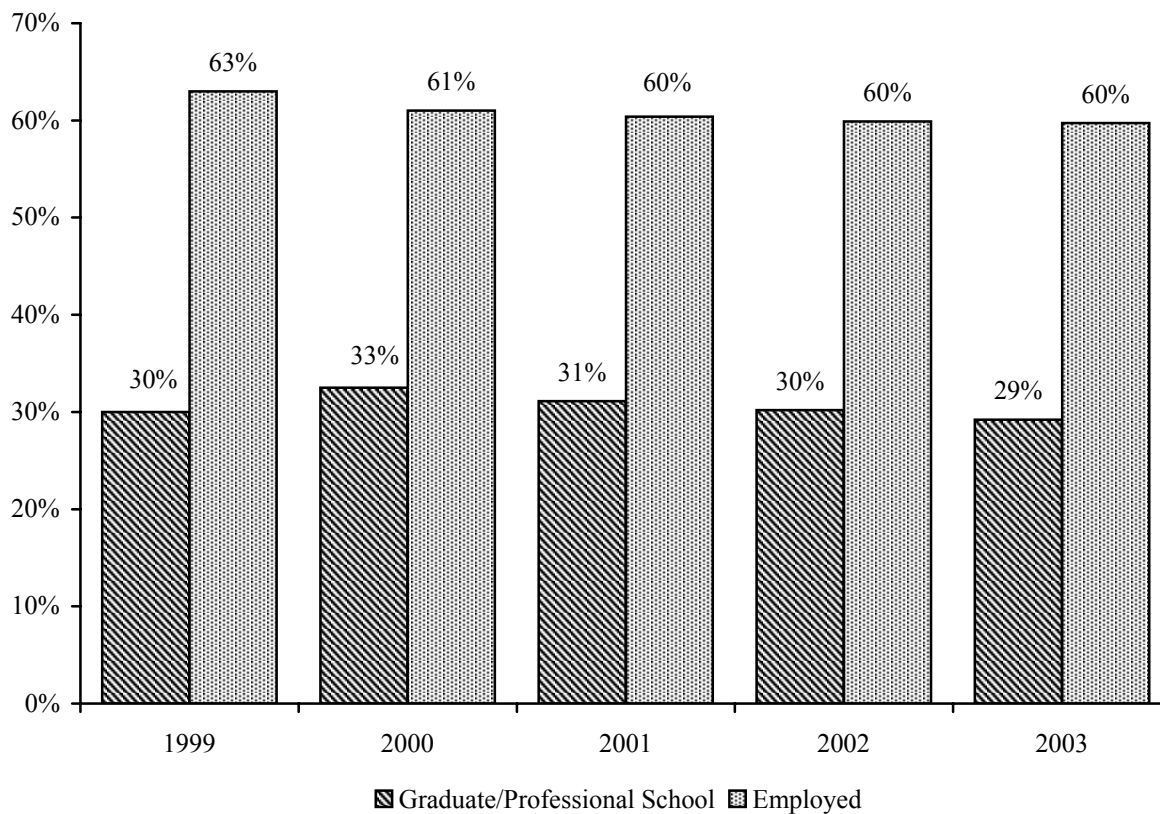
---

### OVERALL PLACEMENT OF CLASS -- 88.93%



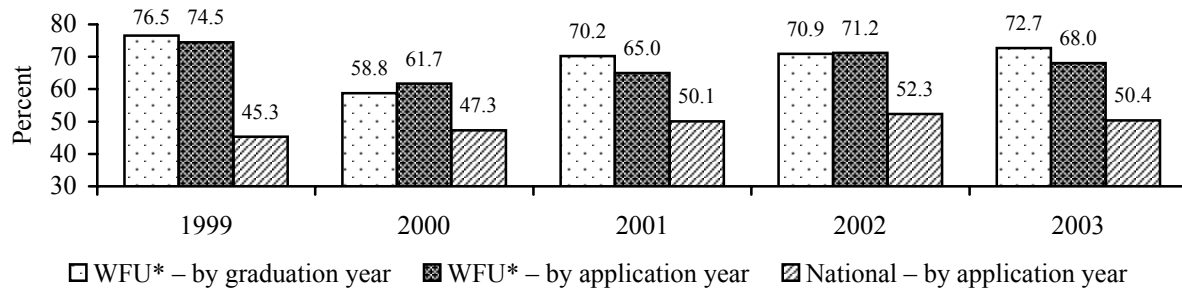
## Placement of Graduating Classes, 1999-2003

---



## Acceptance Rates to Medical School, 1999-2003

Comparison of WFU Success with National Pool Medical School Students -- Percent Accepted



\*Alumni who applied more than once were counted only once.

Note: Between 1999 and 2003, 275 students applied to allopathic medical school while 193 were accepted into 64 of the 126 allopathic institutions (70.3% success rate over the period). The four North Carolina medical schools accepted 67 students (34.7% of admitted students) as follows: Wake Forest University School of Medicine – 30; Duke University School of Medicine – 7; University of North Carolina at Chapel Hill – 16; and Brody School of Medicine of East Carolina University – 14.

## Medical School Matriculations, 1999-2003

Baylor College of Medicine	University of Alabama at Birmingham
Boston University	University of Arkansas
Brody School of Medicine of East Carolina University	University of Chicago - Pritzker
Dartmouth Medical School	University of Cincinnati
Duke University	University of Connecticut
Drexel University	University of Florida
East Tennessee State University	University of Kansas
Eastern Virginia Medical School	University of Kentucky
Emory University	University of Louisville
Florida State University	University of Maryland
Georgetown University	University of Massachusetts
George Washington University	University of Medicine & Dentistry of New Jersey
Harvard University	University of Minnesota - Minneapolis
Indiana University	University of Nebraska
Jefferson Medical College	University of North Carolina - Chapel Hill
Johns Hopkins University	University of Pennsylvania
Loyola University	University of Pittsburgh
Marshall University	University of Rochester
Medical College of Georgia	University of South Alabama
Medical University of South Carolina	University of South Florida
Mercer University	University of Southern California
Mount Sinai School of Medicine	University of Tennessee
Morehouse School of Medicine	University of Texas - San Antonio
New York Medical College	University of Texas - Galveston
Northwestern University	University of Texas Southwestern
Ohio State University	University of Vermont
Penn State University	University of Virginia
Ponce School of Medicine	Vanderbilt University
Saint Louis University	Virginia Commonwealth University
SUNY Buffalo	Wake Forest University
Temple University	West Virginia University
Uniformed Services University	Yale University

## Applicants to Accredited Law Schools, 2002-2003

	WFU		National	
	Seniors	All	Seniors	All
Number of Applicants	87	234	32,021	99,504
Average LSAT				
Score	157.5	157.3	152.6	152.2
Percentile*	73rd	73rd	56th	54th
Undergraduate GPA	3.16	3.1	3.31	3.19
Admitted to ABA Law School(s)				
Number	67	177	20,904	56,825
Percent	77%	76%	65%	57%
Enrolled at a Law School				
Number	58	146	17,784	46,176
Percent	67%	62%	56%	46%
Admissions per Applicant	2.17	1.86	1.68	1.33

\*Estimated

## Law Schools Admitting Wake Forest Applicants, 2002-2003

**An asterisk (\*) indicates that a student from Wake Forest enrolled at the school.**

American University*	New York University School of Law	University of Denver College of Law*
Appalachian School of Law	North Carolina Central University*	University of Detroit - Mercy
Ave Maria School of Law	Northern Kentucky University Chase	University of District of Columbia
Benjamin Cardozo School of Law*	Northwestern University	University of Georgia*
Boston College Law School	Nova Southeastern University	University of Idaho
Boston University	Ohio Northern University	University of Illinois
Brooklyn Law School*	Ohio State University*	University of Kansas*
Campbell University School of Law*	Pepperdine University	University of Kentucky*
Capital University Law School*	Regent University School of Law	University of Louisville - Brandeis
Case Western Reserve University*	Roger Williams University School of Law	University of Maryland
Catholic University of America	Saint John's University School of Law	University of Miami
Chicago-Kent College of Law	Saint Louis University	University of Michigan*
Columbia University*	Saint Mary's University*	University of Missouri - Kansas City
Cornell University	Samford University - Cumberland Law*	University of North Carolina*
Creighton University	Seton Hall University	University of Notre Dame*
CUNY School of Law at Queens	South Texas College of Law*	University of Pittsburgh*
Drake University Law School	Southern Illinois University	University of Richmond*
Duke University*	Southern Methodist University*	University of San Diego*
Emory University*	Stanford University Law School	University of San Francisco
Florida Coastal School of Law*	Stetson University	University of South Carolina*
Florida State University*	Suffolk University Law School*	University of South Dakota
Fordham University	Syracuse University College of Law	University of Tennessee
Franklin Pierce Law Center*	Temple University*	University of Texas School of Law*
George Washington University*	Texas Southern University	University of Toledo
Georgetown University	Texas Tech University*	University of Virginia*
Georgia State University*	Texas Wesleyan University	Valparaiso University
Harvard Law School	Thomas M. Cooley Law School	Vanderbilt University Law School*
Howard University	Tulane University*	Vermont Law School
Indiana University - Bloomington	University at Buffalo	Villanova University
John Marshall Law School - Chicago*	University of Akron	Wake Forest University School of Law*
Lewis and Clark - Northwestern	University of Alabama*	Washburn University
Louisiana State University*	University of Arkansas - Fayetteville	Washington and Lee University
Loyola University - New Orleans	University of Arkansas - Little Rock	Washington University - Missouri*
McGeorge School of Law	University of Baltimore*	Wayne State University
Mercer University*	University of Chicago	West Virginia University*
Michigan State University - Detroit College	University of Cincinnati*	Widener University School of Law
Mississippi College School of Law	University of Colorado*	Willamette University
New England School of Law*	University of Connecticut	William and Mary Law School*
New York Law School	University of Dayton	

## Teaching Faculty\* - Wake Forest University, Fall 2003

	Full-time Teaching		Teaching Admin.		Part-time Teaching		Total		FTE
	Male	Female	Male	Female	Male	Female	Male	Female	
Arts and Sciences**	362		11		88		461		394
	232	130	7	4	40	48	279	182	
Divinity School	6		3		14		23		15
	5	1	1	2	10	4	16	7	
Law School	38		5		16		59		45***
	23	15	2	3	14	2	39	20	
Babcock MBA	37		5		7		49		41***
	33	4	5	0	6	1	44	5	
Reynolda Campus Total	443		24		125		592		495
	293	150	15	9	70	55	378	214	
Medical School	706		16		542		1,264		762
	542	164	10	6	431	111	983	281	
University Total	1,149		40		667		1,856		1,257
	835	314	25	15	501	166	1361	495	

\* All faculty (including visiting) actually teaching fall 2003

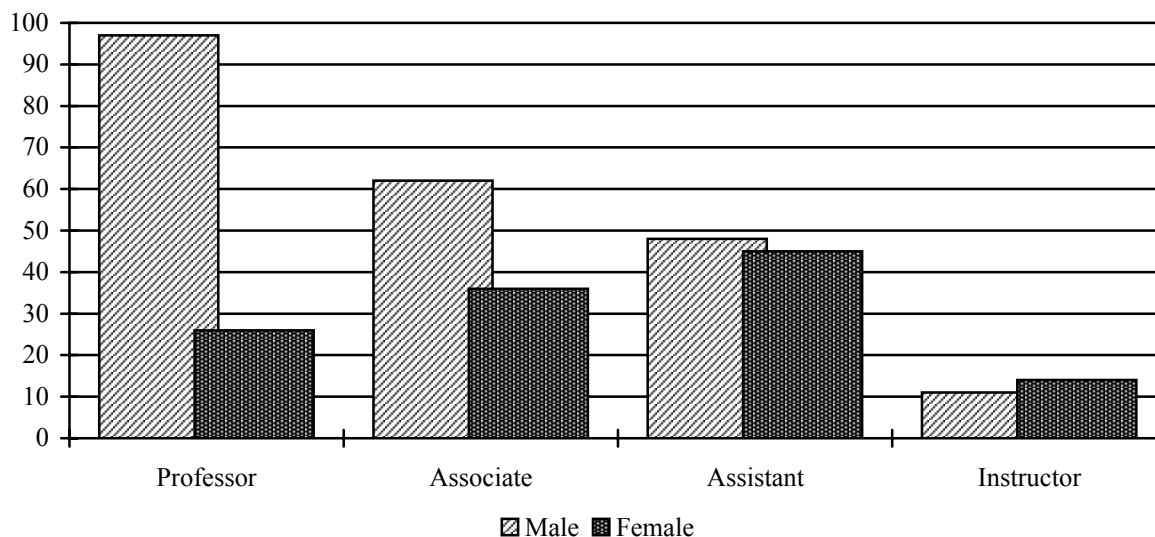
\*\* Includes the Calloway School of Business and Accountancy

\*\*\* Estimated by adding full-time faculty to one third of both teaching admin. and part-time faculty

## Full-time Faculty\*\* by Rank and Gender, Fall 2003

	Male		Female		Total by Rank	
	Number	%	Number	%	Number	%
Professor	97	43%	26	20%	123	35%
Associate	62	27%	36	28%	98	28%
Assistant	48	21%	45	35%	93	26%
Instructor	11	5%	14	11%	25	7%
Lecturer/Other	10	4%	7	5%	17	5%
Total	228	100%	128	100%	356	100%

\*\* Arts and Sciences and the Calloway School of Business and Accountancy



## Full-time Faculty by Ethnicity - Wake Forest University, Fall 2003

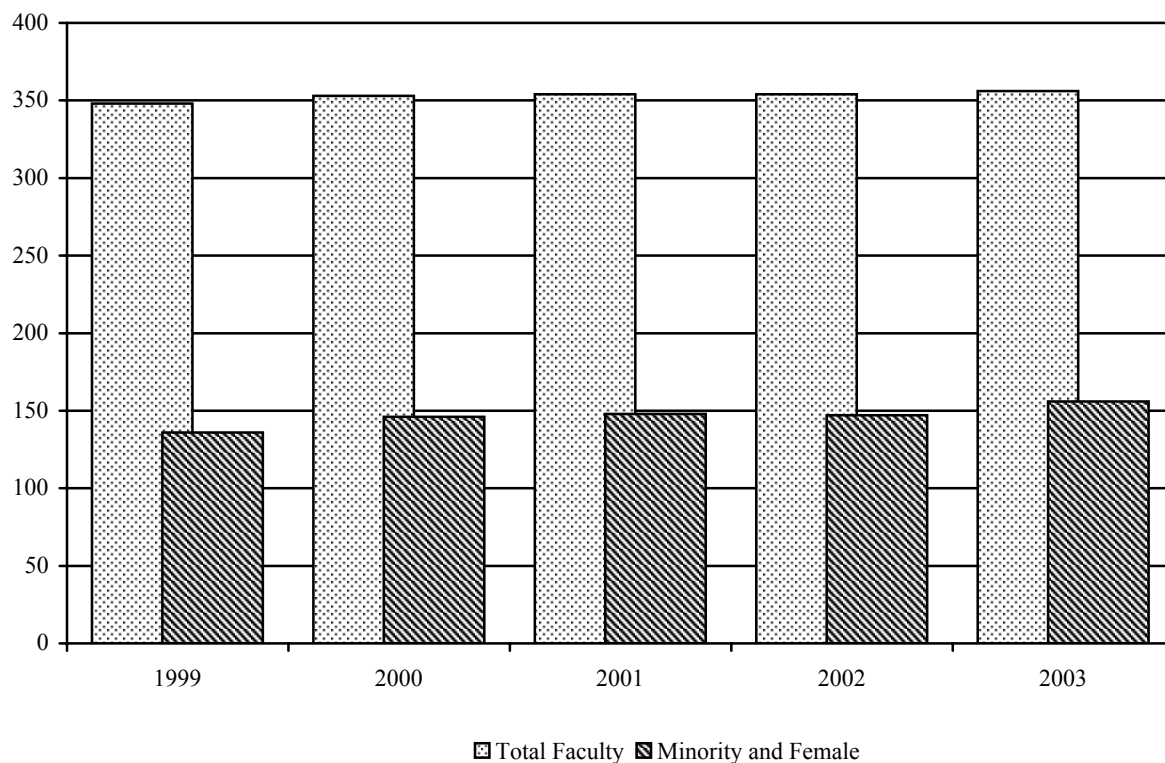
	Black		Amer. Indian		Asian		Hispanic		White		Other/ Unknown		Total
	#	%	#	%	#	%	#	%	#	%	#	%	
Arts and Sciences*	17	4.8%	0	0.0%	17	4.8%	13	3.7%	309	86.8%	0	0.0%	356
Divinity School**	1	11.1%	0	0.0%	0	0.0%	0	0.0%	8	88.9%	0	0.0%	9
Law School**	4	10.5%	0	0.0%	0	0.0%	0	0.0%	34	89.5%	0	0.0%	38
Babcock MBA**	2	4.8%	0	0.0%	3	7.1%	0	0.0%	37	88.1%	0	0.0%	42
Medical School**	16	2.0%	3	0.4%	63	7.7%	19	2.3%	716	87.3%	3	0.4%	820
<b>Total</b>	<b>40</b>	<b>3.2%</b>	<b>3</b>	<b>0.2%</b>	<b>83</b>	<b>6.6%</b>	<b>32</b>	<b>2.5%</b>	<b>1,104</b>	<b>87.3%</b>	<b>3</b>	<b>3.1%</b>	<b>1,265</b>

\* Includes the Calloway School of Business and Accountancy

\*\* Includes administrative faculty

## Percentage of Full-time Minority and Female Faculty, Arts and Sciences\*, Fall 1999-2003

Fall	Total Faculty	Number of Minority	% Minority	Number of Female	% Female	Total Percentage of Minority and Female
1999	348	42	12.1%	122 (18 minority)	35%	42%
2000	353	43	12.2%	124 (19 minority)	35%	42%
2001	354	41	11.6%	125 (19 minority)	35%	42%
2002	354	44	12.4%	128 (19 minority)	36%	43%
2003	356	47	13.2%	128 (17 minority)	36%	44%



\* Includes the Calloway School of Business and Accountancy

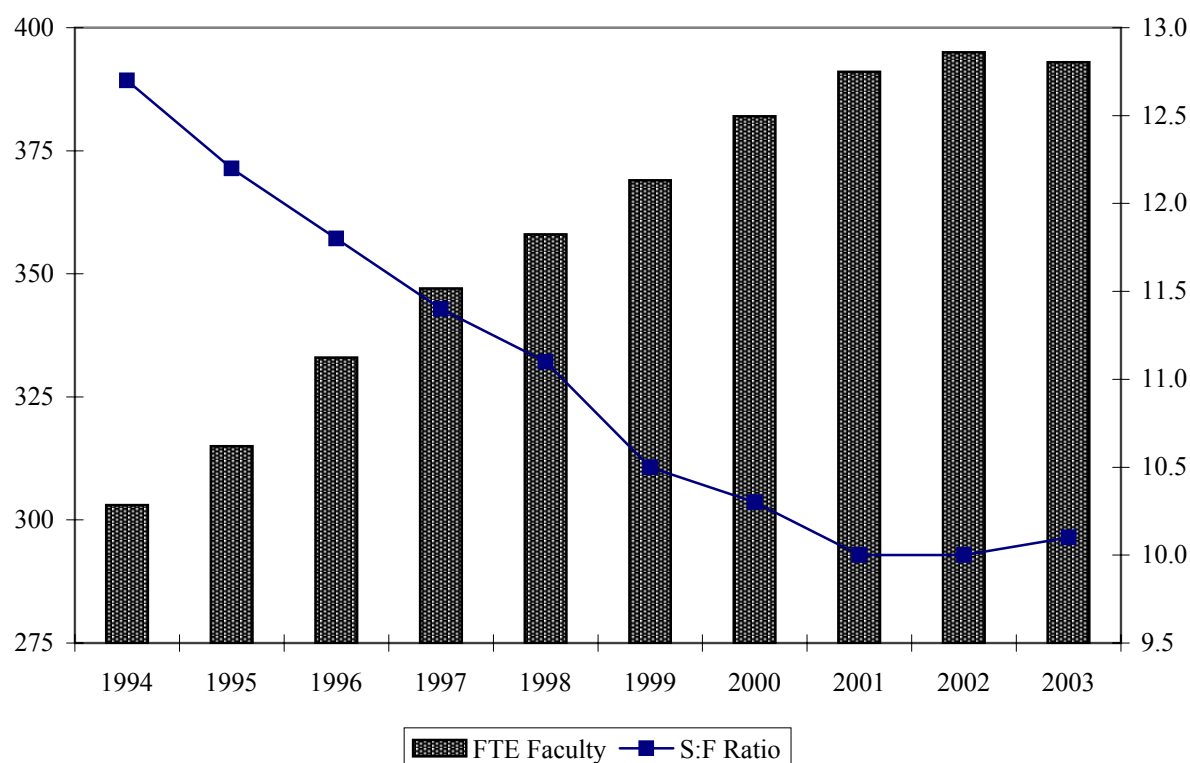


## Teaching Equivalents and Student-to-Faculty Ratio\*, Fall 1994-2003

	1994	1995	1996	1997	1998	1999	2000	2001	2002	2003
Full-time Teaching Faculty	282	292	308	315	324	333	355	357	362	362
FTE	282	292	308	315	324	333	355	357	362	362
Part-time Teaching Faculty	36	35	39	58	44	79**	74**	84**	75**	88**
FTE	17.25	17.42	19.22	26.15	30.25	31.76	23.29	28.19	26.2	28.3
Teaching Administrator	9	11	13	13	11	12	11	14	16	11
FTE	4	5.41	5.81	6.25	3.75	4.24	4.21	5.42	6.9	3.3
Total Teaching Faculty/FTE	327/303	338/315	360/333	386/347	379/358	424/369	440/382	455/391	453/395	461/393
Student-to-Faculty Ratio	12.7:1	12.2:1	11.8:1	11.4:1	11.1:1	10.5:1	10.3:1	10.0:1	10.0:1	10.1:1

\*Arts and Sciences and the Calloway School of Business and Accountancy

\*\* Includes part-time faculty and part-time instructors, fee basis only



## Percentage of Part-time Faculty\*, Fall 1999-2003

	1999	2000	2001	2002	2003
Total Number of Full-time Faculty and Teaching Admin.	345	366	371	378	373
Total Number of Part-time Faculty**	79	74	84	75	88
Percentage of Part-time Faculty	19%	17%	18%	17%	19%
Percentage of Part-time FTE Faculty	8.6%	6.1%	7.2%	6.6%	7.2%

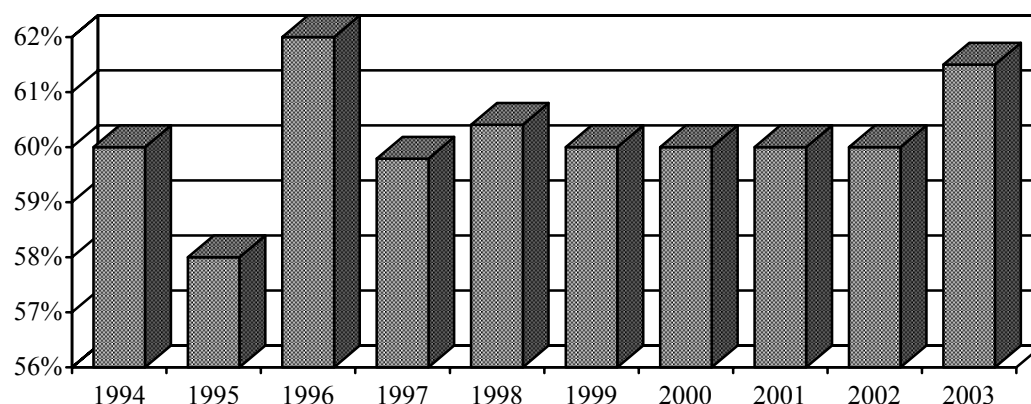
\*Arts and Sciences and the Calloway School of Business and Accountancy

\*\* Includes part-time faculty and part-time instructors, fee basis only

### Tenure of Full-time Instructional Faculty - Reynolda Campus, Fall 2003

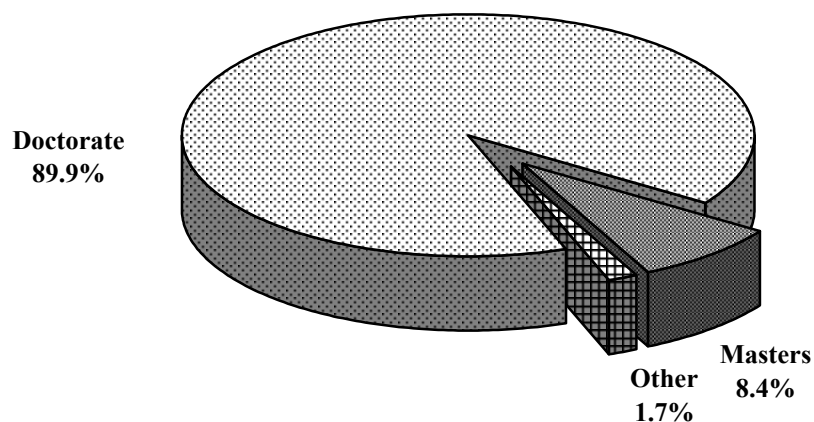
Rank	Tenured		Tenure Track		Non-Tenure Track		Total		% Tenured	
	Male	Female	Male	Female	Male	Female	Male	Female	Male	Female
Professor	123	34	0	0	5	1	128	35	96%	97%
Associate	72	37	5	0	1	0	78	37	92%	100%
Assistant	0	0	43	36	13	13	56	49	0%	0%
Instructor	0	0	1	1	10	13	11	14	0%	0%
Lecturer	1	0	0	0	7	7	8	7	13%	0%
Other rank	0	0	0	0	4	7	4	7	0%	0%
Total	196	71	49	37	40	41	285	149	69%	48%

### Percentage of Full-time Instructional Faculty Tenured - Reynolda Campus, Fall 1994-2003



### Highest Degree Earned for Full-Time Instructional Faculty\*, Fall 2003

Degree	Male		Female		Total Faculty		
	#	%	#	%	#	%	
Doctorate	212	93.0%	108	84.4%	320	89.9%	*Arts and Sciences and the Calloway School of Business and Accountancy
Masters	13	5.7%	17	13.3%	30	8.4%	
Other	3	1.3%	3	2.3%	6	1.7%	
Total	228		128		356	100%	



### Tenure of Full-time Instructional Faculty\* - School of Medicine, Fall 2003

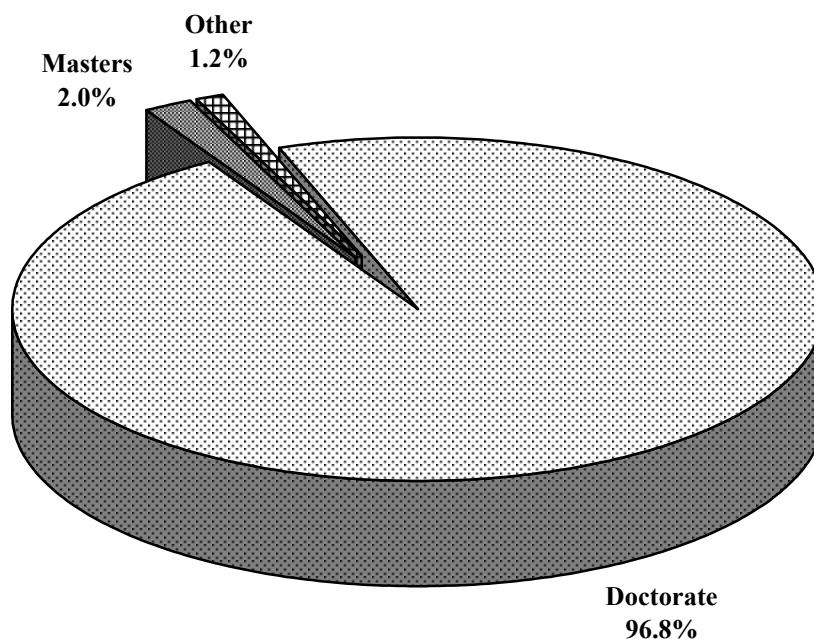
Rank	Tenured		Tenure Track		Non-Tenure Track		Total		% Tenured	
	Male	Female	Male	Female	Male	Female	Male	Female	Male	Female
Professor	122	14	68	12	2	1	192	27	64%	52%
Associate	14	1	145	44	8	6	167	51	8%	2%
Assistant	0	0	182	76	37	23	219	99	0%	0%
Instructor	0	0	18	13	9	25	27	38	0%	0%
Other rank	0	0	0	0	0	0	0	0	0%	0%
Total	136	15	413	145	56	55	605	215	22%	7%

\* Source: Office of the Dean

### Highest Degree Earned for Full-Time Instructional Faculty\* - School of Medicine, Fall 2003

Degree	Male		Female		Total Faculty	
	#	%	#	%	#	%
Doctorate	594	98.2%	200	93.0%	794	96.8%
Masters	7	1.2%	9	4.2%	16	2.0%
Other	4	0.7%	6	2.8%	10	1.2%
Total	605		215		820	100%

\* Source: Office of the Dean

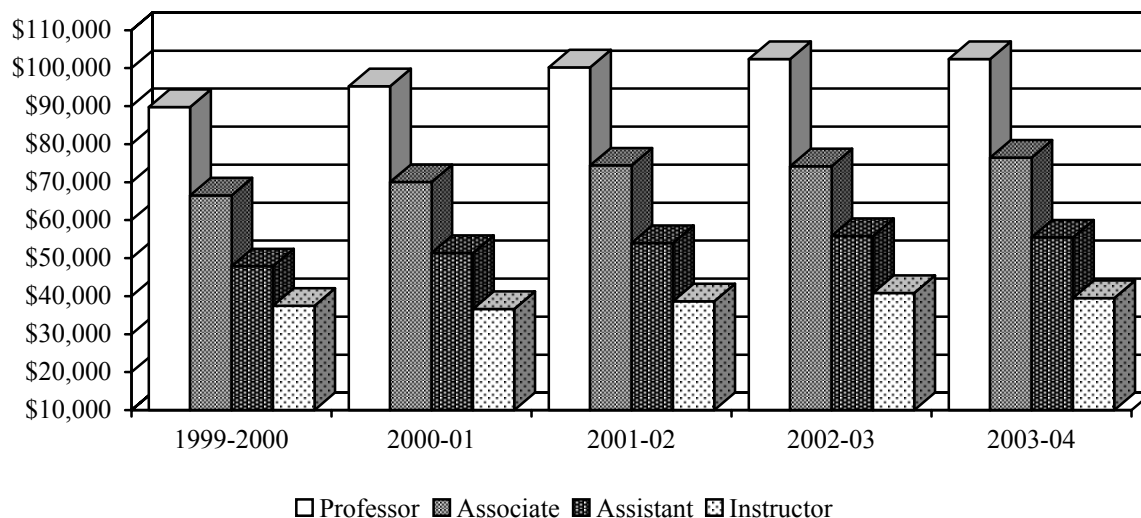


### \*Average Full-time Faculty Salary by Rank - Reynolda Campus

Rank	1999-2000	2000-01	2001-02	2002-03	2003-04
Professor	\$89,749	\$95,270	\$100,195	\$102,408	\$102,383
Associate	\$66,550	\$70,011	\$74,400	\$74,187	\$76,439
Assistant	\$47,887	\$51,355	\$53,958	\$55,824	\$55,441
Instructor	\$37,483	\$36,653	\$38,640	\$40,816	\$39,509
<b>**All Ranks</b>	<b>\$67,944</b>	<b>\$72,256</b>	<b>\$75,590</b>	<b>\$76,684</b>	<b>\$77,494</b>

\* Sources: *ACADEME* and Office of Human Resources

\*\* Average salary of all ranks, *including lecturers*



### Average Full-time Faculty Salaries - College and Calloway, 2003-2004

Division	Professor	Associate	Assistant	Instructor
Humanities and Fine Arts	\$87,878	\$65,618	\$44,971	\$37,855
Social Sciences and SBA*	\$93,643	\$75,642	\$54,496	**
Natural Sciences and Mathematics	\$94,057	\$73,095	\$55,039	\$43,783
All Divisions	\$91,994	\$71,542	\$50,618	\$39,509

\*\*Average salary not published since number of faculty is fewer than six.

#### NOTE:

##### Humanities and Fine Arts include:

Art  
Classical Languages  
East Asian Languages and Cultures  
English  
German and Russian  
Humanities  
Music  
Philosophy  
Religion  
Romance Languages  
Theatre and Dance  
Certain Interdepartmental  
and Chaired Professors  
Women's Studies

##### Social Sciences and SBA\* include:

Anthropology  
Communication  
Counseling  
Economics  
Education  
History  
Political Science  
Psychology  
Sociology  
\*Calloway School of Business and Accountancy

##### Natural Sciences and Mathematics include:

Biology  
Chemistry  
Computer Science  
Health and Exercise Science  
Mathematics  
Physics

### Full-time Staff by Category, Gender, and Ethnicity - Reynolda Campus, 2003

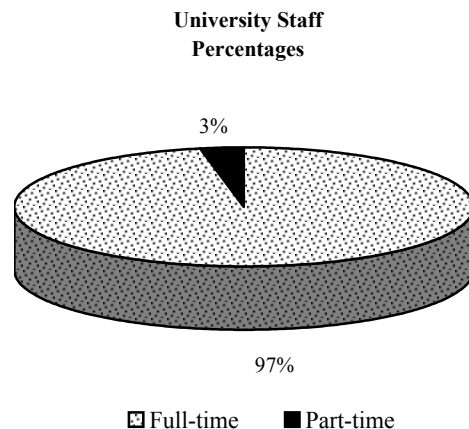
Category	White		Black		Hispanic		Asian		Native American		Unknown		Total
	M	F	M	F	M	F	M	F	M	F	M	F	
Executive / Administrative	44	27	3	2	0	0	1	0	0	0	1	0	78
Professional / Non-Faculty	228	230	14	20	4	0	3	4	1	0	7	4	515
Secretarial / Clerical	17	238	4	24	0	2	0	3	0	1	0	0	289
Technical / Paraprofessional	34	17	3	5	0	0	0	1	0	0	0	0	60
Skilled Craft	53	1	4	0	1	0	0	0	1	0	0	0	60
Service Maintenance	86	28	50	45	10	14	1	0	0	0	0	0	234
Total	462	541	78	96	15	16	5	8	2	1	8	4	1,236

### Full-time Staff by Category, Gender, and Ethnicity - Bowman Gray Campus, 2003

Category	White		Black		Hispanic		Asian		Native American		Unknown		Total
	M	F	M	F	M	F	M	F	M	F	M	F	
Executive / Administrative	83	226	2	17	0	1	1	2	0	0	2	0	334
Professional / Non-Faculty	94	446	9	19	6	6	37	29	0	1	1	0	648
Secretarial / Clerical	38	923	8	114	1	5	1	11	0	6	0	0	1,107
Technical / Paraprofessional	142	291	14	36	4	5	16	31	1	3	0	0	543
Skilled Craft	26	5	3	1	1	0	0	0	0	0	0	0	36
Sales	7	8	0	0	0	0	0	0	0	0	0	0	15
Service Maintenance	29	66	16	32	2	0	0	0	0	1	0	0	146
Total	419	1,965	52	219	14	17	55	73	1	11	3	0	2,829

### Full-time vs. Part-time Staff

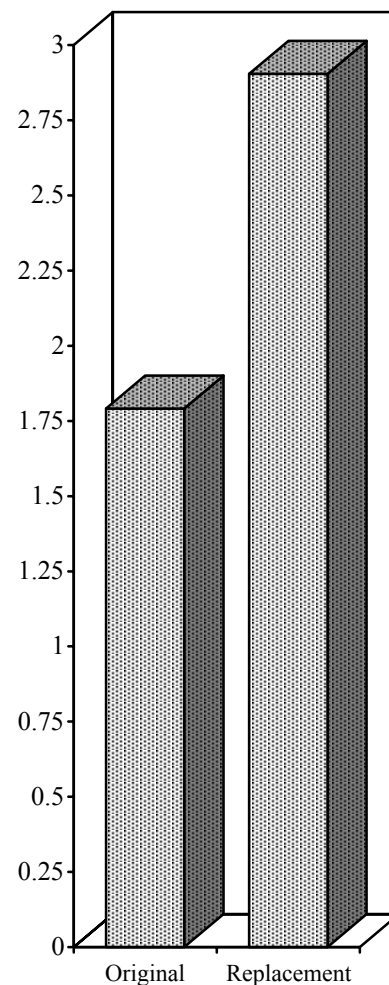
	Full-time	Part-time	Total
Reynolda Campus	1,236	28	1,264
Bowman Gray Campus	2,829	106	2,935
Total	4,065	134	4,199



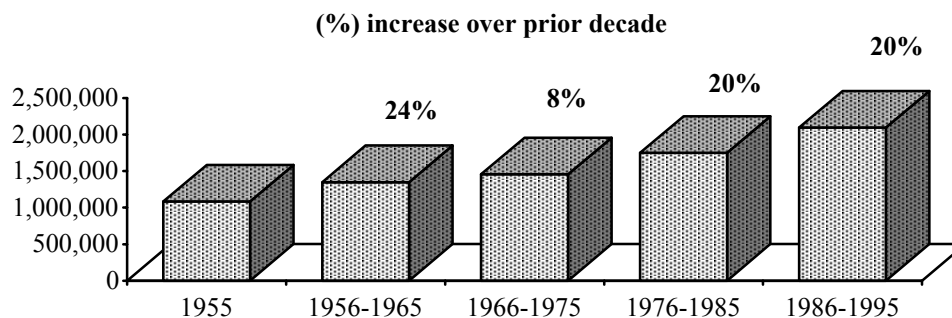
## Main Facilities Reynolda Campus - Building Profiles

		Date	Gross Sq. ft.	Assignable Sq. ft.
<b>Academic</b>	Calloway Center (w/ Kirby Wing)	1969	88,674	54,394
	Carswell Hall	1955	58,815	38,971
	Greene Hall	1999	80,000	46,872
	Museum of Anthropology	1987	7,048	5,107
	Olin Physical Laboratory	1989	31,837	20,751
	Reynolds Gymnasium	1955	151,569	103,717
	Salem Hall	1955	55,083	33,915
	Scales Fine Art Center	1976	143,346	76,635
	Tribble Hall	1963	80,168	47,937
	Wingate Hall & Wait Chapel	1955	81,879	39,066
	Winston Hall	1961	100,460	51,852
	Worrell Professional Center	1993	178,000	115,700
	Z. Smith Reynolds Library	1955	187,659	133,186
<b>Support</b>	Starling Hall/Welcome Center	1956	9,239	3,686
	Manchester Athletic Center	1978	65,393	36,178
	Benson Center	1990	100,422	57,849
	Central Heating Plant	1955	15,466	6,578
	Information Systems	1998	71,000	60,393
	Landscaping Building	1982	5,709	5,224
	Maintenance Garage Shop	1956	10,153	6,656
	Miller Center	2001	64,845	38,101
	H.S. Moore Bldg.-Facilities Mgmt.	1956	24,162	21,818
	President's House	1929	14,399	10,800
	Bookstore Warehouse/Photographer	1984	6,000	5,228
	Reynolda Hall	1955	135,799	99,602
	WFDD Radio	1920	3,769	1,681
<b>Residential (on Campus)</b>	Babcock	1961	53,027	36,231
	Bostwick	1955	43,568	32,751
	Collins	1985	49,601	31,720
	Davis	1955	69,959	43,387
	Efird	1955	15,476	10,611
	Huffman	1955	15,476	10,180
	Johnson	1955	43,392	32,305
	Kitchin	1955	66,373	43,727
	Luter	1971	68,175	43,255
	Martin	1994	28,754	22,960
	Palmer	1982	12,942	10,860
	Piccolo	1982	12,942	10,860
	Polo	1998	78,562	59,600
	Poteat	1955	52,271	37,082
	Student Apartments	1956	28,012	21,196
	Taylor	1955	68,680	45,831
	Townhouses	1976	7,897	6,717

**Total Cost of Buildings  
Listed  
(x \$100,000,000)**



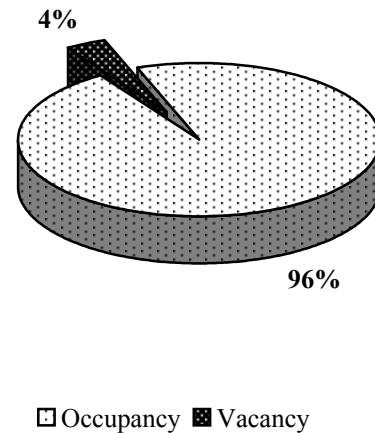
## Gross Square Feet of Reynolda Campus Facilities by Decade



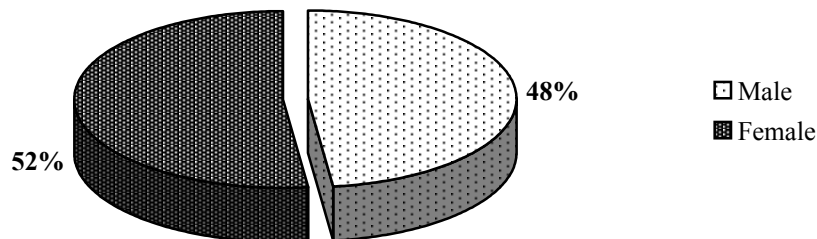
## Student Housing Utilization, Fall 2003

Student Housing	Capacity	Occupancy
Babcock (Coed)	247	244
Bostwick (Coed)	198	196
Collins (Coed)	231	230
Davis (Coed)	298	289
Efird (Coed)	95	94
Huffman Theme (Coed)	78	77
Johnson Substance Free (Coed)	198	196
Kitchin (Coed)	277	267
Luter (Coed)	289	259
North (Coed)	95	93
Palmer (Coed)	56	53
Piccolo (Coed)	62	62
Polo (Coed)	194	191
Poteat (Coed)	240	225
Rosedale, Theme Wesley (Coed)	14	14
Student Apartments (Coed)	110	108
Taylor (Coed)	248	240
Theme House - Anthony Aston (Coed)	13	9
Theme House - Give (Female)	4	4
Theme House - Nia (Female)	10	6
Theme House - World Scope (Male)	9	6
Townhouses (Female)	31	31
1115 Polo Rd - Independent (Male)	12	9
1109 Polo Rd - Independent (Male)	7	7
<b>Total</b>	<b>3,016</b>	<b>2,910</b>

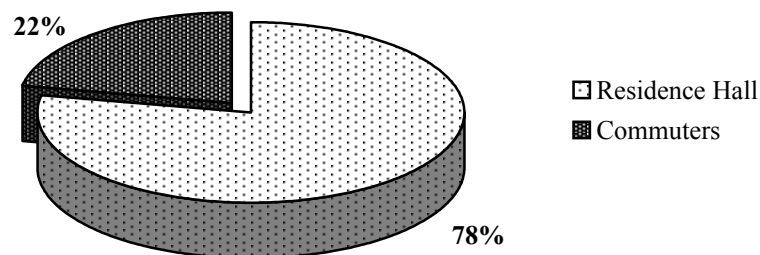
**On-Campus Occupancy Rate, Fall 2003**



**On-Campus Housing Utilization by Gender, Fall 2003**



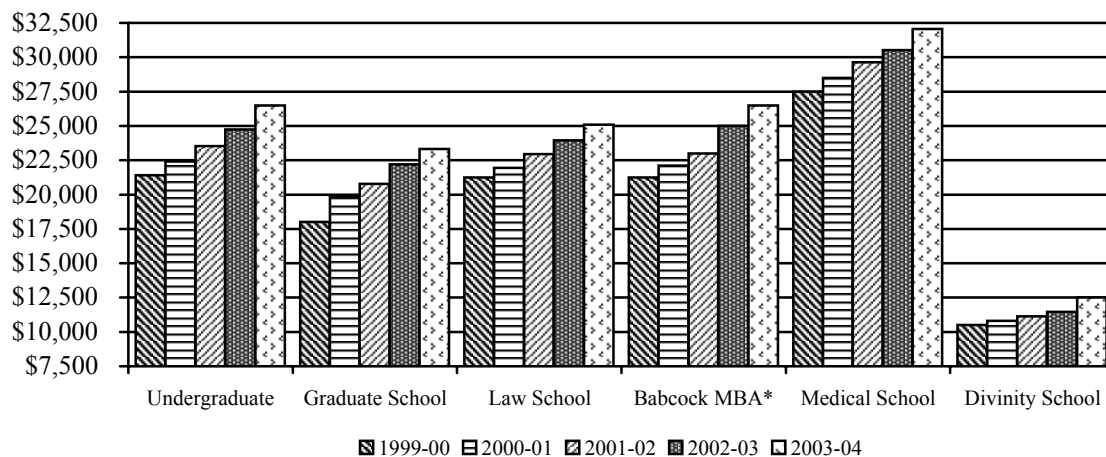
**Distribution of Fall 2003 Undergraduate Enrollment by Type of Housing**



## First-year Student Tuition

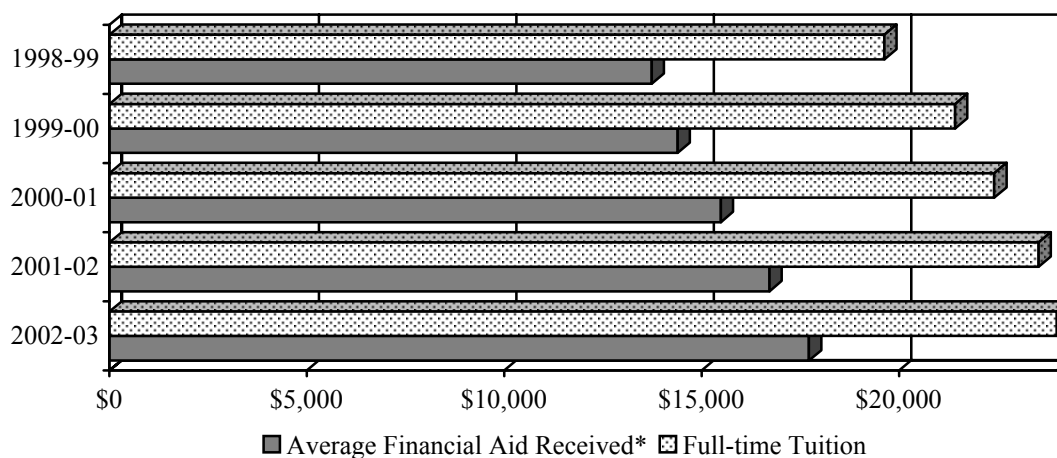
School	1999-00	2000-01	2001-02	2002-03	2003-04
Undergraduate	\$21,420	\$22,410	\$23,530	\$24,750	\$26,490
Graduate School	\$18,000	\$19,800	\$20,790	\$22,200	\$23,310
Law School	\$21,250	\$21,950	\$22,950	\$23,950	\$25,100
Babcock MBA*	\$21,250	\$22,100	\$23,000	\$25,000	\$26,500
Medical School	\$27,500	\$28,500	\$29,640	\$30,529	\$32,056
Divinity School	\$10,500	\$10,800	\$11,130	\$11,450	\$12,500

\* Resident first-year



## Undergraduate Tuition and Financial Aid

Year	Average Financial Aid Received*	Full-time Tuition	Percentage
1998-99	\$13,737	\$19,625**	70.0%
1999-00	\$14,393	\$21,420	67.2%
2000-01	\$15,484	\$22,410	69.1%
2001-02	\$16,719	\$23,530	71.1%
2002-03	\$17,717	\$24,750	71.6%



\* Average amount of aid received from all sources (excluding parent loans) through the Office of Financial Aid.

\*\* Weighted average of two tuitions (98-99: \$20,450 for freshmen/sophomores/juniors and \$17,150 for seniors)



## Annual Costs\* for "Most Competitive" Private Institutions, 2003-2004

### **Barron's Profile of American Colleges\*\***

Private Institution **	Room/Board	Tuition/Fees	Comprehensive Fees
New York University, NY	\$10,910	\$28,496	\$39,406
University of Chicago, IL	\$9,315	\$29,238	\$38,553
Georgetown University, DC	\$10,056	\$28,384	\$38,440
Massachusetts Institute of Technology, MA	\$8,710	\$29,600	\$38,310
Washington University in St. Louis, MO	\$9,240	\$29,053	\$38,293
Cornell University, NY	\$9,529	\$28,754	\$38,283
Tufts University, MA	\$8,640	\$29,630	\$38,270
Wesleyan University, CT	\$8,226	\$29,998	\$38,224
Brandeis University, MA	\$8,323	\$29,875	\$38,198
Boston University, MA	\$9,288	\$28,906	\$38,194
Middlebury College, VT	n/a	n/a	\$38,100
Harvey Mudd College, CA	\$9,420	\$28,660	\$38,080
University of Pennsylvania, PA	\$8,642	\$29,318	\$37,960
Brown University, RI	\$8,096	\$29,846	\$37,942
Harvard University, MA	\$8,868	\$29,060	\$37,928
Haverford College, PA	\$9,020	\$28,880	\$37,900
Connecticut College, CT	n/a	n/a	\$37,900
Vanderbilt University, TN	\$9,457	\$28,440	\$37,897
Johns Hopkins University, MD	\$9,142	\$28,730	\$37,872
Bowdoin College, ME	\$7,670	\$30,120	\$37,790
Dartmouth College, NH	\$8,625	\$29,145	\$37,770
Boston College, MA	\$10,207	\$27,522	\$37,729
Swarthmore College, PA	\$8,914	\$28,802	\$37,716
Stanford University, CA	\$9,073	\$28,563	\$37,636
Colby College, ME	n/a	n/a	\$37,570
Duke University, NC	\$8,210	\$29,345	\$37,555
Bates College, ME	n/a	n/a	\$37,500
Northwestern University, IL	\$8,967	\$28,524	\$37,491
Amherst College, MA	\$7,740	\$29,728	\$37,468
Vassar College, NY	\$7,665	\$29,540	\$37,205
Pomona College, CA	\$9,980	\$27,150	\$37,130
Colgate University, NY	\$7,155	\$29,940	\$37,095
Yale University, CT	\$8,600	\$28,400	\$37,000
Claremont McKenna College, CA	\$9,180	\$27,700	\$36,880
Emory University, GA	\$8,920	\$27,952	\$36,872
Carnegie Mellon University, PA	\$7,845	\$28,986	\$36,831
Columbia University, NY	\$8,546	\$28,206	\$36,752
Princeton University, NJ	\$8,109	\$28,540	\$36,649
Wellesley College, MA	\$8,612	\$27,904	\$36,516
College of the Holy Cross, MA	\$8,440	\$28,011	\$36,451
Williams College, MA	\$7,660	\$28,090	\$35,750
Lafayette College, PA	\$8,418	\$27,328	\$35,746
Lehigh University, PA	\$7,880	\$27,430	\$35,310
University of Notre Dame, IN	\$6,930	\$27,612	\$34,542
Carleton College, MN	\$5,868	\$28,527	\$34,395
<b>Wake Forest University, NC</b>	<b>\$7,600</b>	<b>\$26,490</b>	<b>\$34,090</b>
Davidson College, NC	\$7,371	\$25,903	\$33,274
Case Western Reserve, University, OH	\$7,260	\$24,742	\$32,002
California Institute of Technology, CA	\$7,560	\$24,117	\$31,677
Washington and Lee University, VA	\$5,710	\$23,295	\$29,005
Rice University, TX	\$7,880	\$18,253	\$26,133
Grove City College, PA	\$4,852	\$9,376	\$14,228

\*Source: US NEWS AND WORLD REPORT America's Best Colleges 2004.

\*\*Private specialty schools (art and engineering) are not included.

## Undergraduate Student Financial Aid Programs, 1998-2003

Type of Aid	1998-99	1999-00	2000-01	2001-02	2002-03
<b>Institutional Aid</b>					
Athletic	\$5,217,327	\$5,661,037	\$5,872,655	\$6,350,145	\$6,354,006
Non-Athletic*	\$13,736,427	\$16,439,221	\$17,296,821	\$19,197,630	\$21,033,958
<b>Total Institutional and Other*</b>	<b>\$18,953,754</b>	<b>\$22,100,258</b>	<b>\$23,169,476</b>	<b>\$25,547,775</b>	<b>\$27,387,964</b>
<b>Private Aid</b>					
Grants	\$2,436,623	\$2,486,653	\$2,930,391	\$3,240,879	\$3,517,633
Loans	\$996,048	\$1,399,198	\$2,034,051	\$2,296,674	\$2,356,203
<b>Total Private</b>	<b>\$3,432,671</b>	<b>\$3,885,851</b>	<b>\$4,964,442</b>	<b>\$5,537,553</b>	<b>\$5,873,836</b>
<b>Federal</b>					
PELL	\$479,471	\$522,479	\$575,373	\$701,335	\$796,011
SEOG	\$455,327	\$465,237	\$658,095	\$550,727	\$560,628
Perkins	\$1,458,991	\$1,487,737	\$2,232,442	\$2,983,762	\$3,385,491
Work Study	\$478,194	\$574,204	\$728,189	\$528,038	\$545,402
Stafford#	\$4,651,707	\$4,793,847	\$4,505,506	\$4,314,617	\$4,919,554
<b>Total Federal###</b>	<b>\$10,719,840</b>	<b>\$10,953,843</b>	<b>\$12,884,200</b>	<b>\$12,845,616</b>	<b>\$14,962,542</b>
<b>State</b>					
NCLTG	\$1,693,600	\$1,765,750	\$1,773,900	\$1,743,750	\$1,813,986
NC Scholarship	\$981,000	\$1,092,000	\$1,130,750	\$1,125,575	\$1,188,551
Incentive Grant**	\$3,000	\$17,250	\$18,750	\$8,400	\$7,700
<b>Total State###</b>	<b>\$2,692,850</b>	<b>\$2,889,680</b>	<b>\$2,938,325</b>	<b>\$2,893,825</b>	<b>\$3,022,197</b>
<b>Total Financial Aid</b>	<b>\$35,799,115</b>	<b>\$39,829,632</b>	<b>\$43,956,443</b>	<b>\$46,824,769</b>	<b>\$51,246,539</b>

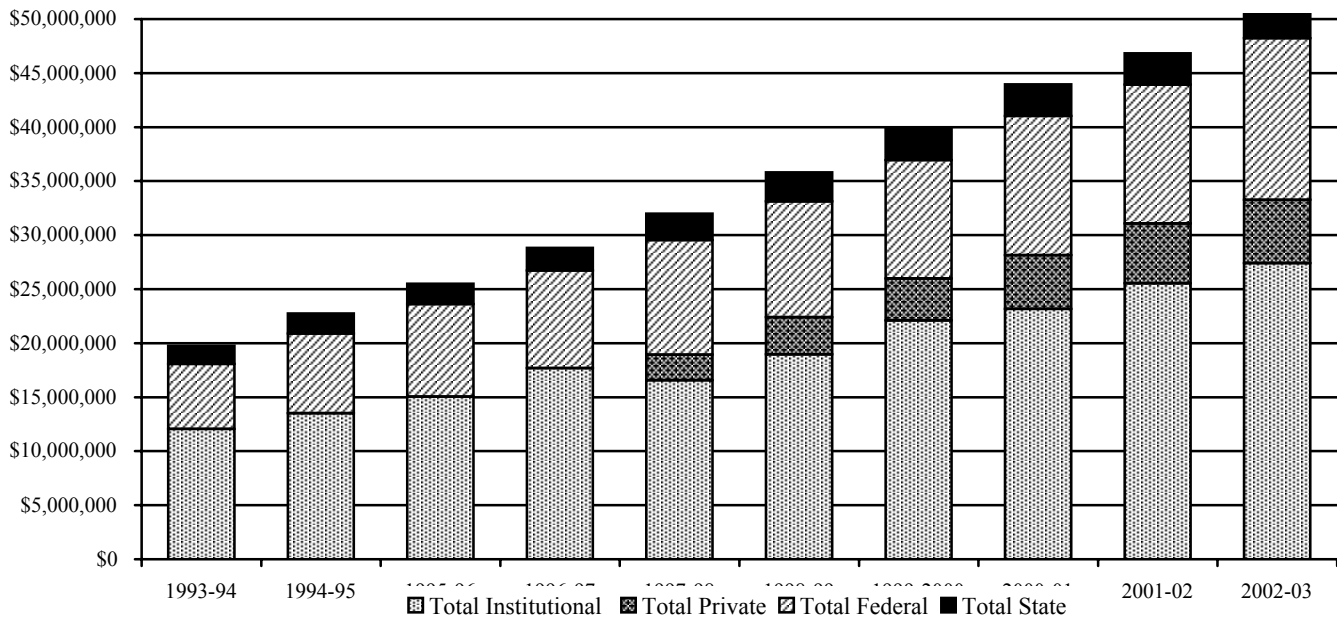
\* Includes tuition concessions

\*\* Federal and State share

# This total includes both subsidized and unsubsidized loans.

## This total includes Federal grants and loans not listed in the above categories. The amount not listed for 2002-03 is \$4,755,456

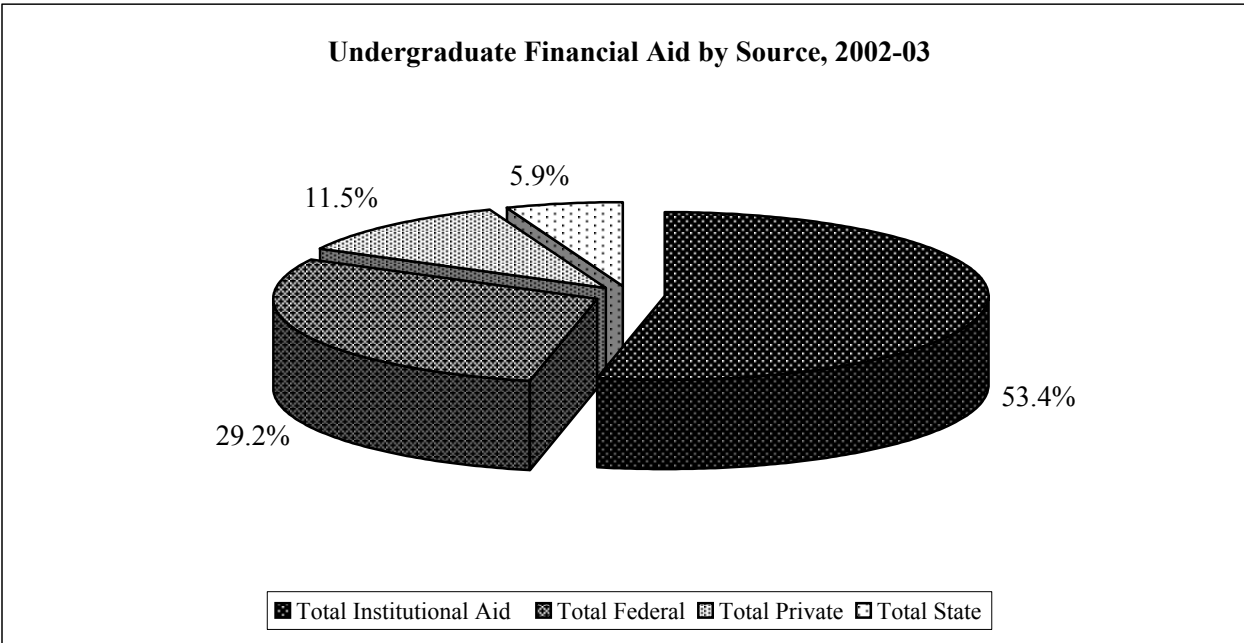
### This total includes State grants and loans not listed in the above categories. The amount not listed for 2002-03 is \$11,960



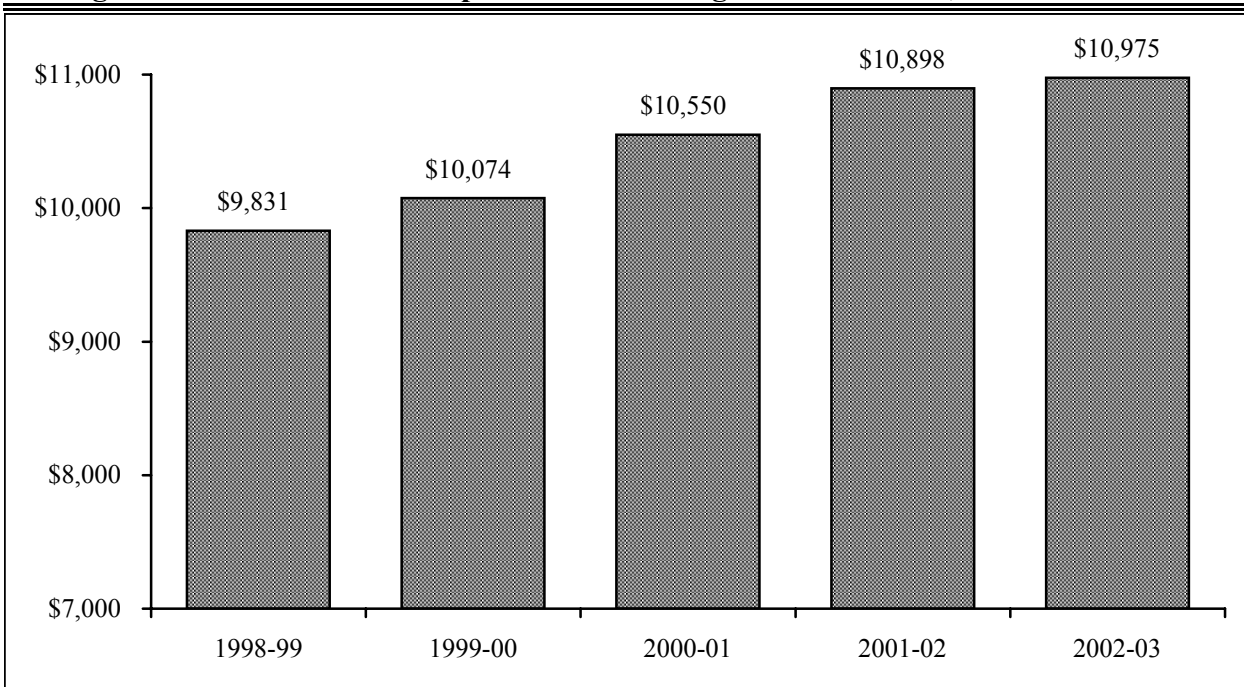
Note: Private aid is included as part of institutional aid from 1992-93 through 1996-97.

## Undergraduate Financial Aid by Source, 2002-2003

Type of Aid	Total Amount	% of Total
Total Institutional Aid	\$27,387,964	53.4%
Total Federal	\$14,962,542	29.2%
Total Private	\$5,873,836	11.5%
Total State	\$3,022,197	5.9%
<b>Total</b>	<b>\$51,246,539</b>	<b>100.0%</b>



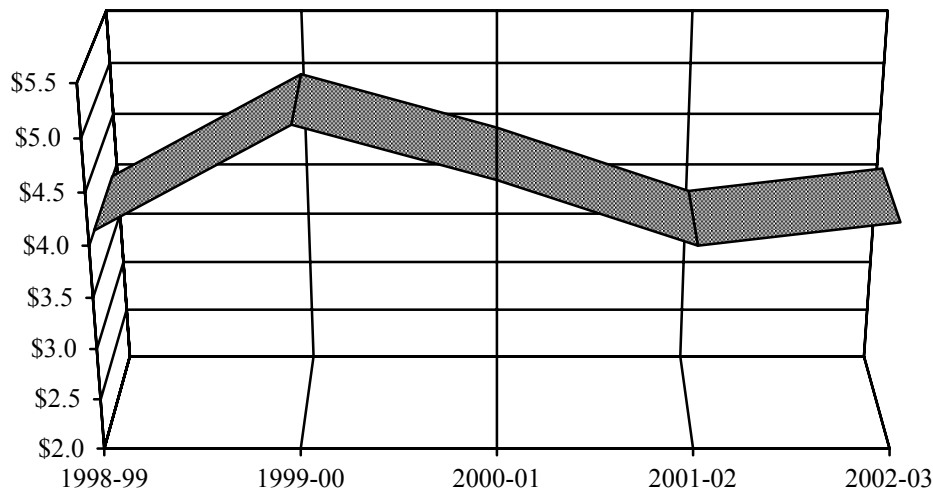
## Average Instructional Dollars Expended Per Undergraduate Student, 1998-2003



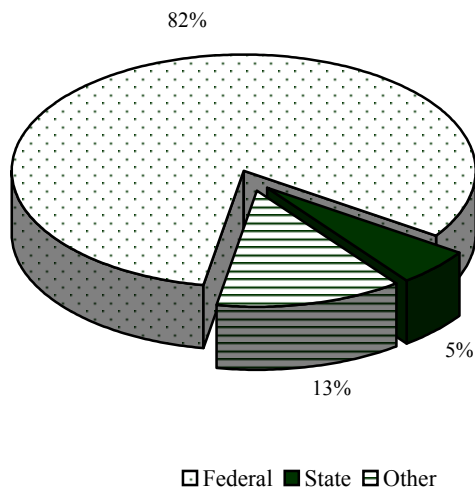
## Research Grants by Fund Source, Reynolda Campus, 1998-2003

Fund Source	1998-99	1999-00	2000-01	2001-02	2002-03
Federal	\$1,906,738	\$3,452,312	\$3,036,514	\$3,233,141	\$3,334,303
State	\$1,692,262	\$200,135	\$573,189	\$49,119	\$221,112
Other	\$408,158	\$1,350,903	\$877,070	\$579,351	\$530,418
<b>Total</b>	<b>\$4,007,158</b>	<b>\$5,003,350</b>	<b>\$4,486,773</b>	<b>\$3,861,611</b>	<b>\$4,085,833</b>

Total Research Grants Received (x \$1,000,000)



Research Grants 2002-03



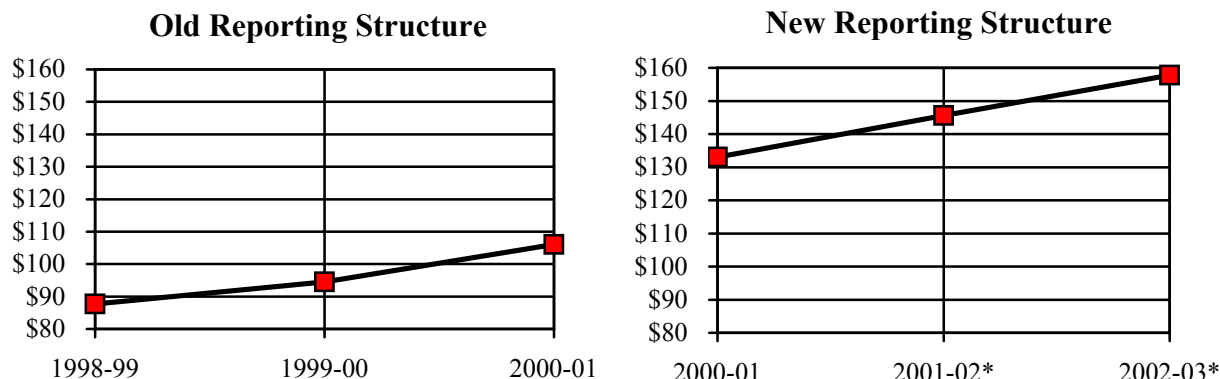
## Research Grants by Discipline

Anthropology (16)	\$113,620
Art (1)	\$18,638
Biology (12)	\$824,134
Chemistry (10)	\$990,842
Communication (2)	\$50,135
Computer Science (5)	\$245,360
Divinity School (1)	\$6,350
Education (1)	\$38,000
Health and Exercise Science (13)	\$1,168,213
Law School (1)	\$3,750
Mathematics (3)	\$176,722
Physics (2)	\$328,172
Psychology (2)	\$71,940
Sociology (1)	\$14,996
Student Health Services (1)	\$12,962
Z. Smith Reynolds Library (1)	\$22,000
<b>Total (72)</b>	<b>\$4,085,833</b>

## Research Grants by Fund Source, Bowman Gray Campus, 1998-2003

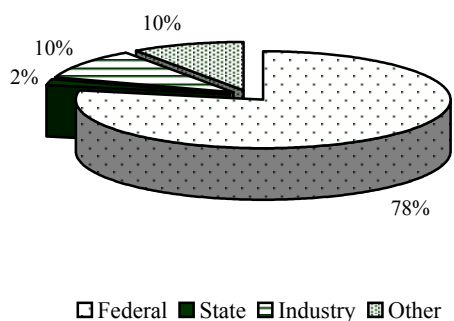
Fund Source	1998-99	1999-00	2000-01	2001-02*	2002-03*
Federal	\$57,391,798	\$64,522,822	\$73,437,005	\$114,840,282	\$122,966,458
State	\$7,340,668	\$7,031,956	\$7,357,337	\$3,194,199	\$3,239,256
Industry	\$13,475,967	\$16,215,674	\$13,573,733	\$15,781,030	\$16,051,813
Other	\$9,481,341	\$6,696,387	\$11,625,438	\$11,771,880	\$15,474,943
<b>Total</b>	<b>\$87,689,774</b>	<b>\$94,466,839</b>	<b>\$105,993,513</b>	<b>\$145,587,391</b>	<b>\$157,732,470</b>

Total Research Grants Received (x 1,000,000)\*



\*The Bowman Gray Campus changed the reporting structure of research grant data in 2001-02. The data now includes both direct and indirect costs. The total for 2000-01 would be \$132,787,300 if reported the same way.

Research Grants 2002-2003



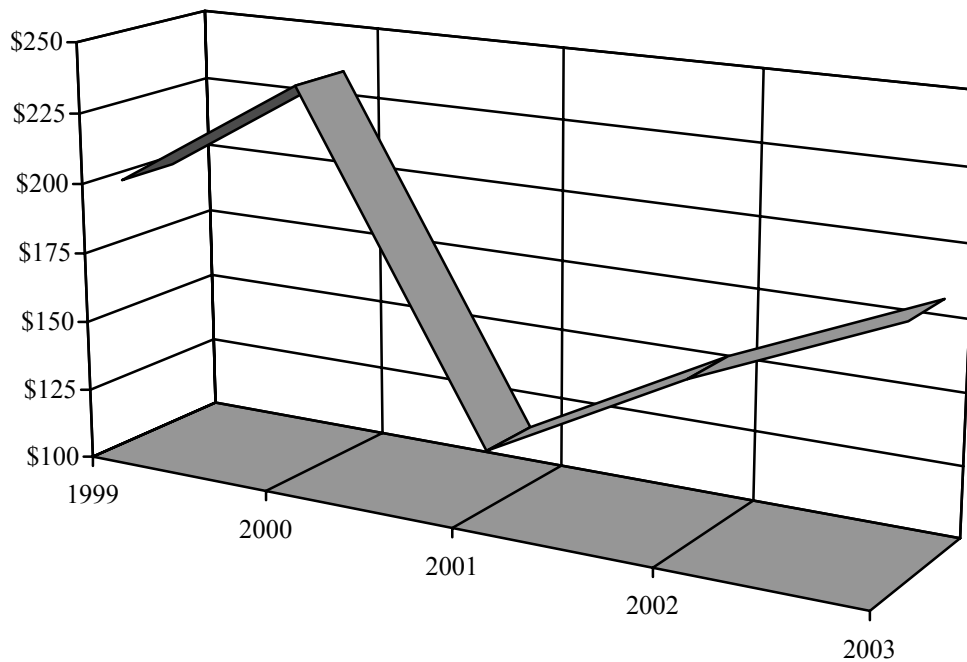
## Research Grants by Discipline

Anesthesiology (24)	\$1,910,684
Biochemistry (30)	\$6,745,058
Cancer Biology (26)	\$4,763,025
Dermatology (54)	\$1,889,968
Family Medicine (12)	\$1,338,506
Internal Medicine (Dept. Total - 246)	\$22,234,862
Microbiology/Immunology (22)	\$2,442,771
Neurobiology & Anatomy (38)	\$6,820,989
Neurology (38)	\$9,188,927
Obstetrics & Gynecology (19)	\$2,553,848
Pathology (Dept. Total - 41)	\$9,726,393
Pediatrics (62)	\$6,090,518
Physiology/Pharmacology (101)	\$19,064,120
Psychiatry (12)	\$6,575,703
Public Health Services (97)	\$37,935,197
Radiation Oncology (17)	\$2,455,817
Radiological Sciences (Div. Total - 14)	\$2,448,708
Surgical Sciences (Div. Total - 93)	\$7,881,156
Education Services (3)	\$436,181
AHEC (4)	\$811,136
Institutional (5)	\$4,418,905
<b>Total (899)</b>	<b>\$157,732,470</b>

## Sources of Revenue - Reynolda Campus, Fiscal Year 2003

Sources of Revenue	Amount
Net Student Tuition and Fees	\$90,745,000
Sales and Services of Auxiliary Enterprises	\$58,718,000
Private Gifts, Grants, and Contracts	\$20,913,000
Dividends, Interest, and Rents	\$8,769,000
Federal Grants and Contracts	\$4,160,000
Organized Activities Relating to Educational Department	\$3,046,000
Other	\$1,339,000
State Grants and Contracts	\$1,337,000
Interest on Short-term Investments and Other Income	\$490,000
Net Realized and Unrealized Appreciation on Investment	(\$2,111,000)
<b>Total</b>	<b>\$187,406,000</b>

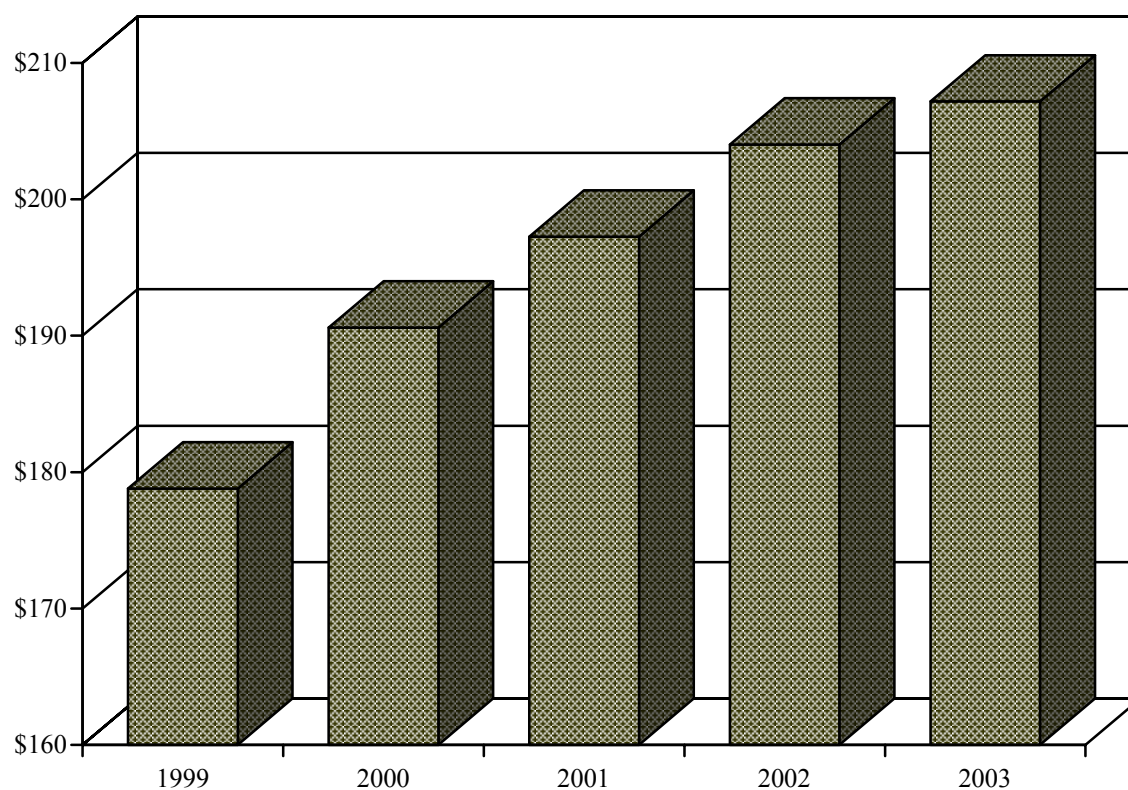
**Reynolda Campus Revenues (x \$1,000,000) 1999-2003**



## Expenditures - Reynolda Campus, Fiscal Year 2003

Expenditures and Transfers	Amount
Instruction, Departmental Research, and Clinical	\$92,227,000
Auxiliary Enterprises	\$52,520,000
Institutional Support	\$35,144,000
Libraries	\$10,189,000
Student Services	\$10,735,000
Academic Support	\$6,228,000
Organized Activities	\$1,794,000
Other	(\$1,667,000)
<b>Total</b>	<b>\$207,170,000</b>

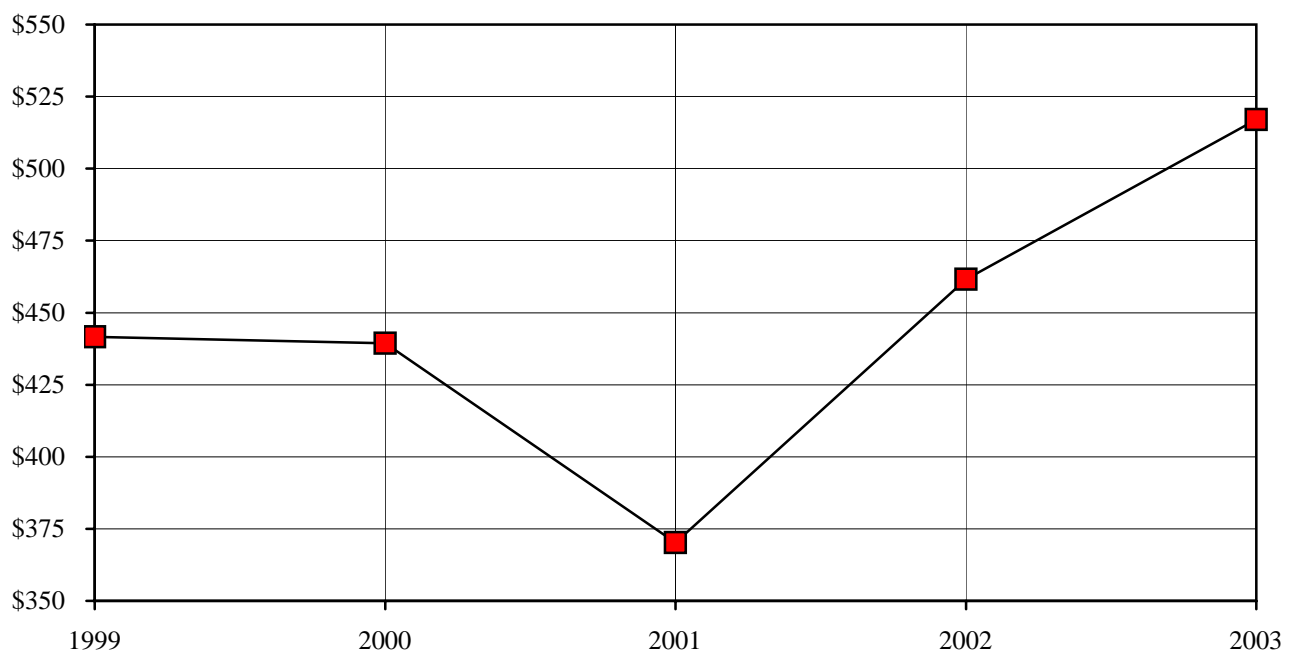
**Reynolda Campus Expenditures (x \$1,000,000) 1999-2003**



## Sources of Revenue - Bowman Gray Campus, Fiscal Year 2003

Sources of Revenue	Amount
Clinical Services	\$279,920,000
Federal Grants and Contracts	\$110,791,000
Private Gifts, Grants, and Contracts	\$43,258,000
Other	\$49,931,000
Net Student Tuition and Fees	\$12,013,000
Dividends, Interest, and Rents	\$7,456,000
State Grants and Contracts	\$9,870,000
Sales and Services of Auxiliary Enterprises	\$2,409,000
Interest on Short-term Investments and Other Income	\$3,653,000
Net Realized and Unrealized Appreciation on Investments	(\$2,750,000)
<b>Total</b>	<b>\$516,551,000</b>

**Bowman Gray Campus Revenues (x \$1,000,000) 1999-2003**

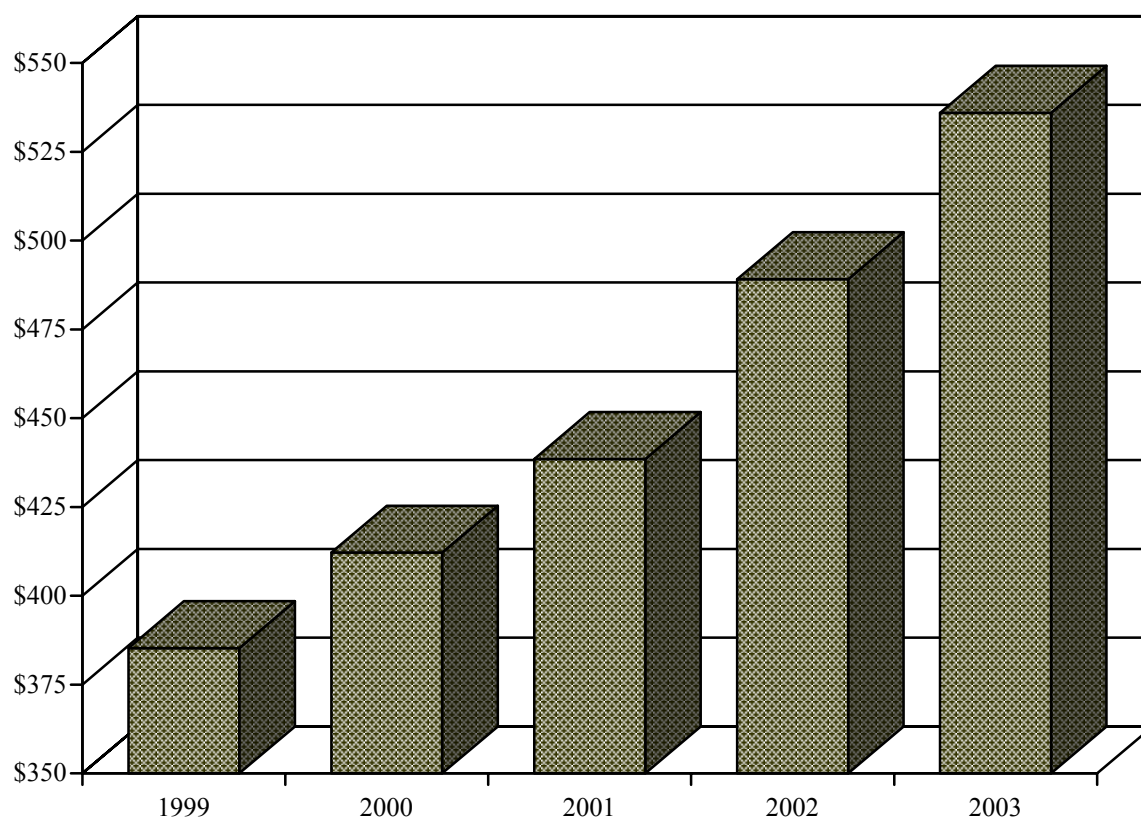




## Expenditures - Bowman Gray Campus, Fiscal Year 2003

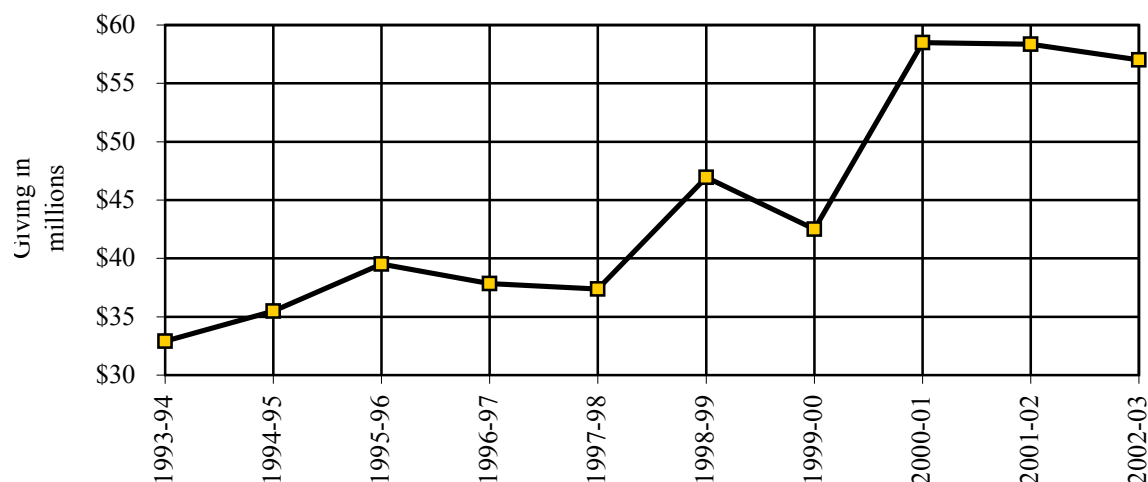
Expenditures and Transfers	Amount
Instruction, Departmental Research, and Clinical	\$350,555,000
Sponsored Research, Training, and Other Programs	\$128,673,000
Institutional Support	\$31,496,000
Academic Support	\$7,020,000
Libraries	\$4,272,000
Auxiliary Enterprises	\$2,368,000
Student Services	\$2,477,000
Other	\$9,121,000
<b>Total</b>	<b>\$535,982,000</b>

**Bowman Gray Campus Expenditures (x \$1,000,000) 1999-2003**

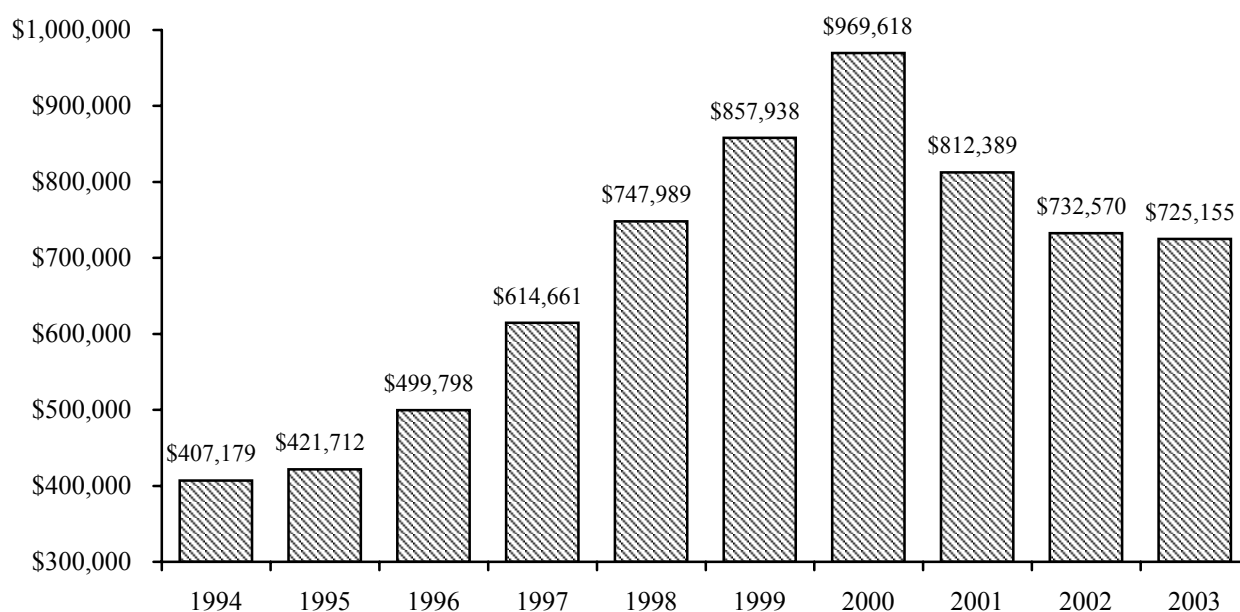


## Summary of Total Giving to Wake Forest University, 1993-2003

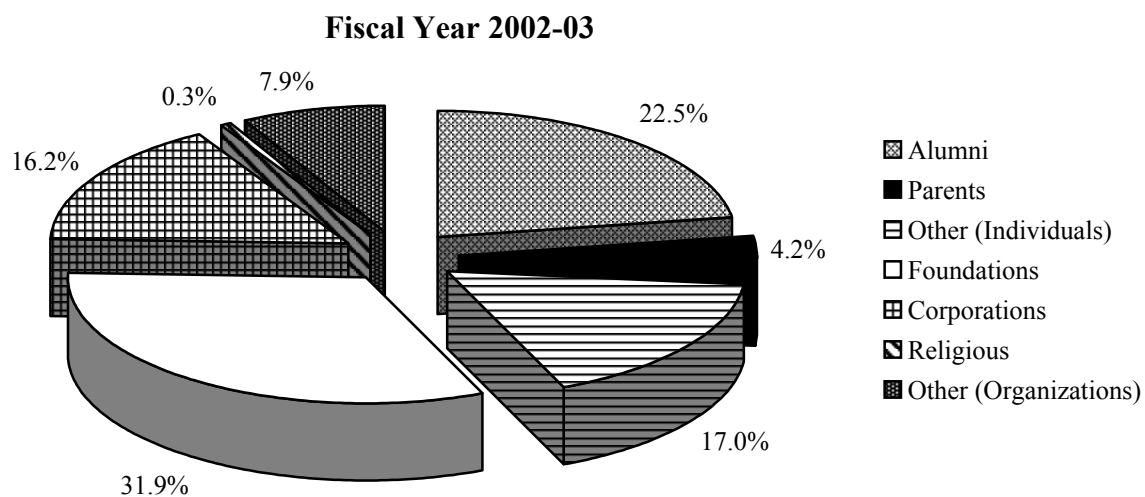
Year	Reynolda Campus	Bowman Gray Campus	Total
1993-94	\$20,227,053	\$12,618,235	\$32,895,288
1994-95	\$17,261,873	\$18,218,683	\$35,480,556
1995-96	\$25,259,279	\$14,248,508	\$39,507,787
1996-97	\$17,454,882	\$20,381,895	\$37,836,777
1997-98	\$22,201,636	\$15,180,763	\$37,382,399
1998-99	\$27,714,025	\$19,224,287	\$46,938,312
1999-00	\$25,868,336	\$16,633,467	\$42,501,803
2000-01	\$40,170,743	\$18,317,274	\$58,488,017
2001-02	\$35,032,045	\$23,705,634	\$58,737,679
2002-03	\$33,615,108	\$23,596,556	\$57,211,664



## Market Value of Endowment Funds (x \$1000)



## Charitable Contributions by Category



	Fiscal Year 2002-03	% Total
<b>Individuals</b>		
Alumni	\$12,888,873	22.5%
Parents	2,396,278	4.2%
Other	9,709,522	17.0%
<b>Organizations</b>		
Foundations	18,225,268	31.9%
Corporations	9,288,673	16.2%
Religious	193,117	0.3%
Other	4,509,933	7.9%
<b>Total</b>	<b>\$57,211,664</b>	<b>100%</b>

## Alumni Giving Percentage - 1998-2003

