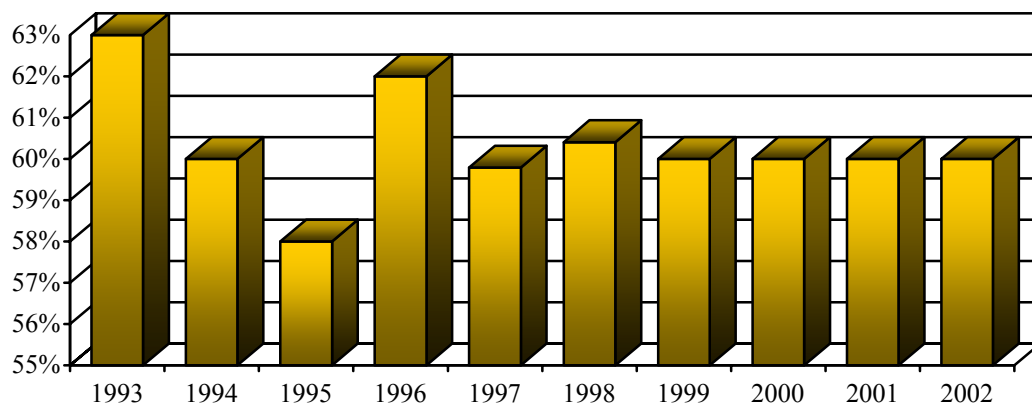


### Tenure of Full-time Instructional Faculty - Reynolda Campus, Fall 2002

Rank	Tenured		Tenure Track		Non-Tenure Track		Total		% Tenured	
	Male	Female	Male	Female	Male	Female	Male	Female	Male	Female
Professor	125	29	0	0	4	0	129	29	97%	100%
Associate	68	35	3	1	0	0	71	36	96%	97%
Assistant	0	0	50	41	15	12	65	53	0%	0%
Instructor	0	0	1	1	8	14	9	15	0%	0%
Lecturer	1	0	0	0	6	7	7	7	14%	0%
Other rank	0	0	0	0	2	7	2	7	0%	0%
<b>Total</b>	<b>194</b>	<b>64</b>	<b>54</b>	<b>43</b>	<b>35</b>	<b>40</b>	<b>283</b>	<b>147</b>	<b>69%</b>	<b>44%</b>

### Percentage of Full-time Instructional Faculty Tenured - Reynolda Campus, Fall 1993-2002



### Highest Degree Earned for Full-Time Instructional Faculty\*, Fall 2002

Degree	Male		Female		Total Faculty	
	#	%	#	%	#	%
Doctorate	206	91.2%	102	79.7%	308	87.0%
Masters	16	7.1%	23	18.0%	39	11.0%
Other	4	1.8%	3	2.3%	7	2.0%
<b>Total</b>	<b>226</b>		<b>128</b>		<b>354</b>	<b>100%</b>

\*Arts and Sciences and the Calloway School of Business and Accountancy

