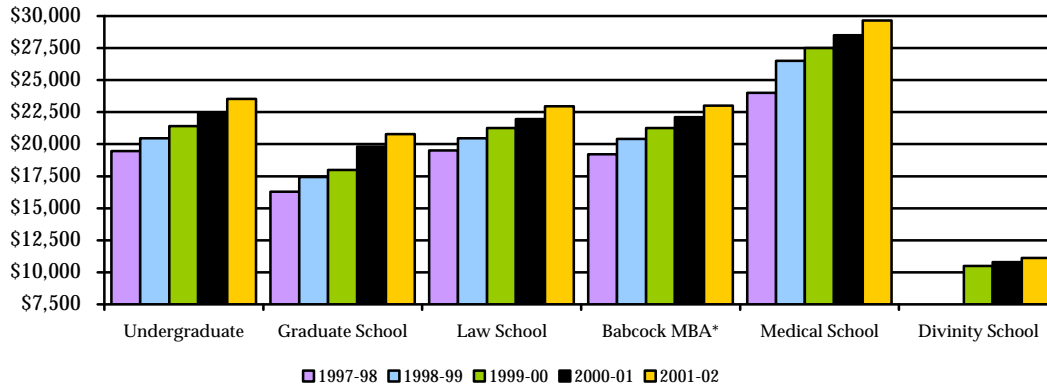


## First-year Student Tuition

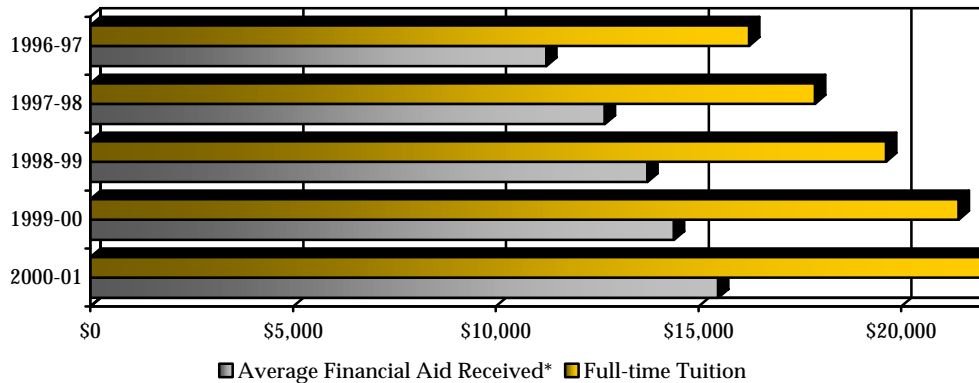
School	1997-98	1998-99	1999-00	2000-01	2001-02
Undergraduate	\$19,450	\$20,450	\$21,420	\$22,410	\$23,530
Graduate School	\$16,300	\$17,450	\$18,000	\$19,800	\$20,790
Law School	\$19,500	\$20,450	\$21,250	\$21,950	\$22,950
Babcock MBA*	\$19,200	\$20,400	\$21,250	\$22,100	\$23,000
Medical School	\$24,000	\$26,500	\$27,500	\$28,500	\$29,640
Divinity School			\$10,500	\$10,800	\$11,130

\* Resident first-year



## Undergraduate Tuition and Financial Aid

Year	Average Financial Aid Received*	Full-time Tuition	Percentage
1996-97	\$11,248	\$16,250**	69.2%
1997-98	\$12,691	\$17,875**	71.0%
1998-99	\$13,737	\$19,625**	70.0%
1999-00	\$14,393	\$21,420	67.2%
2000-01	\$15,484	\$22,410	69.1%



\* Average amount of aid received from all sources (excluding parent loans) through the Office of Financial Aid.

\*\* Weighted average of two tuitions (96-97: \$18,500 for freshmen and \$15,500 for upper classmen; 97-98: \$19,450 for freshmen/sophomores and \$16,300 for juniors/seniors; 98-99: \$20,450 for freshmen/sophomores/juniors and \$17,150 for seniors).