



PARENTS AND FAMILIES

Time Management, Tutoring, Accommodations, Oh My!



CLASS

Center for Learning, Access,
and Student Success

WAKE FOREST UNIVERSITY

Michael Shuman, PhD, Director
Kawana Neufville, MS, Assistant Director



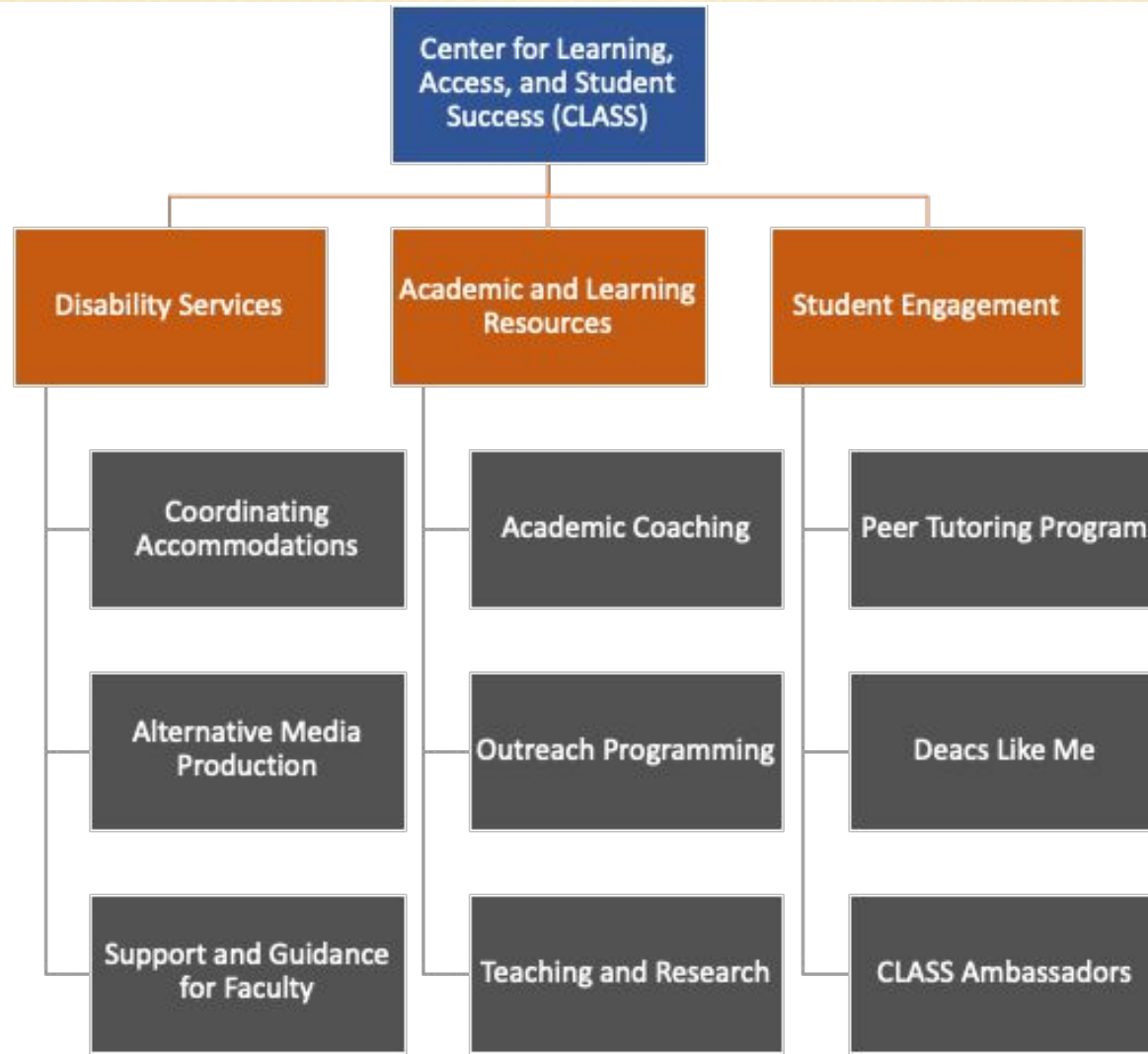
PARENTS AND FAMILIES

Our Mission

The mission of the Center for Learning, Access, and Student Success (CLASS) is to *provide opportunities for all students to achieve academic success*



PARENTS AND FAMILIES





PARENTS AND FAMILIES

CLASS by the numbers

In the 2022-2023
school year:

- **907** undergraduate students total (approximately 16%) received disability related accommodations.
- **2504** student meetings with CLASS staff for academic coaching or disability-related needs.
- **2558** total hours of peer-tutoring were provided to undergraduate students by CLASS tutors.
- **141** outreach events to students, faculty, staff, and other campus constituencies.



PARENTS AND FAMILIES

ACADEMIC COACHING

- One-on-one sessions for students
- Informed by research, best practice, and our own assessment
- Focused on enhancing academic skills including, but not limited to:
 - Performance anxiety
 - Test-taking and preparation
 - Time management
 - Study techniques and strategies



PARENTS AND FAMILIES

make it stick



The Science of Successful Learning

Peter C. Brown
Henry L. Roediger III
Mark A. McDaniel



PARENTS AND FAMILIES

"Sian Beilock offers a fascinating look into the science of why so many of us collapse under pressure. Whether you want to raise your test score or lower your golf score, Beilock provides a toolbox of techniques and strategies that can short-circuit anxiety and turn high-pressure situations to your advantage."

—DANIEL H. PINK, author of *DRIVE* and *A WHOLE NEW MIND*

Choke

WHAT THE SECRETS OF THE BRAIN

REVEAL ABOUT GETTING IT RIGHT

WHEN YOU HAVE TO

SIAN BEILOCK



PARENTS AND FAMILIES

Myth of Multitasking

Penny



PARENTS AND FAMILIES



A



B



C



D



E



F



G



H



I



J



K



L



M



N



O



PARENTS AND FAMILIES

TUTORING

- Most well known CLASS service!
- One-on-one and group tutoring available
- Our program and tutors have received certification through the College Reading & Learning Association (CRLA)
- Easy tutoring appointment scheduling! Appointments are scheduled online via online scheduling tool which can be accessed [on our website](#)
- No additional cost to students – up to 3 hours per week, per course
- Available for almost every academic subject, except math and writing, because WFU has a [Writing Center](#) and a [Math and Statistics Center](#)



PARENTS AND FAMILIES

PSYCHOLOGY 100: Learning to Learn

- One section is taught in the fall, spring, and Summer Session II
- Three credit course P/F
- Individual coaching with CLASS staff members
- Visit to ZSR and OPCD, with other guest lectures



PARENTS AND FAMILIES

ACCOMMODATIONS FOR STUDENTS WITH DISABILITIES

Resources regarding the process available on the class.wfu.edu website

The process includes:

1. **Disclose:** Notify CLASS about the need for accommodations and provide appropriate documentation. This may be done via the [student portal](#) on our website
2. **Verify:** CLASS staff will review documentation and accommodations request
3. **Implement:** CLASS staff will begin interactive process with the student to help facilitate implementation of reasonable accommodations



PARENTS AND FAMILIES

The CLASS Ambassadors

Peer Education. Engagement. Mentoring.

The CLASS Ambassadors are student representatives that help to increase awareness about the CLASS office, highlight the issues that impact the students we serve, and foster opportunities to engage, help, and share with other students and the campus community.





PARENTS AND FAMILIES

Deacs Like Me



Deacs Like Me is a student organization that aims to provide mentoring and inspiration for middle school students in the community who would benefit from knowing there are “Deacs like me” who also learn differently.



PARENTS AND FAMILIES

Delta Alpha Pi (DAPi)



Delta Alpha Pi (DAPi) is an academic honor society founded to recognize high-achieving students with disabilities. This dynamic organization celebrates and supports academic achievement, leadership and advocacy for post-secondary students with disabilities.

Eligibility:

- be a current WFU undergraduate student who has a documented disability or who self-identifies as an individual with a disability
- have completed a minimum of 24 credits
- have a cumulative grade point average of at least 3.10
- show an active interest in disability issues and advocacy



PARENTS AND FAMILIES



TIME MANAGEMENT: HOW TO PLAN YOUR TIME WISELY

SEPTEMBER 27, 2023

6:00 PM

JOHNSON RESIDENCE HALL





PARENTS AND FAMILIES

We work very closely with academic and administrative departments across campus, and we value our strong relationships with the following partners:



PARENTS AND FAMILIES

Academic Departments
Facilities & Campus Services
University Counseling Center
Aramark
Chaplain's Office
Residence Life & Housing
Law School
Financial and Accounting Services
Intercultural Center
Office of Personal and Career Development
ZSR Library

Reynolda House
Global Programs and Studies
Information Systems
Medical School
Registrar's Office
Office of Academic Advising
Student Health Service
Divinity School
Advancement
Provost's Office
And the list goes on...



PARENTS AND FAMILIES

"But the key that really changed my life was the greater resiliency and ability to keep on making progress even during tough times that I learned from you"



PARENTS AND FAMILIES

Thank You!!

If you have additional questions please reach out to the CLASS at class@wfu.edu or 336-758-5929

Stop by our open house this afternoon!
Reynolda Hall
Suite 118

